

# VOLVO S60





## CONTENTS

VOLVO S60	1
PERFORMANCE	4
DRIVER'S ENVIRONMENT	6
COMFORT AND VERSATILITY	8
INFOTAINMENT	10
VOLVO S60 R	12
SAFETY	16
ENVIRONMENTAL CARE	24
FACTORY-INSTALLED OPTIONS	28
ACCESSORIES	29
INTERIOR DESIGN	30
EXTERIOR DESIGN/ ALUMINIUM WHEELS	33
STANDARD FEATURES	36
PACKAGES	37
SPECIFICATIONS	38
MEET THE FAMILY	39
CARE BY VOLVO	40
EXTERIOR COLOURS	41

[WWW.VOLVOCANADA.COM](http://WWW.VOLVOCANADA.COM)



# Why wait a second longer?

THE VOLVO FOR PEOPLE WHO ARE PASSIONATE ABOUT DRIVING IS BEFORE YOU. CAST YOUR EYE OVER THE STREAMLINE FORM, SEE HOW ITS LINES PLAY WITH THE LIGHT. THIS IS BECAUSE IT'S REALLY A SPORTS CAR WITH A SEDAN INSIDE. SO WHATEVER YOUR MISSION IN LIFE ENTAILS, THERE'S NO NEED TO SACRIFICE STYLE AND PERFORMANCE. THE VOLVO S60 INVITES YOU TO GET BEHIND THE WHEEL AND MAKE A STORY OF YOUR OWN.





The Volvo S60. Now with improved chassis and steering, and enhanced design throughout.



# The driving force is ripe.



#### **Volvo S60 2.5T AWD (208 hp)**

#### **Volvo S60 2.5T (208 hp)**

Employing a light-pressure turbo-charger this engine provides a lively response at any speed. It delivers 236 lb.-ft. of torque from just 1500 rpm.

#### **All-Wheel Drive with Instant Traction™**

Providing instant take-off and superior grip, the electronically controlled all-wheel drive system employs Instant Traction technology. Constant hydraulic pressure ensuring that power is instantly distributed among the wheels with the best grip. Wheel spin is minimized while acceleration and stability are enhanced, not least in slippery conditions. When cruising on straight dry roads, the front wheels receive up to 95% of the power for efficiency. As conditions change, up to 50% of the power can be directed to the rear wheels. And when cornering, the system channels power back and forth to provide sharp turning and greater stability throughout the curve.

#### **Volvo S60 T5 (257 hp)**

The leader of pack, this 2.4-litre engine has plenty of punch throughout the range of rpm. Full torque (258 lb.-ft.) is available at just 2100 rpm, taking the car from 0 to 100 km/h in 6.5 seconds (manual).

#### **Transmissions**

The Geartronic is a pleasure in any situation. Leave it in automatic mode for carefree driving, or nudge it into manual mode to shift gears yourself. Additionally, the special winter setting makes it easier to move off and maintain grip on slippery surfaces. Or, if you prefer a more hands-on approach, there's the smooth and distinct, all-synchromesh manual (available with T5, R).

THE T5 ENGINE IS ONE OF THREE ALTERNATIVES. IT PROPELS THE VOLVO S60 TO 100 KM/H IN JUST 6.5 SECONDS. FASTER STILL IS THE R MODEL. SO YOU'RE ALWAYS EMPOWERED TO DEAL WITH A TRICKY SITUATION. WHICHEVER ENGINE YOU CHOOSE, DRIVETRAIN AND CHASSIS PERFORM AS ONE. ACCELERATION IS NEVER DELAYED. LIVELINESS IS ASSURED BY IMMEDIATE RESPONSE THROUGHOUT THE ENTIRE RANGE OF RPM. MODEST FUEL CONSUMPTION IS THE PRODUCT OF LOW INTERNAL FRICTION, LIGHTWEIGHT MATERIALS AND ADVANCED ENGINE MANAGEMENT. AND OF COURSE, ENVIRONMENTAL DEMANDS ARE MET—OFTEN WITH ROOM TO SPARE.

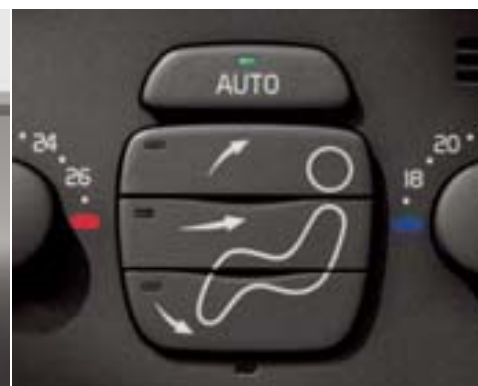


A new picture  
takes shape.





WHEN YOU GET INTO THE DRIVER'S SEAT, THE VOLVO S60 PUTS THE ROAD AHEAD INTO ITS PROPER PERSPECTIVE. THE HIGHLY ADJUSTABLE SEAT AND STEERING COLUMN HELP CREATE THE PERFECT ERGONOMICS. INSTRUMENTATION IS CLEARLY PRESENTED, CONTROLS ARE INTUITIVE AND WITHIN EASY REACH. IF IT STARTS RAINING, SENSORS WILL TAKE CARE OF THE WIPERS AND WHEN IT GETS DARK, THE AUTO-DIM REAR VIEW MIRROR AUTOMATICALLY ADJUSTS.



#### **Mission control**

The neat array of buttons and controls, all within easy reach, give you full access to settings for the cabin climate and the audio system. The ease of steering wheel-mounted buttons keep you in charge so that you can concentrate on what you enjoy most—driving

#### **On track**

Relax and let the integrated navigation system keep you on course. Wherever you're heading, the optional Volvo Navigation System (VNS) will save time and fuel—doing the environment a favour. Voice guidance leads you to your destination while letting you keep your eyes on the road.

#### **Air control**

The climate system maintains the temperature and quality of cabin air, keeping the driver alert and the passengers comfortable. Electronic Climate Control (ECC) maintains chosen temperatures for either side of the cabin. The Interior Air Quality System (IAQS) monitors and filters incoming air, and when necessary, it will temporarily close the external air vents.



Although the Volvo S60 is a true driver's car, all passengers will appreciate amenities like the sculpted seats and generous legroom, cup holders within easy reach, and a conveniently located jacket hanger. Additional comforts include separate adjustable air vents for the rear seats. Opt for a power driver's seat with a memory function and up to three drivers can move the seat to the "right" position at the touch of a button.



If you like what you see,  
wait until you hear this.







R is a concept based on superlative performance. Its three main elements are ride, power and comfort. What's special is the way it puts them at your disposal. With a high degree of refinement, the engine boasts 295 lb.-ft. of torque and the suspension system allows you to choose your preferred style of handling. Because ultimately, a Volvo R model is all about the drive.



# The Volvo S60 R in black and white.

## POWER

Max power output: 300 hp at 5500 rpm

Max torque: 295 lb.-ft. at 1950-5250 rpm

Acceleration 0-100 km/h, man/auto: 5.7/6.7 sec

Top speed: 250 km/h (electronically governed)

Fuel consumption, man/auto: 11.1/11.1 litres/100 km

Carbon dioxide emissions CO<sub>2</sub> g/km, man/auto: 252/259

Environmental classification: LEV2

## Engine detail

Five-cylinder, 2.5-litre, turbocharged engine with Continuously Variable intake and exhaust Valve Timing (dual CVVT). Double overhead camshafts, 20 valves. Dual-charge air coolers (Intercoolers). Three-way catalytic converter with a heated oxygen sensor. Dual fuel pumps, a two-section fuel tank and a racing type oil pan. Furthermore, the engine is designed to handle the G-forces that build up with extreme acceleration.

## DRIVELINE

Pre-charged electronically controlled, All-Wheel Drive system (AWD) with Instant Traction™. This technology employs constant hydraulic pressure to channel power to the wheels with the best road grip, so wheel spin is minimized, acceleration is immediate and the car is exceptionally reassuring in slippery conditions. Six-speed manual close-ratio transmission (sport shifter gear lever, aluminium with leather-clad gear knob). Also available with a six-speed Geartronic automatic allowing manual shifting (leather-clad gear knob).

## CHASSIS

Four-C (Continuously Controlled Chassis Concept) semi-active chassis. Front suspension with spring struts. Multi-link independent rear suspension with aluminium subframe. Dynamic Stability and Traction Control (DSTC) anti-skid system that can be partially or fully disengaged.







#### Four-C detail

The Four-C system analyses the car's body movement, speed, wheel movement, steering wheel position and other parameters 500 times per second. Simultaneously, it adjusts each shock absorber for optimal handling and comfort. At the heart of the system is Volvo's semi-active suspension with continuously controlled Monroe-Öhlins shock absorbers and three dynamic chassis modes to choose from: Comfort—for flexible damping, Sport—for precise movement and ride comfort, and Advanced—for uncompromised road holding and surface feedback. The shock absorbers, AWD system, DSTC system, engine, brakes and steering all synthesize into one electronically controlled system.

#### BRAKES

Power-assisted ABS brakes, ventilated 330/32 mm discs front and ventilated 330/28 mm discs rear. Brembo four-piston aluminium calipers. Featuring Emergency Brake Assistance (EBA) and Electronic Brake Distribution (EBD) between front and rear brakes. Stopping distance at 100 km/h: 36 metres.

#### STEERING

ZF Servotronic speed-dependent power-assisted rack and pinion steering. Tilt and telescopic steering wheel column. 2.5 turns lock to lock. Turning circle 13 metres. Communicative yet firm, the steering system provides progressively less power assistance the faster you drive, bringing high steering precision and balanced road feedback.

#### DESIGN

R-specific design elements are mostly performance related. Cases in point are the enlarged air duct, the deeper front spoiler, the rear spoiler and the aluminium wheels that help cool the brakes. Similarly, inside the car, the top of the dash is black leather to reduce reflections inside the cabin and, like the steering wheel, its stitching is in blue for contrast. Instrumentation is highlighted with aluminium, as are the invigorating lines of the cabin. R-design seating boasts deep sculpted and supportive sides. Choose between Nordkap soft leather in dark blue metallic, Gobi soft leather in light beige metallic, or Atacama natural hide upholstery.

#### Wheels

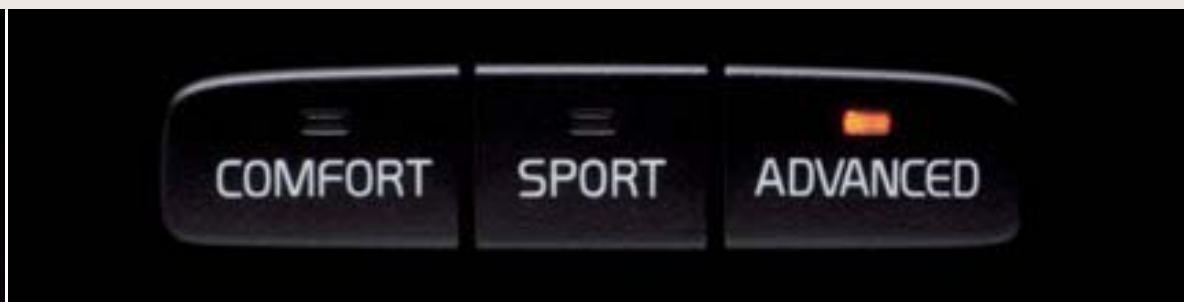
Pegasus 8x18" 5-spoke aluminium wheels, Pirelli P-Zero Rosso 235/40-18" tires.

#### Headlights

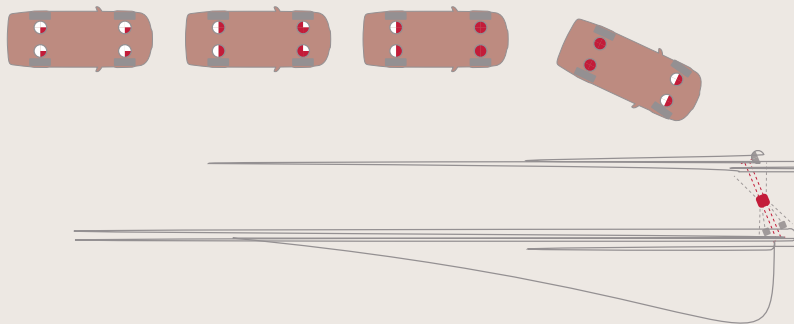
Bi-Xenon headlights, matte silver bezels. Projector-type front fog lights.

#### Drag coefficient

Cd 0.29



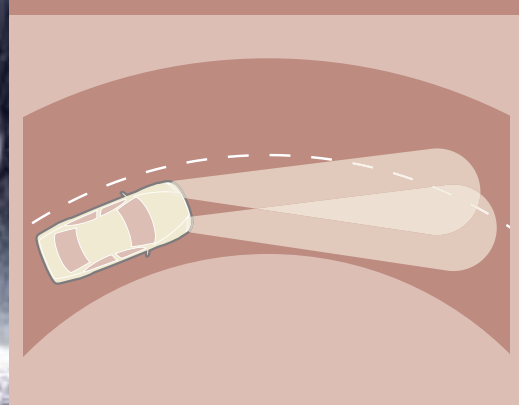
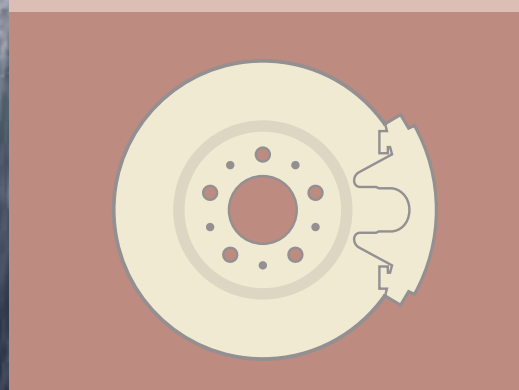
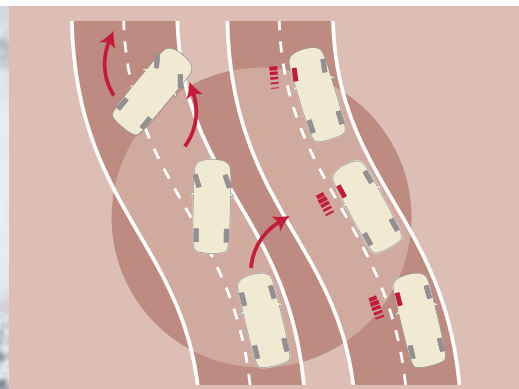
# F i t



## C (Four-C) o n t

The Four-C active chassis provides a choice of two modes—Comfort and Sport. Whichever you choose, the system monitors the car, road and driver 500 times per second, simultaneously adjusting each shock absorber to maintain optimal handling. At the heart of the system is Volvo's semi-active suspension with continuously controlled Monroe-Öhlins shock absorbers. Furthermore, Four-C interacts with the DSTC system, engine, brakes and steering to

WHETHER YOU'RE PULLING AWAY ON ICE OR TURNING ON A SLIPPERY PATCH OF COBBLES, THE REFINED CHASSIS GIVES THE VOLVO S60 A FIRM STANCE AND AN EXCEPTIONAL HOLD. MULTI-LINK REAR SUSPENSION COUNTERACTS ANY TENDENCY TO UNDER-STEER, WHILE MCPHERSON FRONT SUSPENSION STRUTS PROMOTE QUICK AND CRISP RESPONSE TO SUDDEN TURNING AND BRAKING. OVER AND ABOVE THIS, DYNAMIC STABILITY AND TRACTION CONTROL ENSURES THAT EACH WHEEL IS USED TO ITS GREATEST ADVANTAGE ON ALL SURFACES.



**Dynamic Stability and Traction Control (DSTC)  
(Standard 2.5T AWD, T5, R)**

Should a wheel begin to lose traction, DSTC automatically cuts its power until grip is regained. If necessary, it will also step in to help counteract a potential skid by applying brake to one or more wheels as needed. The DSTC spin control function can even be disengaged, providing better traction in certain conditions.

**ABS brakes with Emergency Brake Assistance (EBA)**

The anti-locking brakes are designed for optimal performance even during repetitive and intensive use. You can brake as hard as you like while you steer clear of trouble. EBA detects attempted emergency braking and, when necessary, provides added assistance to bring the car to standstill in the shortest possible distance.

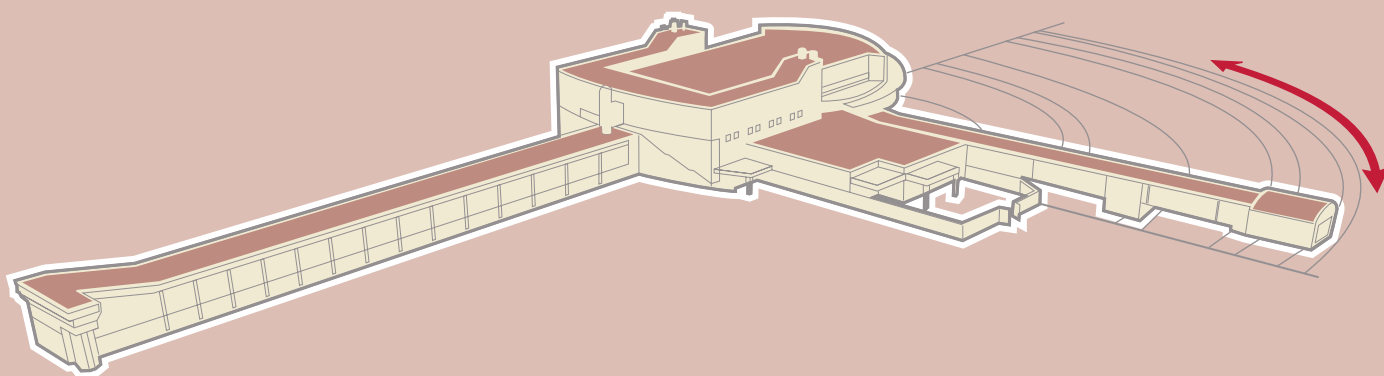
**Active Bi-Xenon Lights (ABL)  
(Package 2.5T AWD)**

Bi-Xenon technology provides twice the illumination of a conventional halogen headlight. Active Bi-Xenon Lights help you to see around bends at night. Controlled by microprocessors, the motorized lights turn up to 15° in either direction—faithfully lighting up your chosen path. A twilight sensor disengages the system during daylight to extend its lifespan, and a high-pressure washer cleans the lenses—half at a time for continuous performance.

Our safety centre—one place  
it's not safe to drive a Volvo.

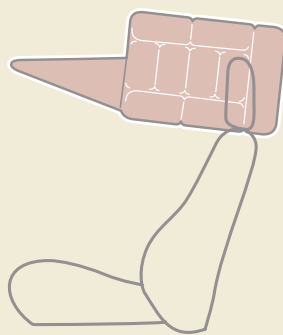


POSSIBLY THE MOST ADVANCED FACILITY OF ITS KIND, THE VOLVO CARS SAFETY CENTRE IS WHERE WE CRASH TEST EVERY MODEL WE MAKE. BEYOND COUNTLESS COMPUTER SIMULATIONS, WE CONDUCT OVER 400 FULL-SCALE COLLISIONS EACH YEAR. THESE TESTS ARE BASED ON WHAT OUR RESEARCHERS DISCOVER ON THE ROAD—WE'VE INVESTIGATED OVER 35,000 REAL ACCIDENTS SINCE 1970. IN FACT, EVERYTHING WE DO TO MAKE CARS SAFER BEGINS WITH A REAL-LIFE TRAFFIC SITUATION.



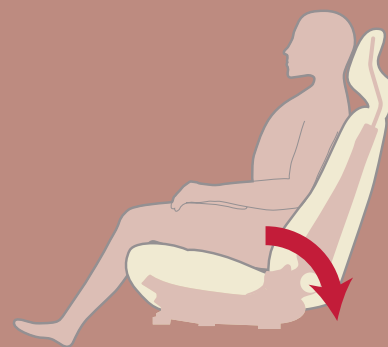
#### **Side Impact Protection System (SIPS)**

SIPS is a Volvo unique safety system that has been developed to improve protection at the sides of the car where occupants are more directly exposed to crash forces from other vehicles. The steel framework of the car is designed and reinforced to help distribute crash forces over a wide area of the car body to reduce intrusion of the passenger compartment. Additionally, in the event of a collision, seat-mounted side airbags are activated to cushion the chest and hip area of outboard occupants.



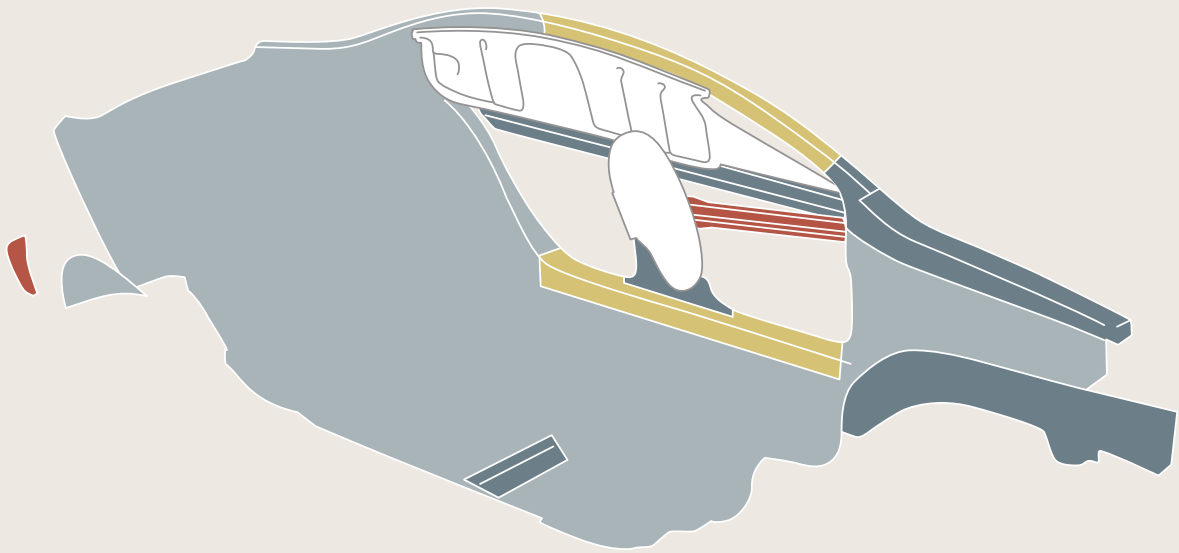
#### **Inflatable Curtain (IC)**

Interacting with the SIPS airbags, IC inflates in a side impact to help protect the heads of outboard passengers. By staying inflated beyond initial impact, it helps to keep occupants' heads inside the vehicle in a prolonged collision situation. Both IC and SIPS airbags are inflated in less than three hundredths of a second.



#### **Whiplash Protection System (WHIPS)**

Helping to reduce the risk of long term whiplash injuries in rear impact collisions, WHIPS is another product of the Volvo Cars Safety Centre and its real-life approach. A wire framework in the front seats helps prevent the occupant from being pressed back. The seat moves back to absorb energy, and upward and forward to embrace the back and neck. Finally it tips back to reduce any jolting of the head.





# Security takes over.



### Alarm

Connected to the doors, hood and tailgate, the alarm also reacts if a window is broken. And should you encounter an emergency situation on your way to or from the vehicle, the alarm can be activated from your hand-held remote control.

### Remote-controlled central locking

A touch of a button and you lock or unlock the doors and tailgate. You can also unlock the tailgate separately. All doors can be automatically locked the moment you drive away. Alternatively, lock them immediately using the button on the driver's door.

### Approach and Home Safe Lighting

Activated with the remote control, Approach Lighting provides a warm reception on a dark night. This consists of interior and exterior lights, if you choose it. Home lighting is activated with the headlight lever as you leave the car, and provides a similar courtesy including low beam headlights to accompany you to your door.



STURDY DOOR LOCKS AND AN ELECTRONIC IMMOBILIZER MAKE STEALING THIS CAR DIFFICULT. THE REMOTE-CONTROLLED ALARM LIKEWISE. CONNECTED TO THE DOORS, HOOD AND TRUNK, THIS ALSO REACTS TO MOVEMENT INSIDE THE CAR OR THE BREAKING OF A WINDOW. ADD A LEVEL SENSOR AND THE ALARM WILL BE TRIGGERED IF THE CAR IS JACKED UP. THE VOLVO S60'S APPROACH AND HOME LIGHTING PROVIDE A SENSE OF SECURITY WHEN COMING AND GOING AT NIGHT. BUT IF AN EMERGENCY SHOULD OCCUR, THE PANIC BUTTON ON THE REMOTE CONTROL LETS YOU SOUND THE ALARM.



Environmental care.  
Part of our commitment to  
safety and your wellbeing.



To choose a Volvo model on the basis of its overall environmental performance, see our Environmental Product Information (EPI) guide at [www.volvocars.com/EPI](http://www.volvocars.com/EPI)



AT VOLVO, THE WELLBEING OF PEOPLE IS AT THE CORE OF EVERY DECISION WE MAKE. AND JUST LIKE SAFETY, WE BELIEVE THAT ENVIRONMENTAL CARE REQUIRES A HOLISTIC APPROACH FROM THE VERY START. THIS IS WHY VOLVOS ARE BUILT IN SOME OF THE CLEANEST AUTOMOTIVE PLANTS IN THE WORLD. HOPEFULLY, THIS APPROACH ALSO EXPLAINS WHY WE PAY SO MUCH ATTENTION TO YOUR IMMEDIATE ENVIRONMENT-INSIDE THE CAR.

#### **Air quality control**

A cabin filter prevents dust and pollen from entering the car through its ventilation system. For even cleaner air, there's the option of the Interior Air Quality System (IAQS). This continuously monitors incoming air for certain unhealthy gases such as carbon monoxide, ground-level ozone and nitrogen dioxide. If necessary, IAQS will temporarily close the external air vents. It also features an active carbon filter that removes various unpleasant odors and fumes from incoming air.

#### **Testing of materials for harmful substances**

Making life more comfortable for people with allergies or asthma, upholsteries and interior textiles comply with the Oeko-Tex Standard 100—an international benchmark ensuring that textiles and leathers are tested for certain allergy inducing or harmful substances. Several interior metal details are tested with regard to contact allergies, and comply with the same standards for nickel leakage as high quality jewelry.

#### **Fuel efficiency**

To increase fuel efficiency and reduce carbon dioxide emissions, all Volvo engines have advanced electronic management systems and low internal friction. Other contributors to fuel economy include efficient transmission systems, aerodynamic body design, and a trip computer displaying current and average fuel consumption.

#### **Emission control**

Volvo engines meet stringent international emission requirements. Advanced emission control technology eliminates between 95 and 99% of the carbon monoxide, hydrocarbons and nitrogen oxides in exhaust fumes. The emission control system is designed to provide full effect as rapidly as possible after a cold start, when emissions are at their highest. Right down to the fuel filler door, the fuel system is designed to reduce emissions through evaporation when driving or stationary.

#### **Clean brochure**

At Volvo, concern for the environment is important in every aspect of what we do. This brochure is 100% recyclable. The inks and coatings utilized for print are vegetable and water-based. Even the shipping cartons contain 50% post-consumer waste and are also 100% recyclable.





# Factory-installed options.

THE SENSE OF QUALITY AND CARE—AND KNOWING THAT YOU GET THE VOLVO THAT SUITS YOUR LIFESTYLE. CUSTOMIZE YOUR VEHICLE WITH THE OPTIONS THAT BEST MEET YOUR DEMANDS AND DESIRES, AND YOU'LL SOON BE BEHIND THE WHEEL OF YOUR INDIVIDUALLY TAILORED VOLVO S60.



1

#### **Park Assist, rear**

Makes it safer to back up, for instance when backing into a space between two cars. A pulsating tone inside the cabin rises to a steady signal when the object is approximately 1 foot behind your rear bumper.

2

#### **Power glass sunroof**

Makes the interior feel extra light and airy. Touch a button—and you open or close the sunroof. And if the sun is too strong, you can always close the built-in sun shade.

3

#### **Active Bi-Xenon headlights (Package 2.5T AWD, T5)**

Gives you even more effective low and high beams. The headlights are also motorized to move laterally and follow the movements of the steering wheel to light up curves as you drive.

4

#### **Volvo Navigation System (VNS) (Optional)**

The Volvo Navigation System can guide you anywhere with precise audio and visual directions. A liquid crystal 6.5-inch display shows your location on a map and plots the best route. Controls are conveniently located on the steering wheel. All map-based information is stored on DVD.

5

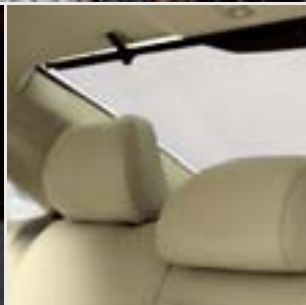
#### **Four-C (Package T5)**

The Four-C system is based on sensors that monitor the car's body movement, speed, wheel movement, steering wheel position and other parameters 500 times per second. Comfort mode offers a softer ride for everyday driving, or simply press the button to switch to Sport mode for more precise and responsive handling, and unsurpassed road holding.

More factory-installed options: Automatic transmission, Metallic paint, HU-850 radio with in-dash 6-CD player, Walnut wood inlays, Mesh aluminium inlays, Leather seating.

# Accessories.

VOLVO'S ACCESSORIES HELP YOU MAKE YOUR S60 EVEN MORE SUITED TO YOUR PERSONAL NEEDS. THEY ARE THE ONLY ONES THAT HAVE BEEN TESTED TO MEET VOLVO'S EXACTING SAFETY, QUALITY AND ENVIRONMENTAL REQUIREMENTS. YOU CAN ALSO REST ASSURED THEY'RE A PERFECT MATCH TO THE TECHNOLOGY AND DESIGN OF YOUR VOLVO.



## FOR DRIVING FREEDOM

- Ashtray
- Body kit
- Business bag organizer
- CD holder glove compartment
- Cup holders, tunnel console
- Door sill moldings
- Electric cooler box
- Front/rear parking assistance
- Holder for sunglasses
- Homelink®
- Navigation system
- Rear spoiler
- Speaker upgrades
- Sport styling kit
- Volvo adapter for Apple iPod®
- Volvo digital juke box
- Volvo hands-free adapter with Bluetooth®
- 10-disc CD changer

## FOR YOUR INTERIOR COMFORT

- Floor mats rubber
- Leather care kit
- Load securing net, trunk floor
- Luggage compartment mats
- Net pocket, side panel trunk
- Shopping bag holder
- Sport floor mats
- Sport shift lever
- Sport steering wheel
- Tunnel mat

## FOR YOUR LEISURE

- Aluminium wheels
- Automatic leveling system
- Bicycle carrier
- Bicycle lift carrier
- Canoe/kayak carrier
- Car cover
- Cargo box
- Electric engine heater
- First aid kit
- Fog lights
- Hitch-mounted bike holder
- Hitch-mounted ski holder
- Hitch-mounted load basket
- Load basket carrier
- Load lashing straps
- Mud flaps front and rear
- Roof mounted load carrier system
- Snow chains
- Ski/snowboard carrier
- Trailer hitch
- Trailer hitch step
- Trailer mirrors
- Windsurfing board carrier

## FOR PRECIOUS CARGO

- Child activity bag
- Child mirror
- Jumper cables
- Padded neck cushion
- Rear centre armrest table
- Sun shades rear door
- Sun shades rear window
- Warning Triangle

See the 2007 Volvo Accessories brochure for a complete list of Genuine Volvo Accessories.

INTERIOR DESIGN. TAUPE





THE VOLVO S60 OFFERS EXCLUSIVE INTERIOR OPTIONS TO GO WITH YOUR PERSONALITY. ALL OUR LEATHER AND FABRIC UPHOLSTERIES ARE APPROVED BY OEKO-TEX. THIS MEANS THEY'RE TESTED FOR CERTAIN ALLERGY-INDUCING AND HARMFUL SUBSTANCES. MAKE YOUR CHOICES TO COMPOSE YOUR OWN INTERIOR STYLING.

#### INTERIOR DESIGN. GRAPHITE



Graphite interior, Leather Graphite upholstery (9970)



Graphite interior, Imola Light Taupe/Graphite upholstery (917C)



Graphite interior with Imola Light Taupe/Graphite upholstery (917C), Grid aluminium centre console and door panel inlays, leather-clad sports steering wheel and gear knob.

**INTERIOR DESIGN. VOLVO S60 R**

Fittingly for a car that loves the open road, the range of supple leather upholsteries and refined details beautifully match the interior feel of the Volvo S60 R to the thoroughbred spirit of its performance.



Atacama natural hide upholstery (9675)



Nordkap soft leather upholstery dark blue metallic (9576)



Gobi soft leather upholstery light beige metallic (9577)

# Exterior design.



8x18" NEBULA alloy wheels  
Silver Bright  
(incl. in Sport package T5)



7.5x17" ORESTES alloy wheels  
Silver Bright  
(incl. in Sport package 2.5T)



7.5x17" ORPHEUS alloy wheels  
Silver Bright  
(std. T5)



7.5x17" ORTRERA alloy wheels  
Silver Bright  
(incl. in Sport package 2.5T AWD)



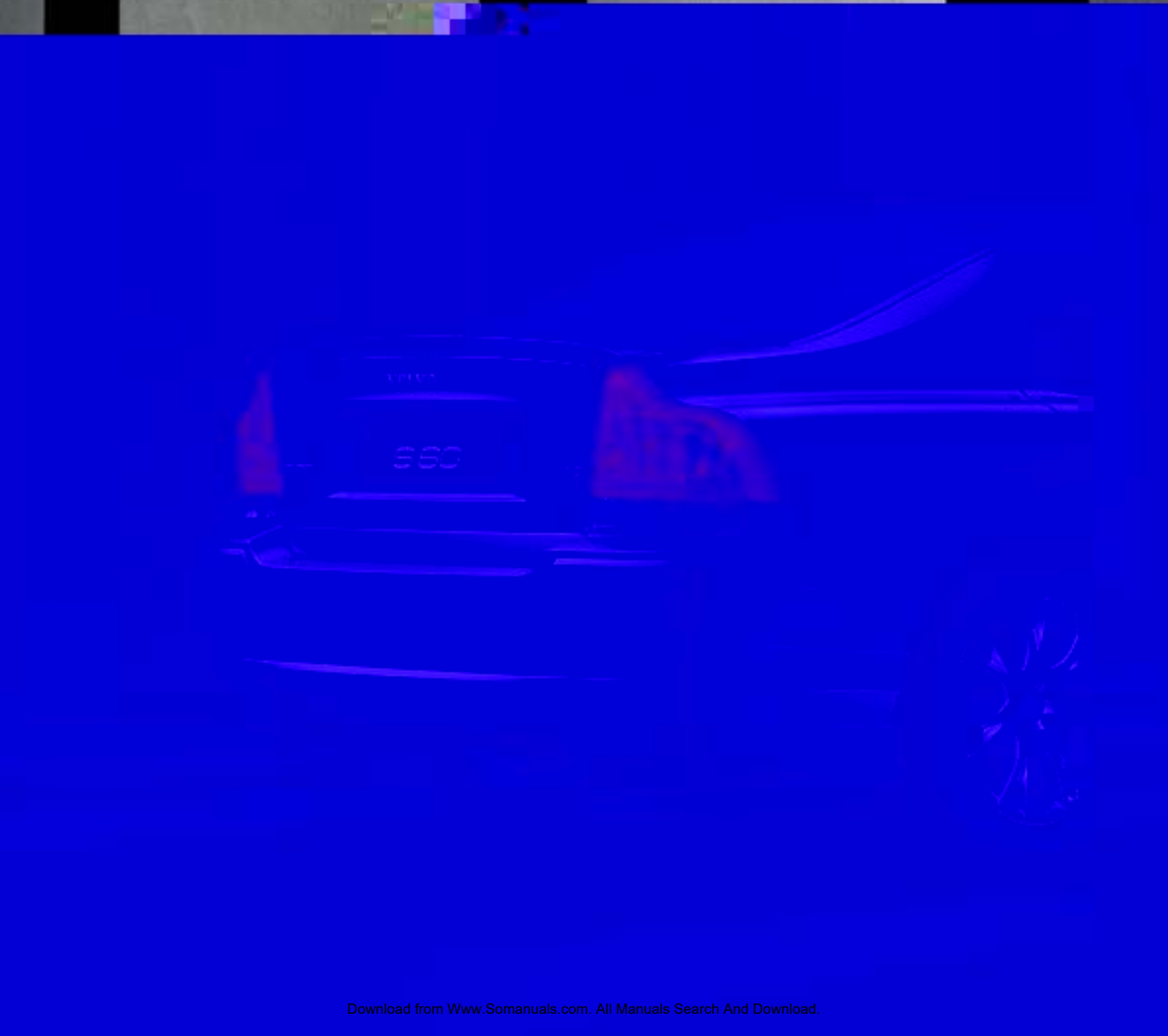
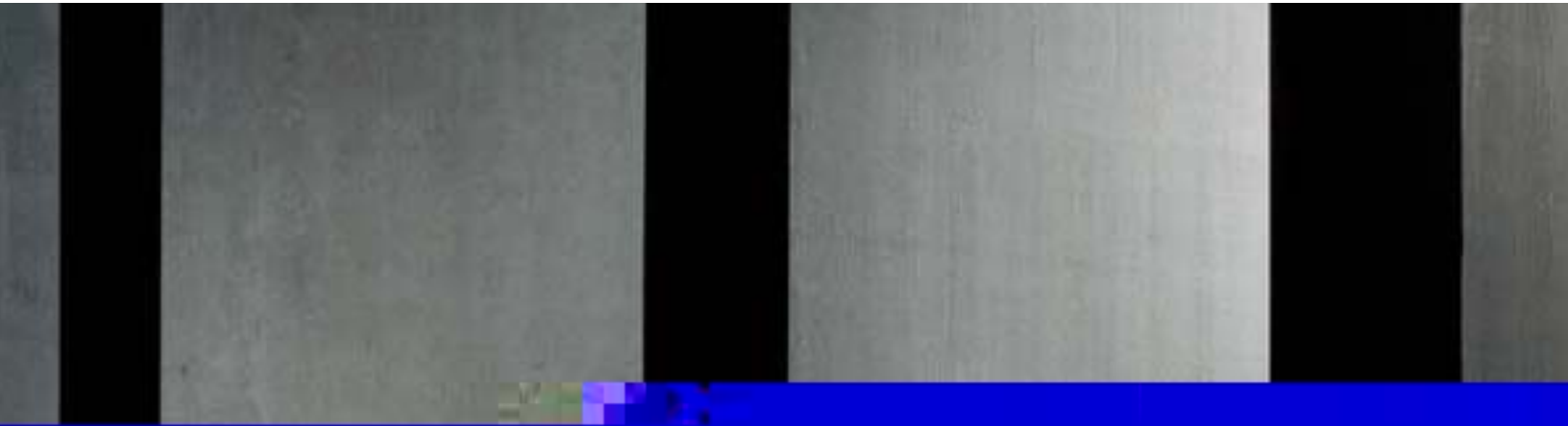
7x16" EURUS alloy wheels  
Silver Bright  
(std. 2.5T AWD)



6.5x16" ECHO alloy wheels  
Silver Bright  
(std. 2.5T)



Designed to reinforce the dynamic stance of the Volvo S60, this sports styling package comprises front spoiler, side skirts, rear lower spoiler and trunk spoiler—all colour coordinated with the car body.



**Low sports chassis**

Lowering the car's centre of gravity by approximately 1.3 cm, this dramatizes the car's sporty ride. Comprising firmer shock absorbers and a thicker rear stabilizer bar, the low sports chassis must be combined with automatic leveling.



# Standard features.

	S60 2.5T	S60 2.5T AWD	S60 T5	S60 R
<b>SAFETY</b>				
Anti-submarine seats	●	●	●	●
Daytime running lights (halogen semi-sealed with replaceable bulb)	●	●	●	●
Driver and front passenger supplemental restraint system—dual-threshold airbags	●	●	●	●
Dynamic Stability and Traction Control (DSTC)	N/A	●	●	●
Emergency trunk release	●	●	●	●
Five padded head restraints	●	●	●	●
HomeLink® remote garage door opener	P	P	●	●
Immobilizer, encrypted ignition key	●	●	●	●
Inflatable side Curtain (IC)	●	●	●	●
ISOFIX baby/child seat attachment system	●	●	●	●
Overhead-mounted seat belt reminder lights	●	●	●	●
Rear-door child-safety locks	●	●	●	●
Rear fog light with auto-off	●	●	●	●
Safe approach and home safe lighting	●	●	●	●
Seat belts: five, 3-point inertia-reel belts with automatic pretensioners; front belts have height adjustment	●	●	●	●
Security system	●	●	●	●
Side impact airbags for driver and front passenger (SIPS bags II™)	●	●	●	●
Side Impact Protection System (SIPS)	●	●	●	●
Stability and Traction Control (STC)	●	N/A	●	●
Top-tether child seat anchorage capability	●	●	●	●
Traction Control (TRACS)	N/A	●	N/A	●
Whiplash Protection Seating System (WHIPS)	●	●	●	●
<b>INTERIOR</b>				
Aluminum Mesh inlays	O	O	●	●
Auto-dim rearview mirror	P	P	●	●
Cruise control	●	●	●	●
Cup holders	●	●	●	●
Dual-zone Electronic Climate Control (ECC)	●	●	●	●
Electric folding rear head restraints	●	●	●	●
Four reading lamps	●	●	●	●
Front centre armrest	●	●	●	●
Front door-panel storage pockets	●	●	●	●
Front seat-back storage pockets	●	●	●	●
Heated front seats	●	●	●	●
Illuminated lockable glove box	●	●	●	●
Illuminated vanity mirrors in driver/front passenger sun visors	●	●	●	●
Interior cabin light delay	●	●	●	●
Leather-clad gear knob	P	P	●	●
Leather-clad parking brake handle	P	P	●	●
Leather-clad steering wheel	●	●	●	●
Luggage/cargo area lights	●	●	●	●
Power-adjustable driver seat, 8-way with 3-position memory and lumbar support	P	●	●	●
Power-adjustable passenger seat, 8-way with lumbar support	P	P	●	●
Power windows with driver and passenger auto up/down with anti-trap feature	●	●	●	●
Rear cup holders	●	●	●	●
Rear seat ventilation outlets on b-pillar	●	●	●	●
Rear window defroster with automatic timer	●	●	●	●
Split-folding rear seat 60/40	●	●	●	●
Tilt/telescopic steering wheel with illuminated cruise and audio controls	●	●	●	●
Trip computer	●	●	●	●
Two entry lights (in front door foot wells)	●	●	●	●
<b>EXTERIOR</b>				
Central power door locks with remote keyless entry, trunk and fuel filler locks	●	●	●	●
Front fog lights	P	P	●	●
Outside temperature gauge	●	●	●	●
Pollen filter for passenger compartment	●	●	●	●
Power-adjustable heated exterior rearview mirrors	●	●	●	●
Tinted windows	●	●	●	●
2-Speed windshield wipers with intermittent cycle	●	●	●	●

● = Standard    ○ = Option    P = Package    N/A = Not available



# Packages.

## **PREMIUM PACKAGE\* (2.5T, 2.5T AWD)**

A Volvo offers you long, relaxed drives and more spirit in your daily life. The Premium Package will provide you with some necessities for that extra ambience and convenience.

- Leather clad parking brake handle
- Leather seating surfaces
- Power driver's seat w/memory (2.5T)
- Power passenger's seat

\*May not be combined with Sport package.

## **CONVENIENCE PACKAGE (2.5T, 2.5T AWD, T5)**

The wide range of considerate and practical features makes life with your Volvo a truly enjoyable experience. And by adding the Convenience Package, you expand your freedom even more.

- Auto dimming mirror w/compass (2.5T, 2.5T AWD)
- HomeLink® (2.5T, 2.5T AWD)
- Level sensor
- Mass movement sensor
- Rain sensor
- Retractable side-view mirrors w/puddle lights

## **SPORT PACKAGE\* (2.5T, 2.5T AWD)**

Inspiring dynamics are always at hand, whenever you're in the mood. And with the Sport Package, you'll further enhance your driving experience.

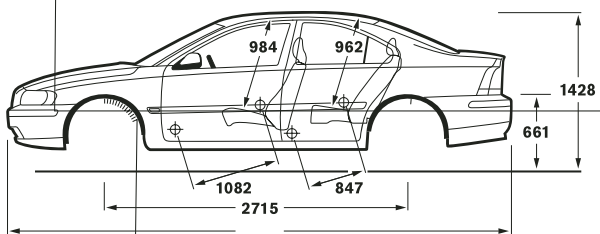
- Active Bi-Xenon lights (2.5T AWD)
- Front fog lights
- Leather-clad sport steering wheel w/aluminium inlay
- Memory for driver seat and rearview mirrors
- Power driver seat w/memory function (2.5T)
- Power passenger seat
- Rear spoiler
- Speed sensitive steering
- Sport Leather gear knob
- Sport Leather clad parking brake handle
- Sport seats w/leather seating surfaces
- Watch-style IP Gauges
- 17" alloy wheels

\*May not be combined with Premium package.

## **SPORT PACKAGE (T5)**

A package that offers superior handling, convenience, and comfort that match the uncompromising spirit of the car.

- Active Bi-Xenon lights
- Four-C active chassis
- Leather-wrapped sport steering wheel w/aluminium inlay
- Rear spoiler
- Speed sensitive steering
- Sport Leather gear shift
- Sport Leather handbrake
- Watch-style IP Gauges
- 18" NEBULA alloy wheels w/235/40/18





# Meet the family.

## S



**Volvo S40** The compact and energetic sedan.

## V



**Volvo V50** The Sportswagon—flexible, compact and full of passion for adventure.

## XC



**Volvo XC70** The rugged yet stylish all-roader.

## C



**Volvo C70** The retractable hardtop convertible that comfortably seats four adults.



**Volvo S60** The sports sedan worth getting passionate about.



**Volvo V70** The genuine family wagon—highly competitive yet comfortably versatile.



**Volvo XC90** The versatile SUV that takes you nearly anywhere with grace.

## To live life is to care about it.

EVERY MOMENT IN A VOLVO IS A MOMENT DESIGNED TO CELEBRATE LIFE. A LIFE FULL OF TWISTS AND TURNS, UPS AND DOWNS; THE LITTLE THINGS AS WELL AS THE BIG ONES. OF COURSE, TO LIVE LIFE TO ITS FULLEST ISN'T JUST ABOUT YOU CARING FOR OTHERS IS IMPORTANT AS WELL.

FOR ALMOST EIGHTY YEARS WE HAVE HELPED SAVE LIVES ON ROADS AROUND THE WORLD. NEVERTHELESS, WHEN IT COMES TO IMPROVING AUTOMOTIVE SAFETY, WE WILL NEVER BE SATISFIED. OUR DOOR-MOUNTED INFLATABLE CURTAIN IS A CASE IN POINT. AND WHILE WE'RE SEEKING NEW SOLUTIONS, OUR EXISTING SAFETY SYSTEMS ARE PREVENTING MANY ACCIDENTS FROM HAPPENING AND PROVIDING SOME REAL PROTECTION WHEN THEY DO.

OUR PASSION FOR LIFE MEANS LOOKING AFTER OUR CHILDREN'S CHILDREN, TOO. WHICH IS WHY WE TRY TO BALANCE THE NEEDS OF OUR COMPANY WITH THOSE OF SOCIETY. WITH THIS BIGGER PICTURE IN MIND, WE DEVELOP ENGINES AND TECHNOLOGY THAT HAVE LESS IMPACT ON MOTHER EARTH. THIS APPROACH ALSO EXPLAINS WHY WE PAY SO MUCH ATTENTION TO YOUR IMMEDIATE ENVIRONMENT—IN THE CAR. SIMPLY PUT, WE CARE ABOUT YOU—AND THE WHOLE CIRCLE OF LIFE.

# Care by Volvo means taking care of your ownership needs.

**CARE**  
BY VOLVO

IT'S A SIMPLE IDEA; ONE POINT OF CONTACT FOR ALL YOUR CAR OWNERSHIP NEEDS, WHETHER IT'S FINDING THE RIGHT FINANCING OR WHO TO CONTACT IN AN EMERGENCY. GET THE MOST OUT OF OWNING YOUR VOLVO—TRUST CARE BY VOLVO.

## **Volvo Car Financial Services Canada**

If you purchase or lease your Volvo through Volvo Car Financial Services Canada, you can take advantage of services designed to make financing simple and convenient. Quick debit, for instance, enables you to have your monthly payment automatically debited from a designated bank account.

## **Care by Volvo® On Call roadside assistance**

Whenever you need us, we're just a phone call away. Our nationwide network of retailers and authorized service providers are ready to assist. Whether you require roadside assistance or maps and routing information for your next trip, refer to your On Call Card and dial 1-800-263-0475—anytime, day or night. Your complimentary four-year membership activates the moment you become a Volvo owner.

## **Volvo new car warranty**

Your new car warranty provides comprehensive coverage for four years or 80,000 km's, whichever occurs first. Additional warranties cover corrosion, seat belts, the supplemental restraint system, emission systems, genuine Volvo replacement parts and genuine Volvo accessories. Should you encounter any problem with your Volvo, simply contact the nearest retailer for assistance. Where your warranty ends, Volvo Increased Protection (VIP) plans begin. To purchase the additional protection of a VIP plan, contact your local retailer.

## **Volvo genuine service**

The best way to ensure superior performance year after year is to bring your Volvo to your authorized retailer for regular maintenance. Our service advisors and factory-trained technicians are uniquely qualified to maintain your automobile. With the aid of advanced Volvo diagnostics, they follow all prescribed factory maintenance outlined in your service interval manual. Genuine Volvo service is our ongoing commitment to you: to keep your Volvo performing smoothly long after other cars have given up.

# Volvo Overseas Delivery.

VOLVO OVERSEAS DELIVERY OFFERS A UNIQUE WAY TO BUY YOUR NEW CUSTOM-BUILT CAR AS WELL AS A UNIQUE WAY TO SEE MORE OF EUROPE. AND WHEN YOU'RE DONE TRAVELING, BRING THE PLEASURE OF DRIVING A VOLVO BACK HOME. PURCHASE ANY NEW VOLVO AS PART OF THE VOLVO OVERSEAS DELIVERY PROGRAM AND ENJOY ALL THIS—AND MORE:

- Attractive pricing on Canadian models.
- Two complimentary round-trip tickets with Scandinavian Airlines.
- One free hotel night in Gothenburg, Sweden, the home of Volvo.
- An exciting Volvo Factory Tour or a visit to the new Volvo Cars Safety Centre.
- An exclusive VIP delivery experience at the Volvo Factory Delivery Centre.
- The opportunity to explore Europe in the comfort and safety of your own Volvo, either with one of our spectacular tours or on your own.
- Extensive complimentary home shipment services. Just leave your car with us. We'll ship it to you the convenient way while you relax and enjoy your complimentary flight back home.

Can you think of a better way of traveling overseas and making your souvenir part of an unforgettable experience?

If you would like to know more, contact a national customer service representative in Canada 1 (800) 663-8255 or visit [www.volvocanada.com](http://www.volvocanada.com)

# A world of colours. At your choice.



478 Maple Red metallic



426 Silver metallic †



612 Passion Red \*



477 Electric Silver metallic † \*\*



470 Sonic Blue metallic † \*\*



455 Titanium Grey metallic † \*



466 Barents Blue metallic †



452 Black Sapphire metallic † \*



467 Magic Blue metallic † \*



019 Black

† Metallic paint is an option.

\* Available for Volvo S60 R.

\*\* Only available for Volvo S60 R.

**Please note:** It is not possible to reproduce exact original shades in this brochure. Ask your Volvo retailer to show you samples.

As part of our commitment to the environment, the paper used in this brochure is recycled, and colour choices were printed directly on the page. This eliminates the need for chemically treated colour chips. A small thing perhaps, but then, every little bit helps.

**WWW.VOLVOCANADA.COM**

Specifications, features, and equipment shown in this catalogue are based upon the latest information available at the time of publication. Volvo Cars of Canada Corp. reserves the right to make changes at any time, without notice, to colours, specifications, accessories, materials, and models. For additional information, please contact your authorized Volvo retailer.

© 2006 Volvo Cars of Canada Corp. Printed in USA on 100% recyclable paper.

**MY07B C**

Volvo. for life



**VOLVO**  
Volvo Car Corporation

## Free Manuals Download Website

<http://myh66.com>

<http://usermanuals.us>

<http://www.somanuals.com>

<http://www.4manuals.cc>

<http://www.manual-lib.com>

<http://www.404manual.com>

<http://www.luxmanual.com>

<http://aubethermostatmanual.com>

Golf course search by state

<http://golfingnear.com>

Email search by domain

<http://emailbydomain.com>

Auto manuals search

<http://auto.somanuals.com>

TV manuals search

<http://tv.somanuals.com>