

SUPPLEMENTAL INSTRUCTIONS FOR:
G.E. AL-2 E.O.
IL 33-856-6

THE G.E. AL-2 E.O. BREAKER COMES IN TWO VERSIONS, IL 33-856-6 SUPPLIED WITH YOUR RETROFIT KIT IS FOR THE ANGLE FRAME VERSION. IF YOUR BREAKER IS A FORMED STEEL SIDE SHEET VERSION, FOLLOW THE REVISED STEPS TO IL 33-856-6 AS OUTLINED BELOW.

REVISE STEP 4A, PARAGRAPH A (PAGE 2) TO READ:

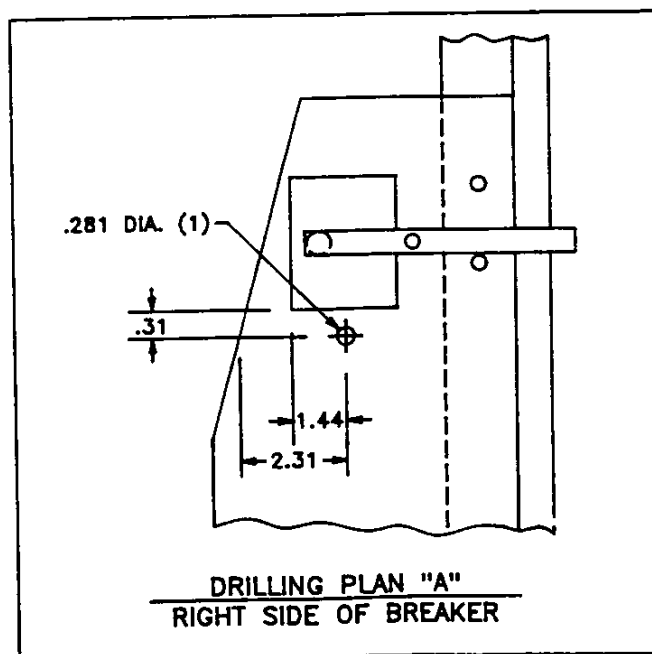
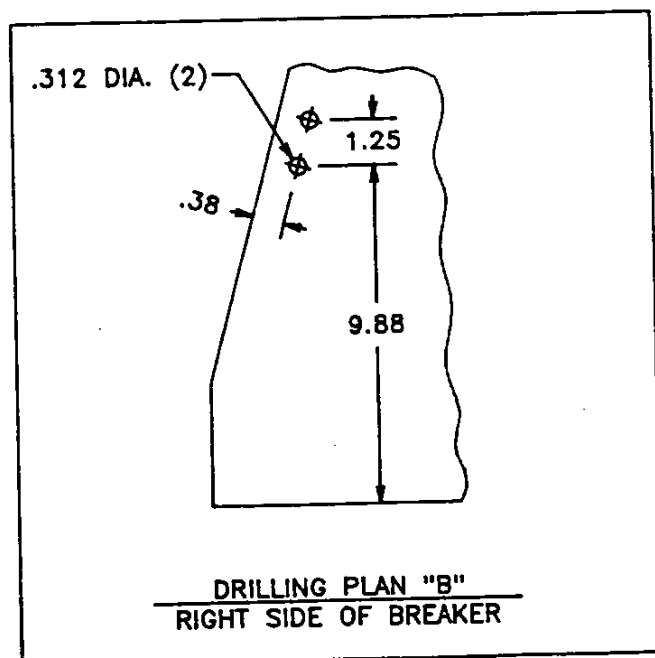
STEP 4: A. INSTALL ON THE BOTTOM OF THE AUX. CT MODULE A MOUNTING BRACKET AT EACH END WITH TWO SPACERS BETWEEN. THE LARGE MOUNTING HOLE SHOULD BE ON THE SIDE OF THE WHITE PLUG AND THE LARGER SIDE OF THE MOUNTING BRACKET SHOULD FACE IN. NOTE: THE SPACERS ARE IN 8258A76G18.

STEP 6: G. INSTALL THE NEW HARDWARE PROVIDED TO CONNECT THE POLE UNIT AND DTA RESET TO THE MICARTA CROSS BAR AS SHOWN.
NOTE: SOME BREAKERS HAVE A WIDE MICARTA CROSS BAR, THIS MAY REQUIRE THE SLOT IN THE DTA RESET TO BE FILED OUT FOR CLEARANCE.

STEP 7: F. MOUNT THE MOUNTING BRACKET TO THE SIDE OF THE DTA AS SHOWN WITH THE HARDWARE PROVIDED. NOTE: USE THE MOUNTING BRACKET SUPPLIED IN 8258A76G18 ON FORMED STEEL SIDE SHEET BREAKERS.

STEP 8: A. LAYOUT AND DRILL THE RIGHT SIDE SHEET OF THE BREAKER PER DRILLING PLANS 'A' AND 'B' BELOW. (DO NOT USE DRILLING PLAN 'B' IN THE IL.) THE LOWER SET OF HOLES WILL BE USED LATER TO MOUNT THE TRIP UNIT ASSEMBLY.

STEP 8: B. MOUNT THE DTA ASSEMBLY ON THE INSIDE OF THE SIDE SHEET WITH THE SPACER BETWEEN.



Free Manuals Download Website

<http://myh66.com>

<http://usermanuals.us>

<http://www.somanuals.com>

<http://www.4manuals.cc>

<http://www.manual-lib.com>

<http://www.404manual.com>

<http://www.luxmanual.com>

<http://aubethermostatmanual.com>

Golf course search by state

<http://golfingnear.com>

Email search by domain

<http://emailbydomain.com>

Auto manuals search

<http://auto.somanuals.com>

TV manuals search

<http://tv.somanuals.com>