

## OWNER'S MANUAL

# **XTR-145/265/335** **Total Band Protection™** **LASER-RADAR** **DETECTOR**

### The Whistler Group Corporate Headquarters

3604 NW Frontage Rd. • Bentonville, AR 72712  
Tel 479.273.6012 • Fax 479.273.2927

### Whistler Customer Return Center

551 N. 13th St. • Rogers, AR 72756  
Customer Service Tel 800.531.0004

[www.whistlergroup.com](http://www.whistlergroup.com)

P/N 2060018, © 2009 The Whistler Group, Inc.



Dear Whistler Owner,

If you have questions concerning the operation of this Whistler product please call:

**CUSTOMER SERVICE**  
**1-800-531-0004**

Monday - Friday • 8:00 am - 5:00 pm CT  
or visit our website

[www.whistlergroup.com](http://www.whistlergroup.com)

Please keep the receipt in a safe place. You may register your product online at [www.whistlergroup.com](http://www.whistlergroup.com). For warranty verification purposes, a copy of your dated store receipt must accompany any unit sent in for warranty work. If the unit is returned without a dated store receipt, an out of warranty service charge applies.

## INTRODUCTION

**Note: Your warranty period begins at the time of purchase. The warranty is validated only by the dated store receipt!** Please record the serial number of the unit in the space provided in the warranty section of the manual.

To fully acquaint yourself with the operation of your Whistler detector and to better understand the differences between detecting radar, laser and safety radar signals, we recommend reading this entire manual or visiting our FAQ page on our website [www.whistlergroup.com](http://www.whistlergroup.com)

Enjoy your Whistler detector and please drive safely.

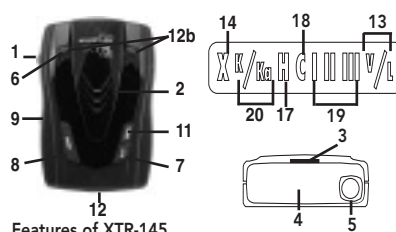
Sincerely,

The Whistler Group, Inc.

## TABLE OF CONTENTS

Model Features Summary.....	3 - 6
<b>Installation.....</b>	<b>7 - 8</b>
• Mounting Guidelines	7
• Windshield Mounting	7
• Power Connection And Fuse Replacement	8
<b>Operation.....</b>	<b>8 - 12</b>
• Power On Self Test & Volume	8
• Integrated Real Voice®	8
• Feature Engaged Confirmation	9
• Self Test Mute	9
• Setting Saver	9
• Auto Quiet Mode	9
• Quiet Mode	9
• City / City 1 / City 2 Modes	10
• Highway Mode	10
• Twin Alert Periscopes	11
• Dim / Dark Modes	11
• Engaging / Disengaging VG-2 Detection	11
• Vehicle Battery Saver Mode	12
• Stay Alert	12
<b>Laser &amp; Radar Alerts.....</b>	<b>13 - 14</b>
• Laser Audio / Visual Alerts	13
• Laser Tips	13
• Pulse Protection®	13
• Safety Warning System®	14
<b>VG-2 Alerts.....</b>	<b>14</b>
<b>POP™ Mode.....</b>	<b>15</b>
<b>Option Select Mode.....</b>	<b>15</b>
• Reset Features	16
<b>Troubleshooting Guide.....</b>	<b>16 - 17</b>
• Care & Maintenance	17
<b>Are Detectors Legal?.....</b>	<b>18</b>
• FCC Information	18
<b>Speed Facts.....</b>	<b>19 - 21</b>
• Radar Facts	19
• Laser Facts	19-20
• Other Speed Detection Systems	20 - 21
<b>Warranty Information.....</b>	<b>22 - 24</b>
<b>Specifications.....</b>	<b>25</b>
<b>Accessories.....</b>	<b>26</b>

## XTR-145 FEATURES

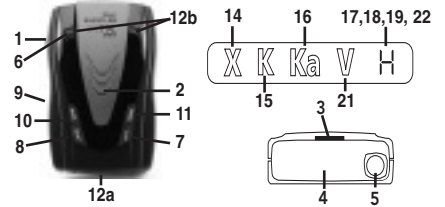


12  
12b

- Features of XTR-145**
- Total Band Protection™
  - Icon Display
  - 360° Protection
  - VG-2 Cloaking
  - 3 City Modes

- Quiet/Auto Quiet Mode
- Vehicle Battery Saver
- Alert Priority
- Twin Alert Periscopes

## XTR-265 FEATURES

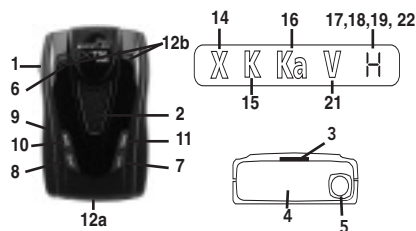


12a  
12b

- Features of XTR-265**
- Total Band Protection™
  - Numeric Icon Display
  - Detects POP™ Mode
  - 360° Protection
  - VG-2 Cloaking
  - 3 City Modes
  - Quiet/Auto Quiet Mode

- Dim/Dark Mode
- Stay Alert
- Setting Saver
- Vehicle Battery Saver™
- Safety Warning System™
- Alert Priority
- Twin Alert Periscopes

## XTR-335 FEATURES



12a  
12b

- Features of XTR-335**
- Total Band Protection™
  - Numeric Icon Display
  - Detects POP™ Mode
  - 360° Protection
  - Real Voice®
  - VG-2 Cloaking
  - 3 City Modes

- Quiet/Auto Quiet Mode
- Dim/Dark Mode
- Stay Alert
- Setting Saver
- Vehicle Battery Saver™
- Safety Warning System™
- Alert Priority
- Twin Alert Periscopes

## FEATURE DESCRIPTIONS

Whistler's ergonomic and user-friendly design provides a new level of operating convenience. Special features include:

**Note: Not all units have all features listed.**

1. **Bracket Release Button** – provides quick and easy release of the mounting bracket.
2. **Speaker** – provides distinct audio warnings for X, K, Ka band radar, safety radar, laser and VG-2.
3. **Mounting Bracket Location** – slot holds mounting bracket firmly.
4. **Radar Antenna** – compact, high-efficiency antenna receives radar signals.
5. **Front Laser** – high gain optical lens provides increased sensitivity and field of view for leading-edge laser detection.
6. **Rear Laser** – an integrated optical waveguide provides superior detection of laser signals transmitted from behind.
7. **City Button** - reduces the annoyance of false alerts typically encountered in urban driving areas.
8. **Quiet Button** - pressing QUIET before a radar signal is detected engages Auto Quiet Mode which provides "clicking" sounds after the initial warning. Pressing QUIET during a radar encounter silences audio alerts, while allowing visual alerts to keep you informed.
9. **Power / Volume Control** – turns unit on/off and adjusts audio level.
10. **Dim Dark** - engages Dim/Dark modes
11. **Menu Button** - (XTR-145) turns VG2 on/off. (XTR-265/335) enters option select mode.
12. **Icon Display** - offers easy-to-read display to indicate power, city mode, radar band identification, and signal strength.

5

## FEATURE DESCRIPTIONS

- 12a. **Numeric Icon Display (XTR-265/335)** combines icon display with a 7 segment digital display that shows signal strength indication and band identification.
  - 12b. **Dual Alert LED Periscope** - provides additional visual alerts.
  13. **VG-2/Laser Icon** – indicates the unit is receiving VG-2 or laser signals.
  14. **X-band Icon** - indicates the unit is receiving a X-band signal.
  15. **K-band Icon** - indicates the unit is receiving a K-band signal.
  16. **Ka-band Icon** - indicates the unit is receiving a Ka-band signal.
  17. **H** - indicates unit is in Highway mode.
  18. **C - City Icon** - indicates that the unit is operating in city mode.
  19. **Signal Strength Icon** - indicates the strength of the signal being detected.
  20. **K/Ka-band Icon** - shows the unit is receiving a K or Ka band signal. K/Ka indicator will flash for Ka band.
  21. **V** - indicates that the unit is receiving a VG-2 signal. Indicates that VG-2 is engaged.
  22. **L** - indicates that the unit is receiving a laser signal.
- **Total Band Protection™** - Complete Band Coverage that detects laser, radar, VG-2 and safety radar bands.

6

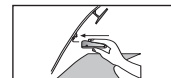
## INSTALLATION

### Mounting Guidelines

- Mount the unit as low as possible near the center of the windshield.
- Do not mount the unit behind wipers, ornaments, mirrored sunscreens, etc. These obstructions have metal surfaces which can affect radar and laser signals and reduce critical warning time. (Regular tinted glass does not affect reception.)
- Some windshields have an Instaclear™ or Electriclear™ type coating, which affects radar signals. Consult your dealer or the owner's manual to determine if your windshield has this coating.
- Avoid placing unit in direct contact with the windshield.
- To reduce the possibility of theft, conceal the unit when not in use.

### Windshield Mounting

- Install the two suction cups and rubber bumper onto the bracket by fitting them into their holes.
- Press the suction cups onto the windshield at the location you have chosen.



**IMPORTANT:** Some newer cars have a plastic safety coating on the inside of the windshield. The windshield bracket may leave permanent marks on this type of surface. To find out if your vehicle has this type of windshield, check the owner's manual or ask your dealer. We recommend that you do not leave the suction cup bracket on the windshield in direct sunlight. If the detector is removed, this may cause blistering of the dash in some vehicles.

7

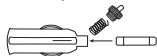
## INSTALLATION

### Power Connection

- Plug the small end of the power cord into the unit's power jack.
- Plug the large end into the vehicle's cigarette lighter.

### Fuse Replacement

The lighter socket plug is equipped with a replaceable 2 amp 3AG fuse located behind the silver tip. To replace the fuse, carefully unscrew the tip of the plug.



**IMPORTANT:** Unscrew slowly. The tip contains a spring which may fly out when disassembling. Insert the new fuse with the spring and screw on the tip. **With use, the screw cap on the plug may loosen. Retighten it occasionally.**

## OPERATION

### Power On Self Test & Volume

Each time your Whistler detector is turned on, an automatic self-test sequence confirms that the speaker and visual displays are functional. To increase the volume, continue turning the volume knob.

### Integrated Real Voice® (XTR-335)

When selected, Real Voice® will be used to articulate the following:

1. Band Identification
2. Safety Warning System messages
3. Feature Selection

Voice OFF/ON is selected by holding quiet button for approximately 2 seconds. Voice ON will announce "caution", Voice OFF will give a double beep.

8

## OPERATION

### Feature Engaged Confirmation

Each time a button is pressed, one beep confirms the feature is "on", two beeps confirm feature "off".

### Self Test Mute

Simply press the Quiet button during the self-test sequence to cancel the self-test audio. This will not affect radar/laser alerts. To restore the self-test audio, simply press the Quiet button during the next self-test.

### Setting Saver (XTR-265/335)

Setting Saver saves your personalized settings so that when the detector is turned off and then on again, you do not have to re-enter them.

### Auto Quiet Mode

Pressing QUIET before a radar signal is detected provides an alternate alert pattern, consisting of four beeps (indicating X, K, Ka or Safety Radar) followed by clicking. The clicking will continue for as long as the detected signal is present or any new signal is detected within 20 seconds, becoming more rapid as the strength of the signal increases.

- Press Quiet (before a signal is detected) to engage Auto Quiet.
- Once the Auto Quiet mode is engaged, you may cancel the audio alarm by pressing Quiet.
- Press Quiet (when the unit is not alarming) to cancel Auto Quiet mode.

### Quiet Mode

Pressing Quiet cancels the audio during an alert and any new alert within 20 seconds. After approximately 20 seconds, 2 beeps are provided on any new alert, and the unit then remains quiet.

- Press Quiet to cancel the audio.
- Press Quiet a second time during an alert to restore the standard audio alert pattern; or turn the unit off, then on.

9

## OPERATION

### City/City I/City II Mode

Whistler's Three Stage City Mode is designed to reduce the annoyance of automatic door openers, intrusion alarms and other devices which share frequencies with police radar. Generally, X band is used for these devices.

- Press City button to cancel Highway mode and engage City Mode. The display will switch from "H" to "C".
- Press City button again to enter City I Mode.
- Press City button again to enter City II Mode.

**Note:** After 3 seconds, "I" or "II" City Mode indicator turns off on the XTR-145.

- Pressing City button a fourth time cancels City II Mode and returns the unit to Highway Mode.

In City Mode, weak speed/safety radar signals give an initial alarm of two beeps, and then remains quiet unless the signal becomes very strong. When the signal strength increases, two additional beeps are provided. City I and City II Modes operate the same as Highway Mode, but in City I Mode, only the X band sensitivity is lowered. In City II Mode, X-band is not detected.

**Caution:** Some towns/small cities may still be using X band radar. City Modes do not change the audio alert for laser or VG-2.

### Highway Mode

Highway mode provides full audio warnings any time radar (X, K, Ka, Safety Radar) or laser signals are detected, and is recommended for open road driving.

10

## OPERATION

### Twin Alert Periscopes

Whistler's new Twin Alert Periscopes provides an additional attention getting visual alert. The two extra LED's flash on and off when the unit alarms to provide a unique visual alert. This alert can be programmed, through the Option Select Mode to: 1. flash for all alarms, 2. remain on, or 3. turn LEDs off completely. (XTR-265/335 only)

### Dim/Dark Mode (XTR-265/335)

Dim/Dark Mode reduces the illumination of the display.

- Press the Dark button to reduce illumination to a Dim setting.
- Press the Dark button a second time engages Dark Mode.

In Dark mode display illumination is further reduced. Dim or dark can be engaged during an alert. In Dark Mode, the display goes dark for as long as a signal is being detected and for 20 seconds after, then the display returns to the dimmer setting.

- Pressing the Dark button a third time restores full illumination to the display.

### Engaging/Disengaging VG-2

See Option Select Mode to turn this feature on.

11

## OPERATION

### Vehicle Battery Saver Mode

The Vehicle Battery Saver Mode automatically shuts off your detector after 6 hours. The timer is reset if the detector is turned off, unplugged or any button is pressed before the time has expired. The detector will alert you with an audible and visual warning before it shuts off. During this warning, you can momentarily reset the unit by pressing any button. This will reset the timer. If the unit has automatically turned itself off, press any button to turn the unit back on.

### Stay Alert Feature (XTR-265/335)

The Stay Alert Feature is designed to test a driver's alertness. To engage (when unit is not alarming):

- Press and hold the City button for less than 2 seconds. The "H" or "C" will flash indicating Stay Alert is activated. Within 30-60 seconds two beeps are sounded; to show alertness, the driver must press either the City, Menu or Quiet button within 3-5 seconds. If the button is pressed within 3-5 seconds, the cycle is repeated. If a button was not pressed within 3-5 seconds, the alarm sounds and the display flashes all the LEDs.
- Press Dark to cancel Stay Alert.

**WARNING!!!** Stay Alert is NOT intended as a substitute for adequate rest. You should NOT operate a vehicle if you are drowsy. During extended periods of vehicle operation, you should take frequent breaks. Improper reliance on the Stay Alert may result in vehicle damage, personal injury or death.

**NEVER OPERATE A VEHICLE IF YOU ARE DROWSY.**

12

## LASER/RADAR ALERTS

### Laser Audio / Visual Alerts

When a laser signal is detected, the display indicates alert by illuminating the "V/L" and scrolling the signal strength indicators from right to left or display indicates an "L" on the display. The audio alert is continuous for a minimum of 3 seconds.

### Laser Tips

If you are the targeted vehicle, a laser gun can often determine your speed within a few seconds after you receive an alert. In this situation there is generally no time to safely adjust your speed. However, if you are traveling near or behind the targeted vehicle and receive an alert, response time should be sufficient. Any laser alert, regardless of duration, requires immediate action!

### Pulse Protection®

Pulse (or instant-on) radar is more difficult to detect than conventional radar because it remains "off" until activated to measure the speed of a targeted vehicle. When a pulse type transmission is detected, your Whistler detector sounds an urgent 3-second audio warning. Models XTR145 will flash the Alert strength indicators at their fastest rate; on models XTR-265/335 a "P" will be displayed. After the 3-second pulse alert, the standard alert pattern continues for as long as the signal is present. It is important to respond promptly to a pulse alert, since warning time may be minimal.

13

## LASER/RADAR ALERTS

**Safety Warning System/Audio/Visual Alerts** When your Whistler detector detects a safety radar signal, it provides a distinctive audio tone and the Numeric Icon display shows an "S." and a decimal point when a Safety radar signal is detected. (XTR-265/335)



**Note:** You will not be able to receive SWS alerts if transmitters are not located in your area.

## VG-2 ALERTS

### VG-2 Detection Mode

The VG-2, also known as a "radar detector detector," is a special receiver used by police to detect signals radiated by a radar detector. See page 21 for more information on VG-2.

When a VG-2 signal is detected, the VG-2 alert is sounded. After 3 seconds, the audio is cancelled and the VG-2 indicator flashes at a slower rate. Every 30 seconds, the detector checks for a VG-2 signal. This cycle is repeated if the VG-2 signal is detected again. If no signal is detected, two beeps are provided indicating an "all clear" condition.

During the period a VG-2 signal is detected, a radar signal cannot be detected. However, because the VG-2 alert has confirmed that a patrol car is nearby, you are already aware of the potential for speed monitoring and can adjust your speed accordingly. Laser detection is not affected while a VG-2 signal is detected.

14

## POP™ MODE ALERTS

**POP™ Mode Alerts** (XTR-265/335) Because POP™ Mode radar utilizes the same K or Ka band frequencies, POP™ Mode Alerts will be displayed as regular radar alerts.

## OPTION SELECT MODE

**Option Select Mode** (XTR-145) To turn VG-2 ON/OFF, press the Menu button and the "V" icon will illuminate indicating VG-2 is engaged. Press the Menu button again to disengage VG-2.

**Option Select Mode** (XTR-265/335) Press the Menu button to enter Option Select Mode. Each press of the Menu button changes to the next selectable feature.

The Dark (**D**) button and the Quiet (**Q**) button turns the feature ON/OFF or Blinking. The decimal point illumination indicates whether a feature is on or off. A button must be pressed within 20 seconds or Option Select Mode will automatically be exited.

**Model: XTR-265**

Feature:	Option:
VG-2 (default = OFF)	<b>D</b> for ON, <b>Q</b> for OFF
Dual LED Alert Periscope (default = Blinking with alert)	<b>D</b> or <b>Q</b> for ON, OFF, BLINKING

**Model: XTR-335**

Feature:	Option:
VG-2 (default = OFF)	<b>D</b> for ON, <b>Q</b> for OFF
Dual LED Alert Periscope (default = Blinking with alert)	<b>D</b> or <b>Q</b> for ON, OFF, BLINKING
POP™ Mode (default = ON)	<b>D</b> for ON, <b>Q</b> for OFF
SWS (default = ON)	<b>D</b> for ON, <b>Q</b> for OFF

15

## RESET FEATURES

All user features can be reset to factory settings.

### Default Factory

1. Unplug Power Cord from unit.
2. Press and hold Quiet.
3. Plug the Power Cord into the unit. (Power switch turned on)
4. Wait for 2 beeps.
5. Release the Quiet button.

**Unit is now reset.**

### Default Factory Settings are:

- Highway Mode.
- Dim/Dark Mode to full illumination of display.
- Auto Quiet Mode OFF.
- VG-2 Detection Mode OFF.
- Self Test Mute OFF
- Dual LED Alert Periscope to Flash
- POP™ Mode ON (XTR-335)

## TROUBLESHOOTING GUIDE

Your Whistler detector is expertly engineered and designed to exacting quality standards to provide you with reliable, trouble-free operation. If your unit has been correctly installed following the guidelines in this manual, but is not operating optimally, please refer to the troubleshooting guide below.

### PROBLEM: No display or audio.

Check fuse in plug; replace if necessary with a 2 amp 3AG type. Check fuse for lighter socket; replace if necessary. Make sure cigarette the lighter socket is clean.

### PROBLEM: Audio alerts are not loud enough.

Cancel Auto Quiet Mode or City Mode. Check audio level setting (see pg.8).

16

## TROUBLESHOOTING GUIDE

**PROBLEM:** The unit alarms when vehicle hits bumps. Check for loose lighter socket; tighten and clean. Check connections at both ends of power cord. Substitute another cord to determine if the cord is defective. Return the defective cord to the factory.

If difficulties occur which cannot be solved by information in this Troubleshooting Guide, please call Whistler Customer Service at **1-800-531-0004** or visit our FAQ page at [www.whistlergroup.com/faq-detectors.asp](http://www.whistlergroup.com/faq-detectors.asp) before returning your unit for service.

## Care & Maintenance

During the summer months, avoid prolonged exposure to direct sunlight by removing your unit from the dash when your vehicle is parked for an extended period of time. Do not spray water, cleaners, or polishes directly onto the unit. The spray may penetrate through the openings and damage the unit. Also, do not use any abrasive cleaners on the unit's exterior.

17

## ARE DETECTORS LEGAL?

### In Most States YES!

Laser-Radar detectors are legal in every state (with the exception of Virginia and Washington, D.C., which have local regulations restricting the use of radar receivers in any vehicle) when used in automobiles or light trucks (under 10,000 lbs.).

Concerning trucks over 10,000 lbs., the Federal Highway Administration (FHWA) issued a regulation, effective January, 1994 which prohibits radar and laser detector use in these types of vehicles nationally. Prior to the FHWA regulation, laws existed in the state of New York restricting the use of radar detectors in trucks over 18,000 lbs. and in Illinois in trucks over 26,000 lbs.

### FCC Information

**FCC ID: HSXWH10 - XTR-145/265/335**

**FCC ID: HSXWH21 - XTR-145/265/335**

This device complies with part 15 of the FCC Rules. Operation is subject to the following two conditions:

- (1) This device may not cause harmful interference.
- (2) This device must accept any interference received, including interference that may cause undesired operation.

**IMPORTANT:** FCC requirements state that changes or modifications not expressly approved by Whistler could void the user's authority to operate the equipment.

18

## SPEED MONITORING

### Radar Facts

A radar gun operates by transmitting radio waves at certain frequencies which reflect off objects and are then picked up by the radar gun's receiving section. When a radar beam reflects off a moving target, a measurable frequency shift occurs. The radar unit converts this shift into miles per hour to determine your vehicle's speed. Currently, the FCC (Federal Communications Commission) permits operation of traffic radar guns at X Band (10.500 - 10.550 GHz), K Band (24.050 - 24.250 GHz), and Ka Band (33.400 - 36.000 GHz).

**Note:** A radar detector will only alarm if an officer is transmitting on any one of the above radar bands.

### Laser Facts

It's well documented that many radar guns cannot reliably provide the speed of a targeted vehicle that is traveling in a group of vehicles. In contrast, a laser gun can target a specific vehicle out of a line of traffic and determine its speed. The advantage of laser over radar in terms of target identification is the result of the laser gun's narrow beam. A radar transmission can cover more than a four-lane highway at a distance of 1,000 feet, compared with a laser transmission which covers about 3 feet at the same distance. For best protection, keep these points, listed on the following section, in mind:

19

## SPEED MONITORING

### Laser Facts (Continued)

- Because your vehicle's license plate or headlights are the laser gun's primary targets, mounting your Whistler detector on the dashboard can improve laser detection at short range.
- Do not follow closely behind any vehicle you cannot see through. If you can't see past a vehicle ahead of you, chances are your detector won't either.
- The receiving range of your laser detector will not be the same as a radar detector. Laser guns are most often used at short range.

Whistler Laser/Radar detectors receive all current laser guns which operate at a laser wavelength of 905 +/- 10nm.

### Other Speed Detection Systems

Several techniques other than radar or laser are used to measure vehicle speeds. When these methods are being used, no detector can provide a warning. These techniques include:

- **Pacing** - A patrol car drives behind you and matches your driving speed.
- **Vascar/Aircraft** - The time it takes a vehicle to travel a known distance is measured.

20

## SPEED MONITORING

### Radar Detector Detectors (VG-2)

**Spectre** The Interceptor VG-2, or simply VG-2, is a microwave receiver used by police to detect signals radiated by the local oscillator of a radar detector. Because its purpose is to identify persons driving with radar detectors, the VG-2 is known as a "radar detector detector". The VG-2 is a tool used by the police to identify radar detector equipped vehicles. If caught, in a state where detectors are illegal, (see page 18), drivers risk losing their radar detector and receiving a fine. In addition, instant-on radar is almost always used in combination with a VG-2, leaving unsuspecting motorists vulnerable to receiving two tickets—one potentially for speeding, the other for possession of a detector. Having a radar detector capable of detecting the VG-2 may alert you to the presence of a speed trap.

*For more information on speed monitoring technologies, please visit our F.A.Q. page on our website: [www.whistlergroup.com](http://www.whistlergroup.com)*

**It is the responsibility of the individual radar detector operator to know and understand the laws in your area regarding the legality of the use of radar detectors.**

**NOTE:** Having a radar detector capable of detecting the VG-2 may alert you to the presence of a speed trap. The newest tool Police have to detect radar detectors is called Spectre. Spectre can detect the majority of undetectable (VG-2) laser/radar detectors on the market.

21

## WARRANTY INFORMATION

### Consumer Warranty

This Whistler Laser/Radar detector is warranted to the original purchaser for a period of one year from the date of original purchase against all defects in materials and workmanship. This limited warranty is void if the unit is abused, modified, installed improperly, if the housing has been removed, or if the serial number is missing. There are no express warranties covering this product other than those set forth in this warranty. All express or implied warranties for this product are limited to one year. Whistler is not liable for damages arising from the use, misuse, or operation of this product.

### Service Out of Warranty

Units will be repaired at "out of warranty" service rates when:

- The unit's original warranty has expired.
- A dated store receipt is not supplied.
- The unit has been returned without its serial number.
- The unit has been abused, modified, installed improperly, or had its housing removed.

**Service Under Warranty** During the warranty period, defective units will be repaired without charge when returned with a dated store receipt to the address below. Units returned without dated store receipt will be handled as described in section "**Service Out Of Warranty.**" Due to the specialized equipment necessary for testing a laser/radar receiver, there are no authorized service stations for Whistler brand detectors other than Whistler. When returning a unit for service, please follow these instructions:

22



## WARRANTY INFORMATION

1. Ship the unit in the original carton or in a suitable sturdy equivalent, fully insured, with return receipt requested to:

**Whistler Repair Dept.**  
551 N. 13th St.  
Rogers, AR. 72756

Please allow **3 weeks turn around time.**

**IMPORTANT:** Whistler will not assume responsibility for loss or damage incurred in shipping. Therefore, please ship your unit insured with return receipt requested. **COD's will not be accepted!**

2. Include with your unit the following information, clearly printed:

- Your name and street address (for shipping via UPS), a daytime telephone number and an e-mail address, if applicable.
- A detailed description of the problem (e.g., "Unit performs self-test but does not respond to radar").
- A copy of your dated store receipt or bill of sale.

3. Be certain your unit is returned with its serial number. For reference, please write your unit's serial number in the following space: \_\_\_\_\_.

**Units without serial numbers are not covered under warranty.**

**IMPORTANT:** To validate that your unit is within the warranty period, make sure you keep a copy of your dated store receipt. You may register your warranty online at [www.whistlergroup.com](http://www.whistlergroup.com), however, for warranty verification purposes, a copy of your dated store receipt must accompany any unit sent in for warranty work.

23

## WARRANTY INFORMATION

### Service Out of Warranty (Continued)

The minimum out of warranty service fee for your Whistler detector is \$35.00 (U.S.). If you require out of warranty service, please return your unit as outlined in the section "Service Under Warranty" along with a certified check or money order for \$35.00. Payment may also be made by MasterCard, VISA or American Express; **personal checks are not accepted.**

In the event repairs cannot be covered by the minimum \$35.00 service fee, you will be contacted by a Whistler technical service specialist who will outline options available to you. If you elect not to have your unit repaired, it will be returned to you along with your certified check or money order.

**IMPORTANT:** When returning your unit for service, be certain to include a daytime telephone number and an email address (if applicable).

### Customer Service

If you have questions concerning the operation of your Whistler detector, or require service during or after the warranty period, please call Customer Service at:

**1-800-531-0004.**

Representatives are available to answer your questions Monday - Friday from 8:00 a.m. to 5:00 p.m. (CT).

[www.whistlergroup.com](http://www.whistlergroup.com)

24

## SPECIFICATIONS

### Laser Wavelength:

905 ± 50 nanometers (nm)

### Radar Frequencies:

10.500 - 10.550 GHz (X Band)  
24.050 - 24.250 GHz (K Band )  
33.400 - 36.000 GHz (Ka Superwideband)

### Operating Temperature Range:

-10 C to +70 C (14 F to +158 F)

### Power Requirements:

Operational 12 to 15 volts DC, 250mA nominal  
Vehicle Battery Saver, 30mA nominal.

One or more U.S. patents may apply:

#5,146,227, #5,379,456, #5,666,120, #5,990,821  
#7,215,276

POP™ Mode is a trademark of MPH Industries, Inc.

SWS® is a trademark of Safety Warning System L.C.



Specifications are subject to change without notice.

25

## ACCESSORIES

These and other accessories can be ordered directly from Whistler by calling **1-800-531-0004** or visiting our online store at [www.whistlergroup.com](http://www.whistlergroup.com)

Order #	Description	Price
202138	Visor Bracket	\$ 6.95
202151	Windshield Bracket Kit	\$ 9.95
206552	Straight Power Cord (5')	\$14.95
206553	Coiled Power Cord (7')	\$15.95
206880	Hardwire Kit (10' ) (for wiring to fuse box)	\$ 9.95
206666	Modular* Cord Package (includes coiled and straight cords, and power adapter)	\$17.95
159032	Package of 8 Suction Cups	\$ 2.95
402081	Non Skid Dash Pad	\$ 6.95
206660	Straight Modular Cord & Socket Multiplier	\$11.95
206661	Coiled Modular Cord & Socket Multiplier	\$12.95
500501	Zippered Travel Case	\$ 9.95

\*Modular: Interconnecting pieces cord and plug.  
**Shipping and handling (per order) \$5.00 Prices are subject to change without notice.**

26

## Free Manuals Download Website

<http://myh66.com>

<http://usermanuals.us>

<http://www.somanuals.com>

<http://www.4manuals.cc>

<http://www.manual-lib.com>

<http://www.404manual.com>

<http://www.luxmanual.com>

<http://aubethermostatmanual.com>

Golf course search by state

<http://golfingnear.com>

Email search by domain

<http://emailbydomain.com>

Auto manuals search

<http://auto.somanuals.com>

TV manuals search

<http://tv.somanuals.com>