



Internally Mounted Ventilators – Install Quick Specs VEN060I

Installation Type & Discharge Direction

Mounted in hood. Can be mounted for vertical or horizontal discharge, **depending on the hood specified (see individual hood specifications)**

CFM Rating

640 CFM – Single Blower
1280 CFM – Dual Blower applications

Minimum Duct Size

8" round @ 640 CFM
10" round @ 1280 CFM

Maximum Equivalent Straight Duct Length

50 feet

Equivalent Straight Lengths

- 1 foot of 8" or 10" duct = 1 foot
- 1 foot of 3 1/4" x 14" rectangular = 1 foot
- 8" round 90 degree Elbow = 5 feet
- 10" round 90 degree Elbow = 3 feet
- Wall or Roof Cap = 2 feet

Standard Features

- Adaptable to all Wind Crest hoods
- Brushed aluminized steel construction
- Thermally protected, permanently lubricated motor
- Dynamically balanced 5 1/2" diameter blower wheel
- Neoprene resilient anti-vibration mounted
- Low RPM for very quiet performance
- Two VEN060I internal blowers can be mounted in the following hoods. This requires a dual wire harness (part #10220).
 - WSL and WCL hoods 48" or wider
 - WER 60" wide hoods
 - PSL 66" wide hoods

Ventilator Motor Ratings*

Hoods without Heat Lamps:

2.8 Amps @ 120 V AC, 60 Hz

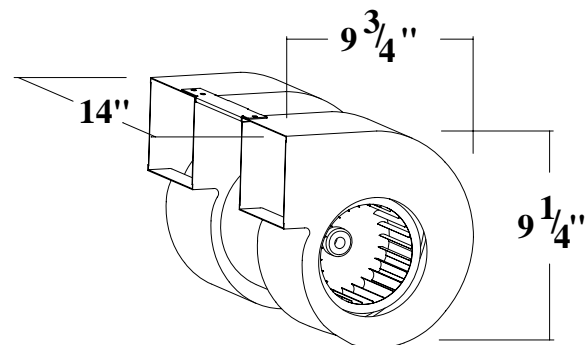
Hoods with Heat Lamps:

7.2 Amps @ 120 V AC, 60 Hz

*For maximum power supply required, refer to hood series selected.

Ventilator Carton Weight:

VEN060I = 23 lbs.

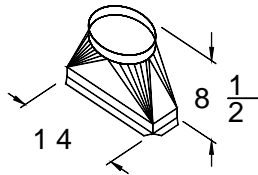


VEN060I



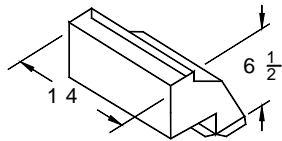
When installed in Wind Crest hoods

**Internally Mounted Ventilators – Install Quick Specs
Transitions Available**

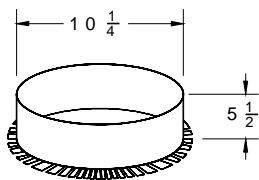


#10100 = 14" w X 4 1/4" d x 8 1/2" h
Rectangular to 8" Round duct

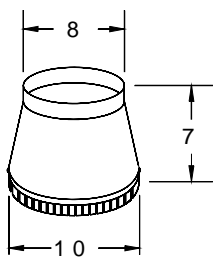
#10287 = 14" w X 4 1/4" d x 8 1/2" h
Rectangular to 10" Round duct



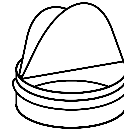
#10099 = 14 w x 4 1/4" d x 6 1/2" h
Rectangular transition



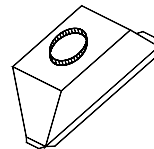
#10172 = 10" round Starting Collar



#10173 = 10" to 8" Round Adapter

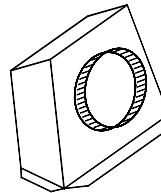


#10288 = 8" Round Back draft Damper
#10289 = 10" Round Back draft Damper



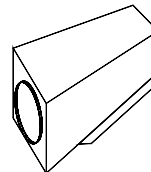
11 1/2" h x 32 3/4" w

#10542 = Plenum Transition to 10" round (use with dual Internal or Remote blower on 48" and larger WSL, WCL, WER60 or PSL66 hoods)



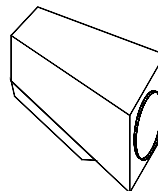
11 1/2" h x 14" w

#10377 = 10" Round Rear Discharge



11 1/2" h x 16" w

#10566 = 10" Round Left Side Discharge



11 1/2" h x 16" w

#10378 = 10" Round Right Side Discharge

Free Manuals Download Website

<http://myh66.com>

<http://usermanuals.us>

<http://www.somanuals.com>

<http://www.4manuals.cc>

<http://www.manual-lib.com>

<http://www.404manual.com>

<http://www.luxmanual.com>

<http://aubethermostatmanual.com>

Golf course search by state

<http://golfingnear.com>

Email search by domain

<http://emailbydomain.com>

Auto manuals search

<http://auto.somanuals.com>

TV manuals search

<http://tv.somanuals.com>