

WBT-200

USER'S MANUAL



Table of contents

Contents

Part 1	<u>Product introduction</u>	<u>2</u>
Part 2	<u>Features</u>	<u>3</u>
Part 3	<u>Safety notes</u>	<u>4</u>
Part 4	<u>Quick user guide</u>	<u>5</u>
Part 5	<u>Operation notes</u>	<u>7</u>
Part 6	<u>USB driver installation guide</u>	<u>9</u>
Part 7	<u>Using with PDA</u>	<u>17</u>
Part 8	<u>Trouble shooting</u>	<u>28</u>

Part 1 Product introduction

Overview



GPS LED: (Green LED)

- Green LED Solid light shows location fixing incomplete .Blink light shows location fixing completed.

Power LED: (Red LED)

- Red light blinks if battery power is low.
- Red light solid on while charging.
- After fully charged red light will snuff out.

Bluetooth LED:

- Light turns off when Blue tooth connection is off.
- Blue light solid on when Blue tooth connection initiates.
- Blue light blinks if Blue tooth connection succeeds.

- Temporarily press this to turn on/off Bluetooth.
- Press and hold this to turn power on/off.

Part 2 Features

WBT-200 is the GSP receiver with internal antenna. u-Nav + iTrax 03 used in its core is high-tech component and included function of auto-log record of journey, which are useful in navigation, security tracking purpose, map making and other agricultural needs. USB connector or Bluetooth interface ensures easy linking with other electronic devices .The GPS acquisition status, the last record of time and position can all be stored in unfailing memory. It has 12 GPS channels and its low power-consumption can last continuous 10 hours of operation. WBT-200 can boast of its smallest size ever with fullest features in the world.

- WBT-200 uses iTrax 03 GPS module (u-Nav base) and the high-performance CPU.
- Maximum 12 channels can be acquisitioned quickly.
- Internal decode "WAAS/EGNOS" is used excluding the need for external hardware in receiving WAAS/EGNOS signal(depend on firmware).
- System supports NMEA0183 3.0 for data transfer.
- Data-logging acts like the in-flight black box and can record of position, date and time as long as power source is maintained.
- For down-load of log-data and programming of WBT-200, provided software tool "G-Tool" can simplify usage.
- The system is upgradeable with new software which is provided free from us.
- It is designed to be water-proof.
- Data link thru bluetooth within 10 meter range.
- Versatile design aimed for car/personal navigation, fleet management, AVL, tracking and mapping purpose.

Part 3 Safety notes

- GPS (Global Positioning System) is provided by the United States government. Its accuracy may vary depending on special conditions (area at war or if it is blocked). Any control by USA will affect this system and its accuracy.
- If installed on the transportation device, driver must not operate this while driving.
- GPS performance is affected when satellite coverage is degraded as near a high-rise building, in the tunnel or under a cover.
- Personal replacement of components and re-structuring of this is prohibited and may result in loss of legal usage.
- Operation of this device is strictly prohibited in highly explosive environment such as mining, in-flight or other unauthorized area against use of this.
- Avoid exposing this at places of high temperature and humidity.
- Return to original dealer immediately if it emits strange smell or fume.

Part 4 Quick user guide

- Package :WBT-200(bluetooth GPS with logger)+USB cable+ sticker + car cigarette lighter power adapter , installation Disk, Quick use guide.
- WBT-200 Operation:
 - Temporarily press power button to turn it on. The bluetooth and GPS status LED will glow to confirm it is in GPS mode.
 - GPS LED glows green to show GPS acquisition is done (1 Hz). But if this LED is solid on, the GPS acquisition fails.
 - Temporarily press on power button. Bluetooth will turn off after bluetooth LED goes off. Another press on power button can turn bluetooth on after its LED glows again.
 - After power on, press and hold power button to turn the power off.
 - If Power LED (glows red) starts to blink, the power is low and needs recharging. Power LED (glows red) stays solid while charging .It snuff out red LED after it is fully charged.
- When the USB is used as interface:
 - USB driver must be installed first.
 - After connection to USB port of computer, place the WBT-200 at suitable area where it can best receive GPS signal for acquisitioning.
 - Power it (or switch its power on).
 - WBT-200 will start acquisition.
- When the bluetooth is used as interface:
 - Ahead of bluetooth connection, make sure the target device to pair can support bluetooth SPP master.
 - After pairing with WBT-200, place it at suitable area where it

can best receive GPS signal for acquisitioning.

- Activate the software of paired device. WTB 200 starts to provide GPS data.
- Battery charging:
 - Connect WBT-200 with USB cable and turn on power source.
 - To charge it, power source can be supplied from USB host that from computer, power adapter, or car cigarette lighter adapter.

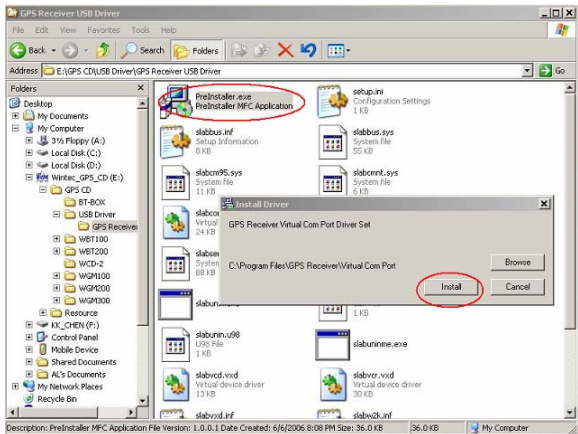
Part 5 Operation notes

- WBT-200 will do self-check once it is powered. Bluetooth and GPS start to work when both Bluetooth LED (glows blue) and GPS LED (glows green) turns on. GPS automatically starts acquisition and auto-logs. If sky is clear overhead, it requires only 40 sec for acquisition. (If the data in its memory is still valid, it needs only 8~35 sec). After acquisition, WBT-200 starts output data of position, speed and time in NMEA0183 format.
- For the first time if it is placed at the area well exposed to the satellite signal, this device requires approx 13 min (theoretically 12.5 min) to receive or update Almanac. Refer to trouble shooting guide when signal is not received well.
- If WBT-200 formatting the internal data is not correct, or if satellite data has been deleted, it takes longer time to position. But under the following conditions, it can take even longer time to do cold start.
 - If it is not in use for over 3 months (the almanac too old).
 - If the recorded data is over 500 km.
- After positioning, WBT-200 transfers navigation data thru export interface as below:
 - Latitude
 - Longitude
 - Altitude
 - Speed
 - Date
 - Time(UTC time)
 - Estimated error
 - Satellite status
 - Receiving status

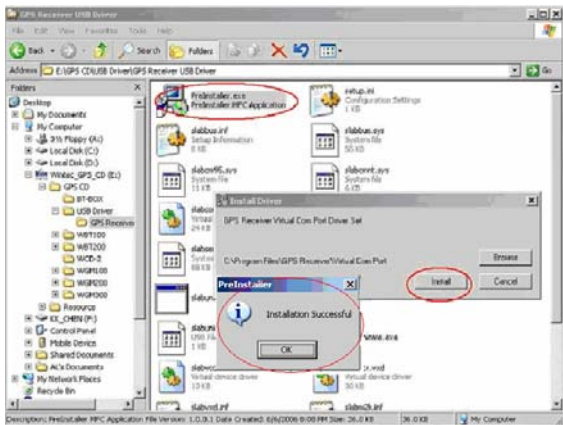
- After positioning, if auto-log function is activated, WBT-200 begins to auto-log the following way.
 - Maximum data up to 25360 Points (or more than).
 - Recording in a circular way.
 - Auto-logging goes on without the need of any device.
 - Log-data can be read out using the G-Tool software included.
 - Data can be read out thru USB or Bluetooth.
 - Data includes latitude, longitude, altitude and time in year-month-date-hour-min-sec.
 - After successful positioning, it wills automatically auto-log GPS data into its internal memory chip. It recorded in a rotational order. The earliest (oldest) data will replaced by the latest (newest) one when memory space is full (when data excesses 25360 maximum).
 - Auto-log will continue even the Bluetooth is switched off.
 - When auto-log function is disable. Its power will be off after 10 minutes while the Bluetooth is switched off. It will not shut down while auto-log function is activated.

Part 6 USB driver installation guide

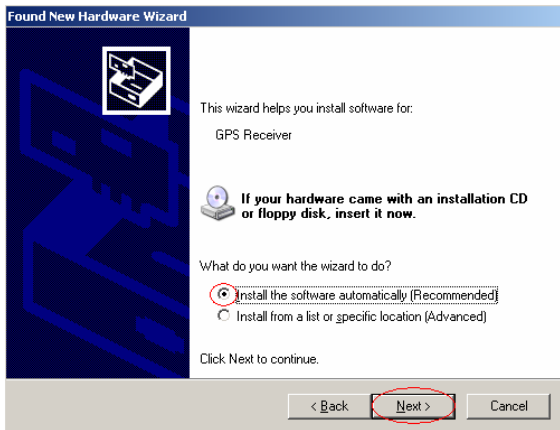
1、 Execute installation and click "Install".



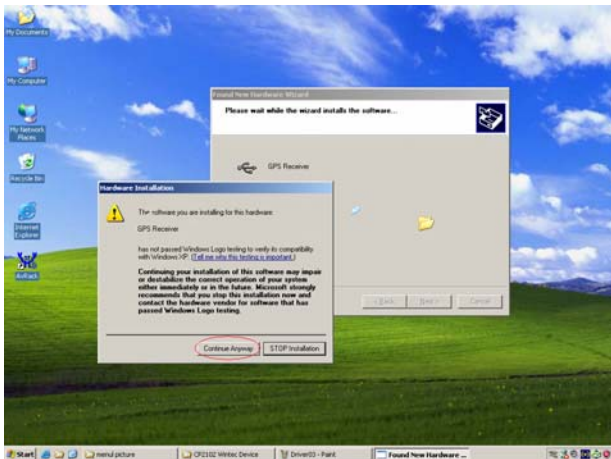
2、 Installation is done when this screen displays.



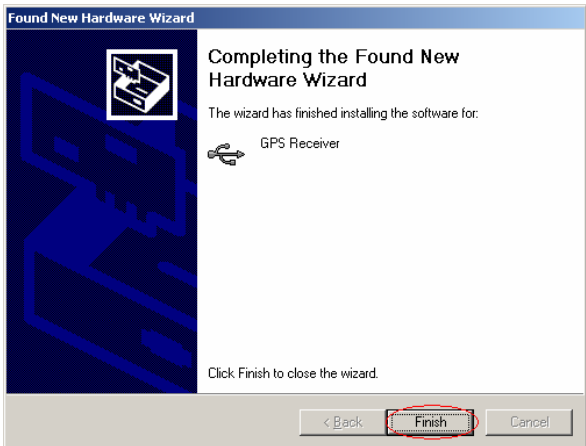
- 3、 Use USB cord to connect WBT-200 to the USB port of computer. Computer will automatically check it and seek driver software by itself. If PC asks for “device manager” for adding the new USB device following USB device connection, take the procedure below. Click “next”.



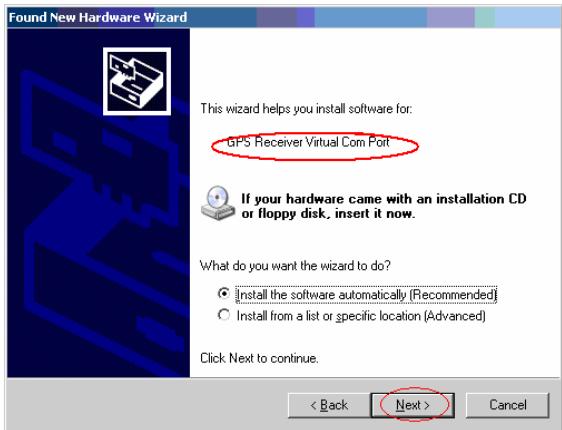
4 、 The screen will display as below. Click “continue anyway”.



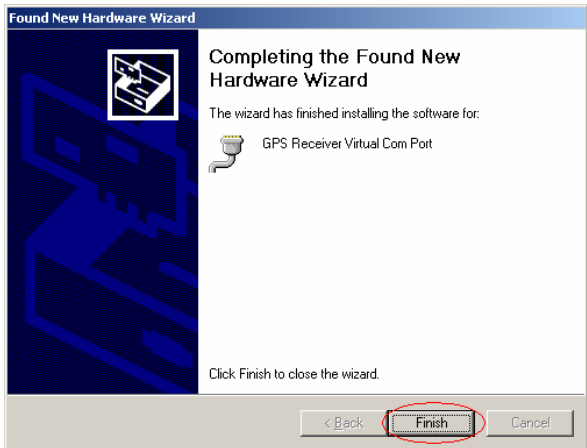
5、 Installation completed.



- 6、 Immediately afterwards, PC will ask again to install “GPS Receiver Virtual Com Port” driver. Click “ next ”.

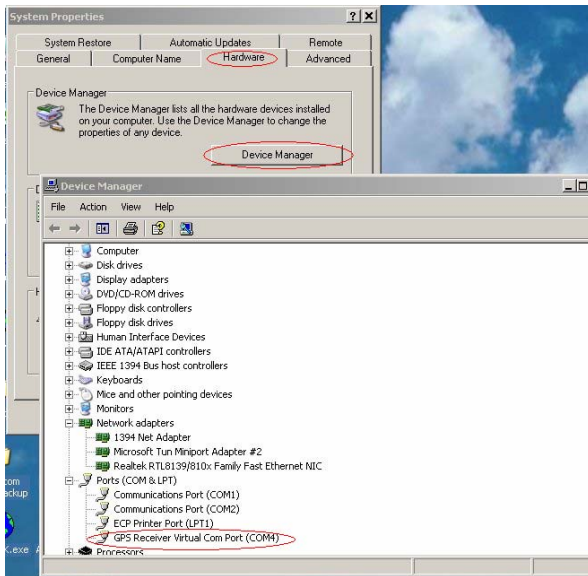


7、 Installation completed.



To check the installation status, go to the “device manager” .

- 8、 As in the illustration, the USB device (marked in red circle) is correctly installed to PC. The illustration also shows USB being transferred to Com Port assigned as COM4. In the future, whenever the USB device is connected to USB port on the computer, the COM 4 acts as the interface for data communication.



Part 7 Using with PDA

Use of this with PDA for location check.

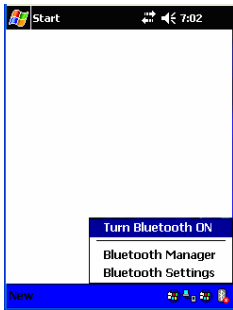
It is necessary to install GTOOL(PPC) first in your PDA. Follow the following steps.

Step 1 : Turn WBT-100 Bluetooth device Power on and then create Bluetooth connection with PDA.

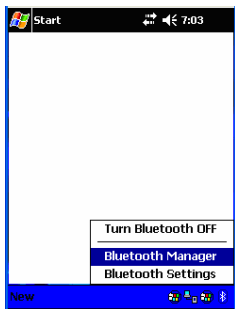
Step 2 : Supported by GTOOL(PPC), location can be viewed on PDA .

Step 1 : Bluetooth connection to PDA.

- 1、 Tap the Bluetooth icon on PDA's taskbar to view the Bluetooth menu.
Tap the " Turn Bluetooth ON" to enable Bluetooth.



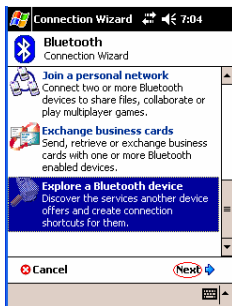
2. Tap the Bluetooth icon again and select the "Bluetooth Manager".



3. From Bluetooth Manager toolbar, tap "New" to search for any other Bluetooth devices in its vicinity.



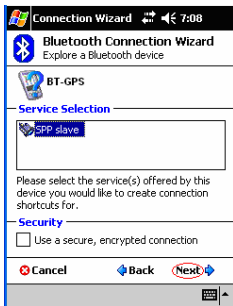
4. Tap “Explore a Bluetooth device” to view Bluetooth devices services and create a shortcut to them. Click “Next” to continue.



5. Tap “BT-GPS” icon to view the device services.



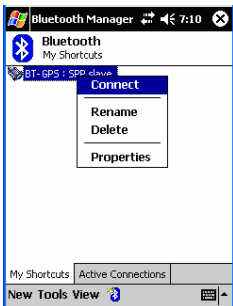
6. Select "SPP slave" services and tap "Next" to create a shortcut to it.



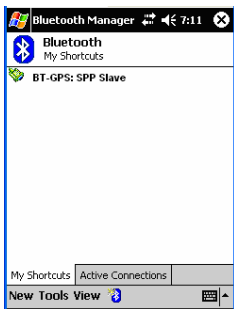
7. Tap "Finish" to complete procedure.



8. From the “My Shortcuts” tab, tap the “BT-GPS: SPP slave” icon and select the “Connect” option to connect to it.



9. When a connection is successfully established, the shortcut icon turns green.

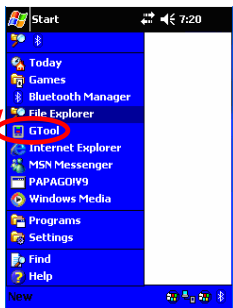


Step 2 : Using GTOOL(PPC) for locating .

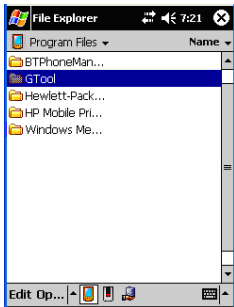
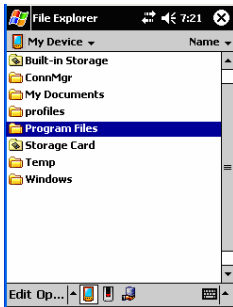
The GTOOL(PPC) enables you to view your position by latitude and longitude, speed, heading, and altitude. Make sure that the GTOOL(PPC) had been installed on your PDA as described in GPS CD.

1、 Tap“Start” and select the“ File Explorer ”item from the start menu.

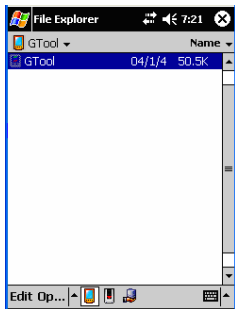
OR click the “GTool” item, then jump to step 4.



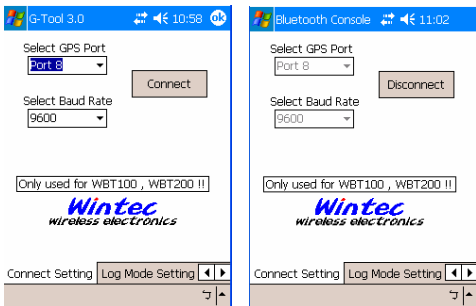
2. At “My Device” tab, tap the “Program Files”, then select “GTool” case.



3. In the “GTool” case, tap the GTool icon to start it.

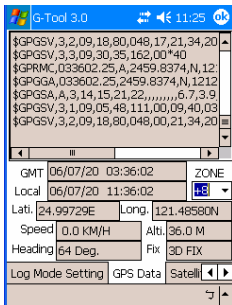


4. At “Connect Setting” tab, select Bluetooth com port on your PDA at “Select GPS Port” item and click Connect ,than select BT-GPS icon.



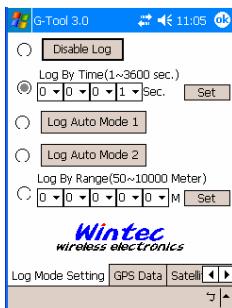
(Connect successfully)

5. In the “GPS Data” tab, location data is displayed as below.



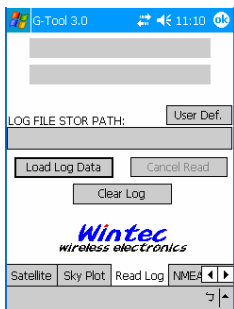
6. Feature in other tabs :

“Log Mode Setting ” : Log mode setting.

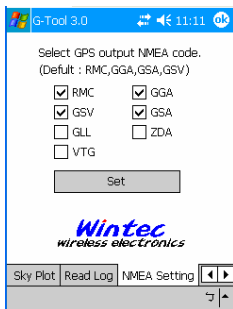


“Read Log” : Read or clean the Log data.

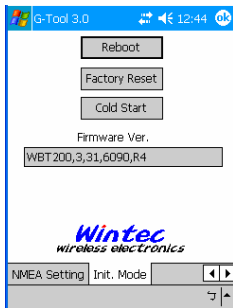
LOG File (*.tks) default path save as “...My Documents*.tks”.



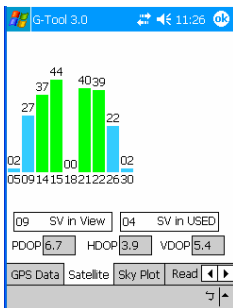
“NMEA Setting” : Set the NMEA output.



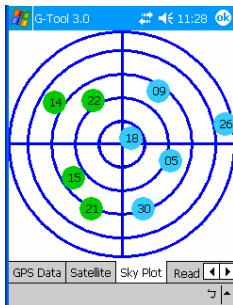
“Init. Mode”: Reboot, Factory Reset, Cold Start, and the firmware version.
(Note : If use these features, Bluetooth maybe need re-connect !)



“Satellite” : View Satellite Information.



“Sky Plot” : View Satellite Distribution in the sky.



Part 8 Trouble shooting

- The GPS signal will become weak under the following conditions.
- If the vehicle enters the tunnel. The GPS signal transmits linearly down to earth and its signal is blocked out in this situation.
- GPS satellite coverage gets poor because of high-rise building or thick forest. Even though WBT-200 can receive reflected weak GPS signal, the data might be less accurate.
- The sun shade in the vehicle can partially block out GPS signal and effect good reception. The GPS satellite is under control of USA and the accuracy might vary depending on some special purpose (as may be required by USA).
- It is a normal situation when GPS data displayed by the receiver device shows a big difference from real position because of unstable atmospheric condition which causes GPS axis to drift from actual map axis occasionally.
- Some navigation software can only decode latitude/longitude from NMEA0183 provided by logger. No altitude information is available and therefore it cannot define vehicle's position whether that is over or under the bridge.
- After successful positioning of WBT-200, if it is moved to another area of 500 km away it cannot be easily re-positioned. This is because the firstly recorded data (position, time and number of satellites acquisitioned) is different from the new area. It will need longer time for re-positioning.
- When the power LED flashes red, the battery is critically low and needs re-charging. If it is not recharged within 30 min, GPS will stop to work to prevent total exhaust of power.
- PIN code will be requested after Bluetooth connection initiates between GPS and PDA. Enter code as **0000**.
- Avoid placing 2 GPS devices too close during positioning.

- Bluetooth connection takes 5 seconds for self-check. Each time the device is switched on; it needs 5 seconds before connection.
- It is normal if the Bluetooth coverage might become short sometimes due to environmental interferences.
- USB driver must be installed first before connecting the device to the USB port of computer. Make sure of the right COM PORT being used.
- If disconnection between PDA and GPS is done in a abnormal way, PDA will halt. Try to disconnect Bluetooth connection in a standard method.
- If the WBT-200 is found to work abnormally because of wrong procedure, reset it by taking off the battery. It will have factory default without effecting pre-set program. At the factory default, GPS reception begins in a quick start mode and its position may take longer time.
- If WBT-200 is used for navigation but found unworkable after connection is done. Make sure the format of NMEA0183 that the software is used. Then use G-Tool to set it (Refer to the G-Tool operation guide).

Free Manuals Download Website

<http://myh66.com>

<http://usermanuals.us>

<http://www.somanuals.com>

<http://www.4manuals.cc>

<http://www.manual-lib.com>

<http://www.404manual.com>

<http://www.luxmanual.com>

<http://aubethermostatmanual.com>

Golf course search by state

<http://golfingnear.com>

Email search by domain

<http://emailbydomain.com>

Auto manuals search

<http://auto.somanuals.com>

TV manuals search

<http://tv.somanuals.com>