

WOODS STUMP GRINDER

SG100

MAN0155
(Rev. 2/16/2007)

WOODS®
Tested. Proven. Unbeatable.

OPERATOR'S MANUAL

TO THE DEALER:

Assembly and proper installation of this product is the responsibility of the Woods® dealer. Read manual instructions and safety rules. Make sure all items on the Dealer's Pre-Delivery and Delivery Check Lists in the Operator's Manual are completed before releasing equipment to the owner.

The dealer must complete the Product Registration included with the Operator's Manual. The customer must sign the registration which certifies that all Dealer Check List items have been completed. The dealer is to return the prepaid postage portion to Woods, give one copy to the customer, and retain one copy. **Failure to complete and return this card does not diminish customer's warranty rights.**

TO THE OWNER:

Read this manual before operating your Woods equipment. The information presented will prepare you to do a better and safer job. Keep this manual handy for ready reference. Require all operators to read this manual carefully and become acquainted with all adjustment and operating procedures before attempting to operate. Replacement manuals can be obtained from your dealer. To locate your nearest dealer, check the Dealer Locator at www.WoodsEquipment.com, or in the United States and Canada call 1-800-319-6637.

The equipment you have purchased has been carefully engineered and manufactured to provide dependable and satisfactory use. Like all mechanical products, it will require cleaning and upkeep. Lubricate the unit as specified. Observe all safety information in this manual and safety decals on the equipment.

For service, your authorized Woods dealer has trained mechanics, genuine Woods service parts, and the necessary tools and equipment to handle all your needs.

Use only genuine Woods service parts. Substitute parts will void the warranty and may not meet standards required for safe and satisfactory operation. Record the model number and serial number of your equipment in the spaces provided:

Model: _____ **Date of Purchase:** _____

Serial Number: (see Safety Decal section for location) _____

Provide this information to your dealer to obtain correct repair parts.

Throughout this manual, the term **IMPORTANT** is used to indicate that failure to observe can cause damage to equipment. The terms **CAUTION**, **WARNING**, and **DANGER** are used in conjunction with the Safety-Alert Symbol (a triangle with an exclamation mark) to indicate the degree of hazard for items of personal safety.



This Safety-Alert Symbol indicates a hazard and means **ATTENTION! BECOME ALERT! YOUR SAFETY IS INVOLVED!**



DANGER

Indicates an imminently hazardous situation that, if not avoided, will result in death or serious injury.



WARNING

Indicates a potentially hazardous situation that, if not avoided, could result in death or serious injury, and includes hazards that are exposed when guards are removed.



CAUTION

Indicates a potentially hazardous situation that, if not avoided, may result in minor or moderate injury.

**IMPORTANT
or NOTICE**

Indicates that failure to observe can cause damage to equipment.

NOTE

Indicates helpful information.

WOODS®

ALITEC™

BMP®

CENTRAL FABRICATORS®

GANNON®

GILL®

WAIN-ROY®

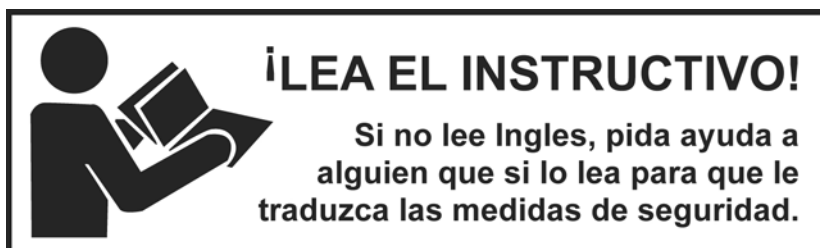
WOODS®

2 Introduction

Gen'1 (Rev. 2/5/2007)

TABLE OF CONTENTS

INTRODUCTION	2
SPECIFICATIONS	4
GENERAL INFORMATION	4
SAFETY RULES	5 - 7
SAFETY DECALS	8 - 9
OPERATION	10
OWNER SERVICE	14
DEALER SERVICE	16
DEALER CHECK LISTS	23
PARTS	
STUMP GRINDER ASSEMBLY	24
STUMP GRINDER PARTS LIST	25
GEARBOX ASSEMBLY AND PARTS LIST	26
DRIVELINE ASSEMBLY AND PARTS LIST	27
BOLT TORQUE CHART	28
BOLT SIZE CHART & ABBREVIATIONS	29
PARTS WARRANTY	30
PRODUCT WARRANTY	INSIDE BACK COVER



This Operator's Manual should be regarded as part of the machine. Suppliers of both new and second-hand machines must make sure that this manual is provided with the machine.

SG100 SPECIFICATIONS

Weight	1012 lbs.
Cutting wheel diameter	34 inches
Cutting wheel speed	895 rpm
Cutting arc	55 degrees
Hub torque	450 lbs-ft.
Required horsepower	35 to 100 HP
Cutting teeth25 carbide steel teeth
Maximum stump height	24 inches
Maximum cutting depth	12 inches

GENERAL INFORMATION

The purpose of this manual is to assist you in operating and maintaining your stump grinder. Read it carefully. It furnishes information and instructions that will help you achieve years of dependable performance. These instructions have been compiled from extensive field experience and engineering data. Some information may be general in nature due to unknown and varying operating conditions. However, through experience and these instructions, you should be able to develop procedures suitable to your particular situation.

The illustrations and data used in this manual were current at the time of printing but, due to possible inline production changes, your machine may vary slightly in detail. We reserve the right to redesign and change the machines as may be necessary without notification.

Throughout this manual, references are made to right and left directions. These are determined from the operator's position in the tractor seat.



SAFETY RULES



ATTENTION! BECOME ALERT! YOUR SAFETY IS INVOLVED!



Safety is a primary concern in the design and manufacture of our products. Unfortunately, our efforts to provide safe equipment can be wiped out by an operator's single careless act.

In addition to the design and configuration of equipment, hazard control and accident prevention are dependent upon the awareness, concern, judgement, and proper training of personnel involved in the operation, transport, maintenance, and storage of equipment.

It has been said, "The best safety device is an informed, careful operator." We ask you to be that kind of operator.

TRAINING

- **Safety instructions are important! Read all attachment and power unit manuals; follow all safety rules and safety decal information. (Replacement manuals and safety decals are available from your dealer. To locate your nearest dealer, check the Dealer Locator at www.WoodsEquipment.com, or in the United States and Canada call 1-800-319-6637.) Failure to follow instructions or safety rules can result in serious injury or death.**
- **If you do not understand any part of this manual and need assistance, see your dealer.**
- **Know your controls and how to stop engine and attachment quickly in an emergency.**
- **Operators must be instructed in and be capable of the safe operation of the equipment, its attachments, and all controls. Do not allow anyone to operate this equipment without proper instructions.**
- **Keep hands and body away from pressurized lines. Use paper or cardboard, not hands or other body parts to check for leaks. Wear safety goggles. Hydraulic fluid under pressure can easily penetrate skin and will cause serious injury or death.**
- **Make sure that all operating and service personnel know that if hydraulic fluid penetrates skin, it must be surgically removed as soon as possible by a doctor familiar with this form of injury or gangrene, serious injury, or death will result. CONTACT A PHYSICIAN IMMEDIATELY IF FLUID ENTERS SKIN OR EYES. DO NOT DELAY.**

PREPARATION

- **Check that all hardware is properly installed. Always tighten to torque chart specifications unless instructed otherwise in this manual.**
- **Always wear relatively tight and belted clothing to avoid getting caught in moving parts. Wear sturdy, rough-soled work shoes and protective equipment for eyes, hair, hands, hearing, and head; and respirator or filter mask where appropriate.**
- **Make sure attachment is properly secured, adjusted, and in good operating condition.**
- **Power unit must be equipped with ROPS or ROPS cab and seat belt. Keep seat belt securely fastened. Falling off power unit can result in death from being run over or crushed. Keep foldable ROPS system in "locked up" position at all times.**
- **Make sure all safety decals are installed. Replace if damaged. (See Safety Decals section for location.)**
- **Make sure shields and guards are properly installed and in good condition. Replace if damaged.**

OPERATION

- **Do not allow bystanders in the area when operating, attaching, removing, assembling, or servicing equipment.**
- **Consult local utilities before working. Know location of all underground cables, pipelines, overhead wires, and other hazards in working area and avoid contact.**
- **Do not put stump grinder into service unless all shields and guards are in place and in good condition. Replace if damaged.**
- **Keep bystanders away from equipment.**
- **Do not operate or transport equipment while under the influence of alcohol or drugs.**
- **Operate only in daylight or good artificial light.**

(Safety Rules continued on next page)

SAFETY RULES



ATTENTION! BECOME ALERT! YOUR SAFETY IS INVOLVED!



(Safety Rules continued from previous page)

- **Avoid contact with electrical wires.**
- **Keep hands, feet, hair, and clothing away from equipment while engine is running. Stay clear of all moving parts.**
- **Always comply with all state and local lighting and marking requirements.**
- **Never allow riders on power unit or attachment.**
- **Power unit must be equipped with ROPS or ROPS cab and seat belt. Keep seat belt securely fastened. Falling off power unit can result in death from being run over or crushed. Keep foldable ROPS system in “locked up” position at all times.**
- **Always sit in power unit seat when operating controls or starting engine. Securely fasten seat belt, place transmission in neutral, engage brake, and ensure all other controls are disengaged before starting power unit engine.**
- **Shift tractor transmission into park or neutral and set brakes before engaging PTO and grinding.**
- **Do not operate PTO during transport.**
- **Do not operate auxiliary hydraulics during transport.**
- **Look down and to the rear and make sure area is clear before operating in reverse.**
- **Use extreme care when working close to fences, ditches, other obstructions, or on hillsides.**
- **Do not operate or transport on steep slopes.**
- **Do not stop, start, or change directions suddenly on slopes.**
- **Use extreme care and reduce ground speed on slopes and rough terrain.**
- **Before performing any service or maintenance, lower equipment to ground or block securely, turn off engine, remove key, and disconnect driveline from tractor PTO.**
- **NEVER GO UNDERNEATH EQUIPMENT.** Never place any part of the body underneath equipment or between moveable parts even when the engine has been turned off. Hydraulic system leak-down, hydraulic system failures, mechanical failures, or movement of control levers can cause equipment to drop or rotate unexpectedly and cause severe injury or death.
 - **Service work does not require going underneath.**
 - **Read Operator's Manual for service instruc-**

tions or have service performed by a qualified dealer.

TRANSPORTATION

- **A minimum 20% of tractor and equipment weight must be on the tractor front wheels when attachments are in transport position. Without this weight, tractor could tip over, causing personal injury or death. The weight may be attained with a loader, front wheel weights, ballast in tires or front tractor weights. Weigh the tractor and equipment. Do not estimate.**
- **Reduce transport speed to avoid bouncing and brief loss of steering control.**
- **Always comply with all state and local lighting and marking requirements.**
- **Never allow riders on power unit or attachment.**
- **Turn off power to unit before transporting.**
- **Do not operate or transport on steep slopes.**
- **Do not operate or transport equipment while under the influence of alcohol or drugs.**

MAINTENANCE

- **Service and maintenance work not covered in OWNER SERVICE must be done by a qualified dealership. Special skills, tools, and safety procedures may be required. Failure to follow these instructions can result in serious injury or death.**
- **Before performing any service or maintenance, lower equipment to ground or block securely, turn off engine, remove key, and disconnect driveline from tractor PTO.**
- **Do not modify or alter or permit anyone else to modify or alter the equipment or any of its components in any way.**
- **Always wear relatively tight and belted clothing to avoid getting caught in moving parts. Wear sturdy, rough-soled work shoes and protective equipment for eyes, hair, hands, hearing, and head; and respirator or filter mask where appropriate.**
- **Do not allow bystanders in the area when operating, attaching, removing, assembling, or servicing equipment.**
- **Make sure attachment is properly secured, adjusted, and in good operating condition.**
- **Never perform service or maintenance with engine running.**

SAFETY RULES



ATTENTION! BECOME ALERT! YOUR SAFETY IS INVOLVED!



- Keep all persons away from operator control area while performing adjustments, service, or maintenance.

- Tighten all bolts, nuts, and screws to torque chart specifications. Check that all cotter pins are installed securely to ensure equipment is in a safe condition before putting unit into service.

- Make sure shields and guards are properly installed and in good condition. Replace if damaged.

- When lubricating telescoping PTO drives, keep fingers out of shield access slots to prevent injury.

STORAGE

- Block equipment securely for storage.

- Do not climb or lean on equipment stored on stand.

- Keep children and bystanders away from storage area.



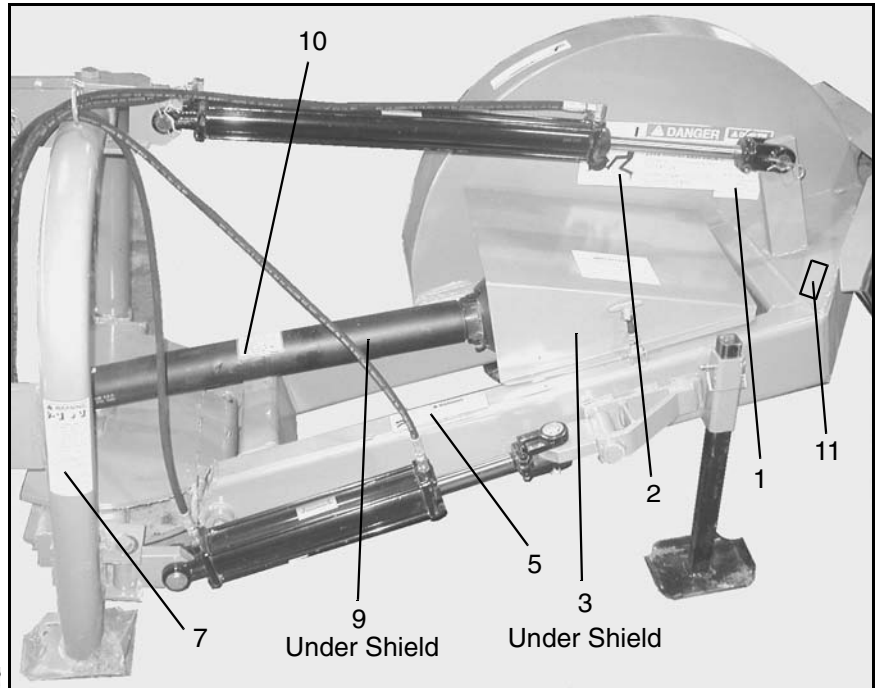
SAFETY & INSTRUCTIONAL DECALS



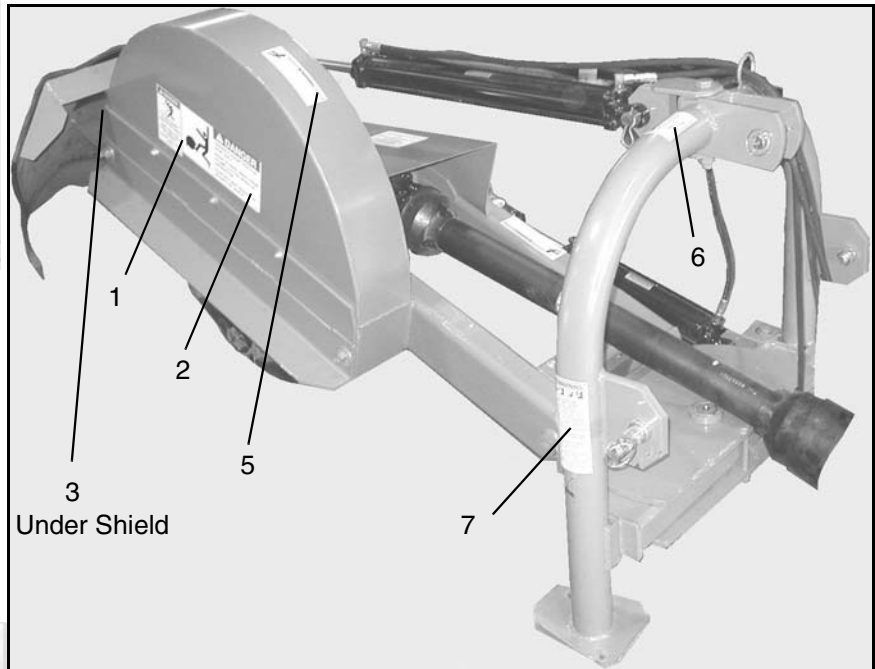
ATTENTION! BECOME ALERT! YOUR SAFETY IS INVOLVED!
Replace Immediately If Damaged!



1 - PN MS-503



2 - PN MS501-A



3 - PN MS-505



4 - PN MS-502-A
 Early Production Only



SAFETY & INSTRUCTIONAL DECALS



ATTENTION! BECOME ALERT! YOUR SAFETY IS INVOLVED!



Replace Immediately If Damaged!

5 - PN - MS-171

	WARNING
	<p>HIGH PRESSURE HYDRAULIC OIL LEAKS CAN PENETRATE SKIN</p> <ul style="list-style-type: none"> ■ CHECK FOR LEAKS WITH CARDBOARD; NEVER USE HAND. ■ BEFORE LOOSENING FITTINGS: LOWER LOAD, RELEASE PRESSURE, AND BE SURE OIL IS COOL. ■ CONSULT PHYSICIAN IMMEDIATELY IF SKIN PENETRATION OCCURS. <p>SKIN PENETRATION CAN RESULT IN SERIOUS INJURY AND GANGRENE.</p>

MS-171

6 - 18866

WARNING
<p>DO NOT EXCEED PTO SPEED OF 540 RPM</p>
<p>PTO speeds higher than 540 RPM can cause equipment failure and personal injury.</p>

18866-D

7 - PN 102941

WARNING
<p>CRUSHING AND PINCHING HAZARD</p>
<ul style="list-style-type: none"> ■ Be extremely careful handling various parts of the machine. They are heavy and hands, fingers, feet, and other body parts could be crushed or pinched between tractor and implement. ■ Operate tractor controls from tractor seat only. ■ Do not stand between tractor and implement when tractor is in gear. ■ Make sure parking brake is engaged before going between tractor and implement. ■ Stand clear of machine while in operation or when it is being raised or lowered. <p>FAILURE TO FOLLOW THESE INSTRUCTIONS COULD RESULT IN SERIOUS INJURY OR DEATH.</p>

1002941-A

9 - PN33347

DANGER
<p>GUARD MISSING. DO NOT OPERATE.</p>
DANGER
<p>GUARD MISSING. DO NOT OPERATE.</p>
DANGER

33347E

10 - PN 18864

DANGER
<p>ROTATING DRIVELINE CONTACT CAN CAUSE DEATH KEEP AWAY!</p>
<p>DO NOT OPERATE WITHOUT -</p>
<ul style="list-style-type: none"> ■ All driveline guards, tractor and equipment shields in place ■ Drivelines securely attached at both ends ■ Driveline guards that turn freely on driveline

18864-C

11 - Serial Number Plate

MODEL NO.	SERIAL NO.
<p>Woods Equipment Company Oregon, Illinois, U.S.A.</p>	

BE CAREFUL!

Use a clean, damp cloth to clean safety decals.

Avoid spraying too close to decals when using a pressure washer; high-pressure water can enter through very small scratches or under edges of decals causing them to peel or come off.

Replacement safety decals can be ordered free from your Woods dealer. To locate your nearest dealer, check the Dealer Locator at www.WoodsEquipment.com, or in the United States and Canada call 1-800-319-6637.

OPERATION

The operator is responsible for the safe operation of this stump grinder. The operator must be properly trained. Operators should be familiar with the tractor, stump grinder, and all safety practices before starting operation. Read the safety rules and safety decals on page 5 through page 9.

WARNING

- Do not allow bystanders in the area when operating, attaching, removing, assembling, or servicing equipment.

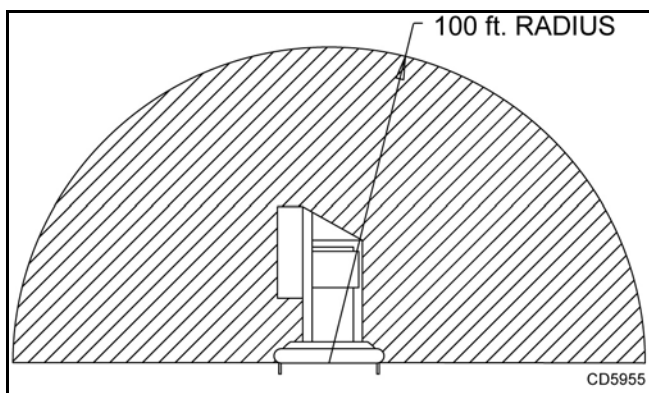


Figure 1. 100 ft. Hazard Zone

- Keep bystanders away from equipment.
- Keep hands and body away from pressurized lines. Use paper or cardboard, not hands or other body parts to check for leaks. Wear safety goggles. Hydraulic fluid under pressure can easily penetrate skin and will cause serious injury or death.
- Make sure that all operating and service personnel know that if hydraulic fluid penetrates skin, it must be surgically removed as soon as possible by a doctor familiar with this form of injury or gangrene, serious injury, or death will result. CONTACT A PHYSICIAN IMMEDIATELY IF FLUID ENTERS SKIN OR EYES. DO NOT DELAY.
- Make sure spring-activated locking pin or collar slides freely and is seated firmly in tractor PTO spline groove.
- Know your controls and how to stop engine and attachment quickly in an emergency.
- Operators must be instructed in and be capable of the safe operation of the equipment, its attachments, and all controls. Do not allow anyone to operate this equipment without proper instructions.
- Never allow children or untrained persons to operate equipment.

CAUTION

- Always wear relatively tight and belted clothing to avoid getting caught in moving parts. Wear sturdy, rough-soled work shoes and protective equipment for eyes, hair, hands, hearing, and head; and respirator or filter mask where appropriate.

TRACTOR STABILITY

WARNING

- A minimum 20% of tractor and equipment weight must be on the tractor front wheels when attachments are in transport position. Without this weight, tractor could tip over, causing personal injury or death. The weight may be attained with a loader, front wheel weights, ballast in tires or front tractor weights. Weigh the tractor and equipment. Do not estimate.

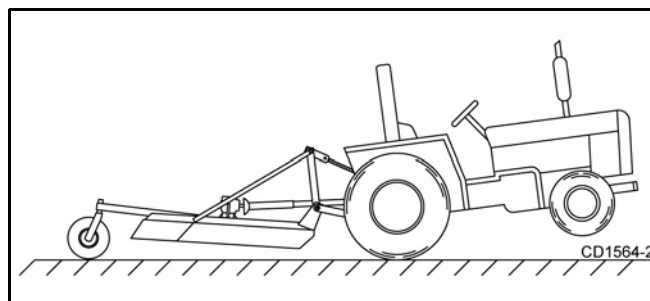


Figure 2. Tractor Stability

STUMP GRINDER PRE-OPERATION

NOTE: For operation of this stump grinder, references to right, left, forward, and rearward directions are determined from the operator's position in the tractor seat.

NOTICE

- Gearbox does not contain oil. Fill before operating.
 1. Fill gearbox with 6 pints of SAE 90 oil.
 2. Grease both fittings on the swivel assembly as shown in Figure 4.
 3. Grease U-joints on end of driveline as shown.

4. Grease slip joint on driveline.

NOTE: Check gearbox oil level daily after initial start up.

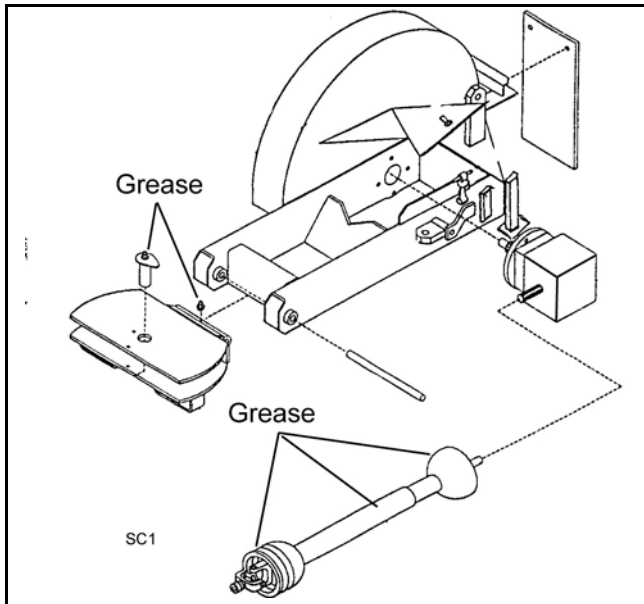


Figure 3. Lubrication Points

INSTALL 3-POINT PINS

NOTE: Stump grinder includes Category 1 and Category 2 hitch pins. Install hitch pins as instructed.

Category 1 Hitch Pin

Install hitch pin on the **inside** of 3-point attachment bracket as shown in Figure 4. Secure with lock washer and hex nut.

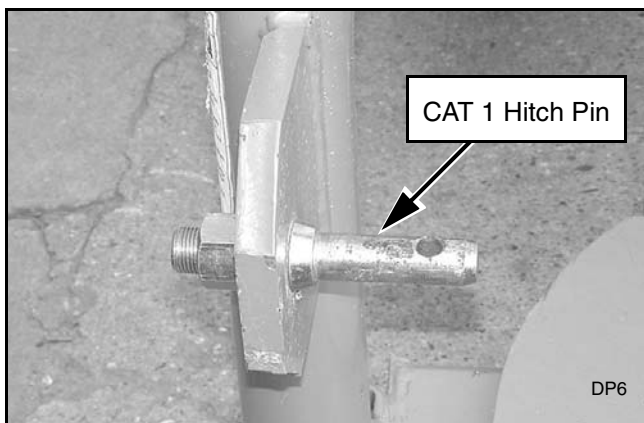


Figure 4. Category 1 Hitch Pin Installed (Right Side)

Category 2 Hitch Pin

Install hitch pin on the **outside** of 3-point attachment bracket as shown in Figure 5. Secure with lock washer and hex nut.

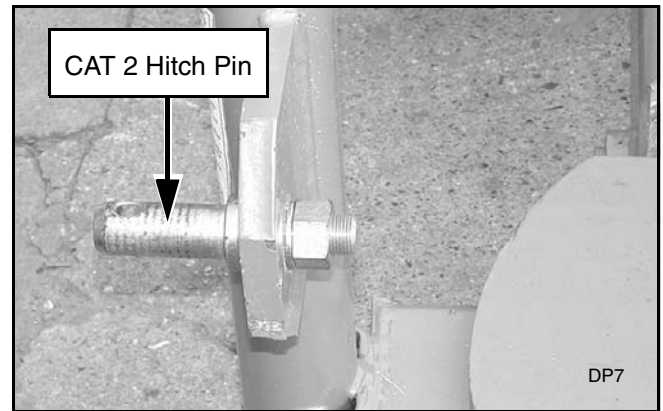


Figure 5. Category 2 Hitch Pin Installed (Right Side)

ATTACH STUMP GRINDER TO TRACTOR

NOTICE

■ Top cylinder must be completely raised to avoid driveline damage before raising 3-point lower lift arms.



Figure 6. Stump Grinder Attached to Tractor (Category 1 Hitch Pins Shown)

1. Attach stump grinder hitch pins to tractor 3-point lower lift arm and secure.
2. Attach tractor top link to stump grinder clevis and secure with tractor top link pin.
3. Connect driveline to tractor PTO shaft.
4. Slide slip collar back or push slip pin in to make connection.
5. Make sure connection is secure. Slip collar or slip pin should snap back into original position.
6. Adjust the tractor 3-point arm anti-sway devices to prevent stump grinder from swaying side-to-side during transport.
7. Adjust tractor drawbar so that it will not interfere with stump grinder or driveline.

8. Attach quick couplers to tractor hydraulic source.
9. Place jack stand in storage position.

OPERATING TECHNIQUE

1. Power for operating the stump grinder is supplied by the tractor PTO. Know how to stop the tractor and stump grinder quickly in an emergency.
2. Position stump grinder above stump to be removed. Engage PTO at low engine rpm to minimize stress on the drive system and gearbox. With PTO engaged, increase PTO speed to 540 rpm and maintain throughout grinding operation.
3. Lower tractor 3-point arm until pads on stump grinder are firmly on the ground.
4. Activate top cylinder to lower the cutting wheel onto the stump to desired depth.

NOTE: The amount of material removed may vary depending on tractor size and hardness of wood.

5. Start cutting wheel on left edge of stump and slowly activate side cylinder to begin grinding. Cutting wheel can pivot 55-degrees from side to side.
6. With pass across stump completed, activate side cylinder to the left, lower top cylinder to remove more material, and activate side cylinder to the right. Continue this process until stump is removed.

NOTE: If stump is too large to remove in one pass, reposition tractor and start operating procedures over.

NOTICE

■ **Top cylinder must be completely raised to avoid driveline damage before raising 3-point lower lift arms.**

When finished grinding stump, disengage PTO, raise top cylinder, and raise stump grinder off the ground with the 3-point lower lift arms.

STORE STUMP GRINDER

1. Raise stump grinder with 3-point lower lift arms.
2. Remove lynch pin from jack stand.
3. Lower jack stand and align top hole in jack stand tube with hole in jack stand support bracket.
4. Insert lynch pin to secure jack stand into position.
5. Lower stump grinder with 3-point lower lift arms to the ground and top cylinder until all three pads are securely on the ground.

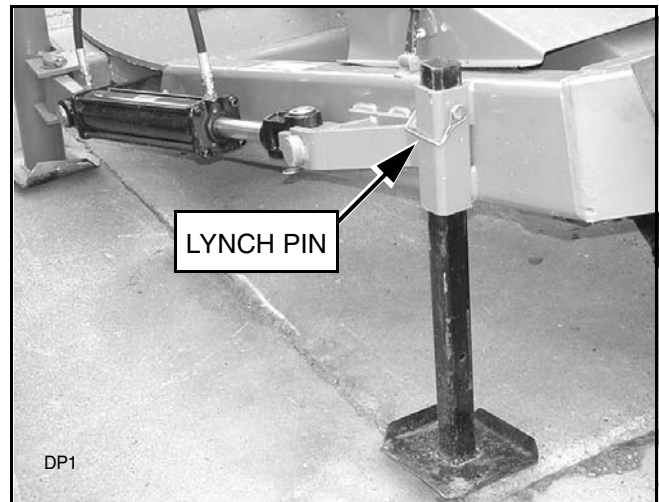


Figure 7. Stump Grinder in Storage Position

CLEANING

After Each Use

- Remove large debris such as clumps of dirt, grass, crop residue, etc. from machine.
- Inspect machine and replace worn or damaged parts.
- Replace any safety decals that are missing or not readable.

Periodically or Before Extended Storage

- Clean large debris such as clumps of dirt, grass, crop residue, etc. from machine.
- Remove the remainder using a low-pressure water spray.
 1. Be careful when spraying near scratched or torn safety decals or near edges of decals as water spray can peel decal off surface.
 2. Be careful when spraying near chipped or scratched paint as water spray can lift paint.
 3. If a pressure washer is used, follow the advice of the pressure washer manufacturer.
- Inspect machine and replace worn or damaged parts.
- Sand down scratches and the edges of areas of missing paint and coat with Woods spray paint of matching color (purchase from your Woods dealer).
- Replace any safety decals that are missing or not readable (supplied free by your Woods dealer). See Safety Decals section for location drawing.

PRE-OPERATION CHECK LIST (OWNER'S RESPONSIBILITY)

- ___ Review and follow all safety rules and safety decal instructions on pages 3 through 7.
- ___ Check that all safety decals are installed and in good condition. Replace if damaged.
- ___ Check to make sure all shields and guards are properly installed and in good condition. Be sure that either the discharge shield or complete vacuum attachment is installed.
- ___ Check that all hardware and cotter pins are properly installed and secured.
- ___ Check that equipment is properly and securely attached to tractor.
- ___ Inspect area and remove stones, branches or other hard objects that might be thrown, causing injury or damage.
- ___ Check all lubrication points and grease as instructed in Tractor Stability, page 10.
- ___ Make sure driveline spring-activated locking pin or collar slides freely and is seated firmly in tractor PTO spline groove and in gearbox spline groove.
- ___ Do not allow riders.
- ___ Consult local utilities before digging. Know location of and avoid contacting all underground cables, pipelines, overhead wires and other hazards in digging area.
- ___ Check condition of stump grinder teeth before operation.



OWNER SERVICE

The information in this section is written for operators who possess basic mechanical skills. If you need help, your dealer has trained service technicians available. For your protection, read and follow the safety information in this manual.

WARNING

■ **Keep hands and body away from pressurized lines. Use paper or cardboard, not hands or other body parts to check for leaks. Wear safety goggles. Hydraulic fluid under pressure can easily penetrate skin and will cause serious injury or death.**

■ **Make sure that all operating and service personnel know that if hydraulic fluid penetrates skin, it must be surgically removed as soon as possible by a doctor familiar with this form of injury or gangrene, serious injury, or death will result. CONTACT A PHYSICIAN IMMEDIATELY IF FLUID ENTERS SKIN OR EYES. DO NOT DELAY.**

■ **Do not allow bystanders in the area when operating, attaching, removing, assembling, or servicing equipment.**

■ **Before performing any service or maintenance, lower equipment to ground or block securely, turn off engine, remove key, and disconnect driveline from tractor PTO.**

■ **Never perform service or maintenance with engine running.**

■ **Keep all persons away from operator control area while performing adjustments, service, or maintenance.**

CAUTION

■ **If you do not understand any part of this manual and need assistance, see your dealer.**

LUBRICATION INFORMATION

1. Do not let excess grease collect on or around parts, particularly when operating in sandy areas.
2. Use a lithium grease of #2 consistency with a MOLY (molybdenum disulfide) additive for all locations unless otherwise noted.

NOTE: Be sure to clean fittings thoroughly before attaching grease gun. One good pump of most guns is sufficient when the lubrication schedule is followed.

3. Grease stump grinder pivot points every 8 hours.

Gearbox Lubrication

For gearbox, use a high quality oil with a viscosity index of 80W or 90W and an API service rating of GL-4 or -5 in gearboxes.

Fill gearbox with 6 pints of oil.

Driveline Lubrication

1. Lubricate the driveline slip joint every eight operating hours. Failure to maintain proper lubrication could result in damage to the U-joints, gearbox, and driveline.
2. Lower stump grinder to ground, disconnect driveline from tractor PTO shaft, and slide halves apart but do not disconnect from each other.
3. Apply a bead of grease completely around male half where it meets female half. Slide drive halves over each other several times to distribute grease.

REPLACE GRINDER TEETH

NOTE: Replace teeth whenever they become damaged, broken, or excessively worn. Excessively worn cutting edges greatly decrease cutting efficiency.

NOTICE

■ **Never operate the stump grinder with missing teeth.**

1. Remove hex nut from tooth.
2. Remove tooth.
3. Insert new tooth and secure with hex nut.
4. Torque nut to 170 lbs-ft.



Figure 8. Tooth Installed

ADJUSTING SLIP CLUTCH

The slip clutch is designed to slip so that the gearbox and driveline are protected if the cutter strikes an obstruction.

A new slip clutch or one that has been in storage over the winter may seize. Before operating the grinder, make sure it will slip by performing the following operation:

1. Turn off tractor engine and remove key.
2. Remove driveline from tractor PTO.
3. Loosen eight 10 mm cap screws (23) to remove all tension from pressure plate (22).

4. Hold clutch support (19) solid and turn shaft to make sure clutch slips.
5. If clutch does not slip freely, disassemble and clean the inner clutch plate faces (21), flange yoke (17), and clutch support (19).
6. Reassemble clutch.
7. Tighten springs (16) until they are compressed to the 1.31 inches shown in Figure 9.
8. If a clutch continues to slip when the springs are compressed to the 1.31 inch dimension, check friction discs (18) for excessive wear. Discs are 1/8" when new. Replace discs after 1/16" wear. Minimum disc thickness is 1/16".

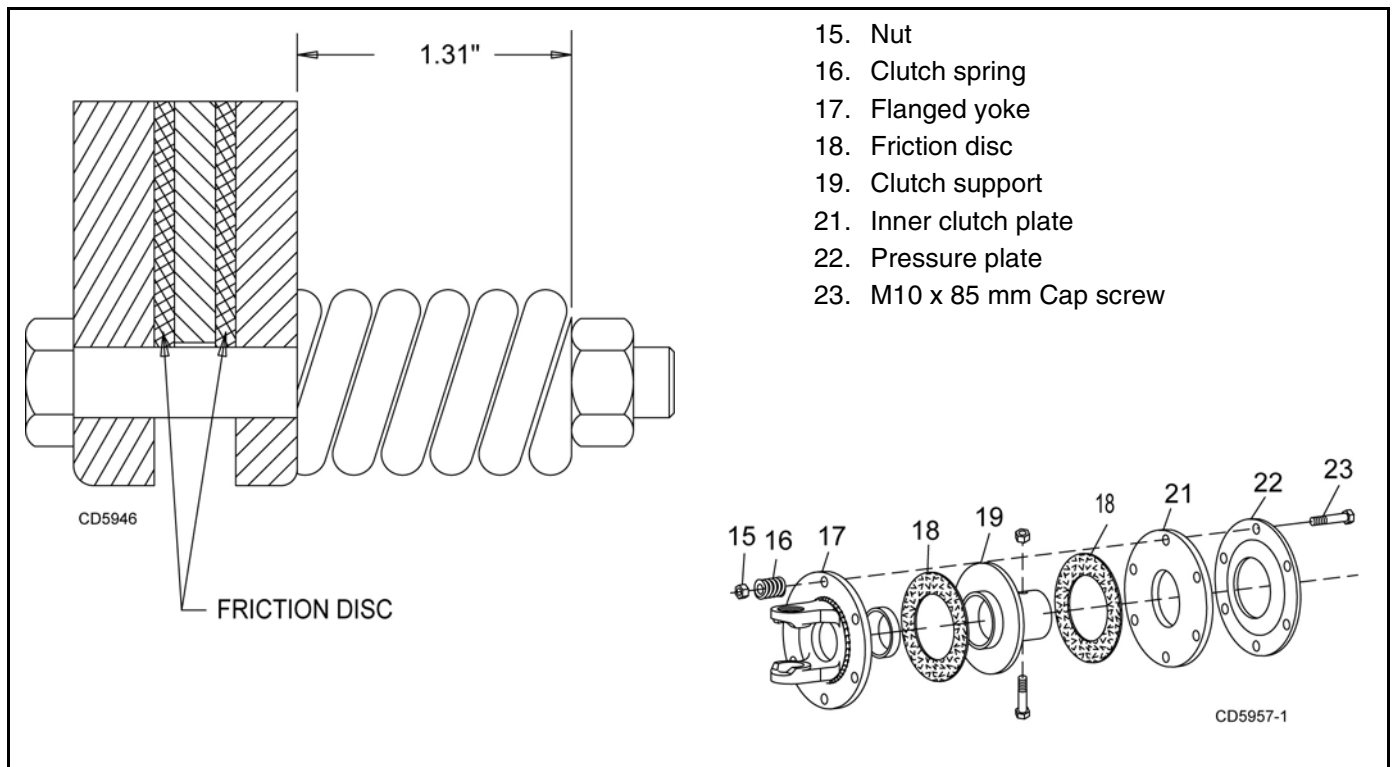


Figure 9. Slip Clutch Assembly

DEALER SERVICE

The information in this section is written for dealer service personnel. The repair described here requires special skills and tools. If your shop is not properly equipped or your mechanics are not properly trained in this type of repair, you may be time and money ahead to replace complete assemblies.

! WARNING

■ Keep hands and body away from pressurized lines. Use paper or cardboard, not hands or other body parts to check for leaks. Wear safety goggles. Hydraulic fluid under pressure can easily penetrate skin and will cause serious injury or death.

■ Make sure that all operating and service personnel know that if hydraulic fluid penetrates skin, it must be surgically removed as soon as possible by a doctor familiar with this form of injury or gangrene, serious injury, or death will result. CONTACT A PHYSICIAN IMMEDIATELY IF FLUID ENTERS SKIN OR EYES. DO NOT DELAY.

■ Never perform service or maintenance with engine running.

■ Keep all persons away from operator control area while performing adjustments, service, or maintenance.

! CAUTION

■ Check that all hardware is properly installed. Always tighten to torque chart specifications unless instructed otherwise in this manual.

■ Always wear relatively tight and belted clothing to avoid entanglement in moving parts. Wear sturdy, rough-soled work shoes and protective equipment for eyes, hair, hands, hearing, and head.

GEARBOX MAINTENANCE

NOTE: Read this entire section before starting any repair. Many steps are dependent on each other.

Fill gearbox with 6 pints of SAE 80W or 90W gear lube.

NOTE: Repair to this gearbox is limited to replacing bearings, seals, and gaskets. Replacing gears, shafts, and a housing is not cost effective. Purchasing a complete gearbox is more economical.

Inspect gearbox for leakage and bad bearings. Leakage is a very serious problem and must be corrected immediately.

Bearing failure is indicated by excessive noise and side-to-side or end-play in gear shafts.

Remove Hub

1. Position stump grinder on a hard level surface with foot pads and jack stand firmly on the ground.
2. Remove hardware and side shield from the right side of the cutter frame.
3. Remove hardware and cutting wheel from hub.
4. Remove cotter pin (23) and slotted hex nut (14) from end of horizontal gearbox shaft.
5. Remove hub.

NOTE: You will need to use a heavy duty puller to remove tapered hub from gearbox shaft.

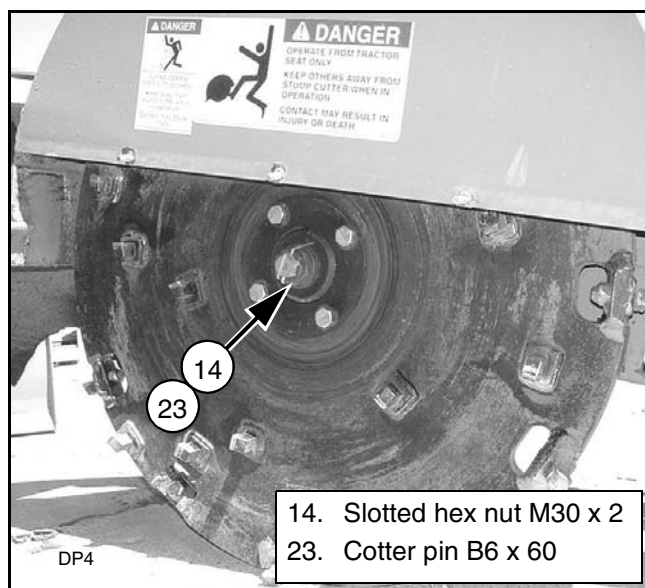


Figure 10. Cutting Wheel and Hub Assembly (Side Shield Removed)

Remove Gearbox from Stump Grinder

1. Disconnect and remove the driveline from the tractor.
2. Remove safety pin and clevis pin from top cylinder mount.
3. Rotate top cylinder out of work area.
4. Disconnect and remove the driveline from the gearbox.
5. Remove vent plug and siphon gear lube from housing through this opening.
6. Remove the four bolts that attach gearbox to stump grinder.
7. Remove gearbox.

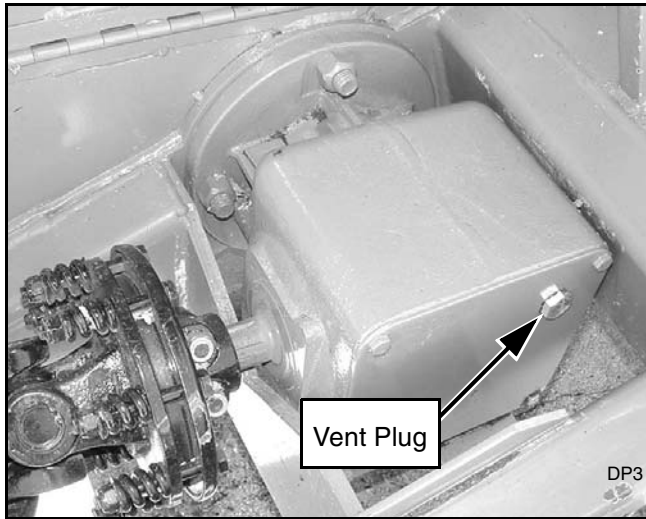


Figure 11. Gearbox and Driveline

Seal Replacement (Figure 12)

Recommended sealant for gearbox repair is Permatex® Aviation 3D Form-A-Gasket or equivalent

Leakage can occur at the input or output gaskets and shaft seals.

Seal Installation

NOTE: Proper seal installation is important. An improperly installed seal will leak.

1. Clean area in housing where seal outer diameter (OD) seats. Apply a thin coat of Permatex®.
2. Inspect area of shaft where seal seats. Remove any burrs or nicks with an emery cloth.
3. Lubricate gear shaft and seal lips.
4. Place seal squarely on housing, spring-loaded lip toward housing. Select a piece of pipe or tubing with an OD that will sit on the outside edge of the seal but will clear the housing. Tubing with an OD that is too small will bow seal cage and ruin seal.

Carefully press seal into housing, avoiding distortion to the metal seal cage.

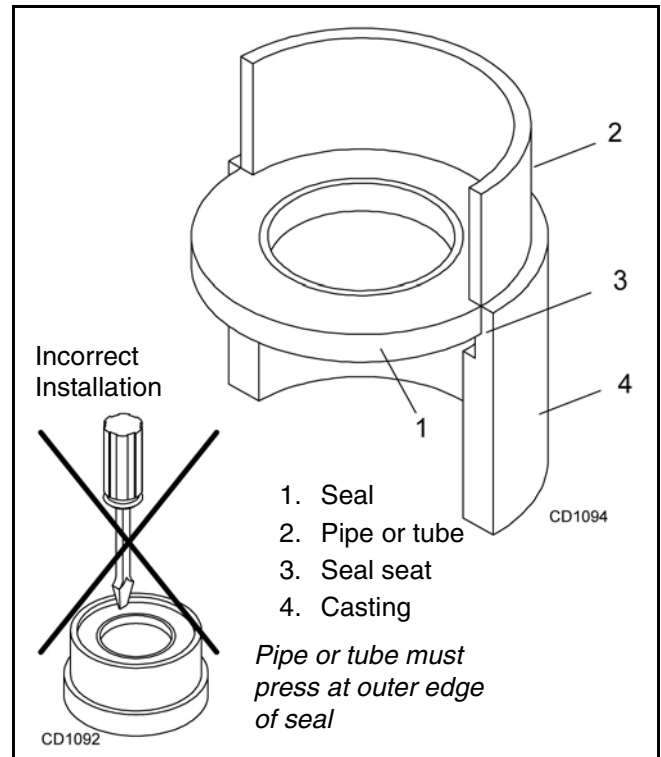


Figure 12. Seal Installation

Output Shaft Repair

Refer to **Figure 13**.

1. Disconnect and remove the rear driveline from the gearbox.
2. Remove vent plug (21) and siphon gear lube from housing through this opening.
3. Remove cutting wheel (see Remove Hub, page 16).
4. Remove cutting wheel shaft seal (17). Replace with new seal (see Seal Installation, page 17).

This seal should be recessed in housing. Front seal should be pressed flush with outside of housing.

NOTE: Distortion to seal cage or damage to seal lip will cause seal to leak.

5. Fill gearbox with SAE 80W or 90W gear lube until it runs out the level plug.
6. Remove and replace any seal damaged in installation.

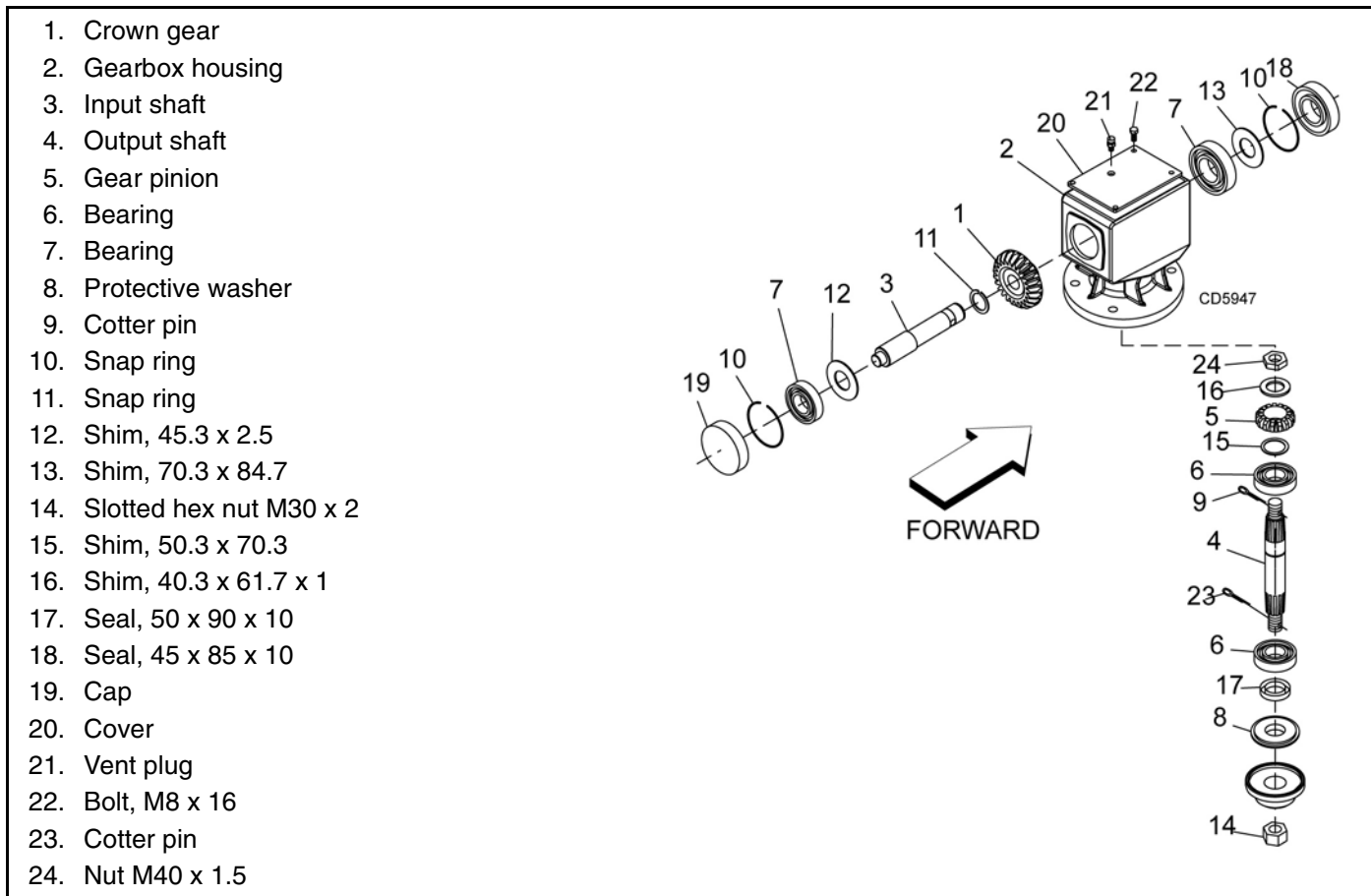


Figure 13. Gearbox Disassembly

Input Leak Repair

Refer to **Figure 13**.

1. Disconnect and remove the rear driveline from the gearbox.
2. Remove vent plug (21) and siphon gear lube from housing through this opening.
3. If the leak occurred at either end of input shaft, remove oil cap (19) and/or oil seal (18). Replace with new one (refer to Seal Installation, page 17).
4. Fill gearbox with SAE 80W or 90W gear lube until it runs out the level plug.

Gearbox Disassembly

Refer to Figure 13.

1. Remove gearbox from stump grinder (see Remove Gearbox from Stump Grinder, page 16).
2. Remove 3/8" plug from side of gearbox and pour out gear oil.
3. Remove oil cap (19) (to be replaced).
4. Remove snap ring (10) from input shaft (3).

5. Support gearbox in hand press and push on input shaft (3) to remove bearing (7) and shim (12).
6. Remove top cover (20) from housing. Remove gear (1) from inside housing.
7. Remove oil seal (18) from front of housing (to be replaced).
8. Remove snap ring (10) and shim (13) from front of housing (2).
9. Remove front bearing (7) by using a punch and hammer from outside of housing.
10. Support housing in vise in a horizontal position.

NOTE: The hex nut (14), cotter pin (23), and hub are already removed with the stump grinder wheel.
11. Remove seal (17).
12. Remove cotter pin (9), nut (24), and shim (16) from output shaft (4).
13. Remove output shaft (4) by using a punch and hammer and tapping on top to drive downward.
14. Remove gear (5) and shim (15) from inside housing.

15. Remove bottom bearing (6) by using a punch and hammer from the top, outside the housing. Support housing upside down (top cover surface) and remove second bearing (6) by using a punch and hammer from the bottom side of the housing.
16. Inspect gears for broken teeth and wear. Some wear is normal and will show on loaded side. Forged gear surfaces are rough when new. Check that wear pattern is smooth.
17. Inspect vertical and horizontal shafts for grooves, nicks, or bumps in the areas where the seals seat. Resurface any damage with emery cloth.
18. Inspect housing and caps for cracks or other damage.

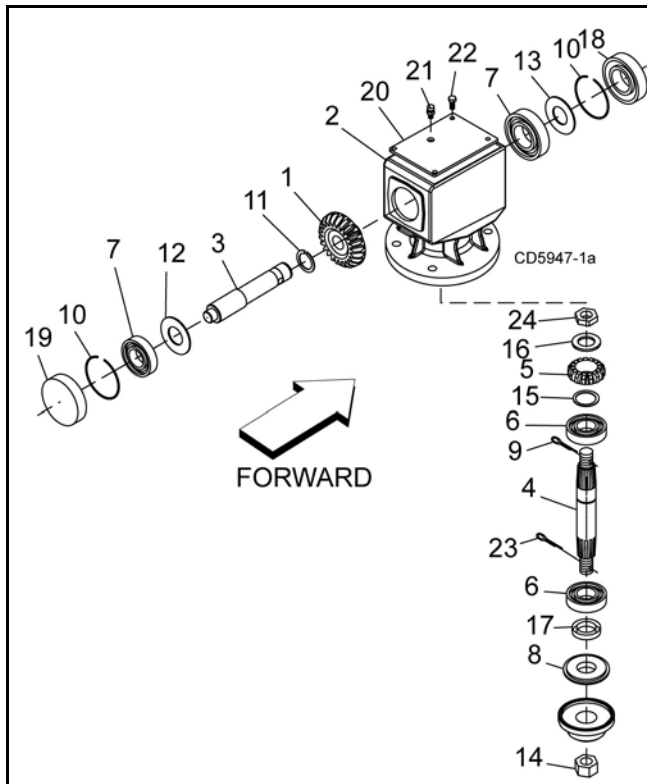


Figure 14. Gearbox Assembly

Gearbox Assembly

Refer to **Figure 14**.

NOTE: Repair to this gearbox is limited to replacing bearings, seals, and gaskets. Replacing gears, shafts, and a housing is not cost effective. Purchasing a complete gearbox is more economical.

1. Clean housing, paying specific attention to areas where gaskets will be installed.
2. Wash housing and all components thoroughly. Select a clean area for gearbox assembly. Replace all seals, bearings, and gaskets. All parts must be clean and lightly oiled before reassembling.

3. Insert output bearings (6) in the housing, using a round tube of the correct diameter and a hand press.
4. Slide output shaft (4) through both bearings (6) until it rests against top bearing (6).
5. Slide shim (15) over output shaft (4).
6. Press gear (5) onto output shaft (4) and secure with washer (16), nut (24), and cotter pin (9).
7. Apply grease to lower seal lips (17) and press seal (17) over output shaft (4), using a tube of the correct diameter. Be sure not to damage the seal lip.
Press in housing so that seal is recessed. Insert protective washer (8) by hand.

8. Press rear bearing (7) into the housing, using a round tube of the correct diameter and a hand press. Secure with snap ring (10).
9. Secure snap ring (11) on input shaft (3) if not already secure.
10. Place gear (1) through top of housing and align gear (1) and gear (5) so that gear teeth are a match.
11. While holding gear (1) in place, slide input shaft (3) through gear (1) and bearing (7). Align splines on shaft (3) and gear (1).
12. Slide shim (12) over input shaft (3) and secure with snap ring (10).
13. Check input shaft end float by moving the input shaft (3) by hand. If end float is higher than 0.012", insert shim between input shaft (3) and rear bearing (8). Repeat until end float is less than 0.012". Check rotational torque by hand. The torque should be less than 2.2 lbs-inch.
14. Check that the gear backlash is between 0.006" and 0.016". You should not have to adjust the backlash.
15. Press in input oil seal (18), using tube of correct diameter. Be careful not to damage seal lip.
16. Slide shim (13) over input shaft (3) and secure with snap ring (10).
17. Press oil cap (23) on to cover the rear of housing, using a tube of the correct diameter.
18. Install cover (20).
19. Check gearbox housing for leaks by plugging all holes except one. Apply 4 psi compressed air and immerse the gearbox in water to verify that there are no leaks.
20. Remove gearbox from water and dry off with compressed air.

21. Install gearbox into stump grinder. Reverse steps in Remove Gearbox from Stump Grinder, page 16 to install gearbox.
22. Add 6 pints of SAE 80W or 90W EP oil.
23. Install vent plug.

Gearbox Hub Installation

Refer to Figure 15

1. Using emery cloth (220 or finer), remove surface rust, Loctite® and foreign material from hub, and splined horizontal shaft gearbox.
2. Install gearbox hub (6) on splined output gearbox shaft. Install washer and nut. Torque nut to 200 lbs-ft.

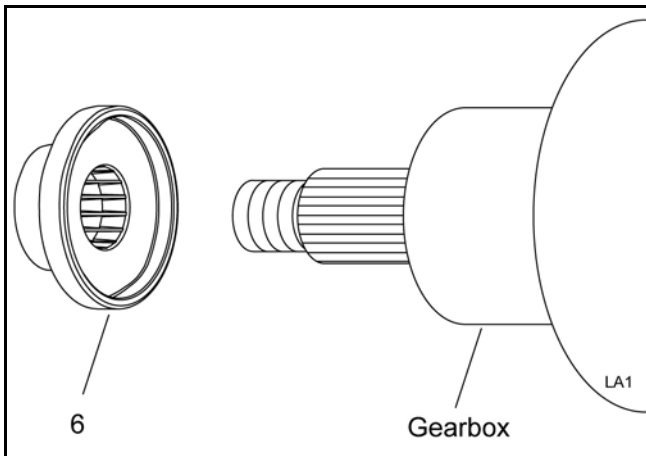


Figure 15.

UNIVERSAL JOINT REPAIR

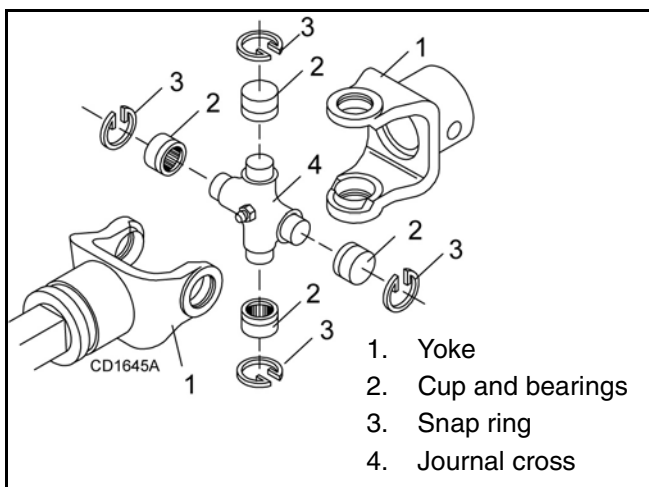


Figure 16. U-Joint Exploded View

U-Joint Disassembly

1. Remove external snap rings from yokes in four locations as shown in Figure 17.

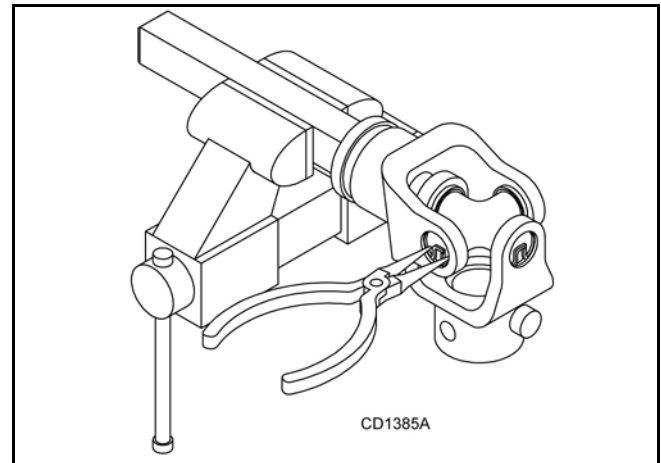


Figure 17.

2. With snap rings removed, support drive in vise, hold yoke in hand, and tap on yoke to drive cup up out of yoke. See Figure 18.

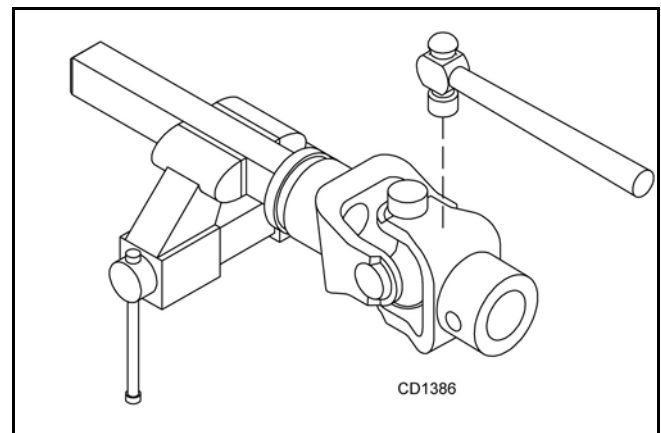


Figure 18.

3. Clamp cup in vise as shown in Figure 19 and tap on yoke to completely remove cup from yoke. Repeat Step 2 and Step 3 for opposite cup.

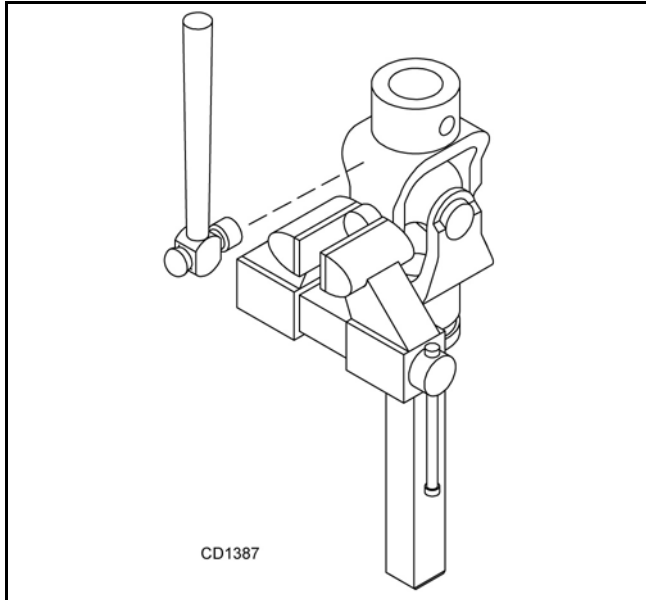


Figure 19.

4. Place universal cross in vise as shown in Figure 20 and tap on yoke to remove cup. Repeat Step 3 for final removal. Drive remaining cup out with a drift and hammer.

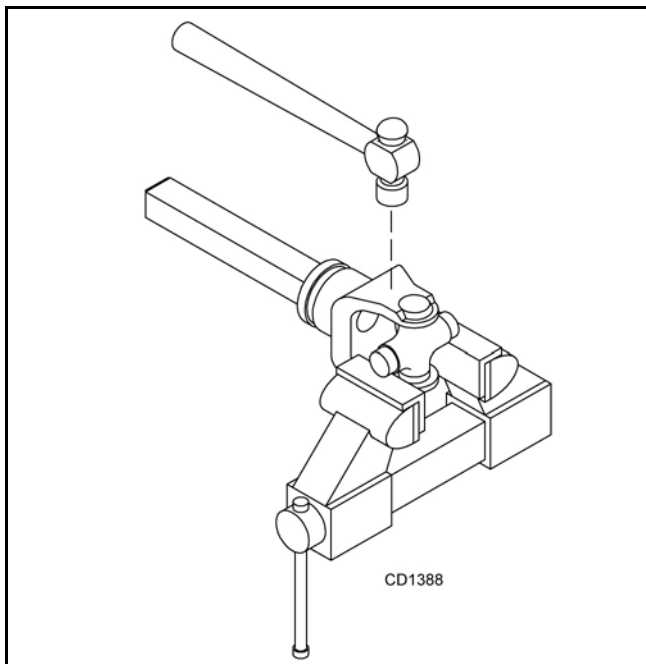


Figure 20.

U-Joint Assembly

1. Place seals securely on bearing cups. Insert cup into yoke from outside and press in with hand pressure as far as possible. Insert journal cross into bearing cup with grease fitting away from shaft. Be careful not to disturb needle bearings. Insert another bearing cup directly across from first cup and press in as far as possible with hand pressure.

Trap cups in vise and apply pressure. Be sure journal cross is started into bearings and continue pressure with vise, squeezing in as far as possible. Tapping the yoke will help.

2. Seat cups by placing a drift or socket (slightly smaller than the cup) on cup and rap with a hammer. See Figure 21. Install snap ring and repeat on opposite cup.
3. Repeat Step 1 and Step 2 to install remaining cups in remaining yoke.
4. Move both yokes in all directions to check for free movement. If movement is restricted, rap sharply on yokes with a hammer to relieve any tension. Repeat until both yokes move in all directions without restriction.

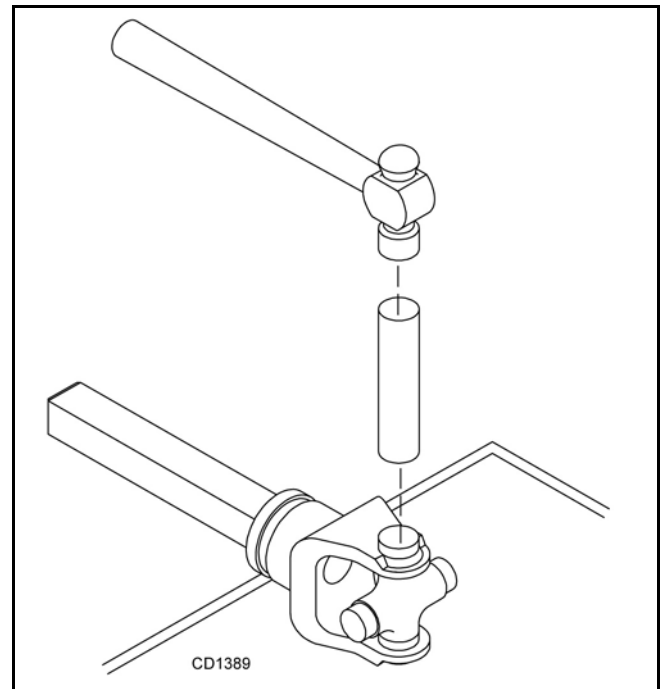


Figure 21.

NOTES

DEALER CHECK LISTS

PRE-DELIVERY CHECK LIST

DEALER'S RESPONSIBILITY

Inspect stump grinder thoroughly after assembly to ensure it is set up properly before delivering it to the customer. The following check list is a reminder of points to inspect. Check off each item as it is found satisfactory or after corrections are made.

- ___ Check that shields and guards are properly installed and in good condition. Replace if damaged.
- ___ Check all bolts to be sure they are properly torqued.
- ___ Gearboxes are not filled at the factory. Prior to delivery, fill as specified in the Tractor Stability, page 10 and check to see that there are no leaking seals.
- ___ Check that all cotter pins and safety pins are properly installed. Replace if damaged.
- ___ Check and grease all lubrication points as identified in Driveline Lubrication, page 14.

DELIVERY CHECK LIST

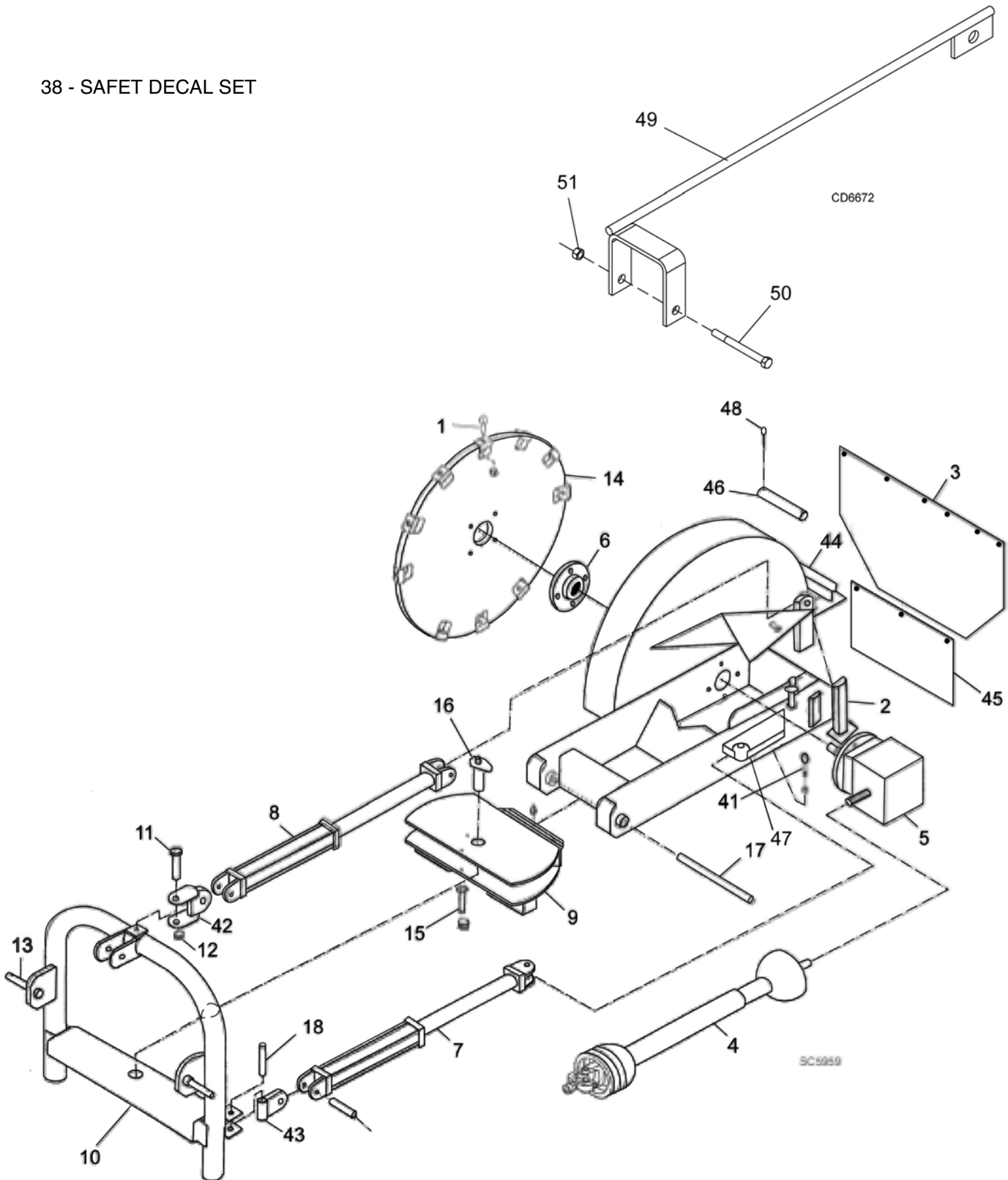
DEALER'S RESPONSIBILITY

- ___ Point out the safety decals. Explain their meaning and the need to keep them in place and in good condition. Emphasize the increased safety hazards when instructions are not followed.
- ___ Present Operator's Manual and request that customer and all operators read it before operating equipment. Point out the manual safety rules, explain their meanings and emphasize the increased safety hazards that exist when safety rules are not followed.
- ___ Show customer how to make adjustments and properly mount stump grinder to tractor.
- ___ Show customer how to make sure driveline is properly installed and that spring-activated locking pin or collar slides freely and is seated in groove on tractor PTO shaft.
- ___ Instruct customer how to lubricate and explain importance of lubrication.
- ___ Point out the correct mounting and routing of hydraulic hoses. Explain that during operation, mounting, dismounting and storage, care must be taken to prevent hoses from pulling, twisting and kinking.



STUMP GRINDER ASSEMBLY

38 - SAFET DECAL SET



24 Parts

MAN0155 (Rev. 2/16/2007)

STUMP GRINDER PARTS LIST

REF	PART	QTY	DESCRIPTION	REF	PART	QTY	DESCRIPTION
1	1004500	25	Carbide tooth w/bolt & lock nut	NS	31979		3/8 NC Lock nut, grade C (Safety shield)
2	1004505	1	Jack stand	NS	565 *		3/8 Flat washer (Safety shield)
3	1004506	1	Safety shield	NS	30068 *	4	3/4 NC x 2-1/2 HHCS GR5 (gearbox)
4	1004510	1	Complete drive assembly w/slip clutch	NS	2371 *	4	3/4 NC Lock nut (gearbox)
5	1004511		Gearbox w/bolts & lock nuts	NS	11854 *	4	5/8 NC x 2-1/2 HHCS GR5 (hub to wheel)
6	1004513	1	Gearbox hub	NS	6239 *	4	5/8 NC Lock nut (hub to wheel)
7	1004515	1	Complete side cylinder	NS	5608 *		1/4 x 1-1/2 Roll pin
7A	1004558	1	Seal kit (side cylinder)	NS	1004516		Pin w/clip (side cylinder)
8	1004517	1	Complete top cylinder	NS	1004518		Pin w/clip (top cylinder)
8A	1004559	1	Seal kit (top cylinder)	NS	1004519		3/8" Swivel fitting
9	1004520	1	Swivel assembly	NS	1004523		Grease fitting
10	1004525	1	3-Point attachment bracket	NS	33000	1	3/8 x 2-1/4 Lynch pin
11	2377	1	Top cylinder / swivel bolt, 3/4 NC x 6 HHCS GR5	38	1004550	1	Safety decal set
12	2371	1	Top cylinder / swivel nut, 3/4 NC lock nut	41	1005516	1	Swivel bolt assembly (used on prior models)
13	33661	2	Tractor attachment pin (Cat 1) or	42	1010795	1	Top cylinder swivel attachment
13	30006	2	Tractor attachment pin (Cat 2)	NS	1004519		3/8" Swivel fitting
14	1004528	1	Cutting wheel with teeth	43	1010796	1	Side cylinder swivel attachment
14	1004529	1	Cutting wheel without teeth	44	1010797	1	Bracket shield mounting
15	23479	1	Swivel bolt 1/2 NC x 5 HHCS GR5	45	1010799	1	Debris guard
16	1004522	1	Swivel 3-point pin with clips	46	1010798	1	Pin bracket mount
17	1004521	1	Swivel assembly pin with clips	47	1010794	1	Cylinder pivot weld on
18	1004560	2	Swivel bar pin	48	2452 *	2	3/16 x 2-1/2 Cotter Pin
NS	1004501	2	Hose, 1/4 x 5' (top cylinder)	NS	1009283	1	Depth gauge kit SG100 retrofit (includes items 49-51 and decal) (For S/N 948492 and below)
NS	1004502	2	Elbow, 1/4" 90°	49	1009282 †	1	WA Depth gauge SG100
NS	1004503	2	Restrictor fitting	50	*	1	1/4 NC x 3-3/4 HHCS GR2
NS	1004504	2	Hose, 1/4" x 6' (side cylinder)	51	6128† *	1	1/4 NC Lock nut
NS	21022 *		1/4" x 2" Roll pin	NS	1009284 †	1	Decal, Instructional SG100 digging depth
NS	6697 *		3/8 x 1 Carriage bolt				
NS	976 *		3/8 NC x 1-1/2 HHCS GR5 (Safety shield)				

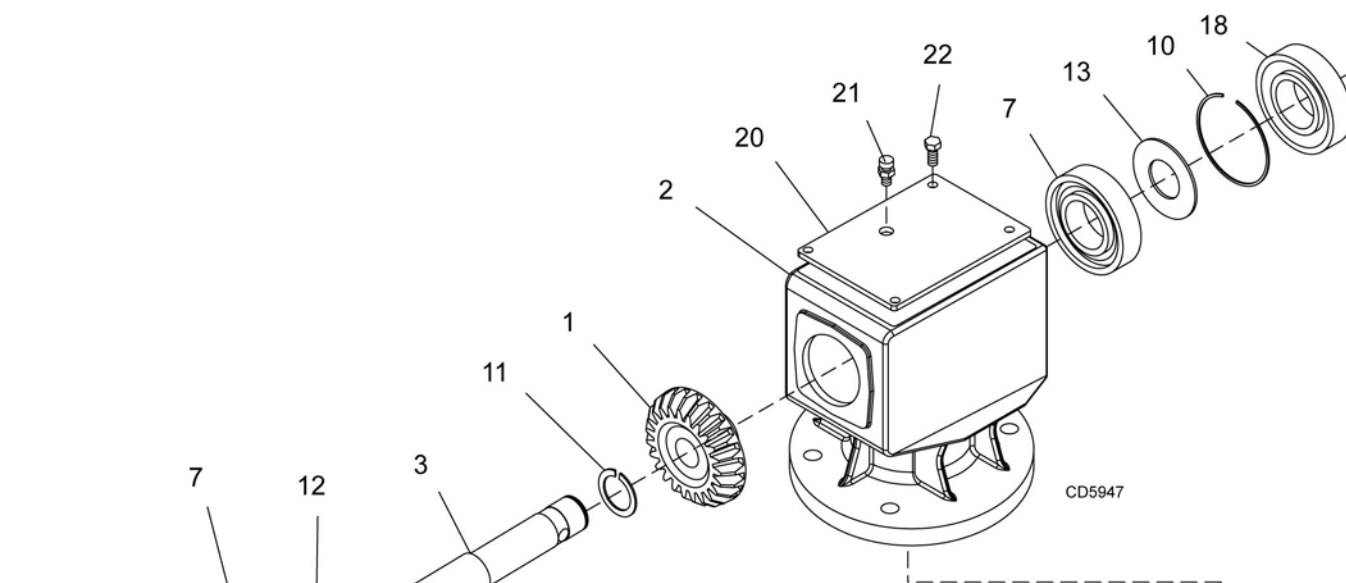
* Standard hardware, obtain locally

NS Not Shown

† Repair parts for S/N 948493 and above

HHCS Hex Head Cap Screw

GEARBOX ASSEMBLY



REF	PART	QTY	DESCRIPTION
1	1004531	1	Gear crown Z19 M8
2	N/S	1	Gearbox housing
3	1004532	1	Shaft input 1-3/8 - 6
4	1004535	1	Shaft output
5	1004536	1	Gear pinion Z13 M8
6	39263	2	Bearing cup & cone
7	39411	2	Bearing cup & cone
8	57338	1	Protective washer
9	O/L	1	Cotter pin B 4 x 60
10	57320	2	Snap ring 85 UNI 7437
11	57321	1	Snap ring 50 UNI 7435
12	*	1	Shim 45.3 x 2.5
13	*	2	Shim 70.3 x 84.7
14	39323	1	Slotted hex nut, M30 x 2.0
15	*	1	Shim 50.3 x 70.3
16	*	1	Shim 40.3 x 61.7 x 1
17	39289	1	Seal, metric 50 x 90 x 10
18	57318	1	Oil Seal 45 x 85 x 10
19	57371	1	Cap
20	1004537	1	Cover
21	1004557	1	Plug, oil level
22	O/L	4	Bolt, M8 x 16 CL 8.8
23	N/S	1	Cotter pin B6 x 60
24	1004533	1	Nut, M40 x 1.5

O/L Obtain Locally

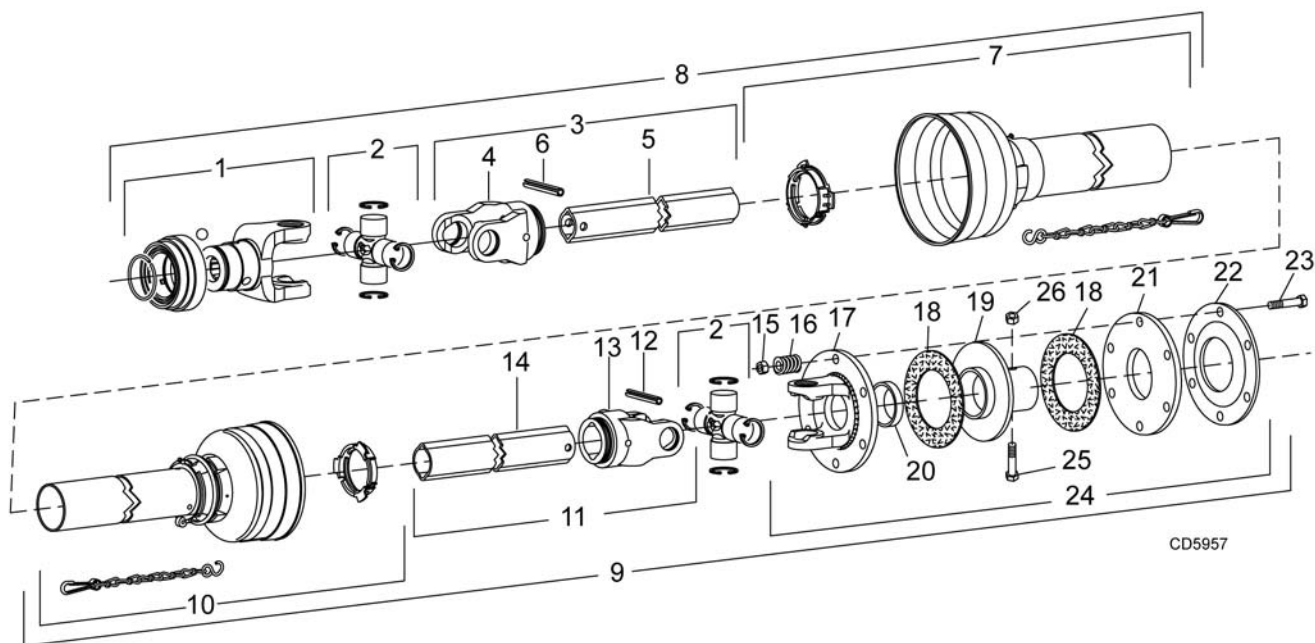
N/S Not Serviced

* Included in shim kit 57471

26 Parts

MAN0155 (Rev. 2/16/2007)

DRIVELINE



REF	PART	QTY	DESCRIPTION	REF	PART	QTY	DESCRIPTION
1	1001325	1	Coupler collar yoke	15	N/S	8	Nut, M10
2	30962	2	U-Joint repair kit	16	1004540	8	Clutch spring
3	1004549	1	Inner yoke & tube profile 60 x 39.61	17	1004541	1	Flanged yoke clutch
4	N/S	1	Outer yoke	18	1004543	2	Clutch lining ring (friction disc)
5	N/S	1	Outer tube	19	1004545	1	Clutch support
6	N/S	1	Roll pin for outer tube	20	1004542	1	Clutch bushing
7	1004552	1	Shield, non-rotating 3.2 x 3.0 x 39.57	21	1004546	1	Inner clutch plate
8	1004554	1	Outer drive half with shield	22	1004547	1	Clutch pressure plate
9	1004555	1	Inner drive half with shield and clutch	23	1004548	8	Bolt, M10 x 85 mm (includes item # 15)
10	1004553	1	Shield, non rotating 2.95 x 2.75 x 37.17	24	1004538	1	Complete clutch assembly
11	1004551	1	Outer yoke & tube profile 60 x 40.20	25	1004544	2	Bolt, M12 x 65 mm (includes item 26)
12	N/S	1	Roll pin for inner tube	26	N/S	2	Nut, M12
13	N/S	1	Inner yoke				
14	N/S	1	Inner tube	1004510	1	1	Complete drive and clutch assembly
				1004539	1	1	Complete Guards (items 7 & 10)

N/S Not Serviced

BOLT TORQUE CHART

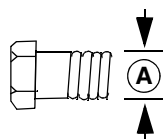
Always tighten hardware to these values unless a different torque value or tightening procedure is listed for a specific application.

Fasteners must always be replaced with the same grade as specified in the manual parts list.

Always use the proper tool for tightening hardware: SAE for SAE hardware and Metric for metric hardware.

Make sure fastener threads are clean and you start thread engagement properly.

All torque values are given to specifications used on hardware defined by SAE J1701 MAR 99 & J1701M JUL 96.



SAE SERIES TORQUE CHART



SAE Grade 2
(No Dashes)

SAE Bolt Head
Identification

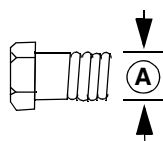


SAE Grade 5
(3 Radial Dashes)



SAE Grade 8
(6 Radial Dashes)

Ⓐ Diameter (Inches)	Wrench Size	MARKING ON HEAD					
		SAE 2		SAE 5		SAE 8	
		lbs-ft	N-m	lbs-ft	N-m	lbs-ft	N-m
1/4"	7/16"	6	8	10	13	14	18
5/16"	1/2"	12	17	19	26	27	37
3/8"	9/16"	23	31	35	47	49	67
7/16"	5/8"	36	48	55	75	78	106
1/2"	3/4"	55	75	85	115	120	163
9/16"	13/16"	78	106	121	164	171	232
5/8"	15/16"	110	149	170	230	240	325
3/4"	1-1/8"	192	261	297	403	420	569
7/8"	1-5/16"	306	416	474	642	669	907
1"	1-1/2"	467	634	722	979	1020	1383



METRIC SERIES TORQUE CHART



Metric
Grade 8.8

Metric Bolt Head
Identification

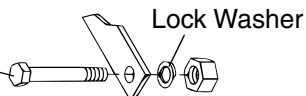


Metric
Grade 10.9

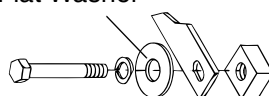
Ⓐ Diameter & Thread Pitch (Millimeters)	Wrench Size	COARSE THREAD				FINE THREAD				Ⓐ Diameter & Thread Pitch (Millimeters)
		MARKING ON HEAD				MARKING ON HEAD				
		Metric 8.8		Metric 10.9		Metric 8.8		Metric 10.9		
		N-m	lbs-ft	N-m	lbs-ft	N-m	lbs-ft	N-m	lbs-ft	
6 x 1.0	10 mm	8	6	11	8	8	6	11	8	6 x 1.0
8 x 1.25	13 mm	20	15	27	20	21	16	29	22	8 x 1.0
10 x 1.5	16 mm	39	29	54	40	41	30	57	42	10 x 1.25
12 x 1.75	18 mm	68	50	94	70	75	55	103	76	12 x 1.25
14 x 2.0	21 mm	109	80	151	111	118	87	163	120	14 x 1.5
16 x 2.0	24 mm	169	125	234	173	181	133	250	184	16 x 1.5
18 x 2.5	27 mm	234	172	323	239	263	194	363	268	18 x 1.5
20 x 2.5	30 mm	330	244	457	337	367	270	507	374	20 x 1.5
22 x 2.5	34 mm	451	332	623	460	495	365	684	505	22 x 1.5
24 x 3.0	36 mm	571	421	790	583	623	459	861	635	24 x 2.0
30 x 3.0	46 mm	1175	867	1626	1199	1258	928	1740	1283	30 x 2.0

Typical Washer Installations

Bolt



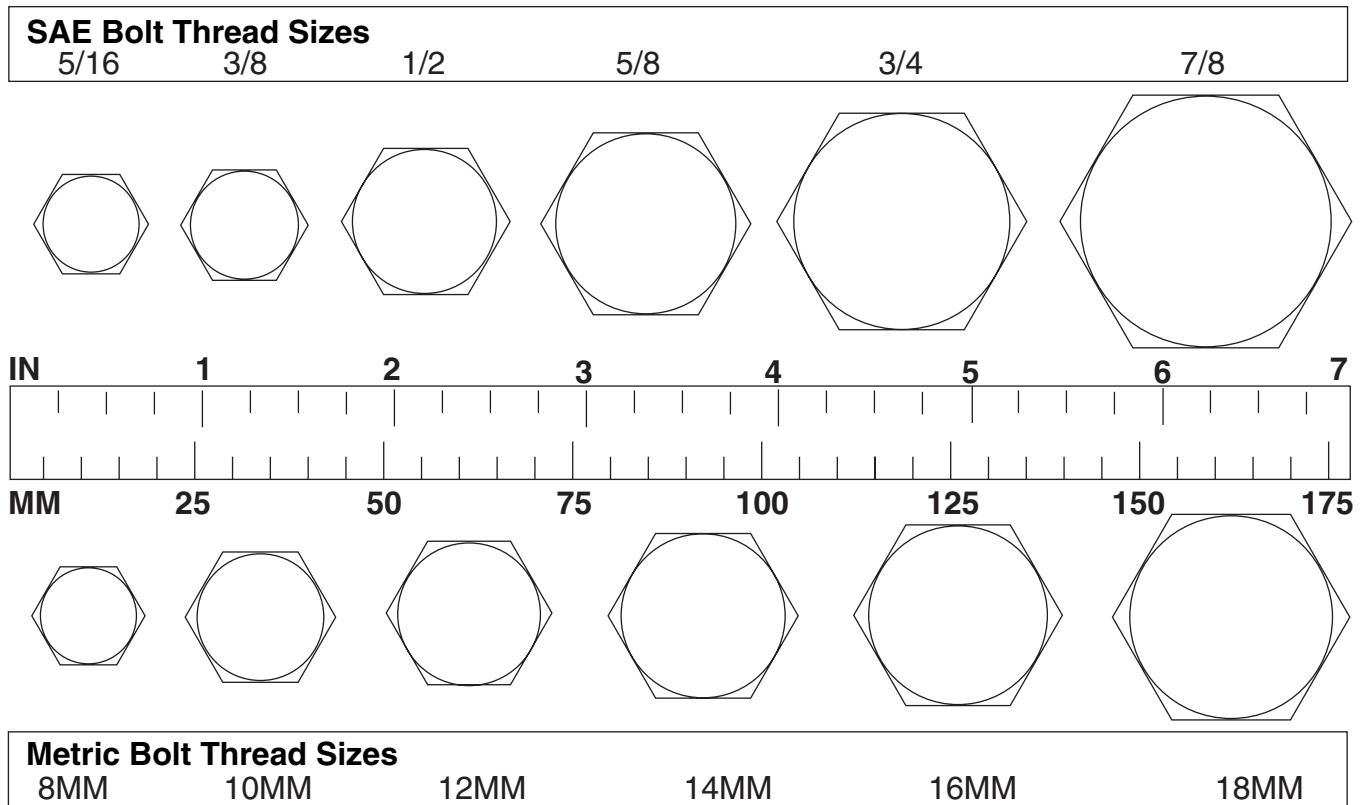
Flat Washer



8/9/00

BOLT SIZE CHART

NOTE: Chart shows bolt thread sizes and corresponding head (wrench) sizes for standard SAE and metric bolts.



ABBREVIATIONS

AG	Agriculture	NC	National Coarse
ATF	Automatic Transmission Fluid	NF	National Fine
BSPP	British Standard Pipe Parallel	NPSM	National Pipe Straight Mechanical
BSPTM.....	British Standard Pipe Tapered Male	NPT	National Pipe Tapered
CV	Constant Velocity	NPT SWF	National Pipe Tapered Swivel Female
CCW	Counter-Clockwise	ORBM.....	O-Ring Boss - Male
CW	Clockwise	P	Pitch
F.....	Female	PBY	Power-Beyond
GA.....	Gauge	psi	Pounds per Square Inch
GR (5, etc.)	Grade (5, etc.)	PTO	Power Take Off
HHCS.....	Hex Head Cap Screw	QD	Quick Disconnect
HT	Heat-Treated	RH	Right Hand
JIC.....	Joint Industry Council 37° Degree Flare	ROPS.....	Roll-Over Protective Structure
LH	Left Hand	RPM.....	Revolutions Per Minute
LT	Left	RT	Right
m	Meter	SAE	Society of Automotive Engineers
mm	Millimeter	UNC.....	Unified Coarse
M.....	Male	UNF	Unified Fine
MPa.....	Mega Pascal	UNS	Unified Special
N	Newton		



WARRANTY

(Replacement Parts For All Models Except Mow'n Machine™
Zero-Turn Mowers and Woods Boundary™ Utility Vehicles)

Woods Equipment Company ("WOODS") warrants this product to be free from defect in material and workmanship for a period of ninety (90) days from the date of delivery of the product to the original purchaser with the exception of V-belts, which will be free of defect in material and workmanship for a period of 12 months.

Under no circumstances will this Warranty apply in the event that the product, in the good faith opinion of WOODS, has been subjected to improper operation, improper maintenance, misuse, or an accident. This Warranty does not cover normal wear or tear, or normal maintenance items.

This Warranty is extended solely to the original purchaser of the product. Should the original purchaser sell or otherwise transfer this product to a third party, this Warranty does not transfer to the third party purchaser in any way. There are no third party beneficiaries of this Warranty.

WOODS' obligation under this Warranty is limited to, at WOODS' option, the repair or replacement, free of charge, of the product if WOODS, in its sole discretion, deems it to be defective or in noncompliance with this Warranty. **The product must be returned to WOODS with proof of purchase within thirty (30) days after such defect or noncompliance is discovered or should have been discovered, routed through the dealer and distributor from whom the purchase was made, transportation charges prepaid.** WOODS shall complete such repair or replacement within a reasonable time after WOODS receives the product. THERE ARE NO OTHER REMEDIES UNDER THIS WARRANTY. THE REMEDY OF REPAIR OR REPLACEMENT IS THE SOLE AND EXCLUSIVE REMEDY UNDER THIS WARRANTY.

THERE ARE NO WARRANTIES WHICH EXTEND BEYOND THE DESCRIPTION ON THE FACE OF THIS WARRANTY. WOODS MAKES NO OTHER WARRANTY, EXPRESS OR IMPLIED, AND WOODS SPECIFICALLY DISCLAIMS ANY IMPLIED WARRANTY OF MERCHANTABILITY AND/OR ANY IMPLIED WARRANTY OF FITNESS FOR A PARTICULAR PURPOSE.

WOODS shall not be liable for any incidental or consequential losses, damages or expenses, arising directly or indirectly from the product, whether such claim is based upon breach of contract, breach of warranty, negligence, strict liability in tort or any other legal theory. Without limiting the generality of the foregoing, Woods specifically disclaims any damages relating to (i) lost profits, business, revenues or goodwill; (ii) loss of crops; (iii) loss because of delay in harvesting; (iv) any expense or loss incurred for labor, supplies, substitute machinery or rental; or (v) any other type of damage to property or economic loss.

This Warranty is subject to any existing conditions of supply which may directly affect WOODS' ability to obtain materials or manufacture replacement parts.

No agent, representative, dealer, distributor, service person, salesperson, or employee of any company, including without limitation, WOODS, its authorized dealers, distributors, and service centers, is authorized to alter, modify, or enlarge this Warranty.

Answers to any questions regarding warranty service and locations may be obtained by contacting:

Woods Equipment Company

2606 South Illinois Route 2
Post Office Box 1000
Oregon, Illinois 61061

800-319-6637 tel
800-399-6637 fax
www.WoodsEquipment.com

WOODS®

ALITEC™

BMP®

CENTRAL FABRICATORS®

GANNON®

GILL®

WAIN-ROY®

WOODS®

WARRANTY

(All Models Except Mow'n Machine™ Zero-Turn Mowers and Woods Boundary™ Utility Vehicles)

Please Enter Information Below and Save for Future Reference.

Date Purchased: _____ From (Dealer): _____

Model Number: _____ Serial Number: _____

Woods Equipment Company ("WOODS") warrants this product to be free from defect in material and workmanship. Except as otherwise set forth below, the duration of this Warranty shall be for TWELVE (12) MONTHS COMMENCING ON THE DATE OF DELIVERY OF THE PRODUCT TO THE ORIGINAL PURCHASER.

Woods backhoe models BH70-X, BH80-X, and BH90-X are warranted for two (2) years from the date of delivery to the original purchaser.

The warranty periods for specific parts or conditions are listed below:

Model Number	Part or Condition Warranted	Duration (from date of delivery to the original purchaser)
PHD25, PHD35, PHD65, PHD95, 1260, 2162, 3240, BB48, BB60, BB72, BB84, BB600, BB720, BB840, BB6000, BB7200, BB8400, BW180-2, BW1800, DS96, DS120, DS1260, DSO1260, DS1440, TS1680, RCC42, RM550-2, RM660-2, RM990-3, PRD6000, PRD7200, PRD8400, 7144RD-2, 9180RD-2, 9204RD-2, S15CD, S20CD, S22CD, S25CD, S27CD	Gearbox components	5 years
RDC54, RD60, RD72	Gearbox components	3 years (1 year if used in rental or commercial applications)
RM550-2, RM660-2, RM990-3, PRD6000, PRD7200, PRD8400, 7144RD-2, 9180RD-2, 9204RD-2	Blade spindles	3 years
BB600, BB720, BB840, BB6000, BB7200, BB8400, BW126, BW180, BW1260, BW1800, 1260, 2162, 3240	Rust-through	10 years

Under no circumstances will this Warranty apply in the event that the product, in the good faith opinion of WOODS, has been subjected to improper operation, improper maintenance, misuse, or an accident. This Warranty does not apply in the event that the product has been materially modified or repaired by someone other than WOODS, a WOODS authorized dealer or distributor, and/or a WOODS authorized service center. This Warranty does not cover normal wear or tear, or normal maintenance items. This Warranty also does not cover repairs made with parts other than those obtainable through WOODS.

This Warranty is extended solely to the original purchaser of the product. Should the original purchaser sell or otherwise transfer this product to a third party, this Warranty does not transfer to the third party purchaser in any way. There are no third party beneficiaries of this Warranty.

WOODS makes no warranty, express or implied, with respect to engines, batteries, tires or other parts or accessories not manufactured by WOODS. Warranties for these items, if any, are provided separately by their respective manufacturers.

WOODS' obligation under this Warranty is limited to, at WOODS' option, the repair or replacement, free of charge, of the product if WOODS, in its sole discretion, deems it to be defective or in noncompliance with this Warranty. **The product must be returned to WOODS with proof of purchase within thirty (30) days after such defect or noncompliance is discovered or should have been discovered, routed through the dealer and distributor from whom the purchase was made, transportation charges prepaid.** WOODS shall complete such repair or replacement within a reasonable time after WOODS receives the product. THERE ARE NO OTHER REMEDIES UNDER THIS WARRANTY. THE REMEDY OF REPAIR OR REPLACEMENT IS THE SOLE AND EXCLUSIVE REMEDY UNDER THIS WARRANTY.

THERE ARE NO WARRANTIES WHICH EXTEND BEYOND THE DESCRIPTION ON THE FACE OF THIS WARRANTY. WOODS MAKES NO OTHER WARRANTY, EXPRESS OR IMPLIED, AND WOODS SPECIFICALLY DISCLAIMS ANY IMPLIED WARRANTY OF MERCHANTABILITY AND/OR ANY IMPLIED WARRANTY OF FITNESS FOR A PARTICULAR PURPOSE.

WOODS shall not be liable for any incidental or consequential losses, damages or expenses, arising directly or indirectly from the product, whether such claim is based upon breach of contract, breach of warranty, negligence, strict liability in tort or any other legal theory. Without limiting the generality of the foregoing, Woods specifically disclaims any damages relating to (i) lost profits, business, revenues or goodwill; (ii) loss of crops; (iii) loss because of delay in harvesting; (iv) any expense or loss incurred for labor, supplies, substitute machinery or rental; or (v) any other type of damage to property or economic loss.

This Warranty is subject to any existing conditions of supply which may directly affect WOODS' ability to obtain materials or manufacture replacement parts.

No agent, representative, dealer, distributor, serviceperson, salesperson, or employee of any company, including without limitation, WOODS, its authorized dealers, distributors, and service centers, is authorized to alter, modify, or enlarge this Warranty.

Answers to any questions regarding warranty service and locations may be obtained by contacting:

Woods Equipment Company

2606 South Illinois Route 2
Post Office Box 1000
Oregon, Illinois 61061

800-319-6637 tel
800-399-6637 fax
www.WoodsEquipment.com



- ALITEC™**
- BMP®**
- CENTRAL FABRICATORS®**
- GANNON®**
- GILL®**
- WAIN-ROY®**
- WOODS®**

PART NO.
MAN0155

**Woods Equipment
Company**

2606 South Illinois Route 2
Post Office Box 1000
Oregon, Illinois 61061

800-319-6637 tel
800-399-6637 fax
www.WoodsEquipment.com

WOODS®

© 2001 Woods Equipment Company. All rights reserved. WOODS, the Woods logo, and "Tested. Proven. Unbeatable." are trademarks of Woods Equipment Company. All other trademarks, trade names, or service marks not owned by Woods Equipment Company that appear in this manual are the property of their respective companies or mark holders. Specifications subject to change without notice.

Free Manuals Download Website

<http://myh66.com>

<http://usermanuals.us>

<http://www.somanuals.com>

<http://www.4manuals.cc>

<http://www.manual-lib.com>

<http://www.404manual.com>

<http://www.luxmanual.com>

<http://aubethermostatmanual.com>

Golf course search by state

<http://golfingnear.com>

Email search by domain

<http://emailbydomain.com>

Auto manuals search

<http://auto.somanuals.com>

TV manuals search

<http://tv.somanuals.com>