

Instruction Sheet

Model D3273

Gravity Feed Spray Gun

INTRODUCTION

This gravity feed spray gun with a 1.4mm nozzle includes an in-line regulator for precise control and a chrome finish for easy clean-up.

SETUP

Attach the regulator to the base of the spray gun, then attach the airline to the regulator with a 1/4 NPT fitting. Use the adjustment knob on the regulator to set the air pressure to 30 PSI.

ADJUSTMENTS

See Figure 1 to identify the location of the spray gun controls and adjust in the following order:

1. **Fluid Control**—Adjusts the trigger travel, which affects the volume of paint released.
2. **Air Flow Control**—Adjusts the volume of air that mixes with the paint, and thus, increases or decreases the paint atomization.
3. **Pattern Control**—Variably adjusts the spray pattern from round to a wide fan.
4. **Nozzle Control**—Adjusts the spray pattern from vertical to horizontal.

OPERATIONS

Hold the sprayer 6"-8" from the workpiece, and keep the spray gun perpendicular to the workpiece during strokes. *DO NOT pivot your wrist when spraying!*

MAINTENANCE

1. Clean the spray gun by flushing it with thinner; however, *DO NOT immerse the gun in the thinner!*
2. Regularly clean the filter between the container and spray gun.
3. To avoid internal damage, only use the included brush when cleaning inside the spray gun orifices.

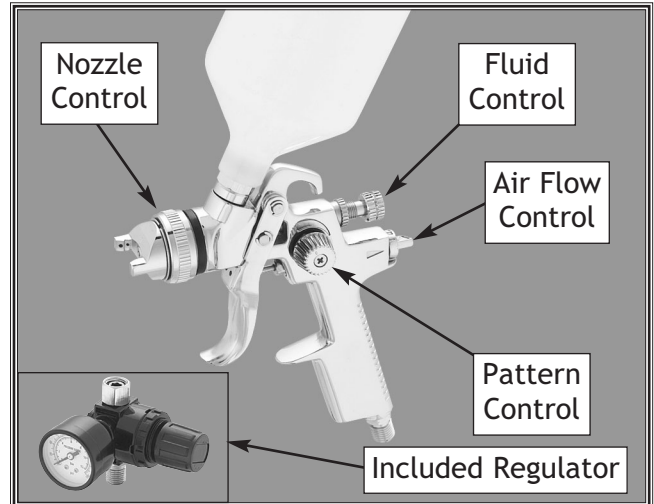
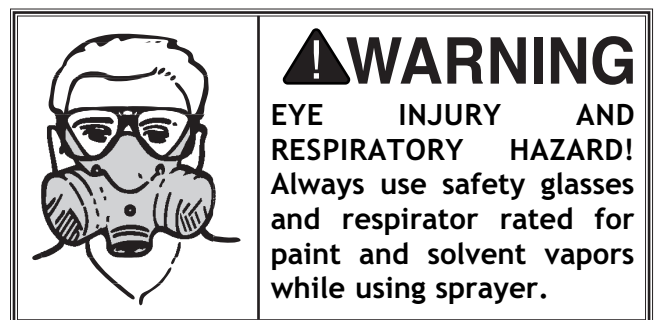
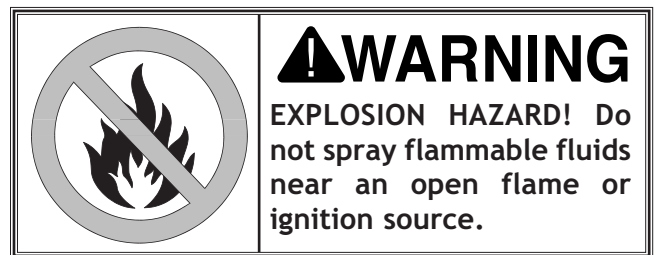


Figure 1. Model D3273.

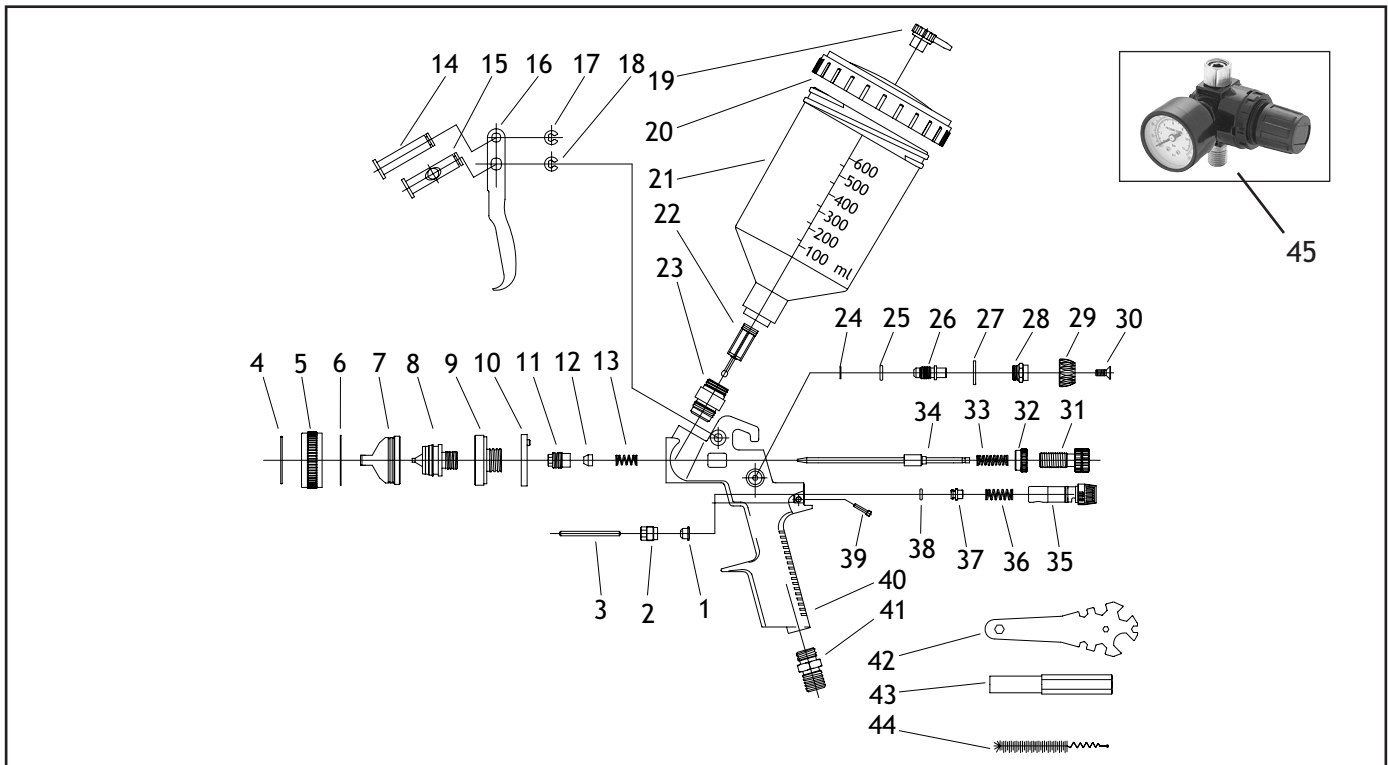


COPYRIGHT © BY WOODSTOCK INTERNATIONAL, INC.

WARNING: NO PORTION OF THIS DOCUMENT MAY BE REPRODUCED IN ANY SHAPE OR FORM WITHOUT THE WRITTEN APPROVAL OF WOODSTOCK INTERNATIONAL, INC.

SEPTEMBER 2003, PRINTED IN CHINA.

D3273 Parts Diagram



REF	PART #	DESCRIPTION
01	XD3277001	SEAL WASHER
02	XD3277002	SWITCH KNOB
03	XD3277003	SWITCH POLE
04	XD3277004	LOCKED SPRING
05	XD3277005	NUT
06	XD3277006	WASHER
07	XD3277007	ATOMIZATION
08	XD3277008	FLUID NOZZLE
09	XD3277009	FLUID NOZZLE PLUG
10	XD3277010	WASHER
11	XD3277011	DIRECTION SCREW
12	XD3277012	WASHER
13	XD3277013	SPRING
14	XD3277014	TRIGGER PIN I
15	XD3277015	TRIGGER PIN II
16	XD3277016	TRIGGER
17	XD3277017	SNAP RETAINER
18	XD3277018	SNAP RETAINER
19	XD3277019	BREATHER PLUG
20	XD3277020	CONTAINER COVER
21	XD3277021	CONTAINER
22	XD3277022	FILTER
23	XD3277023	FLUID

REF	PART #	DESCRIPTION
24	XD3277024	SNAP RETAINER
25	XD3277025	O-RING
26	XD3277026	PATTERN ADJ.
27	XD3277027	COPPER WASHER
28	XD3277028	PATTERN ADJ. KNOB
29	XD3277029	PATTERN ADJ. SCREW
30	XD3277030	SCREW
31	XD3277031	FLUID ADJ. KNOB
32	XD3277032	JOINT CAP
33	XD3277033	FLUID NEEDLE SPRING
34	XD3277034	FLUID ADJ. NEEDLE
35	XD3277035	MODULATOR
36	XD3277036	SWITCH SPRING
37	XD3277037	SWITCH BLOCK
38	XD3277038	O-RING
39	XD3277039	SCREW
40	XD3277040	GUN BODY
41	XD3277041	AIR INLET PLUG
42	XD3277042	TOOL WRENCH
43	XD3277043	HEX WRENCH
44	XD3277044	BRUSH
45	D3279	REGULATOR

Free Manuals Download Website

<http://myh66.com>

<http://usermanuals.us>

<http://www.somanuals.com>

<http://www.4manuals.cc>

<http://www.manual-lib.com>

<http://www.404manual.com>

<http://www.luxmanual.com>

<http://aubethermostatmanual.com>

Golf course search by state

<http://golfingnear.com>

Email search by domain

<http://emailbydomain.com>

Auto manuals search

<http://auto.somanuals.com>

TV manuals search

<http://tv.somanuals.com>