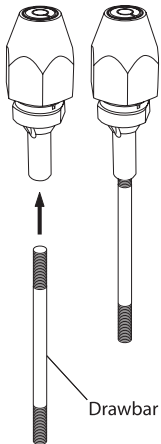


D3080 and D3392 Router Bit Spindle Installation Instructions

⚠ WARNING

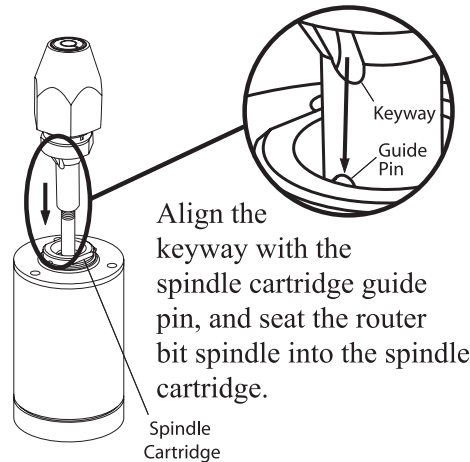
When using this router bit spindle, **ONLY** operate your shaper in the **COUNTER-CLOCKWISE** direction as looking downward at the spindle. Router bits are designed to cut in the counter-clockwise direction only. **DO NOT** operate the shaper in the clockwise direction to make any sort of router bit back-cut. If this warning is ignored, the workpiece can kickback, the collet can loosen and throw the cutter causing injury, or death.

1



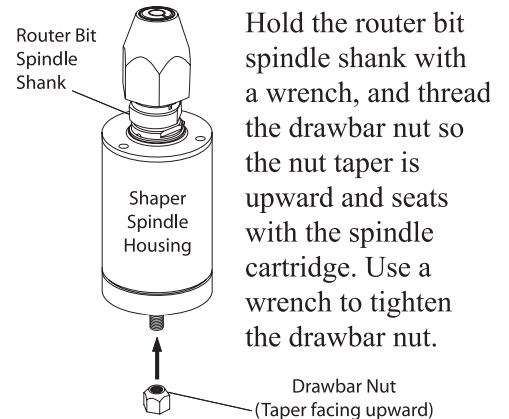
Completely thread the drawbar up and into the router bit spindle approximately 10-15 turns until the drawbar is tight.

2



Align the keyway with the spindle cartridge guide pin, and seat the router bit spindle into the spindle cartridge.

3



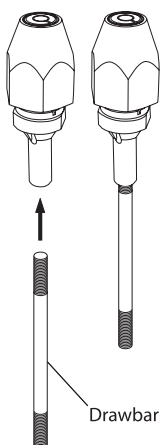
Hold the router bit spindle shank with a wrench, and thread the drawbar nut so the nut taper is upward and seats with the spindle cartridge. Use a wrench to tighten the drawbar nut.

D3080 and D3392 Router Bit Spindle Installation Instructions

⚠ WARNING

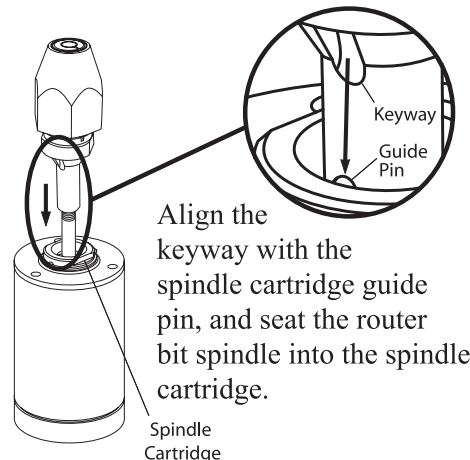
When using this router bit spindle, **ONLY** operate your shaper in the **COUNTER-CLOCKWISE** direction as looking downward at the spindle. Router bits are designed to cut in the counter-clockwise direction only. **DO NOT** operate the shaper in the clockwise direction to make any sort of router bit back-cut. If this warning is ignored, the workpiece can kickback, the collet can loosen and throw the cutter causing injury, or death.

1



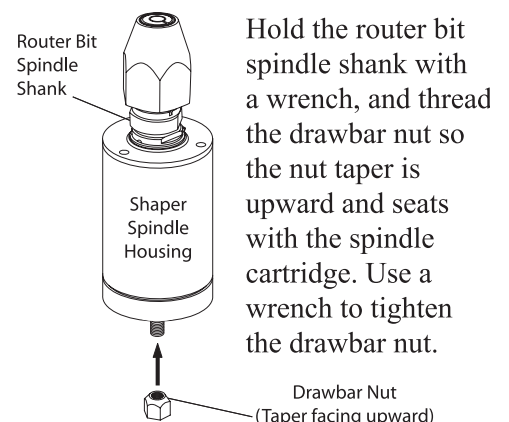
Completely thread the drawbar up and into the router bit spindle approximately 10-15 turns until the drawbar is tight.

2



Align the keyway with the spindle cartridge guide pin, and seat the router bit spindle into the spindle cartridge.

3



Hold the router bit spindle shank with a wrench, and thread the drawbar nut so the nut taper is upward and seats with the spindle cartridge. Use a wrench to tighten the drawbar nut.

Free Manuals Download Website

<http://myh66.com>

<http://usermanuals.us>

<http://www.somanuals.com>

<http://www.4manuals.cc>

<http://www.manual-lib.com>

<http://www.404manual.com>

<http://www.luxmanual.com>

<http://aubethermostatmanual.com>

Golf course search by state

<http://golfingnear.com>

Email search by domain

<http://emailbydomain.com>

Auto manuals search

<http://auto.somanuals.com>

TV manuals search

<http://tv.somanuals.com>