

# Installation Guide

Wyse® V90L/LE Thin Client  
1-GB or 2-GB Flash Upgrade Option Kit

Issue: 061908  
PN: 883884-08L Rev. A



## Copyright Notice

© 2008, Wyse Technology Inc. All rights reserved.

This manual and the software and firmware described in it are copyrighted. You may not reproduce, transmit, transcribe, store in a retrieval system, or translate into any language or computer language, in any form or by any means, electronic, mechanical, magnetic, optical, chemical, manual or otherwise, any part of this publication without express written permission.

## End User License Agreement (“License”)

A copy of the Wyse Technology End User License Agreement is included in the software and provided for your reference only. The License at <http://www.wyse.com/license> as of the purchase date is the controlling licensing agreement. By copying, using, or installing the software or the product, you agree to be bound by those terms.

## Trademarks

Wyse and Winterm are registered trademarks, and the Wyse logo and Winterm logo are trademarks of Wyse Technology Inc. ICA and MetaFrame are registered trademarks of Citrix Systems Inc. Microsoft and Windows are registered trademarks of Microsoft Corporation. All other products are trademarks and/or registered trademarks of their respective companies. Specifications subject to change without notice.

## Patents

This product and/or associated software are protected by copyright, international treaties, and various patents, including the following U.S. patents: 6,836,885 and 5,918,039.

## Restricted Rights Legend

You acknowledge that the Software is of U.S. origin. You agree to comply with all applicable international and national laws that apply to the Software, including the U.S. Export Administration Regulations, as well as end-user, end-use and country destination restrictions issued by U.S. and other governments. For additional information on exporting the Software, see <http://www.microsoft.com/exporting>.

## Ordering Information

For availability, pricing, and ordering information in the United States and Canada, call 1-800-GET-WYSE (1-800-438-9973) or visit us at <http://www.wyse.com>. In all other countries, contact your sales representative.

## FCC Statement

This equipment has been tested and found to comply with the limits for either Class A or Class B digital devices (refer to "Regulatory Compliance for Thin Clients"), pursuant to Part 15 of the FCC Rules. These limits are designed to provide reasonable protection against harmful interference in a residential installation. This equipment generates, uses, and can radiate radio frequency energy and, if not installed and used in accordance with the instructions, may cause harmful interference to radio communications. However, there is no guarantee that interference will not occur in a particular installation. If this equipment does cause harmful interference to radio or television reception, which can be determined by turning the equipment off and on, the user is encouraged to try to correct the interference by one or more of the following measures:

- Reorient or relocate the receiving antenna.
- Increase the separation between the equipment and the receiver.
- Connect the equipment into an outlet on a circuit different from that to which the receiver is connected.
- Consult the dealer or an experienced radio/TV technician for help.



### Caution

Changes or modifications not covered in this manual must be approved in writing by the manufacturer's Regulatory Engineering department. Changes or modifications made without written approval may void the user's authority to operate the equipment.

## Regulatory Compliance for Thin Clients

### EMC and Safety Requirements

Model VX0 thin clients are compliant with the regulatory requirements in the regions listed below.

U.S.A. - FCC Part 15 (class B), UL60950

Canada - ICES-003, CAN/CSA-C22 No. 60950

Europe - EN 55022 (class B), EN 61000-3-2 (class A), EN 61000-3-3, EN 55024, EN 90650-1:2000+ALL

Australia / New Zealand - AS/NZS CISPR 22

Japan - VCCI CISPR 22 (class B)

China - CCC GB9254-1998, GB17625.1-2003, GB 4943-2001

Korea - MIC

### RF & EMC Requirements

Model VX0 thin clients with internal wireless option are compliant with the regulatory standards in the regions listed below.

U.S.A. - FCC Part 15 C, 15.401-15.407, FCC 1.1310 (RF exposure)

Canada - RSS-210

Europe - EN 55022 (class B), EN300.328, EN301.489-1, EN301.489-17

Australia / New Zealand - AS/NZS 4771

Japan - Telec (Equipment Radio Regulation, 2006)

China - SRRC (CMII)

Korea - MIC (RRL)

## Canadian DOC Notices

**Class A** - This digital apparatus does not exceed the Class A limits for radio noise emissions from digital apparatus set out in the Radio Interference Regulations of the Canadian Department of Communications. Le présent appareil numérique n'émet pas de bruits radioélectriques dépassant les limites applicables aux appareils numériques de la classe A prescrites dans le Règlement sur le brouillage radioélectrique édicté par le Ministère des Communications du Canada.

**Class B** - This digital apparatus does not exceed the Class B limits for radio noise emissions from digital apparatus set out in the Radio Interference Regulations of the Canadian Department of Communications. Le présent appareil numérique n'émet pas de bruits radioélectriques dépassant les limites applicables aux appareils numériques de la classe B prescrites dans le Règlement sur le brouillage radioélectrique édicté par le Ministère des Communications du Canada.

## Wireless Usage and Requirements

Radio transmitting type devices (RF module) are present in the Model VX0 as an option. These devices operate in the 2.4 GHz band (i.e. 802.11b/g WLAN & Bluetooth).

As a general guideline, a separation of 20 cm (8 inches) between the wireless device and the body, for use of a wireless device near the body (this does not include extremities) is typical. This device should be used more than 20 cm (8 inches) from the body when wireless devices are on and transmitting. Some circumstances require restrictions on wireless devices. Examples of common restrictions include:

- When in environments where you are uncertain of the sanction to use wireless devices, ask the applicable authority for authorization prior to use or turning on the wireless device.
- Every country has different restrictions on the use of wireless devices. Since your system is equipped with a wireless device, when traveling between countries with your system, check with the local Radio Approval authorities prior to any move or trip for any restrictions on the use of a wireless device in the destination country.
- Wireless devices are not user-serviceable. Do not modify them in any way. Modification to a wireless device will void the authorization to use it. Please contact the manufacturer for service.

## Cable Notice

The use of shielded I/O cables is required when connecting this equipment to any and all optional peripheral or host devices. Failure to do so may cause interference and violate FCC and international regulations for electromagnetic interference.

## Device Power Supply

For use with external power supply included in the shipping carton, or a certified equivalent model supplied by the manufacturer.

### Model VX0, Product V90L/LE Thin Clients

For use with External Power Supply Model LSE9802A1255 or certified equivalent model supplied by the manufacturer, output rated for minimum 12Vdc, 4.0A.



#### Caution

Replace power supply with the same or equivalent type as recommended by the manufacturer.

## Battery Information

Model VX0 thin clients contain a replaceable battery.



#### Warning

There is a risk of explosion if the battery is replaced by an incorrect type. Always dispose of used batteries according to the instructions accompanying the battery.



# Contents

About This Guide	1
Before You Begin	1
Kit Warranty	1
What's in the Kit	1
Required Tools and Materials	1
Wyse Technical Support	2
Related Online Resources Available at Wyse	2
Installing the Option Kit	2
Verifying the Thin Client's Operation	5



---

# Installation Guide

## Wyse® V90L/LE Thin Client

### 1-GB or 2-GB Flash Upgrade Option Kit

---

#### About This Guide

This guide describes how to install your 1-GB or 2-GB Flash Upgrade Option Kit in a Wyse V90L/LE thin client. This guide is intended for users of Wyse V90L/LE thin clients.

---

#### Before You Begin

This section provides information about kit warranty, kit contents, the tools needed, and accessing Technical Support and related online resources.

#### Kit Warranty

The warranty on this kit assumes the remaining months of warranty of the thin client in which it is installed, or for 90 days, whichever is greater. Installation of this kit will not void the factory warranty, however the user will be responsible for damage due to improper installation.

#### What's in the Kit

Included in the kit is the 1-GB or 2-GB Flash module pre-loaded with Windows XP.



#### Required Tools and Materials

You will need a #1 Phillips Screwdriver and a small Flat-Edge Screwdriver to install the kit.

**Warning**

The flash module may be susceptible to damage by Electro-Static Discharge (ESD). All industry-standard cautions should be followed to avoid ESD.

**Caution**

Follow all precautions listed in the Quick Start Guide that came with your thin client for disconnecting and reconnecting the thin client.

## Wyse Technical Support

To access Wyse technical resources, visit [AskWyse.com](http://AskWyse.com). If you still have questions, you can submit your questions using the Wyse [Support Request Form](#), or call Customer Support at 1-800-800-WYSE (toll free in U.S. and Canada). Hours of operation are from 7:00 am to 7:00 pm CST, Monday through Friday.

To access international support, visit <http://www.wyse.com/global>.

## Related Online Resources Available at Wyse

Wyse® V90L/LE Thin Client features can found in the Datasheet for your specific thin client model. Datasheets are available on the Wyse Web site at: <http://www.wyse.com/serviceandsupport/support/documentindex.asp>. The *Wyse® Winterm™ 9 series Based on Microsoft® Windows® XP Embedded Reference Guide* provides information and procedures to help administrators set up a server environment, mounting and connecting the thin client, XPe features, utilities and settings, and more. It is available at: <http://www.wyse.com/manuals>. Wyse Thin Computing Software is available on the Wyse Web site at: <http://www.wyse.com/products/software>.

---

## Installing the Option Kit

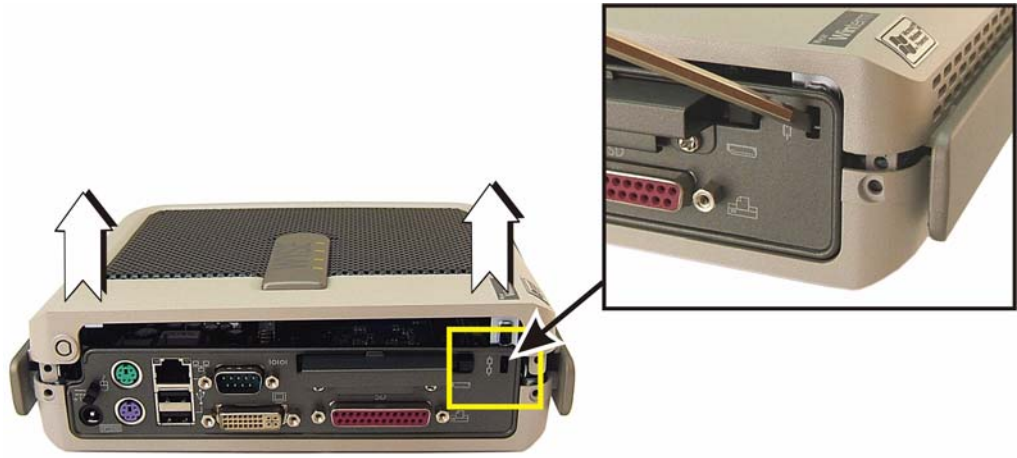
To install the 1-GB or 2-GB Flash Upgrade Option Kit in the V90L/LE thin client:

1. Perform a proper shutdown of the thin client by ending your session and clicking the buttons as they appear; then press the power button to turn off the thin client.
2. Unplug the power cord, power adapter, remove all of the cables from the rear of the unit, and detach the vertical foot.
3. Remove the two screws from the rear of the thin client using a #1 Phillips Screwdriver.

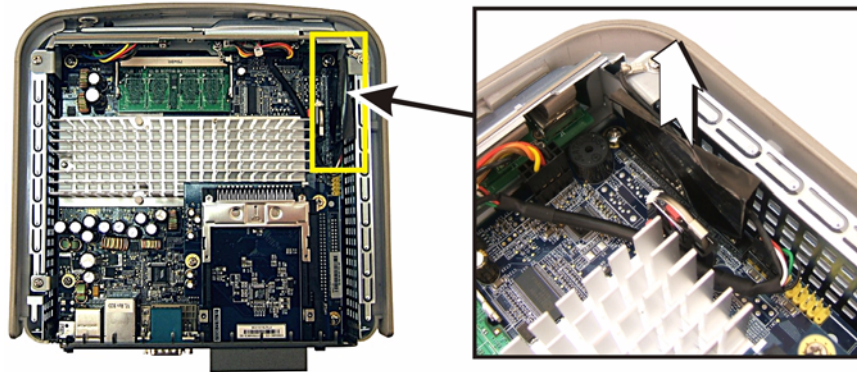




4. Remove the top cover from the thin client by inserting the tip of a small Flat-Edge Screwdriver just inside the edge of the lock receptacle to make contact with the metal liner that lines the opening. Apply pressure inward and downward on the metal liner while pulling up on the plastic housing until it releases.



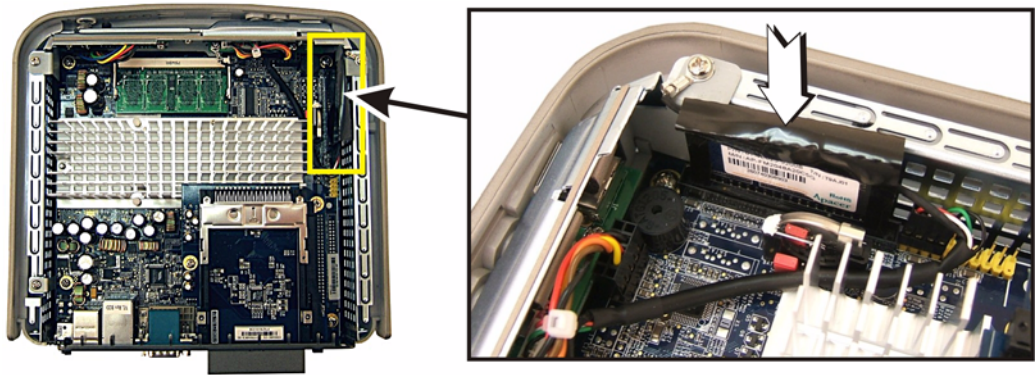
5. Carefully remove the existing Flash module from the socket, noting where the connector of the module is located.



6. Install the 1-GB or 2-GB flash module into the location of the original module making sure to align the plastic tab of the module's connector with the notch in the connector on the board.

**Warning**

The flash module may be susceptible to damage by Electro-Static Discharge (ESD). All industry-standard cautions should be followed to avoid ESD.



7. Replace the top cover and attach the vertical foot.
8. Reconnect the video display, keyboard, mouse, and power adapter to the thin client before connecting to your electrical outlet (do not connect the thin client to the network); then press the power button on the thin client to begin the installation process (this will take a few minutes). During the installation process several windows will open and close automatically.

**Warning**

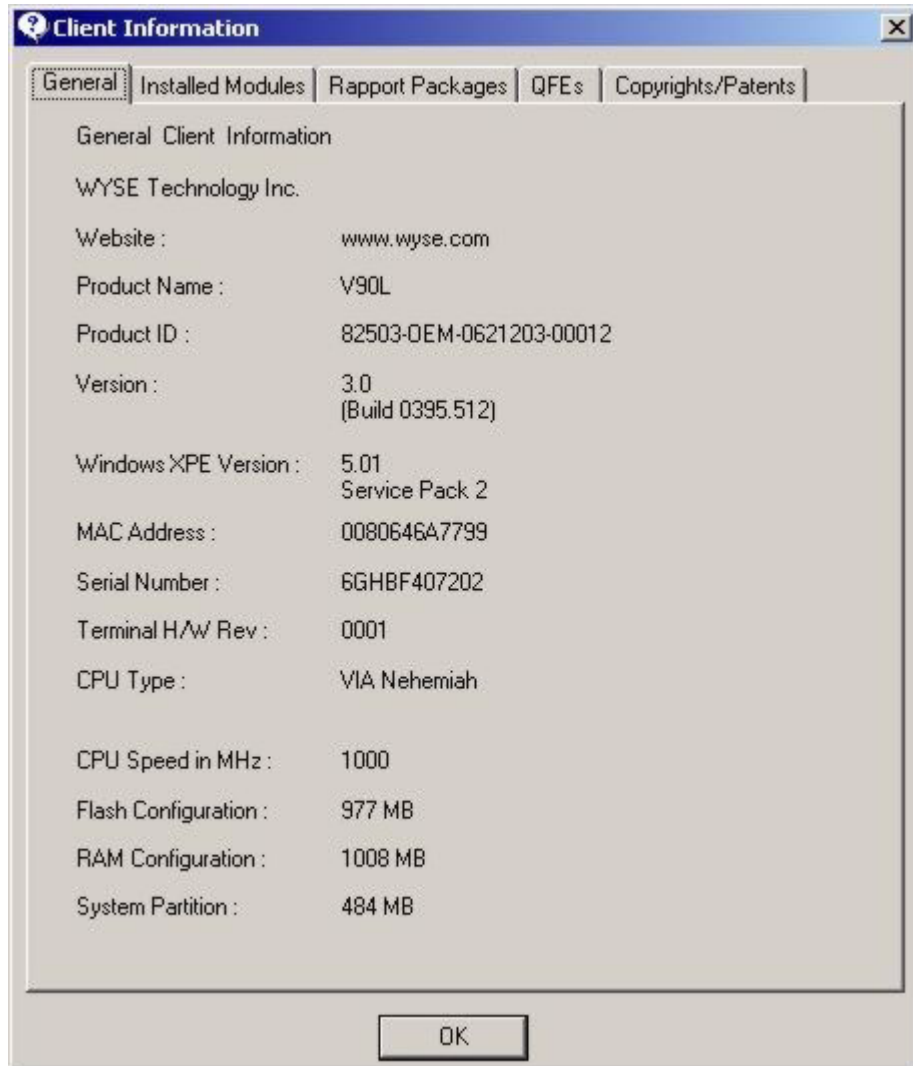
Do not interrupt the installation process.

9. After the installation process is complete, the thin client will automatically restart to the operating system. Connect the thin client to the network and then manually restart the thin client.
10. Proceed to "Verifying the Thin Client's Operation."

## Verifying the Thin Client's Operation

To verify that the installation kit has been installed properly:

1. From the desktop, click **Start | About** to open the Client Information window.



2. Verify that the **MAC address** and **Serial Number** matches the serial number and MAC address on the thin client.
3. Verify that the **Flash Configuration** is approximately **977 MB**.
4. Click **OK** to close the Client Information window. The thin client is ready for operation and setup by the Administrator.

## **Installation Guide**

**Wyse® V90L/LE Thin Client  
1-GB or 2-GB Flash Option Kit  
Issue: 061908**

Written and published by:  
Wyse Technology Inc., June 2008

Created using FrameMaker® and Acrobat®

## Free Manuals Download Website

<http://myh66.com>

<http://usermanuals.us>

<http://www.somanuals.com>

<http://www.4manuals.cc>

<http://www.manual-lib.com>

<http://www.404manual.com>

<http://www.luxmanual.com>

<http://aubethermostatmanual.com>

Golf course search by state

<http://golfingnear.com>

Email search by domain

<http://emailbydomain.com>

Auto manuals search

<http://auto.somanuals.com>

TV manuals search

<http://tv.somanuals.com>