



PARTS LIST

CHAIN SAW

G451/G4500
G5000

NOTE :

1. Use KOMATSU ZENOAH genuine parts specified in the parts list for repair and/or replacement.
2. KOMATSU ZENOAH does not warrant the machines, those which have been damaged by the use of any parts other than those specified by the company.
3. When placing orders of parts for repair and/or replacement, check if the model name and the serial number are suitable to those specified in the parts list, then use parts number described in the parts list.
4. The contents described in the parts list may change due to improvement.
5. The parts for the machine shall be supplied within ten (10) years after the machine is discontinued. [It is possible that some specific parts may be subject to change of their delivery term and list price within the limit of ten (10) years after the machine is discontinued. And it is also possible that some parts may be available even after the limit of ten (10) years.]

APPLICABLE SERIAL NUMBERS : 100101 and up

Nov. 2001

Fig.1 POWER UNIT

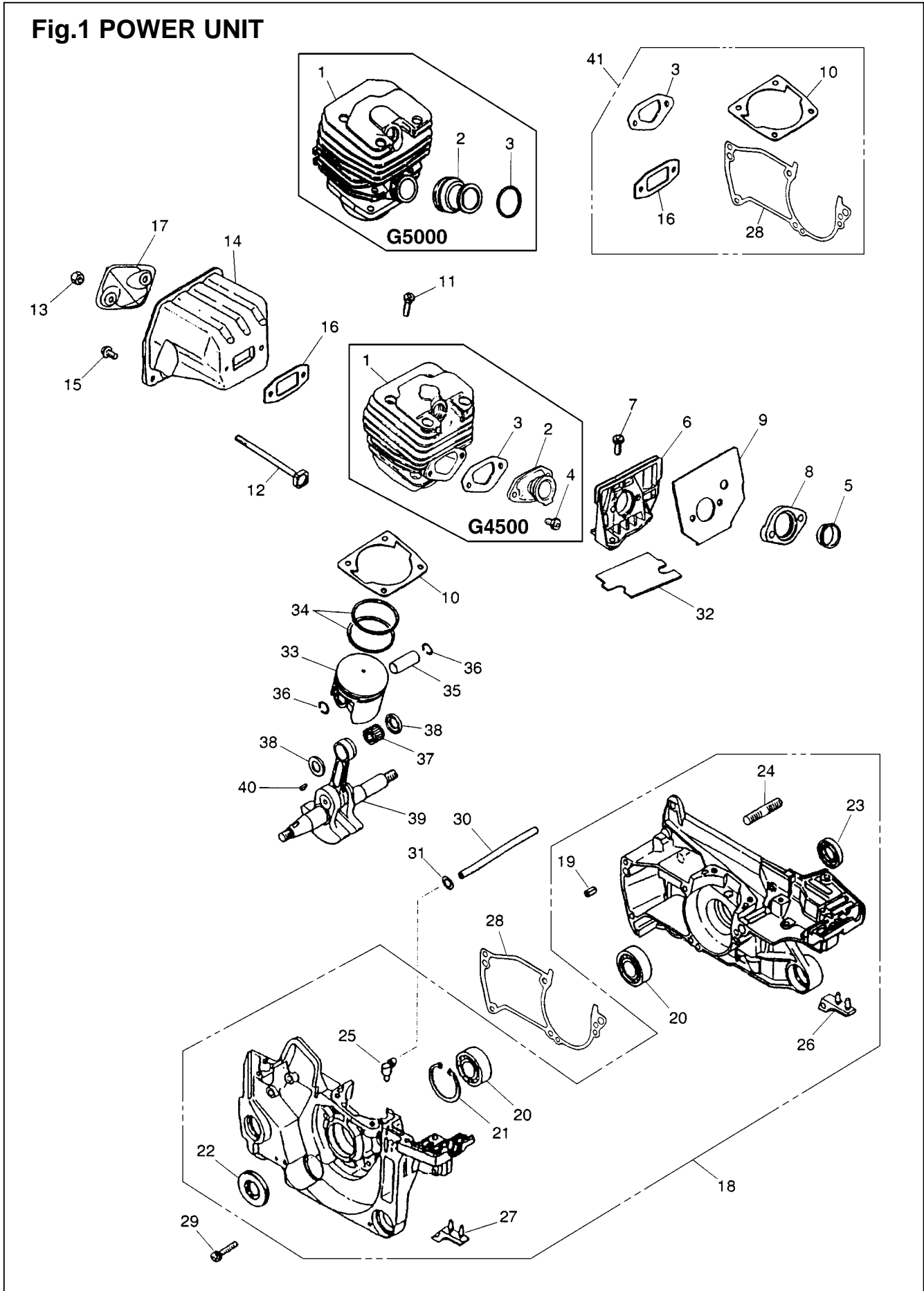


Fig.1 POWER UNIT

G451/G4500

Key#	PART NUMBER	DESCRIPTION	Q'TY /UNIT	NOTE
1	2670-12113	Cylinder	1	ø43
2	2810-14110	Inlet Pipe	1	
3	2817-14121	Gasket (K2810-06012)	1	Kit
4	2670-14130	Screw M5x10	1	
5	2880-14150	Inner Guide	1	
6	2670-14311	Bracket	1	
7	2670-14320	Screw M5x14	2	
8	2880-14350	Spacer	1	
9	2880-14360	Gasket	1	
10	2670-14211	Gasket, Cylinder (K2810-06012)	1	Kit
11	2850-14220	Bolt, Cylinder M5x20	4	
12	2810-15220	Bolt, Muffler M5x83	2	
13	2850-15230	Nut, Muffler M5	2	
14	2810-15113	Muffler	1	
15	2670-14130	Screw M5x10	1	
16	3356-15210	Gasket, Muffler (K2810-06012)	1	Kit
17	2810-15310	Cover	1	
18	2810-2100A	Crankcase Assembly	1	
19	3356-21130	• Spring Pin	3	
20	T4012-21240	• Bearing 15x35x11	2	
21	04065-03515	• Snap Ring ø35	1	
22	2670-21210	• Oil Seal 15x35x4.5	1	
23	2670-21220	• Oil Seal 15x28X4.5	1	
24	2616-21230	• Stud	2	
25	2670-21250	• Elbow	1	
26	2810-22511	• Stopper	1	
27	2810-22521	• Stopper	1	
28	2670-21311	• Gasket, Case (K2810-06012)	1	Kit
29	2670-21320	Screw M5x25	5	
30	2810-22210	Pipe 3x7x105	1	
31	3310-82230	Clip	1	
32	2810-22411	Matte	1	
33	2670-41114	Piston ø43	1	
34	2670-41211	Piston Ring ø43	2	
35	3350-41310	Piston Pin8x11x34.5	1	
36	3350-41320	Snap Ring	2	
37	1400-41410	Needle Bearing 11x15x12.3	1	
38	2670-41510	Washer	2	
39	2880-42001	Crankshaft Complete	1	
40	1000-43240	Key	1	
41	2810-06012	Gasket Kit	1	

G5000

Key#	PART NUMBER	DESCRIPTION	Q'TY /UNIT	NOTE
1	2880-12111	Cylinder	1	ø45
2	2880-14111	Inlet Pipe	1	
3	2880-14120	Spring		
5	2880-14150	Inner Guide	1	
6	2670-14311	Bracket	1	
7	2670-14320	Screw M5x14	2	
8	2880-14350	Spacer	1	
9	2880-14360	Gasket	1	
10	2670-14211	Gasket, Cylinder (K2810-06012)	1	Kit
11	2850-14220	Bolt, Cylinder M5x20	4	
12	2810-15220	Bolt, Muffler M5x83	2	
13	2850-15230	Nut, Muffler M5	2	
14	2810-15113	Muffler	1	
15	2670-14130	Screw M5x10	1	
16	3356-15210	Gasket, Muffler (K2810-06012)	1	Kit
17	2810-15310	Cover	1	
18	2810-2100A	Crankcase Assembly	1	
19	3356-21130	• Spring Pin	3	
20	T4012-21240	• Bearing 15x35x11	2	
21	04065-03515	• Snap Ring ø35	1	
22	2670-21210	• Oil Seal 15x35x4.5	1	
23	2670-21220	• Oil Seal 15x28X4.5	1	
24	2616-21230	• Stud	2	
25	2670-21250	• Elbow	1	
26	2810-22511	• Stopper	1	
27	2810-22521	• Stopper	1	
28	2670-21311	• Gasket, Case (K2810-06012)	1	Kit
29	2670-21320	Screw M5x25	5	
30	2810-22210	Pipe 3x7x105	1	
31	3310-82230	Clip	1	
32	2810-22411	Mat	1	
33	2880-41110	Piston ø45	1	
34	2880-41210	Piston Ring ø45	2	
35	2880-41310	Piston Pin 7.4x11x37.5	1	
36	3350-41320	Snap Ring	2	
37	1400-41410	Needle Bearing 11x15x12.3	1	
38	2670-41510	Washer	2	
39	2880-42001	Crankshaft Complete	1	
40	1000-43240	Key	1	
41	2810-06012	Gasket Kit	1	

Fig.2 IGNITION,STARTING

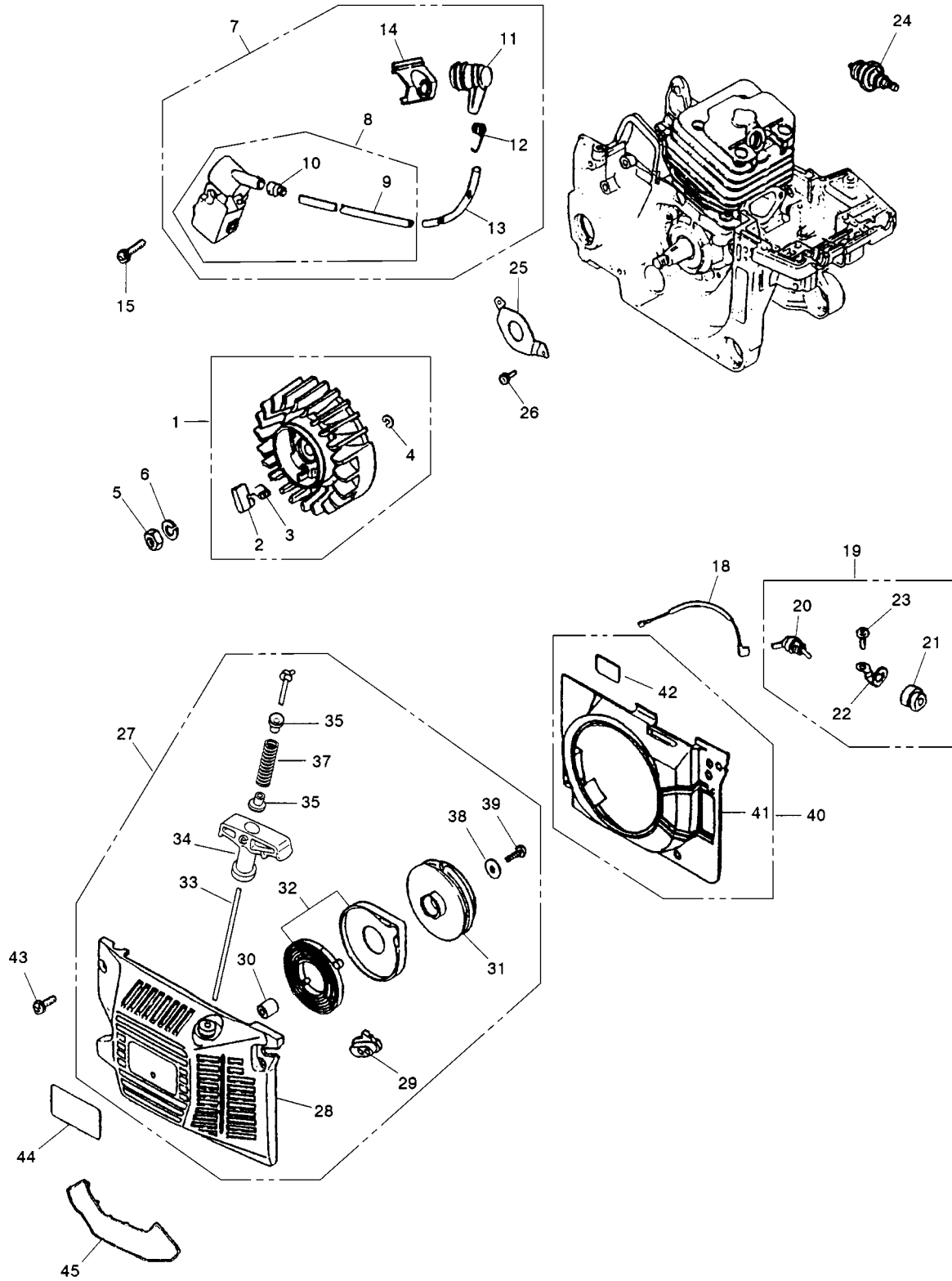


Fig.2 IGNITION,STARTING

G451/G4500

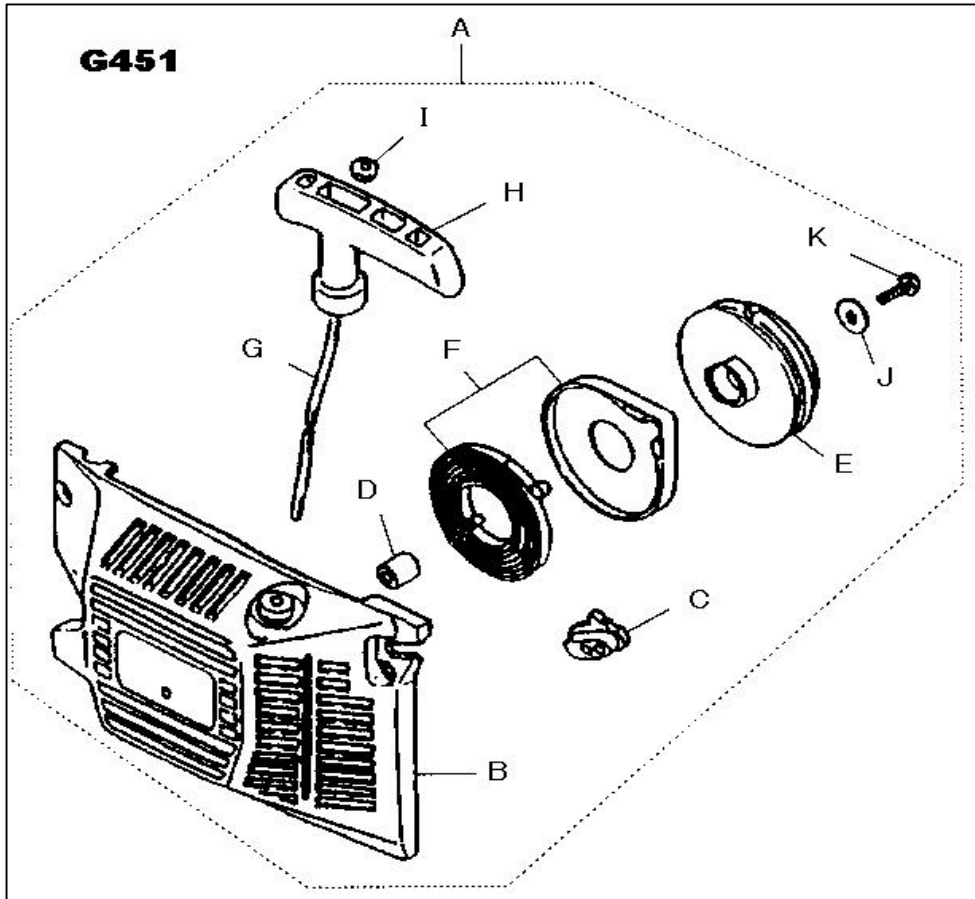
Key#	PART NUMBER	DESCRIPTION	Q'TY /UNIT	NOTE
1	2670-71101	Rotor assembly	1	
2	1850-75220	• Ratchet	2	
3	2670-71130	• Spring	2	
4	0308-00040	• Ring	2	
5	3350-43231	Nut M8	1	
6	0290-20820	Washer M8	1	
7	2880-71300	Coil Assembly	1	
8	2810-71204	• Coil Complete	1	
9	2810-71220	•• Cord	1	
10	2670-71230	•• Grommet	1	
11	2810-72110	• Plug cap	1	
12	1400-72121	• Spring	1	
13	2670-71320	• Tube	1	
14	2810-71250	Grommet	1	
15	2670-14220	Screw M5x20	2	
18	2670-71510	Cord	1	
19	2880-71600	Switch assembly	1	
20	2810-71610	• Switch	1	
21	2670-71621	• Switch Cover	1	
22	2880-71630	• Plate	1	
23	2670-14130	Screw M5x10	1	
24	3699-90431	Spark plug (NGK BPM7Y)	1	
25	2810-21270	Plate	1	
26	0260-30410	Screw M4x10	2	
27	2881-75000	Starter assembly	1	
28	2810-75110	• Recoil case complete	1	
29	2810-75120	• Guide	1	
30	2810-75150	• Boss	1	
31	2670-75212	• Reel	1	
32	3317-75300	• Spring complete	1	
33	2670-75411	• Rope	1	
34	T2041-75420	• Knob	1	
35	T2041-75431	• Collar	2	
37	2881-75440	• Spring B		
38	1400-86280	• Washer	1	
39	2670-14220	• Screw	1	
40	2880-75600	Fan cover complete	1	
41	2670-75613	• Cover	1	
42	2880-75620	• Sheet	1	
43	2670-14320	Screw	4	
44	2811-75132	Label, Recoil	1	
45	2881-98611	Snow protector	1	OP

G5000

Key#	PART NUMBER	DESCRIPTION	Q'TY /UNIT	NOTE
1	2670-71101	Rotor assembly	1	
2	1850-75220	• Ratchet	2	
3	2670-71130	• Spring	2	
4	0308-00040	• Ring	2	
5	3350-43231	Nut M8	1	
6	0290-20820	Washer M8	1	
7	2880-71300	Coil Assembly	1	
8	2810-71204	• Coil Complete	1	
9	2810-71220	•• Cord	1	
10	2670-71230	•• Grommet	1	
11	2810-72110	• Plug cap	1	
12	1400-72121	• Spring	1	
13	2670-71320	• Tube	1	
14	2810-71250	Grommet	1	
15	2670-14220	Screw M5x20	2	
18	2670-71510	Cord	1	
19	2880-71600	Switch assembly	1	
20	2810-71610	• Switch	1	
21	2670-71621	• Switch Cover	1	
22	2880-71630	• Plate	1	
23	2670-14130	Screw M5x10	1	
24	3699-90512	Spark plug (NGK BPM8Y)	1	
25	2810-21270	Plate	1	
26	0260-30410	Screw M4x10	2	
27	2881-75000	Starter assembly	1	
28	2810-75110	• Recoil case complete	1	
29	2810-75120	• Guide	1	
30	2810-75150	• Boss	1	
31	2670-75212	• Reel	1	
32	3317-75300	• Spring complete	1	
33	2670-75411	• Rope	1	
34	T2041-75420	• Knob	1	
35	T2041-75431	• Collar	2	
37	2881-75440	• Spring B	1	
38	1400-86280	• Washer	1	
39	2670-14220	• Screw	1	
40	2880-75600	Fan cover complete	1	
41	2670-75613	• Cover	1	
42	2880-75620	• Sheet	1	
43	2670-14320	Screw	4	
44	2881-75131	Label, Recoil	1	
45	2881-98611	Snow protector	1	OP

RECOIL STARTER of G451AVS

The difference between G451 and G4500 is only the recoil starter.
This is the parts list of G451 recoil starter.



key#	part number	discription	Q'ty/unit
A	2880-75002	starter assy	1
B	2810-75110	case	1
C	2810-75120	guide	1
D	2810-75150	boss	1
E	2670-75211	reel	1
F	3317-75300	spring comp	1
G	2670-75410	rope	1
H	1400-75170	washer	1
I	3310-75431	washer	1
J	1400-86280	screw	1
K	2670-14220	screw	1

Fig.3 HANDLE

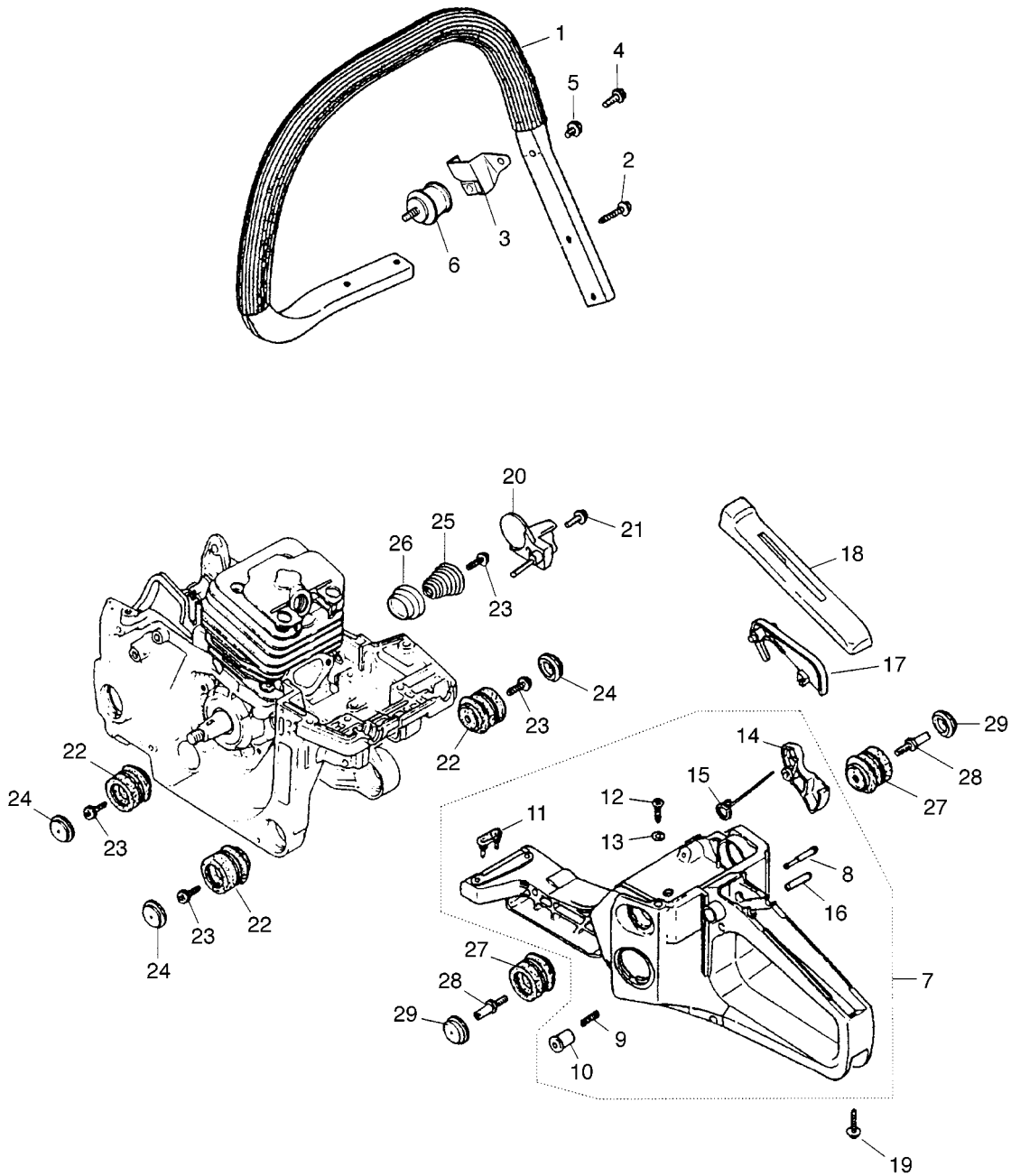


Fig.3 HANDLE

G451/G4500

Key#	PART NUMBER	DESCRIPTION	Q'TY /UNIT	NOTE
1	2810-32100	Left handle complete	1	
2	2671-32210	Screw M5x19 BT	4	
7	2810-33007	Right handle assembly	1	
8	3330-33250	• Stopper	1	
9	3310-33262	• Spring	1	
10	3310-33271	• Knob	1	
11	2810-33280	• Damper (A)	1	
12	2670-75520	• Screw	1	
13	2810-33210	• Gasket	1	
14	2670-33311	• Throttle lever	1	
15	3356-33321	• Throttle spring	1	
16	04025-00524	• Spring pin ø5.2x24	1	
17	3356-33352	Arm	1	
18	2670-34110	Grip cover	1	
19	2671-32210	Screw M5x19 BT	1	
20	2810-25210	Chain catcher	1	
21	2670-14320	Screw M5x14	1	
22	2880-35111	Damper	3	
23	2670-35120	Screw M5x16 BT	4	
24	2810-35150	Damper cap	3	
25	2881-35110	Spring	1	
26	2881-35120	Spacer	4	
27	2880-35211	Damper	2	
28	3350-35170	Bolt	2	
29	2880-35250	Cap	2	

G5000

Key#	PART NUMBER	DESCRIPTION	Q'TY /UNIT	NOTE
1	2880-32101	Left handle complete	1	
2	2671-32210	Screw M5x19 BT	4	
3	2880-32250	Bracket	1	
4	2670-14130	Screw M5x10	1	
5	2880-32270	Screw M5x8	1	
6	2880-31211	Damper	1	
7	2810-33007	Right handle assembly	1	
8	3330-33250	• Stopper	1	
9	3310-33262	• Spring	1	
10	3310-33271	• Knob	1	
11	2810-33280	• Damper (A)	1	
12	2670-75520	• Screw	1	
13	2810-33210	• Gasket	1	
14	2670-33311	• Throttle lever	1	
15	3356-33321	• Throttle spring	1	
16	04025-00524	• Spring pin ø5.2x24	1	
17	3356-33352	Arm	1	
18	2670-34110	Grip cover	1	
19	2671-32210	Screw M5x19 BT	1	
20	2810-25210	Chain catcher	1	
21	2670-14320	Screw M5x14	1	
22	2880-35111	Damper	3	
23	2670-35120	Screw M5x16 BT	4	
24	2810-35150	Damper cap	3	
25	2881-35110	Spring	1	
26	2881-35120	Spacer	4	
27	2880-35211	Damper	2	
28	3350-35170	Bolt	2	
29	2880-35250	Cap	2	

Fig.4 FUELING SYSTEMS

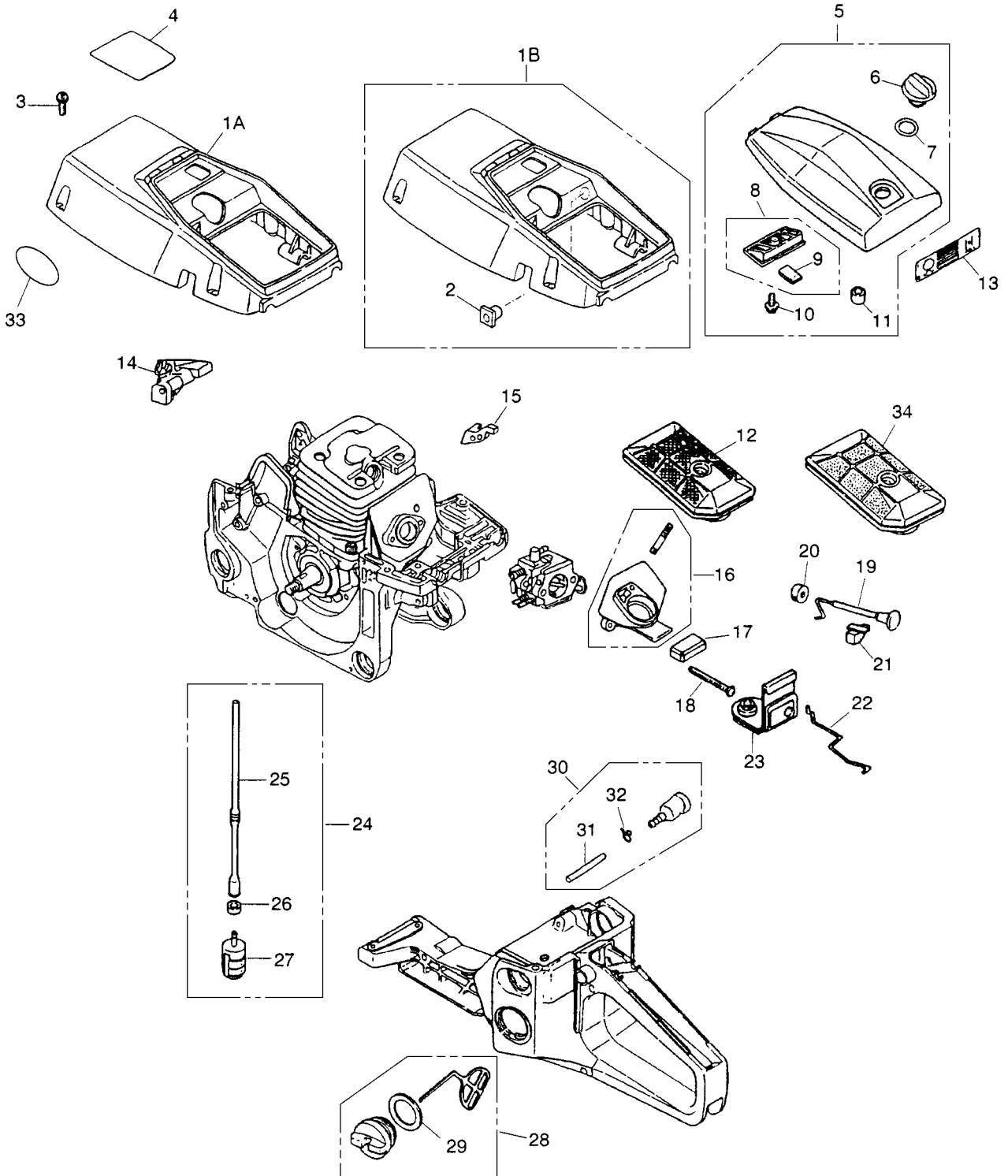


Fig.4 FUELING SYSTEMS

G451/G4500

Key#	PART NUMBER	DESCRIPTION	Q'TY /UNIT	NOTE
1A	2810-31115	Cylinder cover	1	
3	2670-14320	Screw M5x14	5	
4	2854-31513	Label	1	
5	2810-83305	Cleaner cover complete	1	
6	3356-83322	• Knob	1	
7	3388-83340	• Gasket, cap	1	
8	2810-83500	• Air cleaner complete	1	
9	2810-83520	•• Seal	1	
10	1600-33130	• Screw	1	
11	2810-83410	• Grommet, Air cleaner	1	
12	2810-83101	Air cleaner complete	1	
13	2813-31210	Label	1	
14	2880-82310	Guide (I)	1	
15	2880-82350	Guide (HL)	1	
16	2880-82102	Manifold complete	1	
17	2810-82141	Supporter	1	
18	2880-82210	Screw M5x52	1	
19	2880-82410	Choke rod	1	
20	2670-82421	Grommet, Choke	1	
21	2670-82430	Guide	1	
22	2880-82511	Throttle rod	1	
23	2810-82520	Grommet, throttle	1	
24	2810-34303	Fuel pipe assembly	1	
25	2810-34312	• Fuel pipe	1	
26	2810-34350	• Collar	1	
27	3302-85400	• Filter assembly	1	
28	2670-34401	Tank cap assembly	1	
29	2670-34430	• Gasket, Tank cap	1	
30	2670-34500	Breather Assembly	1	
31	3350-34540	• Pipe	1	
32	1260-85460	• Clip	1	
33	T2041-75810	Label	1	
34	2811-98501	Air cleaner complete	1	OP(Felt)

G5000

Key#	PART NUMBER	DESCRIPTION	Q'TY /UNIT	NOTE
1B	2880-31101	Cylinder cover	1	
2	2880-31120	• Nut	1	
3	2670-14320	Screw M5x14	5	
4	2854-31513	Label	1	
5	2810-83305	Cleaner cover complete	1	
6	3356-83322	• Knob	1	
7	3388-83340	• Gasket, cap	1	
8	2810-83500	• Air cleaner complete	1	
9	2810-83520	•• Seal	1	
10	1600-33130	• Screw	1	
11	2810-83410	• Grommet, Air cleaner	1	
12	2810-83101	Air cleaner complete	1	
13	2813-31210	Label	1	
14	2880-82310	Guide (I)	1	
15	2880-82350	Guide (HL)	1	
16	2880-82102	Manifold complete	1	
17	2810-82141	Supporter	1	
18	2880-82210	Screw M5x52	1	
19	2880-82410	Choke rod	1	
20	2670-82421	Grommet, Choke	1	
21	2670-82430	Guide	1	
22	2880-82511	Throttle rod	1	
23	2810-82520	Grommet, throttle	1	
24	2810-34303	Fuel pipe assembly	1	
25	2810-34312	• Fuel pipe	1	
26	2810-34350	• Collar	1	
27	3302-85400	• Filter assembly	1	
28	2670-34401	Tank cap assembly	1	
29	2670-34430	• Gasket, Tank cap	1	
30	2670-34500	Breather Assembly	1	
31	3350-34540	• Pipe	1	
32	1260-85460	• Clip	1	
33	T2041-75810	Label	1	
34	2811-98501	Air cleaner complete	1	OP(Felt)

Fig 5 OIL SYSTEM, CLUTCH

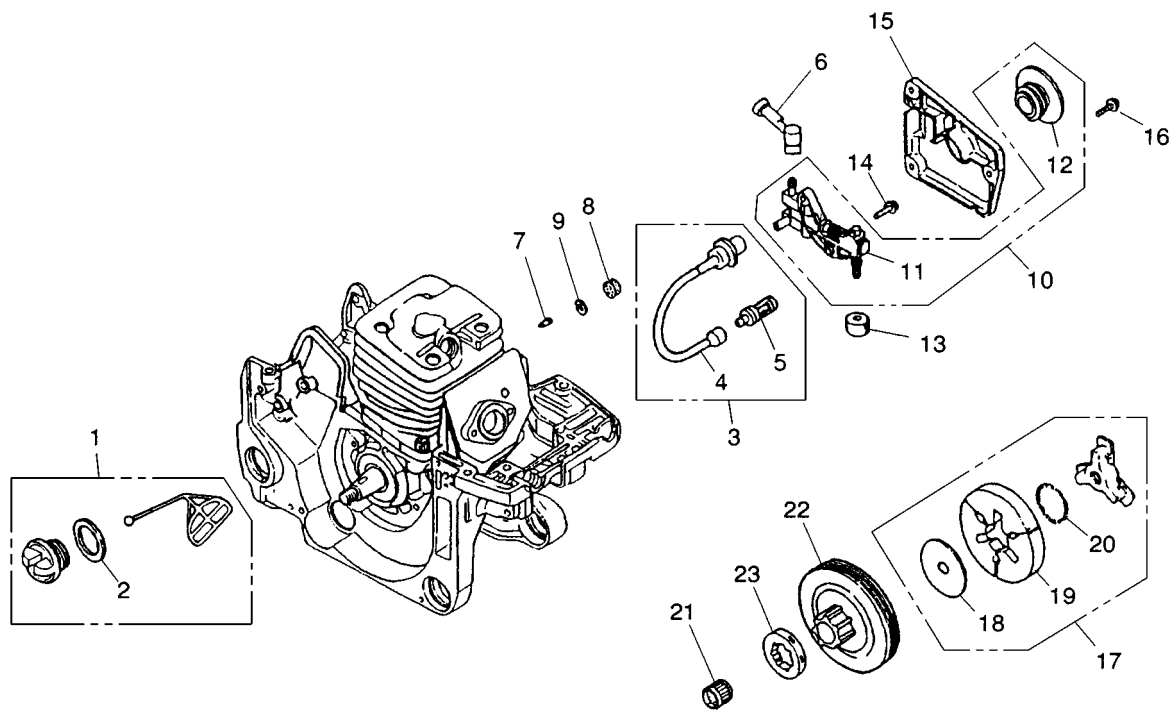


Fig 5 OIL SYSTEM, CLUTCH

G451/G4500

Key#	PART NUMBER	DESCRIPTION	Q'TY /UNIT	NOTE
1	2841-31801	Oil cap assembly	1	
2	2841-31820	• Gasket, cap	1	
3	2670-23101	Oil pipe compete	1	
4	2670-23120	• Pipe	1	
5	2670-23131	• Oil filter	1	
6	2670-23210	Pipe	1	
7	3330-23121	Valve	1	
8	3350-26220	Seal	1	
9	3350-26230	Clip	1	
10	2880-55100	Oil pump assembly	1	
11	2850-55110	• Oil pump	1	
12	2670-55120	• Worm Gear	1	
13	2670-55220	Seal	1	
14	2670-55410	Screw M4x14	2	
15	2670-55610	Pump cover	1	
16	2670-55410	Screw M4x14	3	
17	2670-51200	Clutch assembly	1	
18	2670-51210	• Plate	1	
19	3317-51220	• Clutch shoe	3	
20	3317-51231	• Spring	1	
21	2810-51310	Needle bearing 12x15x14	1	
22	2880-51110	Clutch drum	1	
23	3350-51121	Rim 325P	1	

G5000

Key#	PART NUMBER	DESCRIPTION	Q'TY /UNIT	NOTE
1	2841-31801	Oil cap assembly	1	
2	2841-31820	• Gasket, cap	1	
3	2670-23101	Oil pipe compete	1	
4	2670-23120	• Pipe	1	
5	2670-23131	• Oil filter	1	
6	2670-23210	Pipe	1	
7	3330-23121	Valve	1	
8	3350-26220	Seal	1	
9	3350-26230	Clip	1	
10	2880-55100	Oil pump assembly	1	
11	2850-55110	• Oil pump	1	
12	2670-55120	• Worm Gear	1	
13	2670-55220	Seal	1	
14	2670-55410	Screw M4x14	2	
15	2670-55610	Pump cover	1	
16	2670-55410	Screw M4x14	3	
17	2670-51200	Clutch assembly	1	
18	2670-51210	• Plate	1	
19	3317-51220	• Clutch shoe	3	
20	3317-51231	• Spring	1	
21	2810-51310	Needle bearing 12x15x14	1	
22	2880-51110	Clutch drum	1	
23	3350-51121	Rim 325P	1	

Fig.6 CARBURETOR

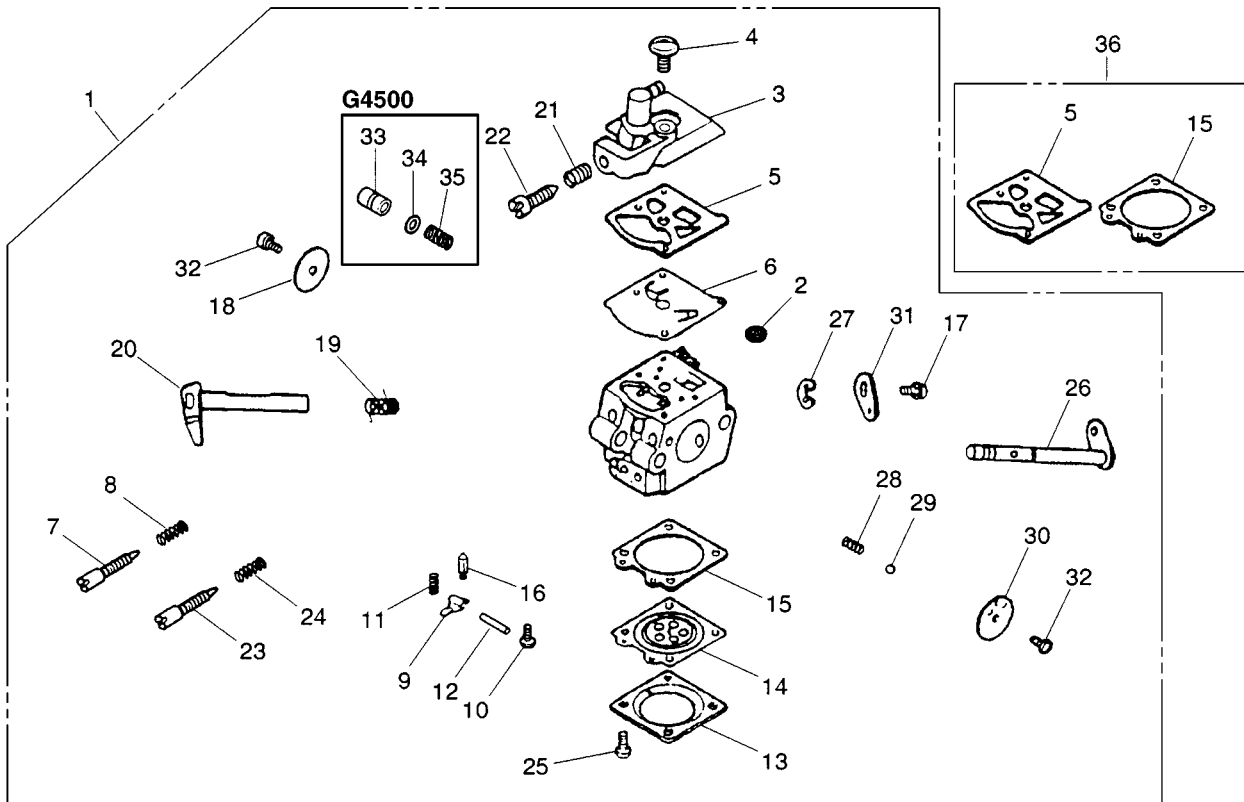


Fig.6 CARBURETOR

G451/G4500

Key#	PART NUMBER	DESCRIPTION	Q'TY /UNIT	NOTE
1	2810-81004	Carburetor assembly	1	WT-296
2	3306-81380	• Screen	1	
3	2810-81120	• Pump cover	1	
4	3310-81130	• Screw	1	
5	3304-81140	• Gasket, pump	1	
6	1172-81150	• Diaphragm, pump	1	
7	2810-81170	• L needle	1	
8	1491-81160	• L needle spring	1	
9	3310-81230	• Lever	1	
10	3310-81240	• Screw M lever pin	1	
11	1262-81270	• Spring	1	
12	3310-81250	• Pin, lever	1	
13	3310-81280	• Cover	1	
14	3310-81260	• Diaphragm assembly	1	
15	3310-81290	• Gasket	1	
16	3356-81310	• Valve, inlet	1	
17	3310-81360	• Screw, Shutter	1	
18	3356-81340	• Throttle valve	1	
19	2670-81410	• Throttle spring	1	
20	2810-81420	• Throttle shaft	1	
21	2630-81460	• Idle spring	1	
22	2670-81430	• Idle screw	1	
23	2880-81330	• H needle	1	
24	3080-81320	• H needle spring	1	
25	3310-81351	• Screw	4	
26	2880-81460	• Choke shaft	1	
27	1148-81390	• Ring	1	
28	3350-81350	• Choke spring	1	
29	3350-81220	• Boll	1	
30	2670-81450	• Choke valve	1	
31	2810-81440	• Throttle lever	1	
32	2880-81470	• Screw, valve	2	
33	2660-81510	• Pin	1	
34	2610-81520	• O ring	1	
35	2810-81350	• Screw	1	
36	3304-81910	Gasket Kit	1	

G5000

Key#	PART NUMBER	DESCRIPTION	Q'TY /UNIT	NOTE
1	2810-81001	Carburetor assembly	1	WT-281A
2	3306-81380	• Screen	1	
3	2810-81120	• Pump cover	1	
4	3310-81130	• Screw	1	
5	3304-81140	• Gasket, pump	1	
6	3304-81150	• Diaphragm, pump	1	
7	2810-81170	• L needle	1	
8	1491-81160	• L needle spring	1	
9	3310-81230	• Lever	1	
10	3310-81240	• Screw M lever pin	1	
11	1262-81270	• Spring	1	
12	3310-81250	• Pin, lever	1	
13	3310-81280	• Cover	1	
14	3310-81260	• Diaphragm assembly	1	
15	3310-81290	• Gasket	1	
16	3356-81310	• Valve, inlet	1	
17	3310-81360	• Screw, Shutter	1	
18	3356-81340	• Throttle valve	1	
19	2670-81410	• Throttle spring	1	
20	2880-81420	• Throttle shaft	1	
21	2630-81460	• Idle spring	1	
22	2670-81430	• Idle screw	1	
23	2880-81331	• H needle	1	
24	3080-81320	• H needle spring	1	
25	3310-81351	• Screw	4	
26	2880-81460	• Choke shaft	1	
27	1148-81390	• Ring	1	
28	3350-81350	• Choke spring	1	
29	3350-81220	• Boll	1	
30	2670-81450	• Choke valve	1	
31	2810-81440	• Throttle lever	1	
32	2880-81470	• Screw, valve	2	
36	3304-81910	Gasket Kit	1	

Fig.7 BREAKING SYSTEMS

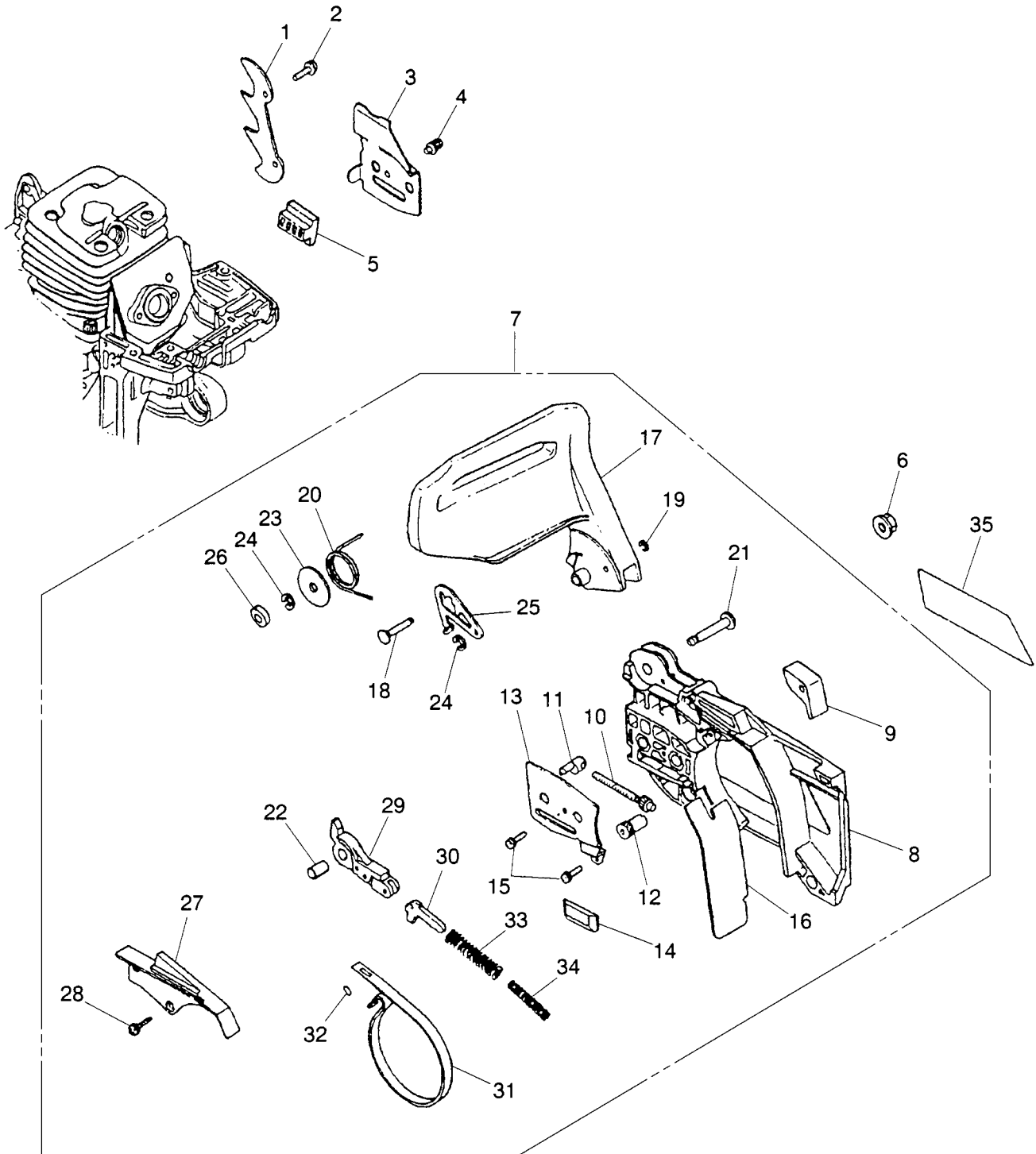


Fig.7 BREAKING SYSTEMS

G451/G4500

Key#	PART NUMBER	DESCRIPTION	Q'TY /UNIT	NOTE
1	2670-25310	Bumper	1	
2	2670-14320	Screw M5x14	2	
3	2810-25421	Plate	1	
4	2670-25430	Screw M4x10	1	
5	2670-25410	Guide	1	
6	3350-53410	Nut M8	2	
7	2881-54003	Chain cover assembly	1	
8	2671-53114	• Chain cover	1	
9	2880-53150	• Stopper	1	
10	2671-53210	• Screw	1	
11	2810-53221	• Nut	1	
12	2671-53230	• Gear	1	
13	2671-53240	• Plate	1	
14	2670-25410	• Guide	1	
15	2670-54630	• Screw M4x12 BT	2	
16	2671-53311	• Protector	1	
17	2880-54112	• Front guard	1	
18	2670-54121	• Pin	1	
19	0308-00030	• Ring	1	
20	2670-54210	• Spring	1	
21	2670-54220	• Pin	1	
22	2670-54231	• Spacer	1	
23	3238-15230	• Washer	1	
24	0308-00040	• Ring	2	
25	2810-54240	• Plate	1	
26	2810-54260	• Spacer	1	
27	2670-54621	• Cover	1	
28	2670-54630	• Screw M4x12 BT	3	
29	2670-54302	• Brake lever complete	1	
30	2670-54410	• Slide arm	1	
31	2670-54510	• Brake band	1	
32	3356-24140	• Roller	1	
33	2670-54610	• Brake spring	1	
34	2880-54650	• Return spring	1	
35	2811-53123	Label, Chain cover	1	

G5000

Key#	PART NUMBER	DESCRIPTION	Q'TY /UNIT	NOTE
1	2670-25310	Bumper	1	
2	2670-14320	Screw M5x14	2	
3	2810-25421	Plate	1	
4	2670-25430	Screw M4x10	1	
5	2670-25410	Guide	1	
6	3350-53410	Nut M8	2	
7	2881-54003	Chain cover assembly	1	
8	2671-53114	• Chain cover	1	
9	2880-53150	• Stopper	1	
10	2671-53210	• Screw	1	
11	2810-53221	• Nut	1	
12	2671-53230	• Gear	1	
13	2671-53240	• Plate	1	
14	2670-25410	• Guide	1	
15	2670-54630	• Screw M4x12 BT	2	
16	2671-53311	• Protector	1	
17	2880-54112	• Front guard	1	
18	2670-54121	• Pin	1	
19	0308-00030	• Ring	1	
20	2670-54210	• Spring	1	
21	2670-54220	• Pin	1	
22	2670-54231	• Spacer	1	
23	3238-15230	• Washer	1	
24	0308-00040	• Ring	2	
25	2810-54240	• Plate	1	
26	2810-54260	• Spacer	1	
27	2670-54621	• Cover	1	
28	2670-54630	• Screw M4x12 BT	3	
29	2670-54302	• Brake lever complete	1	
30	2670-54410	• Slide arm	1	
31	2670-54510	• Brake band	1	
32	3356-24140	• Roller	1	
33	2670-54610	• Brake spring	1	
34	2880-54650	• Return spring	1	
35	2881-53122	Label, Chain cover	1	

Fig.8 GUIDE BAR, SAW CHAIN, TOOLS

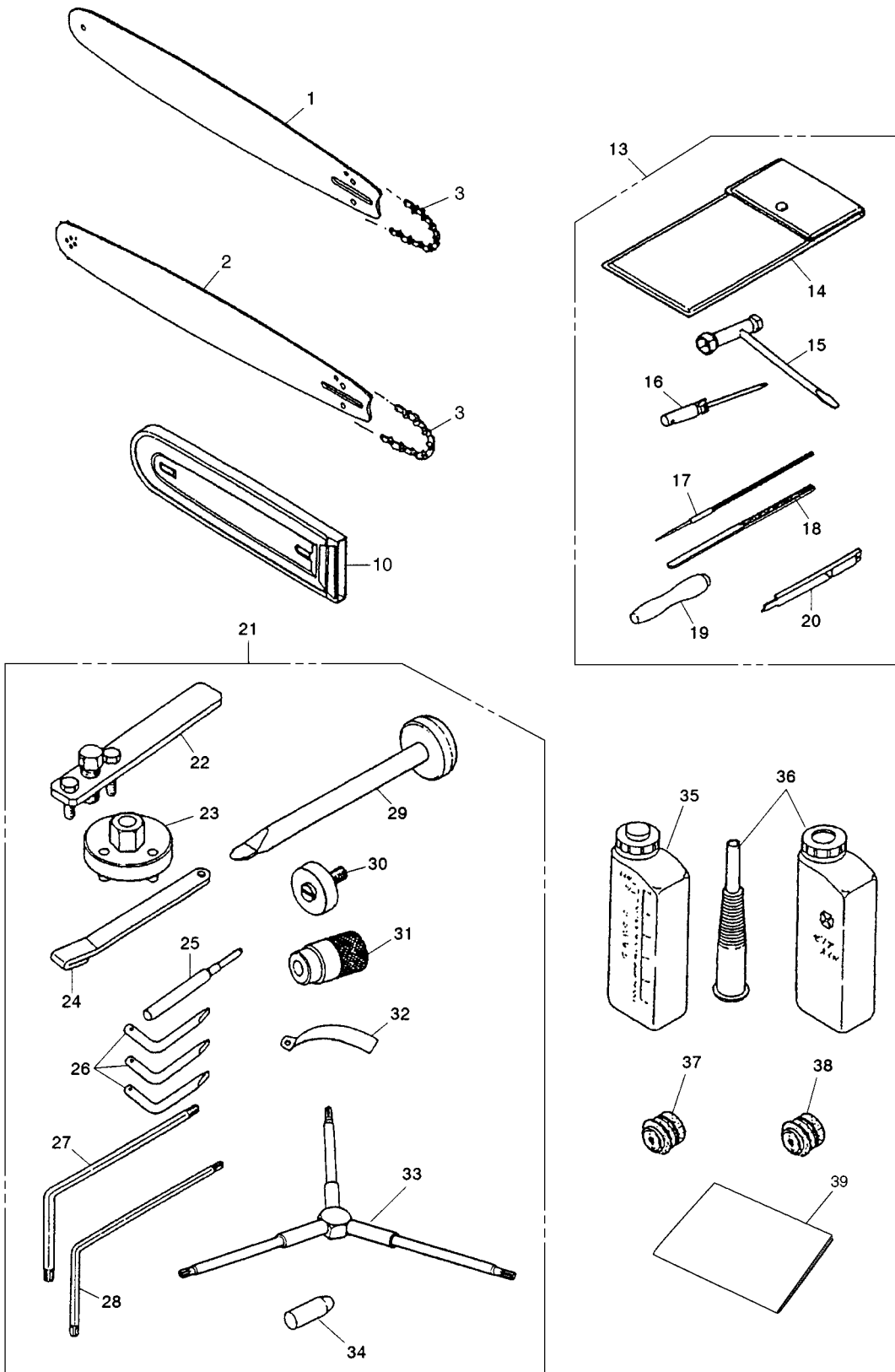


Fig.8 GUIDE BAR, SAW CHAIN, TOOLS

G451/G4500

Key#	PART NUMBER	DESCRIPTION	Q'TY /UNIT	NOTE
1	2974-52111	Hard nose bar 18"	1	G: .058"
2	3646-52113	Sprocket nose bar 18"	1	G: .058"
3	3646-52210	Chain 18"(21BP-72E)	1	
10	3356-97110	Protector	1	
13	2811-91000	Tool set	1	
14	3345-91110	• Bag	1	
15	3320-91140	• Plug wrench 13x19	1	
16	2670-91150	• Driver	1	
17	3320-97310	• File $\varnothing 4.8(3/16")$	1	
18	3317-91210	• File	1	
19	3381-91530	• Grip	1	
20	3310-91540	• Gauge	1	
21	2670-96002	Tool set	1	OP
22	2890-96100	• Puller Assembly (for rotor)	1	OP
23	2670-96210	• Wrench (for clutch)	1	OP
24	2670-96220	• Stopper (for piston)	1	OP
25	3350-96230	• Guide (for piston)	1	OP
26	2670-96240	• Wrench (for clutch ASS' Y)	3	OP
27	2670-96310	• Wrench (M5)	1	OP
28	2670-96320	• Wrench (M4)	1	OP
29	2670-96510	• Guide (for brake spring)	1	OP
30	3350-96620	• Guide	1	OP
31	2670-96660	• Holder	1	OP
32	3350-96240	• Gauge	1	OP
33	2850-96410	• Wrench	1	OP
34	2810-96710	• Guide (for brake spring)	1	OP
35	3317-91300	Fuel tank assembly	1	OP
36	3317-91400	Oil tank assembly	1	OP
39	2847-93110	Owner's manual	1	

G5000

Key#	PART NUMBER	DESCRIPTION	Q'TY /UNIT	NOTE
1	2974-52111	Hard nose bar 18"	1	G: .058"
2	3646-52113	Sprocket nose bar 18"	1	G: .058"
3	3646-52210	Chain 18"(21BP-72E)	1	
10	3356-97110	Protector	1	
13	2811-91000	Tool set	1	
14	3345-91110	• Bag	1	
15	3320-91140	• Plug wrench 13x19	1	
16	2670-91150	• Driver	1	
17	3320-97310	• File $\varnothing 4.8(3/16")$	1	
18	3317-91210	• File	1	
19	3381-91530	• Grip	1	
20	3310-91540	• Gauge	1	
21	2670-96002	Tool set	1	OP
22	2890-96100	• Puller Assembly (for rotor)	1	OP
23	2670-96210	• Wrench (for clutch)	1	OP
24	2670-96220	• Stopper (for piston)	1	OP
25	3350-96230	• Guide (for piston)	1	OP
26	2670-96240	• Wrench (for clutch ASS' Y)	3	OP
27	2670-96310	• Wrench (M5)	1	OP
28	2670-96320	• Wrench (M4)	1	OP
29	2670-96510	• Guide (for brake spring)	1	OP
30	3350-96620	• Guide	1	OP
31	2670-96660	• Holder	1	OP
32	3350-96240	• Gauge	1	OP
33	2850-96410	• Wrench	1	OP
34	2810-96710	• Guide (for brake spring)	1	OP
35	3317-91300	Fuel tank assembly	1	OP
36	3317-91400	Oil tank assembly	1	OP
37	2881-98710	Front damper	3	OP
38	2881-98720	Rear damper	2	OP
39	2847-93110	Owner's manual	1	



KOMATSU ZENOH CO.

1-9 Minamidai, Kawagoe, Saitama, 350-1192 Japan

PRINTED IN JAPAN

PRINTED ON RECYCLED PAPER
IMPRIMÉ SUR PAPIER RECYCLÉ
GEDRUCKT AUF RECYCLING PAPIER
STAMPATO SU CARTA RICICLATA
IMPRESO EN PAPEL RECICLADO

Free Manuals Download Website

<http://myh66.com>

<http://usermanuals.us>

<http://www.somanuals.com>

<http://www.4manuals.cc>

<http://www.manual-lib.com>

<http://www.404manual.com>

<http://www.luxmanual.com>

<http://aubethermostatmanual.com>

Golf course search by state

<http://golfingnear.com>

Email search by domain

<http://emailbydomain.com>

Auto manuals search

<http://auto.somanuals.com>

TV manuals search

<http://tv.somanuals.com>