



Model PRO 2000

Short Manual

RF Programmable Features :

Feature Selection	1 Chirp	2 Chirps	3 Chirps	4 Chirps	5Chirps	Default
<u>1st DoorL/UL</u>	1 Sec.	3.5 Sec.	1 Sec L, Dbl. U/L	Dbl L, 1 Sec U/L	Dbl L, Dbl U/L	1 Sec.
<u>2nd Accy Lock</u>	Auto Lock On	Auto Lock Off				Off
<u>3rd Accy. UL</u>	Auto UL Dr	Auto UL All	Auto UL Off			Off
<u>4th Passive Locks</u>	Passive	Active				Active
<u>5th Pass/Act Arm</u>	Passive Arm	Active Arm				Active
<u>6th Voltage Sense</u>	On	Off				Off
<u>7th Siren/Horn O/P</u>	Siren&Horn	Siren Only	Horn Only			S&H
<u>8th Horn Chirp</u>	10ms	16ms	30ms	40ms	50ms	16ms
<u>9th Override Method</u>	Custom Code	Valet				Valet
<u>10th Two Step Unlock</u>	On	Off				Off
<u>11th Chp. From Tx.</u>	On	Off				Off
<u>12th Keyless Or Alarm</u>	Keyless	Alarm				Keyless

To program these selectable features;

	Action	System Response
	Turn ignition on	No response
	Press and release the valet switch 3 times	1 Chirp - LED 1 flash
	Within 3 seconds, turn ignition Off	Short chirp, then long chirp
<u>First</u>	Then On	1 chirp = 1 second door locks
	Press transmitter Lock button to change	2 chirps = 3.5 second door locks
	Press transmitter Lock button to change	3 chirps = 1 sec. lock, dbl 1 sec. unlock
	Press transmitter Lock button to change	4 chirps = 1 sec. unlock, dbl 1 sec. lock
	Press transmitter Lock button to change	5 chirps = dbl 1 sec. lock, dbl 1 sec. unlock
	or	
<u>Second</u>	Press and release the valet switch	2 chirps = auto locks off
	Press transmitter Lock button to change	1 chirp = auto locks on
	or	
<u>Third</u>	Press and release the valet switch	3 chirps = auto unlock off
	Press transmitter Lock button to change	1 chirp = auto unlock drivers door only
	Press transmitter Lock button to change	2 chirps = auto unlock all doors
	or	
<u>Fourth</u>	Press and release the valet switch	2 chirps = active door locks
	Press transmitter Lock button to change	1 chirp = passive door locks
	or	
<u>Fifth</u>	Press and release the valet switch	2 chirps = active arming
	Press transmitter Lock button to change	1 chirp = passive arming
	or	
<u>Sixth</u>	Press and release the valet switch	2 chirps = voltage sense off
	Press transmitter Lock button to change	1 chirp = voltage sense on
	or	
<u>Seventh</u>	Press and release the valet switch	1 chirp = siren and horn output
	Press transmitter Lock button to change	2 chirps = siren output only
	Press transmitter lock button to change	3 chirps = horn output only
	or	
<u>Eight</u>	Press and release the valet switch	2 chirps = horn chirp output 16mS
	Press transmitter Lock button to change	3 chirps = horn chirp output 30mS
	Press transmitter Lock button to change	4 chirp = horn chirp output 40 mS
	Press transmitter Lock button to change	5 chirps = horn chirp output 50mS
	Press transmitter Lock button to change	1 chirp = horn chirp output 10 mS
	or	
<u>Ninth</u>	Press and release the valet switch	2 chirps = valet switch override operation
	Press transmitter Lock button to change	1 chirp = custom code override operation
	or	
<u>Tenth</u>	Press and release the valet switch	2 chirps = 2 step unlock off
	Press transmitter Lock button to change	1 chirp = 2 step unlock on
	or	
<u>Eleventh</u>	Press and release the valet switch	2 chirps = chirp delete from transmitter inactive
	Press transmitter Lock button to change	1 chirp = chirp delete from transmitter active
	or	
<u>Twelfth</u>	Press and release the valet switch	1 chirp = keyless entry mode
	Press transmitter Lock button to change	2 chirp = alarm mode
	or	
	Press and release the valet switch	Exit program mode
	or	
	Turn ignition key off	Exit program mode

Note: Once you enter the feature programming mode, do not allow more than 15 seconds to pass between steps, or the programming will be terminated.

Note: This system allows the transmitter to be programmed for single button lock/unlock or separate button lock/unlock. The receiver is set up as follows:

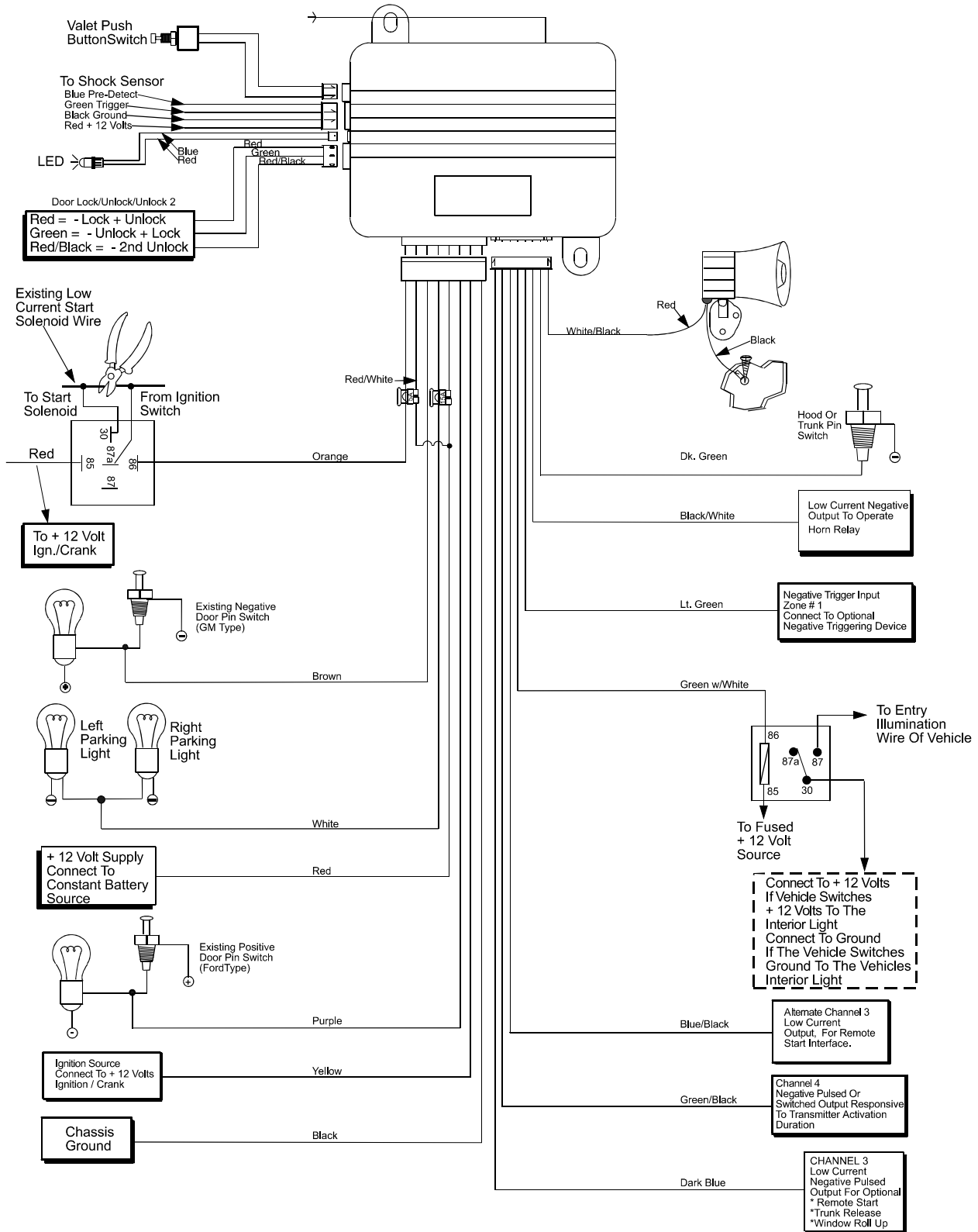
- Channel #1 = Lock/Unlock/Unlock 2 & Panic (Unlock only if no button is programmed to Ch.2)
- Channel #2 = If Programmed, Unlock/Unlock 2 & Panic
- Channel #3 = Channel 3 & Alternate Channel 3
- Channel #4 = Channel 4 Output
- Channel #5 = Channel 5 Output (If so Equipped)

During the program routine, if a transmitter button is programmed into receiver channel 2, then the unit will always have separate lock/unlock from that transmitter.

If during the program sequence receiver channel 1 is programmed and receiver channel 2 is skipped over, as indicated in the transmitted program guide, then the unit will operate as a single button lock/unlock unit from that transmitter.

It is possible to have one transmitter programmed for single button lock/unlock and one transmitter programmed for separate button lock/unlock if the customer so desires.

If you inadvertently incorrectly program the transmitter, please read the information on reprioritizing found in the transmitter programming guide.



Free Manuals Download Website

<http://myh66.com>

<http://usermanuals.us>

<http://www.somanuals.com>

<http://www.4manuals.cc>

<http://www.manual-lib.com>

<http://www.404manual.com>

<http://www.luxmanual.com>

<http://aubethermostatmanual.com>

Golf course search by state

<http://golfingnear.com>

Email search by domain

<http://emailbydomain.com>

Auto manuals search

<http://auto.somanuals.com>

TV manuals search

<http://tv.somanuals.com>