



4-port USB Hub with LAN Port  
H415  
User Guide

- Read the User Guide carefully before using.
- Please properly preserve for reading.

## Statement

Thank you for choosing Lenovo products.

Please read the information included in the product package thoroughly and carefully before use. Lenovo (Beijing) Ltd. WILL NOT BE LIABLE for any damages caused by your failure to follow the instructions herein or by any misoperation of this product due to your misunderstanding of the content of this guide. Lenovo (Beijing) Ltd. has emended and checked the document strictly, but we do not assure that there is no error or oversight. The pictures in this document are for your reference purpose only. If any of them are different from the actual product, please ignore the pictures.

In order to provide better services, Lenovo (Beijing) Ltd. reserves the right to improve and modify the description and the software program of this product.

Lenovo (Beijing) Ltd. will not be responsible for any data loss caused by malfunction of hardware and software, repair, and other situations; nor will we be responsible for associated indirect loss. Please backup your data properly.

The content of this Quick Start Guide is protected by the law of copyright. Without a written authorization from Lenovo (Beijing) Ltd., you cannot copy, excerpt, transmit through wired or wireless networks, or translate the User's Guide into any other language. The content of this User's Guide is subject to change without notice.

***lenovo, lenovo*** 联想, 联想 are either trademarks or registered trademarks of Lenovo (Beijing) Limited.

Microsoft and its identification, as well as Windows, Windows2000, Windows XP, Windows Vista, Windows 7, Windows Media are either trademarks or registered trademarks of Microsoft Corporation in the United States and/or other countries/territories.

Other products, brands and trade names mentioned in this User's Guide are either trademarks or registered trademarks of Lenovo or their respective owner.

Copyright© 2011 Lenovo (Beijing) Limited, all rights reserved.

## Note

Before using this information and the product it supports, read “Lenovo Limited Warranty and Notice” first.

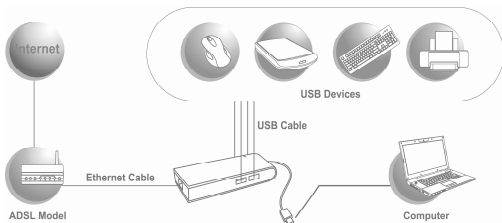
# Table of Contents

<b>1. Introduction .....</b>	<b>- 1 -</b>
Features .....	- 2 -
Package Contents .....	- 2 -
System Requirements .....	- 2 -
<b>2. Installation .....</b>	<b>- 3 -</b>
Hardware Connection.....	- 3 -
Driver Installation.....	- 4 -
On Mac OS X v10.5.....	- 7 -
Verifying the Driver Installation.....	- 11 -
On Mac OS X v10.5.....	- 12 -
<b>3. Specifications .....</b>	<b>- 13 -</b>
<b>4. Regulatory Compliance .....</b>	<b>- 14 -</b>
<b>5. Notice .....</b>	<b>- 16 -</b>



# 1. Introduction

4-port USB Hub with LAN Port is the USB Hub with Ethernet port for you easily connecting up to 4 USB 2.0 devices or LAN devices via RJ-45 port. It is compliant with USB 2.0 Specification and with the stylish appearance. It is the perfect solution for USB port expansion to your computer. such as Mouse, Scanner, Keyboard, or printers.



## Features

- Ethernet Port
- Easily Connects Up to 4 USB 2.0 Devices
- High Speed Transfer Rates when Using Multiple Devices
- Plug and Play

## Package Contents

- 4-port USB hub with LAN port x1
- CD (Driver & User's Manual) x1
- Flyer(Quick Installation Guide) x1

## System Requirements

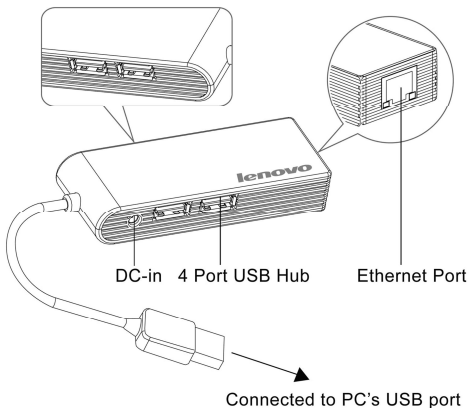
- PC with RJ-45 and USB port.
- Laptop with RJ-45 and USB port.
- One of the following operation systems: Windows XP, Windows Vista , Windows 7 & Mac OS X v10.1 or later.



## 2. Installation

### Hardware Connection

General instructions for installing the Lenovo 4-port USB hub with LAN port H415 are provided below. Since the design of system may vary, refer to your system's reference manual for further information, if needed.



## Driver Installation

### On Windows<sup>®</sup> XP/Windows<sup>®</sup> Vista/Windows<sup>®</sup> 7

**Caution: DO NOT** connect the Ethernet adapter to your computer before you install the provided driver. You will be instructed to do so later.

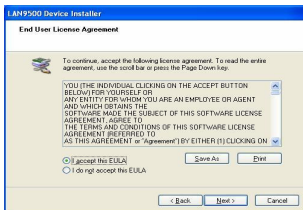
1. Insert the provided CD into your disc drive. Then locate and double-click the **setup.exe** file under **x:\Driver\Windows** where **x** is your disc drive letter.



2. When you see the screen below, please click **Next**.



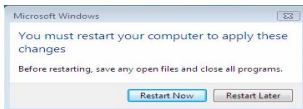
3. Please choose **“I accept this EULA”** and click **“Next”**.



4. Click Finish to complete Ethernet Driver.



Notice for Windows Vista<sup>®</sup> Users: If the Lenovo 4-port USB hub with LAN port Adapter does not work after completing driver installation, please restart you system.



5. Connect the 4-port USB hub with LAN Port Adapter's USB end to a free USB port of your computer. Then a pop-up message will appear in the notification area indicating the installation is completed.



\* Actual strings depend on your operation system. These screen shots are from Windows XP and Windows Vista , it might vary slightly for each operation system.

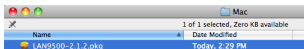
Now the installation is completed. You can connect the adapter to a network device by an Ethernet cable:

1. Connect an Ethernet cable to the Ethernet port on the adapter.
2. Connect the other end of the Ethernet cable to your network hub, switch or router.

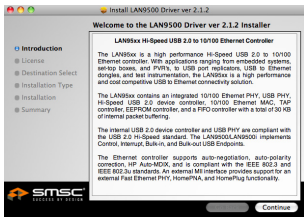
The Link LED should light up green to indicate a proper physical connection between the adapter and the network. If the Link LED doesn't light up, please verify the cable connections between all the network devices.

## On Mac OS X v10.5

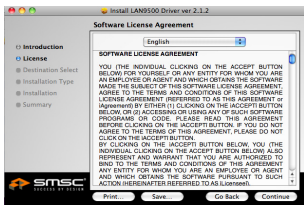
1. Insert the provided driver CD into your CD-ROM drive. Double-click the CD and navigate to the directory of **\Driver\Mac\LAN 9500-2.1.2.pkg**



2. When the **Install LAN 9500 Drivers** appears, please select **Continue**.



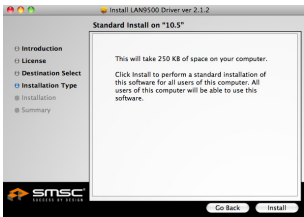
3. When the screen below appears, please read the **SOFTWARE LICENSE AGREEMENT** and click **Continue**.



4. After reading the agreement, please click **Agree**.



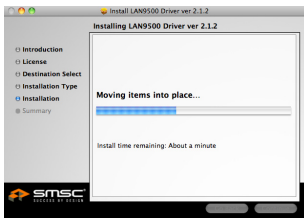
5. When the screen below appears, please click **Install** to perform a standard installation.



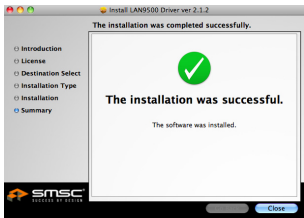
6. Please enter your password as prompted.



7. It will take for a while to install the driver.



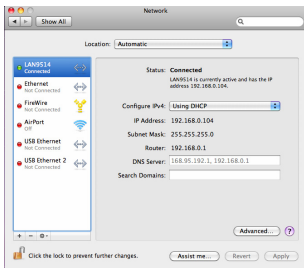
8. The installation was successful.



9. Connect the Ethernet adapter to a free USB port, you'll see the screen as below prompted and please select **Network Preferences**.



10. You will find that a new Ethernet network interface is available. It's usually named LAN9514.



\*Actual strings depend on your operation system. These screen shots are from Mac OS X v10.5 and might vary slightly for each operation system.

Now the installation is completed. You can connect the adapter to a network device by an Ethernet cable:

1. Connect an Ethernet cable to the Ethernet port on the adapter.
2. Connect the other end of the Ethernet cable to your network hub, switch or router.

The Link LED should light up green to indicate a proper physical connection between the adapter and the network. If the Link LED doesn't light up, please verify the cable connections between all the network devices.



## Verifying the Driver Installation

### On Windows<sup>®</sup> XP/Windows<sup>®</sup> Vista/Windows<sup>®</sup> 7

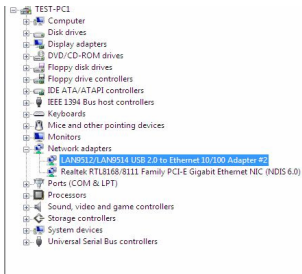
Once you finished the installation, you can open Windows **Device Manager** to verify if your Ethernet adapter is properly installed.

To access the **Device Manager**:

- On Windows<sup>®</sup> 7: Right-click **Computer** on the desktop and click **System Properties > Device Manager**.
- On Windows<sup>®</sup> Vista : Right-click **Computer** on the desktop and click **Properties > Device Manager**.
- On Windows<sup>®</sup> XP: Right-click My **Computer** on the desktop and click **Properties > (Hardware) > Device Manager**.

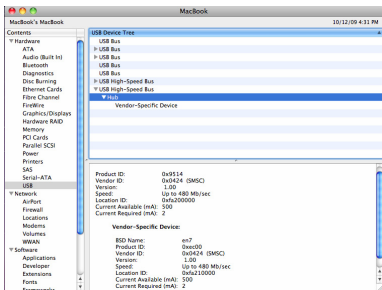
In the Network adapters group, an item named **LAN 9512/LAN 9514 USB 2.0 to Ethernet 10/100 Adapter** should be displayed.

If there is a question or exclamation mark next to that item, then the driver is not properly installed. Please delete the item, select the Delete the driver software for this device option (if provided), unplug the adapter from your computer and then repeat the installation steps.



## On Mac OS X v10.5

Once you finish the installation, you can open **GO > Utilities > System Profile > Hardware > USB >** to verify if your Ethernet adapter is properly installed.



### 3. Specifications

<b>USB</b>	Upstream port x 1 (USB Type A plug)
	Downstream port x 4 (USB Type A receptacles)
	Compliance : USB1.1 & USB 2.0
<b>LAN</b>	RJ-45 x 1 (Ethernet 10BASE-T/Fast Ethernet 100Base-TX port)
	Complies with the Full-duplex with flow control and Half-duplex with backpressure operation
<b>Power Mode</b>	BUS-Powered:5V 500mA; Self-Powered:5V 2.5A
<b>LED</b>	Green and Yellow LED for Ethernet Connection indication
<b>Housing</b>	Size (Lx W x H) : 94 x 35 x 17 mm
	Material : plastic (ABS)
	Weight : 46G
<b>Working Environment</b>	Operation temperature : 0 ~ 40 °C
	Storage temperature : -10 ~ 70 °C
	Certification : FCC, CE,CB

## 4. Regulatory Compliance

### Federal Communications Commission(FCC)

#### Declaration of Conformity

This equipment has been tested and found to comply with the limits for a Class B digital device, pursuant to Part 15 of the FCC Rules. These limits are designed to provide reasonable protection against harmful interference in a residential installation. This equipment generates, uses, and can radiate radio frequency energy and, if not installed and used in accordance with the instructions, may cause harmful interference to radio communications. However, there is no guarantee that interference will not occur in a particular installation. If this equipment does cause harmful interference to radio or television reception, which can be determined by turning the equipment off and on, the user is encouraged to try to correct the interference by one or more of the following measures:

- Reorient or relocate the receiving antenna.
- Increase the separation between the equipment and receiver.
- Connect the equipment into an outlet on a circuit different from that to which the receiver is connected.
- Consult an authorized dealer or service representative for help.

Lenovo is not responsible for any radio or television interference caused by using other than recommended cables and connectors or by unauthorized changes or modifications to this equipment. Unauthorized changes or modifications could void the user's authority to operate the equipment.

This device complies with Part 15 of the FCC Rules. Operation is subject to the following two conditions: (1) this device may not cause harmful interference, and (2) this device must accept any interference received, including interference that may cause undesired operation.

Responsible party:

Lenovo (United States) Incorporated  
1009 Think Place - Building One  
Morrisville, NC 27560  
Phone Number: 919-294-5900



**EU-EMC Directive (2004/108/EC) EN 55022 class B  
Statement of Compliance**



This product is in conformity with the protection requirements of EU Council Directive 2004/108/EC on the approximation of the laws of the Member States relating to electromagnetic compatibility. Lenovo cannot accept responsibility for any failure to satisfy the protection requirements resulting from a non-recommended modification of the product, including the installation of option cards from other manufacturers.

This product has been tested and found to comply with the limits for Class B Information Technology Equipment according to European Standard EN 55022. The limits for Class B equipment were derived for typical residential environments to provide reasonable protection against interference with licensed communication devices.

**European Union (EU) WEEE statement**

The WEEE mark applies only to countries within the European Union (EU) and Norway. Appliances are labeled in accordance with European Directive 2002/96/ EC concerning waste electrical and electronic equipment (WEEE). The Directive determines the



framework for the return and recycling of used appliances as applicable throughout the European Union. This label is applied to various products to indicate that the product is not to be thrown away, but rather reclaimed upon end of life per this Directive.

Users of electrical and electronic equipment (EEE) with the WEEE marking per Annex IV of the WEEE Directive must not dispose of end of life EEE as unsorted municipal waste, but use the collection framework available to them for the return, recycle, recovery of WEEE and minimize any potential effects of EEE on the environment and human health due to the presence of hazardous substances. For additional WEEE information, go to: <http://www.lenovo.com/lenovo/environment>.

## 5. Notice

- Must not let the USB Hub touch liquid or be placed in high temperature, high humidity environment.
- The USB Hub is powered by the USB interface of the host machine, when the USB Hub is connected with multiple devices, it is apt to have issues such as current and voltage instability, the connected devices can not be properly recognized, etc.
- Recommend that for high-power devices such as mobile hard disk, the devices be directly connected to the USB interface on the host machine in order to ensure stability.
- It will be improved performance with self-power adapter when connecting high-power device. In order to ensure our product safety, please make sure your power adapter specification.  
( Optional power adapter: DVE/DSA-15P-05 US)

## Free Manuals Download Website

<http://myh66.com>

<http://usermanuals.us>

<http://www.somanuals.com>

<http://www.4manuals.cc>

<http://www.manual-lib.com>

<http://www.404manual.com>

<http://www.luxmanual.com>

<http://aubethermostatmanual.com>

Golf course search by state

<http://golfingnear.com>

Email search by domain

<http://emailbydomain.com>

Auto manuals search

<http://auto.somanuals.com>

TV manuals search

<http://tv.somanuals.com>