

lenovo

Lenovo K900

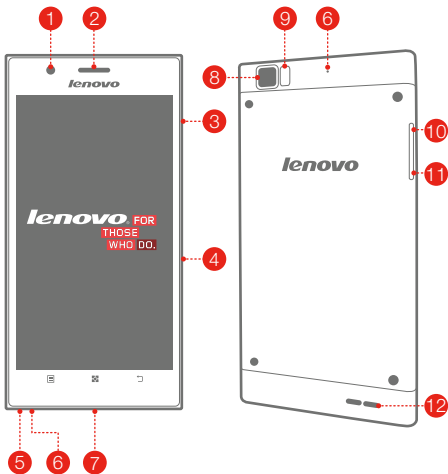
Quick Start Guide v1.0



For Android 4.2 Software.

Read this guide carefully before using your phone.

First glance



- | | | | | | |
|----|---------------|----|---------------|----|--------------|
| 1 | Front camera | 2 | Receiver | 3 | Power on/off |
| 4 | SIM card slot | 5 | Earphone jack | 6 | Microphone |
| 7 | Micro USB | 8 | Back camera | 9 | Flashlight |
| 10 | Volume up | 11 | Volume down | 12 | Speaker |

Technical specifications



Model and System

Model: Lenovo K900

System: Android 4.2



① Size and Weight

Height: 157mm Width: 78mm Depth: 6.9mm

Weight: 162g



CPU and Capacity

CPU: Intel dual-core Clover Trail+ (2.0 GHz)

Capacity: 16GB



Camera

Type: CMOS

Pixels: 13Mega (back)+ 2Mega (front)



Power and Battery

① Standby time: maximum 290 hours

Battery: 2500mAh (Built-in rechargeable lithium-ion battery)



Display

Size: 5.5-inch (diagonal)

Screen: Multi-Touch display

Resolution: FullHD 1080X1920

LCD type: IPS



Wireless Communication

② Bluetooth 3.0 WLAN 802.11a/b/g/n WCDMA, GSM

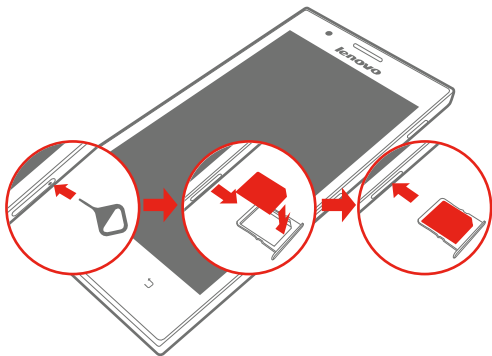


GPS

- ① Based on actual measurements.
- ② You must be within about 30 feet (10 meters) of a Bluetooth device for it to be connected to the phone.

Installing the SIM card

A SIM card provided by your carrier is required in order to use cellular services. Install the SIM card as shown.

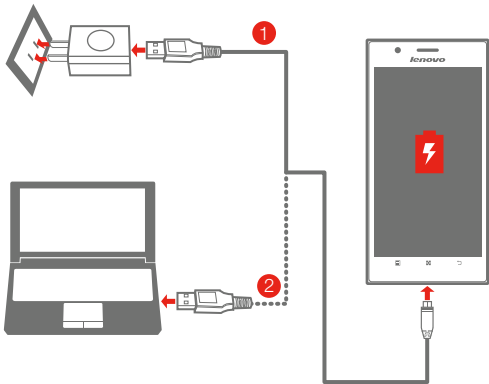


- Step 1.** Insert the SIM eject tool into the hole on the SIM card tray.
- Step 2.** Pull out the SIM card tray and place the SIM card in the tray.
- Step 3.** Carefully replace the tray.

ⓘ Only Micro SIM cards work with your phone.
DO NOT insert or remove the SIM card while your phone is turned on.
Doing so may permanently damage your SIM card or phone.


Charging the battery


Charge the battery as shown.



Method 1. Connect your phone to a power outlet using the included cable and USB power adapter. or

Method 2. Charge the battery using a computer.

 Low battery

 Fully charged

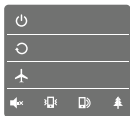
 Charging

 For more information about battery safety, see the *Important Product Information Guide*.

Turning the phone on and off



Power on/off



Power on: Press and hold the Power on/off button until the Lenovo logo appears.





Power off, Restart and switch mode: Press and hold the Power on/off button for a few seconds, then tap the **Power off, Restart** or other mode.


Screen lock/unlock



Lock: Press the Power on/off button.

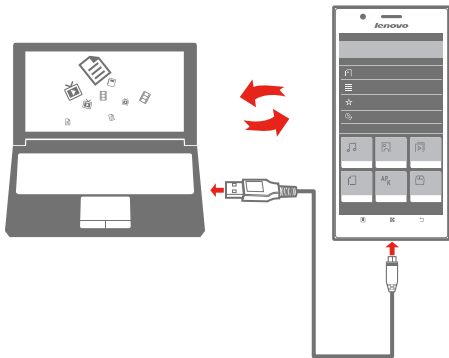
Unlock: Press the Power on/off button, then:

- drag the  slider to unlock.
- drag the  slider to open **Super Camera**.
- drag the  slider to make calls.
- drag the  slider to send and receive messages.

 When you're not using the phone you can lock it to turn off the display and save battery power.

Syncing the phone

Sync your phone with the computer as shown.



Step 1. Connect the phone to a USB 2.0 or 3.0 port on your computer. Then the screen shows the USB Access Mode.

Step 2. Set USB Access Mode options :

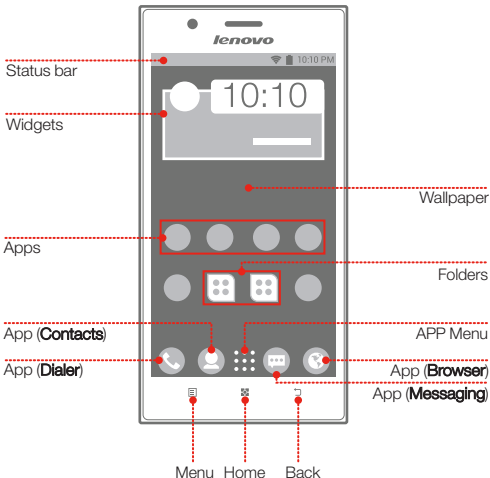
- Select **MTP**.
- Select **Mass Storage**, tap **Turn on USB storage**.
- Select **USB debug mode**.

Step 3. Transfer files between the phone and the computer.

Step 4. Manage the files by touching **FileBrowser**.

Customizing the phone

You can customize the layout of your Apps and Widgets on the Home screen.



- Rearrange Apps
- Organize Apps in folders
- Change the Wallpaper
- Create a new Home screen
- Move an App to another screen

Communicating with people

Calling



Make calls

Touch  > **Dialer**.

Speed Dial

Touch  > **Dialer** > **InfoCenter** > **Speed Dial**

Contacts



Manage contacts

Touch  > **Contacts**.

Import/Export contacts

Touch  > **Contacts** > **InfoCenter** > **Contacts Manage**

Messaging



Send/Receive messages

Touch  > **Messaging**.

Import/Export messages

Touch  > **Messaging** > **InfoCenter** > **SMS Settings**

Backup and restore



Backup information to SD card

Touch  > **Backup&Restore** > **Backup User Data**

Restore information from SD card

Touch  > **Backup&Restore** >

BACKED UP RECORD LIST

 This function requires support from your wireless carrier.

Surfing on the Internet

Setting wireless network



Make sure the wireless network is available.
Touch  > **Settings** > **ALL SETTINGS** > **WLAN, Data connection**

Webpages







Touch  > **Browser**.

- View a webpage: Tap the address field, enter the URL, then tap **Go**.
- Close a webpage: Tap , then tap **X** by the page.
- Save bookmark: Tap , then tap **OK**.

Email



Touch  > **Email**.

- Set an account: Before you use it the first time, you need to set an account.
- Search email: Tap , enter the keywords, then tap .
- Send email: Tap , enter **To**, **Subject** and the email body, then tap .

Personal hotspot

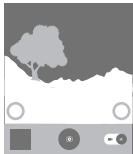


Touch  > **Personal hotspot**.

Share your phone's 3G internet connection to your computer and other devices by enabling this function.


Photos and videos

Taking photos and videos



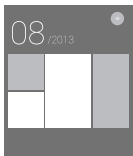
Touch  > **Super Camera**.

To quickly open **Super Camera** when the phone is locked, swipe .

Take a photo: Tap  or press either Volume up button.

Record a video: Switch  to , tap  to start, then tap  to finish.

Viewing photos and videos



Touch  > **Super Gallery**.

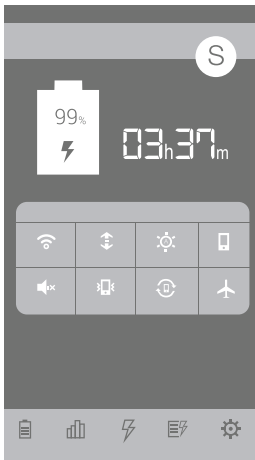
You can zoom in/out a photo by double-tapping or moving your two fingers apart/together while touching the screen.

Taking screenshot







Press and hold the Power on/off button and the Volume down button at the same time. The screenshot is added to your **Super Gallery**.

Saving battery power

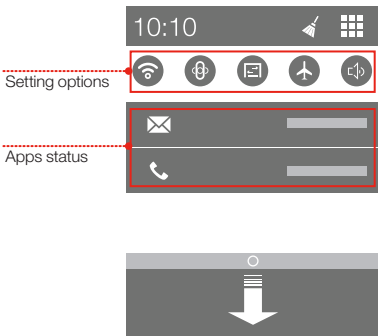
Use Lenovo power to save battery power and maintain device performance.



Touch  > **Lenovo Power**.



- Tap  to see the battery usage and adjust the options of the power mode.
- Tap  to see the power usage of Apps in a list.
- Tap  when charging the battery to extend battery life.
- Tap  to change the power mode.
- Tap  and  to adjust the Settings.

Notifications panel



Open the notifications panel

Drag down from the Status bar, you can view the current Apps status and the Setting options.

- Tap  to see all the Setting options.
- Tap  to clean the Apps status information.
- Tap the App to open it.

Close the notifications panel

Drag up the bar that is on the bottom of the screen.

Legal notices

Lenovo and the Lenovo logo are trademarks of Lenovo in the United States, other countries, or both.

Other company, product, or service names may be trademarks or service marks of others.

First Edition (October 2013)

© Copyright Lenovo 2013.

LIMITED AND RESTRICTED RIGHTS NOTICE: If data or software is delivered pursuant a General Services Administration "GSA" contract, use, reproduction, or disclosure is subject to restrictions set forth in Contract No. GS-35F-05925.



SP49A45782
Printed in China

Free Manuals Download Website

<http://myh66.com>

<http://usermanuals.us>

<http://www.somanuals.com>

<http://www.4manuals.cc>

<http://www.manual-lib.com>

<http://www.404manual.com>

<http://www.luxmanual.com>

<http://aubethermostatmanual.com>

Golf course search by state

<http://golfingnear.com>

Email search by domain

<http://emailbydomain.com>

Auto manuals search

<http://auto.somanuals.com>

TV manuals search

<http://tv.somanuals.com>