

Motorola ComCenter Users Guide

Introduction:

Welcome to Motorola's world of personal wireless accessories. The **Motorola ComCenter Manager** software and related cables are designed to enhance your experience with compatible Motorola phones. This combination lets you stay connected to your data, wherever you go.

All Motorola wireless products are designed and manufactured to meet Motorola's rigorous specifications and world-class quality standards. We are confident that you will find this accessory to be a convenient way to keep connected! Thank you for choosing a Motorola product!

This guide is intended to provide all the information you will need to make the most of your Palm™ personal digital assistant and compatible Motorola phone. It has been designed for you to easily learn the features of the **Motorola ComCenter Manager** software in the shortest amount of time.

1.0 Welcome:

The **Motorola ComCenter Manager** software application and associated cables provide the Palm™ owner with direct access to many features of your compatible Motorola phone, including Internet and Email access.

With the provided cable attached, you will be able to use the contact information in your Palm™ to dial your phone as well. You can even upload contacts into your phone directly from your Palm™.

With the Motorola ComCenter, you have:

- A phonebook integrated with Palm™'s built-in Address Book application.
- A *QuickDial* one-touch dialing.
- Logging of all outgoing calls dialed from your Palm™.
- Direct control over the phone's Send, End, and numerical keys.
- Ability to upload a phonebook entry from your Palm™ into your phone.
- Ability to change languages between English, Spanish, and French.

2.0 Installation:

2.1 Install

In order to install the **Motorola ComCenter Manager** application, you must first delete any previous versions of this software from your Palm™ before running the installation program. See section 2.2 for uninstalling previously installed versions of **Motorola ComCenter Manager** from your Palm™ device.

1. Place your Palm™ personal digital assistant into the HotSync™ cradle.
2. Insert the **Motorola ComCenter Manager** CD into the CD ROM drive on your PC. The installation should begin automatically.
3. Select the location to copy the program files.
4. Select the appropriate Palm™ user for the program.
5. Click Done.
6. Press the HotSync™ button on your cradle.
7. The installation process is now complete.

2.2 Uninstall

To delete the application:

1. Press the Palm™ Launcher button (the House icon next to the graffiti area).
2. Open the menu.
3. Select **Delete...**
4. Select ComCenter.
5. Press Delete... button.

Deleting the **ComCenter** application will delete its preference settings.

ComCenter creates custom database files for storing information. These databases do not get deleted with the main application. This allows for easy upgrading without losing settings for *QuickDial* entries, or call log entries.

The databases for **ComCenter** are labeled CCCallLogDB and CCQuickDialDB.

To delete any of **ComCenter's** databases:

1. Press the Palm™ Launcher button (the House icon next to the graffiti area).
2. Open the menu.
3. Select **Delete...**
4. Select the database you wish to delete.
5. Press Delete... button.

3.0 How-to:

3.1 Main Screen

Figure 1 shows the main screen that will appear on your Palm™ when the program is running.

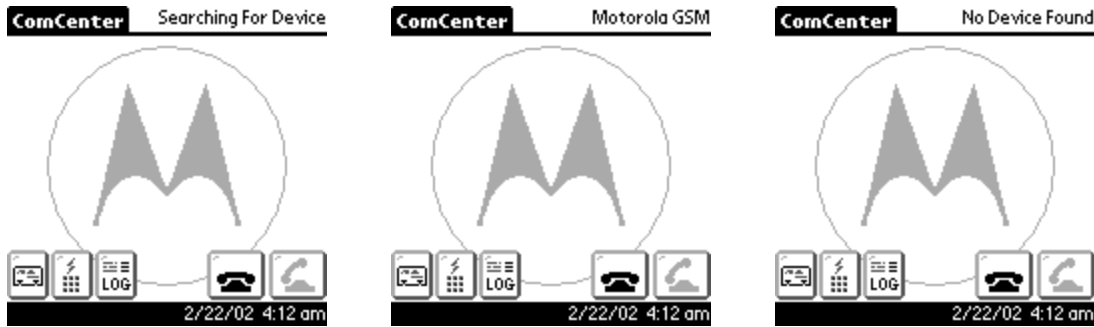


Figure 1.

The first time you run **ComCenter**, you will be greeted with the QuickTips screen. It shows helpful tips on how to use **ComCenter**. If you wish to prevent QuickTips from appearing each time you run **ComCenter**, check the Don't Show box.

ComCenter will search for a valid **Motorola** phone when first started. When the phone is connected to the Palm™ via the appropriate cable, and powered on, the phone will display **Motorola [GSM/CDMA/TDMA]**. If the phone is not connected or powered on, **ComCenter** will display **No Device Found**.

After **ComCenter** finds a valid phone, it will automatically create a Connection profile ("Motorola P2K phone") and a Network profile ("MotorolaNet"). If you change phones, ComCenter will automatically detect this, and make updates as necessary to the Connection profile. In order to make a data call for the first time, you will need to configure the Network Profile for your Internet Service Provider (See section 3.6.2).

Motorola ComCenter

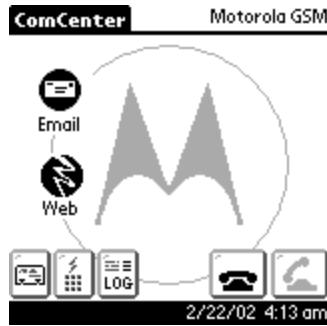





Figure 2.

If you have configured **ComCenter** with an Email and Web application to launch (see section 3.6), the application's icons will be shown in the left hand side of the screen (figure 2). Pressing one of the icons will launch the assigned application. If you wish to return to **ComCenter** after launching one of those applications, you must use the Palm™ Launcher button (the House button next to the Graffiti area) to relaunch **ComCenter**.

The three buttons in the lower left corner of the display are as follows:

1.  Phonebook screen
2.  *QuickDial* screen
3.  Call Log screen

Pressing any of those buttons will bring up the appropriate screen (see sections 3.3 to 3.5 for further details of each screen).

The two buttons in the lower right corner of the display are linked to the phone's End and Send buttons.

The current date and time are displayed in the lower right corner.

3.2 Keypad Screen

Figure 3 shows the keypad screen. To display this screen, press either (up or down) hard scroll button on your Palm™. To remove the screen, press either hard scroll button again. You can also bring this screen up by using the Graffiti area to write the phone number.



Figure 3.

The buttons on this screen are linked to the keypad on your phone.

Pressing the back arrow deletes one digit.

Pressing the CLR button is the same as pressing the End button on your phone.

As you press the digits, the numbers will be displayed above the keypad. Hiding the keypad will not clear the digits already entered. Pressing *Send*, *CLR*, or opening the *Phonebook*, *QuickDial*, or *Call Log* screen will clear the digits entered.

While in this screen, you can enter in digits by pressing the numbers on the screen, or by writing the digits in the graffiti area. You can even SPELL the phone number out (eg. 555-help) and the **ComCenter** will automatically convert the letters to numbers for you!

3.3 Phonebook Screen


Pressing the  button will open the *Phonebook* screen (Figure 4).



Figure 4.

The **Motorola ComCenter Manager Phonebook** accesses the Palm's built-in Address Book database. This allows a single Address Book entry with multiple numbers to be accessible as individual numbers, eliminating the need to manually search for a specific number. Each phone number type is listed next to the corresponding name. As shown in Figure 4, Albert's work and home number are listed as two separate entries.

The upper right corner displays the current selection's phone number.

The *Phonebook* has many different ways of filtering out entries.


You can:


1. Filter by Category (same as the Address Book)
2. Filter by last name range (right hand side of list)
3. Filter by phone number type (bottom row of list)
4. Spell out the last name using Graffiti (the letters entered are shown in the left side of the date/time bar)


Note: If you have the Address Book preferences set to sort by Company first, ComCenter will automatically sort by last name before startup, and re-sort by company when quitting. This will cause a slight delay when starting and ending the program.

You can scroll one entry at a time by pressing the Palm™ scroll buttons, or a page at a time by pressing the arrows in the list.

Any entry that is assigned a *QuickDial* button will have it's *QuickDial* slot number displayed next to the name in brackets (eg. [2]). This allows you to see those entries that can be speed dialed.

Once an entry is selected (highlighted), pressing  button will dial the number. The number may contain letters, numbers, #, *, or commas only. If the phone number contains any letters, it will automatically be converted to the equivalent keypad number.

You can also upload the selected entry to your phone by pressing the  button. The entry will preserve the name, number, and number type in your phone.

Press the  button to go back to the main screen, or press the other buttons to go to the *QuickDial* or *Call Log* screen.

3.4 QuickDial Screen (Speed Dial)


Pressing the  button will open the *QuickDial* screen (Figure 5).



Figure 5.

The *QuickDial* screen is where you can do one-touch dialing. There are 40 *QuickDial* entries in total, 8 on 5 pages. You can select a page by selecting the 1-5 button on the right, or pressing up and down on the Palm™ scroll buttons.

To assign a number to a *QuickDial* slot, press any empty slot. This will bring up the edit dialog (Figure 6).



Figure 6.

A new entry will have the Position drop-down disabled (gray arrow).

The Cancel button will exit the dialog without saving the entry.

You can enter in a name and valid telephone number into the appropriate fields or assign a phonebook entry into the *QuickDial* slot by pressing the **Assign...** button.

Motorola ComCenter



Figure 7.

You will notice the same features as found in the *Phonebook* screen, with the exception of being unable to filter by category or last name. You can however, filter by phone type or spelling of the last name.

Once you have selected an entry, click Ok.



Figure 8.

The name and number of the phonebook entry will populate the fields. You can edit them before pressing **Done**.

Pressing *Done* will prompt the software to ask if you want to save the changes. Once the changes have been saved, the new *QuickDial* entry will be visible.

If you wish to edit an entry, you must go into *Edit Mode* by pressing the **Edit** button (Figure 9).



Figure 9.

This will again bring up the edit dialog (Figure 6), and the *Position* dropdown will now be enabled.

You can change a *QuickDial* position by selecting the new slot number with the dropdown list. If you move an entry into an occupied slot, it will ask if you want to swap, replace, or cancel the edit.

The **Cancel** button will now be shown as **Delete**. Pressing this button will delete the *QuickDial* entry.

3.5 Call Log Screen


Pressing the  button will open the *Call Log* screen (Figure 10). Any calls made from **Motorola ComCenter Manager** will be logged and displayed on this screen. It will not list any calls made directly from your phone.



Figure 10.

You can select an entry and redial the number by pressing the Send button.

All calls show the date and time it was made, as well as the number dialed in the upper right corner. If a number was manually dialed via the keypad, the name will not be shown.

You can scroll through the list with the Palm™ scroll buttons, or with the arrows in the list.

3.6 Menu options

You can get to the menus by pressing the Palm™ *Menu* button on the left of the Graffiti area. If you are running Palm™ OS v3.5 or newer, you can tap the application title (“ComCenter”) to display the menus.

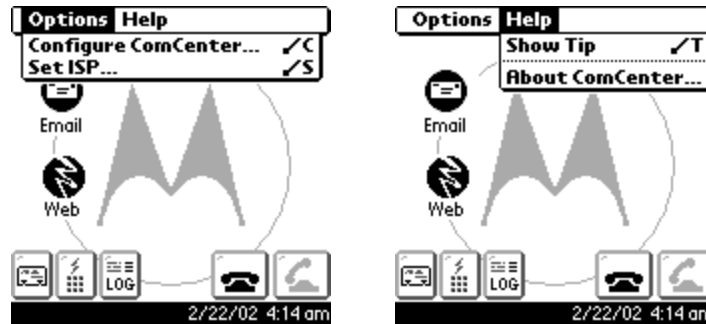


Figure 11.

3.6.1 Configure ComCenter...

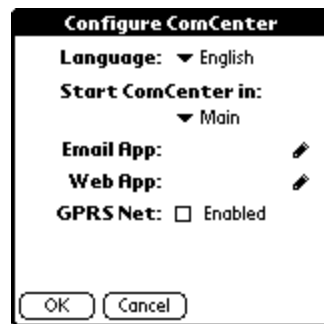


Figure 11a.



Figure 11b.

Language – Lets you set the default language of **ComCenter** (*note: this does not affect the language configuration of the Palm™, or any other applications that might reside on your device*).

Start ComCenter in – Allows the user to select which screen to display when the **ComCenter** application is launched.

Email App – The application selected for Email. Click the pointer icon (☞) to choose an application. When an application is chosen, its icon will be visible in **ComCenter’s** main screen (see Figure 2).

Web App – The application selected for Web Browsing. Click the pointer icon (☞) to choose an application.

GPRS Net– Visible for GSM/GPRS phones only. If selected, Figure 11b will be displayed to request the service provider’s APN IP address.

APN – When using a GSM/GPRS phone, an APN value is required, which should be provided by your cellular carrier. This information is required for **ComCenter** to automatically configure your Network settings.

3.6.2 Setting up your ISP (Internet Service Provider)...



Figure 12.

This is the Network panel screen in the Palm™ Prefs application. This screen will not be translated into the language set for ComCenter, as it is not a part of this application.

This screen lets you configure your ISP information.

Service – The name of this ISP configuration

User Name – The login name for your ISP.

Password – The password for your ISP.

Connection – Set to “**Motorola P2K Phone**”. **ComCenter** will automatically reset this setting if changed.

Phone – The dialup number of your ISP.

Pressing **Done** will return to the **ComCenter** application.

Leave the settings in **Details...** to their defaults.

You can establish a network connection by pressing **Connect** or start any net enabled application.

Note: During a data call, you will not be able to receive any incoming calls. Instead, the caller will either hear the busy signal or be automatically directed to your voicemail, depending on your service.

While in a data call, if the phone drops the call, or is hung up, the Palm™ data session must be manually disconnected by going into the Network panel of the Prefs application. Click the Disconnect button for the ISP to notify the Palm™ to close the connection.

While you are using the phone to connect to an ISP, ComCenter will not be able to simultaneously control the phone. When you disconnect from the Internet, ComCenter will again enable you to control the phone.

3.6.3 Show Tip...



Figure 13.

Shows some helpful tips on using the **Motorola ComCenter** application.

3.6.4 About ComCenter

Display the version and copyright information.

Free Manuals Download Website

<http://myh66.com>

<http://usermanuals.us>

<http://www.somanuals.com>

<http://www.4manuals.cc>

<http://www.manual-lib.com>

<http://www.404manual.com>

<http://www.luxmanual.com>

<http://aubethermostatmanual.com>

Golf course search by state

<http://golfingnear.com>

Email search by domain

<http://emailbydomain.com>

Auto manuals search

<http://auto.somanuals.com>

TV manuals search

<http://tv.somanuals.com>