



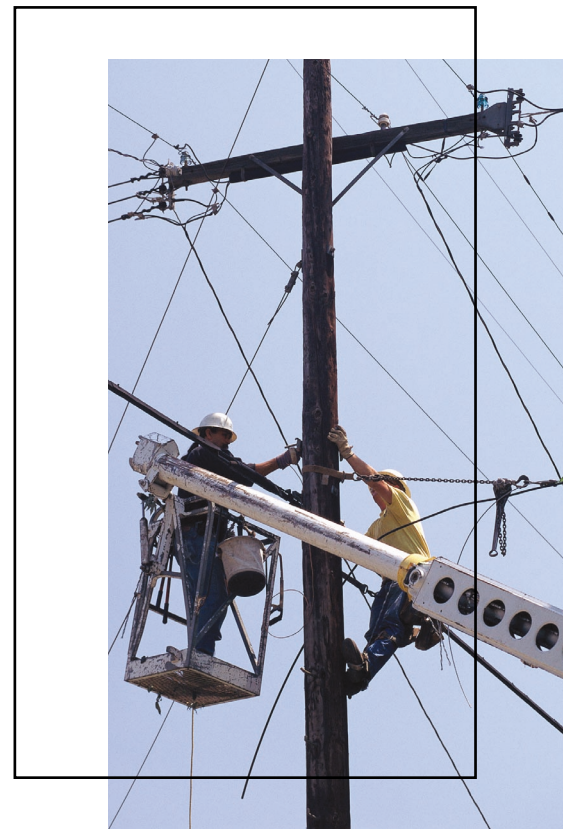
MOTOROLA
intelligence everywhere™



Professional Series
Two-Way Radios and Accessories

CDM1550·LS VHF
CDM1550·LS+ UHF
200 MHz
700 MHz

*TAKING TWO-WAY COMMUNICATION FARTHER
THAN EVER.*



The Intelligent Radio – So Advanced, It Practically Thinks for You

High-performing features combined with versatile trunking capabilities make the CDM1550•LS and CDM1550•LS+ two-way radios the smart choice to keep mobile work teams performing at their best. The CDM1550•LS and CDM1550•LS+ radios incorporate LTR® trunking capabilities – offering you wider calling range, faster channel access, greater privacy, and higher user and talkgroup capacity. The CDM1550•LS+ also offers innovative PassPort® trunking. Ideal for users with growing communication needs, PassPort includes all the advantages of LTR trunking plus:

- Wider Area Coverage, Seamless Roaming – Automatic switching between networked PassPort sites lets you maintain constant communication over long distances without touching a button
- Exceptional Audio Quality – Received Signal Strength Indicator (RSSI) communication technology utilizes the strongest signal available, giving you optimal sound quality
- Superior System Access – Automatic site registration/deregistration can reduce busy channels and enhance system efficiency
- Efficient Channel Expansion – Direct frequency assignment allows you to add channels and sites over the air without taking radios out of service
- Electronic Serial Number Protection – Helps keep system resources available by preventing unauthorized radio cloning

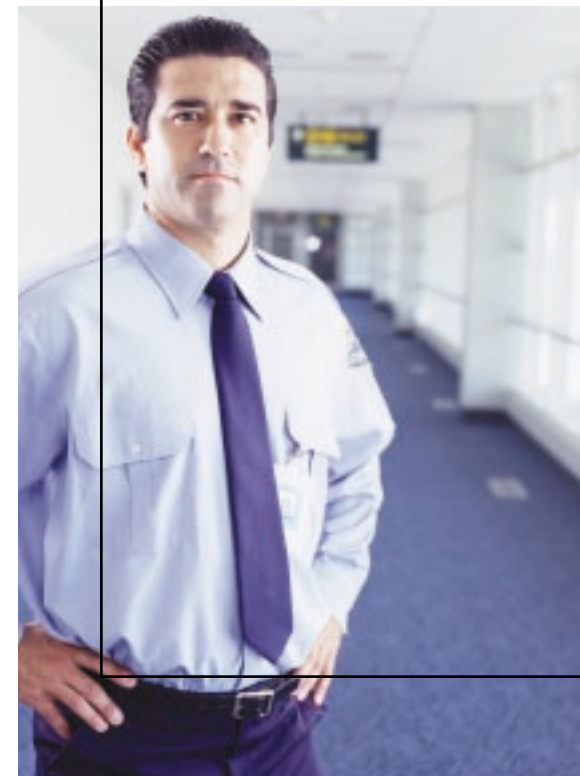
Motorola Two-Way Radios: The Choice of Professionals

Success in today's constantly changing marketplace depends on knowing – and making – the right moves. To stay on top, you have to continually expand your horizons, always keeping one step ahead of your competition. You also need communication tools that deliver immediate, reliable access to the people and information you need to get the job done. And that's exactly what two-way radio gives you.

At the touch of a button, two-way radio lets you talk with one, ten, or more people instantly – providing the individual and team communication you need to maximize productivity and meet your customers' demands. And when you choose a Motorola radio, you know you're getting a product designed to meet your requirements as a professional.



CDM1550-LS
with LTR® Trunking



CDM1550-LS+

CDM1550-LS and CDM1550-LS+ Radio Features

**15 PassPort and/or LTR Zones (16 talkgroups each)*
16 or 160 Conventional Channels***

RSSI Indicator

Displays signal strength level

Large Control Buttons

Easy management of menu, navigation, and exit functions

Conventional Talkaround

Unit-to-unit communications, bypassing the repeater

Home Channel Revert

Automatic, one-button return to a preferred talkgroup or channel

User-Defined Lists

Change scan, phone, and call lists on the fly

Voice Storage

Record important messages or personal memos

Telephone Interconnect

Place and receive phone calls with the radio

MDC1200 Signaling (Encode/Decode) Features on Conventional and LTR Zones*

- Caller ID – Identifies incoming callers
- Selective Call – Lets you call a specific group or individual
- Call Alert – Notifies individual users that you're trying to reach them
- Radio Check – Tells you whether another user's radio is activated
- Message – Allows you to send and receive pre-programmed messages

Quick Call II™ on Conventional Zones*

Send and receive information via tone or digital signals

Roam Request*

Optional manual initiation of roaming function

Horn and Lights Activation

Notifies you of calls when you're away from your vehicle

Additional CDM1550-LS and CDM1550-LS+ Mobile Features

- 12.5/25 kHz switchable channel spacing*
- Remote mountable control head
- Data capable
- Operates on LTR or LTR and PassPort systems*

* Only available on certain models. Check with your Motorola Authorized Dealer for availability.

Exceptional Functionality and Convenience

The CDM1550•LS and the CDM1550•LS+ mobiles utilize the latest in two-way technology to deliver extraordinary performance and ease-of-use, including:

- Compact, Ergonomic Design to give you optimal mounting flexibility and durability
- 14-Character Alphanumeric Display with User-Friendly Icons to help make the radio's information easy to understand
- Convenient Menu Navigation so you can program scan, phone, and call lists in virtually no time

- Four Programmable Buttons that you can customize and label for quick access to your favorite features
- Selectable Scanning Capabilities that allow you to define the transmissions your radio monitors
- Motorola's Unique X-Pand™ Audio Enhancement combined with a powerful front-projecting speaker can help reduce background noise and improve sound quality

The CDM1550•LS+ mobile can also be programmed with both LTR and PassPort trunking systems – allowing a smooth transition when your business requires a more extensive calling area for maximum communication efficiency. The radio operates on 16 conventional channels as well.

Motorola – A Name You Know and Trust

For more than 65 years, Motorola has been an undisputed leader in creating state-of-the-art wireless communications for people like you. The CDM1550•LS and the CDM1550•LS+ mobiles uphold that superior standard. What's more, each radio is backed by a limited two-year* warranty on parts and labor. So when you select the CDM1550•LS or the CDM1550•LS+ mobile, you'll experience the same exceptional quality you've come to expect from all Motorola products.

*Radio accessories are covered by Motorola's one-year accessories warranty.

CDM1550•LS CDM1550•LS+

Radio Accessories

Motorola Original™ accessories provide an easy way to turn your CDM1550•LS or CDM1550•LS+ mobile radio into a custom communication solution to fit your business requirements—maximizing on-the-job productivity and efficiency for mobile work teams and individuals.

Talk However You Want



Enhanced Keypad Microphone— AARMN4026

You can dial phone numbers on this microphone's full keypad, or customize its three programmable buttons with any control head features.

Visor Microphone—AARMN4027

Attach this microphone to your visor or hat for hands-free operation of your radio (must be used with an external PTT).

Push Button Push-to-Talk—RLN4857

Simply depress the button to talk with other users.

Foot Switch Push-to-Talk—RLN4856

A handy foot switch provides hands-free PTT functionality.

Gooseneck Mount

Push-to-Talk—RLN4858

This PTT mounts conveniently on your steering wheel column for control that's right at your fingertips.



Telephone Style Handset—AAREX4617

Conduct private conversations on your radio quietly and discreetly.

Get Your Message Across

13-Watt Speaker—RSN4001

Powerful sound control allows you to increase your radio's volume output when working in noisy environments.



Take It With You

High-Profile Mount—GLN7317

Offers a space-saving option for vehicles where every inch counts.

Key Lock Mount—RLN4779

Securely mounts and locks radio in your vehicle to protect against theft.

Power It Up

1-25 Watt Power Supply—HPN4002

For use with low power radios. Provides power for using mobile radio on a desktop.

25-60 Watt Power Supply—HPN4001

For use with low power radios. Provides power for using mobile radio on a desktop.

Enhance Your Calling Range

200 MHz Wave Roof Mount

Antenna—HKAD4001

Mini U 746-794 MHz Wave Rod

Antenna—HAF4012

450-476 MHz 1/4 Wave Roof Mount

Antenna—HAE4003



CDM1550-LS and CDM1550-LS+ Radio Specifications

GENERAL SPECIFICATIONS

	VHF	200 MHz	UHF	700 MHz
Channel Capacity				
Trunking zone capacity	15	15	15	15
Trunking talkgroup capacity (per zone)	16	16	16	16
Conventional channel capacity	160	16	16	16
Typical RF Output				
VHF Low Power	1-25W			
VHF High Power	25-45W			
200 MHz	1-25W			
UHF Low Power	1-25W			
UHF High Power	25-40W			
700 MHz	1-15W			
Frequency				
VHF	136-174 MHz			
200 MHz	217-218 MHz, 219-222 MHz			
UHF	403-470 MHz, 450-512 MHz			
700 MHz	746-747 MHz, 762-764 MHz, 776-777 MHz, 792-794 MHz			
Dimension (H x W x L)				
VHF/UHF Low Power and 200 MHz	2.34" x 7.05" x 7.32" (60 mm x 179 mm x 186 mm)			
VHF/UHF High Power and 700 MHz	2.34" x 7.05" x 7.79" (60 mm x 179 mm x 198 mm)			
Weight				
VHF/UHF Low Power and 200 MHz	3.15 lbs. (1.43 kg)			
VHF/UHF High Power and 700 MHz	3.5 lbs. (1.59 kg)			
Current Drain				
	VHF	200	UHF	700
Standby	.3 A	.3 A	.3 A	.3 A
Rx @ rated, external 8 ohm	1.5 A	1.5 A	1.5 A	1.5 A
Transmit	7 A @ 25W 13.5 A @ 45W	7 A @ 25W	8 A @ 25W 13.5 A @ 40W	7 A @ 15W
FCC Description				
	AZ492FT3796 (25W, 136-174 MHz)			
	AZ492FT3795 (45W, 136-174 MHz)			
	AB299FT3081 (25W, 217-218/219-222 MHz)			
	AZ492FT4835 (25W, 403-470 MHz)			
	AZ492FT4830 (40W, 403-470 MHz)			
	AZ492FT4829 (25W, 450-512 MHz)			
	AZ492FT4836 (40W, 450-512 MHz)			
	AB299FT5001 (15W, 746-747/762-764/776-777/792-794 MHz)			

MOBILE MILITARY STANDARDS 810 C, D, & E

Applicable MIL-STD	810C		810D		810E	
	Methods	Procedures	Methods	Procedures	Methods	Procedures
Low Pressure	500.1	1	500.2	2	500.3	2
High Temperature	501.1	1,2	501.2	1,2	501.3	1,2
Low Temperature	502.1	2	502.2	1,2	502.3	1,2
Temperature Shock	503.1	1	503.2	1	503.3	1
Solar Radiation	505.1	1	505.2	1	505.3	1
Rain	506.1	2	506.2	2	506.3	2
Humidity	507.1	2	507.2	2,3	507.3	3
Salt Fog	509.1	1	509.2	1	509.3	1
Dust	510.1	1	510.2	1	510.3	1
Vibration	514.2	8,10	514.3	1	514.4	1
Shock	516.2	1,5	516.3	1	516.4	1

ENVIRONMENTAL SPECIFICATIONS

Operating Temperature	-30 to +60° C
Storage Temperature	-55 to +85° C
Thermal Shock	-40 to +85° C
Humidity	95% RH @ 8 Hr.
ESD	IEC 801-2 KV
Water Intrusion	IPX4
Packing Test	Impact Test

RECEIVER SPECIFICATIONS

	VHF	200 MHz	UHF	700 MHz
Frequencies				
	136-174 MHz	217-218 MHz, 219-220 MHz, 220-222 MHz	403-470 MHz, 450-512 MHz	746-747 MHz, 762-764 MHz
Channel Spacing	12.5/20/25 kHz	12.5 kHz	12.5/20/25 kHz	12.5 kHz
Frequency Stability (-30° C to +60° C, +25° Ref.)	± 2.5 ppm	± 2.5 ppm	± 2.5 ppm	± 1.5 ppm
Sensitivity (12 dB SINAD) EIA	0.3 µV 0.23 µV typical	0.30 µV (0.25 µV typical)	0.3 µV 0.23 µV typical	0.35 µV (0.3 µV typical)
Intermodulation	75 dB @ 12.5 kHz 78 dB @ 25 kHz	75dB	75 dB @ 12.5 kHz 75 dB @ 25 kHz	75dB
Adjacent Channel Selectivity	65 dB @ 12.5 kHz 80 dB @ 25 kHz	65 dB (TIA 603) 40 dB (TIA 603-A)	65 dB @ 12.5 kHz 75 dB @ 25 kHz	65 dB (TIA 603) 40 dB (TIA 603-A)
Spurious Rejection	75 dB @ 12.5 kHz 80 dB @ 25 kHz	75 dB	70 dB @ 12.5 kHz 75 dB @ 25 kHz	75 dB
Rated Audio (External audio w/4 ohm speaker)	3W Internal 13W External	3W Internal 13W External	3W Internal 13W External	3W Internal 13W External
Audio Distortion @ Rated Audio	3% typical	3% typical	3% typical	3% typical
Hum and Noise	-40 dB 12.5 kHz -45 dB 25 kHz	-40 dB	-40 dB 12.5 kHz -45 dB 25 kHz	-40 dB
Audio Response	TIA603 & ETS300 & CEPT 84 Annex 2	+1 to -3 dB	TIA603 & ETS300 & CEPT 84 Annex 2	+1 to -3 dB
Conducted Spurious Emission FCC Part 15	-57dBm < 1 GHz -47dBm > 1GHz	-57dBm < 1 GHz -47 dBm > 1GHz	-57dBm < 1 GHz -47dBm > 1 GHz	-57dBm < 1 GHz -47 dBm > 1GHz

TRANSMITTER SPECIFICATIONS

	VHF	200 MHz	UHF	700 MHz
Frequencies				
	136-174 MHz	217-218 MHz (Talkaround), 219-220 MHz, 220-221 MHz (Talkaround), 221-222 MHz	403-470 MHz, 450-512 MHz	776-777 MHz, 792-794 MHz, 746-747 MHz (Talkaround), 762-764 MHz (Talkaround)
Power Output	1-25 W or 25-45 W	1-25 W	1-25 W or 25-40 W	1-15 W
Frequency Stability (-30° C to +60° C, +25° Ref.)	± 2.5 ppm	± 2.5 ppm	± 5 ppm @ 25 kHz ± 2.5 ppm @ 12.5 kHz	± 1.5 ppm
Modulation Limiting	± 2.5 @ 12.5 kHz ± 4.0 @ 20 kHz ± 5.0 @ 25 kHz	± 2.5 kHz	± 2.5 @ 12.5 kHz ± 4.0 @ 20 kHz ± 5.0 @ 25 kHz	± 2.5 kHz
Conducted and Radiated Emissions	-36 dBm < 1 GHz -30 dBm > 1 GHz	-16 dBm	-36 dBm < 1 GHz -30 dBm > 1 GHz	-16 dBm (except -40 dBm from 1559 to 1610 MHz)
Channel Spacing	12.5/20/25 kHz	12.5 kHz	12.5/20/25 kHz	12.5 kHz
FM Hum & Noise	-40 dB 12.5 kHz -45 dB 25 kHz	-40 dB typical	-40 dB typical	-40 dB typical
Adjacent Channel Power	-60 dB @ 12.5 kHz -70 dB @ 25 kHz	-60 dB	-60 dB @ 12.5 kHz -70 dB @ 25 kHz	-60 dB
Audio Response	TIA 603 & ETS300 & CEPT 84 Annex 2	+1 to -3 dB	TIA 603 & ETS300 & CEPT 84 Annex 2	+1 to -3 dB
Audio Distortion	3% typical	3% typical	3% typical	3% typical
FM Modulation Designator	11K0F3E (12.5 kHz) 16K0F3E (25 kHz)	11K0F3E	11K0F3E (12.5 kHz) 16K0F3E (25 kHz)	11K0F3E
Adjacent Channel Coupled Power	N/A	N/A	N/A	Complies with 47 CFR 27.53 (d) (1)

For more information, please contact:



MOTOROLA

MOTOROLA and the Stylized M Logo are registered in the US Patent and Trademark Office. All other product or service names are the property of their respective owners.

© Motorola, Inc. 2002.

www.motorola.com/cgiss

MD-CDM1550LS-03

Free Manuals Download Website

<http://myh66.com>

<http://usermanuals.us>

<http://www.somanuals.com>

<http://www.4manuals.cc>

<http://www.manual-lib.com>

<http://www.404manual.com>

<http://www.luxmanual.com>

<http://aubethermostatmanual.com>

Golf course search by state

<http://golfingnear.com>

Email search by domain

<http://emailbydomain.com>

Auto manuals search

<http://auto.somanuals.com>

TV manuals search

<http://tv.somanuals.com>