

Dear customer

Thank you for purchasing this product. For optimum performance and safety, please read these instructions carefully.

HT730: indicates features applicable to SC-HT730 only.

HT733: SC-HT733 only.

HT930: SC-HT930 only.

HT933: SC-HT933 only.

- These operating instructions are applicable to models SC-HT730, SC-HT733, SC-HT930 and SC-HT933 for a variety of regions.
- Unless otherwise indicated, illustrations in these operating instructions are of SC-HT730 for U.S.A. and Canada.
- Operations in these instructions are described mainly with the remote control, but you can perform the operations on the main unit if the controls are the same.

System	SC-HT730	SC-HT733	SC-HT930	SC-HT933
Main unit	SA-HT730	SA-HT733	SA-HT930	SA-HT933
Front speakers	SB-FS730	SB-FS730	SB-FS930	SB-PF920
Center speaker	SB-PC730	SB-PC730	SB-PC930	SB-PC920
Surround speakers	SB-FS731	SB-FS731	SB-FS931	SB-PS920
Active subwoofer	SB-WA730	SB-WA733	SB-WA930	SB-WA933

CAUTION!

THIS PRODUCT UTILIZES A LASER.
USE OF CONTROLS OR ADJUSTMENTS OR PERFORMANCE OF PROCEDURES OTHER THAN THOSE SPECIFIED HEREIN MAY RESULT IN HAZARDOUS RADIATION EXPOSURE.
DO NOT OPEN COVERS AND DO NOT REPAIR YOURSELF. REFER SERVICING TO QUALIFIED PERSONNEL.

WARNING:

TO REDUCE THE RISK OF FIRE, ELECTRIC SHOCK OR PRODUCT DAMAGE, DO NOT EXPOSE THIS APPARATUS TO RAIN, MOISTURE, DRIPPING OR SPLASHING AND THAT NO OBJECTS FILLED WITH LIQUIDS, SUCH AS VASES, SHALL BE PLACED ON THE APPARATUS.

CAUTION!

- DO NOT INSTALL OR PLACE THIS UNIT IN A BOOKCASE, BUILT-IN CABINET OR IN ANOTHER CONFINED SPACE. ENSURE THE UNIT IS WELL VENTILATED. TO PREVENT RISK OF ELECTRIC SHOCK OR FIRE HAZARD DUE TO OVERHEATING, ENSURE THAT CURTAINS AND ANY OTHER MATERIALS DO NOT OBSTRUCT THE VENTILATION VENTS.
- DO NOT OBSTRUCT THE UNIT'S VENTILATION OPENINGS WITH NEWSPAPERS, TABLECLOTHS, CURTAINS, AND SIMILAR ITEMS.
- DO NOT PLACE SOURCES OF NAKED FLAMES, SUCH AS LIGHTED CANDLES, ON THE UNIT.
- DISPOSE OF BATTERIES IN AN ENVIRONMENTALLY FRIENDLY MANNER.

This product may receive radio interference caused by mobile telephones during use. If such interference is apparent, please increase separation between the product and the mobile telephone.

The socket outlet shall be installed near the equipment and easily accessible or the mains plug or an appliance coupler shall remain readily operable.

For units with PX printed on the outer packaging
THIS UNIT IS INTENDED FOR USE IN MODERATE CLIMATES.

For units with PX printed on the outer packaging
CAUTION:
The AC voltage is different according to the area.
Be sure to set the proper voltage in your area before use.
(For details, please refer to page 12.)

THE FOLLOWING APPLIES ONLY IN THE U.S.A.

FCC Note:

This equipment has been tested and found to comply with the limits for a Class B digital device, pursuant to Part 15 of the FCC Rules. These limits are designed to provide reasonable protection against harmful interference in a residential installation. This equipment generates, uses and can radiate radio frequency energy and, if not installed and used in accordance with the instructions, may cause harmful interference to radio communications. However, there is no guarantee that interference will not occur in a particular installation. If this equipment does cause harmful interference to radio or television reception, which can be determined by turning the equipment off and on, the user is encouraged to try to correct the interference by one or more of the following measures:

- Reorient or relocate the receiving antenna.
- Increase the separation between the equipment and receiver.
- Connect the equipment into an outlet on a circuit different from that to which the receiver is connected.
- Consult the dealer or an experienced radio/TV technician for help.

Any unauthorized changes or modifications to this equipment would void the user's authority to operate this device.

This device complies with Part 15 of the FCC Rules. Operation is subject to the following two conditions: (1) This device may not cause harmful interference, and (2) this device must accept any interference received, including interference that may cause undesired operation.

Responsible Party:
Panasonic Corporation of North America
One Panasonic Way
Secaucus, NJ 07094
Telephone No.: 1-800-211-7262

THE FOLLOWING APPLIES ONLY IN THE U.S.A. AND CANADA



CAUTION
RISK OF ELECTRIC SHOCK
DO NOT OPEN



CAUTION: TO REDUCE THE RISK OF ELECTRIC SHOCK, DO NOT REMOVE SCREWS. NO USER-SERVICEABLE PARTS INSIDE. REFER SERVICING TO QUALIFIED SERVICE PERSONNEL.



The lightning flash with arrowhead symbol, within an equilateral triangle, is intended to alert the user to the presence of uninsulated "dangerous voltage" within the product's enclosure that may be of sufficient magnitude to constitute a risk of electric shock to persons.



The exclamation point within an equilateral triangle is intended to alert the user to the presence of important operating and maintenance (servicing) instructions in the literature accompanying the appliance.

Simple setup

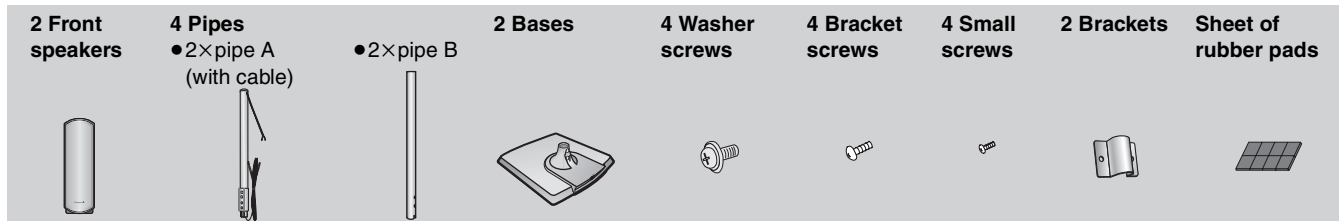
STEP 1 Front speaker assembly

The supplied stands are specially designed for attachment to Panasonic SB-FS730, SB-FS930 or SB-PF920 front speakers. Use only as indicated in this setup.

Preparation

- To prevent damage or scratches, lay down a soft cloth and perform assembly on it.
- For assembly, use a Phillips-head screwdriver.
- Make sure you have all the indicated components before starting assembly, setup, and connection.
- There is no difference between the right and left speakers and pipes.

HT730 **HT733**

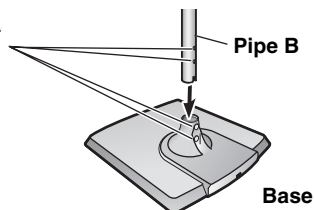


You can use the front speakers without assembling with the stands. In this case, attach the included rubber pads to the base of the speakers. This prevents vibration from causing the speakers to move or fall over. Use 3 or 4 pads per speaker.

1 Attach the pipes to the bases.

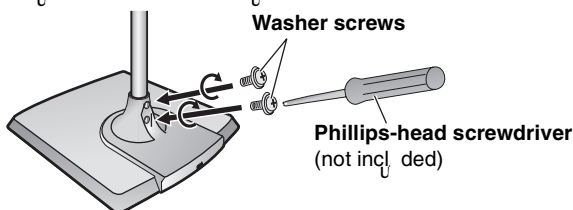
1 Insert pipe B.

Match these holes when you insert the pipe.



2 Secure pipe B to the base.

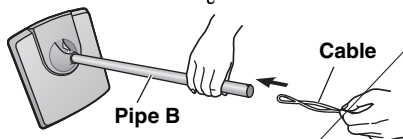
Ensure the screws are securely fastened.



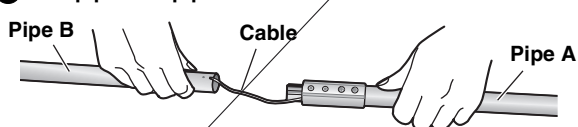
2 Assemble the pipes.

1 Thread the speaker cable from pipe A through pipe B and the base.

For quicker threading, loosely fold the cable in half (do not crease), pass the folded portion through the pipe, and then pull the rest of the cable through the base.

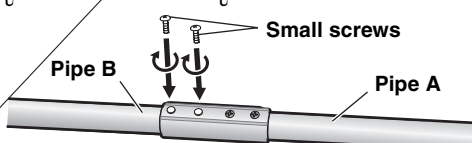


2 Join pipe A to pipe B.



3 Secure the pipes.

Ensure the screws are securely fastened.

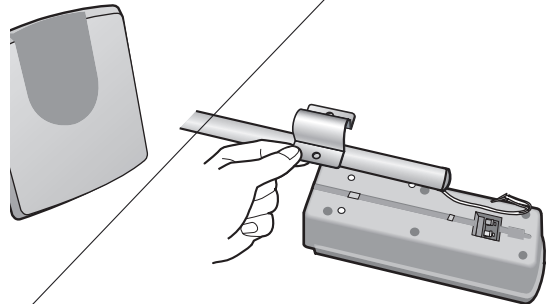


3 Attach the pipes to the speakers.

Slot the screw head in between the 2 stoppers of the speaker groove.

Ensure the pipe is fastened on straight by gradually tightening the right and left screws alternately, until fully tightened.

To prevent a short-circuit, do not cover the connection terminals with the pipe.



4 Connect the speaker cables.

5 Secure the speaker cables to the bases.

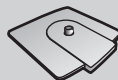
2 Front speakers



2 Pipes



2 Bases



4 Long screws



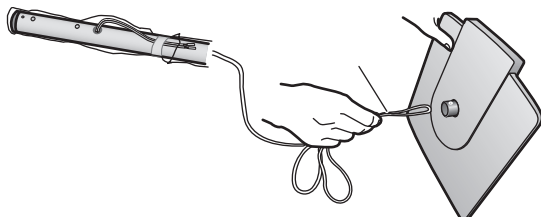
4 Short screws



1 Assemble the speaker stands.

1 Thread the speaker cable through the base.

For quicker threading, loosely fold the cable in half (do not crease), pass the folded portion through the hole, and then pull the rest of the cable through the base.



2 Insert the pipe.

3 Secure the pipe to the base.

Ensure the screws are securely fastened.

2 Attach the stands to the speakers.

Ensure the stand is fastened on straight by gradually tightening the top and bottom screws alternately until fully tightened.

You can also attach to the lower rear of the speaker.

The height of the speaker can be changed when attaching the stand to the upper rear or lower rear of the speaker.

3 Connect the speaker cables.

4 Secure the speaker cables to the bases.

Simple setup

STEP 1 Front speaker assembly

HT933

2 Front speakers



2 Pipes



2 Bases



4 Large screws



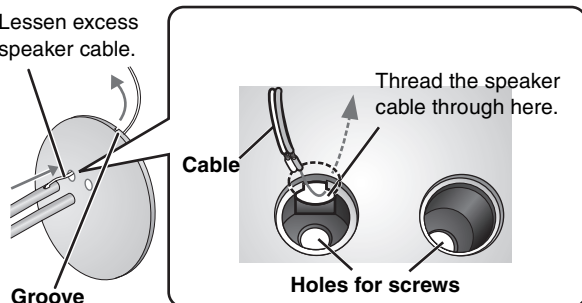
4 Small screws



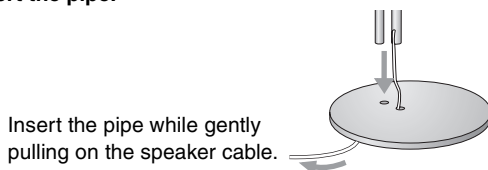
1 Attach the pipe to the base.

1 Thread the speaker cable through the base.

Lessen excess speaker cable.

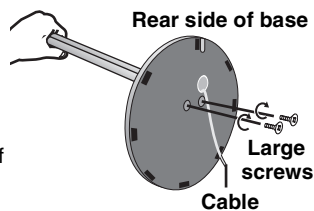


2 Insert the pipe.



3 Secure the pipe to the base.

Ensure the screws are securely fastened by lightly tightening the left and right side screws alternately until fully tightened. (The heads of the screws protrude slightly even if you have fully tightened them.)

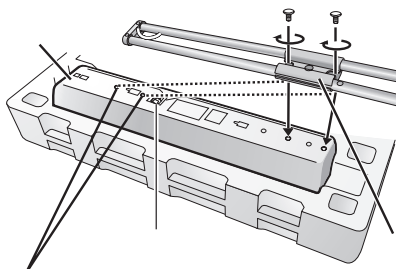


The supplied stands are specially designed for attachment to Panasonic SB-PF920 front speakers. Only use as indicated in this setup.

2 Attach the stand to the speakers.

- There is no difference between the right and left speakers and stands.
- Using the polyfoam included with this unit may be convenient.

Ensure the stand is fastened on straight by lightly tightening the top and bottom screws alternately until fully tightened.



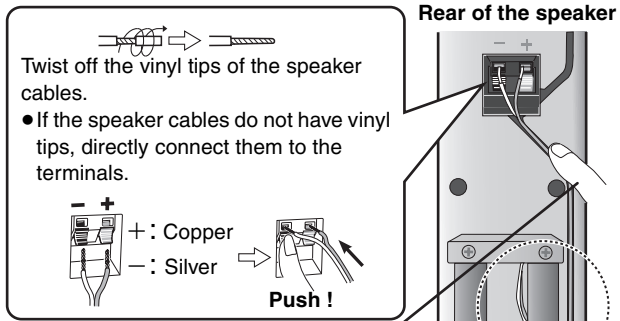
3 Front speaker height (Assembled diagram)

3 Adjust the speaker height.

- Check the screws you tightened in procedures 1 and 2 if the pipe and speaker are loose.

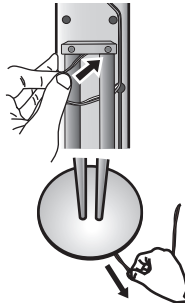
e.g. Attaching the stand to the lower rear

4 Connect the speaker cables.



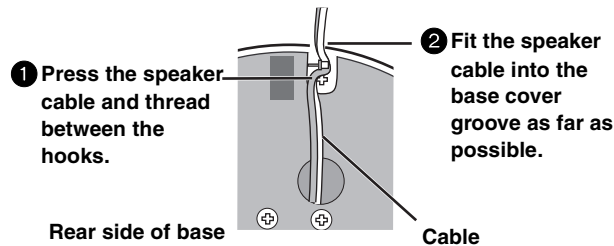
Press the speaker cable into the groove.

If there is any excess speaker cable, thread the speaker cable into the opening near the top of the pipe while pulling the speaker cable from the bottom of the base.



5 Fasten the speaker cable to the base.

- Using the same polyfoam as in procedure 2 will assist you in safely and securely fastening the speaker cables.



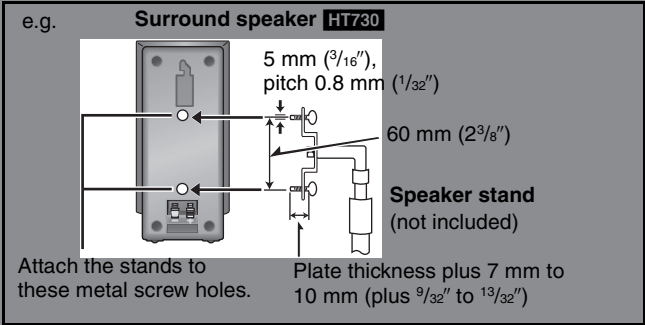
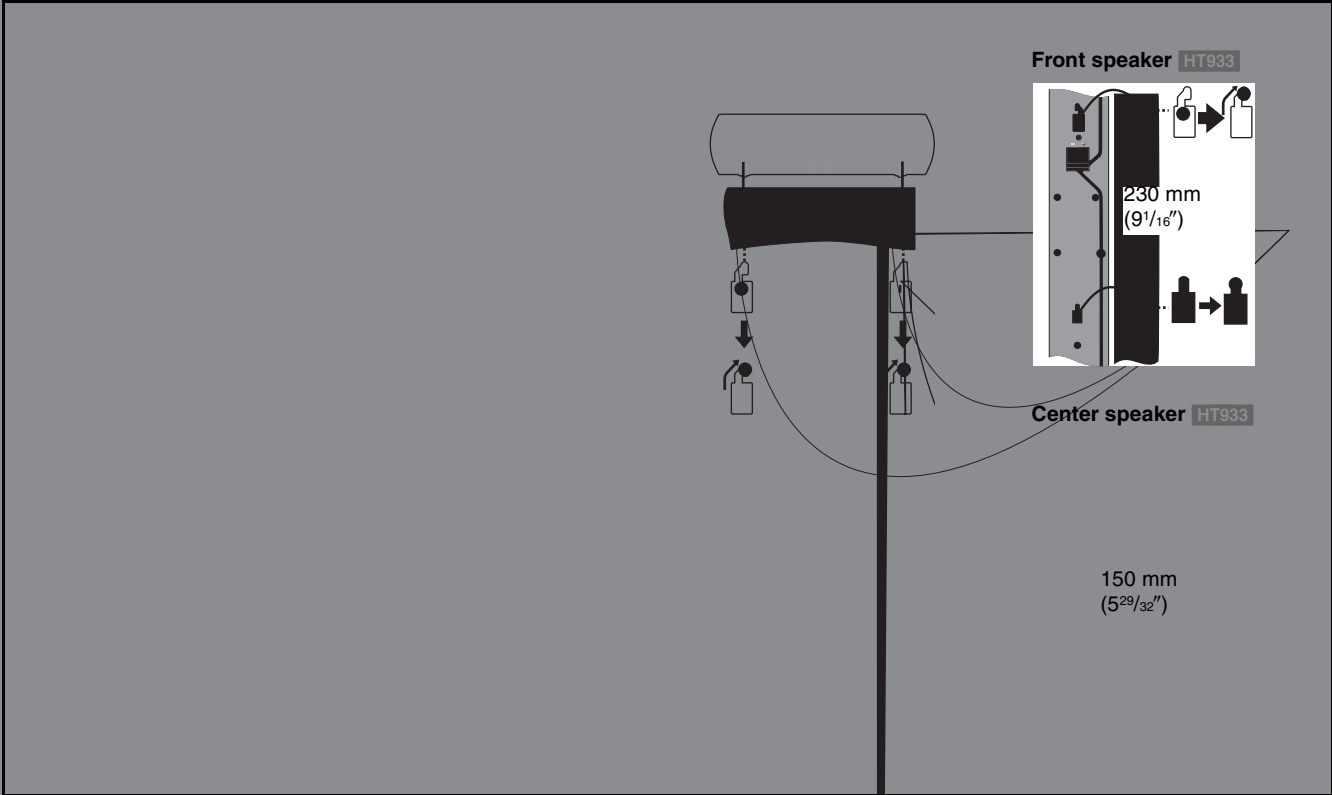
■ Preventing the speakers from falling over

Preparation

Attach screw eyes (not included) to secure the speakers to the wall (→ diagram below).

- You will need to obtain the appropriate screw eyes to match the walls or pillars to which they are going to be fastened.
- Consult a qualified housing contractor concerning the appropriate procedure when attaching to a concrete wall or a surface that may not have strong enough support. Improper attachment may result in damage to the wall or speakers.

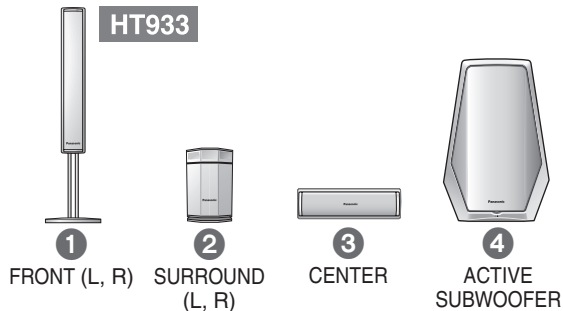
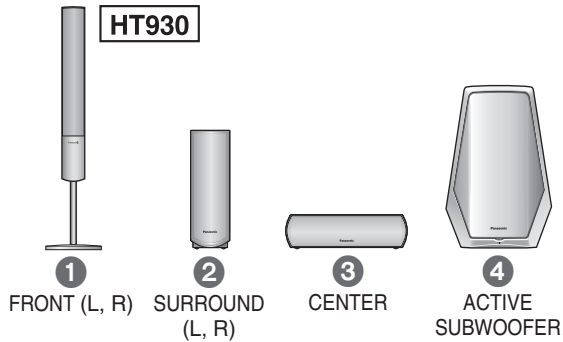
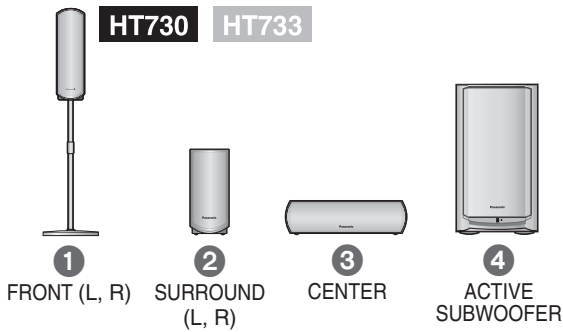
To prevent the speaker from falling over, thread the string (not included) from the wall to the speaker as shown and tie tightly.



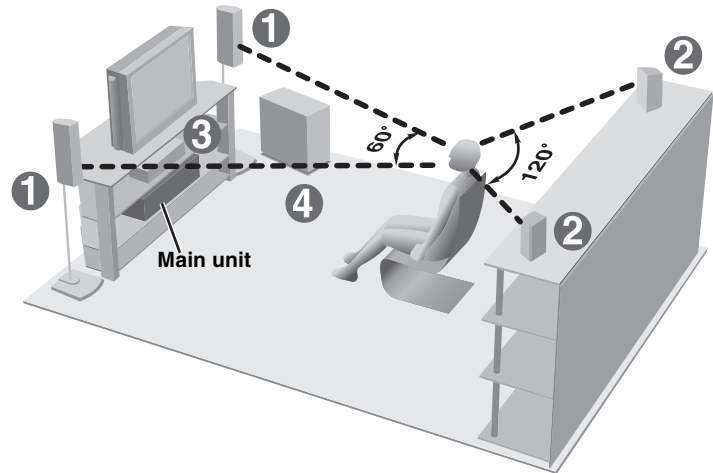
STEP 2 Positioning

How you set up your speakers can affect the bass and the sound field. Note the following points:

- Place speakers on flat secure bases.
- Placing speakers too close to floors, walls, and corners can result in excessive bass. Cover walls and windows with thick curtains.
- The left and right speakers are the same with respect to the front and surround speaker pairs.



Setup example HT730



- Place the front, center, and surround speakers at approximately the same distance from the seating position. The angles in the diagram are approximate.

Use only supplied speakers

Using other speakers can damage the unit, and sound quality will be negatively affected.

- Set the speakers up on an even surface to prevent them from falling. Take proper precautions to prevent the speakers from falling if you cannot set them up on an even surface.

Main unit

Note

Keep your speakers at least 10 mm ($13/32''$) away from the system for proper ventilation.

Center speaker

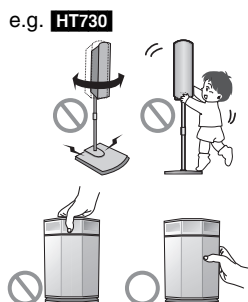
- Vibration caused by the center speaker can disrupt the picture if it is placed directly on the television. Put the center speaker on a rack or shelf.
- To prevent the speakers from falling, do not place directly on top of the television.

Active subwoofer

Place to the right or left of the television, on the floor or a sturdy shelf so that it won't cause vibration. Leave about 30 cm ($11^{13}/16''$) from the television, and 10 cm (4") at the rear for ventilation.

Caution

- Do not stand on the base and shake the speaker. Be cautious when children are near.



- HT933 Do not touch the netted area of the surround speakers.

Notes on speaker use

- You can damage your speakers and shorten their useful life if you play sound at high levels over extended periods.
- Reduce the volume in the following cases to avoid damage:
 - When playing distorted sound.
 - When the speakers are reverberating due to a record player, noise from FM broadcasts, or continuous signals from an oscillator, test disc, or electronic instrument.
 - When adjusting the sound quality.
 - When turning the unit on or off.

If irregular coloring occurs on your television

The supplied speakers are designed to be used close to a television, but the picture may be affected with some televisions and setup combinations.

If this occurs, turn the television off for about 30 minutes.

The television's demagnetizing function should correct the problem. If it persists, move the speakers farther away from the television.

	<p>Caution</p> <ul style="list-style-type: none"> • The active subwoofer and supplied speakers are to be used only as indicated in this setup. Failure to do so may lead to damage to the amplifier and/or the speakers, and may result in the risk of fire. Consult a qualified service person if damage has occurred or if you experience a sudden change in performance. • Do not attempt to attach these speakers to walls using methods other than those described in this manual.
--	--

STEP 3 Connecting speakers with the subwoofer

- Attach the speaker-cable stickers to make connection easier.
- The terminals of the subwoofer have high output power. Carefully connect the speaker wires.

3 Speaker cables

- 1× short cable: For center speaker
- 2× long cables: For surround speakers

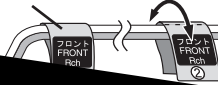


Sheet of speaker-cable stickers



The illustration shows SC-HT730 for U.S.A. and Canada.

Speaker-cable sticker



FRONT (R)



FRONT (L)

the speaker
res to
can de

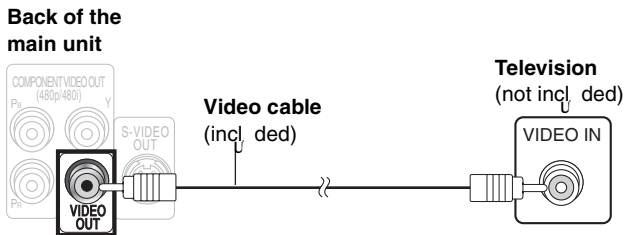
STEP 4 Video connections

Video cable

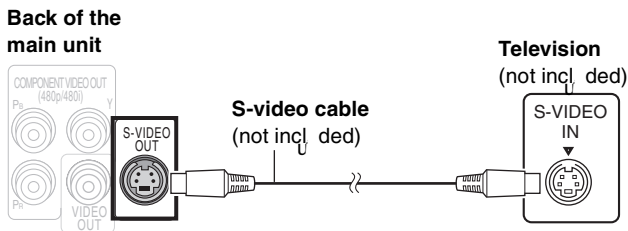


- Do not connect through the video cassette recorder.
- Due to copy guard protection, the picture may not be displayed properly.
- Turn the television off before connecting, and refer to the television's operating instructions.

■ Television with a VIDEO IN terminal



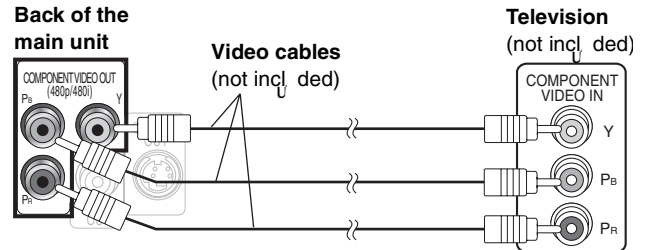
■ Television with an S-VIDEO IN terminal



S-VIDEO OUT terminal

The S-VIDEO OUT terminal achieves a more vivid picture than the VIDEO OUT terminal by separating the chrominance (C) and luminance (Y) signals. (Actual results depend on the television.)

■ Television with COMPONENT VIDEO IN terminals



COMPONENT VIDEO OUT terminals

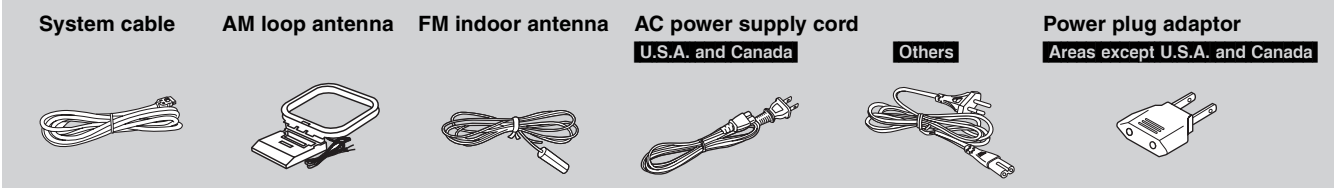
These terminals can be used for either interlace or progressive output and provide a picture better than the S-VIDEO OUT terminal. Connecting these terminals outputs the color difference signals (Pb/Pr) and luminance signal (Y) separately in order to achieve high fidelity in reproducing colors.

- The description of the component video input terminals depends on the television or monitor (e.g. Y/Pb/Pr, Y/B-Y/R-Y, Y/Cb/Cr). Connect to terminals of the same color.
- After making this connection, select "Darker" from the "Black Level Control" in the "Video" tab (→ page 27).

To enjoy progressive video

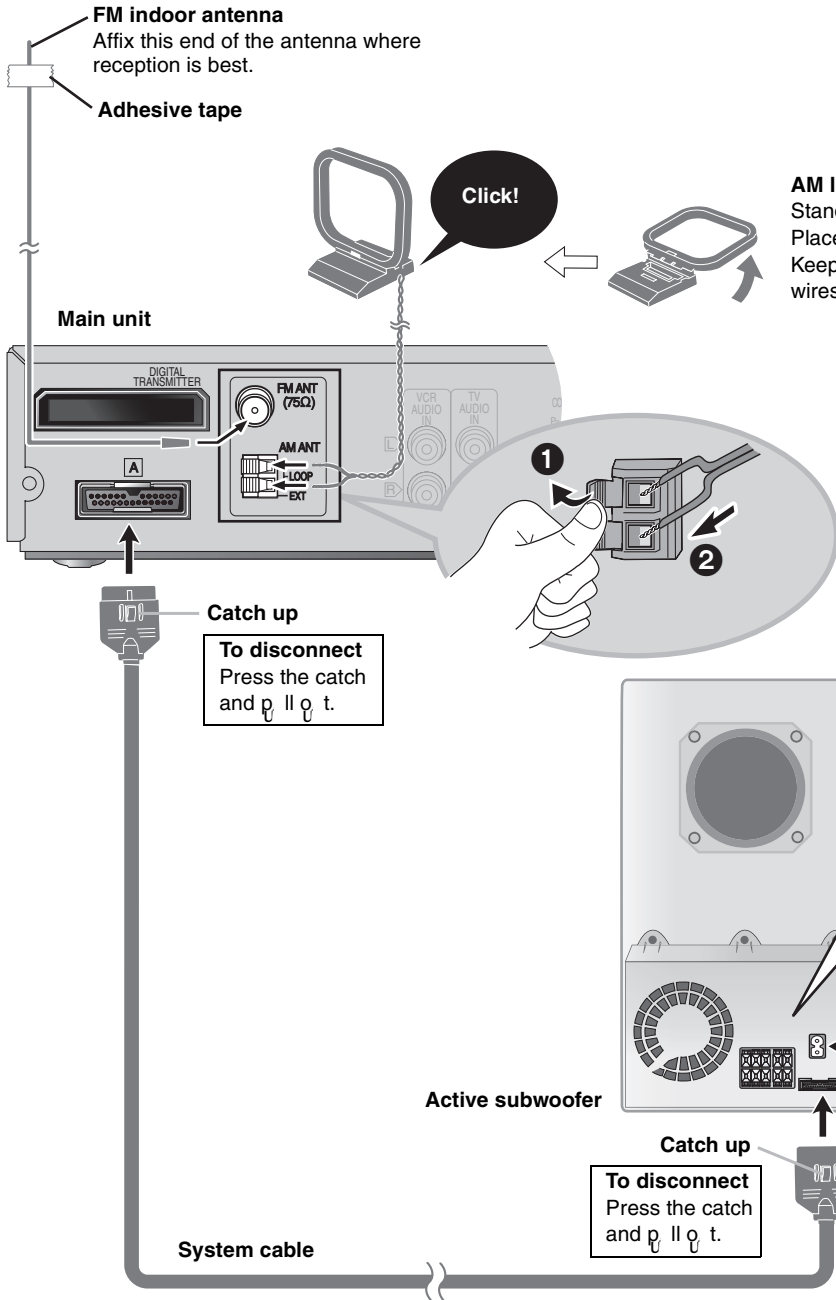
- Connect to the component video input terminals on a 480p compatible television. (Video will not be displayed correctly if connected to an incompatible television.)
- All Panasonic televisions that have 480p input connectors are compatible. Consult the manufacturer if you have another brand of television.

STEP 5 Radio and system connections



- Connect the AC power supply cord after all other connections are complete.
- Optional antenna connections (→ page 29).

The illustration shows SC-HT730 for U.S.A. and Canada.



For areas except U.S.A. and Canada
Before connecting the AC power supply cord Set the voltage.

127 V ← 110 V → 220 V-230 V ← 240 V

VOLT ADJ

Use a flat-head screwdriver to turn the voltage selector on the back of the subwoofer to the appropriate position for the area in which this system is used. If the power supply in your area is 115 V or 120 V, please set the voltage selector as follows:

- For 115 V: Set to 110 V.
- For 120 V: Set to 127 V.

AC power supply cord

For areas except U.S.A. and Canada

- If the power plug does not fit your AC outlet Use the power plug adaptor (included).

If it still doesn't fit, contact an electrical parts distributor for assistance.

Conserving power

The main unit consumes a small amount of power, even when it is turned off (For U.S.A. and Canada: approx. 0.5 W or for other areas: approx. 0.9 W). To save power when the unit is not to be used for a long time, unplug it from the household AC outlet. You will need to reset some memory items after plugging in the unit.

Note

The included AC power supply cord is for use with this unit only. Do not use it with other equipment.

Set your surround sound free!
Panasonic SH-FX50 Digital Transmitter and Receiver (optional)

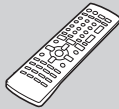
For U.S.A. and Canada (Except SC-HT933)

When you insert the digital transmitter into the DIGITAL TRANSMITTER slot of the main unit and connect the surround speakers to the receiver, you can enjoy surround speaker sound wirelessly.

For details, please refer to the operating instructions for Panasonic SH-FX50 Digital Transmitter and Receiver.

STEP 6 The remote control

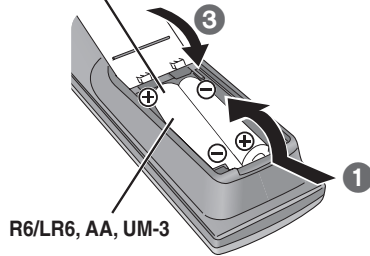
Remote control



Batteries



2 Insert so the poles (+ and -) match those in the remote control.



1 Do not use rechargeable type batteries.

Do not:

- mix old and new batteries.
 - use different types at the same time.
 - heat or expose to flame.
 - take apart or short circuit it.
 - attempt to recharge alkaline or manganese batteries.
 - use batteries if the covering has been peeled off.
- Mishandling of batteries can cause electrolyte leakage which can damage items the fluid contacts and may cause a fire.

Remove if the remote control is not going to be used for a long period of time. Store in a cool, dark place.

Use

Aim at the remote control signal sensor (→ page 14), avoiding obstacles, at a maximum range of 7 m (23 feet) directly in front of the unit.

The QUICK SETUP screen assists you to make necessary settings.

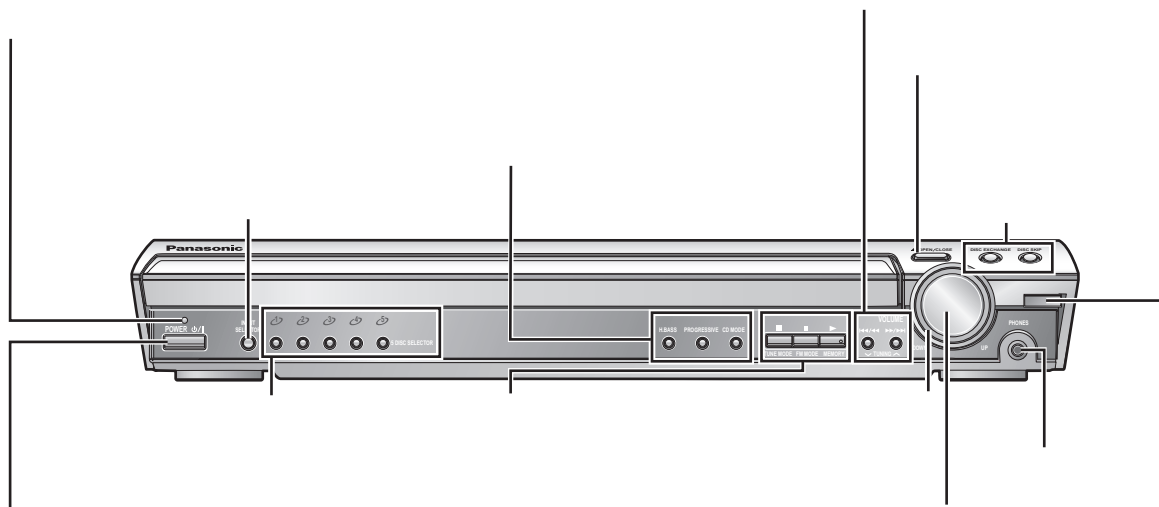
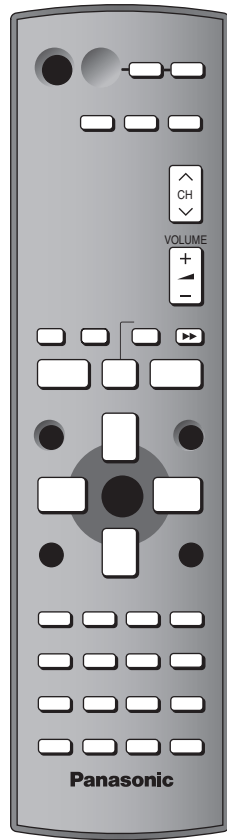
Turn on the television and select the appropriate video input on the television.

To change these settings later








Select "QUICK SETUP" in the "Others" tab (→ page 27).

Control reference guide

See reference pages in brackets.



Discs that can be played

Disc	Logo	Indication in these operating instructions	Remarks
DVD-RAM		RAM	Recorded using Version 1.1 of the Video Recording Format (a unified video recording standard), such as DVD video recorders, DVD video cameras, personal computers, etc.
		JPEG	Recorded using the DCF (Design for Camera File system) standard Version 1.0. • To play JPEG files, select "Play as Data Disc" in Other Menu (→ page 25).
DVD-Audio		DVD-A	—
		DVD-V	Some DVD-Audio discs contain DVD-Video content. To play DVD-Video content, select "Play as DVD-Video" in Other Menu (→ page 25).
DVD-Video			—
DVD-R (DVD-Video)/ DVD-RW (DVD-Video)		DVD-V	Discs recorded and finalized* on DVD video recorders or DVD video cameras.
+R (Video)/ +RW (Video)	—		Discs recorded and finalized* on DVD video recorders or DVD video cameras.
Video CD		VCD	—
SVCD			Conforming to IEC62107
CD		CD	This unit is compatible with HDCD, but does not support the Peak Extension (a function which expands the dynamic range of high level signals). HDCD-encoded CD's sound better because they are encoded with 20 bits, as compared with 16 bits for all other CD's.
CD-R CD-RW	—	WMA MP3 JPEG CD VCD	<ul style="list-style-type: none"> This unit can play CD-R/RW (audio recording disc) recorded with the formats on the left. Close the sessions or finalize* the disc after recording. HighMAT discs WMA, MP3 or JPEG files only. To play with using the HighMAT function, select "Play as Data Disc" in Other Menu (→ page 25). WMA This unit does not support Multiple Bit Rate (MBR: a file that contains the same content encoded at several different bit rates).

* A process that allows play on compatible equipment.

• It may not be possible to play the above discs in all cases due to the type of disc or condition of the recording.

Discs that cannot be played

DVD-ROM, CD-ROM, CDV, CD-G, SACD, DivX Video Discs and Photo CD, DVD-RAM that cannot be removed from their cartridge, 2.6-GB and 5.2-GB DVD-RAM, and "Chaoji VCD" available on the market including CVD, DVCD and SVCD that do not conform to IEC62107.

Audio format of DVD's

This unit automatically recognizes and decodes discs with these symbols.



Note about using a DualDisc

The digital audio content side of a DualDisc does not meet the technical specifications of the Compact Disc Digital Audio (CD-DA) format so play may not be possible.

Main unit and disc caution

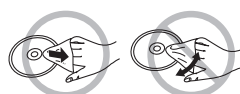
To prevent damage

Do not:

- load more than one disc per tray.
- touch the drawer or the carousel while they are in motion.
- rotate the carousel by hand.
- close the drawer by hand.

To clean discs

Wipe with a damp cloth and then wipe dry.



Disc handling precautions

- Do not attach labels or stickers to discs (This may cause disc warping, rendering it unusable).
- Do not write on the label side with a ball-point pen or other writing instrument.
- Do not use record cleaning sprays, benzene, thinner, static electricity prevention liquids or any other solvent.
- Do not use scratch-proof protectors or covers.
- Do not use the following discs:
 - Discs with exposed adhesive from removed stickers or labels (rented discs, etc).
 - Discs that are badly warped or cracked.
 - Irregularly shaped discs, such as heart shapes.

Discs that can be played/Main unit and disc caution

1 Power on. POWER ϕ /I

3 Open the drawer and place the disc(s). ▲ OPEN/CLOSE

- Load double-sided discs so the label for the side you want to play is facing up.
- To load discs on the other trays, press [DISC SKIP] on the main unit.
- Play will start from the disc in the front-left position of the tray.
- **RAM** Remove the disc from its cartridge before use.

2 Select "DVD/CD". INPUT SELECTOR

4 Close the drawer. ▲ OPEN/CLOSE

A disc indicator lights if a disc is detected or a tray is unchecked (→ page 18, Disc information).

5 DISC SELECTOR buttons/indicators

5 Start play. ▶

When the disc finishes playing:
If the next disc doesn't start playing, select it with the 5 DISC SELECTOR buttons.

- You can also select the disc using the remote control (→ page 18, Disc information).

6 Adjust the volume. VOLUME

DOWN UP

Press to skip.
Press and hold to

- search (during play)
- slow-motion (during pause) (Motion picture part)

• Press [▶] (play) to start normal play.

Using the main unit

Progressive video PROGRESSIVE

Skipping to the next disc tray DISC SKIP

- **While the drawer is closed**
Each time you press the button, the carousel moves counter-clockwise by one tray.

Exchanging the disc in the play position DISC EXCHANGE

- The drawer opens and the disc in the play position comes to the front-left position.
- Press the button again to play the disc after changing the disc in the front-left position.

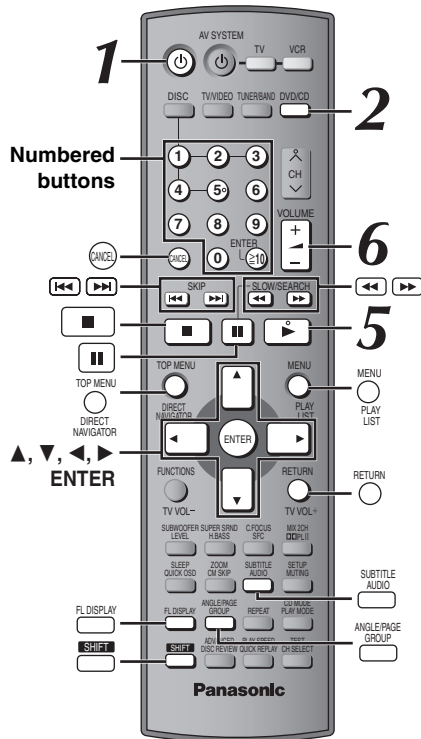
Changing the other discs without interrupting play

- The carousel moves one tray clockwise and each subsequent press moves it two trays in alternate directions.

Note

- Discs continue to rotate while menus are displayed. Press [■] when you finish to preserve the unit's motor and your television screen.
- Total title number may not be displayed properly on +R/+RW.

Using the remote control



Enter number

RAM DVD-A DVD-V VCD CD
 e.g. To select 12:
 [≥10] → [1] → [2]

VCD with playback control
 Press [■] to cancel the PBC function, and then press the numbered buttons.

WMA MP3 JPEG
 e.g. To select 123:
 [1] → [2] → [3] → [ENTER]

- Press [CANCEL] to cancel the number(s).

Disc menu

DVD-A DVD-V
 Shows a disc top menu

RAM
 Shows the programs (→ page 23)

DVD-V
 Shows a disc menu

RAM
 Shows a play list (→ page 23)

VCD with playback control
 Shows a disc menu

Return to previous screen

RETURN

Main unit display

RAM DVD-A DVD-V VCD CD
WMA MP3
 Time display
 ↔ Information display

JPEG
 When Slideshow (→ page 24) is on:
 SLIDE ↔ Information display
 When Slideshow is off:
 PLAY ↔ Information display

Subtitles/Information screen

RAM
 Turns subtitle on/off (→ page 19)

DVD-V VCD (SVCD only)
 Selects the subtitle languages (→ page 19)

JPEG
 Date → Details of the picture
 ← No information ←

Starting play from a selected group

DVD-A WMA MP3 JPEG
 A folder on WMA/MP3 and JPEG discs is treated as a "Group".

Select
 ↓
 Select
 Register

Stop

■

The position is memorized while "RESUME" is on the display.
 • Press [▶] (play) to resume.
 • Press [■] again to clear the position.

Pause

⏸

• Press [▶] (play) to restart play.

Skip

SKIP

◀ ▶

• **WMA MP3 JPEG**
 [▲, ▼]: Group skip during play
 [◀, ▶]: Content skip during play

Search (during play)

Slow-motion (during pause)

SLOW/SEARCH

◀ ▶

- Up to 5 steps.
- Press [▶] (play) to start normal play.
- **VCD** Slow-motion: forward direction only.

Frame-by-frame (during pause)

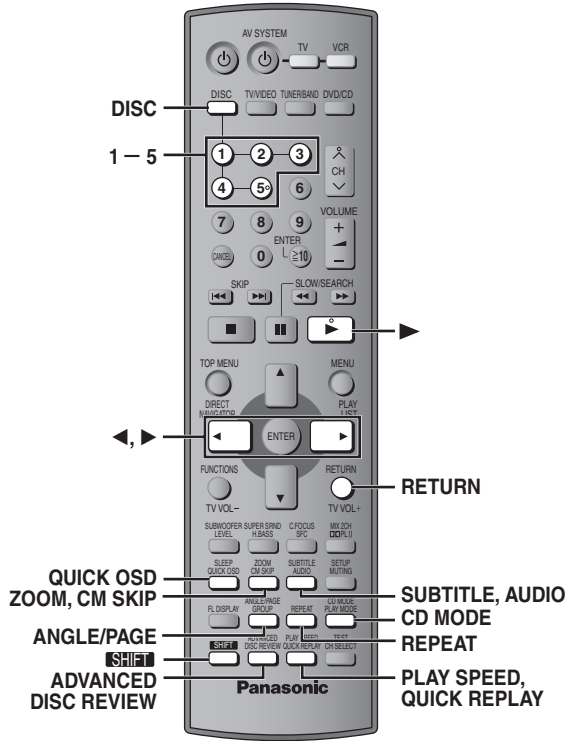
DVD-A (Motion picture part)
RAM DVD-V VCD

• **VCD** Forward direction only.

On-screen item select

Select

Register



ADVANCED DISC REVIEW

Reviewing titles to play (ADVANCED DISC REVIEW)

RAM DVD-V (Except +R/+RW)
Allows you to browse the disc contents and start playing from the selected position. You can select either "Intro Mode" or "Interval Mode" in "Advanced Disc Review" in the "Disc" tab (→ page 26).

- 1 Press [ADVANCED DISC REVIEW].**
The QUICK OSD screen is displayed.
e.g. **RAM**
- 2 Press [▶] (play) when you find a title/program to play.**

This may not work depending on the disc and the play position.

CD sequential play (CD MODE)

VCD CD WMA MP3
This feature is very convenient if you want to play several music CD's sequentially. Make sure that applicable disc is in the play position before playing (→ Disc information, left).
DVD and JPEG are skipped without being played.

- While stopped**
- 1 Press [SHIFT]+[CD MODE].**
 - 2 Press [▶] (play).**

- If all loaded discs are DVD or unchecked, CD Mode does not work and "CD MODE" flashes.
- HighMAT menus and Video CD playback control are disabled.
- You cannot change the mode during program or random play.
- If you want to play a DVD, press [SHIFT]+[CD MODE] again to cancel CD Mode. (CD Mode is also canceled when you switch the unit to standby or select another source.)

Quick replay

(Only when the elapsed play time can be displayed.)
(Except +R/+RW)
Press [QUICK REPLAY] to skip back a few seconds.

Skipping one minute forward (CM SKIP)

(Only when the elapsed play time can be displayed.)
RAM DVD-V (Except +R/+RW)
Play restarts from approximately a minute later. Convenient when you want to skip commercials etc.
During play
Press [CM SKIP].

RAM It is not possible to skip through the current program if the start of the next program is within about one minute of the point you are skipping from.

Disc information

You can select the disc after checking the discs loaded with the Disc information screen.
• You can also select the disc directly with the 5 DISC SELECTOR buttons on the main unit.

- 1 Press [DISC] to show the Disc information screen.**
e.g.
- 2 Press the numbered buttons ([1] – [5]) to select the disc.**

To clear the screen
Press [DISC].

Displaying current playback condition (QUICK OSD)

The current playback condition is displayed.
Press [QUICK OSD].
e.g. **DVD-V**

- **To exit the screen**
Press [QUICK OSD].
- **CD MP3 WMA** The QUICK OSD screen will appear automatically.

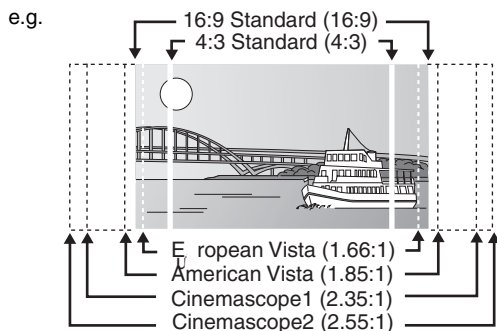
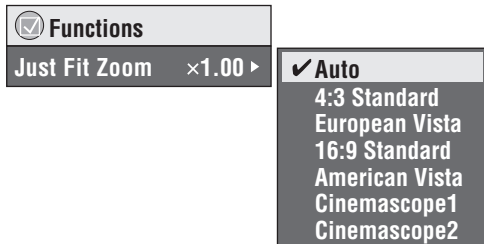
Changing the zoom ratio

DVD-A (Motion picture part) **RAM** **DVD-V** **VCD**

This feature expands the letterbox picture to fit the screen.

During play

Press **[SHIFT]+[ZOOM]** several times to select the preset aspect ratio (Just Fit Zoom) or "Auto".



Fine adjustments (Manual Zoom)

After selecting the preset aspect ratio or "Auto", press **[◀, ▶]**.

–from "x1.00" to "x1.60" (in 0.01 units)

–from "x1.60" to "x2.00" (in 0.02 units)

• Press and hold **[◀, ▶]** to alter faster.

Changing play speed

DVD-A (Motion picture part) **RAM** **DVD-V**

During play

Press **[SHIFT]+[PLAY SPEED]** several times to select "Normal", "Fast" or "Slow".



Changing play speed between the range of "x0.6" to "x1.4" (in 0.1 units)

Press **[◀, ▶]** while the above message is displayed.

- Press **[▶]** (play) to return to normal play.
- After you change the speed
 - Dolby Pro Logic II and Surround Enhancement do not work.
 - Audio output switches to 2ch.
 - Sampling frequency of 96 kHz is converted to 48 kHz.
 - **HT930** **HT933** Multi Re-master does not work.
- This function may not work depending on the disc's recording.

Angle selection and Still picture rotation/advance

Press **[SHIFT]+[ANGLE/PAGE]** several times to select the angle or rotate/advance the still picture.

DVD-V (with multiple angles)–Angle selection

JPEG –Still picture rotation

DVD-A –Still picture advance

(Press **[RETURN]** to go back to page 1.)

Changing soundtracks

DVD-A **DVD-V** (with multiple soundtracks) **RAM** **VCD**

Press **[AUDIO]** several times to select the soundtrack.

RAM **VCD**

You can use this button to select "L", "R" or "LR".

e.g. **DVD-V**



DVD-V (Karaoke discs)

Press **[◀, ▶]** to select "On" or "Off" for vocals.

Read the disc's instructions for details.

Signal type/data

LPCM/PPCM/Digital/DTS/MPEG: Signal type

kHz (Sampling frequency)/bit/ch (Number of channels)

Example: 3/2 .1ch

.1: Low frequency effect (not displayed if there is no signal)
0: No surround
1: Mono surround
2: Stereo surround (left/right)
1: Center
2: Front left+Front right
3: Front left+Front right+Center

Changing subtitles

DVD-V (with multiple subtitles) **VCD** (SVCD only)

Press **[SHIFT]+[SUBTITLE]** several times to select the subtitle language.

- On +R/+RW, a subtitle number may be shown for subtitles that are not displayed.

To display/clear the subtitles

Press **[◀, ▶]** to select "On" or "Off".



RAM (On/Off only with discs that contain

subtitle on/off information)

Press **[SHIFT]+[SUBTITLE]** to select "On" or "Off".

- Subtitle on/off information cannot be recorded using Panasonic DVD Recorders.

Repeat play

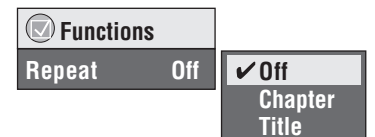
(Only when the elapsed play time can be displayed.)

JPEG: Works with all JPEG content.)

During play

Press **[REPEAT]** several times to select an item to be repeated.

e.g. **DVD-V**



RAM: Program→Disc→Off

• During play list play: Scene→Playlist→Off

DVD-A: Track→Group*→Off

DVD-V: Chapter→Title*→Off

VCD **CD**: Track→Disc*→Off

• When CD Mode is on: Track→Disc→All CD's→Off

• When CD Mode is on, during program and random play:

Track→All CD's→Off

WMA **MP3**: Content→Group*→Off

• When CD Mode is on: Content→Group*→All CD's→Off

• When CD Mode is on, during program and random play:

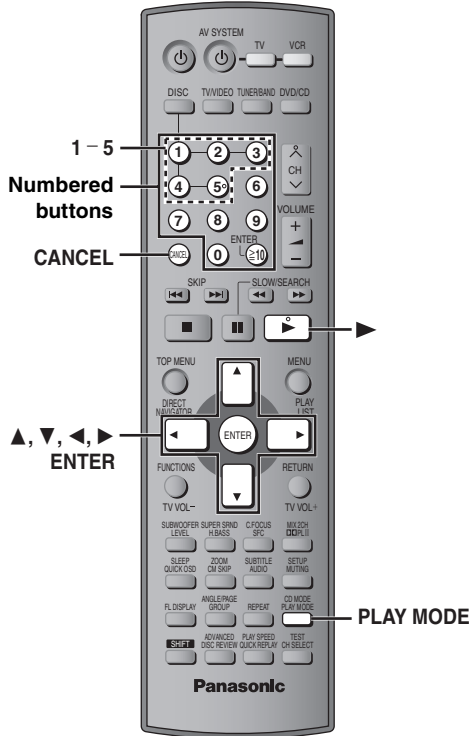
Content→All CD's→Off

JPEG: Group*→Off

* "All" is displayed during program and random play.



Program/Random play



Press [PLAY MODE] while stopped.

Program and random playback screens appear sequentially.
 Program → Random*

← off (Normal play) ←

* "RANDOM 1" and "RANDOM 2" (→ page 21) are displayed on the main unit's display when CD Mode is on (→ page 18).

To exit the program and random mode

Press [PLAY MODE] several times while stopped.

- Disable HighMAT disc play to use program and random play. Select "Play as Data Disc" in Other Menu (→ page 25).
- **DVD-A**
Some discs contain bonus groups. If a password screen appears after selecting a group, enter the password with the numbered buttons to play the bonus group. Refer also to the disc's jacket.

Program play (up to 32 items)

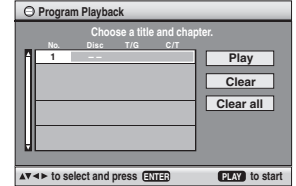
■ When CD Mode is off

DVD-A DVD-V VCD CD WMA MP3 JPEG

You can program all the items on a disc in the play position.

- 1 **DVD-A DVD-V** Press the numbered buttons to select a group (**WMA MP3 JPEG** then press [ENTER]) or title.

e.g. **DVD-V**



• To select a 2-digit number

e.g. To select 25: [≥10] → [2] → [5]

WMA MP3 JPEG [2] → [5] → [ENTER]

- 2 Press the numbered buttons to select a chapter or track (**WMA MP3 JPEG** then press [ENTER]).

• Repeat steps 1 and 2 to program other items.

• **VCD CD** Step 1 is unnecessary.

- 3 Press [▶] (play).

■ When CD Mode is on (→ page 18)

VCD CD WMA MP3

You can program all the items on all the discs.

- 1 Press the numbered buttons ([1] – [5]) to select a disc.
- 2 Press the numbered buttons to select the items (**WMA MP3** then press [ENTER]).

• To select a 2-digit number

e.g. To select 25: [≥10] → [2] → [5]

WMA MP3 [2] → [5] → [ENTER]

• Repeat steps 1 and 2 to program other items.

- 3 Press [▶] (play).

To select an item using the cursor buttons

Press [ENTER] and [▲, ▼] to select an item, then press [ENTER] again to register.

To change the selected program

- 1 Press [▲, ▼] to select an item.
- 2 Repeat above steps 1 and 2.

To clear the selected program

- 1 Press [▲, ▼] to select an item.
- 2 Press [CANCEL] (or press [▲, ▼, ◀, ▶] to select "Clear" and press [ENTER]).

To clear the whole program

Select "Clear all" with [▲, ▼, ◀, ▶] and press [ENTER].

The whole program is also cleared when the disc is moved out of the play position, the unit is turned off or another source is selected.

Random play

■ When CD Mode is off

VCD CD

You can play all the items on a disc in the play position in random order.

DVD-A DVD-V WMA MP3 JPEG

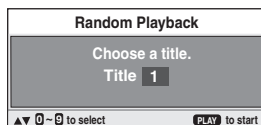
You can play selected item(s) on a disc in the play position in random order.

1

DVD-A DVD-V WMA MP3 JPEG

Press the numbered buttons to select a group or a title.

e.g. DVD-V



DVD-A

- To enter all groups, press [◀, ▶] to select "All" and press [ENTER].
- To deselect a group, press numbered buttons corresponding to the group you want to clear.

2 Press [▶] (play).

Random 1 play

■ When CD Mode is on (→ page 18)

VCD CD WMA MP3

You can play all the items on all the discs in random order.

Press [▶] (play).



Random 2 play

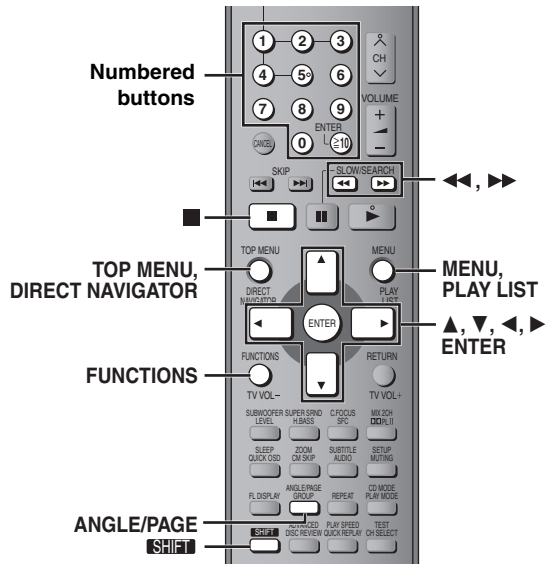
■ When CD Mode is on (→ page 18)

VCD CD WMA MP3

You can play all the discs in sequence, but all the items on each disc are played in random order.

Press [▶] (play).

Using navigation menus



- Press [SHIFT]+[AN] or content field.
- To enjoy listening to JPEG image or Select a JPEG (The opposite)
- To exit the Press [ME

Using

1 w

2

Using navigation menus

Playing data discs

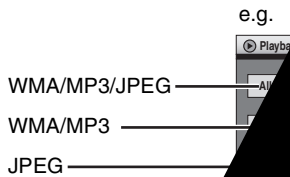
WMA MP3 JPEG

You can play JPEG files on DVD-RAM or play HighMAT discs using the HighMAT function (→ page 25, "Play as Data Disc Other Menu").

- Playing HighMAT™ discs (→ page 23)

Playing items in order (Playback Menu)

1 Press [TOP MENU].



- To exit the screen Press [TOP MENU].

2 Press [▲, ▼] to "Picture" and

Playing from the

1 Press [ME

2 Press and

3 To p P

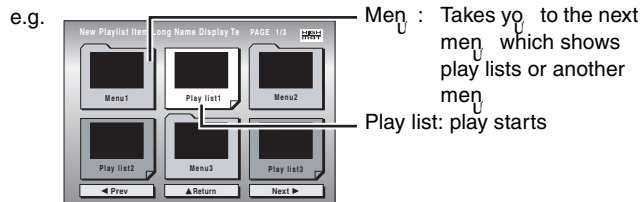
e.g.

Playing HighMAT™ discs

WMA MP3 JPEG

- 1 Press [TOP MENU].
- 2 Press [▲, ▼, ◀, ▶] to select the item, then press [ENTER].

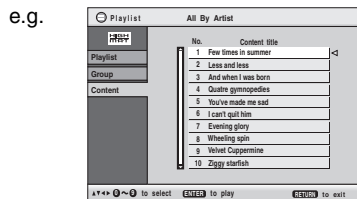
• Repeat this step if necessary.



- To change the menu background Press [FUNCTIONS]. The background changes to the one recorded on the disc.
- To exit the screen Press [■].

Selecting from the list

- 1 During play Press [MENU].



- 2 Press [◀] then [▲, ▼] to switch among "Playlist", "Group" and "Content" lists.
- 3 Press [▶] then [▲, ▼] to select an item and press [ENTER].

• Press [SHIFT]+[ANGLE/PAGE] to skip page by page.

- To exit the screen Press [MENU].

Tips for making WMA/MP3 and JPEG discs (For CD-R, CD-RW)

- Discs must conform to ISO9660 level 1 or 2 (except for extended formats).
- This unit supports multi-session but if there are a lot of sessions it takes more time for play to start. Keep the number of sessions to a minimum to avoid this.
- When there are more than 8 groups, the eighth group onwards will be displayed on one vertical line in the menu screen.
- There may be differences in the display order on the menu screen and computer screen.
- This unit cannot play files recorded using packet write.

Naming folders and files

(Files are treated as content and folders are treated as groups on this unit.)

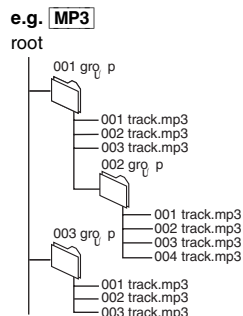
At the time of recording, prefix folder and file names with 3-digit numbers in the order you want to play them (this may not work at times).

Files must have the extension:

“.WMA” or “.wma”

“.MP3” or “.mp3”

“.JPG”, “.jpg”, “.JPEG” or “.jpeg”



Playing RAM discs

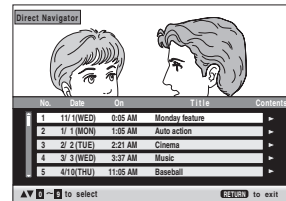
RAM

- Titles appear only if the titles are recorded on the disc.
- You cannot edit programs, play lists and disc titles.

Playing the programs

- 1 Press [DIRECT NAVIGATOR].

e.g.



- To exit the screen Press [DIRECT NAVIGATOR].

- 2 Press [▲, ▼] or the numbered buttons to select the program.

• Press [SHIFT]+[ANGLE/PAGE] to skip page by page.

• To select a 2-digit number

e.g. 23: [≥10] → [2] → [3]

• Press [▶] to show the contents of the program and the disc.

- 3 Press [ENTER].

Playing a play list

(Only when the disc contains a play list)

- 1 Press [PLAY LIST].

e.g.



- To exit the screen Press [PLAY LIST].

- 2 Press [▲, ▼] or the numbered buttons to select the play list.

• Press [SHIFT]+[ANGLE/PAGE] to skip page by page.

• To select a 2-digit number

e.g. 23: [≥10] → [2] → [3]

- 3 Press [ENTER].

WMA

- You cannot play WMA files that are copy protected.
- This unit does not support Multiple Bit Rate (MBR).

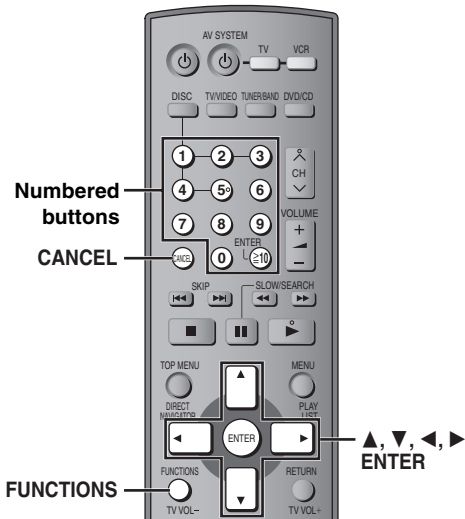
MP3

- This unit does not support ID3 tags.
- Compatible sampling rates: 8, 11.02, 12, 16, 22.05, 24, 32, 44.1 and 48 kHz.

JPEG

- To view JPEG files on this unit:
 - Take them on a digital camera that meets the DCF Standard (Design rule for Camera File system) Version 1.0. Some digital cameras have functions that are not supported by the DCF Standard Version 1.0 like automatic picture rotation which may render a picture unviewable.
 - Do not alter the files in any way or save them under a different name.
- This unit cannot display moving pictures, MOTION JPEG and other search formats, still pictures other than JPEG (e.g. TIFF) or play pictures with attached audio.

Using on-screen menus



1	FUNCTIONS 	Press once.
2	Select Go to the next menu Register Return to the previous menu	Select the menu.
3	Select Register 1 2 3 4 5 6 7 8 9 ENTER 0 10	Make the settings.
4	FUNCTIONS 	Press to exit.

Items shown differ depending on the type of disc.

Main menu	
Program Group	To start from a specific item
Title	
Chapter	
Track	
Playlist	
Content	
Time	To skip incrementally or decrementally* (Time Slip for play only) 1 Press [ENTER] twice to show the Time Slip indicator. 2 Press [▲, ▼] to select the time and press [ENTER]. • Press and hold [▲, ▼] to alter faster. To start from a specific time* (Time Search) To change remaining/elapsed time display
Audio	(→ page 19, Changing soundtracks) WMA MP3 To display the current disc type
Still Picture	To switch still pictures
Thumbnail	To show thumbnail images
Subtitle	(→ page 19, Changing subtitles)
Marker (VR)	RAM To recall a marker recorded on DVD-Video recorders To recall a marker: Press [▲, ▼] → Press [ENTER]
Angle	(with multiple angles) To select the angle
Rotate Picture	To rotate picture
Slideshow	To turn on/off slideshow To change the slideshow timing (0–30 sec)
Other Settings	(→ below)

Other Settings

Play Speed	DVD-A (Motion picture part) RAM DVD-V To change play speed – from “×0.6” to “×1.4” (in 0.1 unit steps)
-------------------	---

■ Play Menu

(Only when the elapsed play time can be displayed.)

JPEG: Works with all JPEG content.)

Repeat	(→ page 19, Repeat play)
A-B Repeat	Except JPEG RAM (Still picture part) To repeat a specified section Press [ENTER] at the starting and ending points. Press [ENTER] again to cancel.

Marker	Except RAM To mark up to 5 positions to play again Press [ENTER] (The unit is now ready to accept markers.) To mark a position: Press [ENTER] (at the desired point) To mark another position: Press [◀, ▶] to select “*” → Press [ENTER] To recall a marker: Press [◀, ▶] → Press [ENTER] To erase a marker: Press [◀, ▶] → Press [CANCEL] • This feature does not work during program and random play.
Advanced Disc Review	(→ page 18, Reviewing titles to play (ADVANCED DISC REVIEW))

Other Settings

Picture Menu

Picture Mode	<p>Normal</p> <p>Cinema1: Mellows images and enhances detail in dark scenes.</p> <p>Cinema2: Sharpens images and enhances detail in dark scenes.</p> <p>Animation</p> <p>Dynamic</p> <p>User (Press [ENTER] to select "Picture Adjustment") (→ below)</p>
	<p>Picture Adjustment</p> <p>Contrast Brightness</p> <p>Sharpness Color</p> <p>Gamma: Adjusts the brightness of dark parts.</p> <p>Depth Enhancer</p> <p>Reduces the rough noise in the background to give a greater feeling of depth.</p>
Video Output Mode	<p>480i (Interlace) ↔ 480p (Progressive)</p> <p>When you select "480p", a confirmation screen appears. Select "Yes" only if connecting to a progressive output compatible television.</p>
Transfer Mode	<p>If you have chosen "480p" (→ above), select the method of conversion for progressive output to suit the type of material.</p> <p>Auto1 (normal): Detects 24 frame-per-second film content and appropriately converts it.</p> <p>Auto2: Compatible with 30 frame-per-second film content in addition to 24 frame-per-second film content.</p> <p>Video: Select when using Auto1 or Auto2, and the video content is distorted.</p>

Audio Menu

Dolby Pro Logic II	(→ page 30, Dolby Pro Logic II)
Dialogue Enhancer	<p>To make the dialogue in movies easier to hear [DVD-V] (Dolby Digital, DTS, MPEG, 3-channel or higher, with the dialogue recorded in the center channel)</p> <p>On ↔ Off</p>
Multi Re-master (HT930 [HT933] only)	<p>[RAM] [DVD-V] (Discs recorded with 48 kHz only) [DVD-A] (Discs recorded with 44.1 kHz or 48 kHz only) [VCD] [CD]</p> <ul style="list-style-type: none"> • During 2ch output of these discs, this feature gives you a more natural sound by adding the higher frequency signals not recorded on the disc, for example, playing DVD-Video recorded with 48 kHz at 96 kHz. (Sampling frequency → page 38) • During multi-channel output of these discs, this feature reproduces the frequencies lost during recording to give you a sound closer to the original. <p>WMA [MP3] (Disc recording is other than 8 kHz, 16 kHz, 32 kHz)</p> <p>This feature reproduces the higher frequencies lost during recording to give you a sound closer to the original.</p> <p>1 ↔ 2 ↔ 3 ↔ Off</p> <p>↑ ↑</p> <p>[DVD-A] [DVD-V] [CD] (LPCM/PPCM)</p> <ol style="list-style-type: none"> 1 High tempo (e.g., pop and rock) 2 Various tempos (e.g., jazz) 3 Low tempo (e.g., classical) <p>Other discs</p> <ol style="list-style-type: none"> 1 Light effect 2 Medium effect 3 Strong effect <ul style="list-style-type: none"> • You can confirm the sampling frequency on the screen.

Sound Enhancement	<p>Enhances audio output to produce a warm hall-like sound.</p> <p>On ↔ Off</p>
-------------------	---

Display Menu

Information	[JPEG] Off, Date, Details
Subtitle Position	0 to -60 (in 2 unit steps)
Subtitle Brightness	Auto, 0 to -7
4:3 Aspect	<p>To select how to show images made for 4:3 aspect screens on a 16:9 aspect television</p> <p>Normal: Horizontally stretches images.</p> <p>Auto: Expands 4:3 letterbox images to fill more of the screen. Other images appear in full in the center of the screen.</p> <p>Shrink: Images appear in the center of the screen.</p> <p>Zoom: Expands all images to fill the screen.</p> <p>If your television has a similar feature, use it instead for a better effect.</p>
Just Fit Zoom	To select the appropriate screen size to fit your TV screen
Manual Zoom	To zoom in and out manually
Bit Rate Display	[RAM] [DVD-V] [VCD] [DVD-A] (Motion picture part) On ↔ Off
GUI See-through	Off, On, Auto
GUI Brightness	-3 to +3

Other Menu



Setup	(→ page 26)
Play as DVD-Video or Play as DVD-Audio	Select "Play as DVD-Video" to play DVD-Video contents of DVD-Audio.
Play as DVD-VR, Play as HighMAT or Play as Data Disc	Select "Play as Data Disc" to play JPEG files on DVD-RAM or to play a HighMAT disc without using the HighMAT function.

ENTER
≥10

SETUP
MUTING

QUICK SETUP enables successive settings of the items in the shaded area.

Audio Choose the audio language.	<input type="radio"/> English <input type="radio"/> French <input type="radio"/> Spanish <input type="radio"/> Original* ¹ <input type="radio"/> Other***** ²
Subtitle Choose the subtitle language.	<input type="radio"/> Automatic* ³ <input type="radio"/> English <input type="radio"/> French <input type="radio"/> Spanish <input type="radio"/> Other***** ²
Menus Choose the language for disc menus. Changing the menu language in QUICK SETUP also changes this setting.	<input type="radio"/> English <input type="radio"/> French <input type="radio"/> Spanish <input type="radio"/> Other***** ²
Advanced Disc Review (→ page 18)	<ul style="list-style-type: none"> ● Intro Mode: Reviews each title/program. ● Interval Mode: Reviews not only each title/program but also each 10 minute interval within a title/program.
Ratings Set a ratings level to limit DVD-Video play.	Setting ratings (When level 8 is selected) <input type="radio"/> 8 No Limit <input type="radio"/> 1 to 7 <input type="radio"/> 0 Lock All: To prevent play of discs without ratings levels. When you select your ratings level, a password screen is shown. Follow the on-screen instructions. Do not forget your password. A message screen will be shown if a DVD-Video exceeding the ratings level is inserted in the unit. Enter your password and then follow the on-screen instructions.

TV Aspect Choose the setting to suit your television and preference.	<input type="radio"/> 4:3 Pan&Scan: Regular aspect television (4:3) The sides of the widescreen picture are cut off so it fills the screen (unless prohibited by the disc).	
	<input type="radio"/> 4:3 Letterbox: Regular aspect television (4:3) Widescreen picture is shown in the letterbox style.	
	<input type="radio"/> 16:9: Widescreen television (16:9)	

<p>Mode</p> <p>to specify the type of television.</p>	<ul style="list-style-type: none"> Standard (Direct View TV) Projection TV 	<ul style="list-style-type: none"> CRT Projector Plasma TV 	<ul style="list-style-type: none"> LCD TV/Projector
<p>Delay</p> <p>connected with a Plasma TV, adjust if you notice the audio sync with the video.</p>	<ul style="list-style-type: none"> 0ms 20ms 40ms 60ms 80ms 100ms 		
<p>Mode</p> <p>the type of picture shown is selected.</p>	<ul style="list-style-type: none"> Automatic Field: The picture is not blurred, but picture quality is lower. Frame: Overall quality is high, but the picture may appear blurred. 		
<p>Level Control</p> <p>the black level of the picture if connected a television through the COMPONENT VIDEO OUT terminals.</p>	<ul style="list-style-type: none"> Lighter: When connected through VIDEO OUT or S-VIDEO OUT. Darker: When connected through COMPONENT VIDEO OUT (Y/Pb/Pr). 		

Audio" tab

<p>Dynamic Range Compression</p>	<ul style="list-style-type: none"> Off On: Adjusts for clarity even when the volume is low by compressing the range of the lowest sound level and the highest sound level. Convenient for late night viewing. (Only works with Dolby Digital)
<p>Center Settings (→ below)</p> <p>delay time for your center and surround speakers.</p>	<ul style="list-style-type: none"> Center: 0.0/1.0/2.0/3.0/4.0/5.0 ms Surround (L/R): 0.0/5.0/10.0/15.0 ms

Display" tab

<p>Language</p>	<ul style="list-style-type: none"> English Français Español
<p>Screen Messages</p>	<ul style="list-style-type: none"> On Off
<p>Power</p> <p>adjusts the brightness of the unit's LCD and Jog LED (HT930 HT933).</p>	<ul style="list-style-type: none"> Bright Dim (HT930 HT933 Jog LED turns off.) Auto: The display is dimmed, but brightens when you perform some operations. (HT930 HT933 Jog LED turns on when you perform some operations.)
<p>SETUP</p>	<ul style="list-style-type: none"> Yes No
<p>Initialize Setting</p> <p>returns all values in the Setup menu to the default settings.</p>	<ul style="list-style-type: none"> Yes: The password screen is shown if "Ratings" (→ page 26) is set. Please enter the same password. After "INIT" on the display disappears, turn the unit off and on again. No

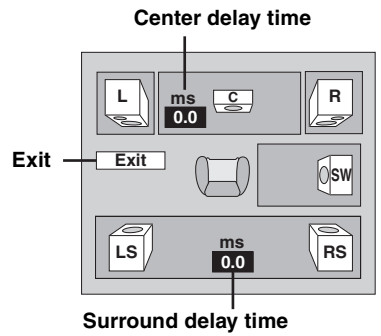
Changing the delay time (Speaker Settings)

when playing multi-channel audio
(surround and surround speakers only)

When listening with 5.1-channel sound, all the speakers, including the subwoofer, should be the same distance from the listening position. If you have to place the center or surround speakers closer to the seating position, adjust the delay time to compensate for the difference.

: Actual speakers position
 : Ideal speakers position
 a b c : Primary listening distance
 Approximate room dimensions

- Press [▲, ▼] to select the delay time box and press [ENTER].
- Press [▲, ▼] to adjust the delay time and press [ENTER].



constant primary listening distance

If the distance (a) or (b) is less than (c), find the difference in the distance and change to the recommended setting.

Center speaker		Surround speaker	
Distance (Approx.)	Setting	Difference (Approx.)	Setting
10 feet	1.0 ms	150 cm (5 feet)	5.0 ms
15 feet	2.0 ms	300 cm (10 feet)	10.0 ms
20 feet	3.0 ms	450 cm (15 feet)	15.0 ms
25 feet	4.0 ms		
30 feet	5.0 ms		

To finish the speaker setting
Press [◀] to select "Exit" and press [ENTER].

When you change the surround speaker setting for Dolby Digital, the setting also changes for Dolby Pro Logic II. e.g., the settings for MUSIC are the same as those for Dolby Digital.

Dolby Digital	Dolby Pro Logic II	
	MUSIC	MOVIE
0 ms	0 ms	10 ms
5 ms	5 ms	15 ms
10 ms	10 ms	20 ms
15 ms	15 ms	25 ms

Selecting the preset channels

CH 12

Main unit only

Manual

Main unit only

Main unit only

CH 12

■ FM frequency step

Main unit only

You can change the FM step. The step is factory-set to 0.2 MHz, but you can change it to receive broadcasts allocated in 0.1-MHz steps.

- 1 Press [INPUT SELECTOR] to select "FM".
- 2 Press and hold [INPUT SELECTOR].
After a few seconds the display changes to show the current minimum frequency. Continue to hold the button down. The minimum frequency changes and the step is changed.
To return to the original step, repeat the above steps.

Note

After changing the setting, previously preset frequency will be cleared. Preset it again.

Optional antenna connections

Use outdoor antennas if radio reception is poor.

- Disconnect the antenna when the unit is not in use.
- Do not use the outdoor antenna during an electrical storm.

The illustration shows SC-HT730 for U.S.A. and Canada.

FM outdoor antenna (Using a television antenna)

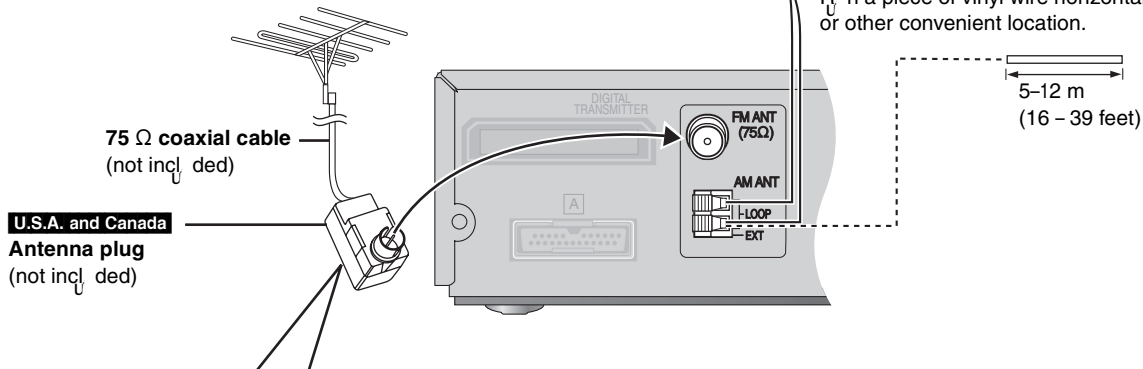
- Disconnect the FM indoor antenna.
 - The antenna should be installed by a competent technician.
- Rework your outdoor antenna's 75 Ω coaxial cable as follows.

Leave the AM loop antenna connected.

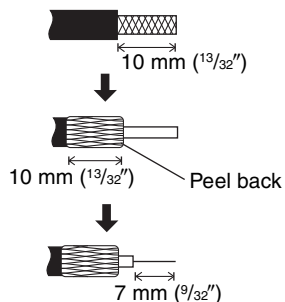
AM outdoor antenna (Using a vinyl wire)

Run a piece of vinyl wire horizontally across a window or other convenient location.

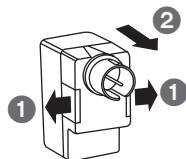
5-12 m
(16 - 39 feet)



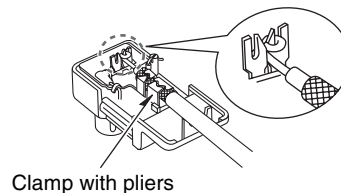
- ① Remove a piece of the outer vinyl insulator.



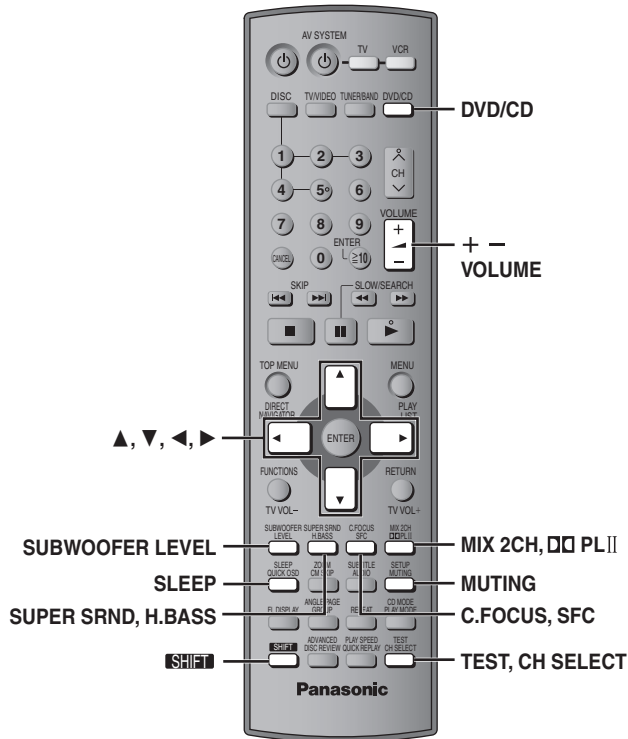
- ② Carefully pull the tabs apart to remove the cover.



- ③ Install the coaxial cable. Clamp the cable conductor, and wind it on so that it does not contact anything else.



- ④ Attach the cover.



- Note**
- When connected with headphones, the following sound field systems have no effect. (Excluding Surround Field Control)
 - You may experience a reduction in sound quality when these sound field systems are used with some sources. If this occurs, turn the sound field system off.
 - If you turn on Surround Surround, Dolby Pro Logic II is canceled and vice versa.

C.FOCUS SFC Sound Field Control

Changes the sound quality.

Press [SFC].

Each time you press the button:

FLAT: Cancel (no effect is added) (factory preset).

HEAVY: Adds punch to rock.

CLEAR: Clarifies higher sounds.

SOFT: For background music.

DISCO: Reverberates sound to make you feel like you are in a disco.

LIVE: Makes vocals more alive.

HALL: Expands sound to make you feel like you are in a hall.

To check the current setting
Press [SFC].

SHIFT SUPER SRND H.BASS Super Surround

Adds surround effects to stereo sound.

Press [SHIFT]+[SUPER SRND].

Each time you press the button:

MUSIC: Adds surround effects to stereo sources.

MOVIE: Use this mode when playing movie software.

PARTY: Sound is in stereo regardless of the direction you are facing.

OFF: Cancel

- You can adjust the volume of the surround speakers to get the best surround effect (→ page 31, Speaker level adjustments).
- Surround does not work when playing a DVD recorded with a multi-channel source.

SHIFT + C.FOCUS SFC Center Focus

(Discs where the dialogue is recorded in the center channel)
You can make the sound of the center speaker seem like it is coming from within the television.

Press [SHIFT]+[C.FOCUS].



Each time you press the button:
C FOCUS ON ↔ C FOCUS OFF

- This does not work when Surround Surround is turned on.
- This also works when Dolby Pro Logic II is turned on.

MIX 2CH DOLBY II Dolby Pro Logic II

Dolby Pro Logic II is an advanced decoder that derives 5-channel surround (Left and Right Front, Center, Left and Right Surround) from any stereo program material, whether or not it has been specifically Dolby Surround encoded.

Press [DOLBY II].

Each time you press the button:

MOVIE: Movie software, recorded in Dolby Surround.

MUSIC: Stereo sources

OFF: Cancel

- This works only in DVD/CD mode.
- "DOLBY II" lights when there is effect.



SHIFT + MIX 2CH DOLBY II Down-mixing

You can opt to the down-mixed 2 channel signals when necessary.

Press [SHIFT]+[MIX 2CH].

Each time you press the button:
MIX 2CH ON ↔ MIX 2CH OFF

- When "D.MIX" flashes on the display, the disc contains multiple-channel signals that cannot be down-mixed. **DVD-A**

SUPER SRND H.BASS Enhancing the bass sound

You can enhance low-frequency sound so that heavy bass sound can be heard clearly, even if the acoustics of your room are not optimal. The unit automatically selects the most suitable setting according to the type of playing source.

Press [H.BASS].

HT930 HT933 H.BASS indicator lights on the main unit.

- When DVD-Video or DVD-RAM is selected
H.BASS ON (factory preset) ↔ H.BASS OFF
- When another source is selected
H.BASS OFF (factory preset) ↔ H.BASS ON



The setting you make is retained, and recalled every time you play the same type of source.

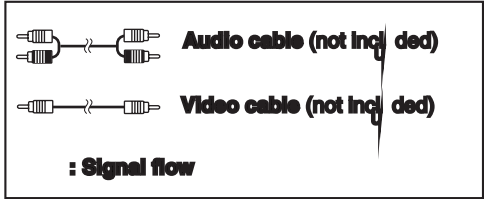
This station shows SC-HT930 for U.S.A. and Canada.

Television
(not included)

Video cassette recorder
(not included)

To show video from the video cassette recorder
Select "VIDEO 2" input on your television in this example.

To play audio from a video cassette recorder



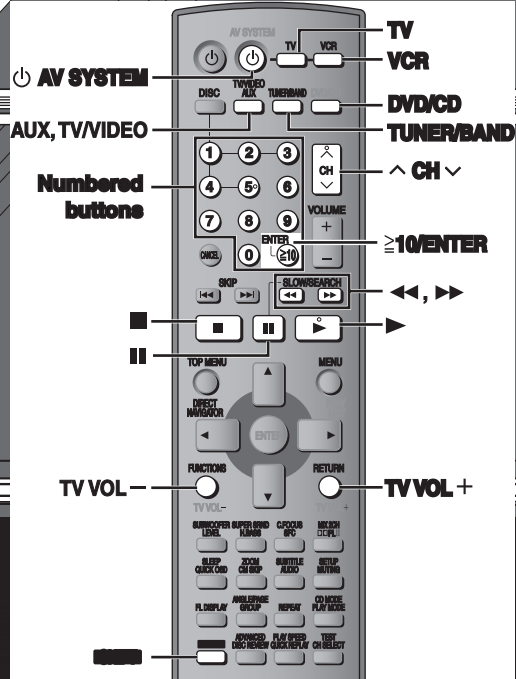
To play audio from the television
Reduce the volume on the television to its minimum and control the volume on this unit.

Already connected
(→ page 11)

HT930 HT930
To play audio from a tape deck

HT930 HT930
To record discs, radio broadcasts, etc. to a tape deck

Tape deck
(not included)



Operating the television and the video cassette recorder

Television

Video cassette recorder

Changing the remote control code

This remote control can also operate some other brands of televisions and video cassette recorders. Change the code to operate such equipment (→ below).

Aim the remote control at the equipment.

While pressing [TV] or [VCR]

Press a numbered button to enter the first digit, and then the second digit.

The remote control outputs the on/off signal. If the code is correct, the equipment turns on or off. If it doesn't, try entering another code.

Note

Reenter the codes after you change the batteries.

Operating the tape deck

(HT930 HT933 only)

Recording to the tape deck

- 1** Press [DVD/CD] to select "DVD/CD".
or
Press [TUNER/BAND] to select "FM" or "AM".
- 2** Start recording and play.

Listening to the tape deck

Press [AUX] to select "AUX" as the source.

Television code list

Panasonic: 01, 02, 26	Philco: 06, 07
Sony: 04	Philips: 06
Fisher: 14	Pioneer: 02, 10, 19
G-E: 02, 03, 07, 09	Quasar: 02
Gold Star: 07, 15	RCA: 03, 07, 09, 13, 23, 24, 25
Hitachi: 05, 07	Sanyo: 14
JVC: 12	Sharp: 08, 21
LXI: 03, 06, 07, 10, 14, 15	Sylvania: 06, 07, 15
Magnavox: 06, 07, 11, 15, 22	Symphonic: 17
Mitsubishi: 07, 15, 16, 21	Toshiba: 10, 21
NEC: 07, 15	Zenith: 18, 20

Video cassette recorder code list

Panasonic: 01, 02, 09, 33	NEC: 19, 25, 31, 38
Sony: 05, 06, 07, 35, 36, 37	Philco: 02, 09, 12, 30
Fisher: 13, 14, 15, 18, 34	Philips: 02, 09, 12
Funai: 08, 30	Pioneer: 09
G-E: 02, 03, 11	Quasar: 01, 02, 09, 33
Gold Star: 27	RCA: 02, 03, 04, 09, 10, 11, 12, 23, 24, 26
Hitachi: 09, 10, 11	Sanyo: 14, 18, 34
JVC: 19, 25, 31, 38, 39, 40	Sharp: 16, 17
LXI: 10, 13, 14, 15, 18, 27, 30	Shintom: 32
Magnavox: 02, 09, 12	Sylvania: 02, 09, 12, 30
Mitsubishi: 21, 22, 28, 29	Symphonic: 30
	Toshiba: 23, 24
	Zenith: 20

AMPLIFIER SECTION

HT730

RMS Output Power: Dolby Digital Mode

Front Ch	70 W per channel (4 Ω), 1 kHz, 10 % THD
Surround Ch	70 W per channel (4 Ω), 1 kHz, 10 % THD
Center Ch	260 W per channel (4 Ω), 1 kHz, 10 % THD
Subwoofer Ch	260 W per channel (4 Ω), 100 Hz, 10 % THD
Total RMS Dolby Digital mode power	800 W

FTC Output Power: Dolby Digital Mode

Front Ch	45 W per channel (4 Ω), 120 Hz–20 kHz, 1 % THD
Surround Ch	45 W per channel (4 Ω), 120 Hz–20 kHz, 1 % THD
Center Ch	140 W per channel (4 Ω), 120 Hz–20 kHz, 1 % THD
Subwoofer Ch	150 W per channel (4 Ω), 45 Hz–120 Hz, 1 % THD
Total FTC Dolby Digital mode power	470 W

HT733

RMS Output Power: Dolby Digital Mode

Front Ch	65 W per channel (4 Ω), 1 kHz, 10 % THD
Surround Ch	60 W per channel (4 Ω), 1 kHz, 10 % THD
Center Ch	250 W per channel (4 Ω), 1 kHz, 10 % THD
Subwoofer Ch	250 W per channel (4 Ω), 100 Hz, 10 % THD
Total RMS Dolby Digital mode power	750 W

FTC Output Power: Dolby Digital Mode

Front Ch	40 W per channel (4 Ω), 120 Hz–20 kHz, 1 % THD
Surround Ch	40 W per channel (4 Ω), 120 Hz–20 kHz, 1 % THD
Center Ch	130 W per channel (4 Ω), 120 Hz–20 kHz, 1 % THD
Subwoofer Ch	140 W per channel (4 Ω), 45 Hz–120 Hz, 1 % THD
Total FTC Dolby Digital mode power	430 W

HT930 HT933

RMS Output Power: Dolby Digital Mode

Front Ch	170 W per channel (6 Ω), 1 kHz, 10 % THD
Surround Ch	70 W per channel (4 Ω), 1 kHz, 10 % THD
Center Ch	260 W per channel (4 Ω), 1 kHz, 10 % THD
Subwoofer Ch	260 W per channel (4 Ω), 100 Hz, 10 % THD
Total RMS Dolby Digital mode power	1000 W

FTC Output Power: Dolby Digital Mode

Front Ch	100 W per channel (6 Ω), 120 Hz–20 kHz, 1 % THD
Surround Ch	45 W per channel (4 Ω), 120 Hz–20 kHz, 1 % THD
Center Ch	140 W per channel (4 Ω), 120 Hz–20 kHz, 1 % THD
Subwoofer Ch	150 W per channel (4 Ω), 45 Hz–120 Hz, 1 % THD
Total FTC Dolby Digital mode power	580 W

FM/AM TUNER, TERMINALS SECTION

Preset station

FM 15 stations
AM/MW 15 stations

Frequency Modulation (FM)

Frequency range	87.9–107.9 MHz (200-kHz step) 87.5–108.0 MHz (100-kHz step)
Sensitivity	2.5 μV (IHF)
S/N 26 dB	2.2 μV
Antenna terminals	75 Ω (unbalanced)

Amplitude Modulation (AM/MW)

Frequency range	520–1710 kHz (10-kHz step)
AM Sensitivity S/N 20 dB at 1000 kHz	560 μV/m

Phone jack

Terminal Stereo, 3.5 mm (1/8") jack

DISC SECTION

Discs played [8 cm (3") or 12 cm (5")]

- (1) DVD-RAM (DVD-VR compatible, JPEG formatted discs)
 - (2) DVD-Audio
 - (3) DVD-Video
 - (4) DVD-R, DVD-RW (DVD-Video compatible)
+R, +RW (Video compatible)
 - (5) CD-Audio (CD-DA)
 - (6) Video CD
 - (7) SVCD (Conforming to IEC62107)
 - (8) CD-R/RW (CD-DA, Video-CD, SVCD, MP3, WMA, JPEG formatted disc)
 - (9) MP3/WMA*1
 - Compatible compression rate:
MP3: between 32 kbps and 320 kbps
WMA: between 48 kbps and 320 kbps
 - (10) JPEG*1
 - Exif Ver 2.1 JPEG Baseline files
 - Picture resolution: between 320×240 and 6144×4096 pixels
(sub sampling is 4:2:2 or 4:2:0)
 - (11) HighMAT Level 2 (Audio and Image)
- *1 The total combined maximum number of recognizable audio and picture contents and groups: 4000 audio and picture contents and 400 groups.

Pick up

Wavelength		CD 785 nm
		DVD 662 nm
Laser power	U.S.A.	CLASS IIa/CLASS I
	Others	CLASS 2/CLASS 3A

Audio output (Disc)

Number of channels 5.1ch (FL, FR, C, SL, SR, SW)

HT930 HT933 Audio performance

- (1) Frequency response
 - DVD (linear audio) 4 Hz–22 kHz (48 kHz sampling)
 - 4 Hz–44 kHz (96 kHz sampling)
 - DVD-Audio 4 Hz–88 kHz (192 kHz sampling)
 - CD-Audio 4 Hz–20 kHz
- (2) S/N ratio
 - CD-Audio 95 dB
- (3) Dynamic range
 - DVD (linear audio) 95 dB
 - CD-Audio 93 dB
- (4) Total harmonic distortion
 - CD-Audio 0.005 %

VIDEO SECTION

Video system

Signal system NTSC

Composite video output

Output level 1 Vp-p (75 Ω)
Terminal Pin jack (1 system)

S-video output

Y output level 1 Vp-p (75 Ω)
C output level NTSC; 0.286 Vp-p (75 Ω)
Terminal S terminal (1 system)

Component video output (480p/480i)

Y output level 1 Vp-p (75 Ω)
P_B output level 0.7 Vp-p (75 Ω)
P_R output level 0.7 Vp-p (75 Ω)
Terminal Pin jack (Y: green, P_B: blue, P_R: red) (1 system)

SUBWOOFER SECTION

HT730 Active subwoofer SB-WA730

Type 1 way, 2 speaker system (Bass reflex)

Speaker unit(s)

1. Woofer 13 cm (5¹/₈" Cone type
2. Woofer 13 cm (5¹/₈" Cone type

Output sound pressure

80 dB/W (1.0 m)

Frequency range

40 Hz–220 Hz (–16 dB)
45 Hz–180 Hz (–10 dB)

Dimensions (W×H×D)

201.5 mm×368.2 mm×491.5 mm
(7¹⁵/₁₆"×14¹/₂"×19³/₈"

Mass

11.3 kg (24.9 lbs)

HT733 Active subwoofer SB-WA733

Type 1 way, 2 speaker system (Bass reflex)

Speaker unit(s)

1. Woofer 13 cm (5¹/₈" Cone type
2. Woofer 13 cm (5¹/₈" Cone type

Output sound pressure

80 dB/W (1.0 m)

Frequency range

40 Hz–220 Hz (–16 dB)
45 Hz–180 Hz (–10 dB)

Dimensions (W×H×D)

201.5 mm×368.2 mm×491.5 mm
(7¹⁵/₁₆"×14¹/₂"×19³/₈"

Mass

11.3 kg (24.9 lbs)

HT930 Active subwoofer SB-WA930

HT933 Active subwoofer SB-WA933

Type 1 way, 2 speaker system (Bass reflex)

Speaker unit(s)

1. Woofer 15 cm (5⁷/₈" Cone type
2. Woofer 15 cm (5⁷/₈" Cone type

Output sound pressure

84 dB/W (1.0 m)

Frequency range

34 Hz–220 Hz (–16 dB)
38 Hz–190 Hz (–10 dB)

Dimensions (W×H×D)

285 mm×402 mm×520 mm
(11⁷/₃₂"×15¹³/₁₆"×20¹⁵/₃₂"

Mass

15 kg (33.1 lbs)

SPEAKER SECTION

HT730 HT733 Front speakers SB-FS730

Type 2 way, 2 speaker system (Bass reflex)

Speaker unit(s)

1. Woofer 6.5 cm (2¹/₂" Cone type
2. Tweeter 6 cm (2³/₈" Cone type

Input power (IEC)

70 W (Max)

Output sound pressure

81 dB/W (1.0 m)

Cross over frequency

6 kHz

Frequency range

80 Hz–41 kHz (–16 dB)
95 Hz–40 kHz (–10 dB)

Dimensions (W×H×D)

218 mm×1080 mm (max)/984 mm (min)×243 mm
[8¹⁹/₃₂"×42¹/₂" (max)/38³/₄" (min)×9⁹/₁₆"

Mass

2.7 kg (6 lbs)

HT730 HT733 Surround speakers SB-FS731

Type 1 way, 1 speaker system (Bass reflex)

Speaker unit(s)

Impedance 4 Ω

Full range 6.5 cm (2¹/₂" Cone type

Input power (IEC)

70 W (Max)

Output sound pressure

80 dB/W (1.0 m)

Frequency range

88 Hz–25 kHz (–16 dB)
100 Hz–22 kHz (–10 dB)

Dimensions (W×H×D)

90 mm×193 mm×102 mm
(3¹⁷/₃₂"×7¹⁹/₃₂"×4¹/₃₂"

Mass

0.7 kg (1.54 lbs)

HT730 HT733 Center speaker SB-PC730

Type 2 way, 3 speaker system (Bass reflex)

Speaker unit(s)

1. Full range 6.5 cm (2¹/₂" Cone type
2. Full range 6.5 cm (2¹/₂" Cone type
3. Super tweeter Piezo type

Input power (IEC)

260 W*2 (Max)

Output sound pressure

83 dB/W (1.0 m)

Cross over frequency

10 kHz

Frequency range

103 Hz–25 kHz (–16 dB)
116 Hz–22 kHz (–10 dB)

Dimensions (W×H×D)

320 mm×88 mm×96 mm
(12¹⁹/₃₂"×3¹⁵/₃₂"×3²⁵/₃₂"

Mass

1.3 kg (2.9 lbs)

HT930 Front speakers SB-FS930

Type 2 way, 3 speaker system (Bass reflex)
Speaker unit(s) Impedance 6 Ω
 1. Woofer 8 cm (3¹/₈") Cone type
 2. Woofer 8 cm (3¹/₈") Cone type
 3. Tweeter 6 cm (2³/₈") Ring shaped dome type
Input power (IEC) 170 W^{≅2} (Max)
Output sound pressure 84 dB/W (1.0 m)
 Cross over frequency 7 kHz
Frequency range 75 Hz–50 kHz (– 16 dB)
 90 Hz–45 kHz (– 10 dB)
Dimensions (W×H×D) 260 mm×1234 mm×270 mm
 (10¹/₄" × 48¹⁹/₃₂" × 10²¹/₃₂")
Mass 4.35 kg (9.6 lbs)

HT930 Surround speakers SB-FS931

Type 2 way, 2 speaker system (Bass reflex)
Speaker unit(s) Impedance 4 Ω
 1. Woofer 8 cm (3¹/₈") Cone type
 2. Tweeter 6 cm (2³/₈") Ring shaped dome type
Input power (IEC) 70 W (Max)
Output sound pressure 80 dB/W (1.0 m)
 Cross over frequency 5 kHz
Frequency range 70 Hz–50 kHz (– 16 dB)
 85 Hz–45 kHz (– 10 dB)
Dimensions (W×H×D) 100 mm×324 mm×112 mm
 (3¹⁵/₁₆" × 12²⁵/₃₂" × 4¹³/₃₂")
Mass 1.06 kg (2.34 lbs)

HT930 Center speaker SB-PC930

Type 2 way, 3 speaker system (Bass reflex)
Speaker unit(s) Impedance 4 Ω
 1. Woofer 6.5 cm (2¹/₂") Cone type
 2. Woofer 6.5 cm (2¹/₂") Cone type
 3. Tweeter 6 cm (2³/₈") Ring shaped dome type
Input power (IEC) 260 W^{≅2} (Max)
Output sound pressure 82 dB/W (1.0 m)
 Cross over frequency 5 kHz
Frequency range 110 Hz–50 kHz (– 16 dB)
 140 Hz–45 kHz (– 10 dB)
Dimensions (W×H×D) 320 mm×88 mm×96 mm
 (12¹⁹/₃₂" × 3¹⁵/₃₂" × 3²⁵/₃₂")
Mass 1.36 kg (3 lbs)

HT933 Front speakers SB-PF920

Type 2 way, 3 speaker system (Bass reflex)
Speaker unit(s) Impedance 6 Ω
 1. Woofer 6.5 cm (2¹/₂") Cone type
 2. Woofer 6.5 cm (2¹/₂") Cone type
 3. Tweeter 6 cm (2³/₈") Ring shaped dome type
Input power (IEC) 170 W^{≅2} (Max)
Output sound pressure 83 dB/W (1.0 m)
 Cross over frequency 7 kHz
Frequency range 92 Hz–50 kHz (– 16 dB)
 110 Hz–45 kHz (– 10 dB)
Dimensions (W×H×D) 240 mm×1138 mm (Max)/678 mm (Min)×240 mm
 [9⁷/₁₆" × 44¹³/₁₆" (Max)/26¹¹/₁₆" (Min) × 9⁷/₁₆"]
 Speaker height adjustment range: 1138–968 mm (44¹³/₁₆" – 38¹/₈")
 796–625 mm (31¹¹/₃₂" – 24¹⁹/₃₂")
 [However, the height of the stand is fixed at 678 mm (26¹¹/₁₆").]
Mass 4.1 kg (9 lbs)

HT933 Surround speakers SB-PS920

Type 2 way, 2 speaker system
Speaker unit(s) T T _ Tf Tc Tw Td ltm

Troubleshooting guide

Before requesting service, make the following checks. If you are in doubt about some of the check points, or if the solutions indicated in the chart do not solve the problem, refer to the "Customer Services Directory" on page 39 if you reside in the U.S.A., or refer to the "Product information" on page 38 if you reside in Canada. In other areas, consult your dealer.

Power		Page
No power.	• Insert the AC power supply cord and system cable securely.	12
The unit is automatically switched to the standby mode.	• The Sleep timer was working and had reached the set time limit.	31

Unresponsive or inoperable function

No response when any buttons are pressed.	<ul style="list-style-type: none"> This unit cannot play discs other than the ones listed in these operating instructions. The unit may not be operating properly due to lightning, static electricity or some other external factor. Turn the unit off and then back to ON. Alternatively, turn the unit off, disconnect the AC power supply cord, and then reconnect it. Condensation has formed: Wait 1 to 2 hours for it to evaporate. 	15 —
No response when remote control buttons are pressed.	<ul style="list-style-type: none"> Check that the batteries are installed correctly. The batteries are depleted. Replace them with new ones. Aim the remote control at the remote control signal sensor and operate. 	13 13 14
Cannot play DVD's.	• CD Mode is on. Press [SHIFT]+[CD MODE] to turn CD Mode off.	18
No picture or sound.	<ul style="list-style-type: none"> Check the video or audio connection. Check the power or input setting of the connected equipment. Check that the DVD-RAM has something recorded on it. 	4, 5, 7, 10, 11, 32 — —
You have forgotten your ratings password. Reset all the settings to Factory Preset.	• While stopped and "DVD/CD" is the source, press and hold [■] on the main unit and [≥10] on the remote control until "Initialized" disappears from the television. Turn the unit off and on again. All settings will return to the default values.	—

Specific operation undesirable or unexpected

It takes time before play starts. MP3	• Play may take time to begin when an MP3 track has still picture data. Even after the track starts, the correct play time will not be displayed. This is normal.	—
Folders deeper than the eighth layer on a data CD are not displayed correctly. WMA MP3 JPEG	• Folders deeper than the eighth layer are displayed as the eighth layer.	—
A menu screen appears during skip or search. VCD	• This is normal for Video CD's.	—
Playback control menu doesn't appear. VCD with playback control	• Press [■] twice and then press [▶] (play).	—
The program and random play functions do not work. DVD-V	• These functions do not work with some DVD-Videos.	—
Programmed items are not played. DVD-V	• Some items cannot be played even if you have programmed them.	—
The on-screen menu shows "2" as a soundtrack option when [AUDIO] is pressed, but the audio does not change. DVD-A	• Even if a second soundtrack isn't recorded, two numbers will normally be shown.	—
Play restarts from the beginning of the track when soundtrack is changed. DVD-A	• This is normal on DVD-Audio.	—
Scenes are skipped intermittently. RAM DVD-V	• If you change the volume or sound field/quality setting during ADVANCED DISC REVIEW, the function continues without the on-screen display. Press [ADVANCED DISC REVIEW] again to cancel the function.	18

Subtitle

Subtitle position is wrong.	• Adjust the position. ("Subtitle Position" in Display Menu)	25
No subtitles.	• Display the subtitles.	19
The subtitles overlap closed captions recorded on discs.	• Clear the subtitles.	19

Marker

Cannot add markers.	<ul style="list-style-type: none"> You cannot add markers with DVD-RAM. If the disc's elapsed play time doesn't appear on the unit's display, you cannot add markers. 	— —
---------------------	---	--------

A-B repeat

Point B is automatically set.	• The end of an item becomes point B when it is reached.	—
A-B repeat is automatically canceled.	• A-B repeat is canceled when you press [QUICK REPLAY].	—

Sound abnormal or improper

Sound distorted.	• Noise may occur when playing WMA.	—
Effects do not work.	<ul style="list-style-type: none"> Some audio effects do not work or have less effect with some discs. Multi Re-master (HT930 HT933 only) and Dolby Pro Logic II do not work if you have changed the play speed. 	— —
Humming is heard during play.	• An AC power supply cord or fluorescent light is near the subwoofer. Keep other appliances and cables away from the subwoofer.	—
No sound	• There may be a pause in sound when you change the play speed.	—

The Setup menu cannot be accessed.	<ul style="list-style-type: none"> ● Select "DVD/CD" as the source. ● Cancel program and random play. 	— 20
------------------------------------	---	---------

Picture abnormal or unviewable

Picture distorted.	<ul style="list-style-type: none"> ● Ensure that the unit is connected directly to the television, and is not connected through a video cassette recorder. 	11
Picture size doesn't fit the screen.	<ul style="list-style-type: none"> ● Change "TV Aspect" in the "Video" tab. ● Use the television to change the aspect. If your television does not have that function, change "4:3 Aspect" in Display Menu. ● Change the Zoom setting. 	26 25 19
Menu is not displayed correctly.	<ul style="list-style-type: none"> ● Restore the zoom ratio to "× 1.00". ● Set "Subtitle Position" in Display Menu to "0". ● Set "4:3 Aspect" in Display Menu to "Normal". 	19 25 25
Auto zoom function does not work well.	<ul style="list-style-type: none"> ● Turn off TV's zoom function. ● Use the other preset aspect ratios or manual adjustment. ● Zoom function may not work well, especially in dark scenes and may not work depending on the type of disc. 	— 19 —
The picture on the television disappears or stripes appear on the screen.	<ul style="list-style-type: none"> ● Mobile telephone chargers can cause some disturbance. ● If you are using a TV indoor antenna, change to an outdoor antenna. ● The television antenna wire is too close to the unit. Separate the antenna wire of the television from the unit. 	— — —

Progressive video

There is ghosting when progressive output is on.	<ul style="list-style-type: none"> ● This problem is caused by the editing method or material used on DVD-Video, but should be corrected if you use interlace output. Change "Video Output Mode" in Picture Menu to "480i". 	25
Pictures not in progressive output.	<ul style="list-style-type: none"> ● Press [PROGRESSIVE] on the main unit so "PRG" is displayed. Or select "480p" in "Video Output Mode" in Picture Menu. ● If the unit is connected to the television through VIDEO OUT or S-VIDEO OUT terminal, output will be interlace even if "PRG" is displayed. 	16, 25 11
Closed captions not displayed.	<ul style="list-style-type: none"> ● When progressive output is on, closed captions will not be displayed. 	—

Listening to the radio

Noise is heard. "ST" flickers or doesn't light. Sound is distorted.	<ul style="list-style-type: none"> ● Adjust the position of the FM or AM antenna. ● Use an outdoor antenna. 	— 29
A beat sound is heard.	<ul style="list-style-type: none"> ● Turn the television off or move it away from the unit. 	—
A low hum is heard during AM broadcasts.	<ul style="list-style-type: none"> ● Separate the antenna from other cables. 	—

Television operation

Cannot operate the TV.	<ul style="list-style-type: none"> ● Press [TV] first to operate the television. ● Check the remote control code for the TV manufacturer. 	— 33
------------------------	---	---------

Unit displays

The display is dark.	<ul style="list-style-type: none"> ● Select "Bright" in "FL Dimmer" in the "Others" tab. 	27
"NOPLAY"	<ul style="list-style-type: none"> ● You inserted a disc the unit cannot play; insert one it can. ● You inserted a blank disc. 	15 —
"NODISC"	<ul style="list-style-type: none"> ● You haven't inserted a disc; insert one. ● You haven't inserted the disc correctly; insert it correctly. 	— 16
"F61"	<ul style="list-style-type: none"> ● Check and correct the speaker cord connections. If this does not fix the problem, there is a power supply problem. Consult the dealer. 	4, 5, 7, 10
"DVD U11"	<ul style="list-style-type: none"> ● Disc is dirty. Wipe it clean. 	15
"ERROR"	<ul style="list-style-type: none"> ● Incorrect operation performed. Read the instructions and try again. 	—
"DVD H□□" □□ stands for a number.	<ul style="list-style-type: none"> ● Trouble may have occurred. The number following "H" depends on the status of the unit. Turn the unit off and then back to ON. Alternatively, turn the unit off, disconnect the AC power supply cord, and then reconnect it. ● If the service numbers fail to clear, note the service number and contact a qualified service person. 	— —
"[W]" is flashing. (When using optional SH-FX50)	<ul style="list-style-type: none"> ● There is no link between the main unit and the receiver. Check that the receiver is turned on. ● Ensure that the digital transmitter is fully inserted into the slot of the main unit. 	— —
"W01" is flashing or lit. (When using optional SH-FX50)	<ul style="list-style-type: none"> ● Re-initialize the main unit: While stopped and "DVD/CD" is the source, press and hold [■] on the main unit and [≥10] on the remote control until "Initialized" disappears from the television. Turn the unit off and on again. If the problem persists, contact a qualified service person. 	—

Television displays

"⊙"	<ul style="list-style-type: none"> ● The operation is prohibited by the unit or disc. 	—
"Cannot display group xx, content xx"	<ul style="list-style-type: none"> ● You are trying to display incompatible contents. 	—
"This disc may not be played in your region"	<ul style="list-style-type: none"> ● You can only play DVD-Video if their region number is the same or includes the same region number as the unit or if the DVD-Video is marked "ALL". Confirm the region number for the unit on the rear panel. 	Cover page
No on-screen display.	<ul style="list-style-type: none"> ● Select "On" in "On-Screen Messages" in the "Display" tab. 	27

- Damage requiring service**—The unit should be serviced by qualified service personnel if:
 - The AC power supply cord or AC adaptor has been damaged; or
 - Objects or liquids have gotten into the unit; or
 - The unit has been exposed to rain; or
 - The unit does not operate normally or exhibits a marked change in performance; or
 - The unit has been dropped or the cabinet damaged.
- Servicing**—Do not attempt to service the unit beyond that described in these operating instructions. Refer all other servicing to an authorized servicing personnel.
- Replacement parts**—When parts need replacing, ensure the service uses parts specified by the manufacturer or parts that have the same characteristics as the original parts. Unauthorized substitutes may result in fire, electric shock, or other hazards.
- Safety check**—After repairs or service, ask the servicer to perform safety checks to confirm that the unit is in proper working condition.

The servicer will require all components to service your system. Therefore, should service ever be necessary, be sure to bring the entire system.

Product information

For product information or assistance with product operation:

In the U.S.A., refer to "Customer Services Directory" on page 39. In Canada, contact the Panasonic Canada Inc. Customer Care Centre at 1-800-561-5505, or visit the website (www.panasonic.ca), or an authorized Servicentre closest to you. In other areas, consult your dealer.

Maintenance

Clean this unit with a soft, dry cloth.

- Never use alcohol, paint thinner or benzene to clean this unit.
- Before using chemically treated cloth, carefully read the instructions that came with the cloth.

Do not use commercially available lens cleaners as they may cause malfunction. (Cleaning of the lens is generally not necessary although this depends on the operating environment.)

Before moving the unit, ensure the disc trays are empty.

Failure to do so will risk severely damaging the discs and the unit.

Decoder

A decoder restores the coded audio signals on DVD's to normal. This is called decoding.

Dolby Digital

This is a method of coding digital signals developed by Dolby Laboratories. Apart from stereo (2-channel) audio, these signals can also be multi-channel audio. A large amount of audio information can be recorded on one disc using this method.

DTS (Digital Theater Systems)

This surround system is used in many movie theaters around the world. There is good separation between the channels, so realistic sound effects are possible.

Dynamic range

Dynamic range is the difference between the lowest level of sound that can be heard above the noise of the equipment and the highest level of sound before distortion occurs.

Frame still and field still

Frames are the still pictures that go together to make a moving picture. There are about 30 frames shown each second. One frame is made up of two fields. A regular television shows these fields one after the other to create frames.

A still is shown when you pause a moving picture. A frame still is made up of two alternating fields, so the picture may appear blurred, but overall quality is high.

A field still is not blurred, but it has only half the information of a frame still so picture quality is lower.

I/P/B

MPEG-2, the video compression standard adopted for use with DVD-Video, codes frames using these 3 picture types.

I: Intra coded picture

This picture has the best quality and is the best to use when adjusting the picture.

P: Predictive coded picture

This picture is calculated based on past I or P-picture.

B: Bidirectionally-predictive coded picture

This picture is calculated by comparing past and future I and P-pictures so it has the lowest volume of information.

Linear PCM (pulse code modulation)

These are uncompressed digital signals, similar to those found on CDs.

Playback control (PBC)

If a Video CD has playback control, you can select scenes and information with menus.

Sampling frequency

Sampling is the process of converting the heights of sound wave (analog signal) samples taken at set periods into digits (digital encoding). Sampling frequency is the number of samples taken per second, so larger numbers mean more faithful reproduction of the original sound.

Language code list

Abkhazian: 6566	Chinese: 9072	Ha sa: 7265	Lithuanian: 7684	Romanian: 8279	Telugu: 8469
Afar: 6565	Corsican: 6779	Hebrew: 7387	Macedonian: 7775	Russian: 8285	Thai: 8472
Afrikaans: 6570	Croatian: 7282	Hindi: 7273	Malagasy: 7771	Samoa: 8377	Tibetan: 6679
Albanian: 8381	Czech: 6783	Hungarian: 7285	Malay: 7783	Sanskrit: 8365	Tigrinya: 8473
Ameharic: 6577	Danish: 6865	Icelandic: 7383	Malayalam: 7776	Scots Gaelic: 7168	Tonga: 8479
Arabic: 6582	Dutch: 7876	Indonesian: 7378	Maltese: 7784	Serbian: 8382	Turkish: 8482
Armenian: 7289	English: 6978	Interlingua: 7365	Maori: 7773	Serbo-Croatian: 8372	Turkmen: 8475
Assamese: 6583	Esperanto: 6979	Irish: 7165	Marathi: 7782	Shona: 8378	Twi: 8487
Aymara: 6589	Estonian: 6984	Italian: 7384	Moldavian: 7779	Sindhi: 8368	Ukrainian: 8575
Azerbaijani: 6590	Faroese: 7079	Japanese: 7465	Mongolian: 7778	Singhalese: 8373	Urdu: 8582
Bashkir: 6665	Fiji: 7074	Javanese: 7487	Nauru: 7865	Slovak: 8375	Uzbek: 8590
Basque: 6985	Finnish: 7073	Kannada: 7578	Nepali: 7869	Slovenian: 8376	Vietnamese: 8673
Bengali; Bangla: 6678	French: 7082	Kashmiri: 7583	Norwegian: 7879	Somali: 8379	Volapuk: 8679
Bhutanese: 6890	Frisian: 7089	Kazakh: 7575	Oriya: 7982	Spanish: 6983	Welsh: 6789
Bihari: 6672	Galician: 7176	Kirghiz: 7589	Pashto, Pushto: 8083	Sri Lankan: 8385	Wolof: 8779
Breton: 6682	Georgian: 7565	Korean: 7579	Persian: 7065	Swahili: 8387	Xhosa: 8872
Bulgarian: 6671	German: 6869	Kurdish: 7585	Polish: 8076	Swedish: 8386	Yiddish: 7473
Burmese: 7789	Greek: 6976	Laotian: 7679	Portuguese: 8084	Tagalog: 8476	Yoruba: 8979
Byelorussian: 6669	Greenlandic: 7576	Latin: 7665	Punjabi: 8065	Tajik: 8471	Zulu: 9085
Cambodian: 7577	Guarani: 7178	Latvian, Lettish: 7686	Quechua: 8185	Tamil: 8465	
Catalan: 6765	Gujarati: 7185	Lingala: 7678	Rhaeto-Romance: 8277	Tatar: 8484	

Limited Warranty (ONLY FOR U.S.A.)

Panasonic Consumer Electronics Company,
Division of Panasonic Corporation of North America
One Panasonic Way Secaucus, New Jersey 07094

Panasonic Puerto Rico, Inc.
Ave. 65 de Infantería, Km. 9.5
San Gabriel Industrial Park, Carolina, Puerto Rico 00985

Panasonic Audio Products Limited Warranty

Limited Warranty Coverage

If your product does not work properly because of a defect in materials or workmanship, Panasonic Consumer Electronics Company or Panasonic Puerto Rico, Inc. (collectively referred to as "the warrantor") will, for the length of the period indicated on the chart below, which starts with the date of original purchase ("warranty period"), at its option either (a) repair your product with new or refurbished parts, or (b) replace it with a new or a refurbished product. The decision to repair or replace will be made by the warrantor.

Product or Part Name	Parts	Labor
Audio Products (except items listed below)	One (1) year	One (1) year
USB Reader-Writer, Personal Computer Card Adapters (in exchange for defective item)	One (1) year	Not Applicable
Accessories: Headphones, Cartridges, Microphones, Adapters	Ninety (90) days	Ninety (90) days
Rechargeable Batteries, DVD-R/-RAM Discs (in exchange for defective item)	Ten (10) days	Not Applicable
SD Memory Cards, Rechargeable Battery Packs (in exchange for defective item)	Ninety (90) days	Not Applicable

During the "Labor" warranty period there will be no charge for labor. During the "Parts" warranty period, there will be no charge for parts. You may still carry-in or mail-in your product during the warranty period. If non-rechargeable batteries are included, they are not warranted. This warranty only applies to products purchased and serviced in the United States or Puerto Rico. This warranty is extended only to the original purchaser of a new product which was not sold "as is". A purchase receipt or other proof of the original purchase date is required for warranty service.

Carry-In or Mail-In Service

For Carry-In or Mail-In Service in the United States call 1-800-211-PANA (1-800-211-7262) or visit Panasonic web site: <http://www.panasonic.com>
For assistance in Puerto Rico call Panasonic Puerto Rico, Inc. (787)-750-4300 or fax (787)-768-2910.

Limited Warranty Limits And Exclusions

This warranty ONLY COVERS failures due to defects in materials or workmanship, and DOES NOT COVER normal wear and tear or cosmetic damage. The warranty ALSO DOES NOT COVER damages which occurred in shipment, or failures which are caused by products not supplied by the warrantor, or failures which result from accidents, misuse, abuse, neglect, mishandling, misapplication, alteration, faulty installation, setup adjustments, misadjustment of consumer controls, improper maintenance, power line surge, lightning damage, modification, or commercial use (such as in a hotel, office, restaurant, or other business), rental use of the product, service by anyone other than a Factory Servicenter or other Authorized Servicer, or damage that is attributable to acts of God.

THERE ARE NO EXPRESS WARRANTIES EXCEPT AS LISTED UNDER "LIMITED WARRANTY COVERAGE". THE WARRANTOR IS NOT LIABLE FOR INCIDENTAL OR CONSEQUENTIAL DAMAGES RESULTING FROM THE USE OF THIS PRODUCT, OR ARISING OUT OF ANY BREACH OF THIS WARRANTY. (As examples, this excludes damages for lost time, travel to and from the servicer, loss of media or images, data or other memory content. The items listed are not exclusive, but are for illustration only.) **ALL EXPRESS AND IMPLIED WARRANTIES, INCLUDING THE WARRANTY OF MERCHANTABILITY, ARE LIMITED TO THE PERIOD OF THE LIMITED WARRANTY.**

Some states do not allow the exclusion or limitation of incidental or consequential damages, or limitations on how long an implied warranty lasts, so the exclusions may not apply to you. This warranty gives you specific legal rights and you may also have other rights which vary from state to state. If a problem with this product develops during or after the warranty period, you may contact your dealer or Servicenter. If the problem is not handled to your satisfaction, then write to the warrantor's Consumer Affairs Department at the addresses listed for the warrantor.

PARTS AND SERVICE WHICH ARE NOT COVERED BY THIS LIMITED WARRANTY ARE YOUR RESPONSIBILITY.

Customer Services Directory

Obtain Product Information and Operating Assistance; locate your nearest Dealer or Servicenter; purchase Parts and Accessories; or make Customer Service and Literature requests by visiting our Web Site at:

<http://www.panasonic.com/consumersupport>

or, contact us via the web at:

<http://www.panasonic.com/contactinfo>

You may also contact us directly at:

1-800-211-PANA (7262),

Monday-Friday 9 am-9 pm; Saturday-Sunday 10 am-7 pm, EST.

For hearing or speech impaired TTY users, TTY : 1-877-833-8855

Accessory Purchases

Purchase Parts, Accessories and Instruction Books online for all Panasonic Products by visiting our Web Site at:

<http://www.pasc.panasonic.com>

or, send your request by E-mail to:

npcparts@us.panasonic.com

You may also contact us directly at:

1-800-332-5368 (Phone) 1-800-237-9080 (Fax Only) (Monday - Friday 9 am to 8 pm, EST.)

Panasonic Services Company

20421 84th Avenue South, Kent, WA 98032

(We Accept Visa, MasterCard, Discover Card, American Express, and Personal Checks)

For hearing or speech impaired TTY users, TTY : 1-866-605-1277

Service in Puerto Rico

Panasonic Puerto Rico, Inc.

Ave. 65 de Infantería, Km. 9.5, San Gabriel Industrial Park, Carolina, Puerto Rico 00985

Phone (787)750-4300, Fax (787)768-2910

Limited Warranty (ONLY FOR U.S.A.)

Listening caution



Accessories



Please check and identify the supplied accessories. Use numbers indicated in parentheses when asking for replacement parts. (Product numbers correct as of December 2004. These may be subject to change.)

Only for U.S.A.: To order accessories, refer to "Accessory Purchases" on page 39.

For other areas: To order accessories, call the dealer from whom you made your purchase.

- 1 Remote control**
HT730 HT733 (EUR7722XB0)
HT930 HT933 (EUR7722XD0)



- 2 Remote control batteries**



- 1 Video cable**
(K2KA2BA00001)



- 1 System cable**
(K1HA25HA0001)



- 1 AM loop antenna**
(N1DAAAA00001)



- 1 AC power supply cord**
U.S.A. and Canada
(K2CB2CB00018)

Others
(K2CQ2CA00002)

- 1 FM indoor antenna**
(RSA0007-L)

- 3 Speaker cables**
1×short cable
HT730 HT733 (REEX0449B-1)
HT930 HT933 (REEX0501B-J)

2×long cables
HT730 HT733 (REEX0449E-1)
HT930 (REEX0501E)
HT933 (REEX0501E-J)

- 1 Sheet of speaker-cable stickers**

- 2 Pipes (A)** HT730 HT733
(RYBX0095-S)

- 2 Pipes (B)** HT730 HT733
(RMAX0076-S)

- 2 Bases** HT730 HT733
(RYQX0198-S)

- 4 Washer screws**
HT730 HT733
(XTW5+10LFJ)

- 4 Small screws** HT730 HT733
(XTB3+8JFJ)

- 4 Bracket screws**
HT730 HT733
(XSN5+10FJ)

- 2 Brackets** HT730 HT733
(RYQX0205-S)

- 1 Sheet of rubber pads**
HT730 HT733
(RKAX0025-K)

- 2 Pipes** HT930
(RYQX0190-S)

- 2 Bases** HT930
(RYQX0191-S)

- 4 Long screws** HT930
(XSN5+32FJ)

- 4 Short screws** HT930
(RHD30090-1)

- 2 Pipes** HT933
(RYQ0463-S)

- 2 Bases** HT933
(RYQ0470-S)

- 4 Large screws** HT933
(XSS6+14FJ)

- 4 Small screws** HT933
(XSN5+10FJ)

For areas except U.S.A. and Canada

- 1 Power plug adaptor**
(K2DA42E00001)

Free Manuals Download Website

<http://myh66.com>

<http://usermanuals.us>

<http://www.somanuals.com>

<http://www.4manuals.cc>

<http://www.manual-lib.com>

<http://www.404manual.com>

<http://www.luxmanual.com>

<http://aubethermostatmanual.com>

Golf course search by state

<http://golfingnear.com>

Email search by domain

<http://emailbydomain.com>

Auto manuals search

<http://auto.somanuals.com>

TV manuals search

<http://tv.somanuals.com>