

Mini HiFi System

FWM779

User manual

Manuel d'utilisation

Manual del usuario



Need help? Call us!

Philips representatives are ready to help you with any questions about your new product. We can guide you through Connections, First-time Setup, or any of the Features. We want you to start enjoying your new product right away!

**CALL US BEFORE YOU CONSIDER
RETURNING THE PRODUCT!**

1-800-531-0039

or

Visit us on the web at www.philips.com



PHILIPS

Canada

English:

This digital apparatus does not exceed the Class B limits for radio noise emissions from digital apparatus as set out in the Radio Interference Regulations of the Canadian Department of Communications.

Français:

Cet appareil numérique n'émet pas de bruits radioélectriques dépassant les limites applicables aux appareils numériques de Classe B prescrites dans le Règlement sur le Brouillage Radioélectrique édicté par le Ministère des Communications du Canada.

This warning label is located on the rearside and inside this laser product.

CAUTION INVISIBLE LASER RADIATION WHEN OPEN. DO NOT STARE INTO BEAM.

DANGER INVISIBLE LASER RADIATION WHEN OPEN. AVOID DIRECT EXPOSURE TO BEAM.

or

DANGER - Invisible laser radiation when open. AVOID DIRECT EXPOSURE TO BEAM.

PHILIPS

FWM779

FC Tested To Comply With FCC Standards

FOR HOME OR OFFICE USE

Philips Consumer Electronics North America
P.O.Box 14810 Knoxville, TN 37914-1810
Phone no.: 1-800-531-0039

Energy Star

As an ENERGY STAR

Partner, Philips has determined

that this product meets the

ENERGY STAR guidelines for energy efficiency.



Modifications not authorized by the manufacturer may void users authority to operate this device.

CAUTION

Use of controls or adjustments or performance of procedures other than herein may result in hazardous radiation exposure or other unsafe operation.

ATENCIÓN

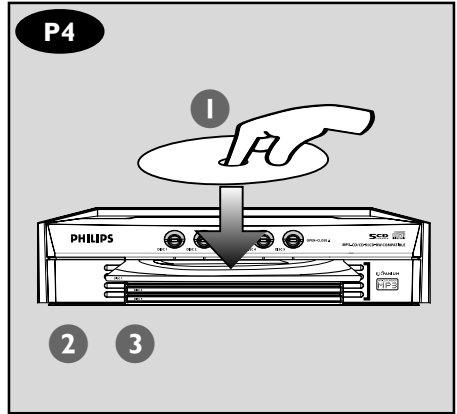
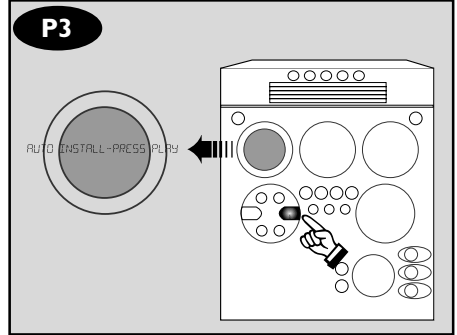
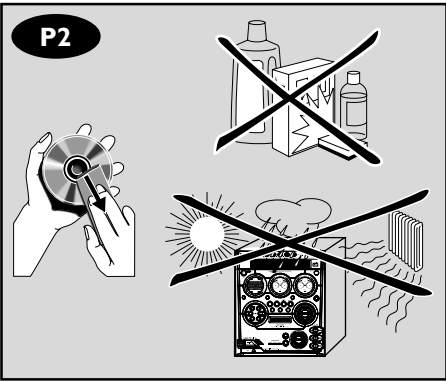
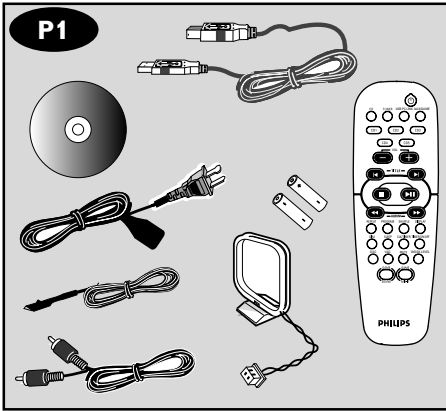
El uso de mando o ajustes o la ejecución de métodos que no sean los aquí descritos puede ocasionar peligro de exposición a radiación.

This system complies with the FCC rules, Part 15 and with 21 CFR 1040.10. Operation is subject to the following two conditions:

- This device may not cause harmful interference, and
- This device must accept any interference received, including interference that may cause undesired operation.

Notes :

- This equipment has been tested and found to comply with the limits for a Class B digital device, pursuant to part 15 of the FCC Rules. These limits are designed to provide reasonable protection against harmful interference in a residential installation. This equipment generates, uses, and can radiate radio frequency energy and, if not installed and used in accordance with the instruction manual, may cause harmful interference to radio communications. However, there is no guarantee that interference will not occur in a particular installation. If this equipment does cause harmful interference to radio or television reception, which can be determined by turning the equipment off and on, the user is encouraged to try to correct the interference by one or more of the following measures :
- Relocate the receiving antenna.
- Increase the separation between the equipment and receiver.
- Connect the equipment into an outlet on a circuit different from that to which the receiver is connected.
- Consult the dealer or an experienced radio/TV technician for help.



Return your **Warranty Registration** card today to ensure you receive all the benefits you're entitled to.

- Once your Philips purchase is registered, you're eligible to receive all the privileges of owning a Philips product.
- So complete and return the Warranty Registration Card enclosed with your purchase at once, and take advantage of these important benefits.

Warranty Verification

Registering your product within 10 days confirms your right to maximum protection under the terms and conditions of your Philips warranty.

Owner Confirmation


Your completed Warranty Registration Card serves as verification of ownership in the event of product theft or loss.


Model Registration

Returning your Warranty Registration Card right away guarantees you'll receive all the information and special offers which you qualify for as the owner of your model.

Know these *safety* symbols



 This “bolt of lightning” indicates uninsulated material within your unit may cause an electrical shock. For the safety of everyone in your household, please do not remove product covering.

 The “exclamation point” calls attention to features for which you should read the enclosed literature closely to prevent operating and maintenance problems.

For Customer Use

Enter below the Serial No. which is located on the rear of the cabinet. Retain this information for future reference.

Model No. _____

Serial No. _____

WARNING: TO REDUCE FIRE OR SHOCK HAZARD, DO NOT EXPOSE THIS EQUIPMENT TO RAIN OR MOISTURE.

CAUTION: To prevent electric shock, match wide blade of plug to wide slot, and fully insert.



PHILIPS



Congratulations on your purchase, and welcome to the “family!”

Dear Philips product owner:

Thank you for your confidence in Philips. You've selected one of the best-built, best-backed products available today. And we'll do everything in our power to keep you happy with your purchase for many years to come.

As a member of the Philips “family,” you're entitled to protection by one of the most comprehensive warranties and outstanding service networks in the industry.

What's more, your purchase guarantees you'll receive all the information and special offers for which you qualify, plus easy access to accessories from our convenient home shopping network.

And most importantly you can count on our uncompromising commitment to your total satisfaction.

All of this is our way of saying welcome – and thanks for investing in a Philips product.

Sincerely,

Lawrence J. Blanford
President and Chief Executive Officer

P.S. Remember, to get the most from your Philips product, you must return your Warranty Registration Card within 10 days. So please mail it to us right now!

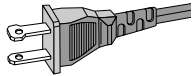
IMPORTANT SAFETY INSTRUCTIONS

1. **Read these instructions.**
2. **Keep these instructions.**
3. **Heed all warnings.**
4. **Follow all instructions.**
5. **Do not use this apparatus near water.**
6. **Clean only with a piece of dry cloth.**
7. **Do not block any ventilation openings. Install in accordance with the manufacturer's instructions.**
8. **Do not install near any heat sources**

such as radiators, heat registers, stoves, or other apparatus (including amplifiers) that produce heat.

9. **Do not defeat the safety**


purpose of the polarized or



AC Polarized Plug

grounding-type plug. A polarized plug has two blades with one wider than the other. A grounding type plug has two blades and a third grounding prong. The wide blade or the third prong are provided for your safety. If the provided plug does not fit into your outlet, consult an electrician for replacement of the obsolete outlet.

10. **Protect the power cord** from being walked on or pinched, particularly at plugs, convenience receptacles, and the point where they exit from the apparatus.
11. **Only use attachments/accessories** specified by the manufacturer.

12.  **Use only with the cart**, stand, tripod, bracket, or table specified by the manufacturer or sold with the apparatus. When a cart is

used, use caution when moving the cart /apparatus combination to avoid injury from tip-over:

13. **Unplug this apparatus** during lightning storms or when unused for long periods of time.
14. **Refer all servicing** to qualified service personnel. Servicing is required when the apparatus has been damaged in any way, such as power-supply cord or plug is damaged, liquid has been spilled or objects have fallen into the apparatus, the apparatus has been exposed to rain or moisture, does not operate normally, or has been dropped.

15. **Battery usage CAUTION** –To prevent battery leakage which may result in bodily injury, property damage, or damage to the unit:

Install **all** batteries correctly, + and - as marked on the unit.

Do not mix batteries (**old** and **new** or **carbon** and **alkaline**, etc.).

Remove batteries when the unit is not used for a long time.

16. **Apparatus shall not be exposed to dripping or splashing.**
17. **Do not place any sources of danger on the apparatus** (e.g. liquid filled objects, lighted candles).

18. This product may contain lead and mercury. Disposal of these materials may be regulated due to environment considerations.

For disposal or recycling information, please contact your local authorities or the Electronic Industries Alliance: www.eiae.org.

EL 6475-S004: 03/12

Class II equipment symbol



This symbol indicates that the unit has a double insulation system

English 8

Français 34

Español 61

English

Français

Español

General Information

Supplied accessories	9
Environmental information	9
Care and safety information	9

Functional Overview

Main unit and remote control	10–11
Control buttons available on the remote control only	11

Connections

Step 1: Connecting FM/AM antennas	13
Step 2: Connecting the speakers	13
Step 3: Connecting to PC	13
Step 4: Connecting to game console	13
Step 5: Connecting the AC power cord	14
Step 6: Inserting batteries into the remote control	14
Using the remote control to operate the system	14

Gameport Operations

About Gameport	15
Preparation before use	15
Starting operation	15

USB PC Link

Quick setup guide	16
PC system requirement	16
Software installation	16
Using MusicMatch software	17
Connecting USB PC link	17
Philips Sound Agent 2	18
Enabling digital CD audio output	18

Basic Operations

Switching on/off	19
Switching to active mode	19
Switching to Eco Power standby mode	19
Switching to standby mode (view clock)	19
Demonstration mode	19
Setting the clock	19
Dimming system's display screen	20
Volume control	20
Sound control	20
wOOx sound	20
Incredible Surround	20
Digital sound control	20
Virtual ambience control	20

Disc Operations

Playable discs	21
Loading discs	21
Basic playback controls	21
Playing an MP3 disc	22
Repeat and shuffle	22
Repeat play	22
Random play	22
Programming the disc tracks	23
Checking the programme	23
Clearing the programme	23

Tuner Operations

Tuning to radio stations	24
Presetting radio stations	24
Using the plug and play	24
Automatic presetting	24
Manual presetting	24
Selecting a preset radio station	24
Deleting a preset radio station	24

Timer Operations

Setting the timer	25
Activating/Deactivating the timer	25
Setting the sleep timer	26

Other Connection

Listening to an external source	26
Recording to an external device	26

Specifications

Troubleshooting

Refer to the type plate on the rear of the system for identification and supply ratings.

Supplied accessories (page 3 – P1)

- USB PC Link installer disc
- USB cable
- Remote control and two AA batteries.
- AM loop antenna
- FM wire antenna
- Video cinch cable (yellow)
- AC power cord

Environmental information

All unnecessary packaging has been omitted. We have tried to make the packaging easy to separate into three materials: cardboard (box), polystyrene foam (buffer) and polyethylene (bags, protective foam sheet).

Your system consists of materials which can be recycled and reused if disassembled by a specialised company. Please observe the local regulations regarding the disposal of packaging materials, exhausted batteries and old equipment.

Care and safety information

(page 3 – P2)

Avoid high temperature, moisture, water and dust

- Do not expose the system, batteries or discs to humidity, rain, sand or excessive heat (caused by heating equipment or direct sunlight). Always keep the disc tray closed to avoid dust on the lens.
- No objects filled with liquid, such as vases, shall be placed on the apparatus.
- No naked flame sources, such as lighted candles, shall be placed on the apparatus.

Avoid condensation problem

- The lens may cloud over when the system is suddenly moved from cold to warm surroundings, making it impossible to play a disc. Leave the system in the warm environment until the moisture evaporates.

Do not block the vents

- In a cabinet, allow about 10cm (4 inches) of free space all around the system for adequate ventilation.

Care of disc

- To clean a CD, wipe it in a straight line from the centre towards the edge using a soft, lint-free cloth. A cleaning agent may damage the disc!
- Write only on the printed side of a CDR(W) and only with a soft felt-tipped pen.
- Handle the disc by its edge, do not touch the surface.

Care of the cabinet

- Use soft cloth slightly moistened with a mild detergent solution. Do not use a solution containing alcohol, spirits, ammonia or abrasives.

Finding a suitable location

- Place the system on a flat, hard, and stable surface.

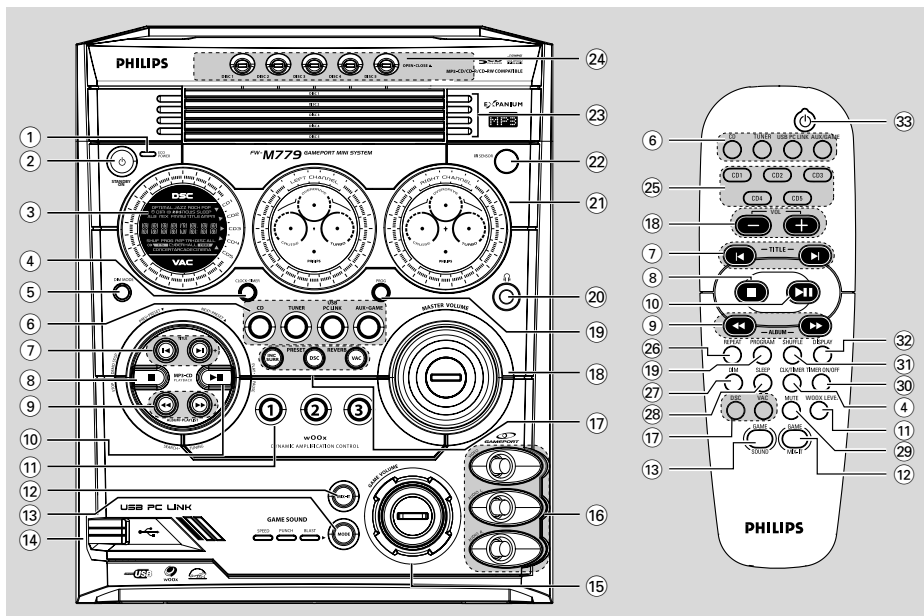
Built-in safety circuit

- Under extreme conditions, this system may switch to standby mode automatically. If this happens, let the system cool down before reusing it (not for all versions).

Power saving

- This system is designed to use less than 1W of electricity when switched to Eco Power standby. Disconnect the AC power cord from the power outlet when not in use.

Functional Overview



Main unit and remote control

① ECO POWER indicator

- Lights up when the system is in the Eco Power standby mode.

② STANDBY ON $\text{\textcircled{P}}$

- Switches to the Eco Power standby mode or turns on the system.
- *Switches to the standby mode.

③ Display screen

④ CLOCK•TIMER (CLK/TIMER)

- *Enters clock or timer setting mode.

⑥ CD / TUNER / USB PC LINK / AUX•GAME

- Selects the relevant active mode.
- CD: toggles between DISC 1~5.
- TUNER: toggles between FM and AM band.
- AUX•GAME: toggles between AUX and GAMEPORT mode.

⑦ PREV•PRESET \blacktriangledown (TITLE -) (◀) NEXT•PRESET \blacktriangle (TITLE +) (▶)

- CD: selects a track or selects a title from MP3 disc.
- TUNER: selects a preset radio station.
- CLOCK: sets the minutes.
- USB PC LINK: selects your desired playlist.

⑧ STOP•DEMO STOP ■

- Exits an operation.
- CD: stops playback or clears a programme.
- TUNER: *erases a preset radio station.
- USB PC LINK: stops playback.
- (only on the main unit)*
- *Turns on/off the demonstration mode.

⑨ SEARCH•TUNING (ALBUM/PLAYLIST) (◀▶▶)

- CD: *searches backward/forward or selects an album from MP3 disc.
- TUNER: tunes the radio frequency up/down.
- CLOCK: sets the hours.
- USB PC LINK: selects your desired playlist.

* = Press and hold the button for more than two seconds.

10 PLAY•PAUSE ► II

- **CD:** starts/pauses playback.
- **USB PC LINK:** starts/pauses playback.

(only on the main unit)

TUNER: *enters Plug & Play mode and/or starts preset radio station installation.

11 wOOx 1/2/3 (wOOx LEVEL)

- Selects different type of enhanced wOOx sound settings (wOOx 1, wOOx 2 or wOOx 3).

12 MIX IT (GAME MIX IT)

- Mixes the game sound with your favourite music from one of these music source (CD, TUNER, USB PC LINK or AUX).

13 MODE (GAME SOUND)

- Selects different type of equaliser setting for Gameport (SPEED, PUNCH or BLAST).

- 14 Connect the USB cable between the system and PC's USB port.

15 GAME VOLUME

- Adjusts the game's output volume level.

16 VIDEO

- Use a video cable to connect to your game console's video output.

AUDIO L. / AUDIO R.

- Use a audio cable to connect to your game console's left/right audio output.

17 INC SURR

- Turns on/off the Incredible Surround effect.

DSC / PRESET

- Selects different type of preset sound equaliser settings (OPTIMAL, JAZZ, ROCK or POP).

VAC / REVERB

- Selects different type of environment ambience-based equaliser settings (HALL, CINEMA, CONCERT, CYBER or ARCADE).

*PRESET and REVERB environment sound modes are only available when the optional software, Philips Sound Agent 2 is activated during USB PC Link applicaion.

18 MASTER VOLUME (VOL + –)

- Adjusts the volume level.

19 PROG (PROGRAM)

- **CD:** starts or confirms track programming.
- **TUNER:** starts *automatic/manual preset programming.
- **CLOCK:** selects 12- or 24-hour clock display.

20

- Plug in the headphones jack. The speakers output will be cancelled.

21 VU meters

- Indicates signal strength of left/right channel.

22 iR SENSOR

- Point the remote control towards this sensor.

23 Disc trays (1~5)

24 OPEN•CLOSE ▲ (DISC 1~5)

- Opens/closes the individual disc tray.

Control buttons available on the remote control only

25 CD 1~5

- Selects a disc tray to playback.

26 REPEAT

- Repeats a track/disc/all programmed tracks.

27 DIM

- Turns on/off the dim mode.

28 SLEEP

- Sets the sleep timer function.

29 MUTE

- Mutes or restores the volume.

30 TIMER ON/OFF

- Turns on/off the timer function.

31 SHUFFLE

- Turns on/off the random play mode.

32 DISPLAY

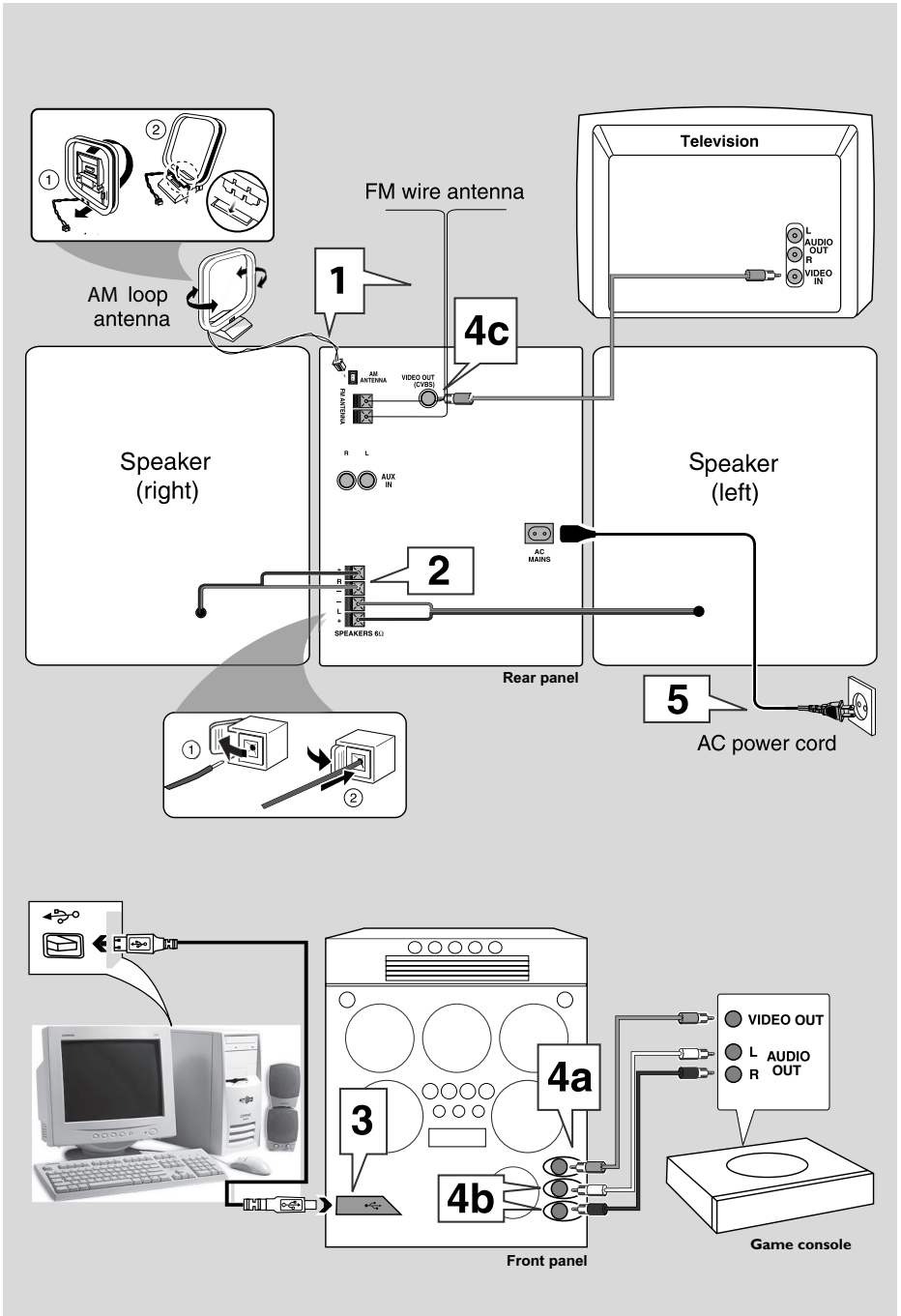
- Displays the album and title name for MP3 disc.

33

- Switches to the Eco Power standby mode.
- *Switches to the standby mode.

Connections

English



Warning!

- Use only the supplied speakers.

The combination of the main unit and speakers provide the best sound.

Using other speakers can damage the unit and sound quality will be negatively affected.

- Never make or change connections with the power switched on.
- Connect the AC power cord to the power outlet only after you have finished hooking up everything.

Step 1: Connecting FM/AM antennas

- Place the AM loop antenna on a shelf or attach it to a stand or wall.
- Extend the FM antenna and fix its ends to the wall.
- Adjust the position of the antennas for optimal reception.
- Position the antennas as far as possible from a TV, VCR or other radiation source to prevent unwanted noise.
- For better FM stereo reception, connect external FM antenna.

Step 2: Connecting the speakers

Connect the speaker wires to the SPEAKERS terminals, right speaker to “R” and left speaker to “L”, coloured (marked) wire to “+” and black (unmarked) wire to “-”. Fully insert the stripped portion of the speaker wire into the terminal as shown.

Notes:

- Ensure that the speaker cables are correctly connected. Improper connections may damage the system due to short-circuit.
- Do not connect more than one speaker to any one pair of + / - speaker terminals.

Step 3: Connecting to PC

Use the supplied USB cable to connect the system to your personal computer's USB port. After installing the USB PC LINK application software onto your PC, you can play your music collection via the system (refer to “USB PC Link”).

Step 4: Connecting to game console

IMPORTANT!

Gameport inputs are solely for game console only.

- Use the game console's video cable (not supplied) to connect its video output to the GAMEPORT-VIDEO terminal.
- Use the game console's audio cables (not supplied) to connect its audio outputs to the GAMEPORT-AUDIO L. / AUDIO R. terminals.
- Use the video cable (yellow) to connect the VIDEO OUT terminal to the video input on the TV for viewing.

Notes:

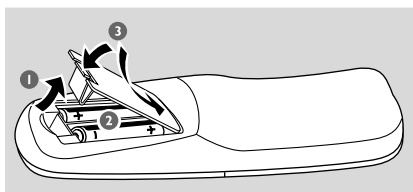
- On the TV, the Video Input jack is usually yellow and might be labeled A/V In, CVBS, Composite or Baseband.
- To avoid magnetic interference, do not position the front speakers too close to your TV.
- For optimal enjoyment of your Gaming Experience, please do not connect the TV's AUDIO OUT to the audio system's AUX IN (R/L) terminals.
- If you want to listen to your favorite movies/TV programs through the Philips Mini System, please disconnect the Game Console connection on the front of the set to avoid any unwanted noise.

Connections

Step 5: Connecting the AC power cord

"AUTO INSTALL - PRESS PLAY" may appear on the display panel when the AC power cord is plugged into the power outlet for the first time. Press **▶||** on the main unit to store all available radio stations (page 3 – P3) or press **■** to exit (refer to "Tuner Operations").

Step 6: Inserting batteries into the remote control



- 1 Open the battery compartment cover.
- 2 Insert two batteries type R06 or AA, following the indications (+ -) inside the compartment.
- 3 Close the cover.

Using the remote control to operate the system

- 1 Aim the remote control directly at the remote sensor (IR) on the main unit.
- 2 Select the source you wish to control by pressing one of the source select keys on the remote control (for example CD,TUNER).
- 3 Then select the desired function (for example **▶||**, **◀**, **▶**).

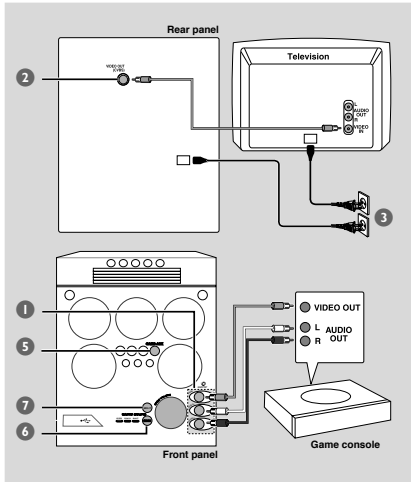
CAUTION!

- Remove batteries if they are exhausted or will not be used for a long time.
- Do not use old and new or different types of batteries in combination.
- Batteries contain chemical substances, so they should be disposed of properly.

About Gameport

Gameport allows you to connect your game console to this mini system which enables you to enjoy a total game immersion experience through powerful sound output.

Preparation before use



- 1 Connect your game console's video and audio output to the GAMEPORT video and audio inputs respectively (refer to "Connections – Connecting to game console").
- 2 Connect your TV's video input to the **VIDEO OUT (CVBS)** on the rear panel.
- 3 Connect all the AC power cords to the power outlet.

Starting operation

- 4 Turn on the TV and set to the correct video-in channel.
The TV's video input channel may be called AUX(iliary) IN, AUDIO/VIDEO (AV) IN, EXT 1, etc. These channels are often near channel 00 on your TV. Or, your TV remote control may have a button or switch that chooses different video modes. See your TV manual for details.

- 5 Press **AUX•GAME** until "GAMEPORT" is displayed.
- 6 Press **MODE** (or **GAME SOUND** on the remote control) to select the type of sound setting that best suits the game : **SPEED, PUNCH, BLAST** or **OFF**.
- 7 If you like to mix your game sound with your favourite music, press **MIX-IT** to select the desired music source : **CD, TUNER, USB PC LINK, AUX** or **OFF**.
CD → "MIX-CD"
TUNER → "MIX-TU"
USB PC LINK → "MIX-USB"
AUX → "MIX-AUX"
OFF → "MIX-OFF"
- 8 If necessary, start to play your chosen mixer source.
- 9 Play your favourite game.

To adjust the game console's volume level

- Adjust **GAME VOLUME**.

To change the mixer source

- Press **MIX-IT**.

To control the current active mixer source

- Press the respective source button (for example, CD, TUNER) on the remote control, then select the desired function (for example ▶, ◀, ▶▶). For example, if CD is the mixer source and you want to change the disc tray, you have to press **CD**, then press **CD 1-5** to select the desired disc tray.

Notes:

- You can only activate **GAME VOLUME** and **MIX-IT** while in the game source mode.
- If your game console is switched on, the video image will always appear on the TV even though you are not in the gameport mode.

IMPORTANT!

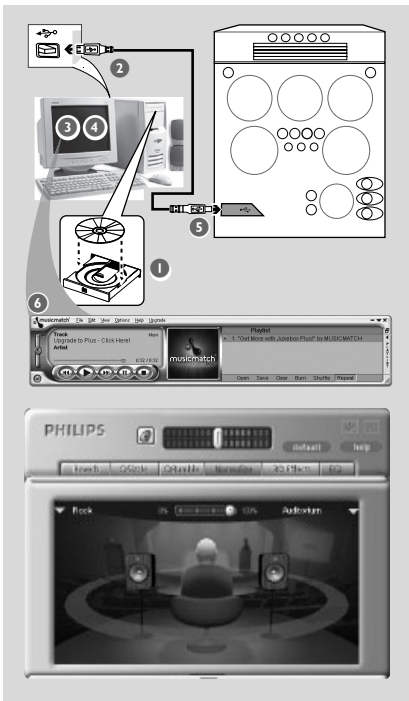
– Make sure the mute setting on your PC control panel is deactivated to ensure you get the sound from your audio system!

Quick setup guide

PC system requirement

- Windows 98SE/ME/2000/XP
- Intel Pentium MMX200 or higher
- CD-ROM drive
- USB port
- Free hard disk space: 80 MB for the software

Software installation



- 1 Turn on your PC and insert the installer disc into your PC's CD-ROM drive.
- 2 The installation guide will appear automatically. If it does not, go to the CD-ROM drive in Windows Explorer and double click the **Setup.exe**.
- 3 Select your desired language from the list.
- 4 Select **install Software**.
- 5 Connect the USB cable to the PC and Audio System and press the USB PC Link button on the Audio set or the remote control.
- 6 Follow the instructions as prompted on the screen to correctly install the USB PC Link Driver; **Philips Sound Agent 2** and **MusicMatch** Jukebox software.

Notes:

- Minimum OS requirement for Philips Sound Agent 2: Windows 2000 or XP.
- During installation, your previous MusicMatch Jukebox software on your PC will be replaced.

Declarations

Windows and **Pentium** are trademarks of Microsoft Corporation and Intel Corporation. All other trademarks belong to their respective owners.

USB PC Link sample track, music by Chemistry (www.chemistryteam.com)

Using MusicMatch software

To create a music library



Add music files to **My Music Library**

Add files to **My Library** by dragging and dropping audio tracks from anywhere in Windows, into the **My Library** window.

You can also click **Add Files** in the **Music Center** to add tracks.

- 1 Click the **Add Files** button on the **Music Library** window.
- 2 Browse your computer to the folder where audio files are stored. Check the box **Also Add Tracks** from Subfolders to add all tracks in the current folder, and all subfolders.
- 3 Click the **Select All** button to select all the files in the current, and all subfolders.
- 4 Click **Add**.
Files will be added to **My Library**.

To create a "Playlist"



- 1 Drag and drop files, or folders with music files, from anywhere on your computer or **My Library** into the **Playlist** window. Your files will begin to play. Or, you may click the **Open** button on the **Playlist** window to browse for and add music to the **Playlist**.
- 2 Click the **Save** button on the **Playlist**, or go to the menu **Options>Playlist>Save Playlist**.

- 3 You will be prompted to name the **Playlist**. In the Name field type the name you'd like to give this **Playlist**.
- 4 Click the **Save** button. Now you can play all the saved playlists with the audio system by pressing ◀ or ▶ buttons. Details operation, please refer to Connecting to **USB PC Link**.

Note:

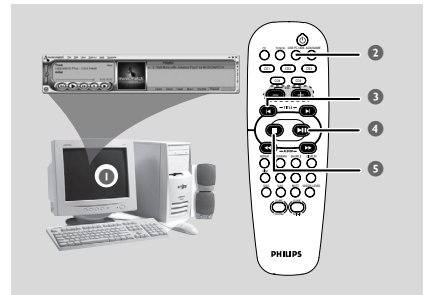
– It is not possible to create a playlist from the system's 5 CD changer. If you encounter any problem using **USB PC Link**, please refer to the **FAQ** (Frequently Asked Questions) stored in your **USB PC Link** installer disc or visit "www.audio.philips.com" for the latest update on **FAQ**.

Connecting to USB PC Link

USB PC Link allows you to playback your music collection from the PC via the powerful amplifier and speakers of this system.

IMPORTANT!

Make sure the MUSICMATCH software has been installed. Refer to the CD-ROM sleeve for USB PC Link installation.



- 1 Turn on your computer and launch the **"MUSICMATCH JUKEBOX"**.
→ The volume level of PC should not be put into mute.
- 2 Press **USB PC LINK**.
→ If the audio streaming is detected, **"CONNECTING"** is displayed and the USB indicator will be flashing.
→ If **"NO CONNECTION"** is displayed, check the connection between your PC and micro system.

Notes:

- When the USB PC Link feature is activated, Philips Sound Agent 2 will automatically be launched (if it has been successfully installed under OS Windows 2000/XP).
 - The default setting for PRESET/REVERB is MP3/Study Room respectively. You may select from the list of different sound modes to suit your music and environment preference. Alternatively, you may select PRESET (Neutral mode) and REVERB (No Environment mode) for the minimum sound effect.
- 3 Press ◀◀ or ▶▶ to select your favorite playlist, and then press ◀ or ▶ until the desired track in the playlist is highlighted.
 - 4 Press ▶ || to start playback.
→ The track information will appear on the display. The display only supports English characters.
- During playback,
- Press **SHUFFLE** to play all available tracks in the playlist in random order.
 - Press **REPEAT** to repeat playback of all the tracks in the playlist.
- 5 To exit, select another active mode or press ■.

Philips Sound Agent 2

Philips Sound Agent 2 is a BONUS software provided with Philips Audio system to enhance the quality of MP3 Music playback via USB PC Link.

- 1 **Philips Sound Agent 2** will be automatically launched if USB PC Link is selected.
- 2 Press **DSC/PRESET** or **VAC/REVERB** to select different Preset or Reverb sound effect.
- 3 For more details about using **Philips Sound Agent 2** features on your PC, please refer to the User Manual in the supplied CD-ROM or the Help menu.

Notes:

- Philips Sound Agent 2 minimum OS requirement: Windows 2000 or XP.
- Please refer to the CD-ROM sleeve for detailed installation procedures, OR 'Software installation' in this manual.

Enabling digital CD audio output

Before playing the CD through your PC's CD-ROM drive, it is necessary to configure your PC's hardware as follows:

For Windows ME/2000/XP

- 1 Enter the system control panel menu and select:
"System → Hardware → Device Manager → CD-ROM drives → Action-Properties → Properties".

OR

For Windows 98SE

Enter the system control panel menu and select "MULTIMEDIA" and "CD MUSIC".

- 2 Check the 'Enable digital CD audio for this CD-ROM device' setting option is selected (enabled).

Notes:

- You may need to refer to your PC's manual for correct configuration.
- For the optimal playback effect of the CD/MP3-CD, please use your Philips audio system.

Switching on/off

Switching to active mode

- Press **CD, TUNER, USB PC LINK** or **AUX•GAME**.

Switching to Eco Power standby mode

- Press **⏻**.
 - ECO POWER button lights up.
 - The display screen will go blank.

Switching to standby mode (view clock)

- Press and hold **⏻**.
 - The clock is displayed.
 - While in the standby mode, pressing **CLOCK•TIMER** button will switch the system to the Eco Power standby mode.

Note:

- Before switching the system to the Eco Power standby or standby mode, make sure the demonstration mode has been deactivated.

Demonstration mode

If the demonstration mode is active, whenever you switch the system to the Eco Power standby or standby mode, it will show the various features offered by the system.

To activate the demonstration

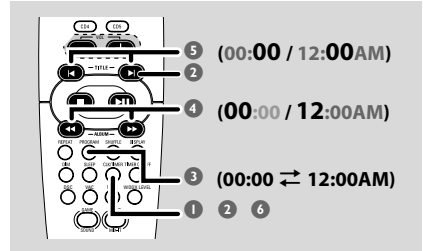
- In the Eco Power standby/standby mode, press and hold **■** on the main unit until "**DEMO ON**" is displayed.

To deactivate the demonstration

- Press and hold **■** on the main unit until "**DEMO OFF**" is displayed.

Setting the clock

The clock can be set in either 12-hour or 24-hour mode ("11:59 PM" or "23:59" for example).



- 1 Press and hold **CLK/TIMER** (or **CLOCK•TIMER** on main unit) until "SELECT CLOCK OR TIMER" is displayed.
- 2 Press **▶** to change the display to "CLOCK" and press **CLK/TIMER (CLOCK•TIMER)** again to confirm.
- 3 Press **PROGRAM (PROG)** repeatedly to change between the 12-hour and 24-hour clock mode.
- 4 Press **◀** or **▶** repeatedly to set the hour.
- 5 Press **◀** or **▶** repeatedly to set the minute.
- 6 Press **CLK/TIMER (CLOCK•TIMER)** to store the setting.
 - The clock will start working.

To view the clock time in any active mode

- Press **CLK/TIMER (CLOCK•TIMER)** once.
 - The clock is displayed for a few seconds.

Notes:

- The clock setting will be erased when the system is disconnected from the power supply.
- The system will exit the clock setting mode if no button is pressed within 90 seconds.

Basic Operations

Dimming system's display screen

You can select the desired brightness for the display panel.

- In any active mode, press **DIM** on the remote control repeatedly to turn on/off dim mode.
→ **DIM** is shown, except for the DIM OFF mode.

Volume control

- Adjust **MASTER VOLUME** (or press **VOL + / -** on the remote control) to increase or decrease the sound level.
→ "VOL MIN" is the minimum volume level and "VOL MAX" is the maximum volume level.

To switch off the volume temporarily

- Press **MUTE** on the remote control.
→ Playback will continue without sound and "MUTE" is displayed.
→ To restore the volume, press MUTE again or increase the volume level.

Sound control

DSC and VAC features cannot be activated at the same time.

While in the game mode, all the sound control features are not available except wOOx and Game Sound control.

wOOx sound

The wOOx sound is designed to produce and handle high dynamic sound signals at very low frequencies.

- Press **wOOx 1/2/3** respectively (or press **wOOx LEVEL** repeatedly on remote control) to select : **wOOx 1**, **wOOx 2**, **wOOx 3** or **wOOx OFF**.
→ Some discs might be recorded in high modulation, which causes a distortion at high volume. If this occurs, deactivate wOOx or reduce the volume.

Incredible Surround

Incredible Surround magnifies the virtual distance between the front speakers for an incredibly wide, enveloping, stereo effect.

- Press **INC SURR** to turn on/off the incredible surround sound effect.
→ If activated, **IS** will appear on the display.

Digital Sound Control

DSC provides a different type of preset sound equaliser setting.

- Press **DSC** repeatedly to select: **OPTIMAL**, **JAZZ**, **ROCK** or **POP**.

Virtual Ambience Control

VAC provides a different type of environment-based equaliser setting.

- Press **VAC** repeatedly to select : **HALL**, **CINEMA**, **CONCERT**, **CYBER** or **ARCADE**.

Note:

– When you select VAC, Incredible Surround will switch on automatically.

Automatic DSC-wOOx and VAC-wOOx selection

The best wOOx setting is generated automatically for each DSC, VAC, Game Sound selection. You can manually select the wOOx setting that best suits your listening environment.

IMPORTANT!

- This system is designed for regular discs. Therefore, do not use any accessories such as disc stabiliser rings or disc treatment sheets, etc., as offered on the market, because they may jam the changer mechanism.
- Do not load more than one disc onto each tray.

Playable discs

This system is able to play:

- All pre-recorded audio CDs
- All finalised audio CDR and audio CDRW discs
- MP3-CDs (CD-ROMs with MP3 tracks)



Loading discs (page 3 – P4)

- 1 Press **OPEN•CLOSE ▲ DISC 1** button on top of the main unit to open disc tray 1.
- 2 Load a disc with the label side facing up.
- 3 Press **OPEN•CLOSE ▲ DISC 1** button again to close the disc tray.
→ "READING" is displayed. The selected disc tray, total number of tracks and the playing time will appear on the display.
- 4 Repeat **steps 1~3** to load discs onto the **disc trays 2~5**.

Notes:

- To ensure good system performance, wait until the disc trays completely read the disc(s) before proceeding.
 - Only one tray can be opened each time.
- If you open the second tray before closing the first tray, the first tray will automatically close before the second tray opens.

Basic playback controls

Load discs (page 3 – P4)

To play all discs on the disc trays

- Press **▶II**
OR

In the stop mode, press **CD** to select a disc tray to begin, then press **▶II**
→ All the available discs will play once, and then stop.

To play the selected disc only

- Press one of the **CD 1~5** buttons on remote.
→ The selected disc will play once, and then stop.

To select a desired track

- Press **◀** or **▶** repeatedly until the desired track is displayed.
→ During random play (shuffle mode), pressing **◀** will not affect the current playback.

To search for a particular passage during playback

- Press and hold **◀◀** or **▶▶** and release it when the desired passage is located.
→ During searching, the volume will be reduced. For MP3 disc, the volume will be muted.

To replace discs without interrupting playback

- Press **OPEN•CLOSE ▲** buttons of the inactive disc trays (refer to "Loading discs"). For example, if currently disc tray 1 is playing, you can replace the discs on disc tray 2~5.

To interrupt playback

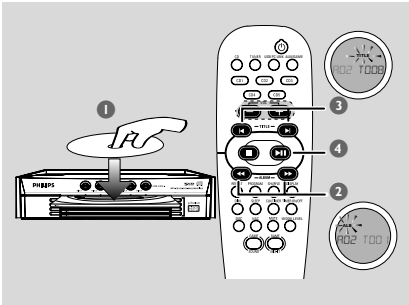
- Press **▶II**
→ To resume normal playback, repeat the above.

To stop playback

- Press **■**.
→ If the system remains in the stop mode for 30 minutes, it will switch to the Eco Power standby mode.

Disc Operations

Playing an MP3 disc



- 1 Load an MP3 disc.
→ The disc reading time may exceed 10 seconds due to the large number of songs compiled in one disc.
→ "Axx x Txxxx" is displayed. xx is the current album number and xxxx is the current title number.
 - 2 Press ◀ / ▶ (ALBUM ▼▲) to select a desired album.
 - 3 Press ◀ / ▶ (TITLE - +) to select a desired title.
 - 4 Press ▶▶ to start playback.
- During playback, press **DISPLAY** to show the album and title name.

Supported MP3 disc formats:

- ISO9660, Joliet, UDF 1.5
- Maximum title number : 999 (depending on filename length)
- Maximum album number : 99
- Supported sampling frequencies : 32 kHz, 44.1 kHz, 48 kHz
- Supported Bit-rates : 32~256 (kbps), variable bitrates
- ID3 tags : V1.1, V2.2, V2.3, V2.4

Repeat and shuffle

You can select and change various play modes before or during playback.

Repeat play

- 1 Press **REPEAT** on the remote control repeatedly to select :

A	REP TRH	D	PROG REP TRH
B	REP DISC	E	PROG REP ALL
C	REP DISC ALL		

- A - to repeat playback of the current track.
 - B - to repeat playback of the current disc.
 - C - to repeat playback of all available discs (not available for this model).
 - D - to repeat playback of the current programmed track (only if the programme mode is active)
 - E - to repeat playback of all the programmed tracks (only if the programme mode is active)
- 2 To resume normal playback, press **REPEAT** until "OFF" is displayed.

Random play

- Press **SHUFFLE** on the remote control to turn on/off the shuffling mode.
→ If activated, **SHUF** is shown and the repeat mode (if any) will be cancelled.
→ The random play will start from the current disc tray. And it will change to the next available disc tray only after all the tracks in the active one have been shuffled.
→ If the programming mode is active, only the programmed tracks will be played in a random order.

Note:

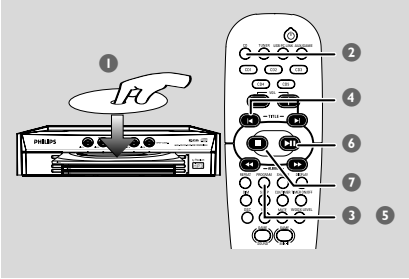
- Pressing the **OPEN • CLOSE** button will cancel all repeat and shuffling modes.

Programming the disc tracks

Programming tracks is possible when playback is stopped. Up to 99 tracks can be stored in the memory in any order.

IMPORTANT!

It is only possible to program from the current selected disc tray.



- 1 Load the desired discs on the disc trays (refer to "Loading discs").
- 2 Press **CD** or one of the **CD 1-5** buttons to select a disc.
- 3 Press **PROGRAM (PROG)** to start programming.
→ **PROG** starts flashing.
- 4 Press **◀** or **▶** repeatedly to select the desired track.
- For MP3 disc, press **◀▶** (**ALBUM ▼▲**) and **◀ / ▶** (**TITLE - +**) to select the desired album and title for programming.
- 5 Press **PROGRAM (PROG)** to store.
- Repeat **steps 4-5** to select other tracks.
→ If you attempt to program more than 99 tracks, "PROGRAM FULL" is displayed.
- 6 To start program play, press **▶||**
- 7 To stop playback or to end programming, press **■** once.
→ **PROG** stays and the programming mode remains active.

Notes:

- If the total playing time has reached 100 minutes or one of the programmed tracks has a number greater than 30, "—:—" is displayed instead of the total playing time.
- The system will exit the programming mode if no button is pressed within 20 seconds.

Checking the programme

- 1 Stop playback and press **◀** or **▶** repeatedly.
- 2 Press **■** to exit.
OR
Press **▶||** to start playback from the current programmed track

Clearing the programme

- Stop playback, and then press **■** to clear the programme.
OR

Press the **OPEN • CLOSE ▲** button of the disc tray.

→ **PROG** disappears and "PROGRAM CLEARED" is displayed.

Note:


- The program will be erased if the system is disconnected from the power supply or you switch to another source mode.

Tuner Operations

IMPORTANT!

Make sure the FM and AM antennas are connected.

Tuning to radio stations

- 1 Press **TUNER** to enter tuner mode.
To select another waveband (FM or AM), press **TUNER** again.
- 2 Press and hold **◀◀** or **▶▶** until the frequency indication starts to change, then release.
→ The system automatically tunes to the next strong signal radio reception.
→  lights up for FM stereo reception.

Tuning to a weak signal station,

- Press **◀◀** or **▶▶** briefly and repeatedly until an optimal reception is found.

Presetting radio stations

You can store up to 40 preset radio stations in the memory, starting from FM and followed by AM bands.

Notes:

- The system will exit presetting mode if no button is pressed within 20 seconds.
- If no stereo frequency is detected during Plug and Play, "CHECK ANTENNA" is displayed.

Using the plug and play (page 3 - P3)

Plug and Play allows you to store all available radio stations automatically.

- 1 Connect the system to the power supply, "AUTO INSTALL - PRESS PLAY" is displayed.
OR
In the Eco Power standby/standby mode, press and hold **▶||** on the main unit until "AUTO INSTALL - PRESS PLAY" is displayed.
- 2 Press **▶||** on the main unit to start installation.
→ "INSTALL TUNER" is displayed.
→ All previously stored radio stations will be replaced.
→ Once completed, the last tuned radio station will be played.

Automatic presetting

You can start the automatic presetting from a selected preset number:

- 1 In the tuner mode, press **◀** or **▶** to select a preset number.
- 2 Press and hold **PROGRAM (PROG)** until "AUTO" is displayed.
→ If a radio station has been stored in one of the presets, it will not be stored again at another preset number.
→ If no preset number is selected, automatic preset will begin from preset (1) and all your previous presets will be overridden.

Manual presetting

You can choose to store only the favourite radio stations.

- 1 Tune to your desired radio station (refer to "Tuning to radio stations").
 - 2 Press **PROGRAM (PROG)**.
→ The preset number starts flashing. If you want to store the radio station in another preset number, press **◀** or **▶**.
 - 3 Press **PROGRAM (PROG)** again to store.
- Repeat **steps 1–3** to store other radio stations.

Selecting a preset radio station

- In the tuner mode, press **◀** or **▶**.
→ The preset number, radio frequency, and waveband are displayed.

Deleting a preset radio station

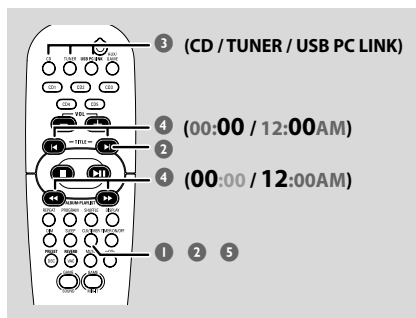
- Press and hold **■** until "PRESET DELETED" is displayed.
→ The current preset radio station will be deleted.
→ All other preset radio stations with higher numbers are decreased by one.

Timer setting

The system can switch on to CD, TUNER or USB PC LINK mode automatically at a preset time, serving as an alarm to wake you up.

IMPORTANT!

- Before setting the timer, ensure that the clock is set correctly.
- The volume of the timer will increase gradually to the last tuned volume level. If the last tuned volume level is too low, the set will then increase to a predetermined minimum audible level.



- 1 Press and hold **CLK/TIMER** (or **CLOCK•TIMER** on main unit) until "SELECT CLOCK OR TIMER" is displayed.
- 2 Press **▶** to change the display to "TIMER" and press **CLK/TIMER** again to confirm.
- 3 Press **CD** or **TUNER** or **USB PC LINK** to select the wake-up source.
 - The selected source will be lighted while other available sources are flashing.
- 4 Press **◀◀** or **▶▶** (for hours) and **◀** or **▶** (for minutes) repeatedly to set the wake-up time.
- 5 Press **CLK/TIMER** to store the setting.
 - The timer will always be switched on once it has been set.
 - icon remains on the display. It indicates the timer is activated.

- **At the preset time, the selected sound source will be played for 30 minutes before it switches to Eco Power standby mode** (if no button is being pressed within the time frame).

- **CD** – playing the first track of the last selected disc. If the last selected disc tray is empty, it will switch to the next available disc. If all the disc trays are not available, it will switch to Tuner mode.
- **TUNER** – playing the last tuned radio station.
- **USB PC LINK** – playing the last selected playlist. If the connection fails, it will switch to Tuner mode. Refer to "USB PC Link" for proper connection and setup before use.

Activating/deactivating the timer

- Press **TIMER ON/OFF** on the remote control to turn off the timer or turn on to the last setting again.
 - If activated, the timer information will display for a few seconds, then the system resumes to the last active source or stays in the standby mode.
 - If deactivated, "CANCEL" is displayed.

Notes:


- The system will exit the timer setting mode if no button is pressed within 90 seconds.
- The USB timer does not function when the computer is in the standby mode.

Sleep timer setting

The sleep timer enables the system to switch to the Eco Power standby mode automatically at a preset time.

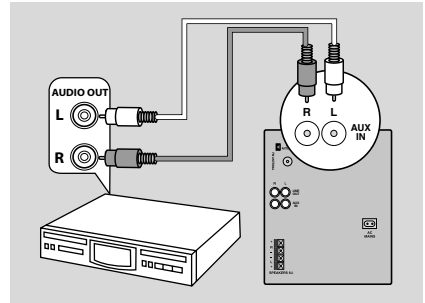
- 1 Press **SLEEP** repeatedly until it reaches the desired preset turn-off time.
 - The selections are as follows (time in minutes):
 15 → 30 → 45 → 60 → 90 → 120 →
 OFF → 15 ...
 - **SLEEP** is shown, except for the "OFF" mode.
 - To view or change the setting, repeat the above.
- 2 Before the system switches to the Eco Power standby mode, a countdown of 10 seconds is displayed.
 "SLEEP 10" → "SLEEP 9".... → "SLEEP 1" → "SLEEP"

To cancel the sleep timer function

- Press **SLEEP** repeatedly until "OFF" is displayed, or press the **STANDBY ON**  button.

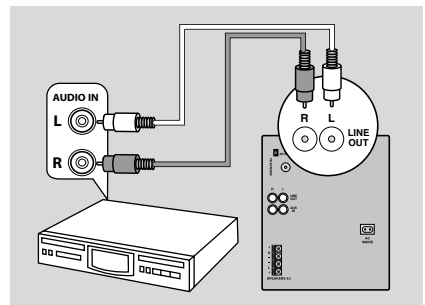
Listening to an external device

You can listen to the sound of the connected external device through your system's speakers.



- 1 Use the red/white audio cables to connect the system's **AUX IN (R/L)** terminals to the AUDIO OUT terminals on another audio/visual device (such as a TV, VCR, Laser Disc player, DVD player or CD recorder).
- 2 Press **AUX/GAME** until "AUX" is displayed.
- 3 Press **PLAY** on the connected device to start playback.

Listening to an external device



- Use the red/white audio cables to connect the system's **LINE OUT (R/L)** terminals to the AUDIO IN terminals on a recording device (such as CD/Tape recorder).

Notes:

- All the sound control features (DSC, VAC for example) are available for selection.
- Always refer to the owner's manual of the other equipment for complete connection and use details.

AMPLIFIER

Output power	500 W total power
.....	2 x 250 W RMS*
.....	2 x 200 W FTC*
Signal-to-noise ratio	≥ 62 dBA (IEC)
Frequency response	63 – 16000 Hz, ≤ -3 dB
Input sensitivity	
AUX In	640 mV
Gameport.....	640 mV
Output	
Speakers	≥ 8 Ω
Headphones	32 Ω – 1000 Ω
* (8 Ω, 60Hz - 12.5 kHz, 10%THD)	

DISC PLAYER

Programmable tracks	99
Frequency response	50 – 18000 Hz, -3 dB
Signal-to-noise ratio	≥ 62 dBA
Channel separation	≥ 35 dB (1 kHz)
MPEG 1 Layer 3 (MP3-CD)	MPEG AUDIO
MP3-CD bit rate	32-256 kbps
.....	(128 kbps advised)
Sampling frequencies	32, 44.1, 48 kHz

USB

Frequency response	50 – 18000 Hz, ≤ ±3 dB
Signal-to-noise ratio	≥ 62 dBA
Channel separation	≥ 35 dB (1 kHz)
Total harmonic distortion.....	< 0.3% (1 kHz)

TUNER

FM wave range	87.5 – 108 MHz
AM wave range	530 – 1700 kHz
Number of presets	40
Antenna	
FM	300 Ω wire
AM	Loop antenna

SPEAKERS

System	3 way, Bass reflex
Impedance	8 Ω
Woofer	1 x 6.5"
Tweeter	1 x 2" Ferro fluid cooled
Dimensions (w x h x d) ..	348 x 322 x 245(mm)
.....	13.7" x 12.68" x 9.65"(Inch)
Weight	4.35 kg each/9.57 pounds each

GENERAL

Material/finish	Polystyrene/Metal
AC Power	120V / 60 Hz
Power Consumption	
Active	130 W
Standby	< 25 W
Eco Power Standby	< 1 W
Dimensions (w x h x d) .	265 x 322 x 390 (mm)
.....	10.43" x 12.68" x 15.35"(Inch)
Weight (without speakers)	8.6 kg /18.92 pounds

Specifications and external appearance are subject to change without notice.

Troubleshooting

WARNING

Under no circumstances should you try to repair the system yourself, as this will invalidate the warranty. Do not open the system as there is a risk of electric shock.

If a fault occurs, first check the points listed below before taking the system for repair. If you are unable to remedy a problem by following these hints, consult your dealer or Philips for help.

Problem	Solution
Auto Installation of the Installer CD-ROM did not install the Philips Sound Agent 2 onto my PC.	<ul style="list-style-type: none">✓ Check that your PC's Operating System is running on Windows 2000/XP.
When in USB PC LINK mode, "NO CONNECTION" is displayed.	<ul style="list-style-type: none">✓ Check the connection between your PC and the system and the initial setup required, see "Connections" and "USB PC Link".✓ Make sure the connected PC is turned on.
I want the minimum effect from the Philips Sound Agent 2 sound mode when listening to MP3 music streaming via USB PC Link.	<ul style="list-style-type: none">✓ Select the PRESET - Neutral mode.✓ Select the REVERB - No environment mode.
Radio reception is poor.	<ul style="list-style-type: none">✓ If the signal is too weak, adjust the antenna or connect an external antenna for better reception.✓ Increase the distance between the system and your TV or VCR.
"NO DISC" is displayed or the disc cannot be played.	<ul style="list-style-type: none">✓ Insert a disc.✓ Load in the disc with label facing right.✓ Replace or clean the disc, see "Care and safety information".✓ Use a finalised CD-R(W) or a correct format disc.
The system does not react when buttons are pressed.	<ul style="list-style-type: none">✓ Remove and reconnect the AC power cord and switch on the system again.
Sound cannot be heard or is of poor quality.	<ul style="list-style-type: none">✓ Adjust the volume.✓ Disconnect the headphones.✓ Check that the speakers are connected correctly.✓ Check that the AC power cord is connected properly.✓ When in USB PC LINK mode, check that the PC's volume is not put into mute.✓ When playing CD from PC's CD drive, refer to "USB PC Link - Enable digital CD audio output".

Refer to the FAQ (Frequently Asked Questions) on the supplied CD-ROM or visit our website "www.audio.philips.com" for latest update on FAQ.

Problem	Solution
<p>The remote control does not function properly.</p>	<ul style="list-style-type: none"> ✓ Select the source (CD or TUNER, for example) before pressing the function button (▶ , ◀◀, ▶▶). ✓ Reduce the distance between the remote control and the system. ✓ Replace the battery. ✓ Point the remote control directly toward the IR sensor.
<p>The timer is not working.</p>	<ul style="list-style-type: none"> ✓ Set the clock correctly. ✓ Press TIMER ON/OFF to switch on the timer.
<p>The system displays features automatically and buttons start flashing.</p>	<ul style="list-style-type: none"> ✓ Press and hold DEMO STOP on the main unit to switch off the demonstration mode.
<p>“UACB error” and “Audio Set is not connected/nor filter driver is not loaded” message prompts up on Computer screen in Windows XP.</p>	<ul style="list-style-type: none"> ✓ Reboot the computer.

Refer to the FAQ (Frequently Asked Questions) on the supplied CD-ROM or visit our website “www.audio.philips.com” for latest update on FAQ.

LIMITED WARRANTY

AUDIO SYSTEM

One Year Free Labor

One Year Free Service on Parts

This product must be carried in for repair.

WHO IS COVERED?

You must have proof of purchase to receive warranty service. A sales receipt or other document showing that you purchased the product is considered proof of purchase.

WHAT IS COVERED?

Warranty coverage begins the day you buy your product. For one year thereafter, all parts will be repaired or replaced, and labor is free. After one year from the day of purchase, you pay for the replacement or repair of all parts, and for all labor charges.

All parts, including repaired and replaced parts, are covered only for the original warranty period. When the warranty on the product expires, the warranty on all replaced and repaired parts also expires.

WHAT IS EXCLUDED?

Your warranty does not cover:

- labor charges for installation or setup of the product, adjustment of customer controls on the product, and installation or repair of antenna systems outside of the product.
- product repair and/or part replacement because of misuse, accident, unauthorized repair or other cause not within the control of Philips.
- reception problems caused by signal conditions or cable or antenna systems outside the unit.
- a product that requires modification or adaptation to enable it to operate in any country other than the country for which it was designed, manufactured, approved and/or authorized, or repair of products damaged by these modifications.
- incidental or consequential damages resulting from the product. (Some states do not allow the exclusion of incidental or consequential damages, so the above exclusion may not apply to you. This includes, but is not limited to, prerecorded material, whether copyrighted or not copyrighted.)
- a product that is used for commercial or institutional purposes.

WHERE IS SERVICE AVAILABLE?

Warranty service is available in all countries where the product is officially distributed by Philips. In countries where Philips does not distribute the product, the local Philips service organization will attempt to provide service (although there may be a delay if the appropriate spare parts and technical manual(s) are not readily available).

MAKE SURE YOU KEEP...

Please keep your sales receipt or other document showing proof of purchase. Attach it to this owner's manual and keep both nearby. Also keep the original box and packing material in case you need to return your product.

BEFORE REQUESTING SERVICE...

Please check your owner's manual for assistance. If you have additional questions, call us at 1-800-531-0039.

TO GET WARRANTY SERVICE IN U.S.A., PUERTO RICO, OR U.S. VIRGIN ISLANDS...

Take the product to a Philips factory service center (see enclosed list) or authorized service center for repair. When the product has been repaired, you must pick up the unit at the center. Centers may keep defective parts.

(In U.S.A., Puerto Rico, and U.S. Virgin Islands, all implied warranties, including implied warranties of merchantability and fitness for a particular purpose, are limited in duration to the duration of this express warranty. But, because some states do not allow limitations on how long an implied warranty may last, this limitation may not apply to you.)

TO GET WARRANTY SERVICE IN CANADA...

Please contact Philips at:

1-800-661-6162 (French Speaking)

1-800-531-0039 (English or Spanish Speaking)

(In Canada, this warranty is given in lieu of all other warranties. No other warranties are expressed or implied, including any implied warranties of merchantability or fitness for a particular purpose. Philips is not liable under any circumstances for any direct, indirect, special, incidental or consequential damages, howsoever incurred, even if notified of the possibility of such damages.)

REMEMBER...

Please record below the model and serial numbers found on the product. Also, please fill out and mail your warranty registration card promptly. It will be easier for us to notify you if necessary.

MODEL # _____

SERIAL # _____

This warranty gives you specific legal rights. You may have other rights which vary from state/province to state/province.

Philips, P.O. Box 520890, Miami, FL 33152, USA, (402) 536-4171

EL4965E007 / 8-02

Free Manuals Download Website

<http://myh66.com>

<http://usermanuals.us>

<http://www.somanuals.com>

<http://www.4manuals.cc>

<http://www.manual-lib.com>

<http://www.404manual.com>

<http://www.luxmanual.com>

<http://aubethermostatmanual.com>

Golf course search by state

<http://golfingnear.com>

Email search by domain

<http://emailbydomain.com>

Auto manuals search

<http://auto.somanuals.com>

TV manuals search

<http://tv.somanuals.com>