

Quick Start Guide



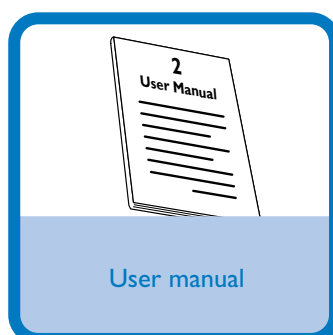
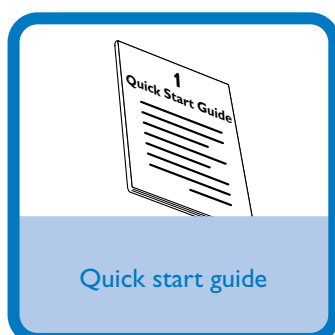
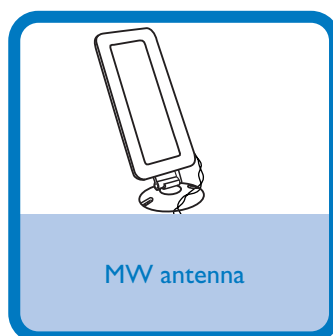
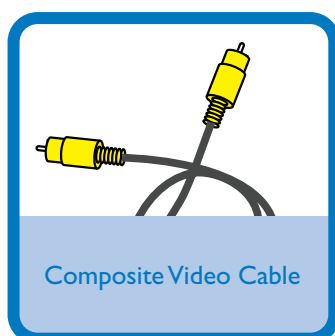
Step A *Connect*

Step B *Setup*

Step C *Enjoy*

What's in the Box?

You should find these items upon opening the box.



Step A Connect

Important!

– Before connecting the AC power cord to the wall outlet, make sure that the VOLTAGE SELECTOR (located on the rear of the system) is adjusted to match the local power voltage.

Tip

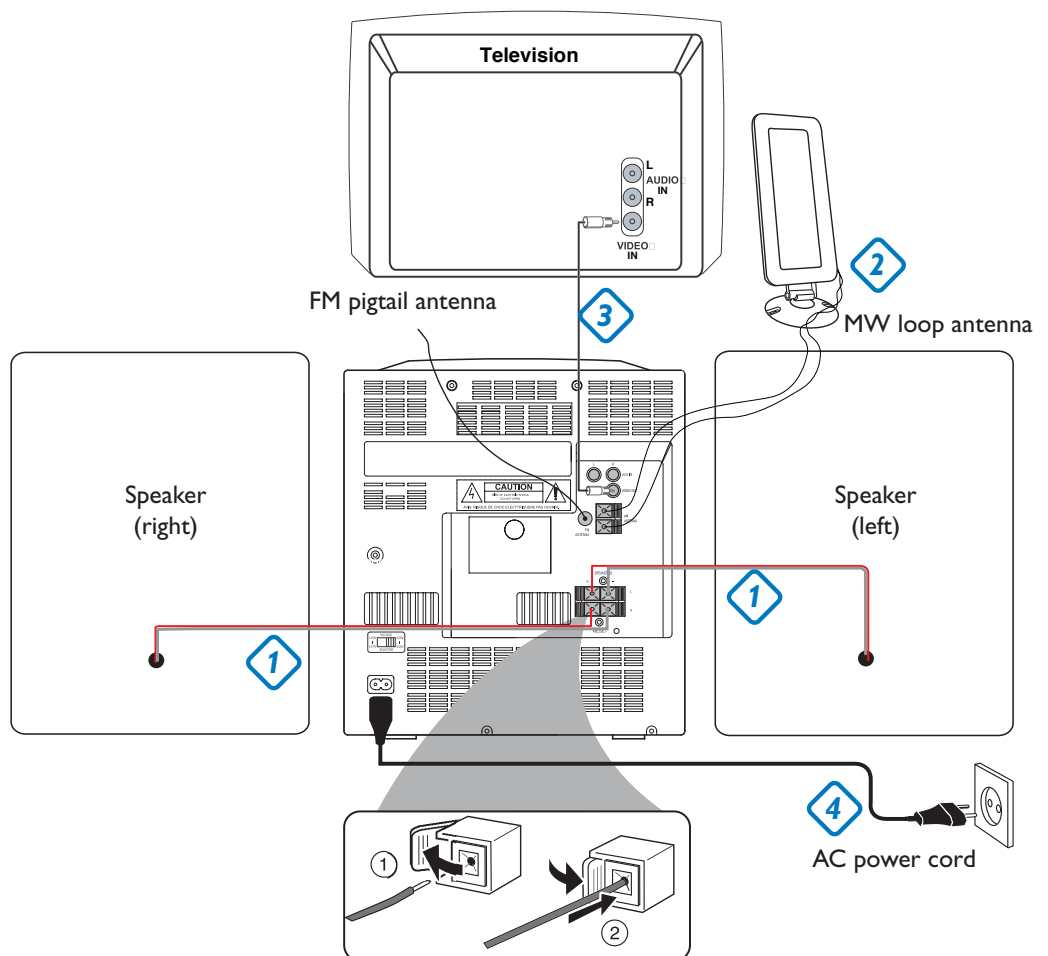
– It is unnecessary to connect the FM pigtail antenna since it is fixed to the main unit.

1 Connect the speaker wires to the system's SPEAKERS terminals.

2 Connect the supplied MW loop antenna.

3 Connect your FWV135 and TV using the supplied composite video cable.

4 Connect the power cord of the system to AC power outlet.



Step B Setup

Setting up the TV

Tip

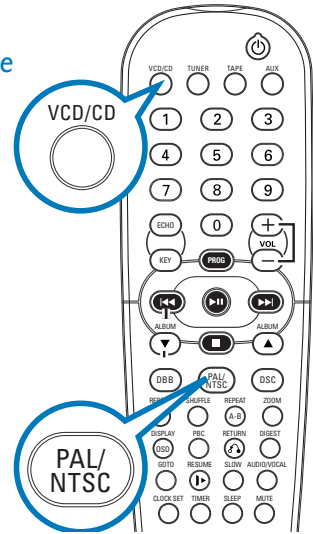
— Press and hold **PAL/NTSC** on the remote to switch between PAL and NTSC to match your TV system for clear disc viewing.

1

Press **DISC** (**VCD/CD** on the remote) to select disc source.

2

Turn on the TV and set it to the correct Video In channel.



Setting the clock

1

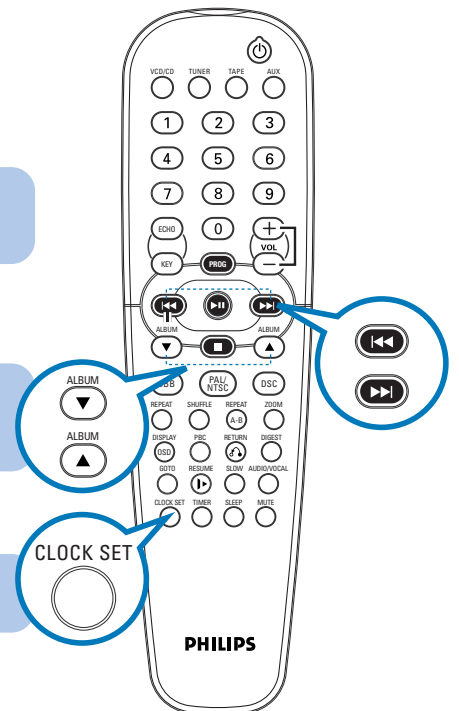
In standby mode, press briefly **CLOCK•TIMER** (or press and hold **CLOCK SET** on the remote).

2

When the clock digits flash, press **ALBUM-/+** **<</>>** (or **ALBUM ▲/▼** on the remote) to set the hours; press **TITLE -/+ <|/|>** (or **<<</>>>** on the remote) to set the minutes.

3

Press **CLOCK•TIMER** (or **CLOCK SET** on the remote) to confirm the clock setting.



Playing a disc

1

Press **PUSH** on the top of the system to open the disc tray.

2

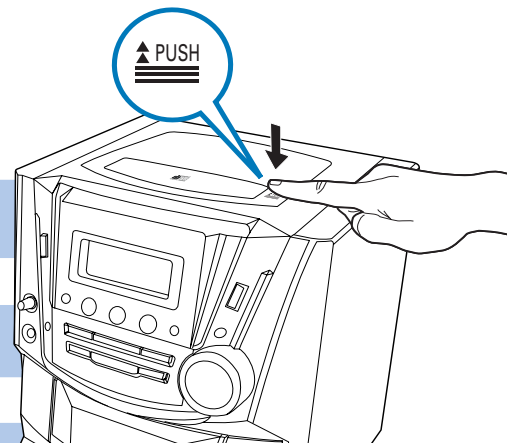
Load in a disc with the label side facing up, then close the disc door.

3

Playback will start automatically. If not, press **▶||**.

4

To stop playback, press **■**.



Programming and tuning to radio stations

1

Press **TUNER/BAND** (**TUNER** on the remote) to select tuner source (FM or MW).

2

Press and hold **SEARCH** **<<< or >>>** (**<<< / >>>** on the remote) until the frequency on the display starts running. The radio automatically tunes to a station of sufficient reception.

3

Press **PROGRAM** (**PROG** on the remote) to activate programming. "PROG" flashes on the display.

4

Press **PRESET** **<|/|>** (**<<<>>>** on the remote) to allocate a number (FM: 1 to 20; AM: 1 to 10)

5

Press **PROGRAM** (**PROG** on the remote) again to confirm the setting. "PROG" disappears from the display.

6

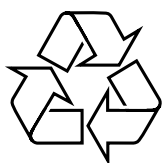
Press **PRESET** **<|/|>** (**<<<>>>** on the remote) until the desired preset station is displayed.

Tip

Detailed playback features and additional functions are described in the accompanied owner's manual.

Notes for remote control:

- First, select the source you wish to control by pressing one of the source select keys on the remote control (VCD/CD or TUNER, for example).
- Then select the desired function (**▶||**, **<<<**, **>>>** for example).



Free Manuals Download Website

<http://myh66.com>

<http://usermanuals.us>

<http://www.somanuals.com>

<http://www.4manuals.cc>

<http://www.manual-lib.com>

<http://www.404manual.com>

<http://www.luxmanual.com>

<http://aubethermostatmanual.com>

Golf course search by state

<http://golfingnear.com>

Email search by domain

<http://emailbydomain.com>

Auto manuals search

<http://auto.somanuals.com>

TV manuals search

<http://tv.somanuals.com>