

Quick Start Guide



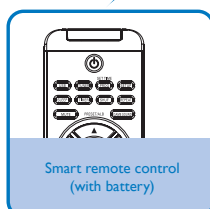
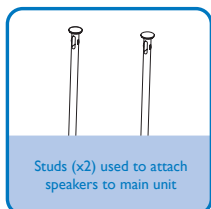
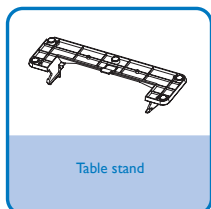
Step A *Connect*

Step B *Setup*

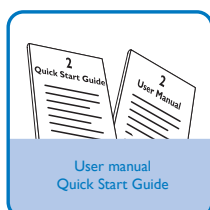
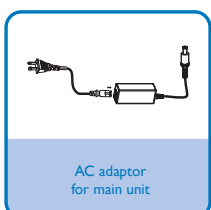
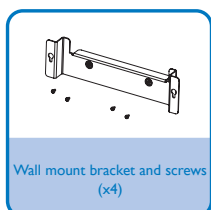
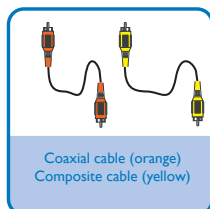
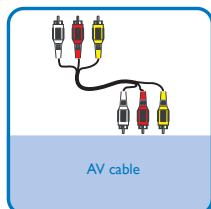
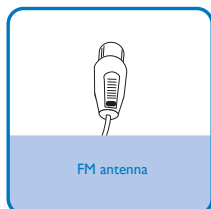
Step C *Enjoy*

What's in the Box?

You should find these items upon opening the box.



Pull out the plastic protective sheet before use.



Step A **Connect**

Tips

- See the User Manual for how to mount the main unit and speakers onto wall.
- See “Connect AV devices” for more AV connection options.
- For connection and operation of your AV devices, see the respective user manuals.

Note:

- If automatic setup of wireless connection fails, see “Set up wireless connection manually” in the User Manual for the solution.

1

Attach the speakers to the main unit.

2

Slide the table stand onto the bottom of the main unit.

3

Place the main unit and speakers.

4

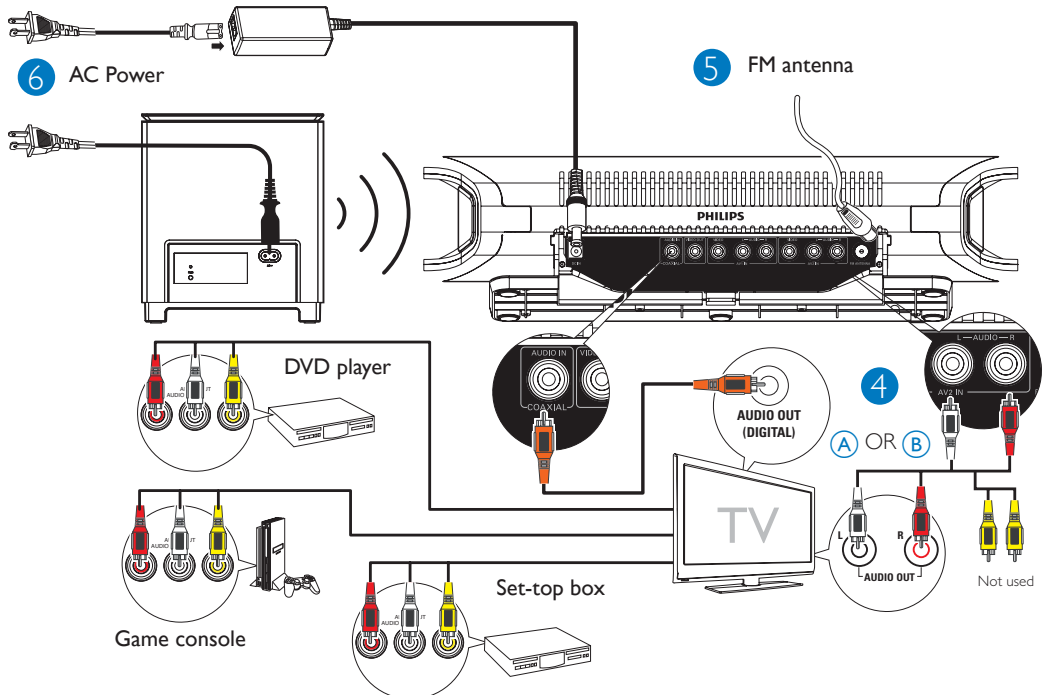
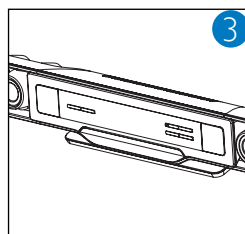
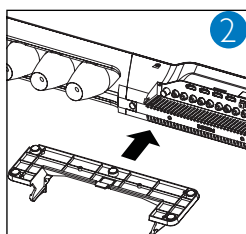
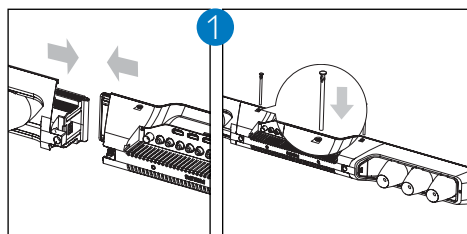
Connect the audio sockets of the system and TV with the supplied coaxial cable (A) or the white/red connectors of the supplied AV cable (B).

5

Connect the FM antenna.

6


Connect the power cords of the main unit and wireless subwoofer.
→ Wireless connection sets up automatically.



Step B Setup

Setting the clock

IMPORTANT!

– To set clock in the Eco Power Standby mode, first press and hold  for more than 2 seconds to switch to the standby mode.

1

In standby mode, press and hold SET TIME/PRO.

2

When the hour digits flash, press VOL +/- to set the hours.

3

Press SET TIME/PRO.

4

When the minute digits flash, press VOL +/- to set the minutes.

5

Press SET TIME/PRO again to confirm the time setting.

Program remote control

1

Place the smart remote control (A) within 1mm-10mm distance from the other remote control (B).

2

Press LEARN for 2 seconds to activate the learning mode.
→ A blue indicator on the smart remote control (A) lights up.

3

Press the button on the other remote control (B) that is to be stored on the smart remote control (A).
→ If the code is received successfully, the blue indicator flashes.

4

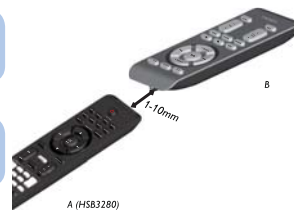
Press one of the 12 white learning buttons on the smart remote control (A) to store the code of this button.
→ If the code is stored successfully, the indicator flashes green for 2 seconds, then turns blue again.

5

Repeat steps 3 and 4 to program more buttons on the smart remote control (A).

6

Press LEARN to exit the learning mode.



Notes:

- If there is no operation within 8 seconds, the system quits the learning mode automatically and the indicator turns off.
- During the learning process, the normal remote control functions are disabled.
- By default, the remote control codes of a Philips TV are stored in the smart remote control. The available preset buttons are POWER, AV, ▲CH▼, ▲VOL▼, MUTE and SLEEP.

Step C *Enjoy*

Enjoy sound of a connected AV device through the soundbar system

1

Select an AV source.

2

Select the feature and settings you want.

Programming and tuning to radio stations

1

Press **TUNER** to select tuner (FM) source.

2

Press and hold **SET TIME/ PROG** for more than two seconds to program all available stations in order of waveband.

3

Press **PRESET/ALB/▲▼** until the desired preset station is displayed.

Playing a USB mass storage device

1

Flip open the cover on the front panel.

2

Insert the USB plug of a USB device into the  socket.

3

Press **USB** to select the USB source.
→ The total number of tracks is displayed.

4

Press **PRESET/ALB/▲▼** to select a folder.

5

Press **◀ / ▶** to select a file.

6

Press **▶ ||** to start play.



Tip

Detailed playback features and additional functions are described in the accompany owner's manual.

Free Manuals Download Website

<http://myh66.com>

<http://usermanuals.us>

<http://www.somanuals.com>

<http://www.4manuals.cc>

<http://www.manual-lib.com>

<http://www.404manual.com>

<http://www.luxmanual.com>

<http://aubethermostatmanual.com>

Golf course search by state

<http://golfingnear.com>

Email search by domain

<http://emailbydomain.com>

Auto manuals search

<http://auto.somanuals.com>

TV manuals search

<http://tv.somanuals.com>