

DVD VIDEO DIGITAL SURROUND SYSTEM



**LX8000SA**



**LX7000SA**



*Let's make things better.*



**PHILIPS**



## Hook Up Guide

### LX8000SA • LX7000SA

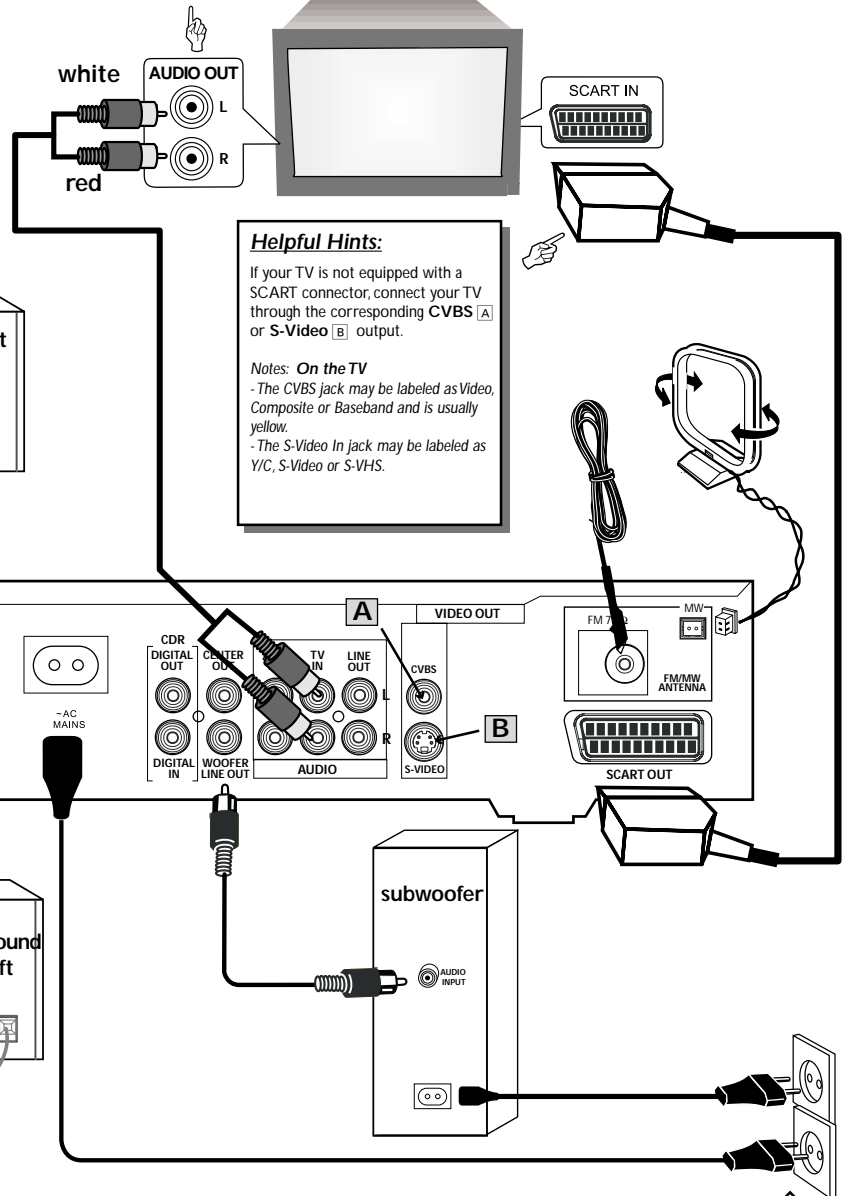
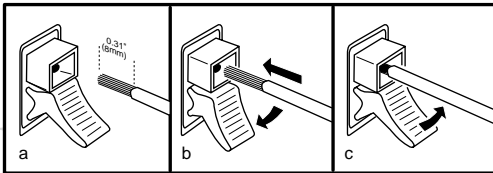
#### Helpful Hints:

You can listen to normal TV broadcast channels through the home cinema sound system from such an audio connection.

When listening to TV programmes, you have to set the DVD system to TV/AV mode in order for the sound to be heard.

**This Hook Up Guide shows the basic setup of your DVD home cinema system and the connections to your TV!**

#### Connecting Speaker Cable

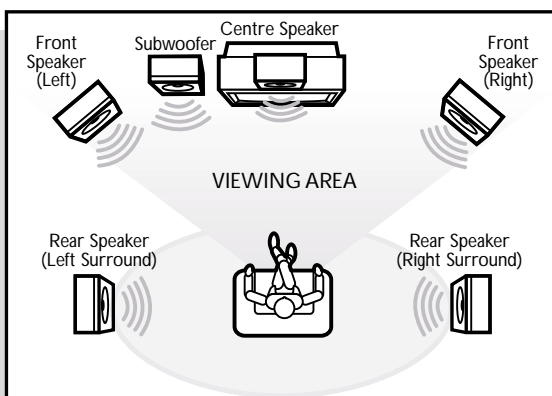


#### Helpful Hints:

If your TV is not equipped with a SCART connector, connect your TV through the corresponding CVBS [A] or S-Video [B] output.

**Notes: On the TV**  
- The CVBS jack may be labeled as Video, Composite or Baseband and is usually yellow.  
- The S-Video In jack may be labeled as Y/C, S-Video or S-VHS.

#### Recommended Speaker Setup



Connect the DVD system and subwoofer to the power outlets only after you have finished hooking up everything.

Speakers	⊖	⊕
Front Right (R) (FR)	black	red
Front Left (L) (FL)	black	white
Centre (C)	black	green
Surround Right (SR)	black	grey
Surround Left (SL)	black	blue



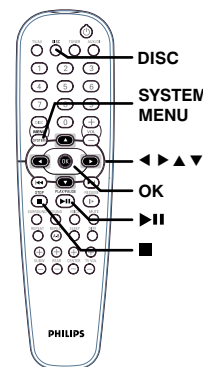
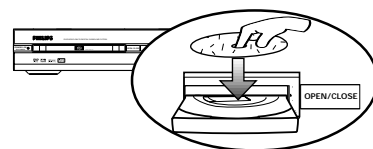
**Make sure your DVD system and TV are connected and turned on!**

⇒ **Turning on the power and listening to preset radio stations**

- 1 "AUTO INSTALL - PRESS PLAY" will appear on the display. If not, press and hold ►|| on the system.
- 2 Press ►|| on the system again to start installing all available radio stations.
- 3 Once completed, the last tuned radio station will play. Press ◀▶ to select a preset radio station.  
To tune to a non-preset radio station, press |◀◀ ▶▶| briefly and repeatedly.

⇒ **Playing a disc**

- 1 With the DVD system's power on, press **DISC** on the remote control.
- 2 Turn on the TV power and set to the correct Video In channel or Audio/Video mode. The DVD system's screen saver will show on the TV.  
The TV's Video Input channel may be called AUX or AUXILIARY IN, AUDIO/VIDEO or A/V IN, EXT 1 or EXT 2, etc. These channels are often near channel 00. See your TV manual for details.
- 3 Press **OPEN/CLOSE** on the system and load a disc, then press **OPEN/CLOSE** again to close the disc tray.
- 4 Playback will start automatically. If not, press ►||.  
If a disc menu appears, use ▲▼◀▶ to make the necessary selection, then press OK. Or, use the numeric keypad on the remote control to select features. Follow the instructions given on the disc menu.
- 5 During playback, you are able to change certain operations or features (for example, change the subtitle language, play in slow motion speed, etc.). Press **SYSTEM MENU** on the remote control, then use ▲▼◀▶ to select your preferred options and press OK to confirm. To remove the menu bar, press **SYSTEM MENU** again.  
Please refer to the owner's manual "Special DVD/VCD features" for more information.
- 6 To stop playback, press ■.



**Region Codes**

DVDs must be labeled for ALL regions or for Region 2 in order to play on this DVD system.

⇒ **Playing other equipment connected to your DVD system**

- 1 To use your DVD system's home cinema surround capabilities, connect other equipment and select the correct input source.  
Please refer to the user's manual "Connecting Additional Equipment" for more information.
- 2 Turn on and/or press **PLAY** on the equipment to start playback.  
If necessary, connect the Video Output of the connected equipment (VCR or laser disc player) to TV for viewing purposes.

Connect ...		Select input source from the remote control
LX7000SA / LX8000SA		
DIGITAL IN	CD Recorder "DIGITAL OUT"	Press  to select "DI".
AUX IN	VCR / Laser disc player "AUDIO OUT"	Press  to select "AU".
TV IN	Television "AUDIO OUT"	Press .

Detailed playback features and additional functions are described in the accompanying user's manual.

# Important Note

## Important notes for users in the U.K.

### Mains plug

This apparatus is fitted with an approved 13 Amp plug. To change a fuse in this type of plug proceed as follows:

- 1 Remove fuse cover and fuse.
- 2 Fix new fuse which should be a BS1362 5 Amp, A.S.T.A. or BSI approved type.
- 3 Refit the fuse cover.

If the fitted plug is not suitable for your socket outlets, it should be cut off and an appropriate plug fitted in its place.

If the mains plug contains a fuse, this should have a value of 5 Amp. If a plug without a fuse is used, the fuse at the distribution board should not be greater than 5 Amp.

*Note: The severed plug must be disposed of to avoid a possible shock hazard should it be inserted into a 13 Amp socket elsewhere.*

### How to connect a plug

The wires in the mains lead are coloured with the following code: blue = neutral (N), brown = live (L).

- As these colours may not correspond with the colour markings identifying the terminals in your plug, proceed as follows:
  - Connect the blue wire to the terminal marked N or coloured black.
  - Connect the brown wire to the terminal marked L or coloured red.
  - Do not connect either wire to the earth terminal in the plug, marked E (or  $\perp$ ) or coloured green (or green and yellow).

Before replacing the plug cover, make certain that the cord grip is clamped over the sheath of the lead - not simply over the two wires.

### Copyright in the U.K.

Recording and playback of material may require consent. See Copyright Act 1956 and The Performer's Protection Acts 1958 to 1972.

**This product complies with the radio interference requirements of the European Community.**

## CAUTION

**Use of controls or adjustments or performance of procedures other than herein may result in hazardous radiation exposure or other unsafe operation.**

### Laser

Type	Semiconductor laser GaAlAs
Wave length	650nm
Output Power	7mW
Beam divergence	60 degree

## Italia

### DICHIARAZIONE DI CONFORMITA'

Si dichiara che l'apparecchio LX8000SA, LX7000SA Philips risponde alle prescrizioni dell'art. 2 comma 1 del D.M. 28 Agosto 1995 n. 548.

Fatto a Eindhoven

Philips Consumer Electronics  
Philips, Glaslaan 2  
5616 JB Eindhoven, The Netherlands

## Norge

Typeskilt finnes på apparatens underside.

**Observer: Nettbryteren er sekundert innkopleet. Den innebygde nettdelen er derfor ikke frakopleet nettet så lenge apparatet er tilsluttet nettkontakten.**

For å redusere faren for brann eller elektrisk støt, skal apparatet ikke utsettes for regn eller fuktighet.

## DK

**Advarsel: Usynlig laserstråling ved åbning når sikkerhedsafbrydere er ude af funktion. Undgå utsættelse for stråling.**

**Bemærk: Netafbryderen er sekundært indkoblet og afbryder ikke strømmen fra nettet. Den indbyggede netdel er derfor tilsluttet til lysnettet så længe netstikket sidder i stikkontakten.**

## S

**Klass 1 laseraparät**

**Varning! Om apparaten används på annat sätt än i denna bruksanvisning specificerats, kan användaren utsättas för osynlig laserstråling, som överskrider gränsen för laserklass 1.**

**Observera! Stömbrytaren är sekundärt kopplad och bryter inte strömmen från nätet. Den inbyggda nettdelen är därför ansluten till elnätet så länge stickproppen sitter i vägguttaget.**

## SF

**Luokan 1 laserlaite**

**Varoitus! Laitteen käyttäminen muulla kuin tässä käyttöohjeessa mainitulla tavalla saattaa altistaa käyttäjän turvallisuusluokan 1 ylittävälle näkymättömälle lasersäteilylle.**

**Oikeus muutoksiin varataan. Laite ei saa olla alttiina tippu- ja roiskevedelle.**

**Huom. Toiminnanvalitsin on kytketty toisiopuolelle, eikä se kytkke laitetta irti sähköverkosta.**

**Sisäänrakennettu verkko-osa on kytketty sähköverkkoon aina silloin, kun pistoke on pistorasiassa.**

English	5
Français	30
Español	55
Deutsch	80
Nederlands	105
Italiano	130
Svenska	155
Dansk	180
Suomi	205
Português	230
Ελληνικά	255
Polski	283
Русский	308

English

Français

Español

Deutsch

Nederlands

Italiano

Svenska

Dansk

Suomi

Português

Ελληνικά

Polski

Русский

CAUTION

VISIBLE AND INVISIBLE LASER RADIATION WHEN  
OPEN AVOID EXPOSURE TO BEAM

ADVARSEL

SYNLIG OG USYNLIG LASERSTRÅLING VED ÅBNING  
UNDGÅ UDSÆTTELSE FOR STRÅLING

VARNING

SYNLIG OCH OSYNLIG LASERSTRÅLNING NÄR  
DENNA DEL ÄR ÖPPNAD BETRAKTA EJ STRÅLEN

VARO!

AVATTAESSA OLET ALTTIINA NÄKYVÄLLE JA  
NÄKYMÄTTÖMÄLLE LASER SÄTEILYLLE. ÄLÄ KATSO  
SÄTEESEEN

VORSICHT

SICHTBARE UND UNSICHTBARE LASERSTRAHLUNG  
WENN ABDECKUNG GEÖFFNET NICHT DEM  
STRAHL AUSSETZEN

ATTENTION

RAYONNEMENT LASER VISIBLE ET INVISIBLE EN CAS  
D'OUVERTURE EXPOSITION DANGEREUSE AU  
FAISCEAU

*Manufactured under license from Dolby Laboratories.  
"Dolby", "Pro-Logic" and the double-D symbol are  
trademarks of Dolby Laboratories. Confidential  
Unpublished Works. ©1992-1997 Dolby Laboratories, Inc.  
All rights reserved.*

*Manufactured under license from Digital Theater Systems,  
inc. US Pat. No. 5,451,942 and other worldwide patents  
issued and pending. "DTS" and "DTS Digital Surround" are  
trademarks of Digital Theater Systems, Inc. 1996 Digital  
Theater Systems, Inc. All rights reserved.*

*This product incorporates copyright protection technology  
that is protected by method claims of certain U.S. patents  
and other intellectual property rights owned by Macrovision  
Corporation and other rights owners. Use of this copyright  
protection technology must be authorized by Macrovision  
Corporation, and is intended for home and other limited  
viewing uses only unless otherwise authorized by  
Macrovision Corporation. Reverse engineering or  
disassembly is prohibited.*

**CE** The DVD VIDEO player is in conformity  
with the EMC directive and low-voltage  
directive.

## Introduction and General Information

Features .....	6
Discs for playback .....	6
Player zone .....	
Supplied accessories .....	6
Environmental information .....	6
Installation .....	6
Maintenance .....	6

## Functional Overview

Top and Front panels .....	7
Remote Control .....	8

## Connections

Connecting antennas .....	9
MW Indoor Loop Antenna .....	
FM Indoor Antenna .....	
FM Outdoor Antenna .....	
Connecting the speakers .....	10
Connecting a TV .....	10
Connecting additional equipment .....	11
Analogue audio connections .....	
Digital audio connections .....	
Replacing the centre speaker with the TV .....	

## Preparations

Setting up the surround sound system .....	12
Placing the speakers .....	
Changing the volume level .....	
Setting up the subwoofer .....	12
Inserting batteries into the remote control .....	12
Switching on the system .....	13
NTSC/PAL Setting .....	13
System Setup (DVD) .....	13–15
Setting the picture .....	
Setting the sound .....	
Setting the language .....	
Setting the features .....	

## Access Control

Child lock (DVD/VCD) .....	16
Parental Level (DVD) .....	17
Change Country (DVD) .....	17
Change Code (DVD/VCD) .....	17

## Basic Functions

Sound Control .....	18
Selecting the surround sound mode .....	
Selecting the digital sound effect .....	
Selecting the clear voice effect .....	
Volume control .....	18
Dimming the display screen .....	18

## Operations

Discs information .....	19
Basic playback .....	19–20
Continue playback from the last stop point (DVD/VCD) .....	
Skipping to another track/chapter .....	
Fast Search .....	
Repeat play .....	
Repeat A-B .....	
Programme favourite tracks (Audio CD) .....	
Special DVD/VCD features .....	21–23
Changing subtitle language (DVD) .....	
Changing audio language .....	
Changing speaker surround output .....	
Advancing by frames .....	
Playing in slow motion .....	
Searching for a particular passage .....	
Viewing from another angle (DVD) .....	
Zooming in .....	
Moving to another title/chapter .....	
Playback from a selected point .....	
Favourite Track Selection - FTS .....	
Checking the contents of a DVD .....	
Special VCD/SVCD features .....	24
Playback Control (PBC) .....	
Special SACD, MP3 and CD features .....	24
Text information .....	
Special MP3-CD features .....	24
Supported MP3-CD format .....	
Selecting a desired album/track .....	
Repeat play .....	

## Radio Reception

Plug and Play .....	25
Tuning to radio stations .....	25
Presetting radio stations .....	25
Automatic preset from a desired preset number .....	
Manual preset of favourite radio stations .....	
Listening to preset radio stations .....	26
Erasing a preset radio station .....	26

## Clock/Timer

Clock setting .....	26
Timer setting .....	27
Deactivating the timer .....	
Activating the timer to the last preset time and source .....	
Sleep timer setting .....	27

## Specifications

## Troubleshooting

# Introduction and General Information

## Features

Your complete 7-piece 275-Watt (LX8000SA) or 200-Watt (LX7000SA) DVD Digital Home Cinema System creates the same dynamic sound qualities that you find in full-fledged cinemas and incorporates some of the best features in home theatre technology.

Features include:

### Built-in DTS and Dolby® Digital decoder, supporting Dolby® ProLogic and 3D sound

Use the Home Cinema Audio System for a movie-theatre surround sound experience.

### Additional Equipment Connections

Connect other audio and audio/visual equipments to the DVD system so you can use the system's surround sound speakers.

### Parental Level (only available in region 1 player)

Set a ratings level so your children cannot watch a DVD that has a rating higher than you set.

### Child Lock

Block specific DVDs from playing, regardless of how you set the Parental Level.

### Sleep Timer

Enable the system to switch to standby mode automatically at a preset time.

### Plug and Play

Store all available radio stations automatically when you turn on the power.

## Discs for playback

Your DVD system is able to play :

- All pre-recorded audio CDs
- All finalised audio CDR and audio CDRW discs
- All Video CDs, Super Video CDs, Super Audio CDs, and DVDs
- MP3-CDs (CD-ROMs with MP3 tracks)



## Player zone

DVD discs and players are designed with regional restrictions. Before playing a disc, make sure the disc is the same zone as your player.

The region code for this DVD system is 2.



## Supplied accessories

- a remote control with two AA batteries
- an MW loop antenna and an FM wire antenna
- an audio cable, Scart cable and centre out cable for connection with the TV.
- four satellite speakers and one centre speaker; including five speaker cables
- an active subwoofer; including a connection cable and a power cable
- a power cable for connection with the main unit
- five speaker brackets and five screws.
- four mini speaker stands and eight screws (for model LX8000SA only)
- one pair of speaker stands (for model LX8000SA only)
- this instruction booklet

If any item is damaged or missing, contact your retailer or Philips.

## Environmental information

All unnecessary packaging has been omitted. We have tried to make the packaging easy to separate into three materials: cardboard (box), polystyrene foam (buffer) and polyethylene (bags, protective foam sheet).

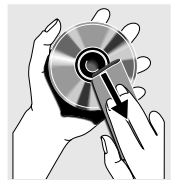
Your system consists of materials which can be recycled and reused if disassembled by a specialised company. Please observe the local regulations regarding the disposal of packaging materials, exhausted batteries and old equipment.

## Installation

- Place the system on a flat, hard, and stable surface.
- There must be sufficient room in front of the system for the drawer to open.
- In a cabinet, allows about 10cm (4 inches) of free space all around the system for adequate ventilation.
- Do not expose your system to extreme temperatures or humidity.

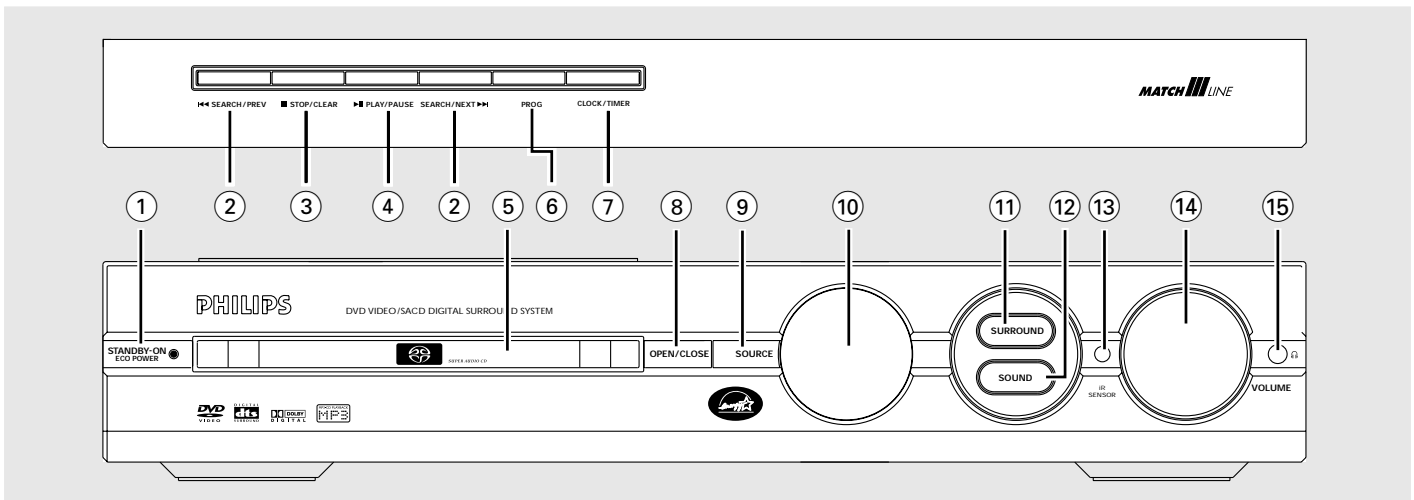
## Maintenance







- When a disc becomes dirty, clean it with a cleaning cloth. Wipe the disc from the centre out, in a straight line.
- Do not expose the system, batteries or discs to humidity, rain, sand or excessive heat (caused by heating equipment or direct sunlight). Always keep the disc tray closed to avoid dust on the lens.
- Do not use solvents such as benzene, thinner, commercially available cleaners, or anti-static spray intended for color discs.
- The lens may cloud over when the system is suddenly moved from cold to warm surroundings, making it impossible to play a disc. Leave the system in the warm environment until the moisture evaporates.





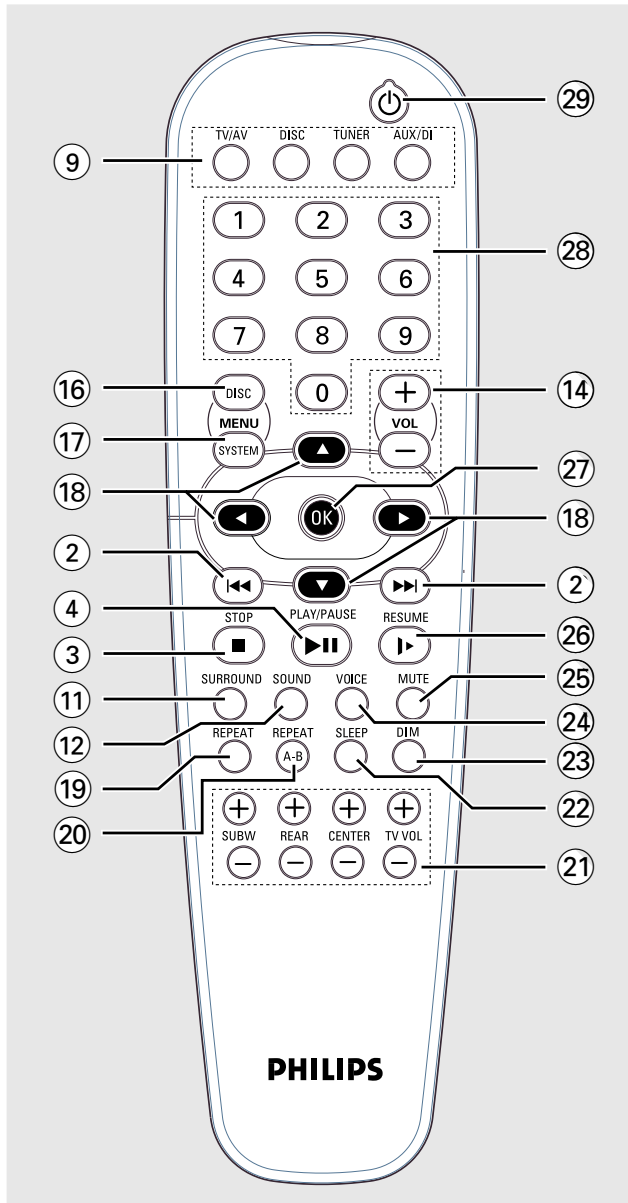
## Top and Front panels



- ① **STANDBY ON / ECO POWER** 
  - press to switch the system on or to standby mode.
  - hold down to switch the system to Eco Power standby mode.
- ② **SEARCH / PREV**  **SEARCH / NEXT** 
  - in Disc mode, press to skip to the previous/next chapter/track.
  - in Disc mode, hold down to fast reverse/forward the disc or skip to previous/next MP3 album.
  - in Tuner mode, to tune to a lower or higher radio frequency.
  - in Clock mode, to set the hours and minutes.
  - in TV/AV mode, to change Philips TV's channel (on the remote control only).
- ③ **STOP / CLEAR** 
  - in Disc mode, to stop playback or to clear a programme.
  - in Tuner mode, to stop programming or erase a preset radio station (on the system only).
  - in Clock mode, to exit clock setting or cancel a timer (on the system only).
  - in Plug and Play mode, to exit the operation.
- ④ **PLAY / PAUSE** 
  - to start or interrupt disc playback.
  - to start Plug and Play installation (on the system only).
- ⑤ **Disc Tray**
- ⑥ **PROG**
  - in Disc mode, to programme CD tracks or switch the VCD/DVD FTS (favourite track selection) on/off.
  - in Tuner mode, to programme preset radio stations.
  - in Clock mode, to select 12- or 24-hour clock mode.
- ⑦ **CLOCK / TIMER**
  - press to view or set the clock.
  - hold down to set the timer.
- ⑧ **OPEN/CLOSE**
  - to open or close the disc tray.
- ⑨ **SOURCE**
  - to select the desired source or external input source (TV/AV, DISC, TUNER, AUX or DI [Digital In]).
- ⑩ **Display screen**
  - displays current status of the system.
- ⑪ **SURROUND**
  - to select multichannel surround (Dolby Digital, DTS or Dolby Surround), 3D sound or stereo sound.
- ⑫ **SOUND**
  - to select various sound effects : CONCERT, DRAMA, ACTION, SCI-FI, CLASSIC, JAZZ, ROCK or DIGITAL.
- ⑬ **iR sensor**
  - receives signals from the remote control.
- ⑭ **VOLUME**
  - to adjust the master volume.
- ⑮ 
  - to connect headphones.

**The same functions can be accessed via the same buttons on the remote control (see next page)**

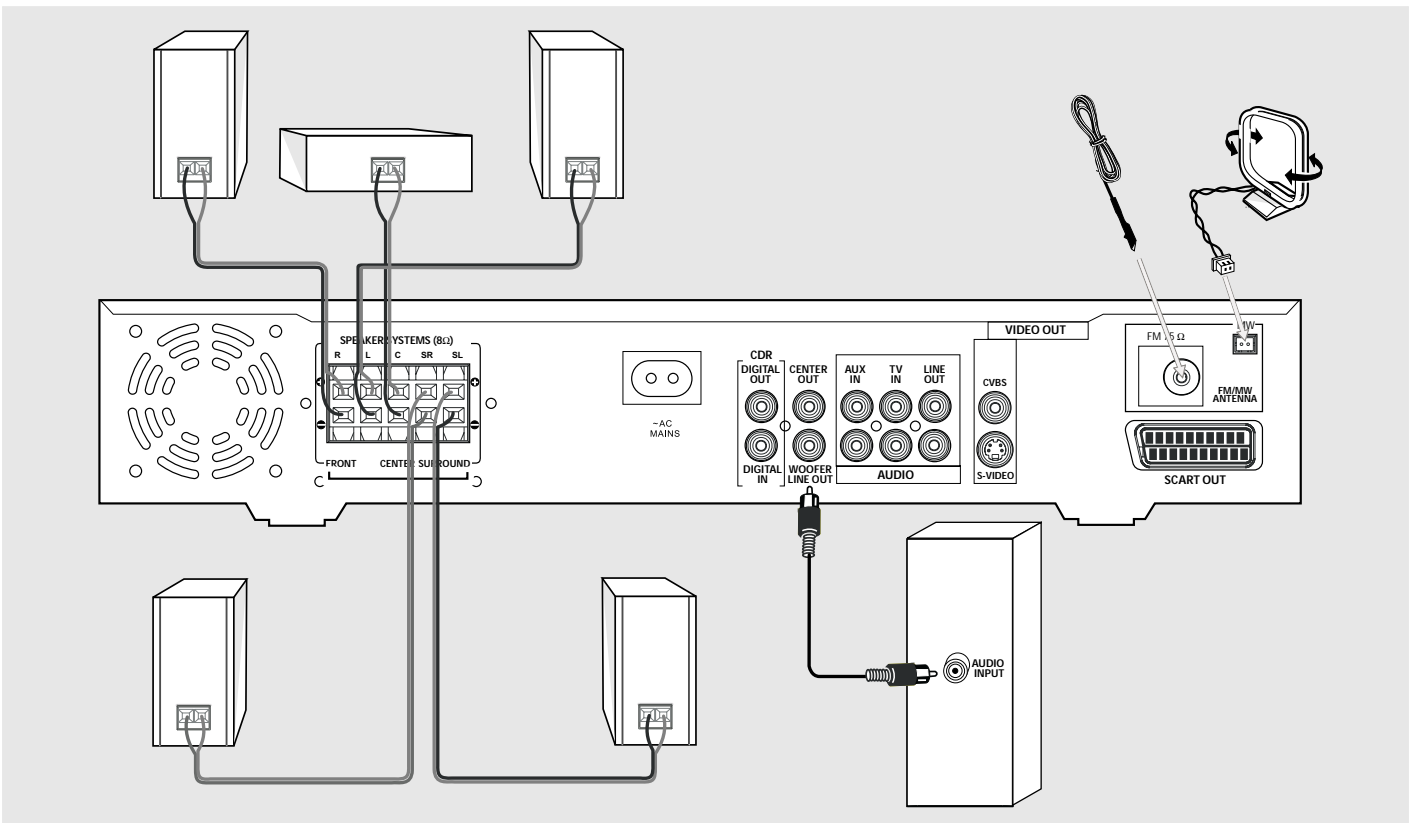
## Remote Control



### Notes for remote control:

- 1** First select the source you wish to control by pressing one of the source select keys on the remote control (for example **DISC, TUNER**).
- 2** Then select the desired function (for example **▶**, **◀◀**, **▶▶**).

- 16 DISC MENU** (in Disc mode only)
  - to enter or exit the Disc menu.
  - to switch on/off Playback Control (PBC) mode while playback stopped.
  - to return to the PBC menu during playback.
- 17 SYSTEM MENU** (in Disc mode only)
  - to enter or exit the system menu bar.
- 18 ▲▼◀▶**
  - in Tuner mode, to select a preset radio station number (◀ or ▶).
  - to select movement direction in the disc menu / system menu bar.
- 19 REPEAT**
  - to repeat chapter, track, album, title or disc.
- 20 REPEAT A-B**
  - to repeat a specific section on a disc.
- 21 SUBW + / –**
  - to adjust the subwoofer's volume level.
- REAR + / –**
  - to adjust the rear (surround) speakers' volume level.
- CENTER + / –**
  - to adjust the centre speaker's volume level.
- TV VOL + / –**
  - to adjust Philips television's volume level.
- 22 SLEEP**
  - to set the sleep (auto-off) timer function.
- 23 DIM**
  - to select a different brightness for the display screen.
- 24 VOICE**
  - to enhance the surround and dialogue in multichannel mode.
- 25 MUTE**
  - to enable or disable the sound output.
- 26 RESUME**
  - to continue disc playback after an interruption.
- 27 OK**
  - to exit or confirm the menu selection.
- 28 Numeric Keypad (0-9)**
  - in Disc mode, to enter a track/chapter number.
  - in Tuner mode, to enter a preset radio station.
  - in TV/AV mode, to enter a TV channel number.
- 29**
  - press to switch the system to standby mode.
  - hold down to switch the system to Eco Power standby mode.



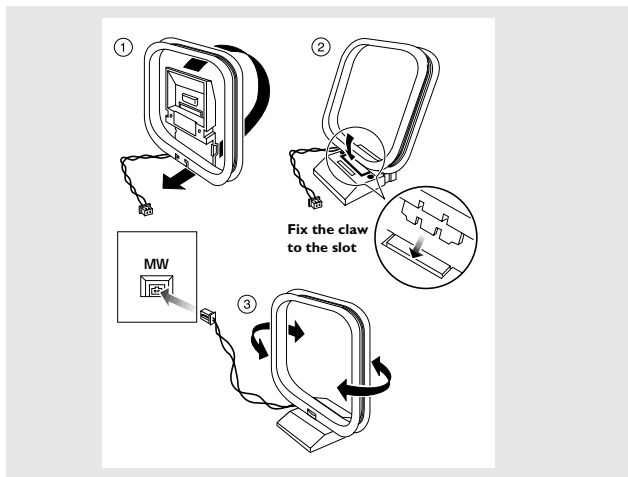
## IMPORTANT!

- Before connecting the AC power cord to the wall outlet, ensure that all other connections have been made.
- Never make or change any connections with the power switched on.
- The type plate is located at the rear or bottom of the system.

## Connecting antennas

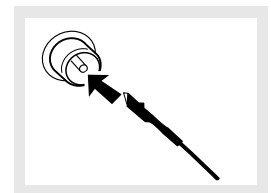
### MW Indoor Loop Antenna

Connect the supplied MW loop antenna to the **MW** jack. Position the loop antenna to receive the clearest sound.



### FM Indoor Antenna

Connect the supplied FM antenna to the **FM 75 Ω** jack. Move the antenna in various directions until the clearest signal is received.

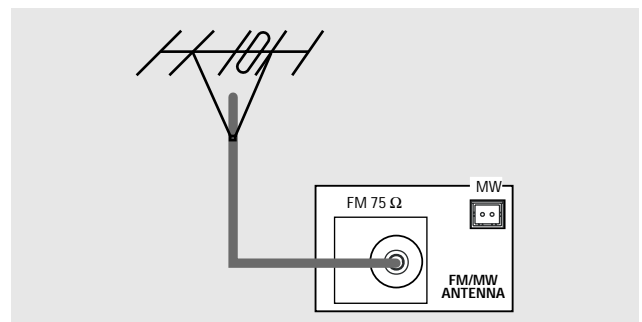


#### Note:

- Keep the antenna as far away as possible from the TV, VCR or any radiation source to prevent unwanted noise.

### FM Outdoor Antenna

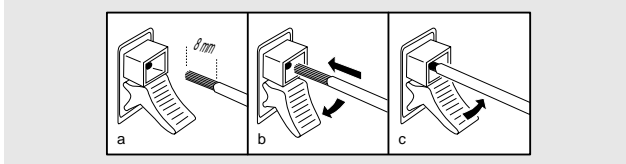
For better FM reception, use a 75 Ω coaxial cable (not supplied) to connect the system to an outdoor FM antenna as shown.



## Connecting the speakers

Connect the supplied speaker systems using the supplied speaker cables by matching the colours of the jacks and speaker cables.

- 1 Press up (or down) the clip on the speaker's jack and fully insert the stripped portion of the speaker cable into the jack, then release the clip.



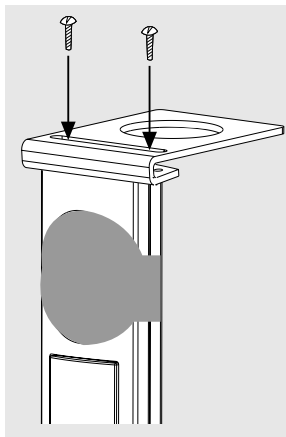
- 2 Connect the subwoofer's AUDIO INPUT jack to the **WOOFER LINE OUT** jack and then connect the speakers as follows :

Speakers	⊖	⊕
Front Right (R) (FR)	black	red
Front Left (L) (FL)	black	white
Centre (C)	black	green
Surround Right (SR)	black	grey
Surround Left (SL)	black	blue

(for model LX8000SA only)

**Before connecting the speakers;**

- Set up the speaker stands (refer to the accompanying "Installation Guide") or/and mount the speakers onto the mini speaker stands as shown in the illustration.
- Remove the protective cover only after the connection and installation of speakers are completed.



Notes:

- Ensure that the speaker cables are correctly connected. Improper connections may damage the system due to short-circuit.
- For optimal sound performance, use the supplied speakers.
- Do not connect more than one speaker to any one pair of + / - speaker jacks.
- Do not connect speakers with impedance lower than the speakers supplied. Please refer to the SPECIFICATIONS section of this manual.

## Connecting a TV

You must connect a TV to the DVD system in order to use the DVD system.

**IMPORTANT!**

**There are various ways to connect the system to a TV (as shown in the illustration below). You only need to make ONE of the best connections, depending on the capabilities of your TV system.**

**If your TV has a SCART input connector**

- 1 Use the supplied audio cables to connect the system's **AUDIO-TV IN (L/R)** jacks to the corresponding **AUDIO OUT** jacks on the TV.
- 2 Use the Scart cable to connect the system's **SCART OUT** jack to the corresponding **SCART VIDEO IN** jack on the TV.

**If your TV has a S-Video input connector**

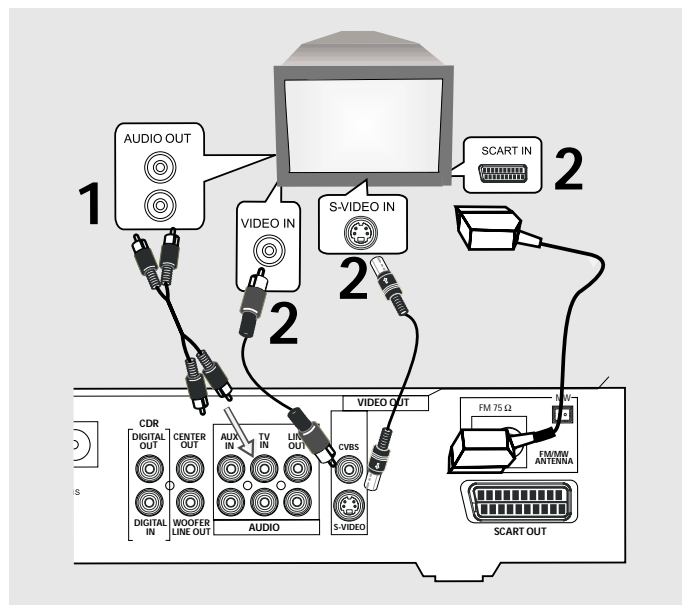
- 1 Use the supplied audio cables to connect the system's **AUDIO-TV IN (L/R)** jacks to the corresponding **AUDIO OUT** jacks on the TV.
- 2 Use the S-Video cable to connect the system's **S-VIDEO** jack to the S-Video input jack on the TV.

**If your TV is not equipped with a SCART or S-Video input connector**

- 1 Use the supplied audio cables to connect the system's **AUDIO-TV IN (L/R)** jacks to the corresponding **AUDIO OUT** jacks on the TV.
- 2 Use the video cable (not supplied) to connect the system's **CVBS** jack to the video input jack on the TV.

Note: On the TV,

- The S-Video In jack may be labeled Y/C, S-Video or S-VHS.
- The CVBS jack is usually yellow and might be labeled Video In, Composite or Baseband.



## Connecting additional equipment

You can connect other audio and audio/visual equipment to the DVD system in order to use the Home Cinema Audio System's surround sound capabilities.

### IMPORTANT!

- For connection to additional equipment, the audio/video cables are not supplied.
- When making connections, make sure the colour of cables matches the colour of jacks.
- Always refer to the instruction manual of the connected equipment to make an optimal connection.
- Some DVDs have anti-copying devices, so you will not be able to record the disc through a VCR.

## Analogue audio connections

### For listening to the other equipment

Connect the system's **AUX IN (R/L)** jacks to the AUDIO OUT jacks on the other audio/visual device (such as a VCR, Laser Disc player or cassette deck).

### For recording

Connect the system's **LINE OUT (R/L)** jacks to the AUDIO IN jacks on the recording device (such as a tape recorder or CD recorder).

## Digital audio connections

### For listening to the playback from the CD recorder

Connect the system's **DIGITAL IN** jack to the DIGITAL OUT jack on a CD recorder.

#### Notes:

- You cannot hear the SACD or MP3-CD playback if you use the digital connection.
- If the audio format of the digital input does not match the capabilities of your DVD Home Cinema System, it will produce a strong, distorted sound or no sound at all.

### For recording

Connect the system's **DIGITAL OUT** jack to the DIGITAL IN jack on a CD recorder.

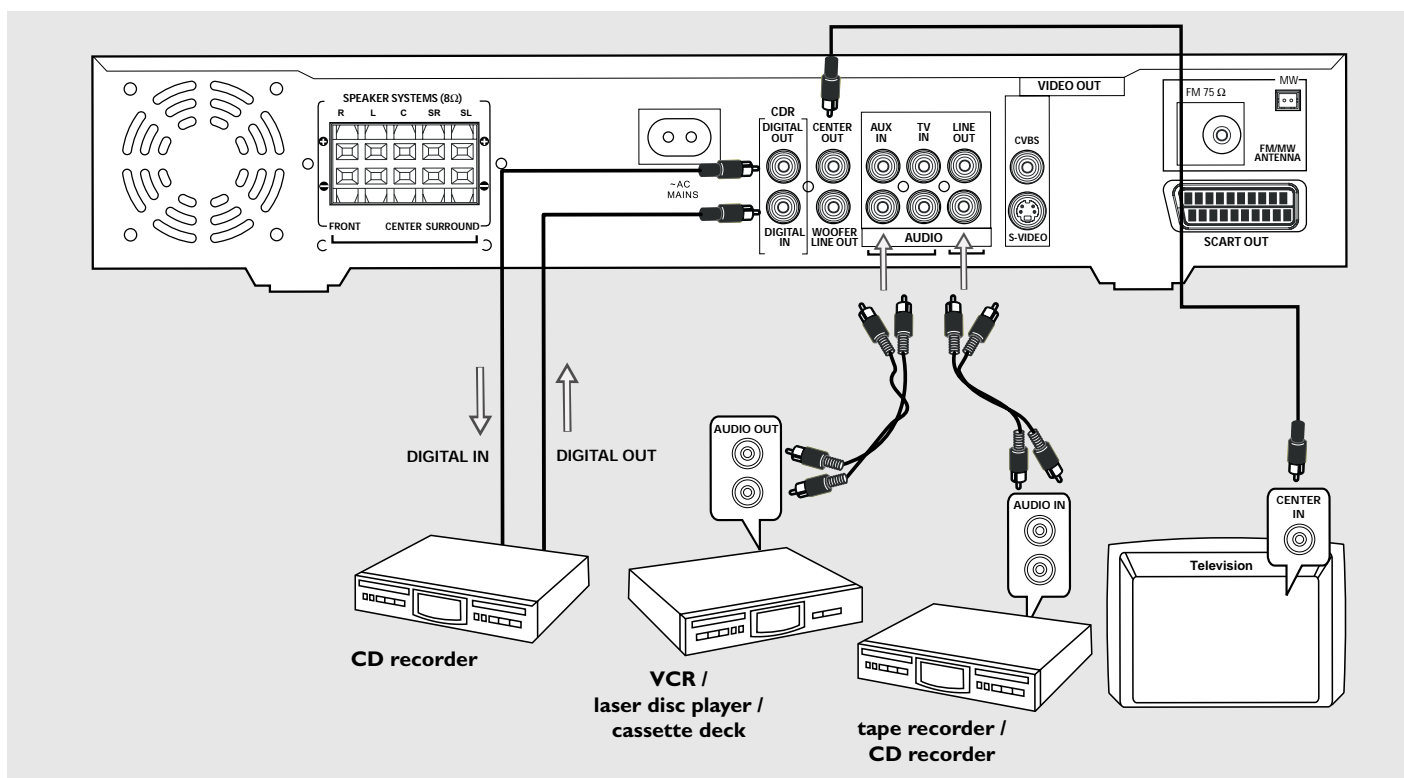
#### Note:

- If DVDs are encoded with anti-copy protection, digital recording is not possible.

## Replacing the centre speaker with the TV

You can remove the centre speaker and redirect the sound through your TV system if the TV has a CENTER IN jack. Connect the CENTER IN jack of your TV to the **CENTER OUT** jack of your DVD system.

**Caution: Do not touch the inner pins of the jacks on the rear panel. Electrostatic discharge may cause permanent damage to the unit.**



## Setting up the surround sound system

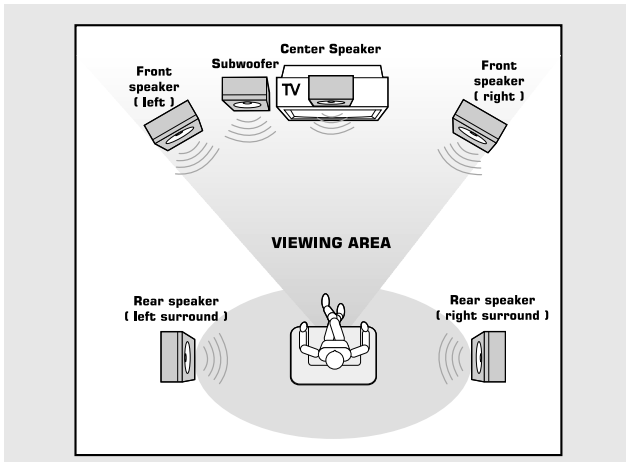
You must connect all the speakers and set up the system properly in order to enjoy the Digital Cinema experience at home (refer to "Connections - Connecting the speakers"). You will have the feeling of being in the middle of the action because sound is coming from everywhere around you. The subwoofer can enhance the bass performance of your system dramatically.

### IMPORTANT!

**Please sit at your usual listening position in order to set up the speaker balance correctly.**

### Placing the speakers

To obtain the best surround effect, place the speakers as follows.



- 1 Place the front left and right speakers at equal distances from the TV and at an angle of approximately 45 degrees from the listening position.
- 2 Place the centre speaker above or below the TV so the centre channel's sound is localised.
- 3 Place the surround speakers at normal listening ear level facing each other or mounted on the wall.
- 4 Place the subwoofer on the floor near the TV.

#### Notes:

- To avoid magnetic interference, do not position the front speakers too close to your TV.
- If the rear surround speakers are installed farther away from the listening position than the front and centre speakers, it will weaken the surround effect.
- All speakers should be securely installed to prevent accidents and improve sound quality.

## Changing the volume level

You can change the speakers' sound distribution to suit your surround sound needs, except for CDDA DTS disc.

- Press **CENTER** + / - to adjust the level of the centre speaker.  
→ "CEN xx" is displayed.
- Press **REAR** + / - to adjust the level of the rear surround speakers.  
→ "SL xx" or "SR xx" is displayed.

#### Notes:

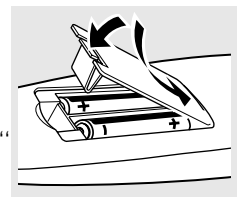
- "xx" denotes the volume level between -6 to +6.
- For CDDA DTS disc, please refer to "System Setup (DVD) - Setting the sound ( ) - Speakers" for changing the volume level of the centre speaker, rear speakers and subwoofer.

## Setting up the subwoofer

- 1 Use the supplied subwoofer cable to connect the subwoofer's audio input jack to the **WOOFER LINE OUT** jack of the DVD system.
- 2 Connect the subwoofer's AC power cable to the wall socket and switch on the power.  
→ It will automatically switch on when receiving an audio signal input. If there is no audio signal input, it will switch off automatically.
- 3 Set the phase polarity at the rear of the subwoofer at either **0°** or **180°** to determine better bass reproduction effect in your listening environment.
- 4 Press **SUBW** + / - to adjust the volume level of the subwoofer (-6 to +6).  
→ "SUB xx" is displayed.

## Inserting batteries into the remote control

- 1 Open the battery compartment.
- 2 Place the batteries in the compartment with the correct polarity as indicated by "+" and "-" symbols.
- 3 Close the cover.



### CAUTION!

- Remove batteries if they are exhausted or will not be used for a long time.
- Do not use old and new or different types of batteries in combination.
- Batteries contain chemical substances, so they should be disposed off properly.

## Switching on the system

- 1 After completing all the connections, connect the AC power cord of the DVD system and subwoofer to the power outlet.
- **The first time you turn on power,** "AUTO INSTALL - PRESS PLAY" may appear on the display screen. Press **▶||** on the system to start installation or press **■** to exit (refer to "Radio Reception - Plug and Play").
- 2 Press **SOURCE** button (or press **TV/AV, DISC, TUNER** or **AUX/DI**) to select the input source.  
→ The selected source will be displayed.
- For viewing a DVD or VCD, a TV needs to be connected (refer to "Connections - Connecting a TV"). Switch on the TV and set it to the correct video in channel (for example, EXT1, EXT2, AV1, AV2). Refer to your TV instruction manual for details.  
→ The default screen appears on the TV.
- You can connect other equipment to the DVD system in order to use the Home Cinema Audio System's surround sound capabilities. For example, connect to a TV and select TV/AV as the input source or connect to a VCR and select AUX as the input source.

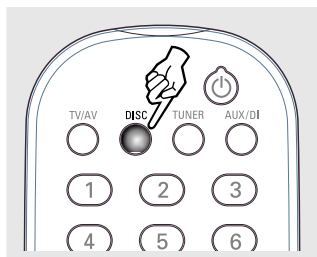
### IMPORTANT!

- If your TV screen is only showing a black/white picture or the picture is completely distorted, please refer to "NTSC/PAL setting" or "System Setup (DVD) - TV system".
- If you do not get a proper picture or sound, please refer to "System Setup (DVD)" in order to change the pre-settings as necessary to accommodate your TV system or change to your preferred settings.

## NTSC/PAL setting

Set the DVD system to NTSC or PAL, whichever matches your TV. The factory default setting is PAL. **This setting is necessary if you connected the DVD system to a NTSC TV only.**





- 1 Press **SOURCE** or **DISC** to select disc mode.  
→ Make sure that no disc is inside the disc tray.
- 2 Hold down **DISC** on the remote control until the current setting (NTSC or PAL) appear on the display.
- 3 If you want to change the setting, repeat **step 2**.



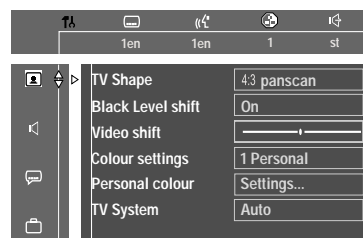
## System Setup (DVD)

The system setup is carried out via the TV, enabling you to customise the DVD system to suit your particular requirement. If the options selected are not available on a disc, then the disc's own preference will be used.

### To enter System Setup menu

- 1 Press **SYSTEM MENU** then **▼** to select  icon from the menu bar on the TV screen.  
→ Playback will stop.
- 2 Use **▲▼◀▶** to toggle through the functions (    ) and select your preferred option.
- 3 Press **OK** to confirm a highlighted selection.
- 4 To remove the menu, press **SYSTEM MENU** again.

### Setting the picture



#### → TV Shape

Select the aspect ratio of the connected TV.

#### If you have a normal TV and your DVD is formatted for wide screen viewing,

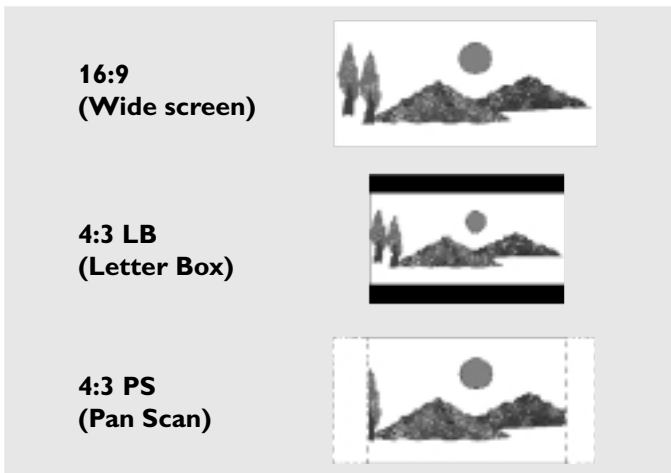
select **4:3 letter box**. Wide picture with black bands will be displayed on the upper and lower portions of the TV screen.

#### If you have a normal TV and your DVD is not formatted for wide screen viewing,

select **4:3 panscan** (default setting). A picture is displayed on the whole TV screen (or "reformatted to fit your TV").

#### If you have a wide screen TV,

select **16:9** (you must also set your wide screen TV to "full size").

**Note:**

– The format you select must be available on the disc. If it is not, the settings for TV Shape will not affect the picture during playback.

### ⇒ Black level shift (NTSC output only)

Select On if you set the DVD system to NTSC and you are playing NTSC-compatible DVDs. This will improve the colour contrast and picture.

### ⇒ Video shift

Use this setting to move the picture on your TV to the left or right. The default setting is in the centre.

### ⇒ Colour settings

You can select one of the predefined sets of colour settings: Personal, Rich, Natural, Soft or Animation.

### ⇒ Personal colour

It allows you to define your own set of colour settings by adjusting : Saturation, Brightness and Contrast. Use **▲▼** keys to adjust the values of these settings, then press **OK**.

### ⇒ TV System (NTSC/PAL conversion)

This setting is applicable only if you used the CVBS or SCART jacks to connect the DVD system to a TV. Select the colour system that matches the connected TV.

**You do not need to change the setting** if your TV is PAL-compatible. The factory default setting is PAL. It will change the video signal of a NTSC disc and playback in PAL format.

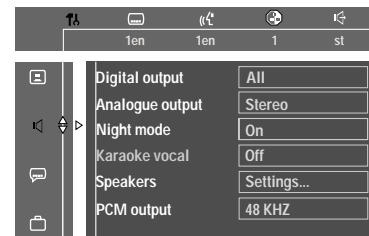
**If your TV is compatible with both NTSC and PAL**, select AUTO.

**If your TV is NTSC-compatible**, select NTSC. It will not support the PAL format DVDs and playback of a PAL DVD is not possible.

**Note:**

– Slight picture distortions may occur due to this conversion. This is normal.

### Setting the sound



### ⇒ Digital output

Digital output lets you specify the type of digital output available with the other equipment connected.

Select All, if you have connected the DVD system's DIGITAL OUT jack to an equipment that has a multichannel decoder.

Select PCM only (default setting), if the other equipment is not capable of decoding multichannel audio.

Select Off to deactivate the digital output.

**Note:**

– You cannot hear the SACD or MP3-CD playback if you use the digital connection.

### ⇒ Analogue output

Select Stereo, 3D sound (TruSurround) or Multi-channel to match your DVD home cinema system's playback capability.

**This function can also be accessed via the SURROUND button on the remote control.**



### ⇒ Night mode

Select **On** to level out the volume, high volume outputs will be softened. For example, the disc will play at the same sound level throughout the movie.

### ⇒ Karaoke vocal (not functional for this model)

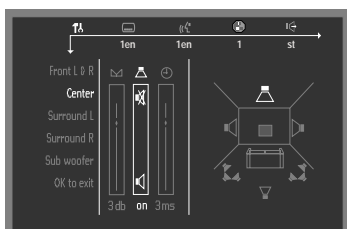
### ⇒ Speakers

Allows you to select speaker settings, volume balance, delay time and to test the speaker settings.

**You can also adjust the volume balance via the SUBW +/–, REAR +/–, CENTER +/– buttons on the remote control.**

Note:

– *Speaker settings are only active on the Multi-Channel Audio outputs for both DVD and SACD. Speaker settings will not be applied during playback in the SACD Stereo mode.*



### ⇒ PCM Output

If you connected the DVD system to an external equipment using the DIGITAL OUT jack, you may need to adjust the PCM output setting.

Select **96 KHZ** if the external equipment is capable of processing digital signal input with sampling rates of 96 kHz.

Select **48 KHZ** if the external equipment is incapable of processing 96 kHz digital signal input, and you need the system to convert sound to a standard signal with sampling rates of 48 kHz.

### Setting the language

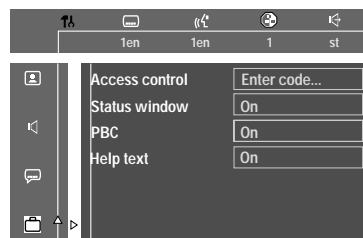


### ⇒ Audio Language, Subtitle, Menu

This is to select the audio language, subtitle language and the language used on TV screen menus or DVD menus that will always be used for every disc to be played back. The default setting is English.

If the language selected is not available on the disc, the original language designated by each disc will be selected.

### Setting the features



### ⇒ Access Control (see next page)

### ⇒ Status window

If you select **On**, the current status of the system will be displayed on the TV screen.



### ⇒ PBC (Playback Control -VCD only)

If you select **On**, when playing a video CD with playback control function, the PBC menu (if available) will appear on the TV screen for selection.

If you select **Off**, the video CD will play automatically once it is loaded in the disc tray.

**This function can also be accessed via the DISC MENU button on the remote control.**

### ⇒ Help text

If you select **On**, the help text will appear to describe the menu bar icons selected.

# Access Control

Access Control contains the following features :

- Child lock
- Parental level
- Change country
- Change code




## IMPORTANT!

- Philips denies any liability associated with unintended watching of discs. Make sure your discs play according to your Parental Controls settings before you allow children access to the player.
- Some DVDs are not encoded with a rating though the movie rating is printed on the disc jacket. The rating level feature does not work for such discs.


## Child lock (DVD/VCD)

Not all DVDs are rated or coded by the disc maker. You can prevent a specific DVD from playing by locking or unlocking the DVD, regardless of its rating.

### To lock/unlock the disc for viewing

- 1 Press **SYSTEM MENU**, then press ▼ four times to select  from the menu bar.
- 2 Press ► to select Access control.
- 3 Use the **numeric keypad (0-9)** to enter your **4-digit code**. If necessary, enter the code a second time.
- 4 Move to Child lock using ▲ ▼.
- 5 Press ► then use ▲ ▼ to select  (lock) or  (unlock).
- 6 Press **OK** to confirm.  
→ Now unauthorised discs will not be played unless the 4-digit code is entered.
- 7 To remove the menu, press **SYSTEM MENU** again.

### To enable disc playback after it has been locked

- 1 Insert the disc.  
→ The 'child safe' menu will appear.
- 2 You will be asked to enter your **4-digit code** for Play once or Play always.  
→ If you select Play once, the current disc in the disc tray can be played.  
→ If you select Play always, the disc will become authorised and can always be played, even if the Child Lock is set to  (lock).

### Notes:

- The player memory can maintain 120 authorised ('Child safe') disc titles. A disc will be placed in the list when 'Play Always' is selected.
- Each time a 'child safe' disc is played, it will be placed on top of the list. When the list is full, the last disc in the list will be replaced when a new disc is added.
- Two-sided DVDs and multi-volume VCDs may have a different ID for each side or volume. In order to make the disc 'Child safe', each side has to be authorised.



### To disable disc playback


- 1 Insert the disc.  
→ Playback starts automatically.
- 2 Press ■ while ☺ is visible.  
→ The ☹ will appear and the disc is now locked, and unable to play unless you enter the 4-digit code.

## Parental level (DVD)

(only available in region 1 player)

This feature lets you set a playback limitation level. Some DVDs may have a parental level assigned to the complete disc or to certain scenes on the disc. The rating levels are from 1 to 8 and are country dependent. You can prohibit the playing of certain discs that are not suitable for your children or have certain discs played with alternative scenes.

### To set the parental level at which you want to restrict playback

- 1 Press **SYSTEM MENU**, then press ▼ four times to select  from the menu bar.
- 2 Press ► to select Access control.
- 3 Enter the **4-digit code**. If necessary, enter the code a second time.
- 4 Move to Parental level using ▲ ▼.
- 5 Press ►, then press ▲ ▼ to select a rating from 1 to 8 for the DVD that is currently in the DVD player.
- 6 Press **OK** to confirm.
- 7 To remove the menu, press **SYSTEM MENU** again.

### Rating - NO PARENT

If parental control is not activated, it will play all discs.


### Rating - 1 to 8

If the player's parental level is set below 8, only discs with a lower or equal level will play. For example, if the player is set to 5, only discs with ratings of 5, 4, 3, 2 and 1 will be played. Higher rated scenes will not be played unless an alternative that has the same rating or lower is available on the disc. For example, consider a disc that generally is suitable for most audiences, and it is rated at level 2 for the most part. However, in the middle, there are also scenes rated at 5 (not suitable for children).


### Rating explanations

- 8 – Mature material; should be viewed only by adults due to graphic sexual material, violence, or language.
- 7 – No children under age 17; not recommended viewing for children under age 17.
- 6 – Parental Guidance - Restricted; recommended that parents restrict children under 17 from viewing or allow to view only when supervised by a parent or adult guardian.
- 5 – Reserved.
- 4 – Material is unsuitable for children under age 13.
- 3 – Parental Guidance suggested.
- 2 – Reserved.
- 1 – General Audience; recommended as acceptable for viewers of all ages.

## Change Country (DVD)

- 1 When disc playback is stopped, press **SYSTEM MENU**, then press ▼ four times to select  from the menu bar.
- 2 Press ► to select Access control.
- 3 Enter the **4-digit code**.
- 4 Move to Change country using ▲ ▼.
- 5 Press ►, then press ▲ ▼ to select a country.
- 6 Press **OK** to confirm.

## Change Code (DVD/VCD)

- 1 When disc playback is stopped, press **SYSTEM MENU**, then press ▼ four times to select  from the menu bar.
- 2 Press ► to select Access control.
- 3 Enter the **old 4-digit code**.
- 4 Move to Change code using ▲ ▼, then press ► to confirm.
- 5 Enter the **new 4-digit code**.
- 6 Enter the code a second time to reconfirm.

### If you forget your 4 digit code

- 1 Select Access control.
- 2 Press ■ **four times** when prompted for the 4-digit code. The system will automatically change back to the default code.
- 3 Enter a **new 4-digit code twice**.

## Sound Control

### IMPORTANT!

- For proper surround sound, make sure you have followed the “Connections” and “Preparations” procedures fully.
- The centre and surround speakers only operate when the system is set to surround sound mode and the source material being played is recorded or broadcast in Dolby Digital, DTS or Dolby surround sound.
- Stereo broadcasts or recordings will produce some surround channel effects when played in a surround mode. However, mono (single channel sound) sources will not produce any sound from the surround speakers.

### Selecting the surround sound mode

- Press **SURROUND** repeatedly to select : Multi-channel, 3D Sound or stereo mode.
  - The availability of the various surround sound modes depend on the number of speakers used and the sound available on the disc. The available output modes are shown below.
- When playing an **SACD**, press **SURROUND** to select: SACD multi channel or SACD stereo.

### Multichannel

#### – Dolby Digital

Dolby Digital (also known as Dolby 5.1) and MPEG Multichannel deliver a realistic and dynamic sound similar to theatre and cinema. It requires connection of all five speakers (front left/right, centre, surround left/right) and subwoofer for correct Dolby Digital sound reproduction. Each channel plays its own unique role in providing the right sound. Front left, centre and right join two surround speakers to reproduce high, mid and bass frequencies in five full-range channels of surround. Bass rumble, explosions and low frequency effects you feel are delivered through the subwoofer. A large number of DVD discs have been recorded in Dolby Digital.

#### – DTS Surround

DTS Surround is a cinema surround sound format that offers superior digital audio performance. DTS offers more clarity and definition especially for higher tones. The better sound quality is a result of the limited sound compression (3:1 instead of 11:1 for Dolby Digital) and the 20-bit resolution.

#### – Dolby Surround

The Dolby Surround system is a specially encoded two-channel analogue format that will produce sound through four speaker channels (front left, centre, front right, mono surround) when a Dolby Pro Logic Decoder is used. It is also compatible with stereo systems but the user will only have two-channel (front left & right) sound.

#### – Matrix

A new surround playback system that delivers five-channel surround sound (front left/right, centre, surround left/right and subwoofer).

### 3D Sound

A new surround playback system that delivers surround sound from only the two front speakers and a subwoofer.

### Stereo

All sound is reproduced and played through the front left and right speakers. This enables standard stereo reproduction.

### Selecting the digital sound effect

The digital sound effects allow you to select from various pre-set modes that control the frequency bands of sound to optimise certain musical styles. It greatly enhances the excitement and enjoyment of your favourite music.

- Press **SOUND** repeatedly to select the available sound effect.

#### When playing a DVD/VCD, select :

- CONCERT, DRAMA, ACTION or SCI-FI

#### When playing a CD/MP3-CD/SACD or in Tuner or Aux mode, select :

- CLASSIC, JAZZ, ROCK or DIGITAL

### Selecting the clear voice effect

The clear voice sound feature enhances the centre and surround sound speakers.

- Press **VOICE** on the remote control to switch on or off the clear voice effect.


## Volume control

Adjust **VOLUME** button (or press **VOL + / -**) to increase or decrease the volume level.

#### For Philips TVs only

- Press **TV VOL + / -** on the remote control to adjust the TV's volume level.

#### To listen through the headphones

- Connect the headphones plug to the  socket at the front of the system.
  - The speakers will be muted.

#### To switch off the volume temporarily

- Press **MUTE**.
  - Playback will continue without sound and "MUTE" is displayed.
- To restore the volume, press **MUTE** again.

## Dimming the display screen

- Press **DIM** repeatedly to select different levels of brightness for the display screen.

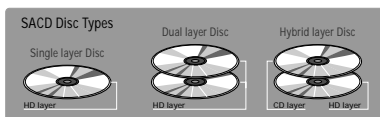
## Discs information



- DVD video discs may have one or more Titles, and each Title may have one or more Chapters.



- Video CDs may have one or more Tracks, and each Track may have one or more Indexes.
- To make easy and convenient access, you can move between Tracks and Indexes.
- Some Video CDs have Play Back Control (PBC), which is a predefined playback sequence stored on the disc (refer to "Special VCD/SVCD features").



- Super Audio CDs contain only Tracks.
- If SACD-text or CD-text is available on the disc, it will be displayed on both the TV screen and system's front panel.
- There are three types of Super Audio CDs : single-layer, dual-layer and hybrid discs.
  - The single layer disc may contain both information areas.
  - The dual layer disc may contain both information areas but a double amount of information can be stored on the disc thanks to the second layer.
  - The hybrid disc may contain not only both information areas but also a second, standard CD layer, making it playable on standard CD players.
- On hybrid discs (with SACD and CD layers), the system will only play the SACD layer.



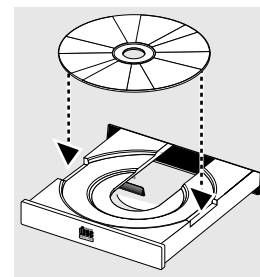
- Audio CDs contain only Tracks.

## Basic playback

### CAUTION!

- Do not move the disc player during playback, as doing so may damage the DVD system.
- Do not push on the disc tray or put any objects other than disc on the disc tray. Doing so may cause the disc player to malfunction.

- 1 Press **STANDBY ON / ECO POWER**  $\odot$  to switch the system on.
- 2 Press **OPEN/CLOSE** to open the disc tray.
- 3 Load a disc with the label side facing up.
- 4 Press **OPEN/CLOSE** again to close the tray.



- There will be a short delay while the system identifies the disc and reads the menu from the disc.
- Some discs will start playing automatically, and others will display the Disc Menu on the TV screen. If the menu is presented, use  $\blacktriangle$  $\blacktriangleright$  $\blacktriangleleft$  $\blacktriangle$  to highlight your selection and press **OK** to confirm. To select a play option, use the **numeric keypad (0-9)**.
- 5 Press  $\blacktriangleright$ **II** to start playback.
- For SACDs, VCDs and CDs, playback will stop at the end of the disc.

### Notes:

- Your system will not play discs that have a region code different from the region code of your system.
- If the inhibit icon ( $\otimes$ ) appears on the TV screen when a button is pressed, it means the function is not available on the disc you are playing.

### To interrupt playback

- 1 Press  $\blacktriangleright$ **II**.
  - The picture freezes and the sound will be muted.
- 2 To resume playback, press  $\blacktriangleright$ **II** again.

### To stop playback

- Press  $\blacksquare$ .

## Continue playback from the last stop point (DVD/VCD)

- Press **RESUME** to resume playback from the point at which it stopped (**it is only applicable for the last five DVD/VCD played**).

## To cancel the resume mode and start playback from the beginning

- 1 In stop mode, press ■.
- 2 Press ►|| to start playback from the beginning.

### Note:

- Resume feature is also applicable to VCDs and SVCDs.
- The resume option may not be available on some discs.

## Skipping to another track/chapter

- Press |◀◀ or ▶▶| repeatedly during playback to skip backward or forward. Each press will take the disc to the beginning of the previous or next track/chapter.

### Note:

- If the REPEAT function has been set, pressing |◀◀ or ▶▶| will replay the same track/chapter.

## To skip to the beginning of the current track/chapter during playback

- Press |◀◀ once.

## To go directly to any track/chapter

- Use the **numeric keypad (0-9)** to enter the number of the desired track/chapter.

## Fast Search

- 1 Hold down |◀◀ or ▶▶| about **two seconds** to fast reverse or forward the disc. Holding |◀◀ or ▶▶| again will increase the search speed.
- 2 To resume normal play, press ►||.

## Repeat play

You can only select the repeat play mode during playback.

### For DVD - Repeat chapter/title/disc

- Press **REPEAT** repeatedly to select the following :
  - "REPEAT CHAPTER" – repeat the current chapter.
  - "REPEAT TITLE" – repeat the current title.
  - "REPEAT DISC" – repeat the entire disc.

### For SVCD/VCD/SACD/CD - Repeat track/disc

- Press **REPEAT** repeatedly to select the following :
  - "REPEAT TRACK" – repeat the current track.
  - "REPEAT DISC" – repeat the entire disc.

### To cancel the repeat mode

- Press **REPEAT** repeatedly to select "REPEAT OFF".

### Notes:

- Repeat play might not work correctly with some DVDs.
- For VCD, repeat play is not possible during PBC playback.

## Repeat A-B

You can play a specific section in a chapter/track repeatedly.


- 1 Press ►|| to start disc playback.
- 2 When the disc reaches the point at which you want repeated playback to begin, press **REPEAT A-B**.
- 3 When the disc reaches the point at which you want to end the segment, press **REPEAT A-B** again.
  - The segment will now repeat continuously.
- 4 To resume normal play, press **REPEAT A-B** again.

## Programme favourite tracks (Audio CD)

You can play the contents of the disc in the order you want by programming the order of the tracks to be played. Up to 20 tracks can be stored.

- 1 While playback is stopped, press **PROG** to enter programme mode.
  - "%? PROGRAM" is displayed.
- 2 Use |◀◀/ ▶▶| or the **numeric keypad (0-9)** to enter the track number you want.
  - If you attempt to programme more than 20 tracks, "PROGRAM FULL" is displayed.
- 3 Press **OK** or **PROG** to store the track.
  - Repeat **steps 2-3** to store other tracks.
- 4 To start programme play, press ►||.
- 5 To stop playback or exit programme mode, press ■ **once**.
- 6 To cancel the programme, press ■ again.

## Special DVD/VCD features

A number of operations can be carried out directly via the multiple menu bars on the TV screen without interrupting disc playback (except for Setup Menu (  ), see "System Setup (DVD)").

### Access to the menu bar

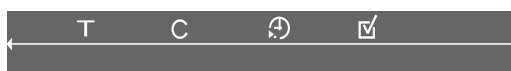
- 1 Press **SYSTEM MENU**.  
→ The menu bar will be displayed across the top of the TV screen.



From the left,  
User Preference Settings → Subtitle Language →  
Audio Language → Smart Colour → Sound mode



From the left,  
Frame by Frame → Slow Motion → Scan Speeds  
→ Camera Angle → Enlarge Picture



From the left,  
Title → Chapter → Time Search  
→ Favourite Track Selection


- 2 Use ◀ ▶ to move through the menu bar.
- 3 Use ◀▶ ▲▼ to select your preferred option and press **OK** to confirm.
- 4 To remove the menu, press **SYSTEM MENU** again.

### IMPORTANT!

– Some operations may be different or restricted, depending on the disc format. Refer to the jacket or case of the disc you are playing.  
– Changing the Subtitle Language, Audio Language, Smart Colour and Sound mode from the menu bar are only applied to the current disc, it will not change the default preset at User Preference Settings.


## Changing subtitle language (DVD)

This operation works only on DVDs with multiple subtitle languages.

- Move to  in the menu bar and use ▲▼ to select the desired language.

## Changing audio language

This operation works only on DVDs with multiple audio language.

- Move to  in the menu bar and use ▲▼ to select the desired languages.


### For VCD :

- Press ▲▼ to select the desired audio channels for sound :  
LEFT VOCAL → RIGHT VOCAL → STEREO  
→ LEFT VOCAL


### Note:

– When the desired language is not selected even after pressing the button several times, it means the language is not available on the disc.


## Changing speaker surround output

- Move to  in the menu bar and use ▲▼ to select the surround output to match your system's playback capability: Multichannel, 3D Sound or Stereo.

## Advancing by frames

- 1 Move to  in the menu bar and press ▼.  
→ Playback will pause.
- 2 Use ◀ ▶ to select the previous or next picture frame.
- 3 To resume normal play, press ▶||.



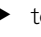

## Playing in slow motion

- 1 Move to  in the menu bar and press ▼.
- 2 Use ◀ ▶ to select the required slow motion speed.  
(◀ = reverse)    -1, -1/2, -1/4, -1/8  
(▶ = forward)    +1/8, +1/4, +1/2, +1
- 3 To resume normal play, press ▶||.

### Note:

– The sound will be muted during slow-motion play.

## Searching for a particular passage


- 1 Move to  in the menu bar and press ▼.
- 2 Use   to select the required search speed.  
 (◀ = reverse)     -32, -8, -4  
 (▶ = forward)     +4, +8, +32
- 3 To resume normal play, press .

### Note:

– The sound will be muted during certain fast reverse or forward search speeds.

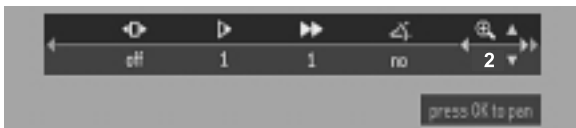
## Viewing from another angle (DVD)


Some DVDs include scenes recorded from different camera angles. The selections of angle depend on the disc format. Check the DVD disc case or disc menu for details and availability.

- Move to  in the menu bar and use ▲▼ to select the desired angle.  
 → Playback changes to the selected angle.




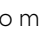
## Zooming in

This function allows you to enlarge the picture on the TV screen and to pan through the enlarged image.



- 1 Move to  in the menu bar.
- 2 Use ▲▼ to activate the ZOOM function and select the required zoom factor: 1.33 or 2 or 4.

### To shift the enlarged picture on the TV screen

- 3 Press **OK** to confirm the selection.  
 → The panning icon appears on the screen.
- 4 Use     to move the zoomed picture left, right, up and down.
- 5 When **OK** is pressed, the picture will remain panned.
- 6 To exit ZOOM mode, set the zoom factor to "Off" (zoom factor 1) in the menu bar.

## Moving to another title/chapter

Some discs may contain more than one title or chapter. If the disc has a title or chapter menu recorded on it, you can start playback from the selected item.

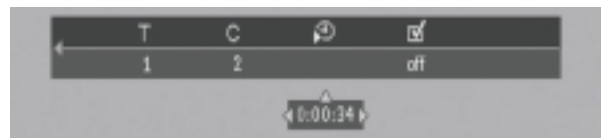
- 1 Select **T** (title) or **C** (chapter) from the menu bar.
- 2 Use ▲▼ to select a desired title/chapter number.  
 → Playback will start automatically.


### Note:

– Selecting a title or chapter might not be possible on certain discs.

## Playback from a selected point

This function allows you to start playing at any chosen time on the disc.



- 1 Move to  in the menu bar and press ▼.  
 → Playback will pause.  
 → A time edit box appears on the screen, showing the elapsed playing time of the current disc.
- 2 Enter hours, minutes, and seconds from left to right in the time edit box using the **numeric keypad (0-9)**.  
 → Each time an item has been entered, the next item will be highlighted.
- 3 Press **OK** to start playback from the selected time on the disc.

### Note:


– This option may not be available on certain discs.

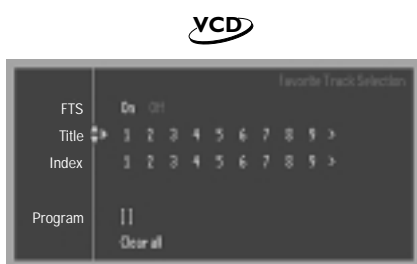


## Favourite Track Selection - FTS

- The FTS function allows you to store your favourite titles and chapters (DVD) and favourite tracks and indexes (VCD) for a particular disc in the system memory.
- FTS programme can contain up to 20 items (titles, chapters etc.).
- A programmed FTS will be placed on top of the list when playback is activated. When the list is full, a new programme will replace the last programme on the list.
- The programme can be selected and played at any time.

### To set up an FTS programme, access the FTS menu

- 1 Press **SYSTEM MENU**.
- 2 Move to  in the menu bar and press **▼**.  
→ The FTS menu appears.
- 3 To remove the menu, press **SYSTEM MENU** again.



### The following functions can be performed in the FTS menu:

#### To store titles/tracks

- 1 Press **▼** to select Title.
  - 2 Use **◀▶** to select the required title number and press **OK** to store.  
→ The title number will be added to the list of the programme.
- If you wish to store the entire Title, press **OK**.

#### To store chapters/indexes

- 1 At Title, use **◀▶** to move to a desired title number, then press **▼**.  
→ The title number will be marked and the highlight moves to the first available chapter number of this title.
- 2 Use **◀▶** to select the required chapter number, then press **OK** to store.  
→ The title/chapter selection will be added to the list of the programme.

#### To activate/deactivate the FTS programme

- Move to FTS and use **◀▶** to select On or Off.  
**OR**
- Press **PROG** on the system to toggle between On and Off.

#### To erase an FTS Programme

- 1 Press **▼** to select Program.
- 2 Use **◀▶** to select the required number and press **OK** to erase.

#### To erase the entire FTS programme

- 1 Press **▼** to select Clear all.
- 2 Press **OK** to erase.

## Checking the contents of a DVD

- 1 Press **DISC MENU** on the remote control.  
→ If the current title has a menu, the menu will appear on the screen. Otherwise, the disc menu will be displayed.
  - 2 Use **◀▶▲▼** to select the desired title or chapter, then press **▶||** or **OK**.  
→ The selected title or chapter starts playing.
- To remove the menu, press **DISC MENU** again.

#### Notes:

- The details of operation might differ depending on the DVD.
- Selecting a title or disc might not be possible on certain DVDs.

## Special VCD/SVCD features

### Playback Control (PBC)

PBC playback allows you to play Video CDs interactively, following the menu on the display.

#### To set PBC on/off

- While playback is stopped, press **DISC MENU** to toggle between "PBC ON" and "PBC OFF".

#### When playing a disc with PBC,

##### If PBC is set to Off

- Once the disc is loaded in the disc tray, it will start playback automatically.

##### If PBC is set to On

- Once the disc is loaded in the disc tray, the PBC menu (if available) will appear on the TV screen for selection.
- Pressing **DISC MENU** during playback will return to the PBC menu.

#### Note:

– If PBC is on, *TIME SEARCH* and *REPEAT* functions are not available.

## Special SACD, MP3 and CD features

### Text information

- Some CD, SACD, or MP3-CD may contain text information (e.g. track name, album name, artist name, etc.) which will appear on the TV screen during playback.

CD	track	time	total tracks	total time
▶	11	2:34	14	5:29:19
Disc	The Best of the			
Artist	Bryan Adams			
Track	Everything I do			

## Special MP3-CD features

### Supported MP3-CD format

- ISO 9660 format.
- Maximum 30 characters.
- Maximum nested directory is 8 levels.
- Maximum album number is 32.
- Supported VBR bit-rate.
- Supported sampling frequencies for MP3 discs are : 32 kHz, 44.1 kHz, 48 kHz.
- Supported bit-rates of MP3 discs are: 96, 112, 128, 256 (kbps).

Downloading MP3 files from the Internet or copying songs from your own legal discs is a delicate process.

Sound Quality	Bit Rate	Approximate Reduction Ratio	Approximate total MP3-CD time	Comment
AM radio	32 kbps	40 : 1	40 hrs	Sound quality significantly affected - not recommended.
FM radio	64 kbps	20 : 1	20 hrs	
<b>Near-CD</b>	<b>96 kbps</b>	<b>15 : 1</b>	<b>15 hrs</b>	<b>Balanced sound quality - compression rate</b>
<b>CD-like</b>	<b>128 kbps</b>	<b>10 : 1</b>	<b>10 hrs</b>	
CD*	256 kbps	5 : 1	5 hrs	Compression rate low - suggest to play CDs instead
CD*	320 kbps	3 : 1	3 hrs	

It is normal to experience an occasional "skip" while listening to your MP3 discs.

### Additional note for MP3 disc Playback

- In compliance with the SDMI, digital-out is muted while playing MP3 discs.
- Due to the recording nature of Digital Audio MP3 (DAM), only digital audio music will play.
- The disc reading time may exceed 10 seconds due to the large number of songs compiled onto one disc.
- For multi-session discs with different formats, only the first session will be available.

### Selecting a desired album/track

- 1 Hold down **◀◀ / ▶▶** to select a desired album.
  - 2 Press **◀◀ / ▶▶** briefly and repeatedly to select a desired track.
- You can also use the **numeric keypad (0-9)** to enter your choice.
    - During playback, numbers are used for track selection.
    - While playback is stopped, numbers are used for Album selection.

MP3	Album	Track	Time
▶	4	--/--	---:--

- Only the following functions are possible for MP3 discs:
  - STOP / PLAY / PAUSE
  - SKIP NEXT / PREVIOUS
  - REPEAT (TRACK / ALBUM / DISC)

### Repeat play

- Press **REPEAT** repeatedly to select the following :
  - "REPEAT TRACK" – repeat the current track.
  - "REPEAT ALBUM" – repeat the current album.
  - "REPEAT DISC" – repeat the entire disc.

### To cancel the repeat mode

- Press **REPEAT** repeatedly to select "REPEAT OFF".

## Plug and Play

Plug and Play allows you to store all available RDS stations and radio stations automatically.

### First time setup/power up

- 1 When you turn on the power, "AUTO INSTALL - PRESS PLAY" is displayed.
  - 2 Press ►|| on the system to start installation.
    - "INSTALL TUNER" is displayed, followed by "AUTO PROGRAM".
    - The system will automatically store the radio stations with sufficient signal strength, starting from FM band and followed by MW band. Weak radio stations may be stored in later presets.
    - When all the available radio stations are stored or the memory for 40 presets are used, the last preset radio station (or the first available RDS station) will be played.
  - 3 **If the first preset is an RDS station**, the system will proceed to set the RDS clock.
    - "INSTALL TIME" is displayed, followed by "SEARCH RDS TIME".
    - When RDS time is read, "RDS TIME" is displayed and the current time will be stored.
    - If RDS station does not transmit RDS time within 90 seconds, the programme will exit automatically and the display will show "NO RDS TIME".
- If the first preset is non-RDS station;
    - The programme will exit automatically.

### To reinstall the Plug and Play

- 1 **In standby mode**, hold down ►|| on the system until "AUTO INSTALL - PRESS PLAY" is displayed.
- 2 Press ►|| again to start installation.
  - All previously stored radio stations will be replaced.

### To exit the Plug and Play

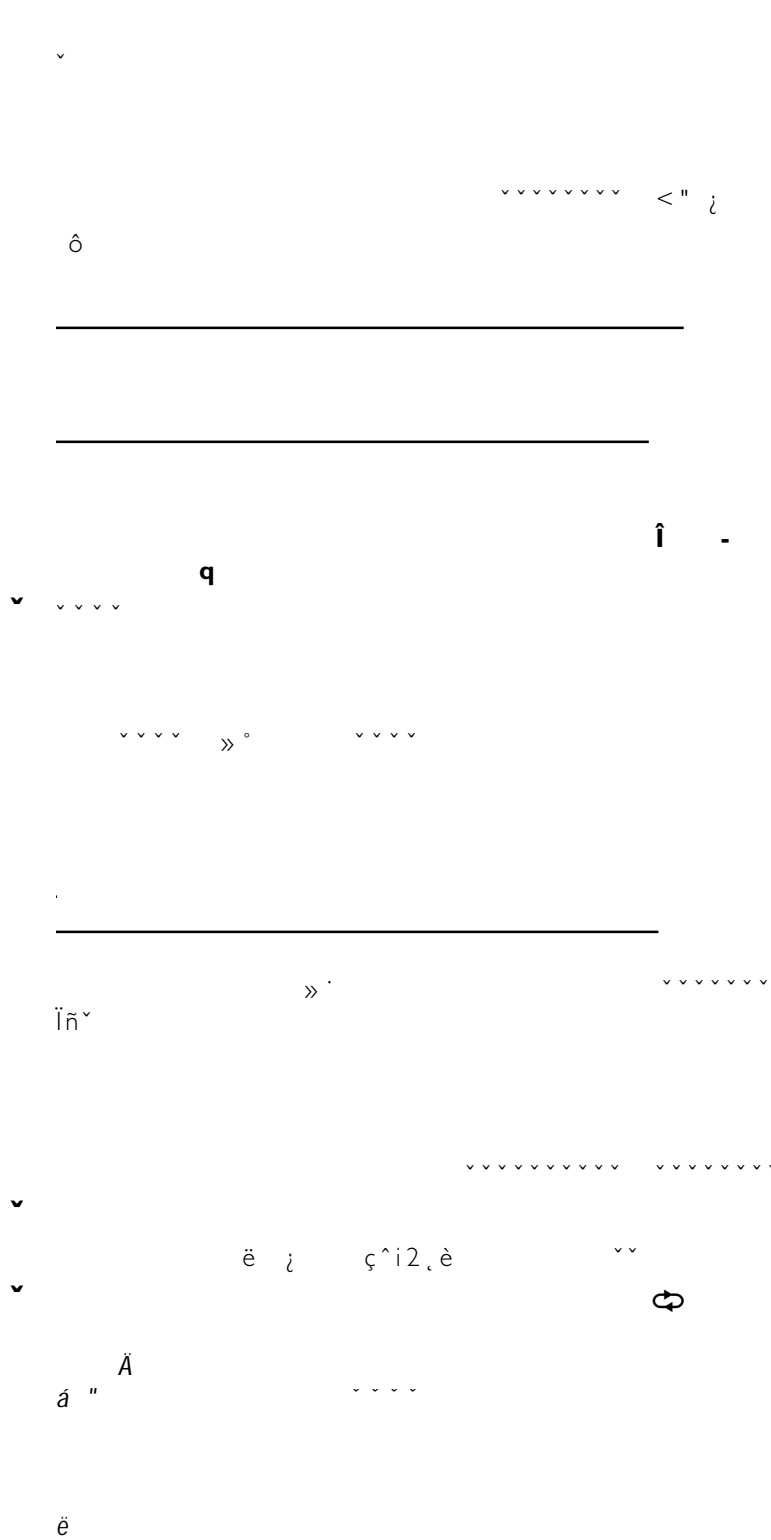
- Press ■ on the system.
  - If you do not complete the Plug and Play installation, the function will be restarted when you turn on the power again.

#### Notes:

- If no stereo frequency is detected during Plug and Play, "CHECK ANTENNA" will be displayed.
- During Plug and Play, if no button is pressed within 15 seconds, the system will exit Plug and Play mode.

## Tuning to radio stations

- 1 Press **SOURCE** to select TUNER mode (or **TUNER** on the remote control).
- 2 Press **TUNER** again to select the desired band : FM or MW



www

»° preset numbers of all other preset radio stations in the band with higher numbers also decrease by one.

- Repeat **steps 1–2** to erase other preset radio stations.

## IMPORTANT!

**When in Eco Power standby mode, it is not possible to show the clock time or set the clock/timer function.**

## Clock setting

The clock can be set in either 12-hour or 24-hour mode ("12:00 AM" or "00:00", for example).

- 1** In standby mode, press **CLOCK•TIMER** once.
- While in the active source mode (DISC or TUNER, for example), press **CLOCK•TIMER** twice.
- 2** Press **PROG** repeatedly to select clock mode.  
→ "12:00 AM" or "00:00" starts flashing.
- 3** Press **◀◀** or **▶▶** to set the hours and minutes. To increase the speed, hold down **◀◀** or **▶▶**.
- 4** Press **CLOCK•TIMER** again to store the setting.  
→ The clock starts working.

### To exit without storing the setting

- Press **■** on the system.

### To view the clock time in other source mode

- Press **CLOCK•TIMER**.  
→ The clock is displayed for a few seconds.  
→ If the clock has not been set, "----:----" is displayed.

### Notes:



- The clock setting will be cancelled when the power cord is disconnected or if a power failure occurs.
- During clock setting, if no button is pressed within 90 seconds, the system will exit clock setting mode automatically.

## Timer setting

The system can switch on to DISC or TUNER mode automatically at a preset time, serving as an alarm to wake you up.

### IMPORTANT!

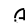
- Before setting the timer, ensure that the clock is set correctly.
- The timer will always be switched on after it has been set.
- The volume of the timer will increase gradually to minimum level 12 or the last tuned volume level.

- 1 Hold down **CLOCK•TIMER** for more than **two seconds** to enter timer mode.
    - The clock timer and  starts flashing.
  - 2 Press **SOURCE** repeatedly (or **DISC** or **TUNER** on the remote control) to select the sound source.
    - "DISC xx:xx" indicates the disc mode is selected.
    - "TUNER xx:xx" indicates the Tuner mode is selected.
  - 3 Press **◀◀** or **▶▶** to set the hours and minutes. To increase the speed, hold down **◀◀** or **▶▶**.
  - 4 Press **CLOCK•TIMER** to store the timer:
    - The set timer "xx:xx" and the selected source are displayed.
    -  remains on the display.
- At the preset time, the selected sound source will play.
    - If DISC source is selected, the timer will wake up by playing the first track of the disc or programmed track. If the disc tray is empty, it will switch to Tuner mode.
    - If Tuner source is selected, the timer will wake up by playing the last tuned radio station.

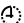
### Note:

- During timer setting, if no button is pressed within 90 seconds, the system will exit timer setting mode automatically.

## Deactivating the timer

- 1 Hold down **CLOCK•TIMER** for more than **two seconds** to enter timer mode.
- 2 In timer mode, press **■** on the system to cancel the timer.
  -  disappears from the display and "TIMER OFF" is displayed.

## Activating the timer to the last preset time and source

- 1 Hold down **CLOCK•TIMER** for more than **two seconds** to enter timer mode.
- 2 Press **CLOCK•TIMER** again to store the timer setting.
  - The last set timer information is displayed for a few seconds and  is shown.

## Sleep timer setting

The sleep timer enables the system to switch to standby mode automatically at a preset time.

- 1 Press **SLEEP** on the remote control repeatedly to select a preset amount of time after which the system will shut itself off automatically.
  - The selections are as follows (time in minutes):  
15 → 30 → 45 → 60 → 90 → 120 → OFF → 15 ...
  - "SLEEP xx" or "SLEEP OFF" is displayed. "xx" is the time in minutes.
- 2 When you reach the desired length of time, stop pressing the **SLEEP** button.
  - The sleep timer is now set. Before the system switches to standby mode, a countdown of 10 seconds is displayed.  
"SLEEP 10" → "SLEEP 9"... → "SLEEP 1"  
→ "SLEEP"

## To check the remaining length of time after sleep timer is activated

- Press **SLEEP** once.

## To change the preset sleep timer

- Press **SLEEP** again while the remaining sleep timer is shown.
  - The display will show the sleep timer options.

## To deactivate the sleep timer

- Press **SLEEP** repeatedly until "SLEEP OFF" is displayed, or press the **STANDBY ON** button.

# Specifications

## AMPLIFIER SECTION

Output power	
LX8000SA	5 x 35 W RMS
LX7000SA	5 x 30 W RMS
Total Harmonic Distortion	10% at rated power (1 kHz)
Frequency Response	100 Hz – 30 kHz / ±3 dB
Signal-to-Noise Ratio	> 65 dB (CCIR)
Input Sensitivity	
- Aux In	880 mV
- Digital In	IEC 60958

## TUNER SECTION

Tuning Range	FM 87.5 – 108 MHz (50 kHz steps)
	MW 531 – 1602 kHz (9 kHz steps)
26 dB Quieting Sensitivity	FM 20 dB
26 dB Quieting Sensitivity	MW 3162 µV/m
Image Rejection Ratio	FM 25 dB
	MW 28 dB
IF Rejection Ratio	FM 60 dB
	MW 24 dB
Signal-to-Noise Ratio	FM 60 dB
	MW 40 dB
MW Suppression Ratio	FM 30 dB
Harmonic Distortion	FM Mono 3%
	FM Stereo 3%
	MW 5%
Frequency Response	FM 18 Hz – 10 kHz / ±6 dB
Stereo Separation	FM 26 dB (1 kHz)
Stereo Threshold	FM 23.5 dB

## DVD SECTION

Laser Type	Semiconductor
Disc Diameter	12cm / 8cm
Video Decoding	MPEG-2
Video DAC	10 Bits
Signal System	PAL / NTSC
Video Format	4:3 / 16:9
Video S/N	56 dB (minimum)
Composite Video Output	1.0 Vp-p, 75 Ω
S-Video Output	Y - 1.0 Vp-p, 75 Ω
	C - 0.286 Vp-p, 75 Ω
SCART Video Output	R/G/B - 0.7 Vp-p, 75 Ω
Audio DAC	24 Bits / 96 kHz
Frequency Response	4 Hz – 20 kHz (44.1 kHz)
	4 Hz – 22 kHz (48 kHz)
	4 Hz – 44 kHz (96 kHz)
Digital Output	SPDIF Coaxial
SACD D/A converter	DSD
SACD cut-off frequency	30 kHz

## MISCELLANEOUS

Power Supply Rating	220 – 240 V / 50 Hz
Power Consumption	160 W
Eco Power Standby	< 0.5 W
Dimensions (w x h x d)	390 mm x 73 mm x 360 mm
Weight	
LX8000SA	5.8 kg
LX7000SA	5.6 kg

## IR REMOTE CONTROL

Effective Range	> 8 Meter
Number of Keys	45
Battery (1.5V)	AA x 2

## SPEAKERS (LX8000SA)

### Front speakers / Rear (surround) speakers

System (front)	2-way shielded
System (surround)	2-way unshielded
Impedance	6 Ω
Speaker drivers	3" woofer, 2" x 3" ribbon tweeter
Dimensions (w x h x d)	89 mm x 270 mm x 41 mm
Weight	0.4 kg/each

### Centre speaker

System	2-way shielded
Impedance	6 Ω
Speaker drivers	2 x 3" woofer, 2" x 3" ribbon tweeter
Dimensions (w x h x d)	286 mm x 95 mm x 67 mm
Weight	0.9 kg

## SUBWOOFER (LX8000SA)

Subwoofer (not magnetically shielded design)	6.5" with wOOx technology
Output power	100 W (4 Ω, DIN)
THD	10% at 100 Hz
Reproduction frequency response	30 Hz – 150 Hz
Phase switch	0°, 180°
Input sensitivity (Subwoofer In)	200 mVrms
AC power	220 – 240 V / 50 Hz
Power Consumption	53 W (at 1/8 Rated Power)
Dimensions (w x h x d)	195 mm x 462 mm x 263 mm
Weight	8.9 kg

## SPEAKERS (LX7000SA)

### Front speakers / Rear (surround) speakers

System (front)	2-way shielded
System (surround)	2-way unshielded
Impedance	6 Ω
Speaker drivers	3" full range, 1" piezo
Dimensions (w x h x d)	89 mm x 161 mm x 68 mm
Weight	0.4 kg/each

### Centre speaker

System	2-way shielded
Impedance	6 Ω
Speaker drivers	3" full range, 1" piezo
Dimensions (w x h x d)	234 mm x 96 mm x 73 mm
Weight	0.9 kg

## SUBWOOFER (LX7000SA)

Subwoofer (not magnetically shielded design)	6.5"
Output power	50 W (4 Ω, DIN)
THD	10% at 100 Hz
Reproduction frequency response	30 Hz – 150 Hz
Phase switch	0°, 180°
Input sensitivity (Subwoofer In)	200 mVrms
AC power	220 – 240 V / 50 Hz
Power Consumption	53 W (at 1/8 Rated Power)
Dimensions (w x h x d)	143 mm x 338 mm x 377 mm
Weight	7.4 kg

Specifications subject to change without prior notice

## WARNING!

Under no circumstances should you try to repair the system yourself, as this will invalidate the warranty. Do not open the system as there is a risk of electric shock.

If a fault occurs, first check the points listed below before taking the system for repair. If you are unable to solve a problem by following these hints, consult Philips service centre.

Problem	Solution
<b>No power.</b>	<ul style="list-style-type: none"> <li>– Check if the AC power cord is properly connected.</li> </ul>
<b>No picture.</b>	<ul style="list-style-type: none"> <li>– Select the appropriate video input channel on the TV.</li> <li>– Check if the TV is switched on.</li> <li>– Check the video connection.</li> </ul>
<b>Distorted or poor picture.</b>	<ul style="list-style-type: none"> <li>– Sometimes a small amount of picture distortion may appear. This is not a malfunction.</li> <li>– Clean the disc.</li> </ul>
<b>Completely distorted picture or black/white picture.</b>	<ul style="list-style-type: none"> <li>– Make sure the NTSC/PAL setting at the DVD system matches the video signal of your television (see "System Setup (DVD) - Setting the pictures - TV system").</li> </ul>
<b>The aspect ratio of the screen cannot be changed even though you have set the TV shape</b>	<ul style="list-style-type: none"> <li>– The disc can play only in the aspect ratio in which it was recorded.</li> <li>– Depending on the TV, it may not allow you to change the aspect ratio.</li> </ul>
<b>No sound or distorted sound.</b>	<ul style="list-style-type: none"> <li>– Adjust the volume.</li> <li>– Check that the speakers are connected correctly.</li> <li>– Replace the speaker cables.</li> <li>– Check the speaker settings.</li> <li>– If the system is in pause, slow motion or fast forward/reverse, press PLAY to resume normal playback.</li> </ul>
<b>No sound is heard from the centre or rear speakers.</b>	<ul style="list-style-type: none"> <li>– Use the CENTER + / - or REAR + / - to adjust the volume level.</li> <li>– Check that the centre or rear surround speakers are connected correctly.</li> <li>– Use surround mode.</li> </ul>
<b>The DVD system does not start playback.</b>	<ul style="list-style-type: none"> <li>– Insert a readable disc with the playback side facing down.</li> <li>– Check the disc type, colour system (NTSC or PAL) and regional code. Check for any scratches or smudges on the disc.</li> <li>– Press SYSTEM MENU to turn off the setup menu screen.</li> <li>– Cancel the parental control rating function or change the rating level.</li> <li>– Moisture has condensed inside the system. Remove the disc and leave the system turned on for about an hour.</li> </ul>
<b>The DVD system does not respond when buttons are pressed.</b>	<ul style="list-style-type: none"> <li>– Disconnect the power plug from the outlet and insert again.</li> </ul>
<b>The language for the sound or subtitle cannot be changed when playing a DVD.</b>	<ul style="list-style-type: none"> <li>– Multi-language sound or subtitle is not recorded on the DVD.</li> <li>– Changing the language for the sound or subtitle is prohibited on the DVD.</li> </ul>
<b>No image is visible when a function is selected.</b>	<ul style="list-style-type: none"> <li>– Make sure the other equipment is connected correctly.</li> <li>– Press the correct function button for the input source (TV/AV or AUX/DI, etc.).</li> </ul>
<b>Considerable noise in radio broadcasts.</b>	<ul style="list-style-type: none"> <li>– Tune in the correct frequency.</li> <li>– Connect the antenna.</li> <li>– Route all connection cables away from the antenna jacks and the antennas.</li> <li>– Fully extend the FM wire antenna. Position it for the best reception and secure it to a wall.</li> <li>– Connect an outdoor FM or MW antenna.</li> <li>– Adjust the direction and position for best reception.</li> <li>– Turn off the equipment causing the noise or move it away from the DVD system.</li> <li>– Place the antenna farther away from the equipment causing the noise.</li> </ul>
<b>The remote control does not function.</b>	<ul style="list-style-type: none"> <li>– Point the remote control at the remote sensor of the unit.</li> <li>– Reduce the distance to the system.</li> <li>– Remove any possible obstacles.</li> <li>– Replace the batteries with new ones.</li> <li>– Check that the batteries are loaded correctly.</li> </ul>
<b>The display is dark.</b>	<ul style="list-style-type: none"> <li>– Press DIM again.</li> </ul>
<b>Low hum or buzz sound.</b>	<ul style="list-style-type: none"> <li>– Place the DVD system as far as possible from electric devices with interference.</li> </ul>
<b>Low bass response.</b>	<ul style="list-style-type: none"> <li>– Check all speakers connections. Make sure you connected positive wires to + jacks and negative wires to - jacks.</li> </ul>
<b>The disc tray cannot open and "TRAY LOCKED" is displayed.</b>	<ul style="list-style-type: none"> <li>– Hold down PROG button on the system until "TRAY UNLOCK?" appears on the display, then hold down PLAY/PAUSE button on the system.</li> </ul>

## Free Manuals Download Website

<http://myh66.com>

<http://usermanuals.us>

<http://www.somanuals.com>

<http://www.4manuals.cc>

<http://www.manual-lib.com>

<http://www.404manual.com>

<http://www.luxmanual.com>

<http://aubethermostatmanual.com>

Golf course search by state

<http://golfingnear.com>

Email search by domain

<http://emailbydomain.com>

Auto manuals search

<http://auto.somanuals.com>

TV manuals search

<http://tv.somanuals.com>