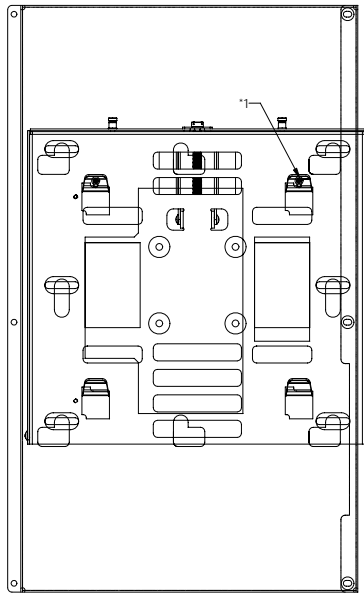
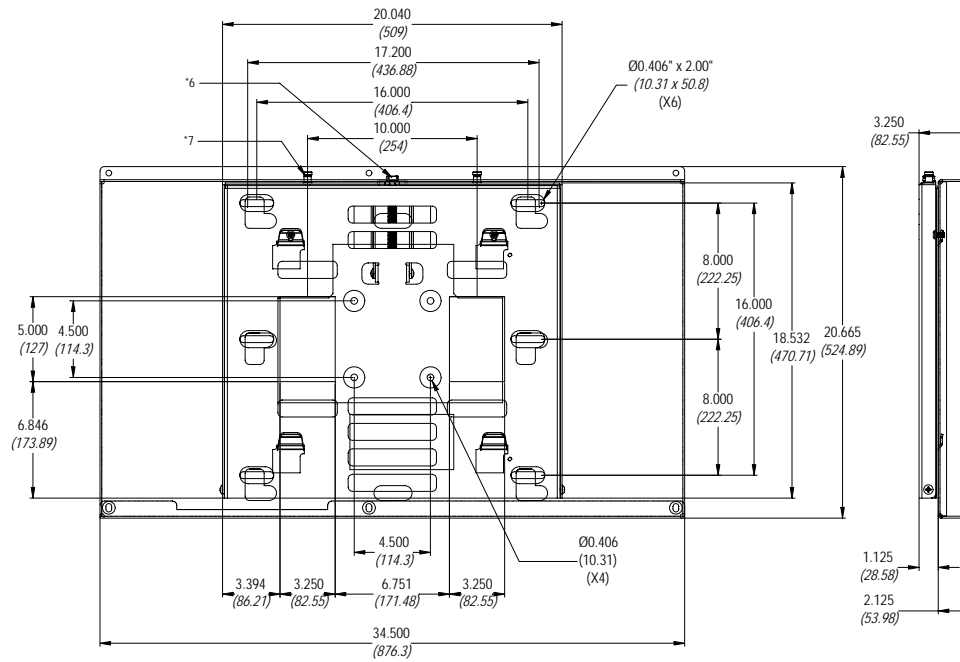


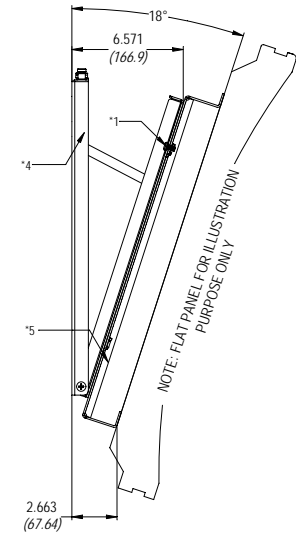
Dimensions shown in inches and (mm)



VERTICAL MOUNTING



HORIZONTAL MOUNTING



NOTES:

- \*1 - M6 x 12 phillips screws for additional security when mounting to tilt mounts, ceiling adapters and floor stands only.
- \*2 - Cable access holes
- \*3 - 4.5" hole pattern for ceiling adapters and floor stands.
- \*4 - Wall plate
- \*5 - Mounting bracket
- \*6 - Jack screw
- \*7 - Set Pins (X2)

BID SPECIFICATIONS

- CONSTRUCTION OF THE PWM-6121 - 12 (ga) CRS
- MOUNTING TO 16" WOOD STUDS
- ALL SHARP EDGES ARE BROKEN FOR A SMOOTH FINISH
- MAXIMUM BEND RADIUS ARE (.06) (.03)
- DRAWINGS ARE INTERPRET BY (Y14.5)

TITLE

PWM-6121

## Free Manuals Download Website

<http://myh66.com>

<http://usermanuals.us>

<http://www.somanuals.com>

<http://www.4manuals.cc>

<http://www.manual-lib.com>

<http://www.404manual.com>

<http://www.luxmanual.com>

<http://aubethermostatmanual.com>

Golf course search by state

<http://golfingnear.com>

Email search by domain

<http://emailbydomain.com>

Auto manuals search

<http://auto.somanuals.com>

TV manuals search

<http://tv.somanuals.com>