





# User's Guide

Digital Audio Player

**MP3128**

**USB**  
UNIVERSAL SERIAL BUS

**128 MB**  
MEMORY





Digital Audio Player

**MP3128**

**User's Guide**





# Content

---

|   |    |
|---|----|
| Controls and Indicators                             | 4  |
| Inserting the Battery                               | 5  |
| LCD Indicators and Icons                            | 6  |
| MENU LIST   | 7  |
| Playback/ Stop Function                             | 8  |
| Adjusting the Volume                                | 10 |
| Scanning Through a Music File                       | 11 |
| To search for a desired music track during playback | 12 |
| Menu Mode   | 14 |
| Repeat Track Mode                                   | 15 |
| Setting the Equalizer(EQ)                           | 16 |
| Setting the Hold Function                           | 17 |
| Deleting a file                                     | 18 |
| MP3128 Setting Options                              | 19 |
| Installing the Software on a Personal Computer(PC)  | 23 |



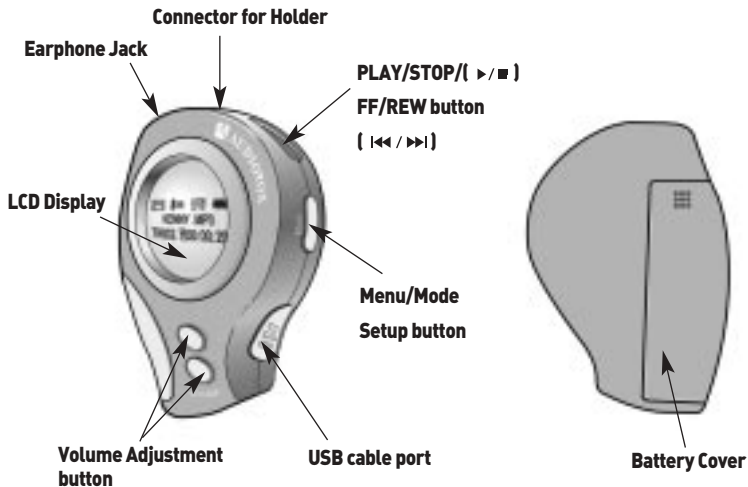
---

|  |    |
|--|----|
| Connecting the MP3128 to a PC          | 24 |
| Installing the USB Driver              | 25 |
| Confirming the USB Driver Installation | 26 |
| How to use Groove Software             | 27 |
| Transferring a file to the MP3128      | 28 |
| Transferring a file to the PC          | 29 |
| Deleting a file                        | 30 |
| Changing a file name                   | 31 |
| Formatting the MP3128                  | 32 |
| Moving the location of a file          | 33 |
| Setting options                        | 34 |
| Cautions                               | 35 |
| Troubleshooting                        | 36 |
| Specifications & Accessories           | 38 |
| Warranty                               | 39 |



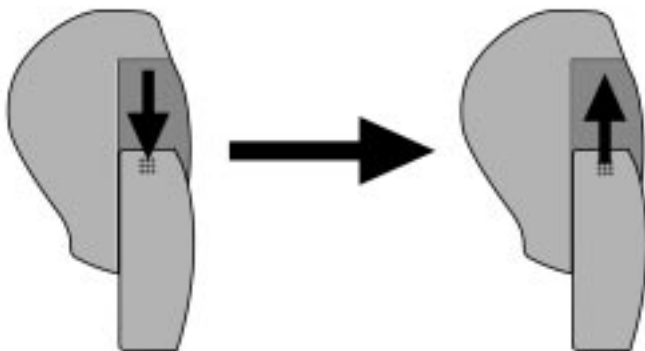
## Controls and Indicators

---



## Inserting the Battery

MP3128



Press and pull the battery cover downward in the direction of the arrow to open.

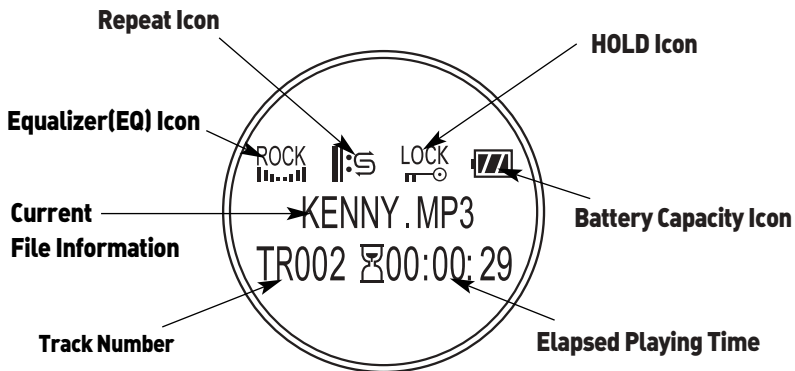
Insert one AA battery observing polarity and push the battery cover upward in the direction of the arrow to close.





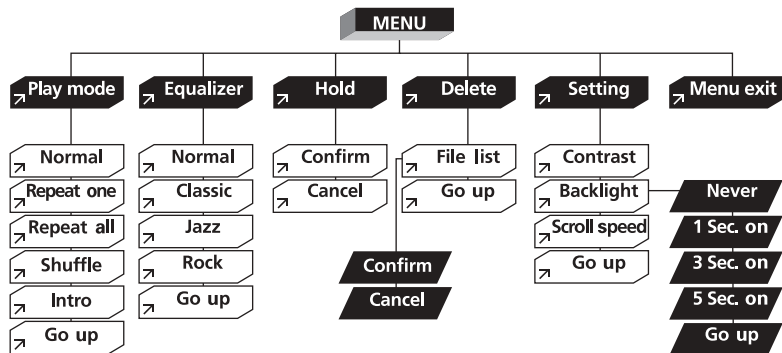
## LCD Indicators and Icons

---



# MENU LIST

MP3128





## Playback / Stop Function

---

### To playback

Insert the battery and press the PLAY/STOP button( ▶/■ ), the "Audiovox" logo and memory information will be displayed on the LCD screen.

The first track will be played automatically.



- Current File Information
  - Title\_Singer Information
  - Etc. Information display



## To stop

During playback, press the PLAY/STOP button (▶/■) once.  
Playback will be stopped.



※ Note : If the MP3128 is inactive for 10 seconds in the STOP mode,  
the power will be automatically shut off.

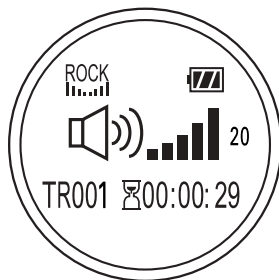


## Adjusting the Volume

---

### To adjust the Volume

Press the VOLUME buttons located on the front of the unit to adjust volume.

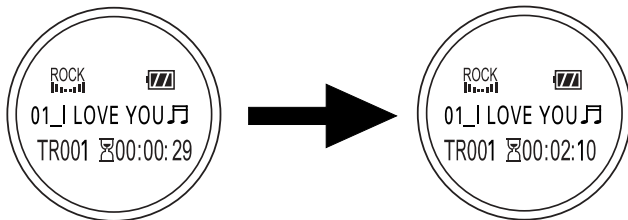


- You can adjust volume from 0 to 20.
  - To Adjust Volume Slowly : Momentarily Press and Release the front panel buttons in the direction desired to adjust the volume 1 interval at a time(0-20) until the desired volume is reached.
  - To Adjust Volume Rapidly : Press and Hold the front panel buttons in the direction desired until the desired volume is reached .



## Scanning through a music file

To search a track during playback, press and HOLD the FF/REW button(⏮/⏭) up to fast forward through the track. Press and the HOLD FF/REW button(⏮/⏭) down to fast rewind through the track. Release the button to playback again.



- To return the beginning of current file after play ends, press and release the FF/REW button(⏮/⏭) down during playback.
- Fast Forward  
For the first 5 seconds : 5 times faster  
After 5 seconds : 10 times faster

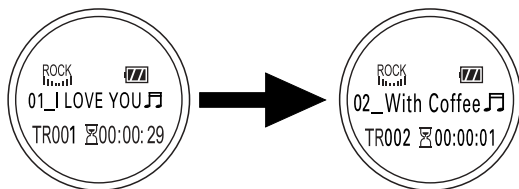


## To search for a desired music track during playback

---

### To search for a desired music track during playback

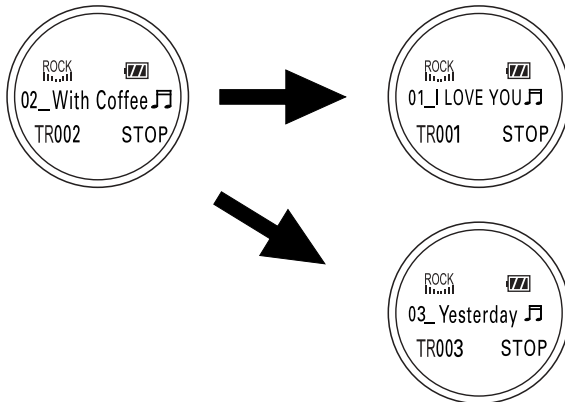
- To search for a desired music track in an upwardly direction :  
Momentarily press and release upward the FF/REW button( ⏮ / ⏭ ) until the deired music track is reached.
- To search for a desired music track in a downwardly direction :  
Momentarily press and release downward the FF/REW button( ⏮ / ⏭ ) until the desired music track is reached.
- If the FF/REW button( ⏮ / ⏭ ) is pressed shortly after 5 seconds after starting playback, the current file will be played from the beginning of the current file.





## To search for a desired music track in the stop mode

- Momentarily press and release the PLAY/STOP button( ▶/■ ) to stop the playback of a music track
- Press the FF/REW button( ⏮/⏭ ) up to skip ahead one track at a time.
- Press the FF/REW button( ⏮/⏭ ) down to skip to the previous track at a time.
- Momentarily press and release the PLAY/STOP button( ▶/■ ) to play.



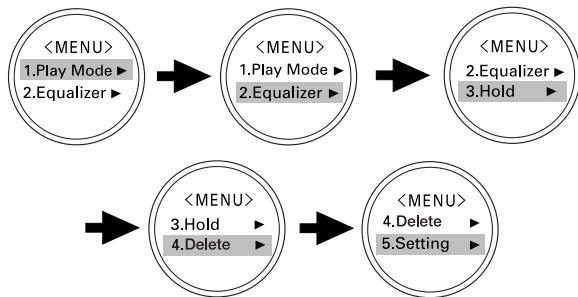




## Menu Mode

Press and hold the MODE button for more than 2 seconds during playback or in the STOP mode to access the MENU mode.

Use the PLAY/STOP button( ▶/■ ) to select. Use the FF/REW button( ◀◀/▶▶ ) to move to other options.



Press the MODE button again to exit the MENU mode.

- Play Mode : Setting the repeat playback(Initial setting : Normal)
- Equalizer : Setting the Equalizer function
- Hold : Setting the Hold function
- Delete : Deleting files
- Setting : Setting the MP3128 display Contrast, Backlight and Scroll Speed

# Repeat Track Mode

MP3128



Press the MODE button for more than 2 seconds during playback or in the STOP mode to access the MENU mode. Select "1. Play Mode" in the MENU. Use the FF/REW button( ◀◀ / ▶▶ ) to move to other options and use the PLAY/STOP button( ▶ / ■ ) to select.



- Normal - Repeat One - Repeat All - Shuffle - Intro
- Normal : Playback once in the track order recorded  
- The initial setting is "Normal" and there is no icon display in this mode.
- Repeat One : To listen to one track only repeatedly
- Repeat All : To listen to all tracks repeatedly
- Shuffle : To listen to the tracks in random order
- Intro : To listen to the beginning of all the tracks stored(Plays for 10 seconds)
- Go Up : To move to the upper menu mode



## Setting the Equalizer(EQ)

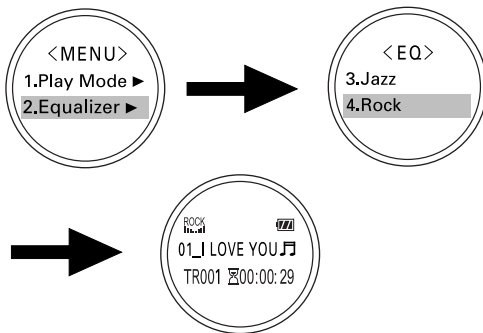
---

Select "2. Equalizer" in the MENU mode.

Move to the desired tone by using the FF/REW button( ◀◀ / ▶▶ ).

There are four color tones.

Select one of four tones by pressing the PLAY/STOP button( ▶/■ ).



To move to the upper mode, select "5.Go up".

# Setting the Hold Function

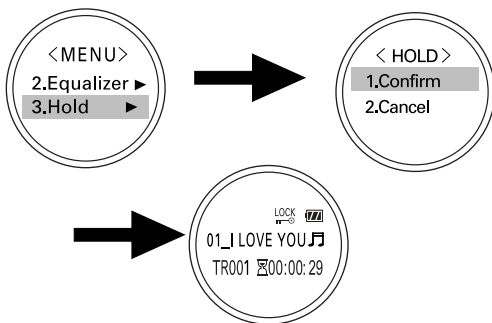
MP3128



Select "3.Hold" in the MENU mode.

After selecting "1.Confirm" by pressing the FF/REW button ( ◀◀ / ▶▶ ).

Finish the setting by pressing the PLAY/STOP button ( ▶ / ■ ).



- All buttons are disabled in the HOLD mode.
- Exit the HOLD mode by pressing the PLAY/STOP button ( ▶ / ■ ) for more than 2 seconds.



## Deleting a file

---

Select "4.Delete" in the MENU mode.

Select a file to be deleted.

Press the PLAY/STOP button( ▶/■ ) to delete the file.



After the file is deleted the MP3128 will switch to the File List menu.

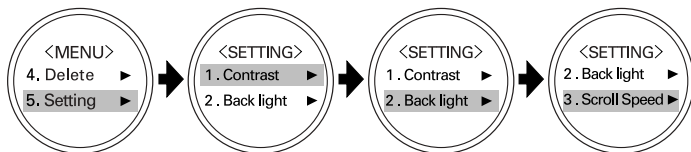
To exit from the DELETE mode, select "5.Go up" or press the MODE button.



Select "5.Setting" in the MENU mode.

Move to the desired function in the SETTING mode by pressing the FF/REW button (◀◀ / ▶▶).

Select the desired function by pressing the PLAY/STOP button( ▶ / ■ ).



- Cont rast - See page 20
- Back light- See page 21
- Scroll Speed - See page 22



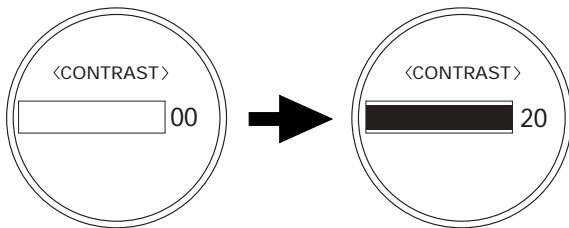
## Mp3128 Setting Option

---

### Setting the LCD Contrast

After selecting "5.Setting" in the MENU mode, choose "1. Contrast".

Set the contrast by pressing the FF/REW button( ⏪ / ⏩ ).

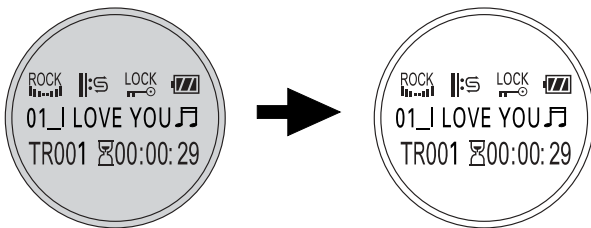


- You can adjust the contrast from 0 to 20.
- To exit press the PLAY/STOP button( ▶ / ■ ).



## Setting the Backlight

After selecting "5.Setting" in the MENU mode, choose "2.Backlight".  
Set the backlight by pressing the FF/REW button(◀◀/▶▶).



Settings Available :

- Never : No backlight(You can save battery life, if it is set to never)
- 1 Sec. ON : Backlight ON for 1 Second
- 3 Sec. ON : Backlight ON for 3 Seconds
- 5 Sec. ON : Backlight ON for 5 Seconds

Finish the setting by pressing PLAY/STOP(▶/■) or select "5. Go Up" to switch to the upper menu.



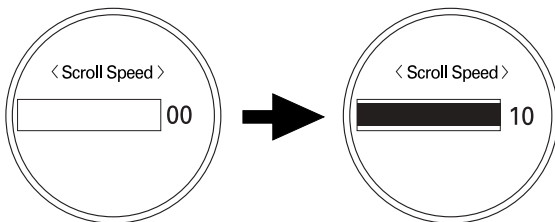


## MP3128 Setting Options

---

### Setting Scroll Speed

After selecting "5.Setting" in the MENU mode, choose "3.Scroll Speed".  
Set the scroll speed by pressing the FF/REW button(◀◀/▶▶).



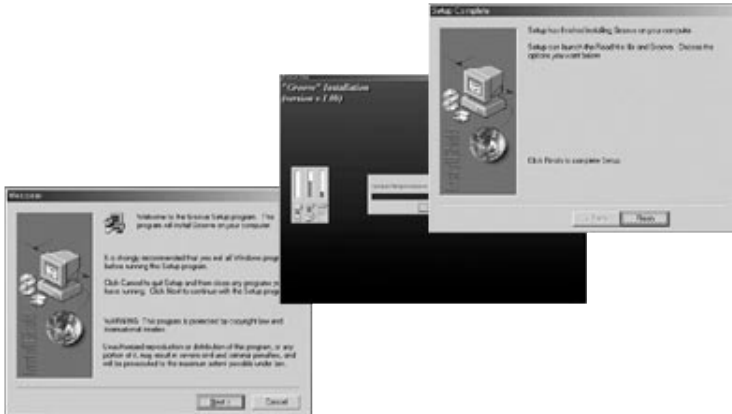
- You can adjust the scroll speed from 0 to 10.
- To exit press the PLAY/STOP button(▶/■).

# Installing the Software on a Personal Computer(PC)



Insert the GROOVE CD supplied with the MP3128 into the CD-ROM drive.

- Click the [Next] button at every consecutive window.  
The following figure will appear.

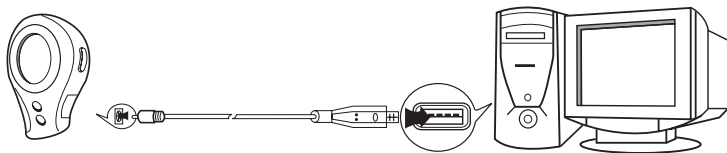


- Press the [Finish] button and the installation is complete.

## Connecting the MP3128 to a PC

Connect the MP3128 and the PC using the USB Cable supplied with the MP3128.

- "GROOVE" must be installed before connecting to the computer.
- If "New Hardware add wizard" appears, press [CANCEL] and install the "GROOVE".  
(page 23)
- If the USB driver does not install automatically, refer to "Installing the USB Driver".  
(page 25)



### Minimum PC System Requirements

Pentium 150MHz / Windows98/ ME /2000 / XP / 32MB RAM or higher /  
CD-ROM Drive (4X or higher) / Supports of USB function

# Installing the USB Driver

MP3128



If you connect the PC and the MP3128 with the USB cable before software installation, the driver installation window will be appear automatically.

## In case of Windows98/ME



**Insert the Installation CD  
and select proper drive name.**

**Installation is completed.  
Restart your computer.**

## In case of Windows2000



**Installation is completed.  
Restart your computer.**

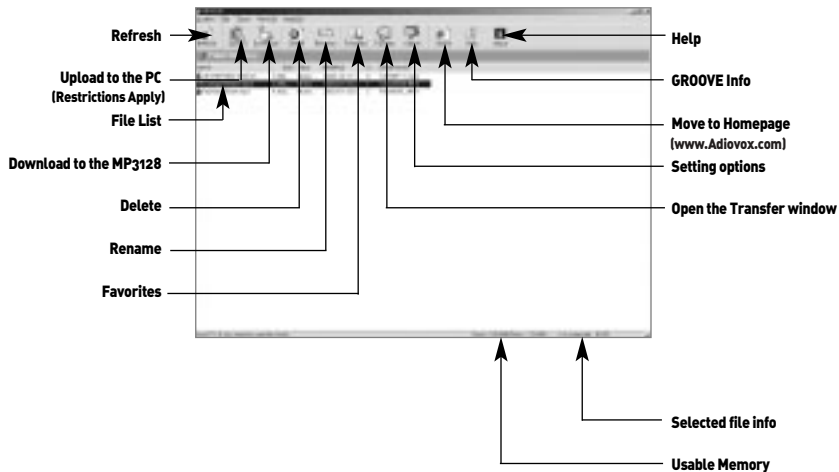


## Confirming the USB Driver Installation

Connect the MP3128 to the PC with the supplied USB cable and check whether or not the AUDIOVOX USB Driver is shown on the Hardware Manager Window. If it is shown, the driver installation was completed successfully.

- AUDIOVOX USB Driver will appear only when the MP3128 is connected to the supplied USB Cable and powered up.
- When the driver installation has not completed successfully, reboot the PC and install the driver again referring to "Installing the USB Driver". (page 25)



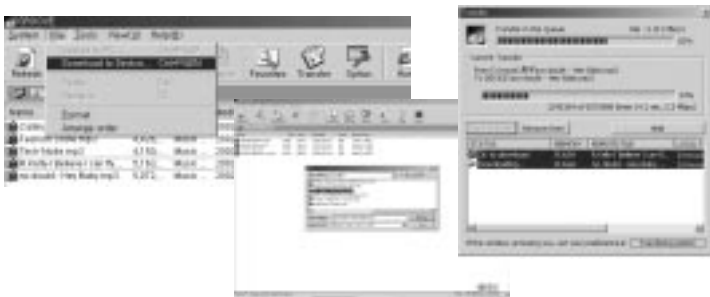




## Transferring a file to MP3128

---

1. Connect the MP3128 to the PC.
2. Run GROOVE Software.



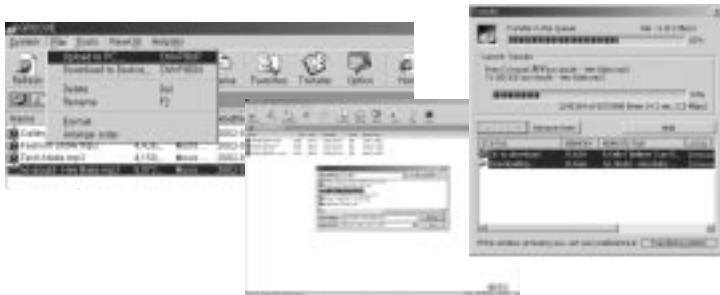
3. Select [File]→[Download to Device] or [Download] icon on the Menu Bar.
4. Select the desired file to be transferred.

# Transferring a file to the PC

MP3128



1. Connect the MP3128 to the PC and run GROOVE.
2. Select the desired file to be transferred.
3. Select [File]→[Upload to PC] or [Upload] icon on the Menu bar.



※ Notice : Uploading of Copyrighted Music files(\*.MP3 or \*.MP2) is prohibited by copyright law.

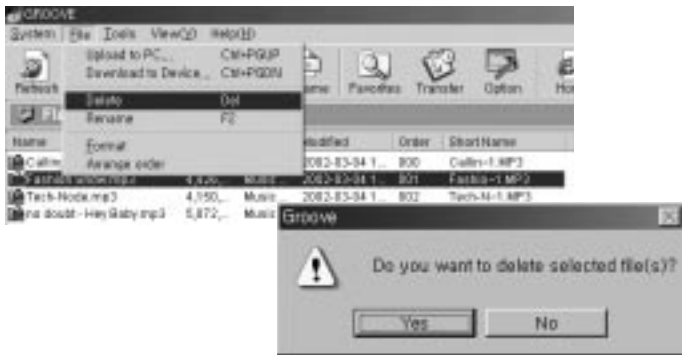






## Deleting a file

1. Connect the MP3128 to the PC and run GROOVE.
2. Select the file you want to delete.
3. Select [File]→[Delete] or [Delete] icon on the Menu Bar.
4. A window will appear to confirm the file deletion, select [YES].

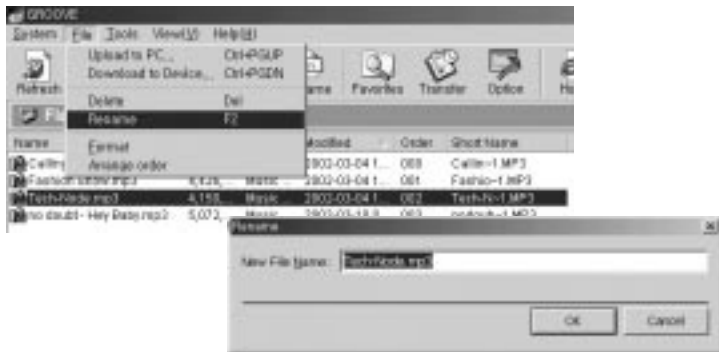


# Changing a file name

MP3128



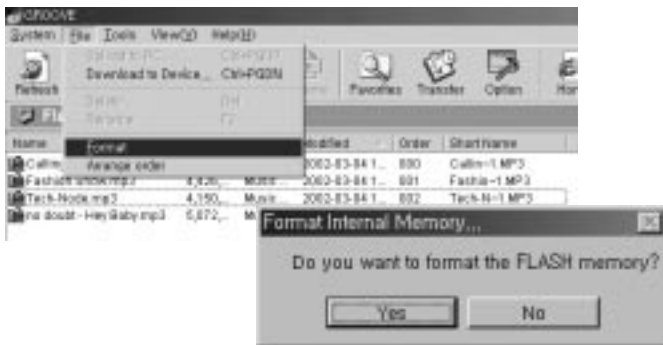
1. Connect the MP3128 to the PC and run GROOVE.
2. Select the file you wish to rename.
3. Select [File]→[Rename] or [Rename] icon on the Menu Bar.
4. Press OK to finish.





## Formatting the MP3128

1. Connect the MP3128 to the PC and run GROOVE.
2. Select [File]→[Format] on the Menu Bar, or [Format] icon
3. A window will appear to confirm the formatting, select [YES].



※ Note : Formatting will delete all files from memory.

# Moving the location of a file

MP3128



1. Connect the MP3128 to the PC and run GROOVE.
2. Select a [Favorites] icon.
3. Select the file you wish to move.
4. Drag and drop the selected file to the desired location.



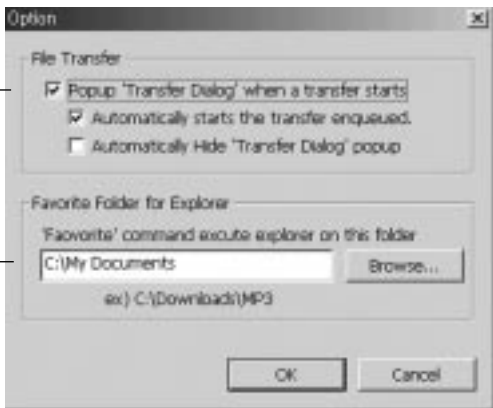


## Setting options

---

Select [Tools]→[Option] on the menu bar or [Option] icon

- Viewing download status



- Setting a [Favorites] folder

# Cautions

---

MP3128



- Do not drop the unit.
- Do not let the unit get wet.
  - If the unit is wet with water, remove batteries and quickly wipe with a dry cloth and let sit for 4-5 hours.  
Contact a service center if unit malfunctions.
- Keep the unit away from places with excessive moisture, magnetism or heat.
- Do not clean the unit with thinner, alcohol or benzene.  
It may cause damage.



## Troubleshooting

---

- Software is not operational.
  - The problem may be caused from unsuccessful software installation, refer to page 23 to 26.
- The unit wouldn't work and there is no indication on the display window.
  - Check the battery charge level and check the polarity +/- of the battery.
- The unit wouldn't work even when the buttons are pressed.
  - Check if the HOLD button is Off.
- No music even when pressing the PLAY button in the MP3 mode.
  - Check if MP3 files are stored in the Internal Memory.
- Cannot download the MP3 file.
  - Check if the driver is properly installed on the computer.
  - Check the connection between the PC and the USB Cable port.
- The LCD window is dim.
  - Check the Contrast.
- Backlight is not turned on.
  - Check the setup of backlight.
  - If the current voltage of battery is low, the backlight is automatically not turned on for longer playback.



- The MP3128 automatically turns Off.
  - If there is no input for 10 seconds in the STOP mode.
  - Check if there are any music files stored.
- I want to install more memory
  - Unit can not be upgraded.





## Specifications & Accessories

|                                |  |
|--------------------------------|--|
| MODEL                          | MP3128   |
| MEMORY                         | 128 MB Internal Memory                               |
| VOLTAGE                        | 1.5V   |
| BATTERY                        | 1.5V AA ALKALINE 1EA<br>Lasts approximately 18 hours |
| SIZE(W X D X H)                | 1.6" X .86" X 2.8"<br>(42 X 22 X 70MM)               |
| WEIGHT                         | 1 ounce (32g)<br>(Without Battery)                   |
| CASE                           | Plastic  |
| FILE TRANSFER SPEED            | MAX. 2.4Mbps   |
| S/N RATIO                      | 85dB with 20kHz Filter                               |
| EARPHONE OUTPUT                | 6mW @ 16 $\Omega$                                    |
| OUTPUT FREQUENCY RANGE         | 20Hz ~ 20KHz   |
| OPERATING TEMPERATURE PROPERTY | 14 °F ~ 122 °F (10 °C ~ +50 °C)                      |



**Earphone**



**USB Cable**



**1.5 V AA Battery 1EA**



**User's Manual**



**GROOVE Software CD**



**Holder**



### 90 DAY LIMITED WARRANTY

Applies to Audiovox Internet Products

AUDIOVOX ELECTRONICS CORPORATION (the Company) warrants to the original retail purchaser of this product that should this product or any part thereof, under normal use and conditions, be proven defective in material or workmanship within 90 days from the date of original purchase, such defect(s) will be repaired or replaced with reconditioned product (at the Company's option) without charge for parts and repair labor.

To obtain repair or replacement within the terms of this Warranty, the product is to be delivered with proof of warranty coverage (e.g. dated bill of sale), specification of defect(s), transportation prepaid, to an approved warranty station. For the location of the nearest warranty station to you, call toll-free to our control office: 1-800-290-6650

This Warranty does not extend to the elimination of externally generated static or noise, to correction of antenna problems, to costs incurred for installation, removal or reinstallation of the product, or damage to tapes, discs, speakers, accessories, or electrical systems. This Warranty does not apply to any product or part thereof which, in the opinion of the Company, has suffered or been damaged through alteration, improper installation, mishandling, misuse, neglect, accident, or by removal or defacement of the factory serial number/bar code label(s).

THE EXTENT OF THE COMPANY'S LIABILITY UNDER THIS WARRANTY IS LIMITED TO THE REPAIR OR REPLACEMENT PROVIDED ABOVE AND, IN NO EVENT, SHALL THE COMPANY'S LIABILITY EXCEED THE PURCHASE PRICE PAID BY PURCHASER FOR THE PRODUCT.



## Warranty

---

This Warranty is in lieu of all other express warranties or liabilities. ANY IMPLIED WARRANTIES, INCLUDING ANY IMPLIED WARRANTY OF MERCHANT ABILITY, SHALL BE LIMITED TO THE DURATION OF THIS WRITTEN WARRANTY. ANY ACTION FOR BREACH OF ANY WARRANTY HEREUNDER INCLUDING ANY IMPLIED WARRANTY OF MERCHANTABILITY MUST BE BROUGHT WITHIN A PERIOD OF 30 MONTHS FROM DATE OF ORIGINAL PURCHASE. IN NO CASE SHALL THE COMPANY BE LIABLE FOR ANY CONSEQUENTIAL OR INCIDENTAL DAMAGES FOR BREACH OF THIS OR ANY OTHER WARRANTY, EXPRESS OR IMPLIED, WHATSOEVER.

No person or representative is authorized to assume for the Company any liability other than expressed herein in connection

with the sale of this product. Some states do not allow limitations on how long an implied warranty lasts or the exclusion or limitation of incidental or consequential damage so the above limitations or exclusions may not apply to you. This Warranty gives you specific legal rights and you may also have other rights, which vary from state to state.

128-6001

**U.S.A.:** AUDIOVOX ELECTRONICS CORPORATION, 150 MARCUS BLVD., HAUPPAUGE, N Y. 11788

**CANADA:** AUDIOVOX CANADA LTD., MISSISSAUGA, ONTARIO, CANADA L4W5A1

**Memo**

**MP3128**



## Free Manuals Download Website

<http://myh66.com>

<http://usermanuals.us>

<http://www.somanuals.com>

<http://www.4manuals.cc>

<http://www.manual-lib.com>

<http://www.404manual.com>

<http://www.luxmanual.com>

<http://aubethermostatmanual.com>

Golf course search by state

<http://golfingnear.com>

Email search by domain

<http://emailbydomain.com>

Auto manuals search

<http://auto.somanuals.com>

TV manuals search

<http://tv.somanuals.com>