

FIELD REPLACEABLE UNIT DOCUMENTATION

Tecra™

9000 Series

GENERAL INFORMATION

**Tools Required for Proper
Disassembly and Reassembly:**

1. Phillips Screwdriver (Size 0&1)
2. Flat head Screwdriver
3. Security Torx (Size 7)
4. Case Separator
5. ESD Wrist Strap
6. ESD mats
7. Tweezers

Before attempting any of the following procedures, make sure that the main battery and AC adaptor is not connected to the unit and the environment in which you are working on is protected from Electro-Static Discharge(ESD).

TOSHIBA

Tough Enough for Today's World.

Download service manual and resetter printer at <http://printer1.blogspot.com>

FIELD REPLACEABLE UNIT DOCUMENTATION

TecraTM **9000 Series**

TABLE OF CONTENTS:

- 1. BATTERY PACK REMOVAL**
- 2. OPTIONAL PC CARD REMOVAL**
- 3. SELECT BAY REMOVAL**
- 4. CD-R/W/DVD-ROM DRIVE DISASSEMBLY**
- 5. MEMORY MODULE REMOVAL**
- 6. BLUETOOTH CARD REMOVAL**
- 7. HDD REMOVAL**
- 8. KEYBOARD REMOVAL**
- 9. MODEM BOARD REMOVAL**
- 10 WIRELESS LAN CARD REMOVAL**
- 11. TOP COVER REMOVAL**
- 12. COOLING MODULE REMOVAL**
- 13. CPU REMOVAL**
- 14. MICROPHONE REMOVAL**
- 15. SD/SOUND BOARD REMOVAL**
- 16. RTC BATTERY REMOVAL**
- 17. LED/BLUETOOTH BOARD REMOVAL**
- 18. TOP PCB REMOVAL**
- 19. BOTTOM PCB REMOVAL**
- 20. MEMBRANE SWITCH REMOVAL**
- 21. SPEAKERS REMOVAL**
- 22. 14.1" DISPLAY MASK REMOVAL**
- 23. FL INVERTER AND 14.1" LCD REMOVAL**

TOSHIBA

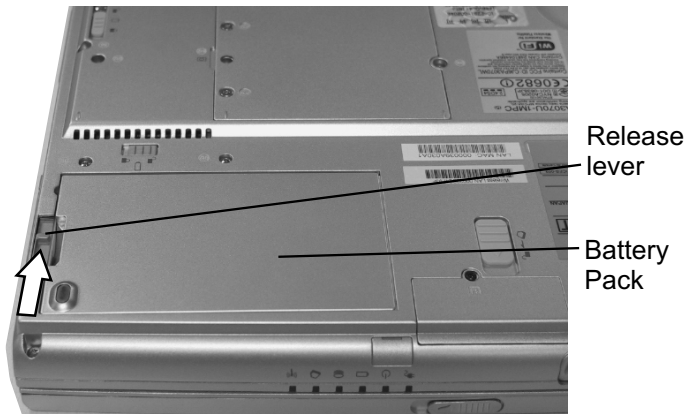
Tough Enough for Today's World.

Download service manual and resetter printer at <http://printer1.blogspot.com>

FIELD REPLACEABLE UNIT DOCUMENTATION

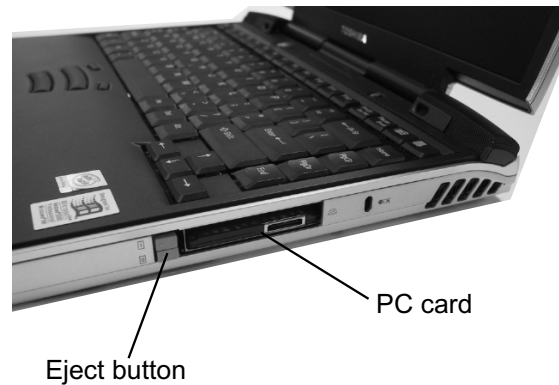
Tecra™ 9000 Series

BATTERY PACK REMOVAL



1. Turn the computer upside down as shown.
2. Slide the **battery release lever** in the direction of the arrow.
3. Lift out the **battery**.

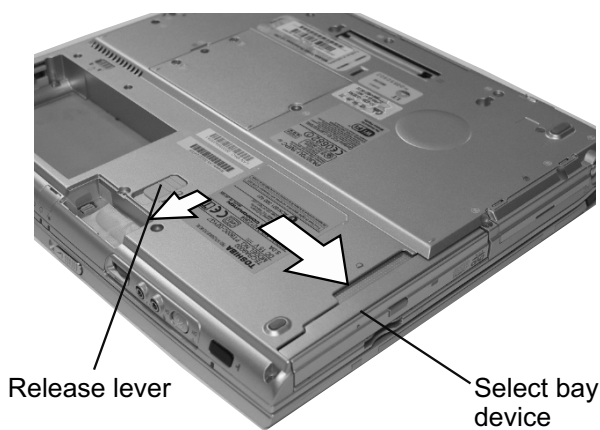
OPTIONAL PC CARD REMOVAL



1. Press the **eject button** for the PC card you want to remove.
2. Press the extended **eject button** to pop the PC Card out.
3. Grasp the **PC card** and remove it.

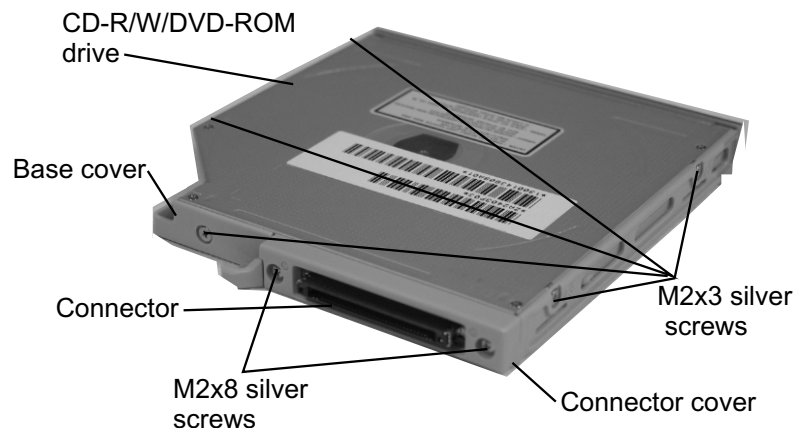
NOTE: Before removing any PC Card device, make sure it is "STOPPED" in the PC Card manager.

SELECT BAY REMOVAL



1. Turn the computer upside down.
2. Slide the **release lever** in the direction of the arrow.
3. Pull out the **select bay device** in the direction of the arrow.

CD-RW/DVD-ROM DRIVE DISASSEMBLY



1. Remove **five M2x3 silver screws** securing the base cover and lift off the **base cover**.
2. Remove **two M2x8 silver screws** securing the connector cover.
3. Remove the **connector** and the **connector cover** from the CD- R/W/DVD-ROM drive.

TOSHIBA

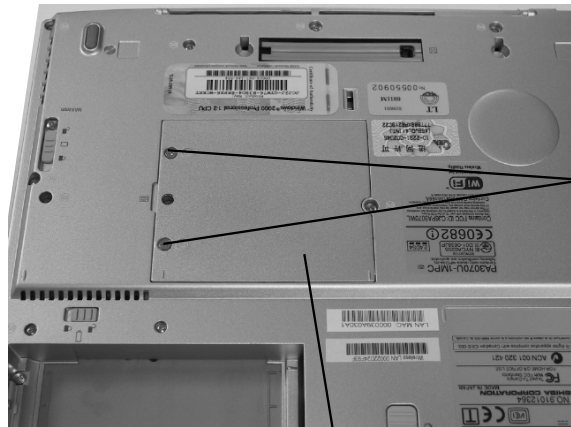
Tough Enough for Today's World.

Download service manual and resetter printer at <http://printer1.blogspot.com>

FIELD REPLACEABLE UNIT DOCUMENTATION

Tecra™ 9000 Series

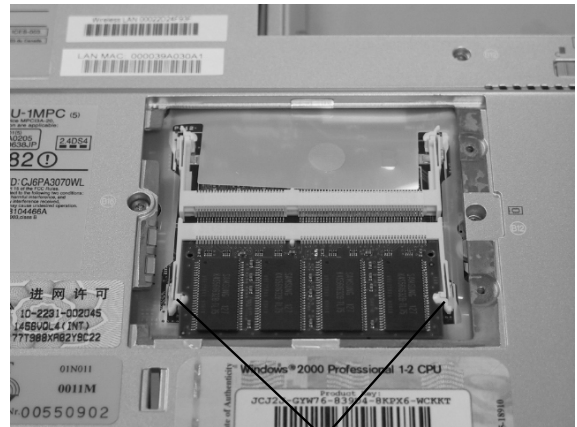
MEMORY MODULE REMOVAL



M2.5x2.8
silver flat
head screws

Memory cover

1. Turn the computer upside down.
2. Remove **two M2.5x2.8 silver flat head screws** and remove the **memory cover**.



Memory clips

3. Spread the **memory clips** outward and pull the **memory module** out of the connector on a 45 degree angle.

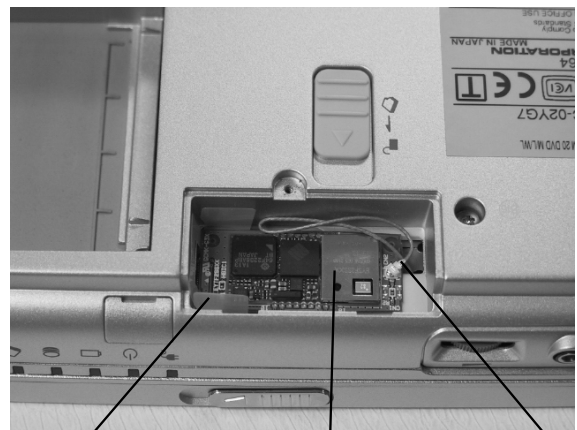
BLUETOOTH CARD REMOVAL



Bluetooth cover

M2x4 black security torx screw

1. Remove **one M2x4 black security torx screw** securing the bluetooth cover.
2. Lift out the **bluetooth cover**.



Plastic insulator

Bluetooth card

Coaxial cable

3. Disconnect the **coaxial cable** from the bluetooth card.
4. Lift up the **plastic insulator** to disconnect the card.

TOSHIBA

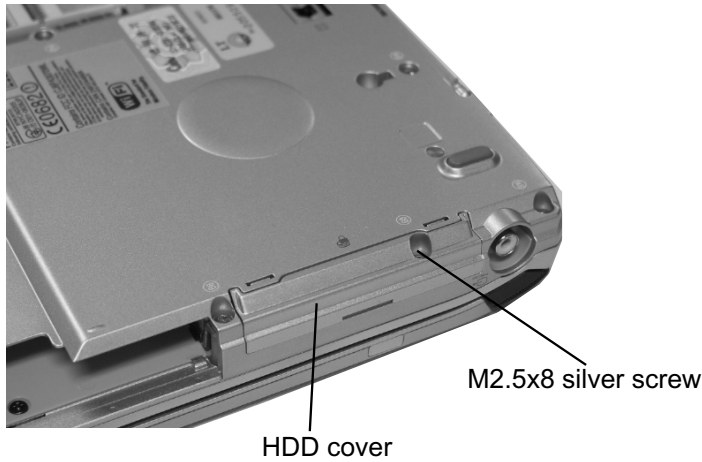
Tough Enough for Today's World.

Download service manual and resetter printer at <http://printer1.blogspot.com>

FIELD REPLACEABLE UNIT DOCUMENTATION

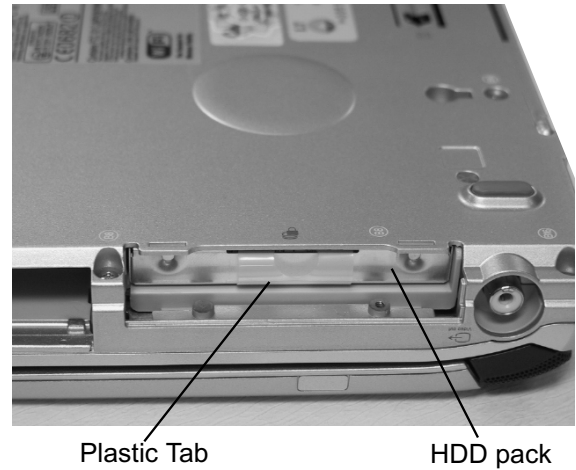
Tecra™ 9000 Series

HDD REMOVAL

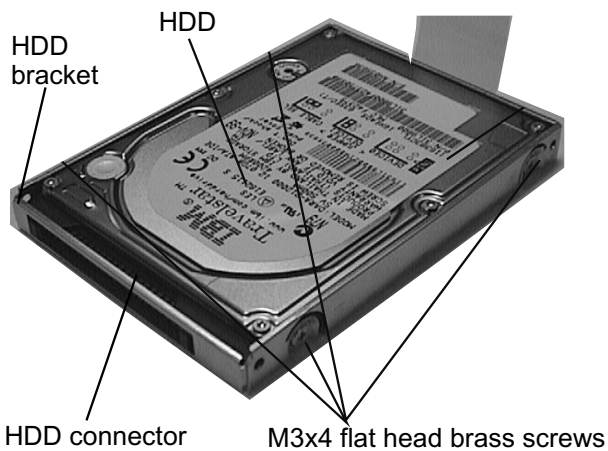


1. Turn the computer upside down.
2. Remove **one M2.5x8 silver screw** securing HDD cover.
3. Remove the **HDD cover**.

HDD REMOVAL



4. Unfold the **plastic tab** and pull to remove the HDD from the bay.



5. Remove **four M3x4 brass flat head screws** securing the HDD to the bracket and lift the drive out of the **bracket**.
6. Unplug the **HDD connector** from the drive.

KEYBOARD REMOVAL



1. Turn the computer upside down.
2. Remove **one M2.5x16 silver screw** securing the keyboard on the bottom cover.

TOSHIBA

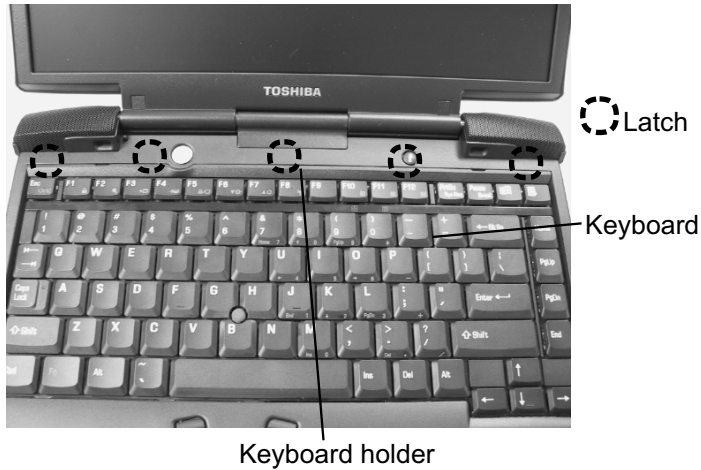
Tough Enough for Today's World.

Download service manual and resetter printer at <http://printer1.blogspot.com>

FIELD REPLACEABLE UNIT DOCUMENTATION

Tecra™ 9000 Series

KEYBOARD REMOVAL



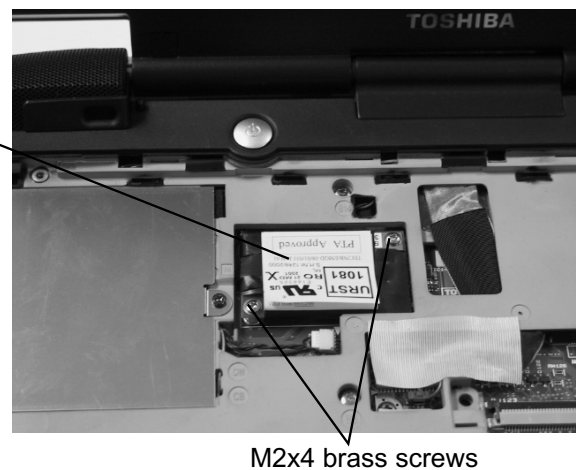
2. Turn the computer right side up and open the display panel.
3. Using the **case separator**, unlatch the **keyboard holder** at the top of the **keyboard**.

4. Remove **two M2.5x2.8 silver screws** securing the keyboard.

KEYBOARD REMOVAL



MODEM BOARD REMOVAL



5. Lift out the **keyboard** and set it as shown above (Place an insulator between the keyboard and the LCD to prevent scratches on the LCD).
6. Disconnect the **keyboard cable** from **PJ123** on the system board.

1. Remove **two M2x4 brass screws** securing the modem board.
2. Disconnect the **modem board** from PJ125 on the system board.

TOSHIBA

Tough Enough for Today's World.

Download service manual and resetter printer at <http://printer1.blogspot.com>

FIELD REPLACEABLE UNIT DOCUMENTATION

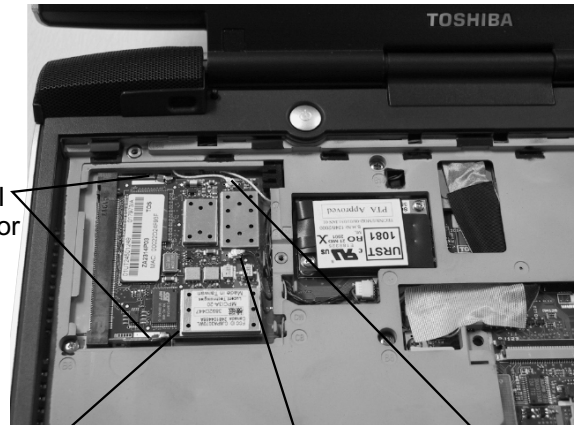
Tecra™ 9000 Series

WIRELESS LAN CARD REMOVAL



Mini PCI cover M2.5x4 security torx screw

1. Remove **one M2x4 security torx screw** securing the mini PCICover and lift out the cover.

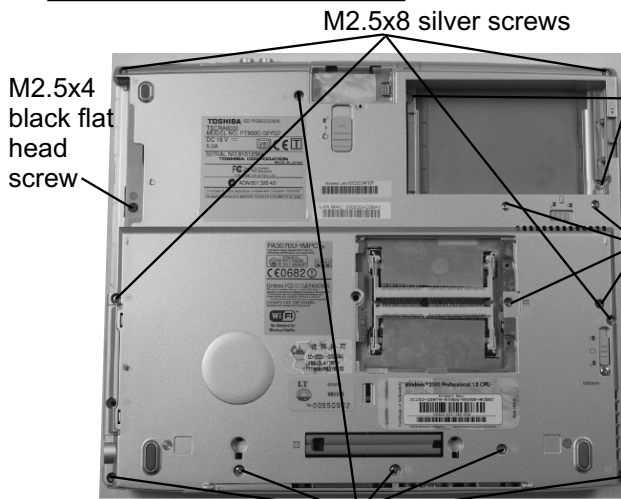


Mini-PCI connector clips

Wireless LAN card Black coax cable White coax cable

2. Disconnect the **black and white coax** from the wireless LAN card.
3. Spread the **Mini-PCI connector clips** and pull the **Wireless LAN card** out of the connector about 45 degree angle.

TOP COVER REMOVAL



M2.5x4 black flat head screw

M2.5x8 silver screws

M2.5x2.8 silver flat head screws

M2x12 silver screws

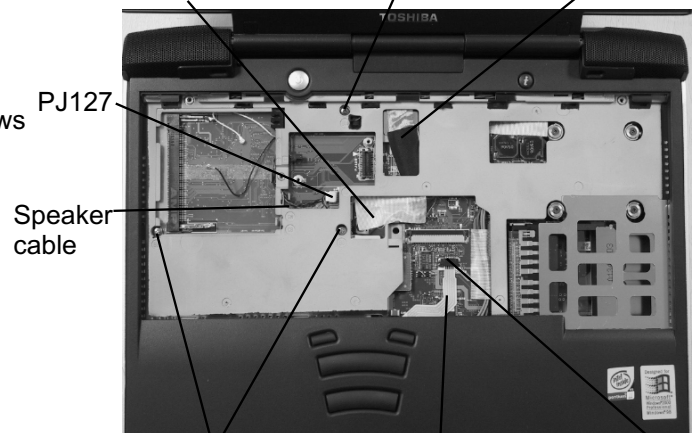
M2.5x16 silver screws

1. Turn the computer upside down and remove the following screws:

- 2 **M2.5x2.8 silver flat head screws**
- 1 **M2.5x4 black flat head screw**
- 4 **M2.5x8 silver screws**
- 4 **M2x12 silver screws**
- 6 **M2.5x16 silver screws**

2. Turn the computer right side up and open the display.

Glass tape M2.5x14 black screw LCD/FL cable



PJ127
Speaker cable

M2.5x8 silver screws Membrane switch cable PJ122

3. Disconnect the **speaker cable** from **PJ127** and the **membrane switch cable** from **PJ122** on the top board
4. Remove the **glass tape** securing the **LCD/FL cable** and disconnect the cable from the bottom board.
5. Remove **two M2.5x8 silver screws** and **one M2.5x14 black screw** from the keyboard area.
5. Lift out the **top cover assembly**.

Note: When installing the top cover, ensure that the bluetooth coaxial cable is properly routed to the Bluetooth slot.

TOSHIBA

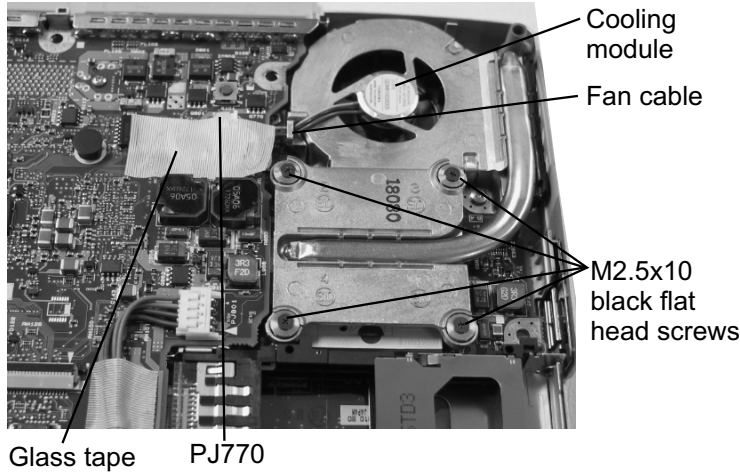
Tough Enough for Today's World.

Download service manual and resetter printer at <http://printer1.blogspot.com>

FIELD REPLACEABLE UNIT DOCUMENTATION

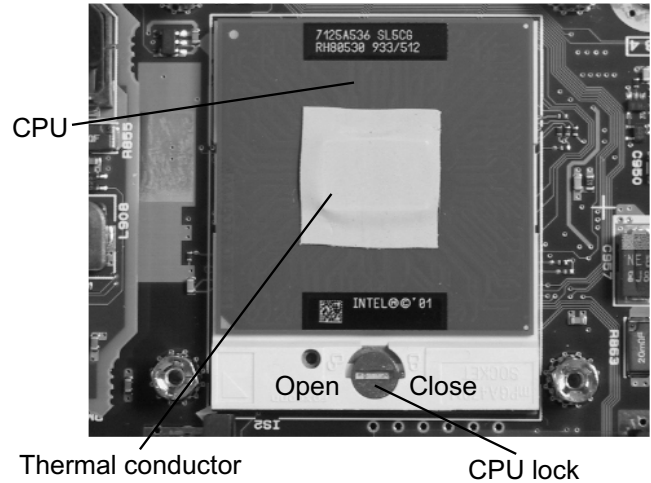
Tecra™ 9000 Series

COOLING MODULE REMOVAL



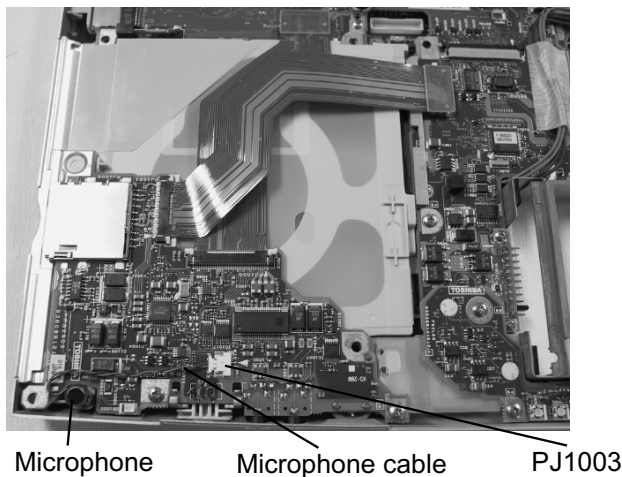
1. Remove the **glass tape** securing the fan cable and disconnect the **cable** from **PJ770** on the top board.
2. Remove **four M2x10 black flat head screws** securing the cooling module.
3. Lift out the **cooling module**.

CPU REMOVAL



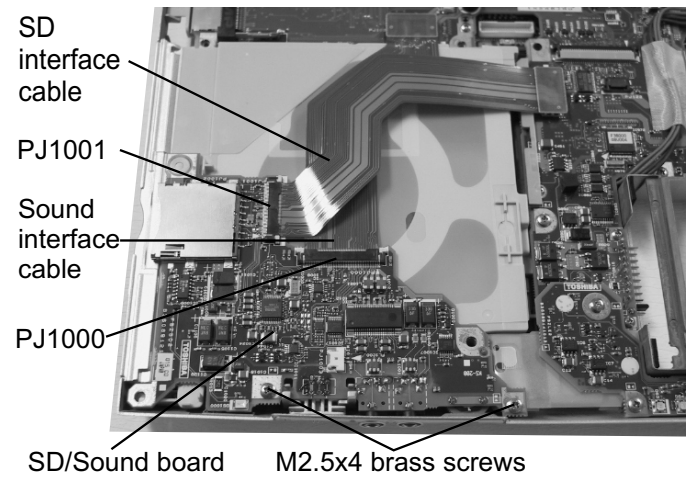
1. Peel off the **thermal conductor**.
2. Insert a **flat head screwdriver** and rotate it counter-clockwise to unlock the **CPU lock**.
3. Lift out the **CPU**.

MICROPHONE REMOVAL



1. Disconnect the **microphone cable** from **PJ1003** on the SD/Sound board.
2. Lift out the **microphone**.

SD/SOUND BOARD REMOVAL



1. Disconnect the **SD interface cable** from **PJ1001** and **sound interface cable** from **PJ1000** on the **SD/sound board**.
2. Remove **two M2.5x4 brass screws** securing the SD/Sound board.
3. Lift out the **SD/Sound board**.

TOSHIBA

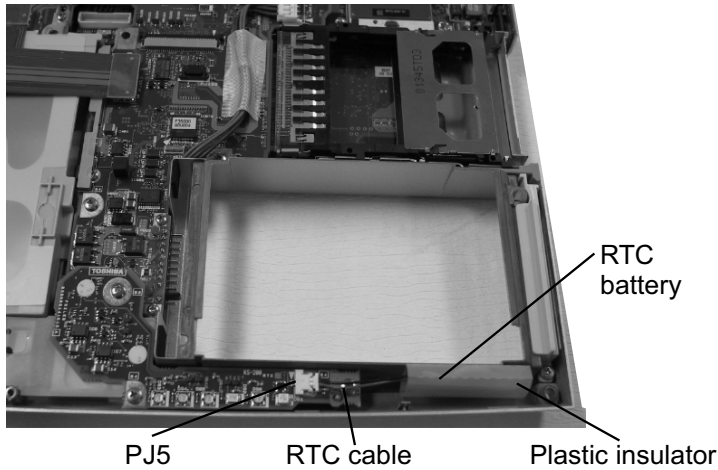
Tough Enough for Today's World.

Download service manual and resetter printer at <http://printer1.blogspot.com>

FIELD REPLACEABLE UNIT DOCUMENTATION

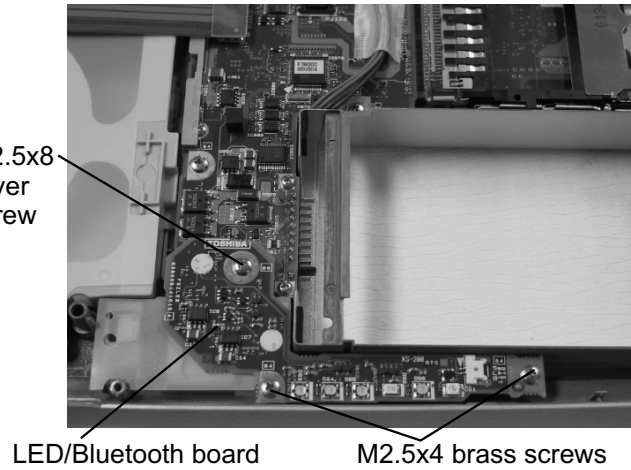
Tecra™ 9000 Series

RTC BATTERY REMOVAL



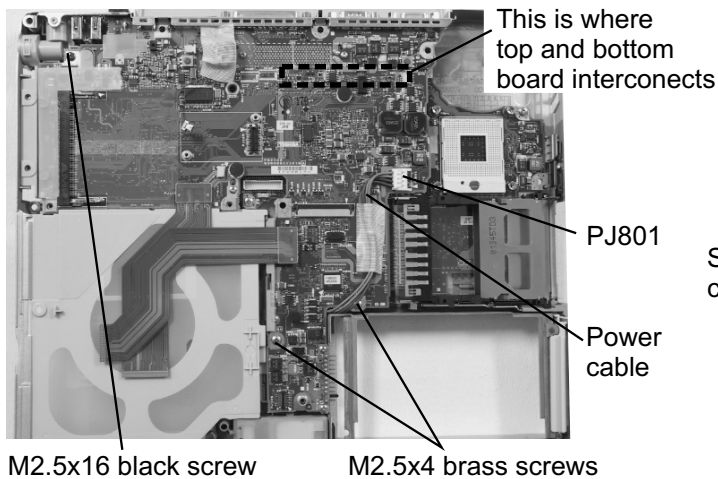
1. Remove the **plastic insulator**.
2. Disconnect the **RTC cable** from **PJ5** on the LED/Bluetooth board.
3. Lift out the **RTC battery**.

LED/BLUETOOTH BOARD REMOVAL

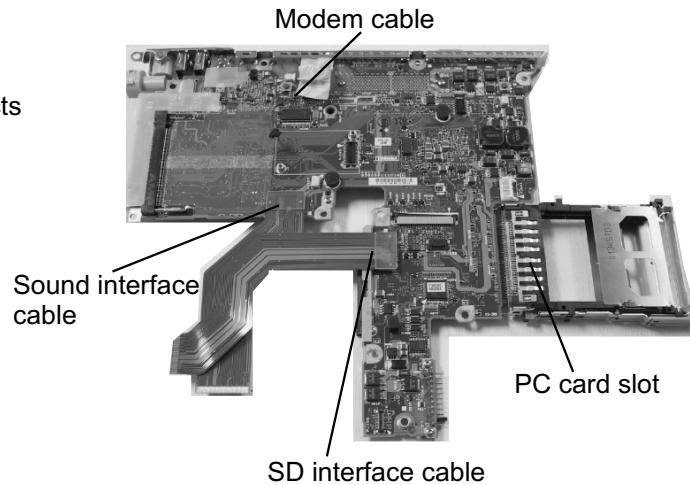


1. Remove **two M2.5x4 brass screws** and **one M2.5x8 silver screw** securing the LED/Bluetooth board.
2. Disconnect the **LED/Bluetooth board** from PJ105 on the top PCB.

TOP PCB REMOVAL



1. Disconnect the **power cable** from **PJ801** on the top PCB.
2. Remove **two M2.5x4 brass screws** and **one M2.5x16 black screw** securing the top PCB.
3. Gently lift up the right side of the top board to disconnect from PJ19 on the top PCB.



4. Remove the **PC card slot** from PJ117 on the top PCB.
5. Disconnect the following cables from the top PCB:
 - Sound interface cable** from **PJ102**
 - SD interface cable** from **PJ103**
 - Modem cable** from **PJ126**

TOSHIBA

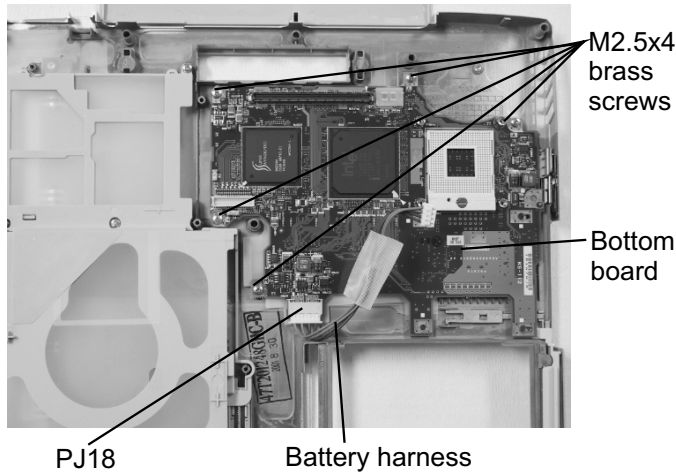
Tough Enough for Today's World.

Download service manual and resetter printer at <http://printer1.blogspot.com>

FIELD REPLACEABLE UNIT DOCUMENTATION

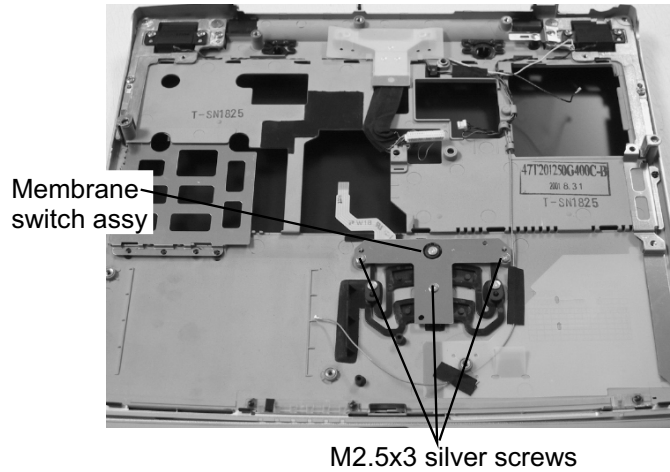
Tecra™ 9000 Series

BOTTOM PCB REMOVAL



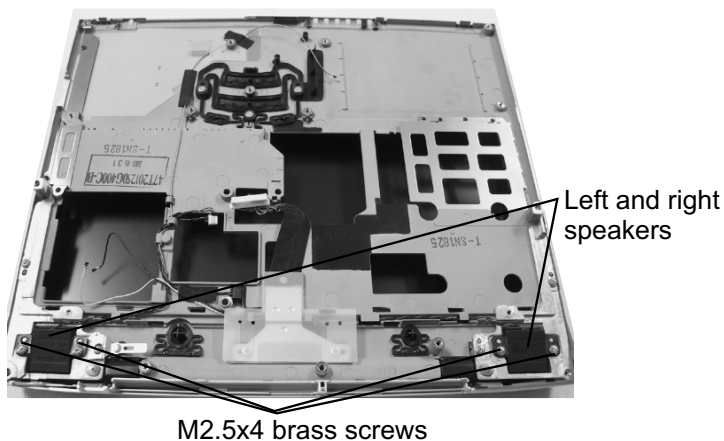
1. Disconnect the **battery harness** from **PJ18** on the bottom PCB.
2. Remove **five M2.5x4 brass screws** securing the bottom PCB.
3. Lift out the **bottom PCB**.

MEMBRANE SWITCH REMOVAL



1. Remove **three M2.5x3 flat head silver screws** securing the membrane switch.
2. Lift out the **membrane switch assembly**.

SPEAKERS REMOVAL



1. Remove **four M2.5x4 brass screws** securing the left and right speakers.
2. Lift out the **speakers**.

TOSHIBA

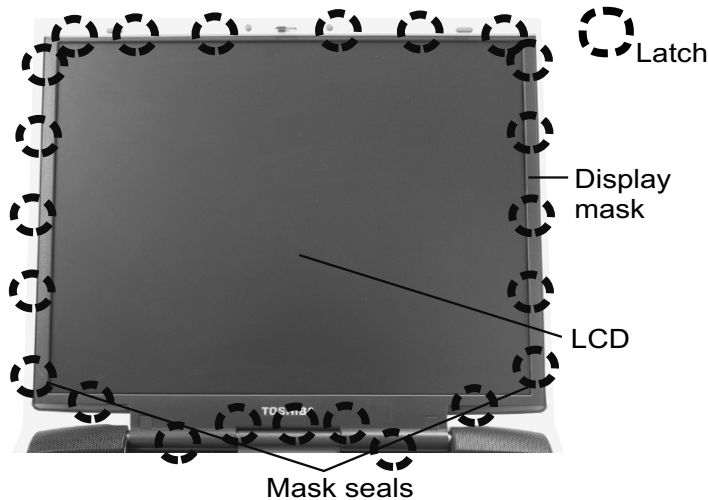
Tough Enough for Today's World.

Download service manual and resetter printer at <http://printer1.blogspot.com>

FIELD REPLACEABLE UNIT DOCUMENTATION

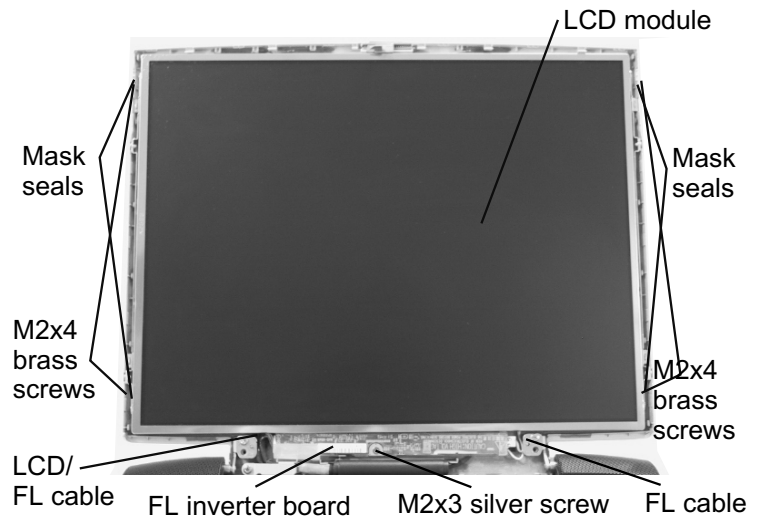
Tecra™ 9000 Series

14.1" DISPLAY MASK REMOVAL



1. Remove **two mask seals** at the bottom corners of the display assembly using a pair of fine-tipped tweezers.
2. Remove **two M2.5x6 flat head brass screws** securing the display mask.
3. There are **23 latches** securing the **display mask**. Carefully insert your fingers between the mask and the LCD panel and pry open the latches starting from the **six top latches**, to the **five latches on each right and left sides**, ending with the **bottom seven latches**.

FL INVERTER AND 14.1" LCD REMOVAL



1. Remove **one M2x2.8 silver screw** securing the FL inverter board.
2. Carefully lift up the **FL inverter board** and disconnect the **LCD/FL cable** from **CN1** and the **FL cable** from **CN2**.
3. Remove **four mask seals** to expose four screws securing the LCD module assembly.
4. Remove **four M2x2.8 brass screws** securing the **LCD module assembly**.
5. Carefully rotate out the top of the **LCD module** enough to access the display cable
6. Peel off the tape securing the LCD/FL cable and disconnect the cable.
7. Remove **four M2x2.8 silver screws** securing the right and left LCD brackets.

TOSHIBA

Tough Enough for Today's World.

Download service manual and resetter printer at <http://printer1.blogspot.com>

Free Manuals Download Website

<http://myh66.com>

<http://usermanuals.us>

<http://www.somanuals.com>

<http://www.4manuals.cc>

<http://www.manual-lib.com>

<http://www.404manual.com>

<http://www.luxmanual.com>

<http://aubethermostatmanual.com>

Golf course search by state

<http://golfingnear.com>

Email search by domain

<http://emailbydomain.com>

Auto manuals search

<http://auto.somanuals.com>

TV manuals search

<http://tv.somanuals.com>