

**TOSHIBA**

Leading Innovation >>>

Guidance for

# AS/400 Print Solution

---

**e-STUDIO520/600/720/850**

**e-STUDIO281c/351c/451c**

**e-STUDIO352/452**

**e-STUDIO202L/232/282**

**e-STUDIO2500c/3500c/3510c**

**e-STUDIO165/205**

**e-STUDIO167/207/237**

**e-STUDIO523/603/723/853**

**e-STUDIO353/453**

**e-STUDIO203L/233/283**

**e-STUDIO2020c/2330c/2820c/  
2830c/3520c/3530c/4520c**

**e-STUDIO5520c/6520c/6530c**

**e-STUDIO283c/353c/453c**

**e-STUDIO205L/255/305/355/455**

**e-STUDIO555/655/755/855**

**e-STUDIO182/212/242**



# Software License Agreement

---

INSTALLING OR OTHERWISE USING THIS SOFTWARE PRODUCT CONSTITUTES YOUR ACCEPTANCE OF THE FOLLOWING TERMS AND CONDITIONS (UNLESS A SEPARATE LICENSE IS PROVIDED BY THE SUPPLIER OF APPLICABLE SOFTWARE IN WHICH CASE SUCH SEPARATE LICENSE SHALL APPLY). IF YOU DO NOT ACCEPT THESE TERMS, YOU MAY NOT INSTALL OR USE THIS SOFTWARE, AND YOU MUST PROMPTLY RETURN THE SOFTWARE TO THE LOCATION WHERE YOU OBTAINED IT.

THE SOFTWARE INSTALLED ON THIS PRODUCT INCLUDES NUMEROUS INDIVIDUAL SOFTWARE COMPONENTS, EACH HAVING ITS OWN APPLICABLE END USER LICENSE AGREEMENT ("EULA"). INFORMATION RELATING TO THE EULAS MAY BE FOUND IN AN ELECTRONIC FILE INCLUDED ON THE USER DOCUMENTATION CD-ROM INCLUDED HEREWITH; HOWEVER, ALL SOFTWARE AND DOCUMENTATION DEVELOPED OR CREATED BY OR FOR TOSHIBA TEC CORPORATION ("TTEC") ARE PROPRIETARY PRODUCTS OF TTEC AND ARE PROTECTED BY COPYRIGHT LAWS, INTERNATIONAL TREATY PROVISIONS, AND OTHER APPLICABLE LAWS.

## **Grant of License**

This is a legal agreement between you, the end-user ("You"), and TTEC and its suppliers. This software, fonts (including their typefaces) and related documentation ("Software") is licensed for use with the system CPU on which it was installed ("System") in accordance with the terms contained in this Agreement. This Software is proprietary to TTEC and/or its suppliers.

TTEC and its suppliers disclaim responsibility for the installation and/or use of this Software, and for the results obtained by using this Software. You may use one copy of the Software as installed on a single System, and may not copy the Software for any reason except as necessary to use the Software on a single System. Any copies of the Software shall be subject to the conditions of this Agreement.

You may not, nor cause or permit any third party to, modify, adapt, merge, translate, reverse compile, reverse assemble, or reverse engineer the Software. You may not use the Software, except in accordance with this license. No title to the intellectual property in the Software is transferred to you and full ownership is retained by TTEC or its suppliers. Source code of the Software is not licensed to you. You will be held legally responsible for any copyright infringement, unauthorized transfer, reproduction or use of the Software or its documentation.

## **Term**

This license is effective until terminated by TTEC or upon your failure to comply with any term of this Agreement. Upon termination, you agree to destroy all copies of the Software and its documentation.

You may terminate this license at any time by destroying the Software and its documentation and all copies.

## **Disclaimer of Warranty**

THIS SOFTWARE IS PROVIDED "AS IS" WITHOUT WARRANTY OF ANY KIND, EITHER EXPRESS OR IMPLIED, INCLUDING, BUT NOT LIMITED TO, THE IMPLIED WARRANTIES OF MERCHANTABILITY, FITNESS FOR A PARTICULAR PURPOSE, TITLE, AND NON-INFRINGEMENT. TTEC AND ITS SUPPLIERS DISCLAIM ANY WARRANTY RELATING TO THE QUALITY AND PERFORMANCE OF THE SOFTWARE. IF THE SOFTWARE PROVES DEFECTIVE, YOU (AND NOT TTEC OR ITS SUPPLIERS) SHALL BE RESPONSIBLE FOR THE ENTIRE COST OF ALL NECESSARY SERVICING, REPAIR OR CORRECTION. TTEC AND ITS SUPPLIERS DO NOT WARRANT THAT THE FUNCTIONS CONTAINED IN THE SOFTWARE WILL MEET YOUR REQUIREMENTS OR THAT THE OPERATION OF THE SOFTWARE WILL BE UNINTERRUPTED OR ERROR FREE.

ALL INFORMATION CONTAINED HEREIN THAT IS PROVIDED BY TTEC AND ITS AFFILIATES PURSUANT TO A EULA IS PROVIDED "AS IS" WITHOUT WARRANTY OF ANY KIND, EITHER EXPRESS OR IMPLIED.

---

### **Limitation of Liability**

IN NO EVENT WILL TTEC OR ITS SUPPLIERS BE LIABLE TO YOU FOR ANY DAMAGES, WHETHER IN CONTRACT, TORT, OR OTHERWISE (EXCEPT PERSONAL INJURY OR DEATH RESULTING FROM NEGLIGENCE ON THE PART OF TTEC OR ITS SUPPLIERS), INCLUDING WITHOUT LIMITATION ANY LOST PROFITS, LOST DATA, LOST SAVINGS OR OTHER INCIDENTAL, SPECIAL OR CONSEQUENTIAL DAMAGES ARISING OUT OF THE USE OR INABILITY TO USE THE SOFTWARE, EVEN IF TTEC OR ITS SUPPLIERS HAVE BEEN ADVISED OF THE POSSIBILITY OF SUCH DAMAGES, NOR FOR THIRD PARTY CLAIMS.

### **U.S. Government Restricted Rights**

The Software is provided with RESTRICTED RIGHTS. Use, duplication or disclosure by the U.S. Government is subject to restrictions set forth in subdivision (b) (3) (ii) or (c) (i) (ii) of the Rights in Technical Data and Computer Software Clause set forth in 252.227-7013, or 52.227-19 (c) (2) of the DOD FAR, as appropriate. Contractor/Manufacturer is TOSHIBA TEC Corporation, 6-78, Minami-cho, Mishima City, Shizuoka, 411-8520, Japan.

### **General**

You may not sublicense, lease, rent, assign or transfer this license or the Software. Any attempt to sublicense, lease, rent, assign or transfer any of the rights, duties or obligations hereunder is void. You agree that you do not intend to, and will not ship, transmit (directly or indirectly) the Software, including any copies of the Software, or any technical data contained in the Software or its media, or any direct product thereof, to any country or destination prohibited by the United States Government. This license shall be governed by the laws of Japan or, at the election of a Supplier of TTEC concerned with a dispute arising from or relating to this Agreement, the laws of the Country designated from time to time by the relevant Supplier of TTEC. If any provision or portion of this Agreement shall be found to be illegal, invalid or unenforceable, the remaining provisions or portions shall remain in full force and effect.

YOU ACKNOWLEDGE THAT YOU HAVE READ THIS LICENSE AGREEMENT AND THAT YOU UNDERSTAND ITS PROVISIONS. YOU AGREE TO BE BOUND BY ITS TERMS AND CONDITIONS. YOU FURTHER AGREE THAT THIS LICENSE AGREEMENT CONTAINS THE COMPLETE AND EXCLUSIVE AGREEMENT BETWEEN YOU AND TTEC AND ITS SUPPLIERS AND SUPERSEDES ANY PROPOSAL OR PRIOR AGREEMENT, ORAL OR WRITTEN, OR ANY OTHER COMMUNICATION RELATING TO THE SUBJECT MATTER OF THIS LICENSE AGREEMENT.

TOSHIBA TEC Corporation, 6-78, Minami-cho, Mishima City, Shizuoka, 411-8520, Japan.

# Trademarks and Copyright

---

## Trademarks

- Copyright permissions regarding screenshots, pictures and descriptions, included in this document, can be obtained from AXIS Communications AB.
- AXIS Communications, AXIS 5570e, AXIS 5570e IPDS SNA and design (the AXIS logo) are either registered trademarks or trademarks of AXIS AB and AXIS Communications AB in Sweden, the European Union, the United States, Japan and other countries.  
All "AXIS 5570e" described henceforth means "AXIS 5570e IPDS SNA".
- AS/400 is a registered trademark of US International Business Machines Corporation.
- Other company names and product names in this manual are the trademarks of their respective companies.

## Copyright

© 2006 - 2010 TOSHIBA TEC CORPORATION All rights reserved

This manual is protected by copyright laws. No part of this manual shall be duplicated or reproduced without the permission of TOSHIBA TEC CORPORATION. TOSHIBA TEC CORPORATION shall not be liable in terms of granting patents for any use of information contained in this manual by third parties.

## Disclaimer Notice

---

The following notice sets out the exclusions and limitations of liability of TOSHIBA TEC CORPORATION (including its employees, agents and sub-contractors) to any purchaser or user ('User') of the e-STUDIO520/600/720/850, e-STUDIO281C/351C/451C, e-STUDIO352/452, e-STUDIO202L/232/282, e-STUDIO2500C/3500C/3510C, e-STUDIO165/205, e-STUDIO167/207/237, e-STUDIO523/603/723/853, e-STUDIO353/453, e-STUDIO203L/233/283, e-STUDIO2020C/2330C/2820C/2830C/3520C/3530C/4520C, e-STUDIO5520C/6520C/6530C, e-STUDIO283C/353C/453C, e-STUDIO205L/255/305/355/455, e-STUDIO555/655/755/855 and e-STUDIO182/212/242 including its accessories, options and bundled software ('Product').

1. The exclusion and limitations of liability referred to in this notice shall be effective to the fullest extent permissible at law. For the avoidance of doubt, nothing in this notice shall be taken to exclude or limit TOSHIBA TEC CORPORATION's liability for death or personal injury caused by TOSHIBA TEC CORPORATION's negligence or TOSHIBA TEC CORPORATION's fraudulent misrepresentation.
2. All warranties, conditions and other terms implied by law are, to the fullest extent permitted by law, excluded and no such implied warranties are given or apply in relation to the Products.
3. TOSHIBA TEC CORPORATION shall not be liable for any loss, cost, expense, claim or damage whatsoever caused by any of the following:
  - use or handling of the Product otherwise than in accordance with the manuals, including but not limited to Operator's Manual, User's Guide, and/or incorrect or careless handling or use of the Product;
  - any cause which prevents the Product from operating or functioning correctly which arises from or is attributable to either acts, omissions, events or accidents beyond the reasonable control of TOSHIBA TEC CORPORATION including without limitation acts of God, war, riot, civil commotion, malicious or deliberate damage, fire, flood, or storm, natural calamity, earthquakes, abnormal voltage or other disasters;
  - additions, modifications, disassembly, transportation, or repairs by any person other than service technicians authorized by TOSHIBA TEC CORPORATION; or
  - use of paper, supplies or parts other than those recommended by TOSHIBA TEC CORPORATION.
4. Subject to paragraph 1, TOSHIBA TEC CORPORATION shall not be liable to Customer for:
  - loss of profits; loss of sales or turnover; loss of or damage to reputation; loss of production; loss of anticipated savings; loss of goodwill or business opportunities; loss of customers; loss of, or loss of use of, any software or data; loss under or in relation to any contract; or
  - any special, incidental, consequential or indirect loss or damage, costs, expenses, financial loss or claims for consequential compensation;

whatsoever and howsoever caused which arise out of or in connection with the Product or the use or handling of the Product even if TOSHIBA TEC CORPORATION is advised of the possibility of such damages.

TOSHIBA TEC CORPORATION shall not be liable for any loss, cost, expense, claim or damage caused by any inability to use (including, but not limited to failure, malfunction, hang-up, virus infection or other problems) which arises from use of the Product with hardware, goods or software which TOSHIBA TEC CORPORATION has not directly or indirectly supplied

The e-STUDIO520/600/720/850, e-STUDIO281C/351C/451C, e-STUDIO352/452, e-STUDIO202L/232/282, e-STUDIO2500C/3500C/3510C, e-STUDIO165/205, e-STUDIO167/207/237, e-STUDIO523/603/723/853, e-STUDIO353/453, e-STUDIO203L/233/283, e-STUDIO2020C/2330C/2820C/2830C/3520C/3530C/4520C, e-STUDIO5520C/6520C/6530C, e-STUDIO283C/353C/453C, e-STUDIO205L/255/305/355/455, e-STUDIO555/655/755/855 and e-STUDIO182/212/242 provides powerful network printing capability with many output finishing options. Now a means exists to use the controller with an IBM AS/400® system.

## About this guide

This guide is for network administrators who are familiar with the IBM AS/400 system. It assumes you are familiar with the software applications used to print documents.

This guide is not designed for digital-copier service technicians or operators. For information on using and maintaining the equipment, refer to the following documents or contact your dealer for support.

- e-STUDIO520/600/720/850, e-STUDIO281C/351C/451C, e-STUDIO352/452, e-STUDIO202L/232/282, e-STUDIO2500C/3500C/3510C, e-STUDIO523/603/723/853, e-STUDIO353/453, e-STUDIO203L/233/283 and e-STUDIO283C/353C/453C: ***Operator's Manual for Basic Functions***
- e-STUDIO2020C/2330C/2820C/2830C/3520C/3530C/4520C, e-STUDIO5520C/6520C/6530C, e-STUDIO205L/255/305/355/455 and e-STUDIO555/655/755/855: ***Copying Guide***
- e-STUDIO165/205, e-STUDIO167/207/237 and e-STUDIO182/212/242: ***Operator's Manual for Copying Functions***

## Conventions

- The term "equipment" in this manual refers to the following models:
  - e-STUDIO520/600/720/850
  - e-STUDIO281C/351C/451C
  - e-STUDIO352/452
  - e-STUDIO202L/232/282
  - e-STUDIO2500C/3500C/3510C
  - e-STUDIO165/205
  - e-STUDIO167/207/237
  - e-STUDIO523/603/723/853
  - e-STUDIO353/453
  - e-STUDIO203L/233/283
  - e-STUDIO2020C/2330C/2820C/2830C/3520C/3530C/4520C
  - e-STUDIO5520C/6520C/6530C
  - e-STUDIO283C/353C/453C
  - e-STUDIO205L/255/305/355/455
  - e-STUDIO555/655/755/855
  - e-STUDIO182/212/242





# Table of Contents

---

Software License Agreement .....	3
Trademarks and Copyright .....	5
Disclaimer Notice .....	6
Preface .....	7
About this guide .....	7
Conventions .....	7
Table of Contents .....	9
<b>1. AXIS Network Print Server .....</b>	<b>11</b>
Overview .....	12
Components .....	12
Finishing options and logical printers .....	13
Installation .....	14
Installation procedure .....	14
Configuration .....	17
Available AXIS firmware version .....	17
Update procedure .....	17
Copier model .....	19
Only PCL available .....	20
Available finisher options .....	21
General settings .....	28
IPDS emulator .....	29
Custom copier driver .....	31
Problem Solving .....	32
Problems and recommended solutions .....	32
Customer service .....	32
<b>2. WorkStation Customization Object for TOSHIBA e-STUDIO .....</b>	<b>33</b>
Overview .....	34
Components .....	34
Finishing options and logical printers .....	34
Installation .....	35
Installation procedure .....	35
Uninstallation .....	40
Uninstallation procedure .....	40
Operation .....	44
Operational procedure .....	44
Print file script .....	45
Appendix .....	47
Stapling specifications .....	47
Printing character size - Reference values .....	48
<b>Glossary .....</b>	<b>49</b>
Definitions of Terms .....	49



# 1. AXIS Network Print Server

# Overview

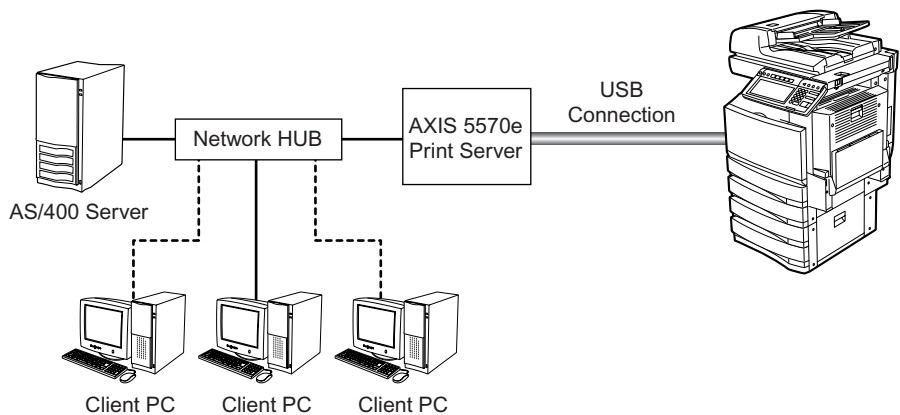
---

## Components

The components of the AS/400® Printing Solution are:

- AS/400 server
- Your equipment
- USB cable to connect the AXIS 5570e Print Server and your equipment
- AXIS 5570e Print Server
- Client PC workstation
- Custom Config file (Config\_landscape) TOSHIBA TEC Products

The configuration diagram illustrates the relationship among these components.



*AS/400 Printing Solution components*

Print output generated by the AS/400 server passes through the AXIS 5570e Print Server that acts as a converter from IPDS into PCL print commands, which are then sent to your equipment. For more information about AXIS 5570e Print Server, go to the AXIS COMMUNICATIONS of [www.axis.com](http://www.axis.com).

A client PC can also send commands directly to your equipment.

---

## Finishing options and logical printers

TOSHIBA offers several finishing options in addition to standard print commands coming from the AS/400. For example, stapling and hole punching are finishing options.

The finishing options are grouped in several preconfigured sets, which you associate with up to eight logical printers.

- NOTE:
- Any finisher options are not supported in e-STUDIO165/205 and e-STUDIO167/207/237.

# Installation

---

## Installation procedure

Install the AS/400 printing solution in two steps:

1. Set up the hardware
2. Set up the AS/400 printer

### Step 1: Set up the hardware

---

- NOTE:
- The controller can be directly connected to the AS/400 network at the same time. Thus, PCL-based or raw print jobs can be sent to it via the network, bypassing the AXIS 5570e Print Server device.

- 1. Following the product installation instructions that came with the AXIS 5570e Print Server, setup this device.**
- 2. Connect the AXIS 5570e Print Server and your equipment using the USB cable.**
- 3. Press the TEST button on the AXIS 5570e Print Server to print a test page to your equipment.**
- 4. Connect the AXIS 5570e Print Server to the network hub.**

## Step 2: Set up the AS/400 printer

On the AS/400, use the CRTDEVPRT command to configure the print settings according to the following table:

### AS/400 Print settings

Setting Name	Value
Device description	Unique description, such as TOSHIBA
Device class	*LAN
Device type	*IPDS
Device model	0
LAN attachment	*IP
Port number	e.g. 5001
Font identifier	11
Remote location	IP address of AXIS 5570e

All other settings can be left unchanged.

NOTE: • If you experience any problems, press F1 for help.

```

Create Device Desc (Printer) (CRTDEVPRT)

Type choices, press Enter.

Device description . . . . . TOSHIBA      Name
Device class . . . . . *LAN             *LCL, *RMT, *VRT, *SNPT, *LAN
Device type . . . . . *IPDS             3287, 3812, 4019, 4201...
Device model . . . . . 0                 0, 1, 2, 3, 4, 10, 13, 301...
LAN attachment . . . . . *IP             *LEXLINK, *IP, *USRDFN
Switched line list . . . . . _____ Name
      + for more values _____
LAN remote adapter address . . . . . _____ 000000000001-FFFFFFFFFE
Adapter type . . . . . *INTERNAL         *INTERNAL, *EXTERNAL
Adapter connection type . . . . . *PARALLEL *PARALLEL, *SERIAL
Emulated twinaxial device . . . . . _____ 3812, 5219, 5224, 5256
Advanced function printing . . . . . *YES   *NO, *YES
AFP attachment . . . . . *WSC           *WSC, *APPC
Port number . . . . . 5001              0-65535
Switch setting . . . . . _____      0, 1, 2, 3, 4, 5, 6
Local location address . . . . . _____ 00-FE

More...
F3=Exit  F4=Prompt  F5=Refresh  F12=Cancel  F13=How to use this display
F24=More keys
Parameter DEVD required.
MA a A 18/041

```

Sample AS/400 Printer Setup Screen

### Configuring the AXIS 5570e

Follow the instructions below to configure your AXIS 5570e for AS/400 IPDS over PPR/PPD printing using a standard Web browser:

1. Start a Web browser and enter the IP address or the host name of the AXIS 5570e in the location field. Press Enter. The internal Web pages of the AXIS 5570e will appear.

- 
- NOTE:
- To protect the admin pages and the Configuration Wizard from unauthorized use, enter a password (by default set to pass) in the Root Password field under Admin General Settings.
  - Use the same port number when creating the print device (page 15).

**Note for IPDS printing:**

In the Configuration Wizard, you can choose between PCL or PostScript printing. Choose PCL for Printer Driver. PostScript is not available.

- 2. Click the Configuration Wizard for IBM sessions button.**
- 3. Delete the pre-configured PPR/PPD session. Pre-configured session is not available for TOSHIBA e-STUDIO series.**
- 4. Click the Add Session button. This will start the Configuration Wizard which is a step-by-step guide through the required configuration settings.**

**Verifying the communication link (AS/400)**

Follow the instructions below to verify the communication to the AXIS 5570e:

- 1. Type WRKCFGSTS \*DEV <Device description Name> on the AS/400 command line and press Enter. The previously created printer device will be displayed. The status of the printer device should be VARIED OFF.**
- 2. Vary on the printer device by typing 1 in the Opt field. Press Enter.**
- 3. Press F5 to refresh the display. The printer device should now be VARIED ON.**
- 4. Start the printer writer by typing STRPRTWTR <Device description Name> on the AS/400 command line. Press Enter.**
- 5. Press F5 to refresh the display. The printer device should now be ACTIVE/WRITER.**
- 6. Direct a printout to this printer device. A successful printout verifies the communication link between the AS/400 and the AXIS 5570e.**

- NOTE:
- If the setup fails, refer to the troubleshooting section in the AXIS 5570e User's Manual, on [www.axis.com](http://www.axis.com)



# Configuration

---

## Available AXIS firmware version

Use the production release version or service release version given in the following table when using TOSHIBA MFP.

All official firmware releases for the AXIS 5570e are available on AXIS website.

TOSHIBA MFP	Production release version	Service release version
e-STUDIO520/600/720/850	7.08 or later	7.06.04 or later
e-STUDIO523/603/723/853		
e-STUDIO281C/351C/451C		
e-STUDIO352/452	7.08 or later	7.08.2 or later
e-STUDIO353/453		
e-STUDIO202L/232/282		
e-STUDIO203L/233/283		
e-STUDIO2500C/3500C/ 3510C	7.10 or later	7.08.2 or later
e-STUDIO165/205		
e-STUDIO167/207/237		
e-STUDIO2020C/2330C/ 2820C/2830C/3520C/3530C/ 4520C		
e-STUDIO5520C/6520C/ 6530C		
e-STUDIO283C/353C/453C		

[http://www.axis.com/techsup/prtsrv/axis\\_5570e/firmware.php](http://www.axis.com/techsup/prtsrv/axis_5570e/firmware.php)

Use AXIS 5570e IPDS printing when using TOSHIBA MFP.

## Update procedure

Update procedure of the AXIS 5570e firmware using FTP:

- 1. Open a Windows command prompt.**
- 2. Connect to the print server using ftp: Type ftp <ip address>**
- 3. Enter the user and password: (Default user: root Default password pass) and press Enter.**
- 4. Change to binary transfer mode: type bin and press Enter.**
- 5. Type hash and press Enter.**
- 6. Type put <filename> FLASH. A stream of hash marks will appear.**
- 7. The message "Transfer complete. Flash programming finished OK. " will appear.**

---

**8. The print server will restart in five seconds running the new software.**

```
Microsoft Windows XP [Version 5.1.2600]
(C) Copyright 1985-2001 Microsoft Corp.

C:\>ftp 172.16.101.199
Connected to 172.16.101.199.
220 AXIS 5570e FTP Network Print Server V7.06.04.RC1 Dec 22 2005 ready.
User (172.16.101.199:(none)): root
331 User name ok, need password
Password:
230 User logged in
ftp> bin
200 TYPE set to I.
ftp> hash
Hash mark printing On ftp: (2048 bytes/hash mark) .
ftp> put axis5570e.bin FLASH
200 PORT command successful.
150 Opening data connection for FLASH (172.16.101.149,4,69), (mode binary).
.....
221-Transfer complete. flash programming finished OK.
Starting new software...
221 Reset, closing connection.
ftp: 1762453 bytes sent in 10.23Seconds 172.22Kbytes/sec.
ftp> _
```

Update procedure of the config file:

- 1. Get the config file by FTP. Open a Windows command prompt and enter the following:**  
ftp <ip address>  
default user name root  
default password pass  
get config  
bye
- 2. Update the custom driver parameters from the config file; the parameters needed for the custom driver begin with DC General Menu and end with DC PCL Copies.**
- 3. Save the file as, e.g. my\_template.**
- 4. Upload 'my\_template' to the print server by FTP.**  
ftp <IP address>  
default user name root  
default password pass  
put my\_template CONFIG  
bye

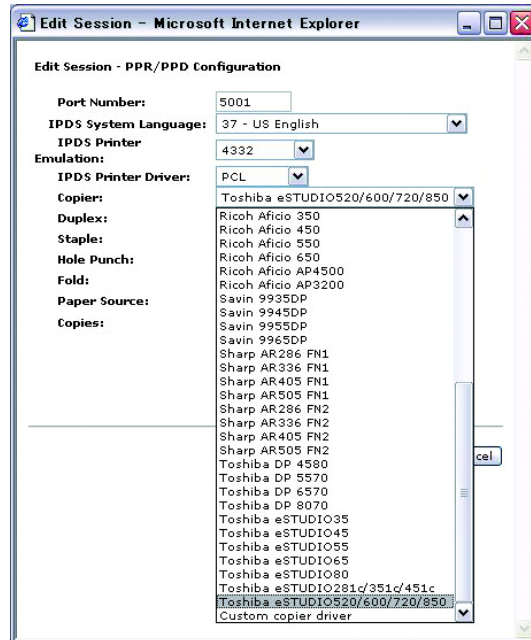
---

## Copier model

When printing portrait data, select an appropriate copier model, e.g. Toshiba eSTUDIO520/600/720/850 or Toshiba eSTUDIO281C/351C/451C.

When printing landscape data, select Custom copier driver for Copier model.

 P.31 "Custom copier driver"



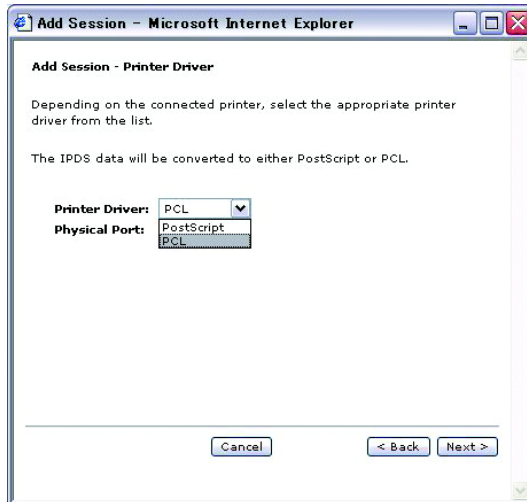
### NOTE:

- In using e-STUDIO167/207/237, choose e-STUDIO165/205.
- In using e-STUDIO523/603/723/853, choose e-STUDIO520/600/720/850.
- In using e-STUDIO353/453, choose e-STUDIO352/452.
- In using e-STUDIO2020C/2330C/2820C/2830C/3520C/3530C/4520C, choose e-TUDIO2500C/3500C/3510C.
- In using e-STUDIO5520C/6520C/6530C, choose e-STUDIO2500C/3500C/3510C.
- In using e-STUDIO283C/353/453C, choose e-STUDIO281C/351C/451C.

---

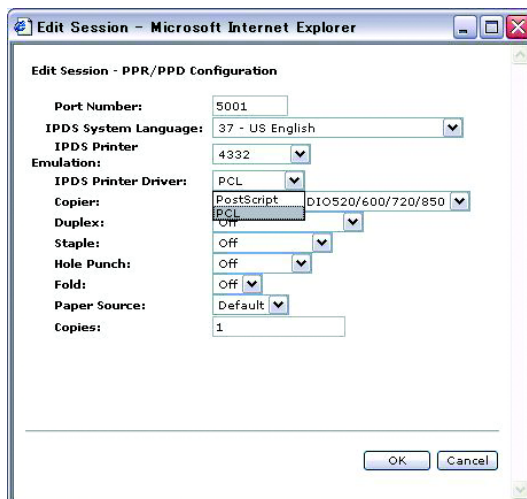
## Only PCL available

In the Configuration Wizard for IBM sessions, select PCL for Printer Driver. PostScript is not available.



Edit Session:

Only PCL is available for IPDS Printer Driver under Edit Session. PostScript is not available.



---

## Available finisher options

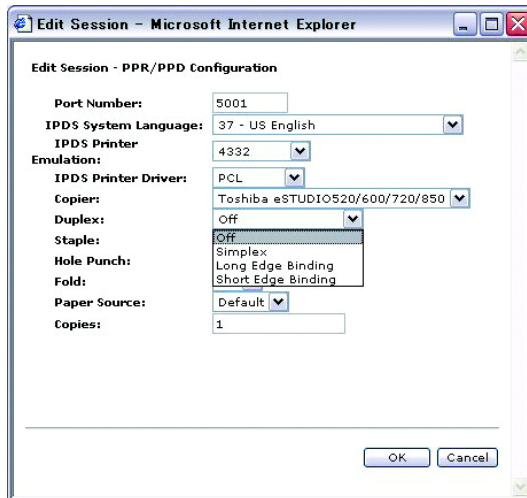
The following options are available for the settings of Logical Printers or Edit Session.

### Duplex:

---

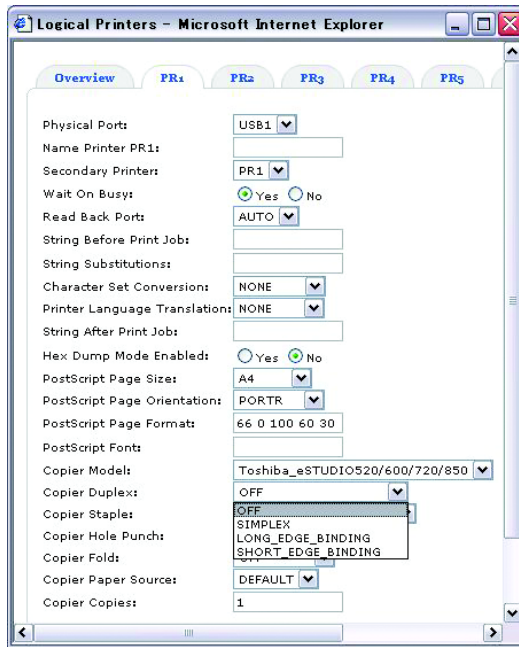
Edit Session:

Long Edge Binding and Short Edge Binding are available for Duplex under Edit Session.



Logical Printers:

LONG\_EDGE\_BINDING and SHORT\_EDGE\_BINDING are available for Copier Duplex under Logical Printers.



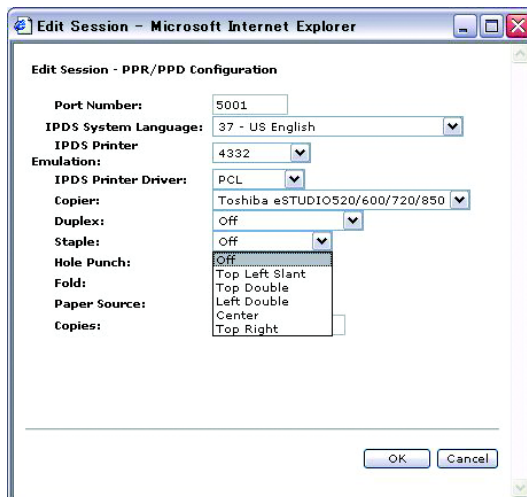
## Staple:

Edit Session:

Top Left Slant, Top Double, Left Double and Top Right are available for Staple under Edit Session.

Center is not available.

Selecting Center staples at the center of the paper, not in a book format.



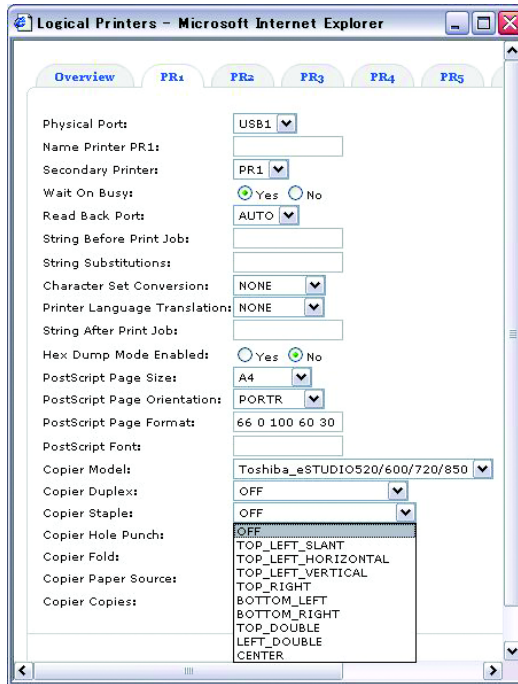
---

Logical Printers:

TOP\_LEFT\_SLANT, TOP\_RIGHT, TOP\_DOUBLE and LEFT\_DOUBLE are available for Copier Staple under Logical Printers.

TOP\_LEFT\_HORIZONTAL, TOP\_LEFT\_VERTICAL, BOTTOM\_LEFT, BOTTOM\_RIGHT and CENTER are not available.

Selecting CENTER staples at the center of the paper, not in a book format.



- NOTE:
- e-STUDIO165/205 and e-STUDIO167/207/237 are not supporting the Staple Option.

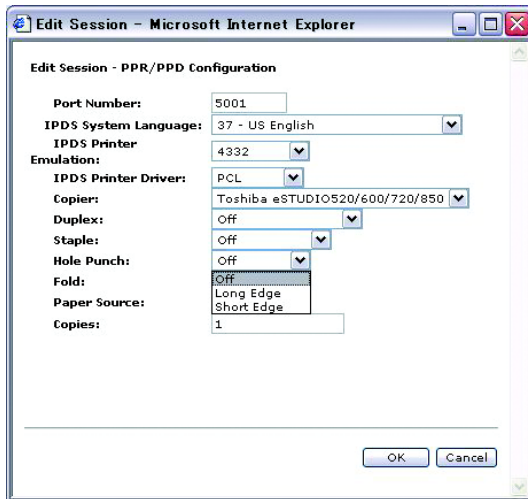
---

## Hole Punch:

---

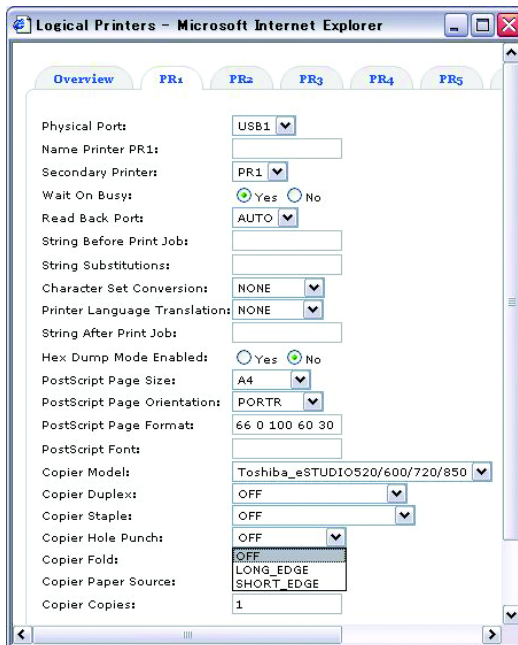
Edit Session:

Long Edge and Short Edge are available for Hole Punch under Edit Session.



Logical Printers:

LONG\_EDGE and SHORT\_EDGE are available for Copier Hole Punch under Logical Printers.



NOTE: • e-STUDIO165/205 and e-STUDIO167/207/237 are not supporting the Hole Punch Option.

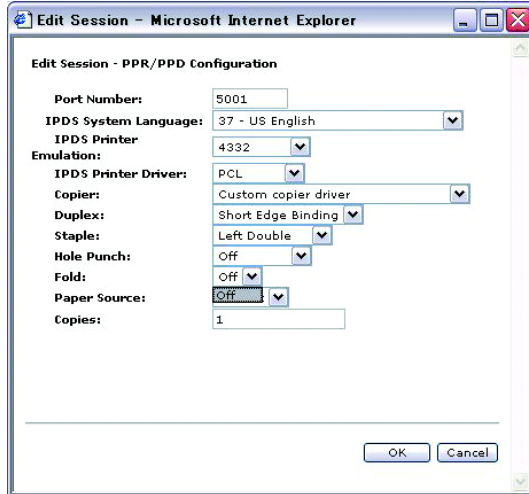


---

## Fold:

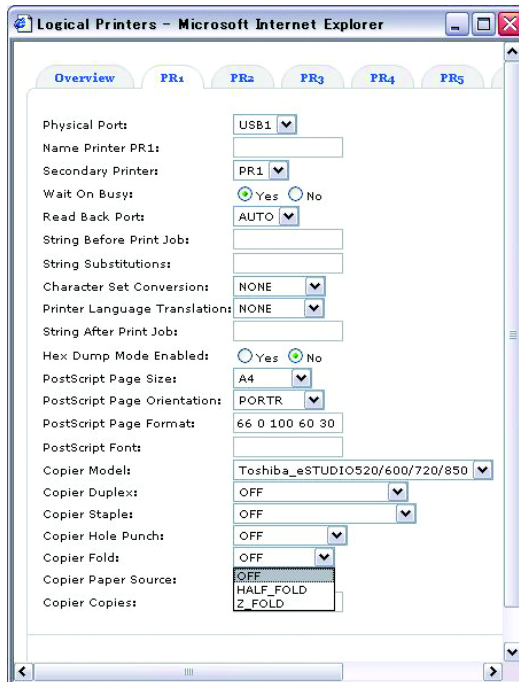
Fold option is not available.

Edit Session:



Logical Printers:

HALF\_FOLD and Z\_FOLD are not available for Copier Fold under Logical Printers.



---

## Paper Source:

---

Default and 1-4 are available for Paper Source.

Default: Auto select

1: Upper Cassette

2: Lower Cassette

3: 1st Pedestal or Large Capacity Feeder

4: 2nd Pedestal

Edit Session:

**Edit Session - PPR/PPD Configuration**

Port Number: 5001

IPDS System Language: 37 - US English

IPDS Printer: 4332

Emulation: PCL

IPDS Printer Driver: Toshiba eSTUDIO520/600/720/850

Copiers: Off

Duplex: Off

Staple: Off

Hole Punch: Off

Fold: Off

Paper Source: Default

Copies: Default

1

2

3

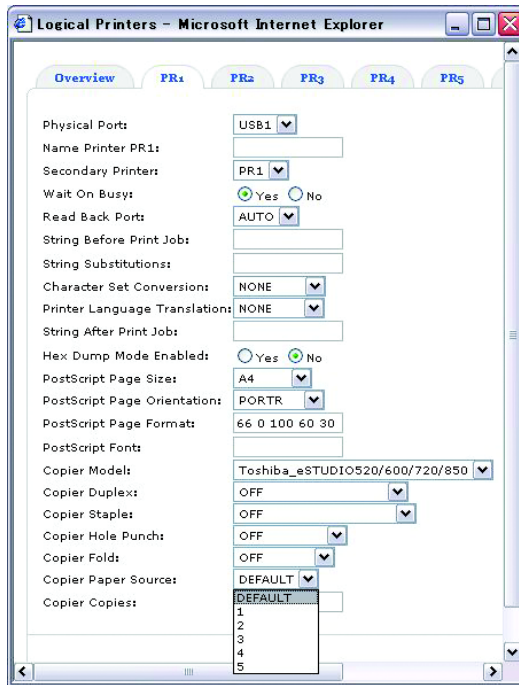
4

OK Cancel

---

## Logical Printers:

5 is not available for Copier Paper Sources under Logical Printers.



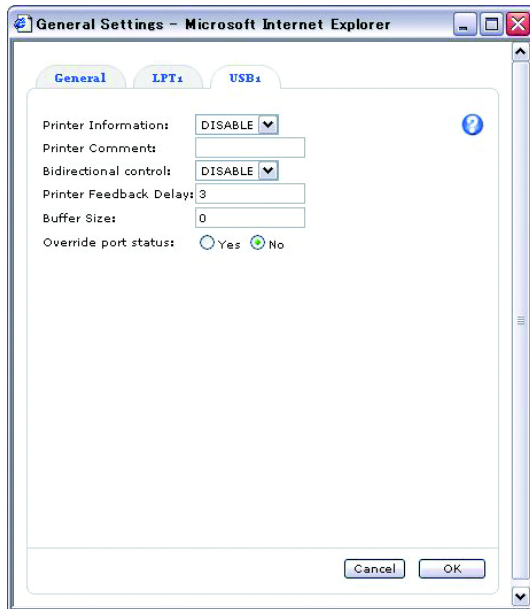
## Copies:

The Copies option is for selecting the number of copies.

---

## General settings

Select DISABLE for Printer Information and Bidirectional control if extra data, which is specified as "PAGECOUNT", is printed.



---

## IPDS emulator

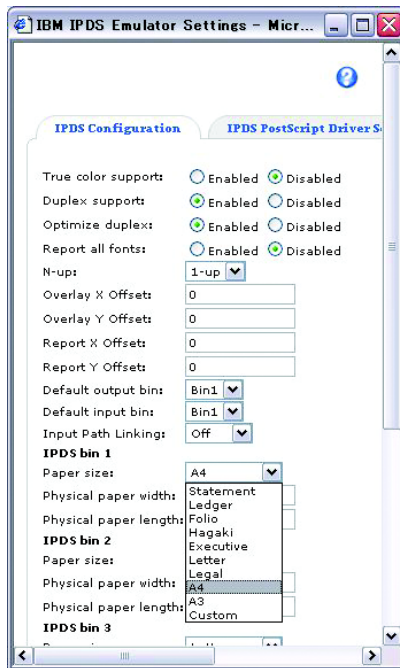
IPDS bin under the IPDS Configuration tab is used for setting the paper size. Statement, Ledger, Folio, Hagaki, Letter, Legal, A4 and A3 are available. Executive and Custom are not available.

- NOTE:
- Statement and Hagaki are not supported in e-STUDIO165/205 and e-STUDIO167/207/237.

PostScript Page Size, PostScript Page Orientation, PostScript Page Format and PostScript Page Font are not available under Logical Printers.

N-up under the IPDS Configuration tab is not available.

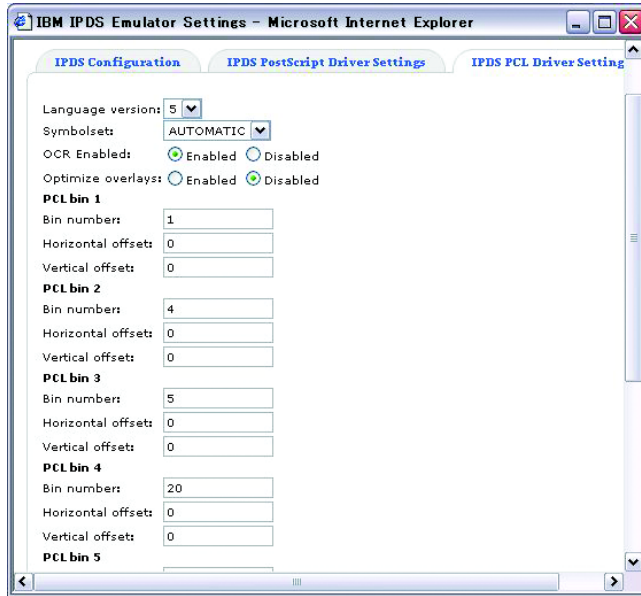
IPDS Configuration:



---

For PCL Bin number, the available value for TOSHIBA MFP is as follows:

- 1: Upper
- 2: Bypass
- 4: Lower
- 5: Pedestal Upper or Large Capacity Feeder
- 7: Auto
- 21: Pedestal Lower



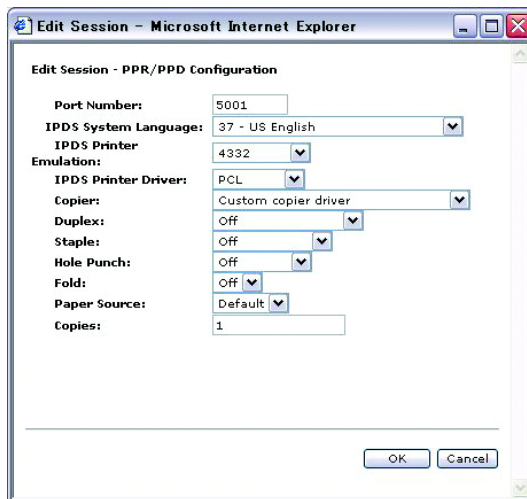
---

## Custom copier driver

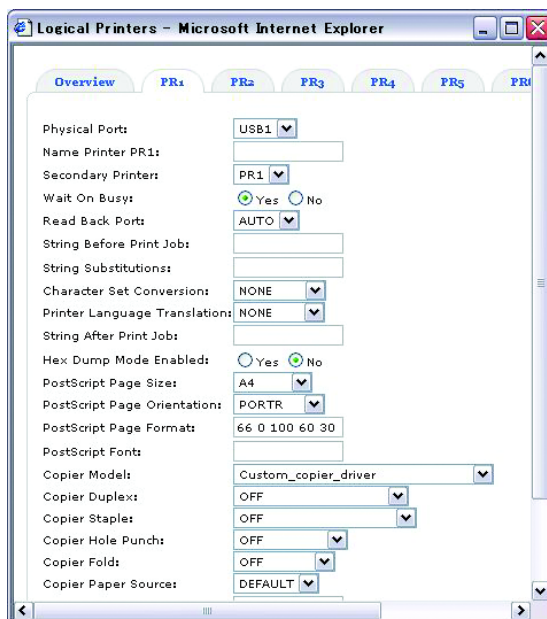
When you print landscape data with some finisher options enabled, you may need to use the Custom Copier Driver for correct output. Obtain the information about the Custom copier driver functionality from [AXIS COMMUNICATIONS](#) web site. When you use the Custom Copier Driver, select "config\_landscape" for the PCL config setting.

- NOTE:
- When you use the Custom copier driver, the printing condition is the same when only PCL and available finisher options can be selected.

Select Custom copier driver for Copier under Edit Session.



Select Custom\_copier\_driver for Copier Model under Logical Printer.



# Problem Solving

---

## Problems and recommended solutions

The following table provides suggestions for resolving printing problems.

Problem	Recommended solution
The finishing option needed for the current job did not occur.	<ul style="list-style-type: none"><li>• Check the Custom Config file currently loaded</li><li>• Check if the print queue on the AS/400 is configured to use the correct port for the logical printer with the desired finishing option</li></ul>
Document does not print	<ul style="list-style-type: none"><li>• Make sure both the controller and the AXIS 5570e Print Server are powered on and online</li><li>• Check the cable connection. Print a test page by pressing the TEST button on the AXIS 5570e Print Server</li><li>• Ensure both the controller and the AXIS 5570e Print Server are configured with the TCP/IP protocol</li><li>• Make sure the print queue on the AS/400 is configured to use the current IP address of the AXIS 5570e Print Server. Remember, it is recommended that a static IP address is assigned to the AXIS 5570e Print Server device</li><li>• Restart the controller and/or the AXIS 5570e Print Server if necessary</li></ul>
AXIS 5570e Print Server cannot be discovered	<ul style="list-style-type: none"><li>• Check configuration according to AXIS 5570e Print Server guide</li><li>• Make sure the AXIS 5570e Print Server is configured with the TCP/IP protocol</li></ul>

## Customer service

For help with AXIS 5570e Print Server questions, go to the AXIS COMMUNICATIONS section of [www.axis.com](http://www.axis.com).



## **2. WorkStation Customization Object for TOSHIBA e-STUDIO**

# Overview

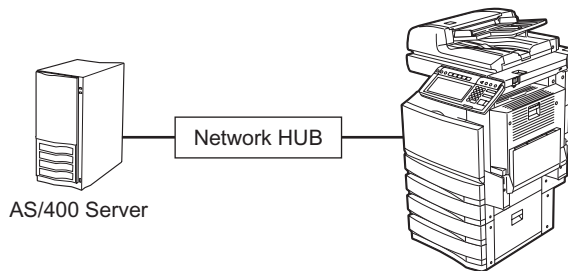
---

## Components

The components of the AS/400® Printing Solution are:

- AS/400 Server OS version 5.2 or later (The latest PTF is recommended)
- Your equipment (See *NOTE below.*)
- WorkStation Customization Object for TOSHIBA e-STUDIO

The configuration diagram illustrates the relationship among these components.



*AS/400 Printing Solution components*

Print data generated with AS/400 can be printed out from a TOSHIBA MFP by relating them with OUTQ which was set up with the WorkStation Customization Object for TOSHIBA e-STUDIO.

- NOTE:
- The WorkStation Customization Object for TOSHIBA e-STUDIO does not support the following models:
    - e-STUDIO281C/351C/451C
    - e-STUDIO2500C/3500C/3510C

## Finishing options and logical printers

TOSHIBA offers several finishing options in addition to standard print commands coming from the AS/400. For example, stapling is a finishing option.

# Installation

---

## Installation procedure

Before installing the WorkStation Customization Object for TOSHIBA e-STUDIO, configure the system environments as follows:

- Set up AS/400 Server under the environment that allows you to use printing functions.
- Set up a TOSHIBA MFP under an environment that allows you to use it in a network.
- Connect the AS/400 Server and the TOSHIBA MFP with a LAN cable.

### Step 1: Installing WorkStation Customization Object for TOSHIBA e-STUDIO

---

This section describes how to install the WorkStation Customization Object for TOSHIBA e-STUDIO.


- 1. Mount a product CD into a CD-ROM drive.**
- 2. Login as a user with QSECOFR authority.**
- 3. Execute a command [LODRUN] + [F4] and then specify the CD-ROM drive where you mounted the product CD.**

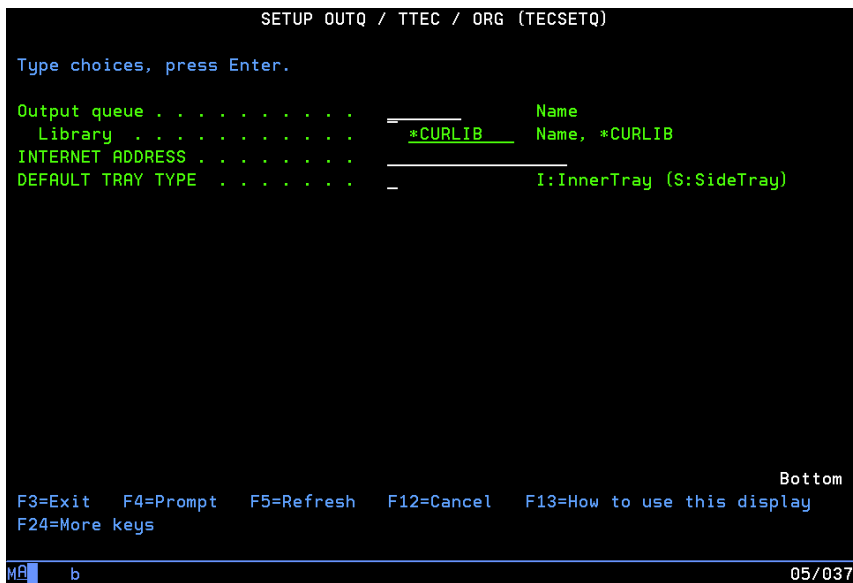
```
Load and Run (LODRUN)
Type choices, press Enter.
Device . . . . . > OPT01_____ Name, *TAP, *DKT, *OPT
Directory . . . . . / _____
Bottom
F3=Exit  F4=Prompt  F5=Refresh  F12=Cancel  F13=How to use this display
F24=More keys
MAI b 05/042
```

---

#### 4. The setting screen for OUTQ appears as the installation is executed. Specify the name of OUTQ (maximum 7 bytes) to be used, its library, the IP address of the printer and default tray type\*. Then press the execution key.

\* default tray type

- e-STUDIO5520C/6520C/6530C  
Enter "I" (InnerTray) or "S" (SideTray). If you use both of them, enter one, install "WorkStation Customization Object for TOSHIBA e-STUDIO" and then register the other when setting it up. For details of the setting up, see the following page:  
 P.37 "Step 2: Setting up WorkStation Customization Object for TOSHIBA e-STUDIO"
- Other models  
Enter "I" (InnerTray).



```
SETUP OUTQ / TTEC / ORG (TECSETQ)



Type choices, press Enter.

Output queue . . . . . _____ Name
Library . . . . . _____ *CURLIB Name, *CURLIB
INTERNET ADDRESS . . . . . _____
DEFAULT TRAY TYPE . . . . . _____ I:InnerTray (S:SideTray)

Bottom
F3=Exit F4=Prompt F5=Refresh F12=Cancel F13=How to use this display
F24=More keys

MA b 05/037
```

#### 5. The installation is completed.

- The installation is properly completed unless any error messages appear. You can go to the following page because in this case the next step "Setting up WorkStation Customization Object for TOSHIBA e-STUDIO" is also completed:  
 P.38 "Step 3: Starting up auto assign (resident) program"
- An error message appears when the specified OUTQ name already exists or OUTQ was not generated because a parameter value is in error.
- If an error message appears or you stopped the command by pressing [F12] or [F3], go to the following page:  
 P.37 "Step 2: Setting up WorkStation Customization Object for TOSHIBA e-STUDIO"

---

## Step 2: Setting up WorkStation Customization Object for TOSHIBA e-STUDIO

---

This section describes how to set up the WorkStation Customization Object for TOSHIBA e-STUDIO.

1. Login as a user with QSECOFR authority.
2. Execute the command below to add a library "WTEC02" to the top of the library list.  
ADDLIB WTEC02
3. Execute a command [TECSETQ] + [F4]. Then specify the name of OUTQ (maximum 7 bytes) to be used, its library, the IP address of the printer and default tray type\*. Then press the execution key.

**\* default tray type**

- e-STUDIO5520C/6520C/6530C  
Enter "I" (InnerTray) or "S" (SideTray). If you use both of them, enter one, set up "WorkStation Customization Object for TOSHIBA e-STUDIO" and then set it up again for registering the other.
- Other models  
Enter "I" (InnerTray).

```
SETUP OUTQ / TTEC / ORG (TECSETQ)

Type choices, press Enter.

Output queue . . . . . _____ Name
Library . . . . . _____ *CURLIB Name, *CURLIB
INTERNET ADDRESS . . . . . _____
DEFAULT TRAY TYPE . . . . . _____ I:InnerTray (S:SideTray)

Bottom
F3=Exit F4=Prompt F5=Refresh F12=Cancel F13=How to use this display
F24=More keys

MA b 05/037
```

### 4. The setup is completed.

- The setup is properly completed unless any error messages appear.
- An error message appears when the specified OUTQ name already exists or OUTQ was not generated because a parameter value is in error.
- If an error message appears or you stopped a command by pressing [F12] or [F3], execute the command [TECSETQ] + [F4] again.

---

### Step 3: Starting up auto assign (resident) program

---

This section describes how to start up auto assign (resident) program.

- NOTE: • It is recommended to load the auto assign (resident) program into IPL.

#### 1. Login as a user with QSECOFR authority.

#### 2. Execute the command below to add a library "WTEC02" to the top of the library list.

```
ADDLIB WTEC02
```

#### 3. Execute a command [STRTECPRT] + [F4]. Then select the name of OUTQ that you specified at the installation or setup, a job queue to use and its library. Then press the execution key.

- NOTE: • If you use a job queue and the library at their initial values, this program will run within QBATCH.

```
Start TEC Printer (STRTECPRT)
Type choices, press Enter.
Output queue . . . . . _____ Name
Job queue . . . . . *JOB_____ Name, *JOB
Library . . . . . *LIBL_____ Name, *LIBL, *CURLIB

Bottom
F3=Exit F4=Prompt F5=Refresh F12=Cancel F13=How to use this display
F24=More keys
MA b 05/037
```

#### 4. The program is started up.

- Execute a command [WRKACTJOB] to display the list. If the status of this program is displayed as "DEQA" in the list, the program is properly started up.
- If the name of OUTQ to be monitored or a job queue to be used is incorrect, the status of this program is displayed as "MSGW" in the list. In this case, confirm the message and then execute the command [STRTECPRT] + [F4] again.

```
Work with Active Jobs S65AA1FB
07/10/09 13:34:24
CPU %: .9 Elapsed time: 00:00:08 Active jobs: 186

Type options, press Enter.
 2=Change 3=Hold 4=End 5=Work with 6=Release 7=Display message
 8=Work with spooled files 13=Disconnect ...

Opt Subsystem/Job User Type CPU % Function Status
--- ENG2924 QSYS SBS .0
--- E2924BB1 PGMR20ENG INT .8 CMD-WRKACTJOB RUN
--- QBATCH QSYS SBS .0
--- TEC1 PGMR20ENG BCH .0 PGM-TTEC000 DEQW
--- QCMN QSYS SBS .0
--- QCTL QSYS SBS .0
--- QSYSSCD QPGMR BCH .0 PGM-QEZSCNEP EVTW
--- QINTER QSYS SBS .0
--- QPADEV000B SSL21 INT .0 PGM-@SSLSET DSPW
More...

Parameters or command
==>
F3=Exit F5=Refresh F7=Find F10=Restart statistics
F11=Display elapsed data F12=Cancel F23=More options F24=More keys

MA b 13/002
```

# Uninstallation

## Uninstallation procedure

### Step 1: Uninstalling WorkStation Customization Object for TOSHIBA e-STUDIO

1. Execute a command [WRKACTJOB] and then select a resident OUTQ monitoring program. Then enter option "4". Now the resident program exits.

NOTE: • Turn the power of the printer to be used OFF before starting uninstallation; otherwise the program will exit in the middle of the uninstallation.

```
Work with Active Jobs S65AA1FB
07/10/09 13:55:36
CPU %: .5 Elapsed time: 00:21:20 Active jobs: 180

Type options, press Enter.
2=Change 3=Hold 4=End 5=Work with 6=Release 7=Display message
8=Work with spooled files 13=Disconnect ...

Opt Subsystem/Job User Type CPU % Function Status
---
ENG2924 QSYS SBS .0
+E2924BB1 PGMR20ENG INT .0 CMD-WRKACTJOB RUN
QBATCH QSYS SBS .0 DEQW
4_ TEC1 PGMR20ENG BCH .0 PGM-TTEC000 DEQW
---
QCHN QSYS SBS .0 DEQW
QCTL QSYS SBS .0 DEQW
QSYSSCD QPGMR BCH .0 PGM-QEZSCNEP EVTW
QINTER QSYS SBS .0 DEQW
QPADEV000B SSL21 INT .0 PGM-@SSLSET DSPW
More...

Parameters or command
==>
F3=Exit F5=Refresh F7=Find F10=Restart statistics
F11=Display elapsed data F12=Cancel F23=More options F24=More keys

MA b A 13/002
```



---

## 2. Execute a command [DLTOUTQ OUTQ(library name / OUTQ name\*1)] to delete the OUTQ specified at the installation.

\*1: It shall be the OUTQ name specified at the installation or the setup.

```
MAIN OS/400 Main Menu System: S65AA1FB
Select one of the following:
  1. User tasks
  2. Office tasks
  3. General system tasks
  4. Files, libraries, and folders
  5. Programming
  6. Communications
  7. Define or change the system
  8. Problem handling
  9. Display a menu
 10. Information Assistant options
 11. Client Access/400 tasks
 90. Sign off
Selection or command
==> DLTOUTQ OUTQ(XXXLIB/TEC1)
-----
F3=Exit F4=Prompt F9=Retrieve F12=Cancel F13=Information Assistant
F23=Set initial menu
MA b A 20/007
```

## 3. Execute a command [ENDWTR OUTQ name\*1 01\*IMMED] to disconnect the printer.

\*1: It shall be the OUTQ name specified at the installation or the setup.

- 
- NOTE:
- The part "01" after the OUTQ name shall be changed from "01" through "07" as you repeat this command seven times.

```
MAIN OS/400 Main Menu System: S65AA1FB
Select one of the following:
  1. User tasks
  2. Office tasks
  3. General system tasks
  4. Files, libraries, and folders
  5. Programming
  6. Communications
  7. Define or change the system
  8. Problem handling
  9. Display a menu
 10. Information Assistant options
 11. Client Access/400 tasks
 90. Sign off
Selection or command
==> ENDWTR TEC101 *IMMED
F3=Exit F4=Prompt F9=Retrieve F12=Cancel F13=Information Assistant
F23=Set initial menu
MA b A 20/007
```

#### 4. Execute a command [WRKOUTQ OUTQ name\*1\*] to confirm that no spool remains.

\*1: It shall be the OUTQ name specified at the installation or the setup.

```
MAIN OS/400 Main Menu System: S65AA1FB
Select one of the following:
  1. User tasks
  2. Office tasks
  3. General system tasks
  4. Files, libraries, and folders
  5. Programming
  6. Communications
  7. Define or change the system
  8. Problem handling
  9. Display a menu
 10. Information Assistant options
 11. Client Access/400 tasks
 90. Sign off
Selection or command
==> WRKOUTQ TEC1*_
F3=Exit F4=Prompt F9=Retrieve F12=Cancel F13=Information Assistant
F23=Set initial menu
MA b A 20/020
```

If "Files" is a value other than "0" and also there are remaining spools, select option "5" to delete the remaining spools.

```
Work with All Output Queues

Type options, press Enter.
2=Change  3=Hold  4=Delete  5=Work with  6=Release  8=Description
9=Work with Writers  14=Clear

Opt  Queue      Library  Files  Writer  Status
---  ---
TEC0101  WTRTTEC02  0      0      RLS
TEC0102  WTRTTEC02  0      0      RLS
TEC0103  WTRTTEC02  0      0      RLS
TEC0104  WTRTTEC02  0      0      RLS
TEC0105  WTRTTEC02  0      0      RLS
TEC0106  WTRTTEC02  0      0      RLS
TEC0107  WTRTTEC02  0      0      RLS

Command
==>

F3=Exit  F4=Prompt  F5=Refresh  F12=Cancel  F24=More keys

MA  b 08/002
```

## 5. Execute a command [DLTLIB WTEC02] to delete the product library.

```
MAIN OS/400 Main Menu System: S65AA1FB

Select one of the following:

  1. User tasks
  2. Office tasks
  3. General system tasks
  4. Files, libraries, and folders
  5. Programming
  6. Communications
  7. Define or change the system
  8. Problem handling
  9. Display a menu
 10. Information Assistant options
 11. Client Access/400 tasks

 90. Sign off

Selection or command
==> DLTLIB WTRTTEC02_

F3=Exit  F4=Prompt  F9=Retrieve  F12=Cancel  F13=Information Assistant
F23=Set initial menu

MA  b 20/023
```

## Operational procedure

Follow the procedure below to operate the WorkStation Customization Object for TOSHIBA e-STUDIO.

### 1. Specify print file script (ORIENTATION, STAPLE, DUPLEX and DRAWER) for a document to be printed with the MFP.


For the details of file script parameters, see the following page:

 P.45 "Print file script"

### 2. Change a job to alter the OUTQ specified at the installation or the setup to the one for printing functions.

### 3. Start up the auto assign (resident) program.

For starting up, see the following page:

 P.38 "Step 3: Starting up auto assign (resident) program"

NOTE: • Start up the resident program every time you execute IPL.

### 4. Perform routine work.

When you are performing routine work, you do not need to particularly pay attention to this function.

### 5. Finish a job.

Finish a job in any of the following methods:

- Execute a command [WRKACTJOB]. Then select a job to be finished and select Option "4". Then press the execution key.
- Execute a command [ENDSBS] and then exit the corresponding sub system.

NOTE: • Turn the power of the printer to be used OFF before starting the operation; otherwise the program will exit in the middle of the operation.

## Print file script

Specify print file script below according to the printing style of a document to be printed with an MFP.

Printing Style		Attribute	
ORIENTATION	Portrait  Landscape	PAGRRT	: *AUTO (Leave it default.) Or select "0" : 90
STAPLE	TOP_LEFT TOP_RIGHT LEFT_DOUBLE TOP_DOUBLE	CORNERSTPL	: *TOPLEFT : *TOPRIGHT : *BOTLEFT : *BOTRIGHT
DUPLEX	LONG_EDGE SHORT_EDGE	DUPLEX	: *YES : *TUMBLE Printing directions on the back sides differ depending on the orientation. See "Printing directions on the back side (DUPLEX)" on the next page.
DRAWER	AUTO	DRAWER	: 1 (Leave it default.)

### Example:

The examples of commands for print file script are as follows:

#### Portrait + DUPLEX SHORT\_EDGE + STAPLE TOP\_LEFT:

CHGPRTF FILE (library name / spool file name) DUPLEX(\*TUMBLE) CORNER-STPL(\*TOPLEFT)

#### Automatic drawer selection

In case of LT/A4, the orientation of the paper is reversed when "TOP\_DOUBLE" and "STAPLE" are selected together. Therefore the drawer in this case shall be selected as follows:

#### LT/A4 (Portrait) + STAPLE TOP\_DOUBLE:

DRAWER: LT-R/A4-R

#### LT/A4 (Landscape) + STAPLE TOP\_DOUBLE:

DRAWER: LT/A4

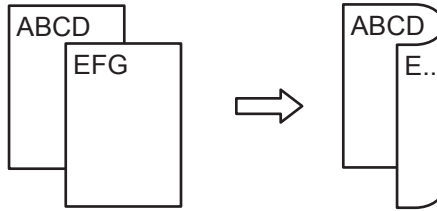
#### Printing directions on the back side (DUPLEX)

The examples of printing directions on the back side of the paper in case of "DUPLEX" are shown below.

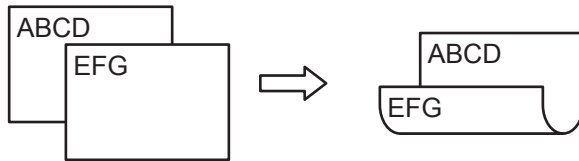
---

**LONG\_EDGE: DUPLEX(\*YES)**

Portrait

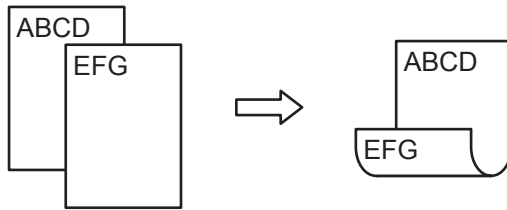


Landscape

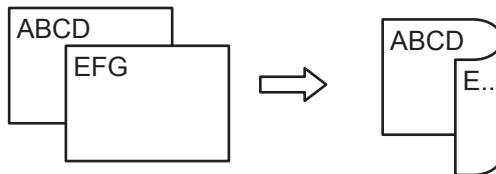


**SHORT\_EDGE: DUPLEX(\*TUMBLE)**

Portrait



Landscape



# Appendix

## Stapling specifications

	OUTQ*1	Printing Specifications		Available Sizes							Remarks	
		Por- trait/ Land- scape	STAPLE	LT	LG	LD	A3	A4	FO	COM		ST
1	xxxxxxx01	Portrait	OFF	✓	✓	✓	✓	✓	✓	✓	✓	Rotational degrees PAGRTT = *AUTO or 0
		Land- scape	OFF	✓	✓	✓	✓	✓	✓	✓	✓	Rotational degrees PAGRTT = 90
2	xxxxxxx02	Portrait	TOP_LEFT	✓	✓	✓	✓	✓	✓	✓	-	Rotational degrees PAGRTT = *AUTO or 0 Stapling position CORNERSTPL = *TOPLEFT
3	xxxxxxx03	Portrait	TOP_RIGHT	✓	✓	✓	✓	✓	✓	✓	-	Rotational degrees PAGRTT = *AUTO or 0 Stapling position CORNERSTPL = *TOPRIGHT
		Land- scape	TOP_LEFT	✓	✓	✓	✓	✓	✓	✓	-	Rotational degrees PAGRTT = 90 Stapling position CORNERSTPL = *TOPLEFT
4	xxxxxxx04	Portrait	TOP_DOUBLE	✓ LTR	✓	✓	✓	✓ A4R	✓	✓	-	Rotational degrees PAGRTT = *AUTO or 0 Stapling position CORNERSTPL = *BOTRIGHT
		Land- scape	LEFT_DOUBLE	✓ LTR	✓	✓	✓	✓ A4R	✓	✓	-	Rotational degrees PAGRTT = 90 Stapling position CORNERSTPL = *BOTLEFT
5	xxxxxxx05	Portrait	LEFT_DOUBLE	✓ LT	-	-	-	✓ A4	-	-	-	Rotational degrees PAGRTT = *AUTO or 0 Stapling position CORNERSTPL = *BOTLEFT
6	xxxxxxx06	Land- scape	TOP_RIGHT	✓	✓	✓	✓	✓	✓	✓	-	Rotational degrees PAGRTT = 90 Stapling position CORNERSTPL = *TOPRIGHT
7	xxxxxxx07	Land- scape	TOP_DOUBLE	✓ LT	-	-	-	✓ A4	-	-	-	Rotational degrees PAGRTT = 90 Stapling position CORNERSTPL = *BOTRIGHT

\*1: OUTQ numbers assigned by resident programs.

## Printing character size - Reference values

Paper Size	CPI	Line	Char.	Remarks
LT	CPI(10)	66	80	
	CPI(15)	66	120	
LT-R	CPI(10)	51	110	Number of characters: 158
	CPI(15)	51	163	
LG	CPI(10)	84	80	
	CPI(15)	84	120	
LG-R	CPI(10)	51	140	Number of characters: 204
	CPI(15)	51	210	
LD	CPI(10)	102	103	PAGRTT(0)
	CPI(15)	102	120	PAGRTT(0)
LD-R	CPI(10)	66	170	Number of characters: 249
	CPI(15)	66	255	
A3	CPI(10)	99	105	PAGRTT(0)
	CPI(15)	99	157	PAGRTT(0)
A3-R	CPI(10)	70	160	
	CPI(15)	70	240	
A4	CPI(10)	70	72	
	CPI(15)	70	108	
A4-R	CPI(10)	49	110	
	CPI(15)	49	165	
CO	CPI(10)	84	101	PAGRTT(0)
	CPI(15)	84	151	PAGRTT(0)
CO-R	CPI(10)	61	140	
	CPI(15)	61	210	
FO	CPI(10)	77	72	
	CPI(15)	77	108	
FO-R	CPI(10)	50	130	
	CPI(15)	50	195	
ST	CPI(10)	51	55	
	CPI(15)	51	82	
ST-R	CPI(10)	33	85	
	CPI(15)	33	125	

\* All paper sizes noted "-R" are rotated in "PAGRTT (90)".



# Glossary

## Definitions of Terms

Term	Definition
DLC	<b>Data Link Control</b> , the data link layer protocol.
Duplex	The process of printing on both sides of a sheet of paper.
Finishing option	A feature provided by TOSHIBA printers and copiers for doing such things as stapling and hole punching documents.
Gateway address	The default address that provides a single point of entry to a network.
IP Address	<b>Internet Protocol</b> address of a computer or server attached to a network.
PCL	<b>Printer Control Language</b> , developed by Hewlett Packard.
Print stream	The information the AS/400 sends to its printer port. This information includes the text to be printed and various print commands for formatting the text and graphics.
Subnet mask	The method used for splitting IP networks into a series of subnets (subgroups).



DP-2090/2520/3000/3570/4570  
DP-5550/6550/7550/8550  
FC-2020C/2330C/2820C/2830C/3520C/3530C/4520C  
FC-5520C/6520C/6530C  
DP-1670/2070/2370  
FC-2500C/3500C/3510C  
DP-1650/2040  
FC-281C/351C/451C  
DP-5200/6000/7200/8500  
DP-3540/4540  
DP-2050/2340/2840  
DP-1830/2120/2420  
OME06005510

## Guidance for AS/400 Print Solution

---

**e-STUDIO520/600/720/850**  
**e-STUDIO281c/351c/451c**  
**e-STUDIO352/452**  
**e-STUDIO202L/232/282**  
**e-STUDIO2500c/3500c/3510c**  
**e-STUDIO165/205**  
**e-STUDIO167/207/237**  
**e-STUDIO523/603/723/853**  
**e-STUDIO353/453**  
**e-STUDIO203L/233/283**  
**e-STUDIO2020c/2330c/2820c/  
2830c/3520c/3530c/4520c**  
**e-STUDIO5520c/6520c/6530c**  
**e-STUDIO283c/353c/453c**  
**e-STUDIO205L/255/305/355/455**  
**e-STUDIO555/655/755/855**  
**e-STUDIO182/212/242**

## **TOSHIBA TEC CORPORATION**

2-17-2, HIGASHIGOTANDA, SHINAGAWA-KU, TOKYO, 141-8664, JAPAN

## Free Manuals Download Website

<http://myh66.com>

<http://usermanuals.us>

<http://www.somanuals.com>

<http://www.4manuals.cc>

<http://www.manual-lib.com>

<http://www.404manual.com>

<http://www.luxmanual.com>

<http://aubethermostatmanual.com>

Golf course search by state

<http://golfingnear.com>

Email search by domain

<http://emailbydomain.com>

Auto manuals search

<http://auto.somanuals.com>

TV manuals search

<http://tv.somanuals.com>