

# Quick Network Setup Guide

WorkCentre M123/M128  
WorkCentre Pro 123/128

701P42078



---

© 2004. All rights reserved.

Copyright protection claimed includes all forms and matters of copyrighted material and information now allowed by statutory or judicial law or hereinafter granted, including without limitations, material generated from the software programs which are displayed on the screen, such as icons, screen displays, looks etc.

Xerox®, The Document Company®, the digital X® and all Xerox products mentioned in this publication are trademarks of Xerox Corporation. Product names and trademarks of other companies are hereby acknowledged.

See the About License section for detailed information on licensed products.

The information in this document is correct at the time of publication. Xerox reserves the right at any time to change the information without notice. Changes and technical updates will be added in subsequent editions of the documentation. For the latest information, go to [www.xerox.com](http://www.xerox.com).

# Table of Contents

---

<b>1. QUICK NETWORK SETUP (DHCP) .....</b>	<b>4</b>
PRE-REQUISITES FOR QUICK NETWORK SETUP USING TCP/IP:.....	4
CONFIGURING M123/M128 IP ADDRESS VIA DHCP:.....	4
PROCEDURE FOR QUICK NETWORK SETUP USING TCP/IP:.....	4
<b>2. QUICK NETWORK SETUP (STATIC IP) .....</b>	<b>5</b>
PROCEDURES FOR MANUAL SETUP OF NETWORK USING STATIC IP ADDRESS:.....	6

# Quick Network Setup (DHCP)

*For WorkCentre M123/M128 WorkCentre Pro 123/128*

The **System Administrator Guide** contains detailed information about Network setups. This document is intended for setting up the Network using TCP/IP. If using Novell IPX, then see the System Administrator Guide for setup procedures.

## **Pre-requisites for quick Network Setup using TCP/IP:**

1. Confirm that an existing operational network utilizing TCP/IP is available.
2. Confirm that the Ethernet cable is plugged into the M123/M128 and into an operational Ethernet port on the network.

**NOTE:** *The Ethernet cable is an RJ45 type and is not supplied by Xerox*

## **Configuring M123/M128 IP address via DHCP:**

On startup, the M123/M128 Multifunction device defaults to DHCP to obtain its network configurations. A DHCP server delivers an IP address as well as other configuration settings to the device. If you use a DHCP server to allocate an IP address to the M123/M128 device, then proceed as follows:

## **Procedure for quick Network Setup using TCP/IP:**

**Step 1:** Power on the M123/M128 device.

**Step 2:** Wait a minute or so while the M123/M128 device negotiates an IP address. Then print out the Network Connectivity Page.

To print the Network Configuration Report:

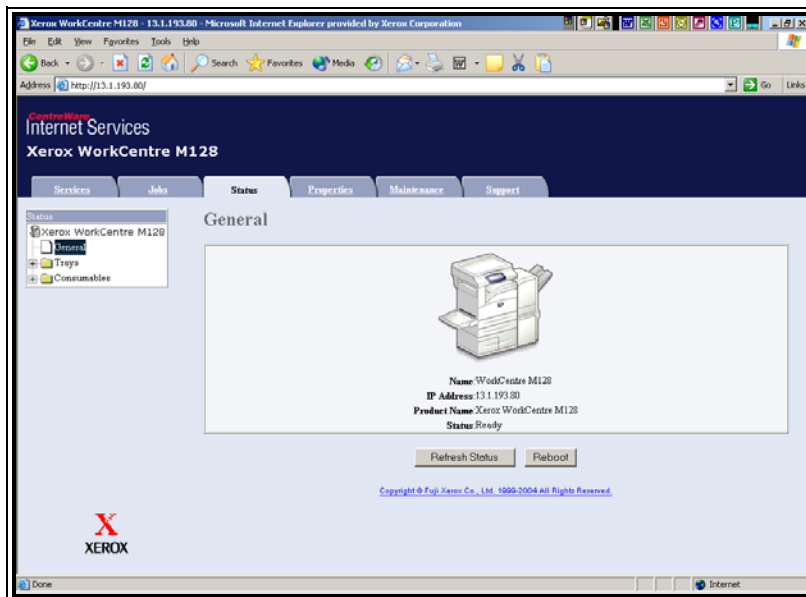
1. Select the **Machine Status** button on the M123/M128
2. Select **Print Report List**
3. Select **Print Mode Settings**
4. Select **Setting List – Common Items**
5. Press the **Start** button.

The Network Connectivity Page will be printed. Read the details to confirm that an IP address has been allocated and that is a valid IP address on your network.

**NOTE:** *If the IP address on the Connectivity report starts with 167.xxx.xxx.xxx, then the DHCP server has not properly allocated an address or DHCP is not enabled on your network.*

**Step 3:** Record the IP address allocated and from a workstation, open up a web browser (such as Internet Explorer). Type in the URL <http://xxx.xxx.xxx.xxx> (The xxx's represent the 123/M128 device IP address). If connected properly, you will see the M123/M128 device's CentreWare Internet Services web page (see below).

**Figure 1**



**NOTE:** *CentreWare Internet Services is a powerful tool for configuring the M123/M128 device remotely. The default user name is “x-admin” and password is “11111”. These should be changed after install.*

**Step 4:** Load the Print Drivers on the workstations that will be accessing the M123/M128 device. For more detailed instructions, see the *System Administrator Guide*.

## Quick Network Setup (Static IP)

*For: WorkCentre M123/M128 WorkCentre Pro 123/128*

### **Pre-requisite for manual setup of network using Static IP Address:**

Note that on startup the M123/M128 Multifunction device defaults to DHCP to obtain its network configurations, so DHCP must be turned off by manually entering a Static IP

Before installing, record the following information for use during setup:

TCP/IP Address:  
Gateway Address:  
Subnet Mask:  
DNS Server Address:

*To obtain this information contact your System Administrator.*

## **Procedures for manual setup of network using Static IP Address:**

**Step 1:** Power on the M123/M128 device.

**Step 2:** Select on “**Login/Logout**”. Enter the UserID (11111). Select “**System Settings**” → “**System Settings**” → “**Network Settings**” → **Protocol Settings**.

**Step 3:** Select “**IP address**” and Press “**Change Settings**”. Enter the IP address of the machine. If there is an incorrect IP address in the field hit the **Clear** button once to delete the incorrect IP address.

**For Example:**

To enter in our example IP address of 10.224.40.57, type 10 then press the “Next” key. Type 222 (There is no need to hit the “Next” key now because the octet field is full. In this case, the cursor selection automatically moves to the next octet field of the IP address). Type 40 then press the “Next” key, and then type 57. Press the **Exit** key when done.

**Step 4:** Enter in the Default Gateway, Subnet Mask.

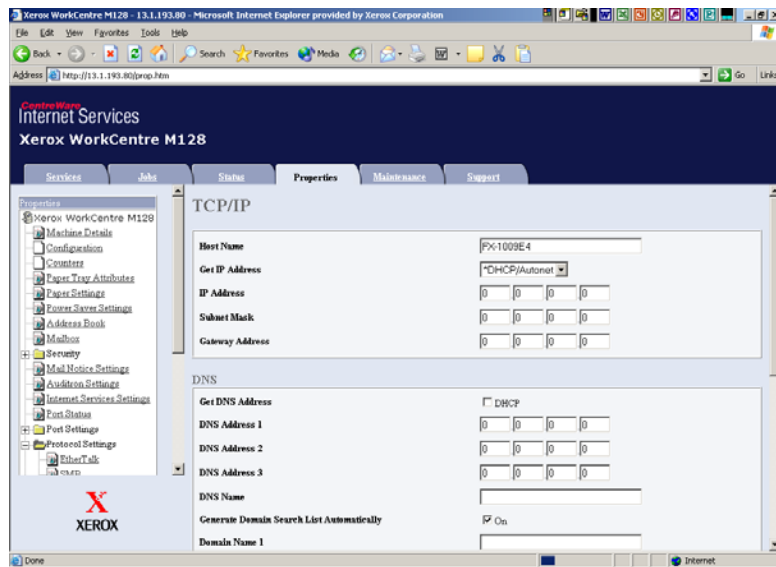
**NOTE:** DNS setting must be entered through the Internet Services.

**Step 5:** From a workstation, open a web browser (such as Internet Explorer). Type in the URL, <http://xxx.xxx.xxx.xxx> (the xxx’s represent the M20 device’s IP address). If connected properly, you should be presented with the M123/128 device’s CentreWare Internet Services web page (see Figure 1).

**Step 6:** Load the Print Drivers on the workstations that will be accessing the M123/M128 device. *For more detailed instructions, see the System Administrator Guide.*

**NOTE:** *The Default Gateway, Subnet Mask and DNS address settings can be entered via CentreWare Internet Services if the device is on the same subnet as the workstation. To access them via CentreWare Internet Services type in the M123/128 device’s IP address in the Url. Click on the **Properties** tab, then click the **Protocols Settings** folder, Click on the **TCP/IP**. See example on the next page.*

**Figure 2**



**NOTE:** CentreWare Internet Services is a powerful tool for configuring the M123/M128 device remotely. The default user ID is “11111” and password is “x-admin”. These should be changed after install.

## Free Manuals Download Website

<http://myh66.com>

<http://usermanuals.us>

<http://www.somanuals.com>

<http://www.4manuals.cc>

<http://www.manual-lib.com>

<http://www.404manual.com>

<http://www.luxmanual.com>

<http://aubethermostatmanual.com>

Golf course search by state

<http://golfingnear.com>

Email search by domain

<http://emailbydomain.com>

Auto manuals search

<http://auto.somanuals.com>

TV manuals search

<http://tv.somanuals.com>