



## DIGITAL MIXING CONSOLE

---

CL5

CL3

CL1

QL5

QL1

### **CL/QL series V4.5 Supplementary Manual**

This supplementary manual explains mainly the functions that have been added or changed in CL5/CL3/CL1 and QL5/QL1 firmware V4.5.

Use it in conjunction with the CL5/CL3/CL1 and QL5/QL1 V4 Owner's Manual and Reference Manual.

### **CL/QL Editor V4.5 Supplementary Manual**

This supplementary manual explains mainly the functions that have been added or changed in CL/QL Editor V4.5.

**NOTE**

- The explanations in this supplementary manual reference the CL5.
- Keep in mind that in the case of the CL3/CL1 or QL5/QL1, certain channels and faders shown in example screens do not exist on those models and will not be shown on those displays.

# Contents

- Support for Rio3224-D2/Rio1608-D2 ..... 3**
- Support for Dante Domain Manager ..... 4**
  - CL series and QL series..... 4
  - Rio3224-D2/Rio1608-D2 (V1.10 or later)..... 5
  - About Alerts (R series)..... 5
- Indication Improvements ..... 6**
  - Supported Device REMOTE icon ..... 6
  - REMOTE CONTROL STATUS indicator ..... 6
  - SYSTEM/SYNC indicator on the I/O DEVICE screen ..... 7
  - NOT CTRL indicator when CONSOLE ID is set to OFF (CONSOLE ID=0)..... 7

## Information

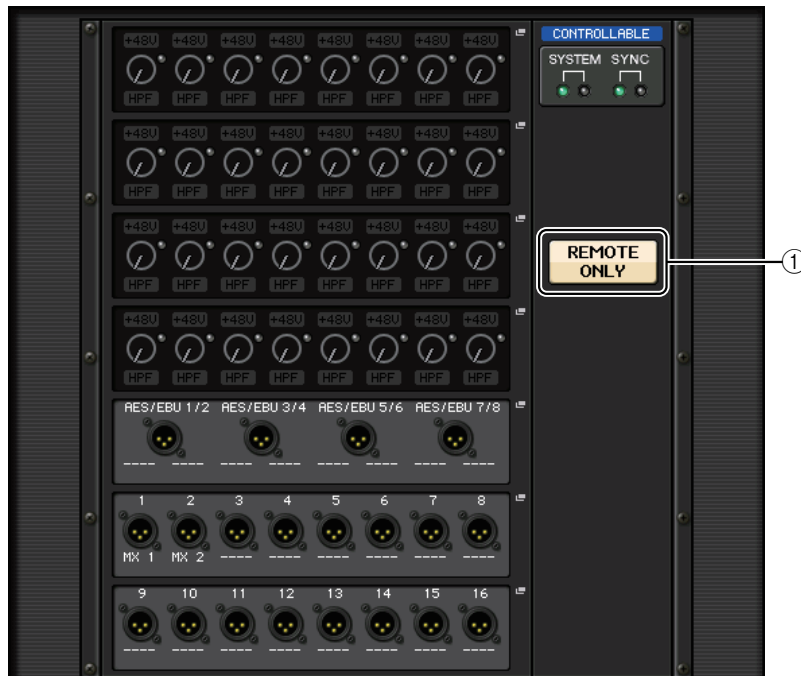
This product uses open source software.  
 For information about the license, refer to \*\*\* (product name) \_OSSLicense\_e.pdf, which is included in the downloaded file.

# Support for Rio3224-D2/Rio1608-D2

Now supports the Rio3224-D2 and the Rio1608-D2 as remote controllable devices.



## I/O page



### ① REMOTE ONLY button

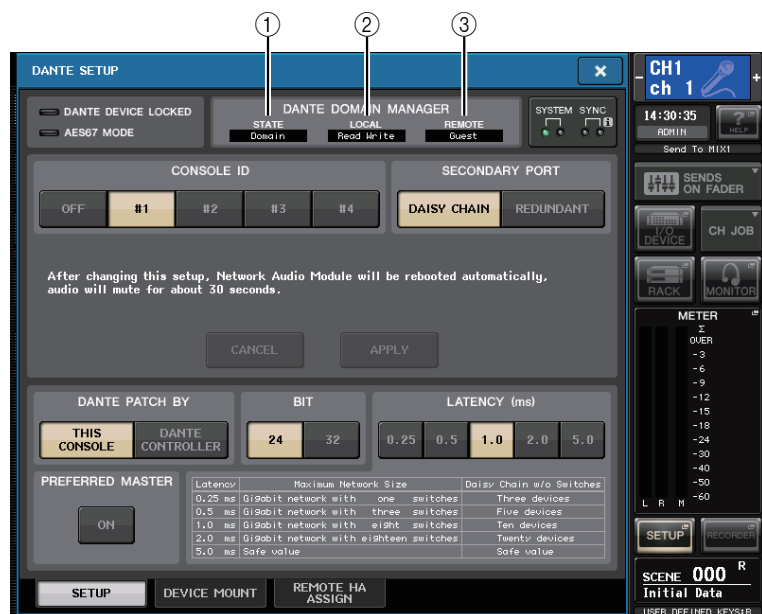
Set this button to ON to disable panel operation of the Rio3224-D2/Rio1608-D2 unit, making only remote controls available. The operation (selecting ON or OFF) of the REMOTE ONLY button is available only from a console the WITH RECALL button set to ON in the REMOTE HA SELECT screen.

# Support for Dante Domain Manager

Now supports the Dante Domain Manager (DDM).

## CL series and QL series

When a DDM server exists in the network, or when enrolling a domain, the DANTE DOMAIN MANAGER section is shown at the top of the DANTE SETUP screen.



### ① STATE

Displays the status of domain participation.

- Domain: Domain is enrolled
- Disconnected: Domain is enrolled without connecting to the DDM server
- Unmanaged: Domain is not enrolled

### ② LOCAL

Displays the access status of the Dante settings (including the DANTE PATCH settings) on the current operating unit.

- Read Write: Editing is available
- Read Only: Editing is disabled

### ③ REMOTE

Displays the access status of the Dante settings of the external Dante devices.

- Operator: Editing is available
- Guest: Reading is available, editing is disabled
- None: Reading and editing are disabled

The display changes depending on the REMOTE settings.

- I/O DEVICE screen



- DANTE PATCH screen, DANTE SETUP DEVICE MOUNT screen



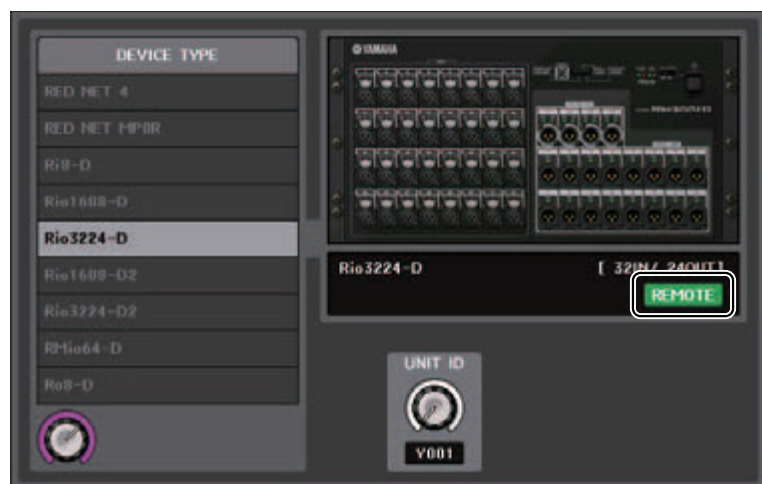


## Indication Improvements

This update improves some indications to make the status of mounted devices and remote control availability more easy to understand.

### Supported Device REMOTE icon

The REMOTE icon appears in the remote control supported device.



#### Supported Device:

- Rio3224-D/Rio1608-D
- Rio3224-D2/Rio1608-D2
- Ri8-D/Ro8-D
- QL1/QL5
- Tio1608-D
- RED NET 4
- RED NET MP8R
- RMio64-D
- RSio64-D
- ULXD4D/ULXD4Q
- ULXD4/QLXD4/AXT400

## REMOTE CONTROL STATUS indicator



The REMOTE CONTROL STATUS indicator appears in all remote control supported devices.



## SYSTEM/SYNC indicator on the I/O DEVICE screen

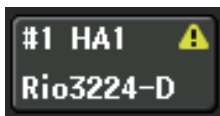
Now displays error and information icons to quickly check the status of the system and synchronization.



-  Error
-  Information

When touching these icons, the details of errors and information are displayed at the bottom of the display.

When an error occurs in SYSTEM or SYNC, the Error icon will appear at the top of right side on the Display switch button.



## NOT CTRL indicator when CONSOLE ID is set to OFF (CONSOLE ID=0)

When the CONSOLE ID select button is set to OFF in the DANTE SETUP screen, the NOT CTRL indicator appears below the Display switch button of each device.



The NOT CTRL indicator also appears on the icons of the DANTE PATCH screen.





Yamaha Pro Audio global website  
<http://www.yamahaproaudio.com/>  
Yamaha Downloads  
<http://download.yamaha.com/>

Manual Development Group  
© 2018 Yamaha Corporation  
Published 02/2018 MA-A0



## Free Manuals Download Website

<http://myh66.com>

<http://usermanuals.us>

<http://www.somanuals.com>

<http://www.4manuals.cc>

<http://www.manual-lib.com>

<http://www.404manual.com>

<http://www.luxmanual.com>

<http://aubethermostatmanual.com>

Golf course search by state

<http://golfingnear.com>

Email search by domain

<http://emailbydomain.com>

Auto manuals search

<http://auto.somanuals.com>

TV manuals search

<http://tv.somanuals.com>