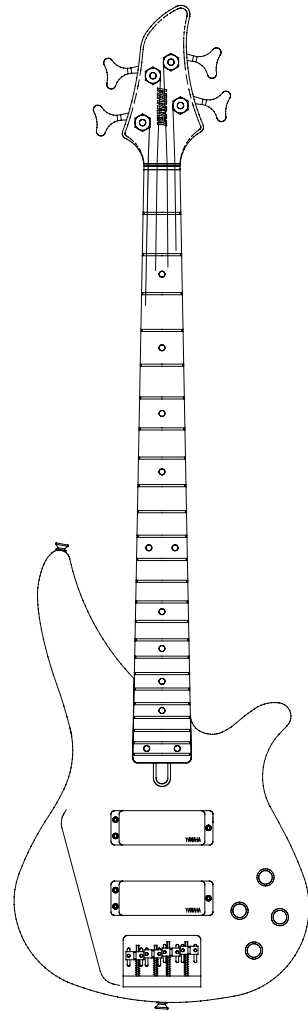


ELECTRIC BASS RBX760A II

SERVICE MANUAL

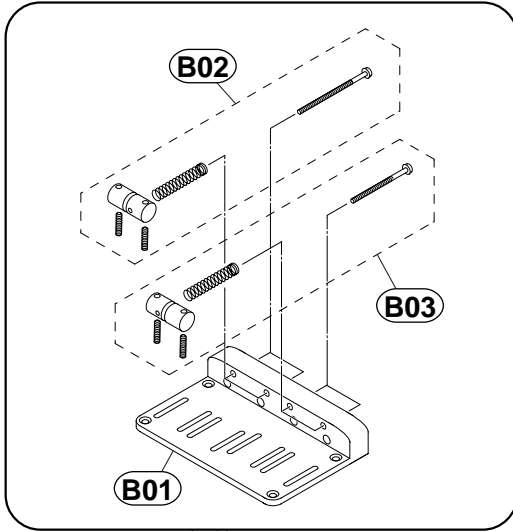


■ CONTENTS

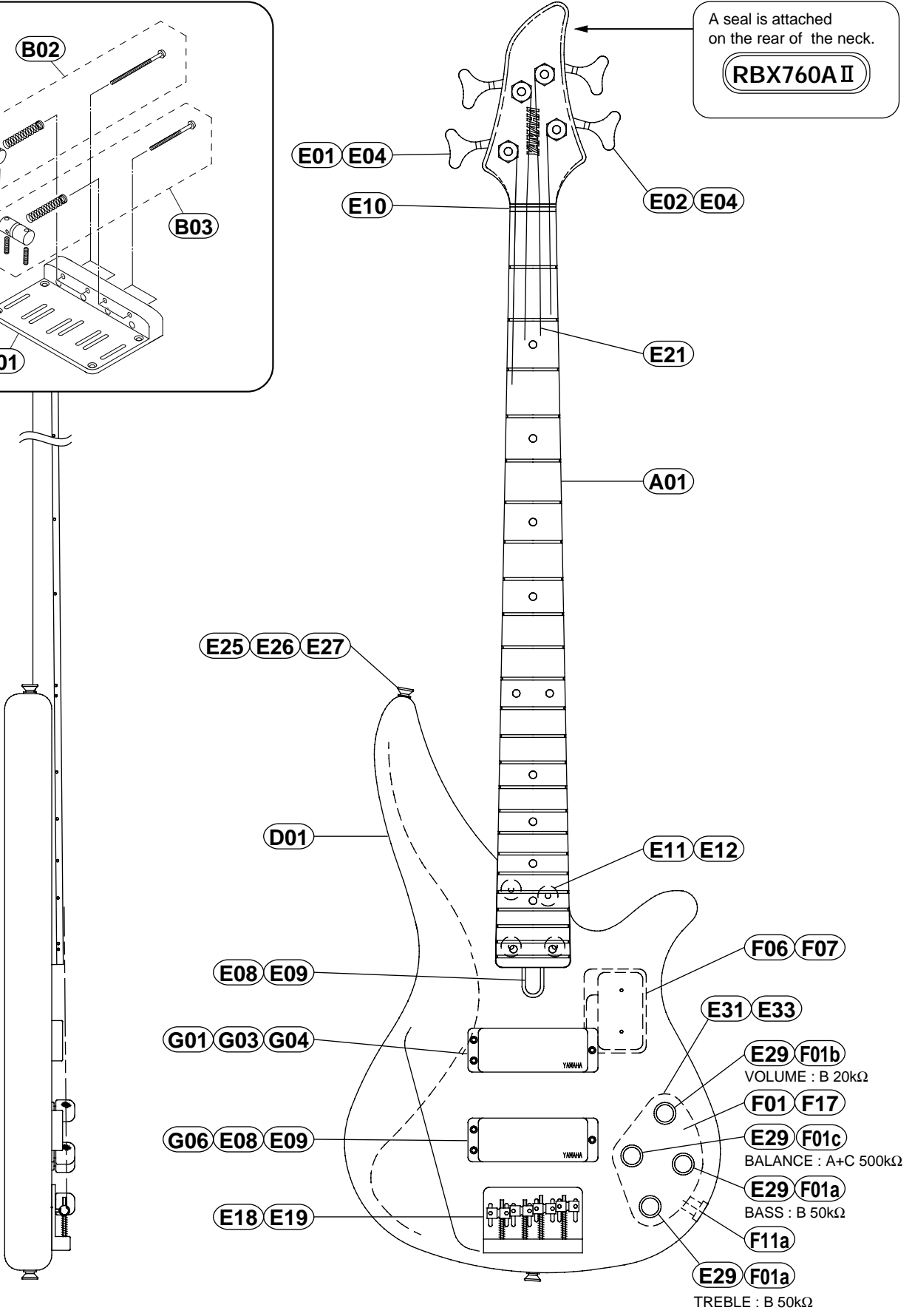
OVERALL ASSEMBLY	2
PARTS LIST	3
CIRCUIT BOARDS	4
IC BLOCK DIAGRAM	4
CIRCUIT DIAGRAM	5
WIRING	5
SPECIFICATIONS	6

OVERALL ASSEMBLY

E18 Bridge Assembly Diecast : GOLD (QC347800)



A01b
A seal is attached on the rear of the neck.
RBX760A II



PARTS LIST

REF NO.	PART NO.	DESCRIPTION		REMARKS	QTY	RANK
A01	DX808950	OVERALL ASSEMBLY		RBX760AII		31
A01	DX808960	Neck Assembly		TLR		31
A01	DX808970	Neck Assembly		TLG		31
A01b	--	Seal		TLB	(QC45980)	
D01	--	Body				
E01	QC336300	Tuning Machine Assembly	RM1243 (GOLD)		2	09
E02	QC336400	Tuning Machine Assembly	RM1243L (GOLD)		2	09
* E04	03704070	Round Head Wood Screw	2.4X10 GOLD		4	
E08	CB821460	Rod Cover	BL			03
* E09	03706220	Oval Head Wood Screw	2.1X10 FCM3BL			
E10	CB821090	Nut	40mm Ivory			07
E11	QC205200	Neck Joint Bushing	BL		4	04
E12	VI825000	Oval Head Tapping Screw	5.0X40 FCM3BL		4	01
E18	QC347800	Bridge Assembly	GOLD Diecast			11
E19	EN230130	Oval Head Tapping Screw	3.0X25 GOLD		4	02
E21	--	Strings	H4030	1set (AA80931)		
E25	BB802460	Strap Button	ST type (GOLD)		2	02
E26	EN230130	Oval Head Tapping Screw	3.0X25 GOLD		2	02
E27	VB793700	Spacer Felt	BL		2	01
E29	QC032200	Knob	GOLD		4	06
E31	VD955600	Back Cover	Electrical (BL)			05
E33	EB620020	Oval Head Wood Screw	2.7X13 FCM3BL		4	03
F01	--	Electrical Unit		(QC35480)		
F01a	QC354700	Circuit Board Assembly				09
F01b	QC259500	Variable Resistor	B20K ohm	VOLUME		04
F01c	QC259400	Variable Resistor	A+C 500K ohm CC	BALANCE		05
F06	QA223300	Box for Dry Cell				04
F07	QC025000	Pan Head Tapping Screw	3.0X8 FCM3BL		2	
F11a	QA209900	Jack				07
F17	EA620060	Round Head Wood Screw	2.7X13 FCM3BL	For the earth lug installation	2	03
* G01	QC460500	Pickup Assembly		Front		
G03	VJ388800	Round Head Wood Screw	2.6X35 FCM3BL		3	02
G04	CB815450	Pickup Cushion	85LX17WX15H			02
* G06	QC460600	Pickup Assembly		Rear		
G08	VJ388800	Round Head Wood Screw	2.6X35 FCM3BL		3	02
G09	CB815450	Pickup Cushion	85LX17WX15H			02
IC1	QC354700	Circuit Board Assembly				09
D1	IG028400	IC	NJM4558D-Y	OP AMP		03
VR3,4	IF000040	Diode	1S1555			01
H01	QC251700	Variable Resistor	B50K ohm CC	TREBLE,BASS	2	04
H01	QC354000	Accessory Unit	(G-1)	1set		07
B01	QC347800	Bridge Assembly	GOLD Diecast			11
B02	QC348000	Bridge Base	GOLD			07
B02	NX818360	Bridge Piece Assembly	1,2 (GOLD)	1,2	2	05
B03	NX818370	Bridge Piece Assembly	3,4 (GOLD)	3,4	2	05

* : New Parts

RANK : Japan only

WARNING : CHEMICAL CONTENT NOTICE!

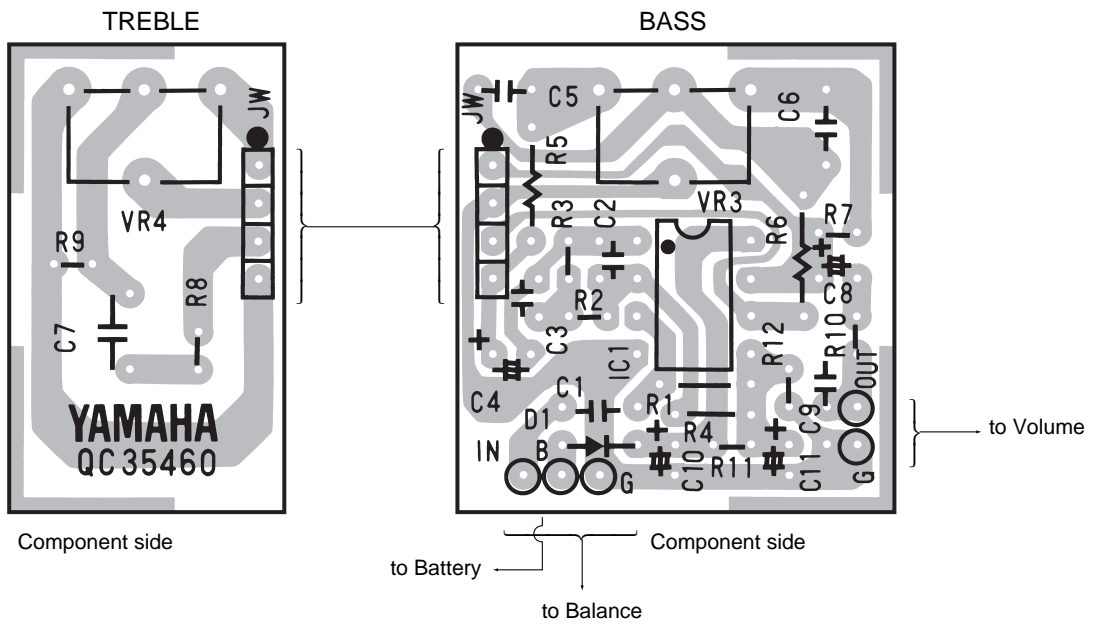
The solder used in the production of this product contains LEAD. In addition, other electrical/electronic and/or plastic (Where applicable) components may also contain traces of chemicals found by the California Health and Welfare Agency (and possibly other entities) to cause cancer and/or birth defects or other reproductive harm.

DO NOT PLACE SOLDER, ELECTRICAL/ELECTRONIC OR PLASTIC COMPONENTS IN YOUR MOUTH FOR ANY REASON WHAT SO EVER!

Avoid prolonged, unprotected contact between solder and your skin! When soldering, do not inhale solder fumes or expose eyes to solder/flux vapor!

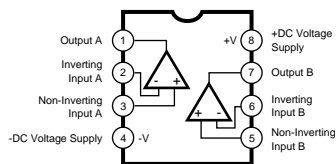
If you come in contact with solder or components located inside the enclosure of this product, wash your hands before handling food.

CIRCUIT BOARDS

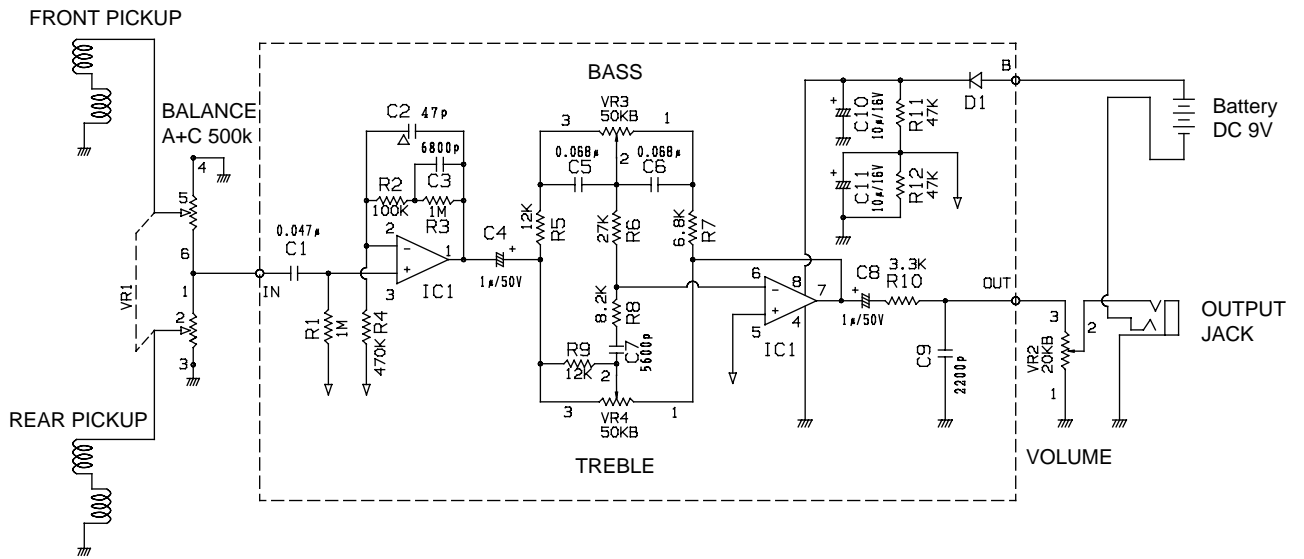


IC BLOCK DIAGRAM

- NJM4558D-Y (IG028400)
Dual Operational Amplifier

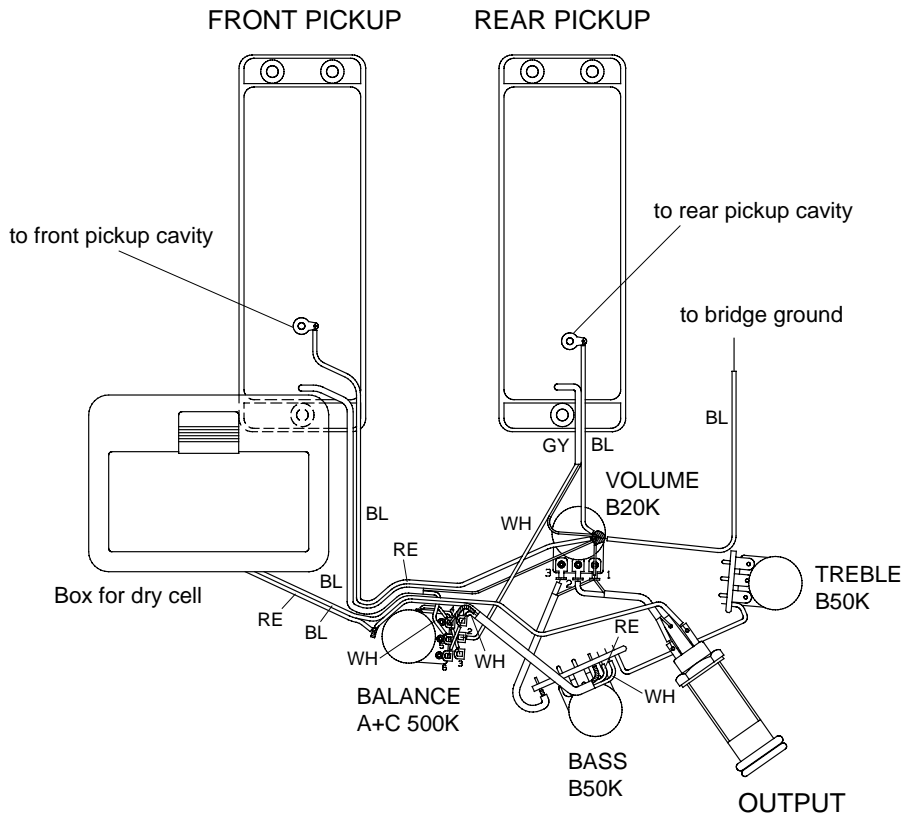


CIRCUIT DIAGRAM



- Electrolytic capacitor
- Mylay capacitor
- Ceramic capacitor

WIRING



■ SPECIFICATIONS

● STANDARD SPECIFICATIONS

Scale Length 863.6mm
 Body-Neck Construction Bolt On
 Length 1100.0mm
 Width 327.0mm
 Net Weight 3.9kg

● COLOR

Body
 TLR Translucent Red
 TLG Translucent Green
 TLB Translucent Blue
 Neck
 TLR Translucent Red
 TLG Translucent Green
 TLB Translucent Blue

● BODY

Material Alder, Ash veneer
 Body Depth 41.0mm

● FINGERBOARD

Material Rosewood
 Fingerboard Width 0-F 40.0 mm, 12-F 56.4 mm
 No. of Frets 24

● NECK

Material Maple
 Neck Thickness 1-F 21.0 mm, 12-F 24.4 mm

● PARTS

Hardware Gold Plated
 Nut Urea
 Bridge Diecast : Gold
 Strings YAMAHA H4030

● CONTROLS

Volume B20k ohm x 1
 Tone B50k ohm x 2
 Balance A+C 500k ohm x 1

● PICKUPS

Front/Rear Double Coil
 Magnet
 Front/Rear Ferrite

Free Manuals Download Website

<http://myh66.com>

<http://usermanuals.us>

<http://www.somanuals.com>

<http://www.4manuals.cc>

<http://www.manual-lib.com>

<http://www.404manual.com>

<http://www.luxmanual.com>

<http://aubethermostatmanual.com>

Golf course search by state

<http://golfingnear.com>

Email search by domain

<http://emailbydomain.com>

Auto manuals search

<http://auto.somanuals.com>

TV manuals search

<http://tv.somanuals.com>