

T-GONG ASSEMBLY GUIDE



PARTS:

- C-Frame with two attached gong holders
- Front wheel assembly with swivel wheels
- Back wheel assembly with stationary wheels

YOU WILL NEED:

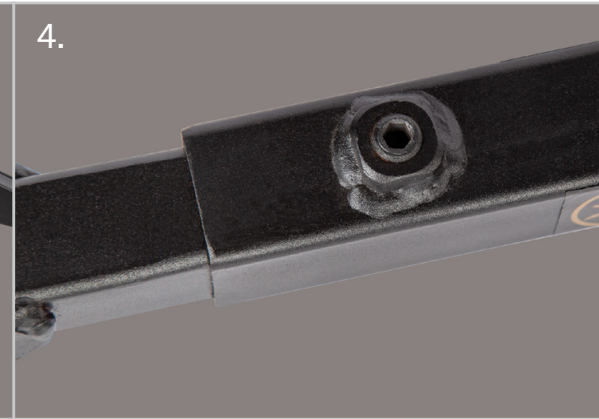
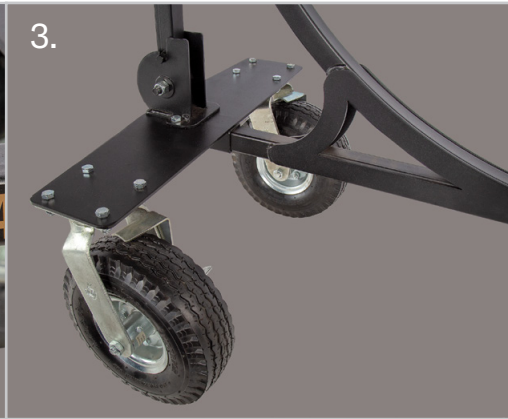
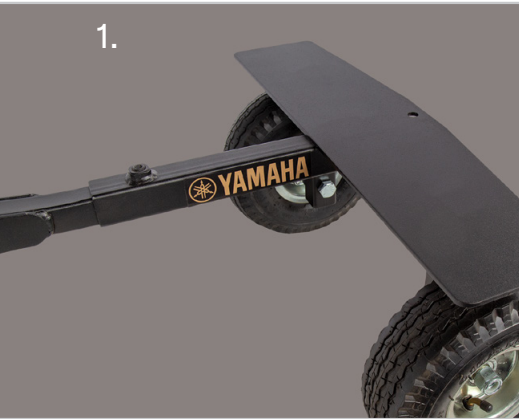
- Allen wrench (provided)

1. Insert the open end of the C-Frame tubing into the back wheel assembly with stationary wheels.

2. Tighten screws on the back end of the frame with the provided Allen wrench.

3. Insert the closed end of the C-frame tubing into the front wheel assembly with swivel wheels.

4. Tighten screws on the front end of the frame with the provided Allen wrench.



5. Adjust the gong placement as needed by moving the positions of the gong rope hooks.

6. Ensure the gong rope is tight, with very little slack.

7. Adjust the gong rope hooks and tighten the set screw as needed.

Free Manuals Download Website

<http://myh66.com>

<http://usermanuals.us>

<http://www.somanuals.com>

<http://www.4manuals.cc>

<http://www.manual-lib.com>

<http://www.404manual.com>

<http://www.luxmanual.com>

<http://aubethermostatmanual.com>

Golf course search by state

<http://golfingnear.com>

Email search by domain

<http://emailbydomain.com>

Auto manuals search

<http://auto.somanuals.com>

TV manuals search

<http://tv.somanuals.com>