

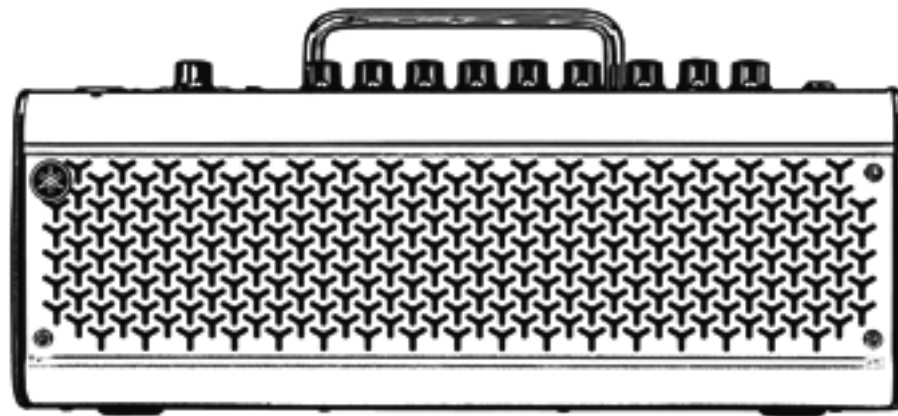


Guitar Amplifier / Amplificateur pour guitare /  
吉他扩音器 / Gitarrenverstärker /  
Amplificador de guitarra / Amplificador de guitarra /  
Amplificatore per chitarra / Гитарный усилитель /  
기타 앰프 / ギターアンプ

# THR Series

## THR30IIA Wireless

Quick Guide / Guide de référence rapide /  
快速指南 / Kurzanleitung / Guía rápida /  
Guia Rápido / Guida rapida /  
Краткое руководство /  
간편설명서 / クイックガイド



Please read Safety Instructions Sheet carefully before proceeding.  
Veuillez lire attentivement la fiche d'instructions de sécurité avant de poursuivre.  
Bitte lesen Sie die Sicherheitshinweise vor Gebrauch sorgfältig durch.  
Leia a Folha de Instruções de Segurança com atenção antes de prosseguir.  
Lea atentamente la ficha de instrucciones de seguridad antes de continuar.  
Leggere attentamente le istruzioni di sicurezza prima di procedere.  
Внимательно прочитайте Инструкцию по технике безопасности, прежде чем приступить к эксплуатации.  
在操作使用前，请仔细阅读安全说明表。  
사용하기 전에 안전 지침을 주의 깊게 읽어 보십시오.  
ご使用前にセーフティインストラクションズシートを必ずお読みください。

VDU9280

Published 9/2020 2020年9月发行 POES-A0



YAMAHA CORPORATION

10-1 Nakazawa-cho, Nakaku, Hamamatsu, 430-8650 Japan  
Manual Development Group  
© Yamaha Corporation

**Main Features**

- Sophisticated guitar amplifier with modeling made possible by Yamaha's original VCM technology
- THR301IA Wireless is compatible with the Line 6 Relay G10T wireless transmitter. (sold separately)
- Bluetooth® capability enables playing music from a smart device
- Built-in rechargeable battery enables use without AC adaptor

**Specifications**

<b>Dimensions (W x H x D)</b>	420 x 195 x 155 mm
<b>Weight</b>	4.4 kg
<b>Power Consumption</b>	22 W
<b>Rated Output</b>	30 W (15 W + 15 W)
<b>Power Source</b>	AC adaptor or built-in rechargeable battery
<b>Accessories</b>	<ul style="list-style-type: none"> <li>• AC adaptor (YNT345-1530)</li> <li>• Quick Guide (this sheet)</li> <li>• Safety Instructions Sheet: Includes PRECAUTIONS and NOTICE. Please read carefully before proceeding.</li> <li>• Service offices list</li> <li>• Cubase AI Download Information: Includes an access code for downloading Steinberg's DAW software Cubase AI. For instructions on downloading, installing and setting up, refer to the reference manual.</li> </ul>
<b>Charging temperature</b>	5 - 35 °C

\* For further details on the product, download the THR301IA Wireless reference manual from the website: <https://download.yamaha.com/>

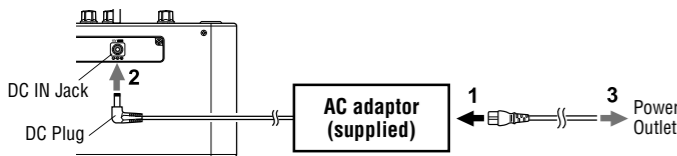
**Power**

THR301IA Wireless can operate on either DC power (via the AC adaptor) or with the built-in rechargeable battery.

**When using the AC adaptor**

Connect the supplied AC adaptor to the DC IN jack located on the rear side of the THR301IA Wireless. Connect the AC plug to a power outlet.

\* Follow the Safety Instructions before making connections.



**Turning the power on and off**

Press the power button [ ] on the top of THR301IA Wireless for one second to turn the power on. The LED of the power button lights when turning the power button on. The LED of the THR301IA Wireless lights in green while charging. Otherwise, it lights in red.

**Charging the built-in rechargeable battery**

Connect the supplied AC adaptor to the DC IN jack located on the rear side of the THR301IA Wireless. The LED of the power button lights in green while charging.

**Connection**

You can connect with a standard instrument cable or the Line 6 Relay G10T.

**Connecting to guitar by wireless**

The THR301IA Wireless can connect with the Relay G10T by wireless. The optimal channel is set automatically by connecting the Relay G10T to the INPUT jack located on the top of the THR301IA Wireless for at least 10 seconds. For details on wireless connection, refer to the reference manual.

**Connecting to microphone and electronic musical instrument**

THR301IA Wireless can connect with a microphone and an electronic musical instrument by wire. For details, refer to the reference manual.

**Charging the Relay G10T**

Connect the Relay G10T to the INPUT jack located on the top of the THR301IA Wireless. The built-in rechargeable battery starts charging automatically.

**Connecting to a smart device via Bluetooth**

Press the Bluetooth button located on the top of the THR301IA Wireless and operate the smart device as indicated the following table.

LED	Operation	LED after operation	Status
Unlit	Press for three seconds	Flashes in green	Pairing mode
Flashes in green	Configure Bluetooth on the smart device within three minutes	Lights in green	Connected
Lights in green	Play music on the smart device	Lights in green	Connected

\* For details on Bluetooth configuration, refer to the manual of the smart device.

**Turning the tuner on and off**

Press the TUNER TAP button for one second to turn on. Press the TUNER TAP button again to turn off. For details, refer to the reference manual.

**Storing user settings**

The settings for the knobs on the top of the THR301IA Wireless (excepting the [VOLUME] and [MIC/INST VOLUME] knobs) are stored in user memory. Press one of the [USER MEMORY] buttons for 2 seconds to save your settings to that preset location. For details on the user memory, refer to the reference manual.

**Application software**

You can also edit the tone and settings of the THR301IA Wireless with the THR Remote app. The THR Remote can be used (in addition to the top panel controls) to edit settings such as compressor.

For Windows and Mac, download and install THR Remote from the website:

<https://download.yamaha.com/>

For Android and iOS, install THR Remote through the appropriate app store.

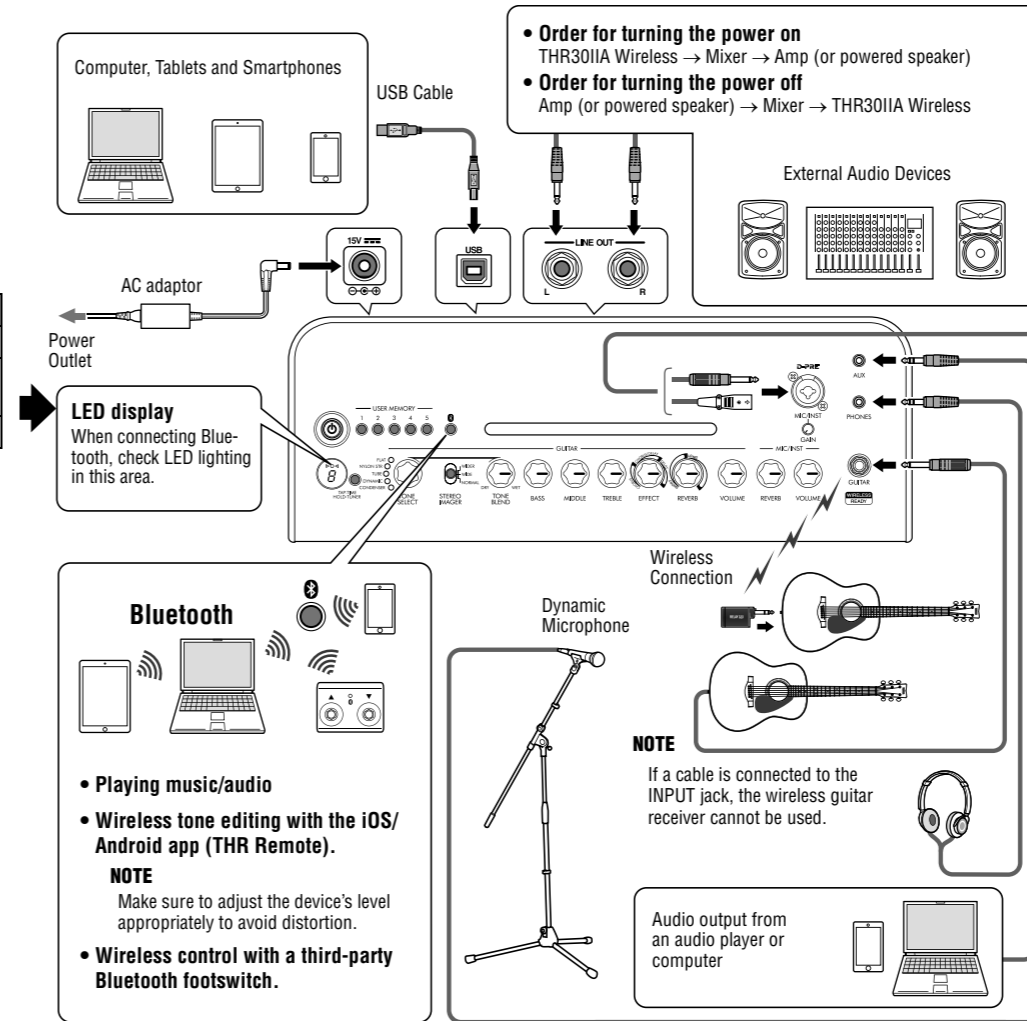
For details on the using THR301IA Wireless with a computer, refer to the reference manual.

**Connection Example**

- Make sure that all devices to be connected to the unit by cable are turned off.
- When connecting the unit to an external device, use an appropriate cable that matches with the jack's specifications and connect it securely.

**Precautions for using the USB jack**

Make sure to follow the points at right when connecting a computer to the THR301IA Wireless USB jack to avoid loss of data by the computer or the THR301IA Wireless freezing or shutting down.



\* The illustrations and LCD screens as shown in this manual are for instructional purposes only, and may appear somewhat different from those on your instrument.

**Notice**

- Use an AB type USB cable of less than 3 meters. USB 3.0 cables cannot be used.
- Be sure to wake the computer from suspended/sleep/standby mode before connecting a computer to the USB jack.
- Always quit all applications that are running on the computer before connecting or disconnecting the USB cable and set the volume output on the computer to its minimum level.
- When connecting or disconnecting the USB cable, be sure to set the OUTPUT controls ([VOLUME] and [MIC/INST VOLUME]) on the THR301IA Wireless to their minimum levels.
- Wait at least 6 seconds between connecting or disconnecting the USB cable.

**Troubleshooting**

**No power:**

- Is the AC adaptor properly connected?
- If the AC adaptor is disconnected, has the THR301IA Wireless been properly charged?

**Cannot connect to the smart device by Bluetooth:**

- Is the LED display turned off or flashes in green? Refer to the reference manual.
- Is the Bluetooth setting correct on the smart device? Refer to the user guide of your smart device.

**No sound is output by wireless connection with a guitar:**

- Are you using the Relay G10T? THR301IA Wireless cannot connect to any guitar wireless transmitter except for the Relay G10T.
- Did you connect the Relay G10T to the INPUT jack located on the top of the THR301IA Wireless for at least 10 seconds? The appropriate channel is set automatically.
- Is the volume control on the instrument turned up?
- Is the Tuner function switched OFF? When the tuner function is set ON, the guitar sound is muted. Press the TUNER TAP button (less than one second) to turn OFF the tuner function.

## Free Manuals Download Website

<http://myh66.com>

<http://usermanuals.us>

<http://www.somanuals.com>

<http://www.4manuals.cc>

<http://www.manual-lib.com>

<http://www.404manual.com>

<http://www.luxmanual.com>

<http://aubethermostatmanual.com>

Golf course search by state

<http://golfingnear.com>

Email search by domain

<http://emailbydomain.com>

Auto manuals search

<http://auto.somanuals.com>

TV manuals search

<http://tv.somanuals.com>