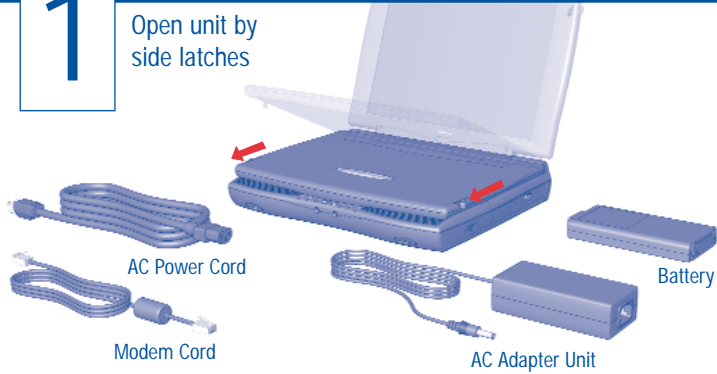
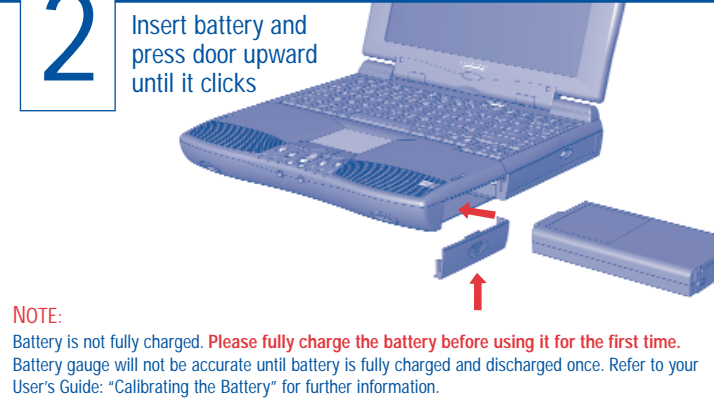


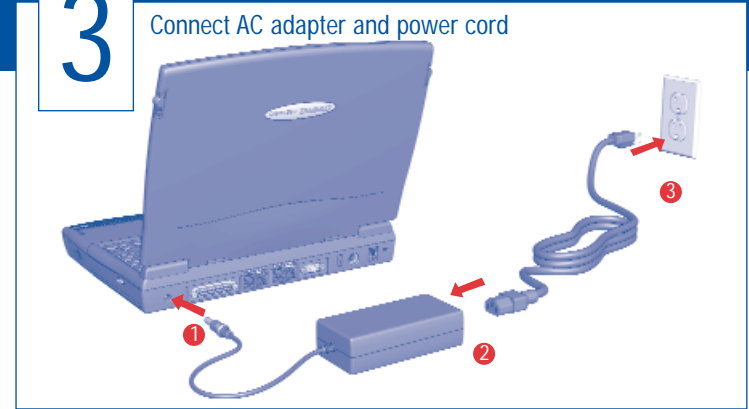
1 Open unit by side latches



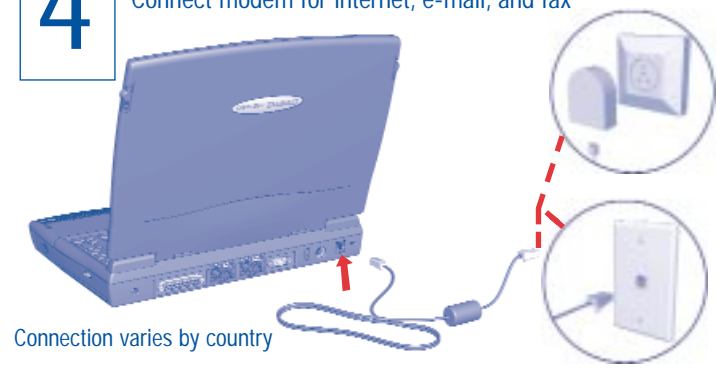
2 Insert battery and press door upward until it clicks



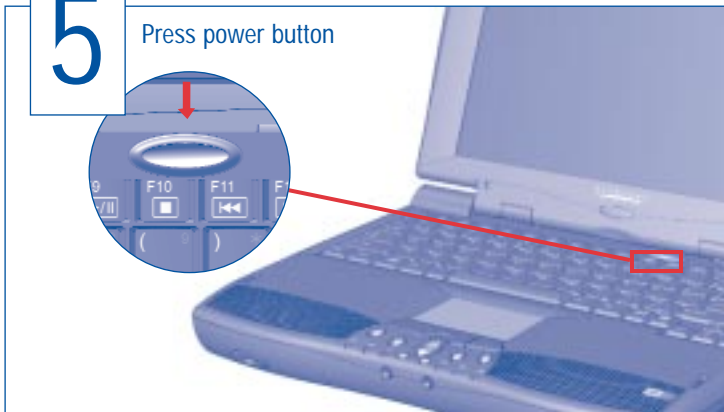
3 Connect AC adapter and power cord



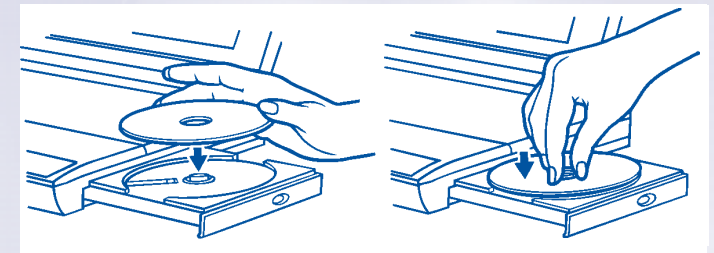
4 Connect modem for internet, e-mail, and fax



5 Press power button



CD/DVD* DRIVE OPERATION



*DVD available on select models

WARNING: Misuse of your personal computer or failure to establish a safe and comfortable workstation may result in discomfort or serious injury. Refer to your User's Guide: "Safety and Comfort" for more information on choosing a workspace and creating a safe and comfortable work environment. To reduce the risk of electrical shock, connect your computer only to a grounded outlet.

153689-031



© 1999 Compaq Computer Corporation. All rights reserved. Printed in the United States, Brazil, Canada, Japan, Singapore, Taiwan, and the United Kingdom. Compaq is registered in the U.S. Patent and Trademark Office. First Edition February 1999.

CAUTION: When inserting a disc into the CD/DVD drive, be sure to press the disc over the center guide on the CD/DVD tray until the disc snaps into place. You can damage the disc or your computer if the disc is not installed properly. Refer to your User's Guide: "Using Your CD/DVD Drive" for further information.



When you turn on your computer for the first time, Windows Setup prompts you to enter your Microsoft **Product Key** number. Enter the number located on the front of your Microsoft Windows 98 guide.

FUNCTION KEYS AND BUTTONS

The function keys on your keyboard perform alternate operations shown in the list below. To access these, press **Fn** plus the appropriate function key (**F1** through **F12**)

Key	Icon	Description
F1		My Presario
F2		Instant Answer
F3		Switches between the display and external monitor
F4		Sleep
F5		Contrast Control Down*
F6		Contrast Control Up*
F7		Brightness Control Down
F8		Brightness Control Up
F9		CD or DVD* Play/Pause
F10		CD or DVD* Stop
F11		CD or DVD* Previous Track
F12		CD or DVD* Next Track

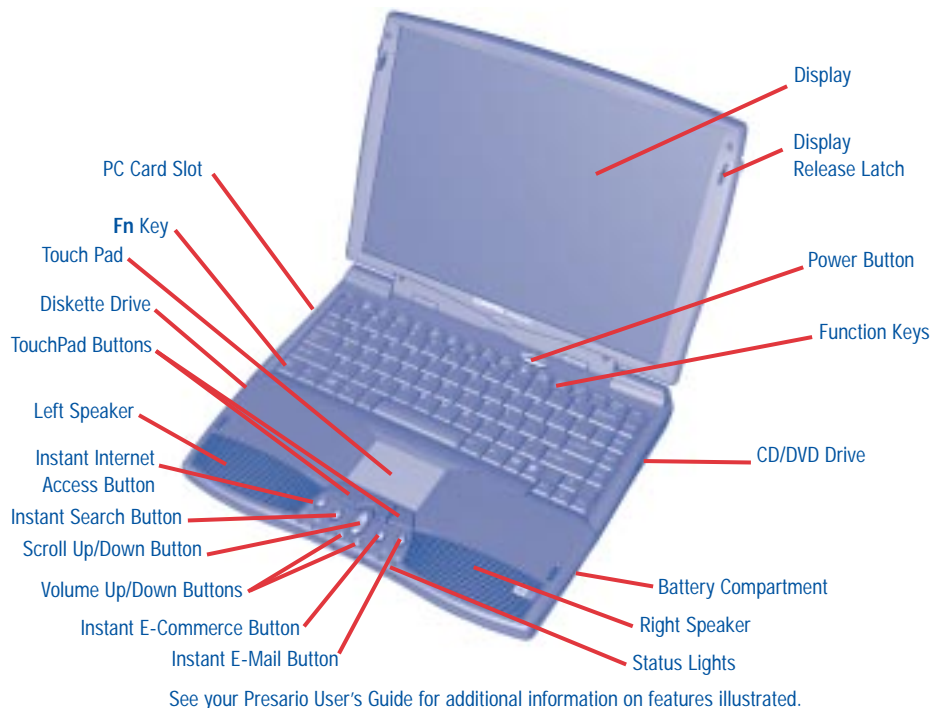
* Available on select models.

Power Button — Press the power button once to turn on your computer. Press the power button again to initiate Hibernation.

Instant Internet, Search, E-Commerce, and E-mail Buttons — These buttons provide a one-stop connection to the Internet, Search, E-Commerce, and E-mail. (Varies by model.)

Volume Buttons — Control the volume with the volume buttons below the touchpad of your computer. Press “+” to increase the volume. Press “-” to decrease the volume.

QUICK REFERENCE

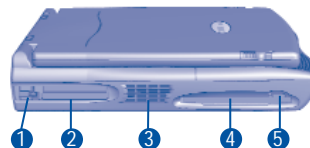


BACK VIEW



- | | |
|------------------------|-------------------------|
| 1 AC Adapter Connector | 6 External Monitor Port |
| 2 USB Port | 7 Parallel/Printer Port |
| 3 Lock | 8 Keyboard/Mouse Port |
| 4 Serial Port | 9 Modem Jack |
| 5 Fan Vent | |

LEFT SIDE VIEW



- | | |
|-----------------------|-------------------------|
| 1 PC Card Eject Lever | 4 Diskette Drive |
| 2 PC Card Slot | 5 Diskette Eject Button |
| 3 Fan Vent | |

STATUS LIGHTS

Your computer has status lights located at the bottom center of the keyboard. Some of the lights are visible when the display panel is open or closed.



Power — Illuminates when the computer is on, and blinks when the computer is in Sleep mode.



Charging — Illuminates when the battery is charging; Flashes when the battery is low.



AC Adapter — Illuminates when you plug in the AC Adapter. When the AC Adapter is plugged in and the battery life is under 100%, the battery is charging.



Num Lock — Illuminates when the Number Lock is on. You can use the embedded numeric keypad to enter numbers.



Caps Lock — Illuminates when the Caps Lock is on. When used, letters are typed in uppercase.



Scroll Lock — Illuminates when the Scroll Lock is on; text that takes up more than a full screen scrolls up the screen line-by-line.

TOUCHPAD

The pointer on the screen follows your finger movements on the touchpad. You can use your finger as a pointer to draw lines or point to items on the desktop. To simulate a mouse-click, press the left touchpad button which is located directly below the touchpad. To double-click on an item, move the pointer over the item and press the left touchpad button twice.

Free Manuals Download Website

<http://myh66.com>

<http://usermanuals.us>

<http://www.somanuals.com>

<http://www.4manuals.cc>

<http://www.manual-lib.com>

<http://www.404manual.com>

<http://www.luxmanual.com>

<http://aubethermostatmanual.com>

Golf course search by state

<http://golfingnear.com>

Email search by domain

<http://emailbydomain.com>

Auto manuals search

<http://auto.somanuals.com>

TV manuals search

<http://tv.somanuals.com>