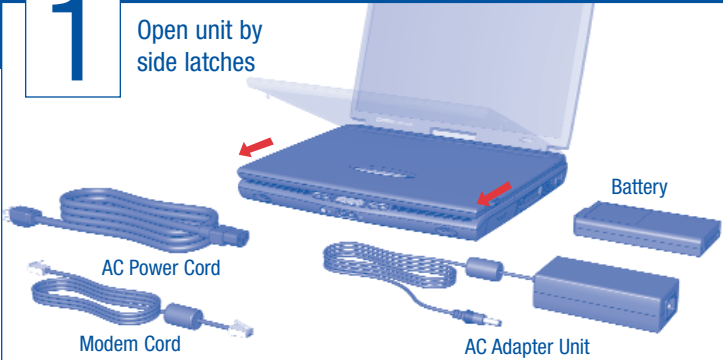


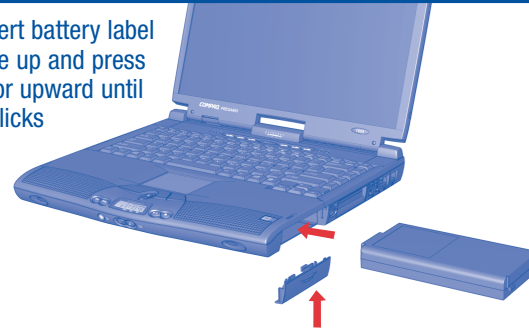
## 1

Open unit by side latches



## 2

Insert battery label side up and press door upward until it clicks

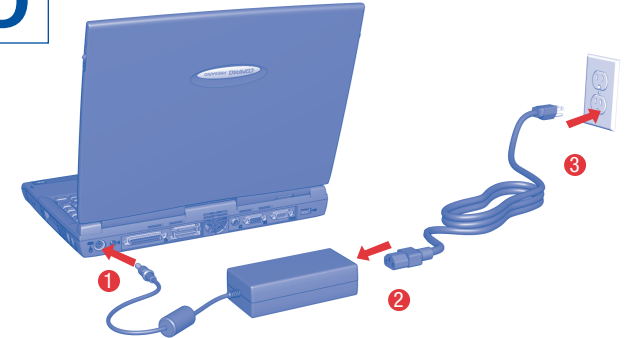


**NOTE:**

Battery is not fully charged. Please fully charge the battery before using it for the first time. Battery gauge will not be accurate until battery is fully charged and discharged once. Refer to your User's Guide: "Calibrating the Battery" for further information.

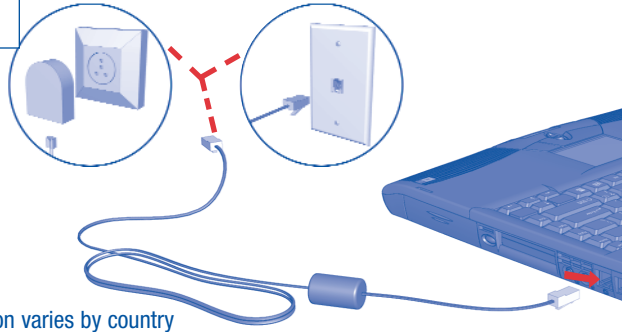
## 3

Connect AC adapter and power cord



## 4

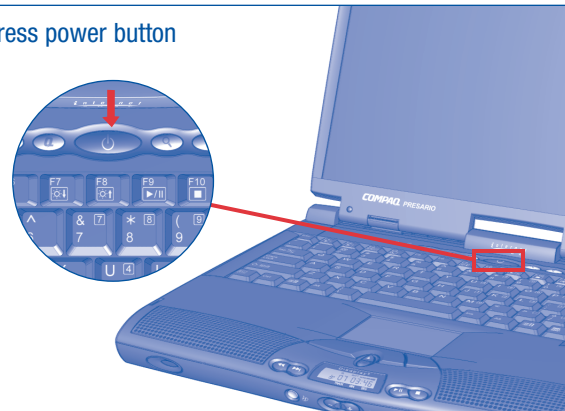
Connect modem for internet, e-mail, and fax



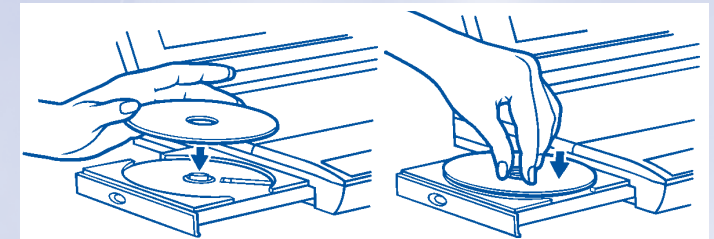
Connection varies by country

## 5

Press power button



### CD/DVD\* DRIVE OPERATION



\*DVD available on select models



When you turn on your computer for the first time, Windows Setup prompts you to enter your Microsoft **Product Key** number. Enter the number located on the front of your Microsoft Windows 98 guide.



**WARNING:**

Misuse of your personal computer or failure to establish a safe and comfortable workstation may result in discomfort or serious injury. Refer to your User's Guide: "Safety and Comfort" for more information on choosing a workspace and creating a safe and comfortable work environment. To reduce the risk of electrical shock, connect your computer only to a grounded outlet.

158566-031



**CAUTION:** When inserting a disc into the CD/DVD drive, be sure to press the disc over the center guide on the CD/DVD tray until the disc snaps into place. You can damage the disc or your computer if the disc is not installed properly. Refer to your User's Guide: "Using Your CD/DVD Drive" for further information.

## FUNCTION KEYS AND BUTTONS

The function keys on your keyboard perform alternate operations shown in the list below. To access these, press **Fn** plus the appropriate function key (**F1** through **F12**)

Key	Icon	Description
<b>F1</b>		User Programmable
<b>F2</b>		User Programmable
<b>F3</b>		Switches between the display and external monitor
<b>F4</b>		Sleep
<b>F5</b>		Contrast Control Down*
<b>F6</b>		Contrast Control Up*
<b>F7</b>		Brightness Control Down
<b>F8</b>		Brightness Control Up
<b>F9</b>		CD or DVD** Play/Pause
<b>F10</b>		CD or DVD** Stop
<b>F11</b>		CD or DVD** Previous Track
<b>F12</b>		CD or DVD** Next Track

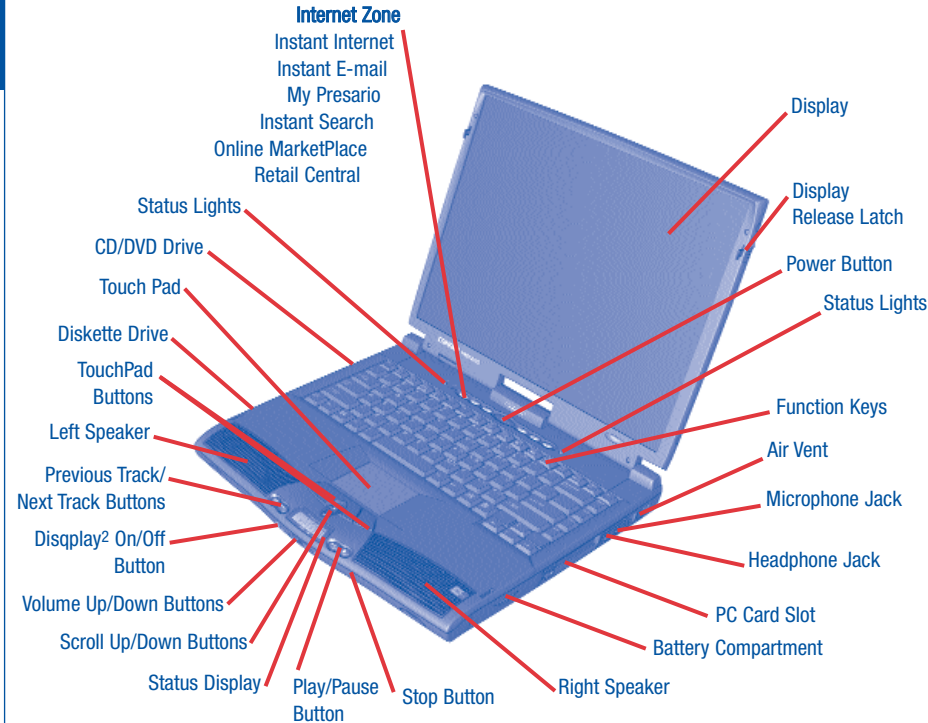
\*Functional only on models with HPA displays.  
\*\*Available on select models.

**Power Button** — Press the power button once to turn on your computer. Press the power button again to initiate Hibernation.

**Instant Internet, E-mail, My Presario, Search, Online MarketPlace, and Retail Central Buttons** — These buttons provide a one-stop connection to the Internet, E-mail, My Presario, Search, Online MarketPlace, and Retail Central. (Varies by model.)

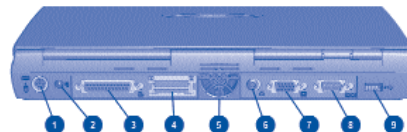
**Volume Buttons** — Control the volume with the volume buttons on the front of your computer. Press “+” to increase the volume. Press “-” to decrease the volume.

## QUICK REFERENCE



See your Presario User's Guide for additional information on features illustrated.

### BACK VIEW



- 1 Mouse/Keyboard Port
- 2 AC Adapter Connector
- 3 Printer/Parallel Port
- 4 Port Replicator Connector
- 5 Fan Vent
- 6 TV Out Connector
- 7 VGA Port
- 8 Serial Port
- 9 USB Port

### LEFT SIDE VIEW



- 1 Security Slot
- 2 CD or DVD Drive
- 3 CD or DVD Eject Button
- 4 CD or DVD Manual Eject
- 5 Diskette drive\*
- 6 Diskette Eject button\*

\*A SuperDisk drive is available on some models.

## STATUS DISPLAY/LIGHTS

Your computer has status lights and icons located at the bottom center of the computer and top of the keyboard.



**Power** — Main power is on. Disqplay<sup>2</sup> will not play when your computer is turned on.



**Battery Charging** — Illuminates when the battery is charging.



**Battery Gauge** — The battery is inserted. The amount of power remaining in the battery is displayed in 25 percent increments. The battery gauge will start blinking when your battery has less than 10 percent of power remaining.



**Sleep** — The computer is in Sleep mode. Disqplay<sup>2</sup> will not play when your computer is in Sleep mode.



**Disqplay<sup>2</sup>** — Disqplay<sup>2</sup> is turned on.



**AC Adapter** — Illuminates when the AC Adapter is plugged in. When the AC Adapter is plugged in and the battery life is under 100%, the battery is charging.



**Caps Lock** — Illuminates when the Caps Lock is on. When used, letters are typed in uppercase.



**Num Lock** — Illuminates when the Number Lock is on. You can use the embedded numeric keypad to enter numbers.



**Scroll Lock** — Illuminates when the Scroll Lock is on; text that takes up more than a full screen scrolls up the screen line-by-line.

## TOUCHPAD

The pointer on the screen follows your finger movements on the touchpad. You can use your finger as a pointer to draw lines or point to items on the desktop. To simulate a mouse-click, press the left touchpad button which is located directly below the touchpad. To double-click on an item, move the pointer over the item and press the left touchpad button twice.

## Free Manuals Download Website

<http://myh66.com>

<http://usermanuals.us>

<http://www.somanuals.com>

<http://www.4manuals.cc>

<http://www.manual-lib.com>

<http://www.404manual.com>

<http://www.luxmanual.com>

<http://aubethermostatmanual.com>

Golf course search by state

<http://golfingnear.com>

Email search by domain

<http://emailbydomain.com>

Auto manuals search

<http://auto.somanuals.com>

TV manuals search

<http://tv.somanuals.com>