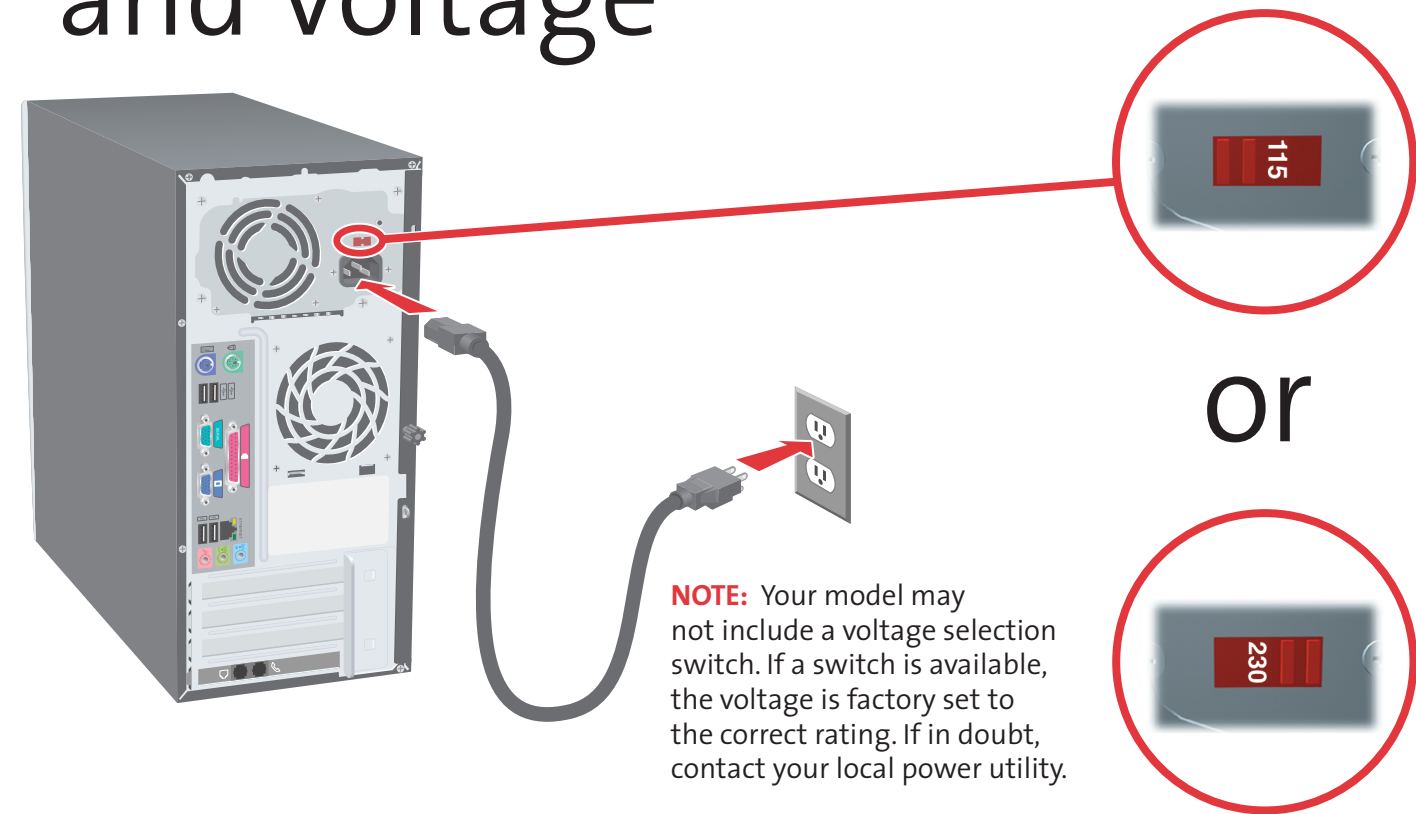


7 Power and Voltage

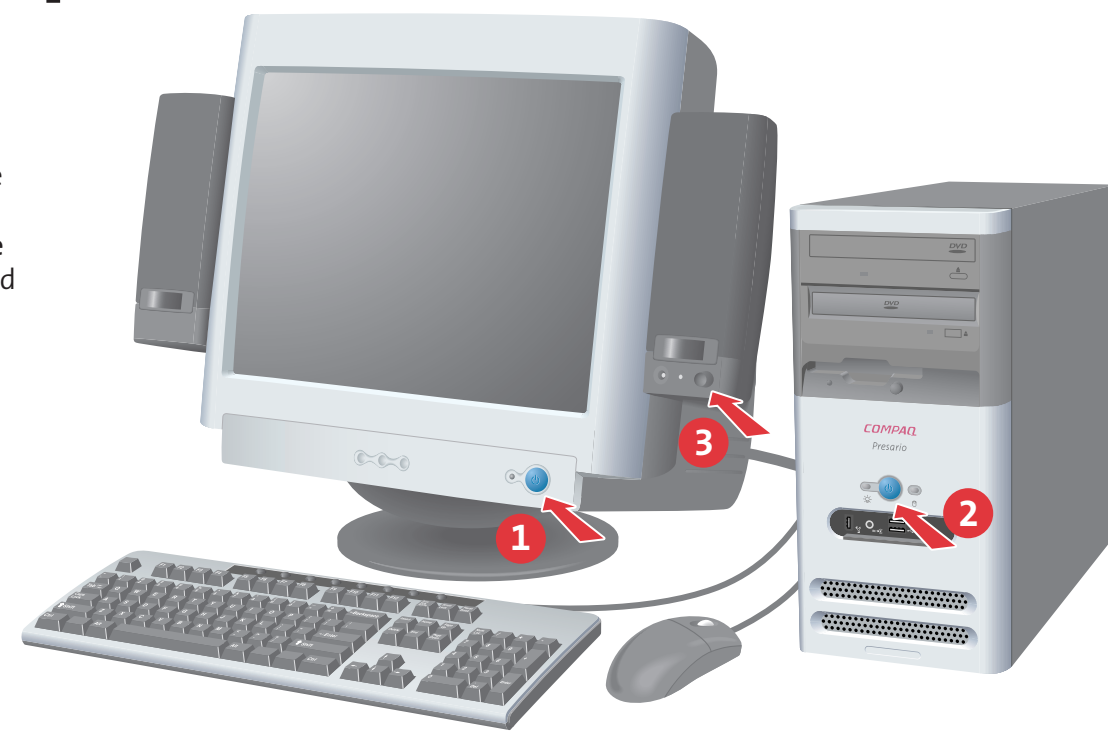


NOTE: Your model may not include a voltage selection switch. If a switch is available, the voltage is factory set to the correct rating. If in doubt, contact your local power utility.

8 Start Up

IMPORTANT: When the computer starts, the system automatically converts the file system on your hard drive. The conversion may take several minutes. **Do not stop the process.** When the conversion is completed the computer restarts.

When prompted, begin your product registration process. Online instructions guide you through the registration and preinstalled software setup process. The setup time varies by computer configuration.



The rating label on the device shows which FCC class (A or B) the equipment falls into. Only Class B devices have an FCC logo or FCC ID on the label. Refer to the corresponding statement for your class. For complete details, read the Safety and Regulatory Information contained in the *Warranty and Support Guide*.

©2003 Hewlett-Packard Development Company, L.P. COMPAQ, Compaq, the Compaq logo and Presario are trademarks of Hewlett-Packard Development Company, L.P. in the United States and other countries/regions. All other product names mentioned herein may be trademarks of their respective companies. Nothing herein should be construed as constituting an additional warranty.



Presario S0000 Series

Quick Setup



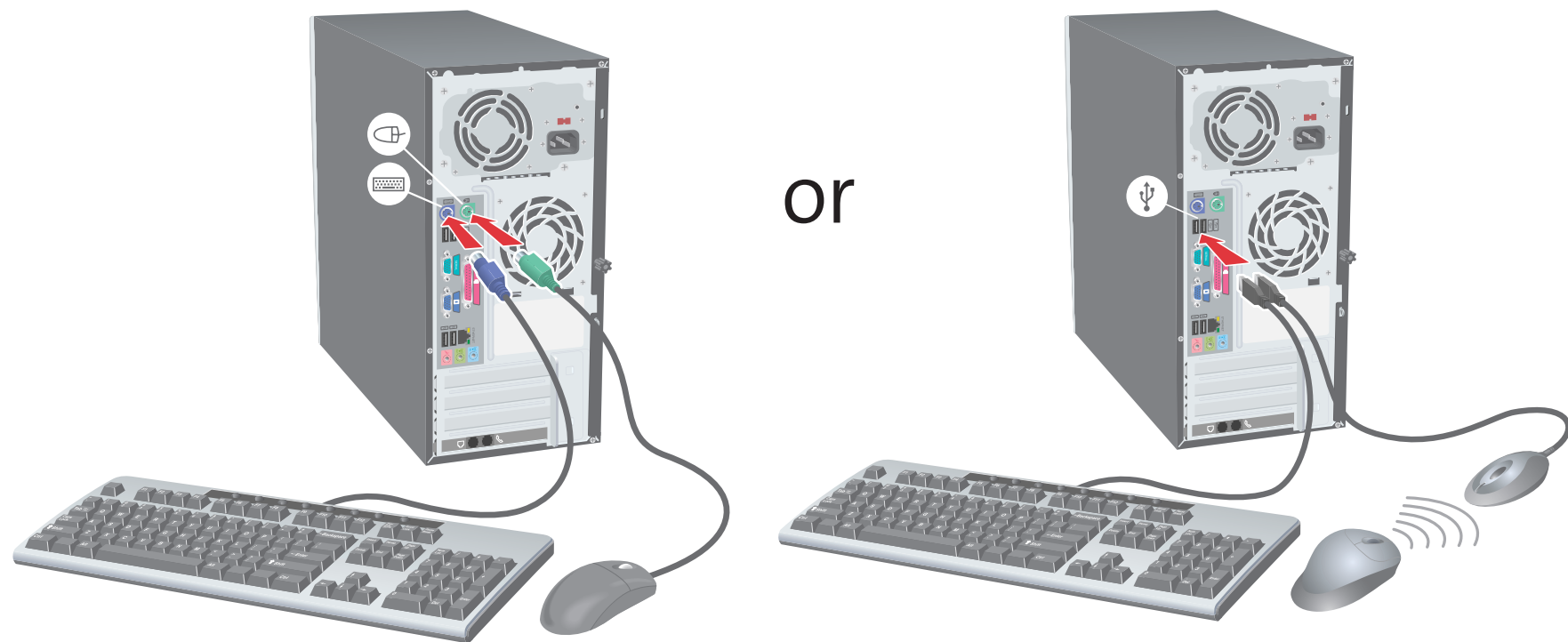
COMPAQ

1 Contents

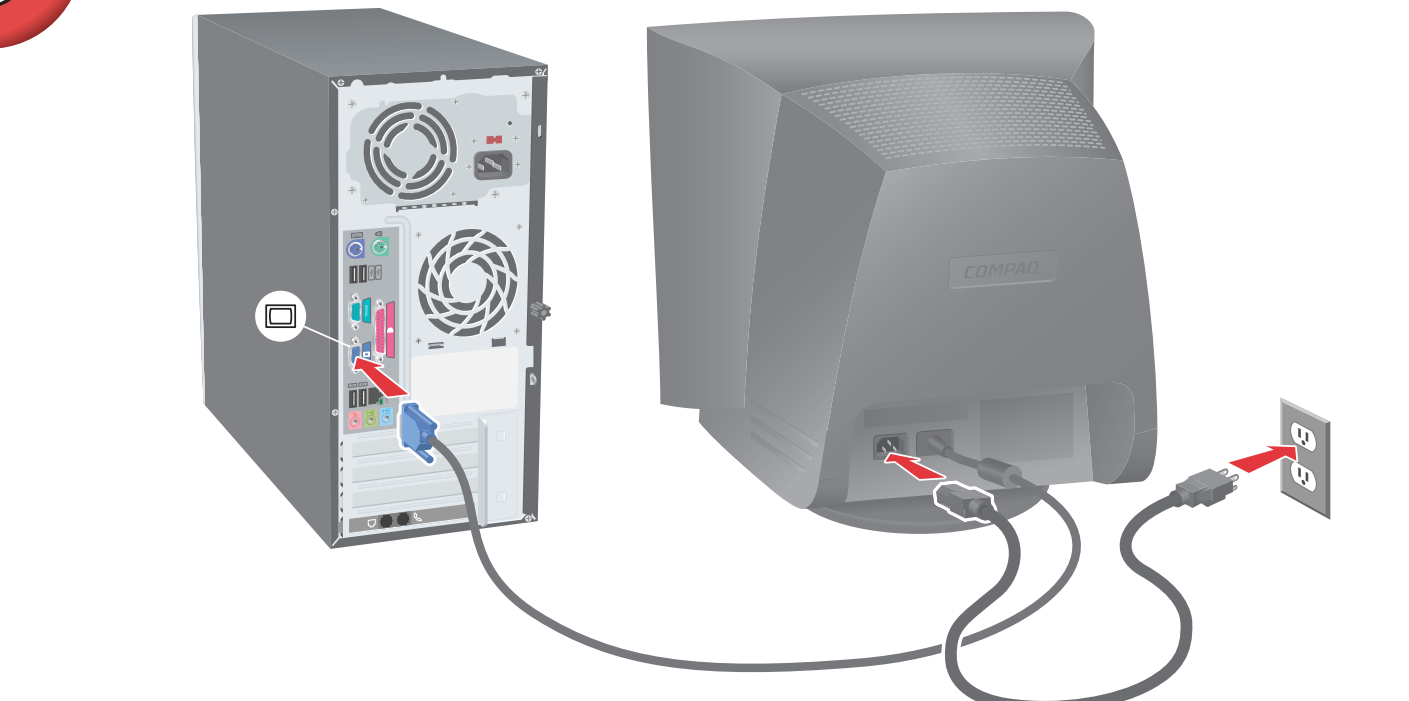


NOTE: Connectors may vary by model. Printers, network connectivity, and other accessories should be connected only after computer setup and registration are complete.

2 Keyboard and Mouse

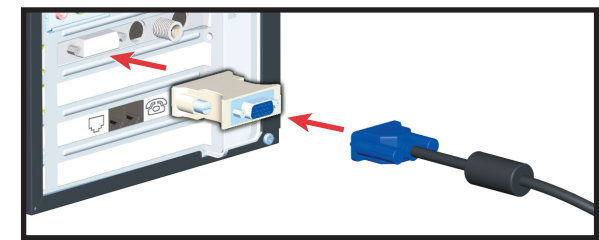


3 Monitor

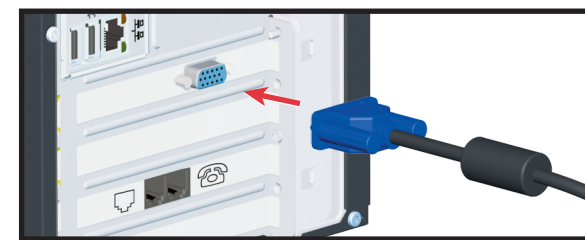


With ALL-IN-WONDER CARD® RADEON™

With graphics card

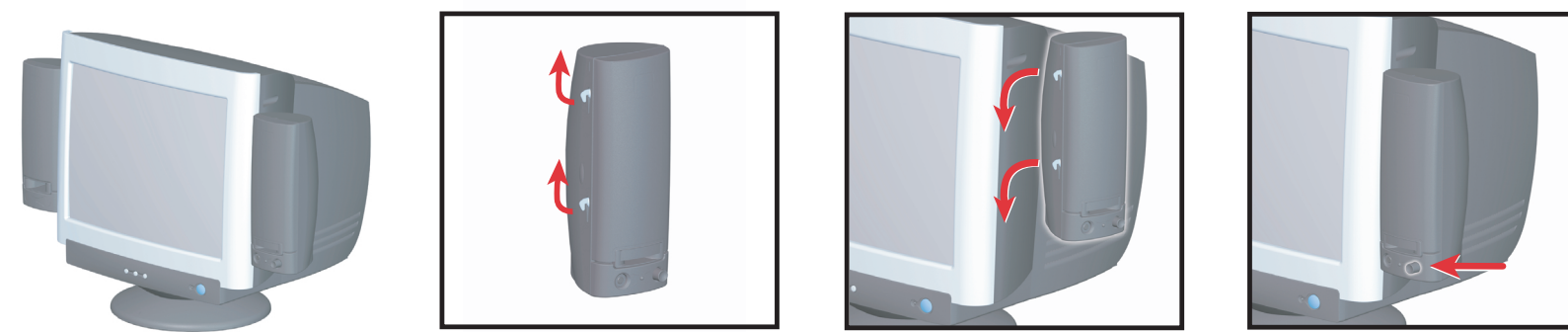


or



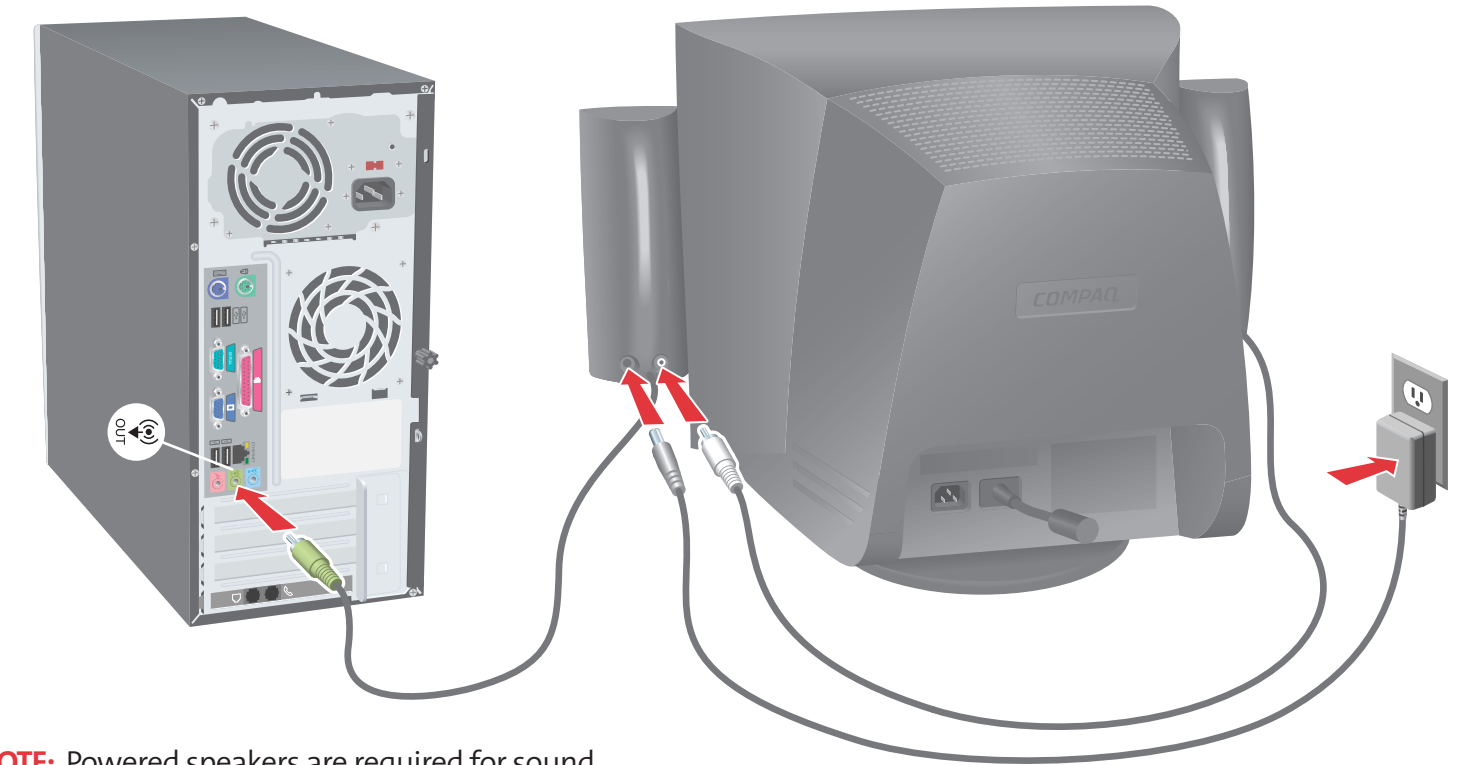
Locate adapter in your HP AIW Radeon accessory kit.

4 Attaching Speakers



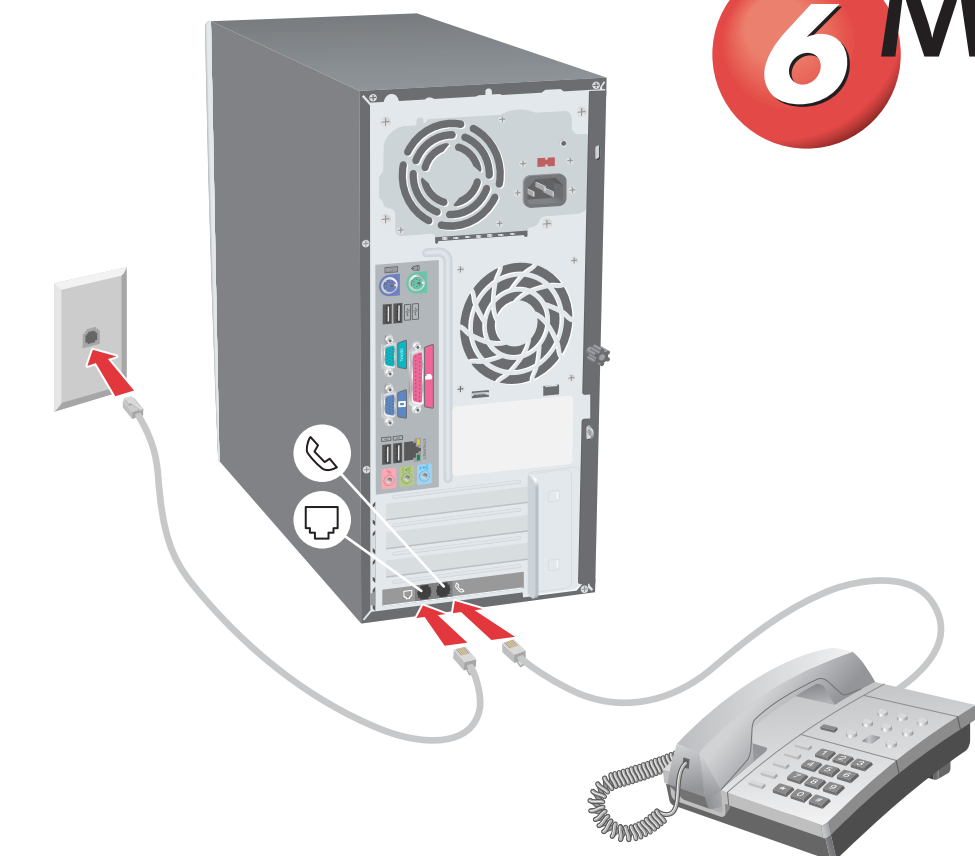
NOTE: To install other types of speakers that were purchased with your computer, follow the instructions provided with the speakers. Multi-channel speakers ship separately from your PC. An AC adapter may be included with some speaker sets. Powered speakers (included in Compaq FS and MV series monitors) are required. Some monitors do not accommodate hanging speakers.

5 Connecting Speakers



NOTE: Powered speakers are required for sound.

6 Modem



Free Manuals Download Website

<http://myh66.com>

<http://usermanuals.us>

<http://www.somanuals.com>

<http://www.4manuals.cc>

<http://www.manual-lib.com>

<http://www.404manual.com>

<http://www.luxmanual.com>

<http://aubethermostatmanual.com>

Golf course search by state

<http://golfingnear.com>

Email search by domain

<http://emailbydomain.com>

Auto manuals search

<http://auto.somanuals.com>

TV manuals search

<http://tv.somanuals.com>