



Welcome to Cranium Giggle Gear

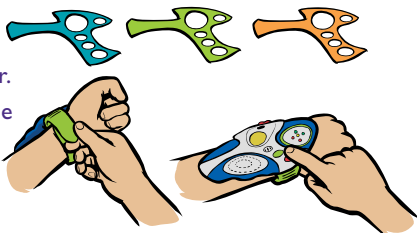
# Galactic Communicator

A voice recorder and morpher!

## GET STARTED

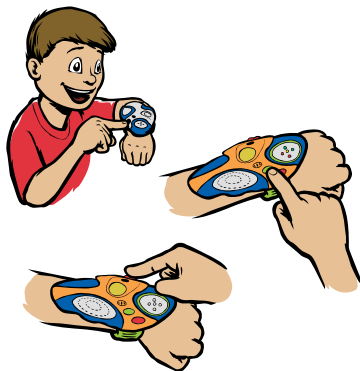
### 1 Assemble the Communicator

- Take out the Communicator and the three covers.
- Choose a cover and snap it on your Communicator.
- Put the Communicator on your wrist and adjust the strap to fit comfortably.
- Turn on the Communicator by pressing the green play or red record button.



### 2 Record and Play Back

- Press and hold the red record button. Listen for the beep. Say something funny!
- When recording time is up, you will hear two beeps.
- Release the record button.
- Turn the dial to pick an alien language.
- Press the green play button. Your voice sounds like an alien!
- Turn the dial to pick a new language. Press play again.
- Now go and make someone giggle. Have fun!



*Your Communicator will turn off after 90 seconds if you're not recording or playing back your voice. Press the play or record button to turn it back on!*

For even more fun, visit [cranium.com](http://cranium.com)!

# TROUBLESHOOTING

Are you having trouble with your Galactic Communicator?

If your Galactic Communicator won't turn on, play, or record, or the sound is garbled, try installing three new AAA batteries.

If you've tried this step and you're still having trouble ...

In the U.S., go to [cranium.com/support](http://cranium.com/support) or call 1-877-CRANIUM

Outside the U.S., go to [cranium.com/worldwidesupport](http://cranium.com/worldwidesupport)

We value your input and we'll do our best to help!

WARNING: CHANGES OR MODIFICATIONS TO THIS UNIT NOT EXPRESSLY APPROVED BY THE PARTY RESPONSIBLE FOR COMPLIANCE COULD VOID THE USER'S AUTHORITY TO OPERATE THE EQUIPMENT.

**NOTE:** This equipment has been tested and found to comply with the limits for a Class B digital device, pursuant to Part 15 of the FCC rules and EMC regulations. Conforms to the requirements of EN 50088. These limits are designed to provide reasonable protection against harmful interference in a residential installation. This equipment generates, uses, and can radiate radio frequency energy and, if not installed and used in accordance with the instructions, may cause harmful interference to radio communications. However, there is no guarantee that interference will not occur in a particular installation. If this equipment does cause harmful interference to radio or television reception, which can be determined by turning the equipment off and on, the user is encouraged to try to correct the interference by one or more of the following measures:

- Reorient or relocate the receiving antenna.
- Increase the separation between the equipment and receiver.
- Consult the dealer or an experienced radio/TV technician for help.

## CHANGING THE BATTERIES

Need to change the batteries? Ask an adult to get three AAA batteries and follow these instructions:

1. Turn over your Galactic Communicator and unscrew the battery cover.
2. Insert the batteries as indicated.
3. Replace the battery cover and tighten the screw.

## BATTERY SAFETY

- Do not put the batteries in backwards. Positive (+) and negative (-) ends must be inserted in the correct directions following the polarity (+/-) diagram in the battery compartment.
- Do not mix alkaline, standard (carbon-zinc), or rechargeable (nickel-cadmium) batteries.
- Only batteries of the same or equivalent type as recommended are to be used.
- Do not mix old and new batteries.
- Rechargeable batteries must be removed before recharging.
- Rechargeable batteries must be recharged by an adult only.
- Batteries must be installed and removed by an adult only.
- Remove exhausted batteries and dispose of them properly.
- Do not try to recharge non-rechargeable batteries.
- The supply terminals are not to be short-circuited.

**PLOZ**  
aliens live in  
square houses  
and eat square  
food!

**FOOB**  
aliens love to  
have fun and  
make messes!

**ZARG**  
aliens zoom  
through space  
in polka-dot  
rockets!

**BORP**  
aliens eat  
broccolorps  
and tell lots of  
stories!



**WARNING:**  
**CHOKING HAZARD — Small parts.**  
**Not for children under 3 years.**

**MIRF**  
aliens talk  
all day long!

**WARNING: TO AVOID  
BATTERY LEAKAGE**  
Please follow these battery usage  
instructions. Failure to follow these  
instructions can result in battery  
acid leakage that may cause burns,  
personal injury, and property damage.

© 2007 CRANIUM, INC. ALL RIGHTS RESERVED. CRANIUM CHARACTER ILLUSTRATIONS © 1998, 2001 **BASEMAN™**. THE FOLLOWING ARE TRADEMARKS OR REGISTERED TRADEMARKS OF CRANIUM, INC. IN THE U.S. AND/OR OTHER JURISDICTIONS: CRANIUM, CREATIVE CAT, DATA HEAD, EVERYONE SHINES, GIGGLE GEAR, STAR PERFORMER, WORD WORM, THE CRANIUM LOGO, AND THE BRAIN LOGO. WE PACK EVERY CRANIUM TOY WITH A VARIETY OF OUTRAGEOUS ACTIVITIES. IT'S UP TO YOU TO USE CAUTION, PLAY IT SMART, AND HAVE FUN.

For even more fun, visit [cranium.com](http://cranium.com)!

## Free Manuals Download Website

<http://myh66.com>

<http://usermanuals.us>

<http://www.somanuals.com>

<http://www.4manuals.cc>

<http://www.manual-lib.com>

<http://www.404manual.com>

<http://www.luxmanual.com>

<http://aubethermostatmanual.com>

Golf course search by state

<http://golfingnear.com>

Email search by domain

<http://emailbydomain.com>

Auto manuals search

<http://auto.somanuals.com>

TV manuals search

<http://tv.somanuals.com>