



Part Number: 08K8621

---

**ThinkPad i Series 1400/1500  
Quick Reference and Service  
Information**

---

Your Name:

---

Company Name:

---

Model Number:

---

Serial Number:

---

Place of Purchase:

---

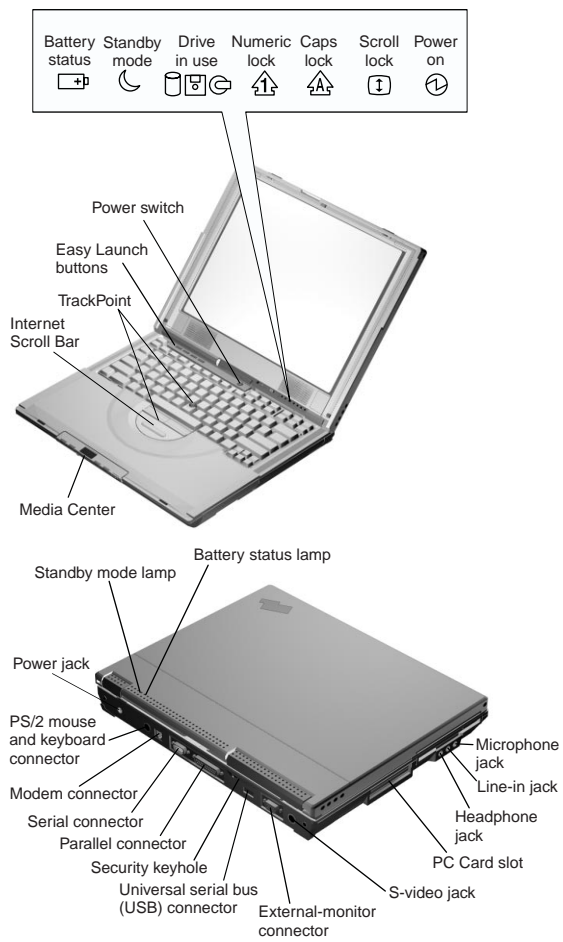
IBM Service Website:

---

IBM Service Number:

---

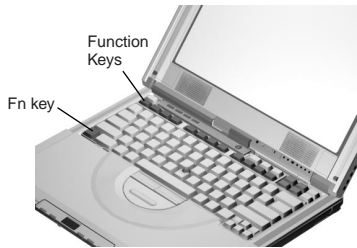
## Location



---

## Function Keys

You can change operational features instantly using the following Fn key and function key combinations:



Fn +	Result
F1	The User Control Help screen appears. The <b>User Control Help</b> screen shows the different user control features of the computer, including the Easy Launch buttons and the Media Center.
F2	The Power Management Properties window appears.
F4	The computer enters sleep mode.
F7	The display output location changes.
Home	The screen brightness increases.
End	The screen brightness decreases.
Insert	The screen contrast increases.
Delete	The screen contrast decreases.

**Note:** The contrast feature is available only on select models.

---

## Getting Service

**Always read the Solving Computer Problems chapter of your *User's Reference* before calling IBM.**

During the warranty period, you can get help and information from the International Warranty Service (IWS) in your country. Before you call, fill out the front of this card. Also have:



- Exact wording of any error messages
- Hardware and software configuration information
- Description of the problem
- Information and serial numbers of any options installed on your system

## International Warranty Service

This IBM product is eligible for service internationally wherever your machine type is sold by IBM. Your computer must be registered to receive international service. To register, call one of the following IWS offices:

Southeast Asia, Australia, New Zealand, and Hong Kong:	61-2-9354-4171
Canada, Latin America, and the U.S.:	1-800-497-7426
	or
	248-740-1215
Europe, Middle East, and Africa:	44-1475-893638
Japan, Korea, China (except Hong Kong), and Taiwan:	81-462-73-7598

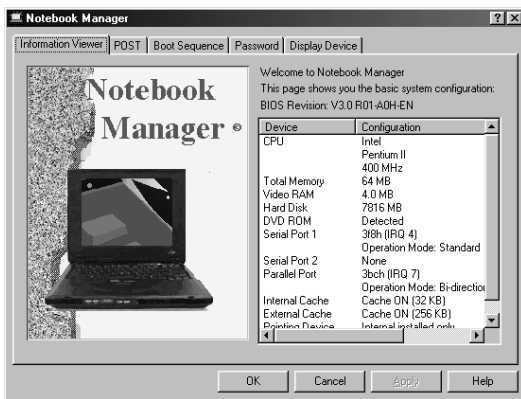
## Help through a ThinkPad Web Site

- The latest information about ThinkPad computers:  
 <http://www.ibm.com/thinkpad>
- Technical support information:  
 <http://www.ibm.com/support>

---

## Notebook Manager Program

You can manipulate your hardware system settings with the Notebook Manager program. To start the Notebook Manager program, click **Start**, move the cursor to **Programs**, **Notebook Manager**, then click **Notebook Manager**.



For more information, click the **Help** button.

---

## TrackPoint Setting

You can customize such TrackPoint function as **Press-to Select**, **Sensitivity**, and **Scrolling**. Click **Start**, move the cursor to **Settings**, **Control Panel**, then double-click the **TrackPoint** icon.

---

## Battery Status

You can see the battery status through the Windows 98 Power Management Properties window. To view this window, press **Fn+F2**.

---

## For Further Information

You can find the following information in your ThinkPad user's manuals:

#### **User's Reference**

- Getting familiar with your computer
- Extending the features of your computer
- Protecting your computer
- Solving computer problems
- Getting service
- Features and specifications
- Product warranties and notices

#### **Online User's Guide**

- Using your computer outside your home country
- Using audio, modem and DVD features
- Protecting your computer
- Using your computer with a battery pack
- Using your computer with a PC Card
- Resolving system resource conflicts
- Solving computer problems
- Installing software
- Handling the ThinkPad
- Getting service

**Note:** To see the Online User's Guide, click **Start**, move the cursor to **Programs, ThinkPad i Series 1400/1500**, then click **ThinkPad i Series 1400/1500 User's Guide**.

## Free Manuals Download Website

<http://myh66.com>

<http://usermanuals.us>

<http://www.somanuals.com>

<http://www.4manuals.cc>

<http://www.manual-lib.com>

<http://www.404manual.com>

<http://www.luxmanual.com>

<http://aubethermostatmanual.com>

Golf course search by state

<http://golfingnear.com>

Email search by domain

<http://emailbydomain.com>

Auto manuals search

<http://auto.somanuals.com>

TV manuals search

<http://tv.somanuals.com>