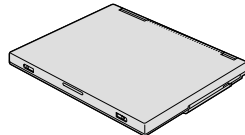


IBM® ThinkPad® T Series Setup Guide

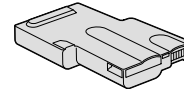
Checklist for unpacking

Thank you for purchasing the IBM ThinkPad T Series computer. Match the items on this list with the items in the box. If any item is missing or damaged, please contact your place of purchase.

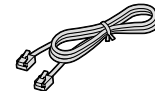
Computer



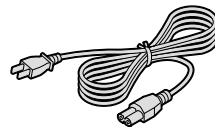
Battery pack



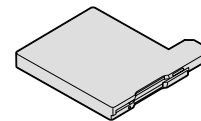
Telephone cable



Power cord

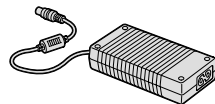


Diskette drive



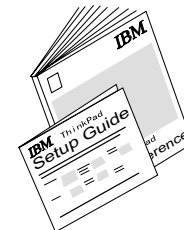
Note: Some models may contain additional items that are not listed.

AC adapter



Books:

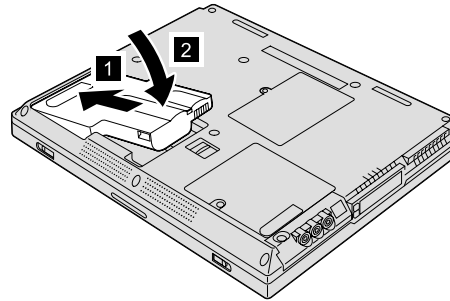
- Setup Guide
- Service and Troubleshooting Guide
- Manual package for Microsoft® Windows®



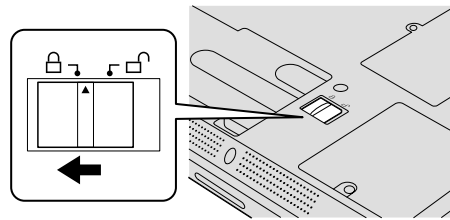
Setting up your computer

1. Installing the battery.

a) Align the side of the battery with the side of the battery compartment in the computer **1**; then gently push the battery into the compartment **2**.

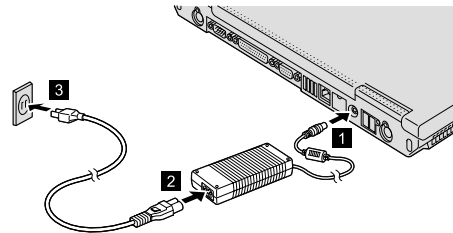


b) Slide the battery latch to lock it.



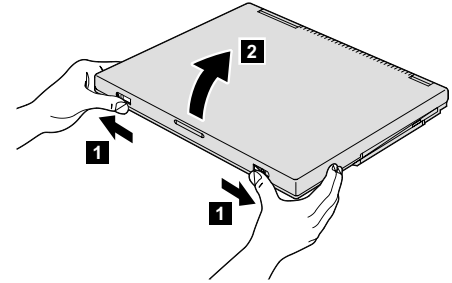
2. Connecting to a power source.

Connect the ac adapter to the computer's power jack (at the rear of the computer). Make the connections in the order shown.

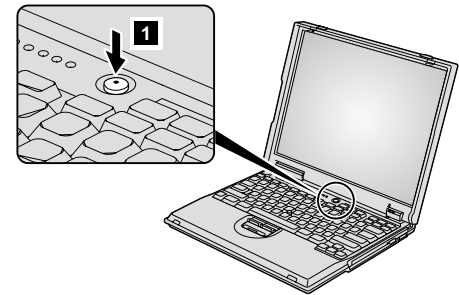


3. Turning on the system.

a) Open the computer display. Press the latches **1** and open the display **2**. Then position the display so that it is convenient for viewing.



b) Press the power switch **1**.



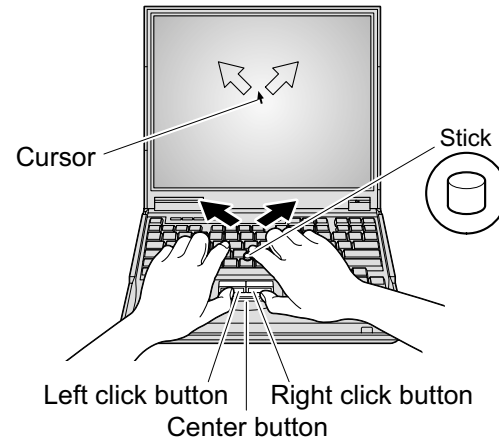
4. Using the TrackPoint®.

The TrackPoint is a unique device for moving the cursor on the screen. Using the TrackPoint, you can perform all of the operations of a mouse. The left and right buttons function like the left and right buttons on a mouse.

To move the cursor, use the TrackPoint pointer at the center of the keyboard. Press gently with your left or right index finger in the direction you want to move the cursor. To select and drag an object, press and hold one of the buttons with either thumb, as required by your software.

Click means to press the left button once. **Double-click** means to press the left button twice within 1 second.

For more information about the TrackPoint, press the ThinkPad button to open Access ThinkPad, your on-board help system.



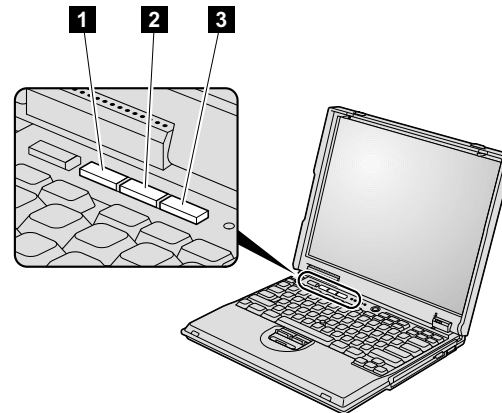
5. Using the volume control.

You can adjust the sound level produced by the built-in speakers by using the following three buttons:

- 1** Volume down
- 2** Volume up
- 3** Mute

If you mute the sound and then turn off your computer, the sound will remain muted when you turn on your computer again. To turn on the sound, press the **Volume up** or **Volume down** button.

When you press one of these buttons, the volume indicator appears on the screen for a few seconds. For more information on volume control, see the on-board help system, Access ThinkPad.



6. Setting up Windows.

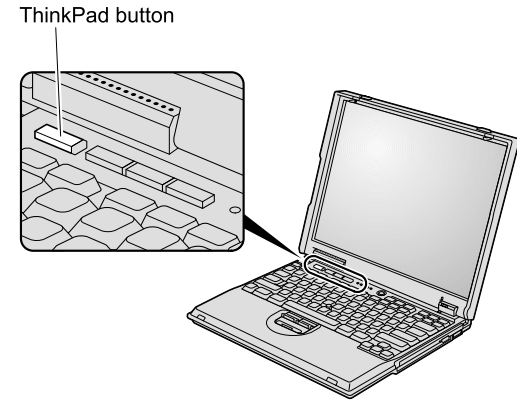
Your computer comes with a Microsoft Windows 2000 or 98 operating system. After turning on your computer, follow the instructions on the screen to set up the operating system. This procedure takes approximately 30 minutes, and your computer restarts several times.

7. Using Access ThinkPad.

Whenever you have a question about your computer, or wish to view IBM Web sites, simply press the ThinkPad button to open Access ThinkPad.

Access ThinkPad is the comprehensive, on-board help and information center for your computer. It travels with you, eliminating the need to carry reference manuals.

Find information about your ThinkPad computer and its features by using the Quick Search or clicking one of the topics shown. Click one of the Internet buttons for direct access to help and support, tips from other mobile users, and information about accessories, software and upgrades.



Service and Support information

Getting help around the world

International Warranty Service (IWS) is available for customers who are moving products or traveling to countries where their product (as identified by the 4-digit machine type) is sold and serviced by IBM or IBM-authorized representatives. Warranty service delivery methods of the country providing the service will be in effect. IBM reserves the right to change or modify its service delivery methods by country at any time without notice. Service procedures differ by country, and some service and parts may not be available in all countries because of the laws of that particular country. In some countries, fees may apply to service provided on-site in remote locations.

To register, call one of the following IWS Offices:

Southeast Asia, Australia, New Zealand, and Hong Kong: 61-2-9354-4171

Canada, Latin America, and the U.S.: 1-800-497-7426 or 248-740-1215

Europe, Middle East, and Africa: 44-1475-893638

Japan, Korea, China (except Hong Kong), and Taiwan: 81-462-215-7598

The IWS office will issue an International Warranty Service Certificate, which you can use wherever IBM or IBM resellers sell and service this product.

Your name:

Company name:

Model number:

Serial number:

Company or reseller service:

IBM service Web site:

IBM service number:

Notes:

Trademarks

The following terms are trademarks of the IBM Corporation in the United States or other countries or both:

IBM

ThinkPad

TrackPoint

Microsoft and Windows are trademarks of Microsoft corporation in the United States and/or other countries.

Free Manuals Download Website

<http://myh66.com>

<http://usermanuals.us>

<http://www.somanuals.com>

<http://www.4manuals.cc>

<http://www.manual-lib.com>

<http://www.404manual.com>

<http://www.luxmanual.com>

<http://aubethermostatmanual.com>

Golf course search by state

<http://golfingnear.com>

Email search by domain

<http://emailbydomain.com>

Auto manuals search

<http://auto.somanuals.com>

TV manuals search

<http://tv.somanuals.com>