

Océ Operations Guide

English version



Océ OP15 Printing System Functions

Operations Guide



Printing System (K)

INSTRUCTION HANDBOOK

<Functions Edition>

Introduction

Chapter 1 Printer-related operation

- 1. Printer Settings (15 ppm copier)
- 2. Printer Settings (20 ppm copier)
- 3. Memory Card / RAM Disk

Chapter 2 Software-related operation

- 1. Procedure for Installing and Printing with a Printer Driver
- 2. Windows XL Driver
- 3. Printer Driver for Windows 95/98
- 4. Printer Driver for Windows NT
- 5. Printer Driver for Windows 2000
- 6. Printer Driver for Macintosh

Introduction


About this On-Line Manual

This On-Line Manual is included with your Printing System (K) and should be read in combination with the Instruction Handbook <Set-Up Edition> for that product.

This manual contains information on making settings in your printer, as well as on installing and setting the printing properties for the corresponding Printer Drivers.

The explanations in this manual were written with the assumption that the user has a basic understanding of how to work in Microsoft Windows. For further information on using Windows, refer to your Microsoft Windows manual.

Trademark Information

- PRESCRIBE is a registered trademark of Kyocera Corporation.
- PRESCRIBE 2e and KPDL2 are trademarks of Kyocera Corporation.
- MS-DOS, Windows and Windows NT are trademarks of Microsoft Corporation.
- PCL and PJI are registered trademarks of Hewlett-Packard Company.
- PostScript is a registered trademark of Adobe Systems Incorporated.
- Ethernet is a registered trademark of Xerox Corporation.
- Novell and NetWare are registered trademarks of Novell, Inc.
- Centronics is a trademark of Centronics Data Computer Corporation.
- IBM and IBM PC-AT are trademarks of International Business Machines Corporation.
- PowerPC is a trademark of International Business Machines Corporation of America and other corporations.
- TrueType and Macintosh are registered trademarks of Apple Computer, Inc.
- AppleTalk is a trademark of Apple Computer, Inc.
- This product was developed using Tornado, the real-time operating system (ROTS) general development environment from Wind River Systems, Inc.
- This printer uses PeerlessPrintXL, a PCL compatibility system developed by Peerless Group, to emulate the HP LaserJet Printer Control Language (PCL6). PeerlessPrintXL is a trademark of Peerless Group (Redondo Beach, CA 90278, U.S.A.).
- **AGFA**  Contains UFST™ and MicroType® from Agfa Corporation.

All other company and product names contained in this Instruction Handbook are trademarks or registered trademarks of their respective companies. The designations ™ and ® will not be used in this handbook.

All rights reserved. No part of this material may be reproduced or transmitted in any form or by any means, electronic or mechanical, including photocopying, recording or by any information storage and retrieval system, without permission in writing from the Publisher.

Legal Restriction On Copying

- It may be prohibited to copy copyrighted material without permission of the copyright owner.
- It is prohibited under any circumstances to copy domestic or foreign currencies.
- Copying other items may be prohibited.

IBM PROGRAM LICENSE AGREEMENT

THE DEVICE YOU HAVE PURCHASED CONTAINS ONE OR MORE SOFTWARE PROGRAMS ("PROGRAMS") WHICH BELONG TO INTERNATIONAL BUSINESS MACHINES CORPORATION ("IBM"). THIS DOCUMENT DEFINES THE TERMS AND CONDITIONS UNDER WHICH THE SOFTWARE IS BEING LICENSED TO YOU BY IBM. IF YOU DO NOT AGREE WITH THE TERMS AND CONDITIONS OF THIS LICENSE, THEN WITHIN 14 DAYS AFTER YOUR ACQUISITION OF THE DEVICE YOU MAY RETURN THE DEVICE FOR A FULL REFUND. IF YOU DO NOT SO RETURN THE DEVICE WITHIN THE 14 DAYS, THEN YOU WILL BE ASSUMED TO HAVE AGREED TO THESE TERMS AND CONDITIONS.

The Programs are licensed not sold. IBM, or the applicable IBM country organization, grants you a license for the Programs only in the country where you acquired the Programs. You obtain no rights other than those granted you under this license.

The term "Programs" means the original and all whole or partial copies of it, including modified copies or portions merged into other programs. IBM retains title to the Programs. IBM owns, or has licensed from the owner, copyrights in the Programs.

1. License

Under this license, you may use the Programs only with the device on which they are installed and transfer possession of the Programs and the device to another party. If you transfer the Programs, you must transfer a copy of this license and any other documentation to the other party. Your license is then terminated. The other party agrees to these terms and conditions by its first use of the Program.

You may not:

- 1) use, copy, modify, merge, or transfer copies of the Program except as provided in this license;
- 2) reverse assemble or reverse compile the Program; or
- 3) sublicense, rent, lease, or assign the Program.

2. Limited Warranty

The Programs are provided "AS IS."

THERE ARE NO OTHER WARRANTIES COVERING THE PROGRAMS (OR CONDITIONS), EXPRESS OR IMPLIED, INCLUDING, BUT NOT LIMITED TO, THE IMPLIED WARRANTIES OF MERCHANTABILITY AND FITNESS FOR A PARTICULAR PURPOSE.

Some jurisdictions do not allow the exclusion of implied warranties, so the above exclusion may not apply to you.

SUPPLEMENT TO AGREEMENT FOR SOFTWARE BUNDLING AND DISTRIBUTION FOR ALDC

3. Limitation of Remedies

IBM's entire liability under this license is the following;

- 1) For any claim (including fundamental breach), in any form, related in any way to this license, IBM's liability will be for actual damages only and will be limited to the greater of ;
 - a) the equivalent of U.S.\$25,000 in your local currency; or
 - b) IBM's then generally available license fee for the Program

This limitation will not apply to claims for bodily injury or damages to real or tangible personal property for which IBM is legally liable. IBM will not be liable for any lost profits, lost savings, or any incidental damages or other economic consequential damages, even if IBM, or its authorized supplier, has been advised of the possibility of such damages. IBM will not be liable for any damages claimed by you based on any third party claim. This limitation of remedies also applies to any developer of Programs supplied to IBM. IBM's and the developer's limitations of remedies are not cumulative. Such developer is an intended beneficiary of this Section. Some jurisdictions do not allow these limitations or exclusions, so they may not apply to you.

4. General

You may terminate your license at any time. IBM may terminate your license if you fail to comply with the terms and conditions of this license. In either event, you must destroy all your copies of the Program. You are responsible for payment of any taxes, including personal property taxes, resulting from this license. Neither party may bring an action, regardless of form, more than two years after the cause of action arose. If you acquired the Program in the United States, this license is governed by the laws of the State of New York. If you acquired the Program in Canada, this license is governed by the laws of the Province of Ontario. Otherwise, this license is governed by the laws of the country in which you acquired the Program.

Typeface Trademark Acknowledgement

All resident fonts in this printer are licensed from Agfa Corporation.

Helvetica, Palatino and Times are registered trademarks of Linotype-Hell AG.

ITC Avant Garde Gothic, ITC Bookman, ITC ZapfChancery and ITC Zapf Dingbats are registered trademarks of International Typeface

Corporation.

Agfa Japan License Agreement

1. "Software" shall mean the digitally encoded, machine readable, scalable outline data as encoded in a special format as well as the UFST Software.
2. You agree to accept a non-exclusive license to use the Software to reproduce and display weights, styles and versions of letters, numerals, characters and symbols ("Typefaces") solely for your own customary business. Agfa Japan retains all rights, title and interest to the Software and Typefaces and no rights are granted to you other than a License to use the Software on the terms expressly set forth in this Agreement.
3. To protect proprietary rights of Agfa Japan, you agree to maintain the Software and other proprietary information concerning the Typefaces in strict confidence and to establish reasonable procedures regulating access to and use of the Software and Typefaces.
4. You agree not to duplicate or copy the Software or Typefaces, except that you may make one backup copy.
5. This License shall continue until the last use of the Software and Typefaces, unless sooner terminated. This License may be terminated by Agfa Japan if you fail to comply with the terms of this License and such failure is not remedied within thirty (30) days after notice from Agfa Japan. When this License expires or is terminated, you shall either return to Agfa Japan or destroy all copies of the Software and Typefaces and documentation as requested.
6. You agree that you will not modify, alter, disassemble, decrypt, reverse engineer or decompile the Software.
7. Agfa Japan warrants that for ninety (90) days after delivery, the Software will perform in accordance with Agfa Japan-published specifications. Agfa Japan does not warrant that the Software is free from all bugs, errors and omissions. THE PARTIES AGREE THAT ALL OTHER WARRANTIES, EXPRESSED OR IMPLIED, INCLUDING WARRANTIES OF FITNESS FOR A PARTICULAR PURPOSE AND MERCHANTABILITY, ARE EXCLUDED.
8. Your exclusive remedy and the sole liability of Agfa Japan in connection with the Software and Typefaces is repair or replacement of defective parts, upon their return to Agfa Japan. IN NO EVENT WILL AGFA JAPAN BE LIABLE FOR LOST PROFITS, LOST DATA, OR ANY OTHER INCIDENTAL OR CONSEQUENTIAL DAMAGES, OR ANY DAMAGES CAUSED BY ABUSE OR MISAPPLICATION OF THE SOFTWARE AND TYPEFACES.
9. New York, U.S.A. law governs this Agreement.
10. You shall not sublicense, sell, lease, or otherwise transfer the Software and/or Typefaces without the prior written consent of Agfa Japan.
11. Use, duplication or disclosure by the Government is subject to restrictions as set forth in the Rights in Technical Data and Computer Software clause at FAR 252-227-7013, subdivision (b)(3)(ii) or subparagraph (c)(1)(ii), as appropriate. Further use, duplication or disclosure is subject to restrictions applicable to restricted rights software as set forth in FAR 52.227-19 (c)(2).
12. YOU ACKNOWLEDGE THAT YOU HAVE READ THIS AGREEMENT, UNDERSTAND IT, AND AGREE TO BE BOUND BY ITS TERMS AND CONDITIONS. NEITHER PARTY SHALL BE BOUND BY ANY STATEMENT OR REPRESENTATION NOT CONTAINED IN THIS AGREEMENT. NO CHANGE IN THIS AGREEMENT IS EFFECTIVE UNLESS WRITTEN AND SIGNED BY PROPERLY AUTHORIZED REPRESENTATIVES OF EACH PARTY.

1. Printer Settings (15 ppm copier)

IMPORTANT!

All setting items and the selection of their actual settings are accomplished in this machine based on a maximum 3-digit entry system. Refer to "1-2 List of settings" on page 1-3 for information regarding the various items as well as their corresponding menu numbers and available settings.

1-1 Procedure for making settings

1

Press the Printer key. The machine will switch to the printer mode and "P00" will appear in the copy quality/magnification display.



2

Use the numeric keys to enter the desired menu number and then press the Enter key. Use the "▲" and "▼" keys to scroll through the menu numbers one number at a time. (Any menu number that does not have a corresponding setting item will be skipped and the next viable menu number that DOES have an available setting will be displayed.)



3

Select the desired setting.

Note

Settings are normally changed by using the "▲" and "▼" keys to select a value (or the number that corresponds to the desired setting) and then pressing the Enter key. When it is necessary to type in a value or number directly (such as with a network address or the time, etc.), use the numeric keys to enter the desired information and then press the Enter key. (When you enter a network address it necessary to press the Enter key after each block of 3 digits.)



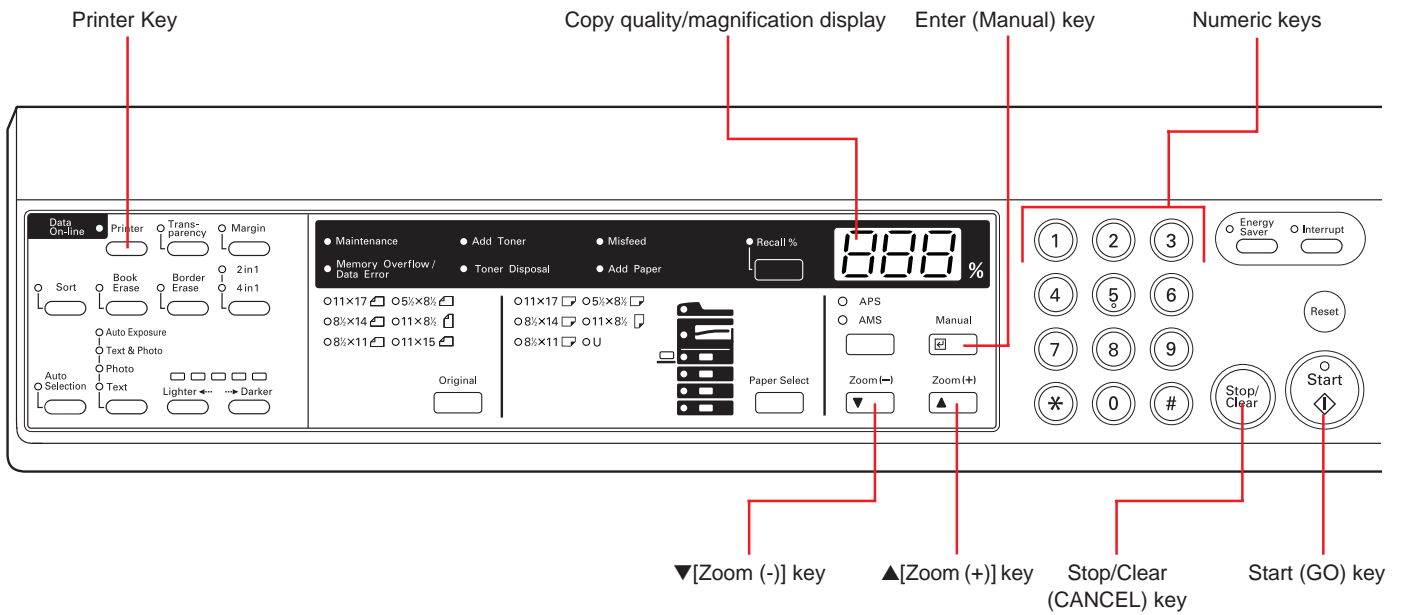
4

Press the Printer key again to switch back to the copier mode.

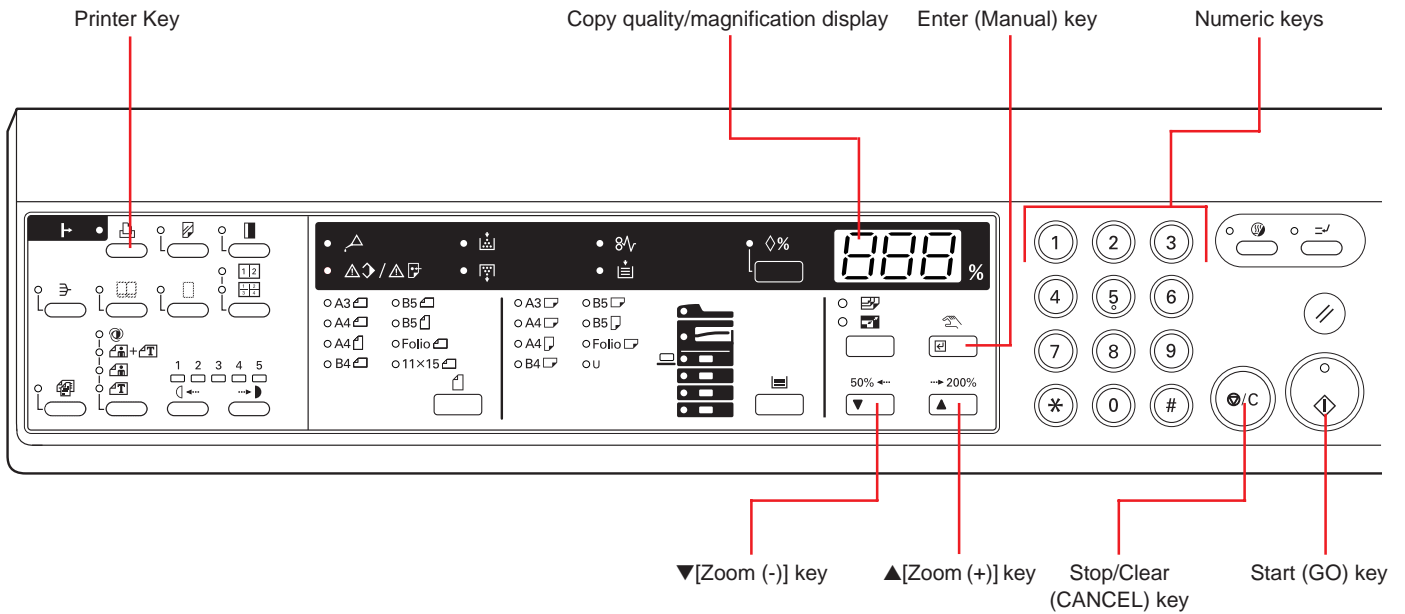
1. Printer Settings (15 ppm copier)

■ Operation keys

<15 ppm copier - Inch version>



<15 ppm copier - Metric version>



1. Printer Settings (15 ppm copier)

1-2 List of settings

Menu number	Item	Available settings	Remarks
P11	Printer Status Page print out Prints out a list of such items as the current printer default settings and memory volume, etc.	---	Print out will begin as soon as the corresponding menu number is displayed and the Enter key pressed.
P20	Parallel TX/RX mode Sets the transmission and reception mode when the printer is connected to your computer with a parallel interface.	(1) Auto (2) Normal (3) High Speed (4) Nibble (high)	
P21	NetWare ON/OFF	(1) On (2) Off	Available only when the Network Card is installed.
P22	NetWare frame type Sets the NetWare frame type.	(1) Auto (2) 802.3 (3) Ethernet II (4) 802.2 (5) 802.3 SNAP	Available only when the Network Card is installed.
P23	TCP/IP ON/OFF	(1) On (2) Off	Available only when the Network Card is installed.
P24	DHCP ON/OFF	(1) On (2) Off	Available only when the Network Card is installed.
P25	IP address	Enter the address.	Available only when the Network Card is installed.
P26	Subnet Mask	Enter the address.	Available only when the Network Card is installed.
P27	Gateway address	Enter the address.	Available only when the Network Card is installed.
P28	EtherTalk ON/OFF	(1) On (2) Off	Available only when the Network Card is installed.
P29	Network Card Status Page print out ON/OFF Sets whether a Status Page regarding conditions in the Network Card will be printed out as well when the standard Status Page for the printer (menu: P11) or that for use by your service representative (menu: P76) are printed out. A more detailed Status Page is printed out together with the "Service Rep Status Page print out" setting (menu: P76).	(1) On (2) Off	Available only when the Network Card is installed.
P30	Emulation protocol (parallel interface) Sets the emulation protocol that will be used.	(1) Line Printer (2) IBM Proprinter (3) DIABLO 630 (4) EPSON LQ-850 (5) PCL 6 (6) KPDL (7) KPDL (AUTO)	

1. Printer Settings (15 ppm copier)

Menu number	Item	Available settings	Remarks
P31	KPDL Error Report print out ON/OFF Sets whether an Error Report will be automatically printed out whenever a KPDL error occurs.	(1) On (2) Off	
P32	Auto emulation switching (parallel interface) Sets the back-up emulation that, depending upon the type of data received, may be switched to for printing out when "KPDL (AUTO)" (setting: 7) is selected under the "Emulation protocol" setting (menu: P30).	(1) Line Printer (2) IBM Proprinter (3) DIABLO 630 (4) EPSON LQ-850 (5) PCL 6	
P35	Emulation protocol (network interface) Sets the emulation protocol that will be used.	(1) Line Printer (2) IBM Proprinter (3) DIABLO 630 (4) EPSON LQ-850 (5) PCL 6 (6) KPDL (7) KPDL (AUTO)	Available only when the Network Card is installed.
P37	Auto emulation switching (network interface) Sets the back-up emulation that, depending upon the type of data received, may be switched to for printing out when "KPDL(AUTO)" (setting: 7) is selected under the "Emulation protocol" setting (menu: P30)	(1) Line Printer (2) IBM Proprinter (3) DIABLO 630 (4) EPSON LQ-850 (5) PCL 6	Available only when the Network Card is installed.
P40	Number of copies	001 - 999	
P42	Page Protect If "AUTO" (setting: 1) is selected here, the machine will monitor the data and, if necessary, will automatically turn Page Protect ON. If a "Print overrun" error (error code: E80) does happen to occur even then, the machine will automatically change the Page Protect setting to "ON" (setting: 2).	(1) Auto (2) On	
P43	Line Feed (LF) handling (parallel interface)	(1) LF only (2) CR and LF (3) Ignore LF	
P44	Line Feed (LF) handling (network interface)	(1) LF only (2) CR and LF (3) Ignore LF	Available only when the Network Card is installed.
P45	Carriage Return (CR) handling (parallel interface)	(1) CR only (2) CR and LF (3) Ignore CR	
P46	Carriage Return (CR) handling (network interface)	(1) CR only (2) CR and LF (3) Ignore CR	Available only when the Network Card is installed.

1. Printer Settings (15 ppm copier)

Menu number	Item	Available settings	Remarks
P47	Wide A4 ON/OFF Increases the printing area on A4 size paper.	(1) On (2) Off	
P48	Printing orientation (parallel interface)	(1) Portrait (2) Landscape	
P49	Printing orientation (network interface)	(1) Portrait (2) Landscape	Available only when the Network Card is installed.
P50	Smoothing ON/OFF Allows a printing resolution of an interpolated 2400 dpi x 600 dpi through the smoothing process.	(1) On (2) Off	
P51	Draft Mode ON/OFF Allows printing in a toner-saving mode. This mode is especially suited for test pages, etc., where high printing quality is not required.	(1) On (2) Off	
P52	Printing resolution	(1) 300 dpi (2) 600 dpi	
P55	RAM disk ON/OFF	(1) On (2) Off	At least 16 MB of additional memory (option) must be installed.
P56	RAM disk size Sets the amount of memory that will be used as a RAM disk. The maximum size that can be selected is the total amount of memory installed minus the amount used by the system (9 MB).	01 - 99 (MBytes)	
P61	A4 & Letter usage ON/OFF Allows both A4 and letter size paper to be utilized as though they are the same size.	(1) On (2) Off	
P62	Bypass mode If "First" (setting: 2) is selected here and there is paper set in the Multi-Bypass, paper feed will be accomplished from the Multi-Bypass.	(1) Cassette (2) First	
P70	Force-print time-out If "000" seconds is selected here, successive pages will not be printed until they are manually force-printed (by pressing the Start key in the printer mode).	000 - 495 (sec.)	

1. Printer Settings (15 ppm copier)

Menu number	Item	Available settings	Remarks
P71	<p>Receive dump mode</p> <p>The data that the printer receives for debugging programs and files is turned into hexadecimal code and printed out. If "OK" (setting: 1) is selected here, this receive dump mode will be activated. The receive dump mode will be canceled under the following circumstances:</p> <ul style="list-style-type: none"> • The Start key is pressed in the printer mode. • A force-print time-out occurs. 	(1) OK	
P72	<p>Printer reset</p> <p>Resets the Printer Board only even without turning the power to the machine OFF.</p>	(1) OK	
P73	<p>Resource protect mode</p> <p>Protects the resource data of fonts and macros downloaded through PCL6 and, even if the emulation protocol is switched, the PCL resource will be saved in the printer's memory. If "Permanent" (setting: 2) is selected here, temporary resources will not be saved. If, however, "Permanent/Temporary" (setting: 3) is selected, temporary resources will also be saved.</p> <p>Permanent/Temporary</p>	(1) Off (2) Permanent (3) Permanent/Temporary	At least 16 MB of additional memory (option) must be installed.
P74	<p>Auto Continue ON/OFF</p> <p>If one of the following error messages appears and "On" has been selected here, the error state will be released and the printing operation will be restarted automatically after a specified amount of time.</p> <p>"Memory overflow (error code : E70)" "Print overrun (error code : E80)"</p>	(1) On (2) Off	
P75	<p>Recovery time for Auto Continue</p> <p>Sets the amount of time before Auto Continue engages when "On" (setting: 1) is selected under the "Auto Continue ON/OFF" setting (menu: P74). If "000" seconds is selected here, Auto Continue will engage immediately after the error.</p>	000 - 495 (sec.)	
P76	<p>Service Rep Status Page print out</p> <p>Prints out a Status Page for use by your service representative.</p>	— — —	Print out will begin as soon as the corresponding menu number is displayed and the Enter key pressed.

2. Printer Settings (20 ppm copier)

2-1 Procedure for making settings

1 Press the Printer key. The machine will switch to the printer mode.



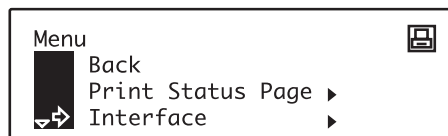
2 Use the "▲" and "▼" cursor keys to select "MENU" and then press the Enter key.



3 Select the desired setting.
(Refer to "2-2 Menu flow chart" on page 2-3 for a list of the various possible settings.)

Note

Settings are categorized into a hierarchy under the "MENU" command. Use the "▲" and "▼" cursor keys to select "MENU" and then press the Enter key to access the menu of available setting items. Once the desired setting is selected, press the Enter key once again.



4 Change the desired setting.
(Refer to "2-3 List of settings" on page 2-7 for information regarding each item and its possible settings.)

Note

Settings are normally changed (turned ON and OFF, etc.) by using the "▲" and "▼" cursor keys to move the selection cursor (⇨) and select the desired setting, and then pressing the Enter key.

When it is necessary to type in a value or number directly (such as with a network address or the time, etc.), use the numeric keys to enter the desired information and the cursor left and right keys to change the location of the cursor. Once entry is complete, press the Enter key.

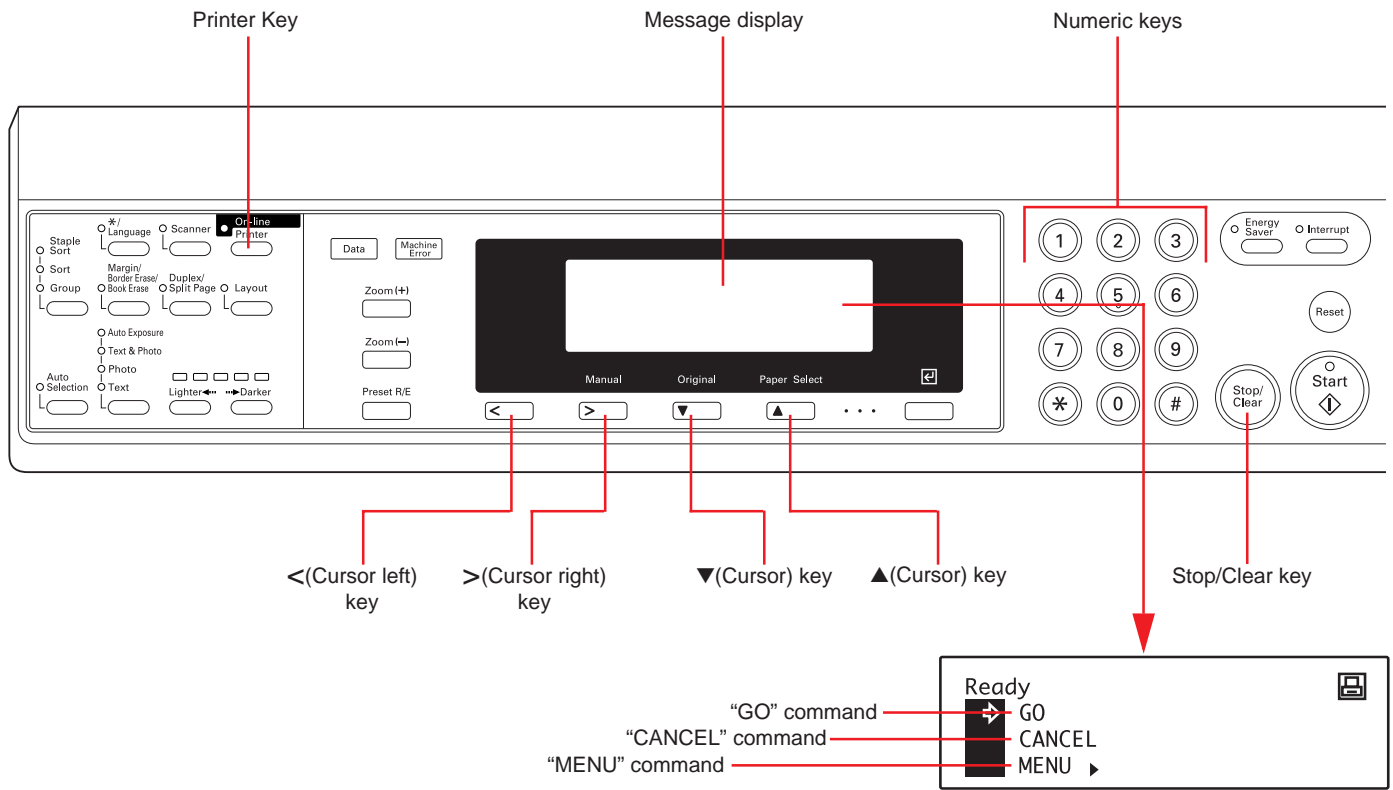


5 Press the Printer key again to switch back to the copier mode.

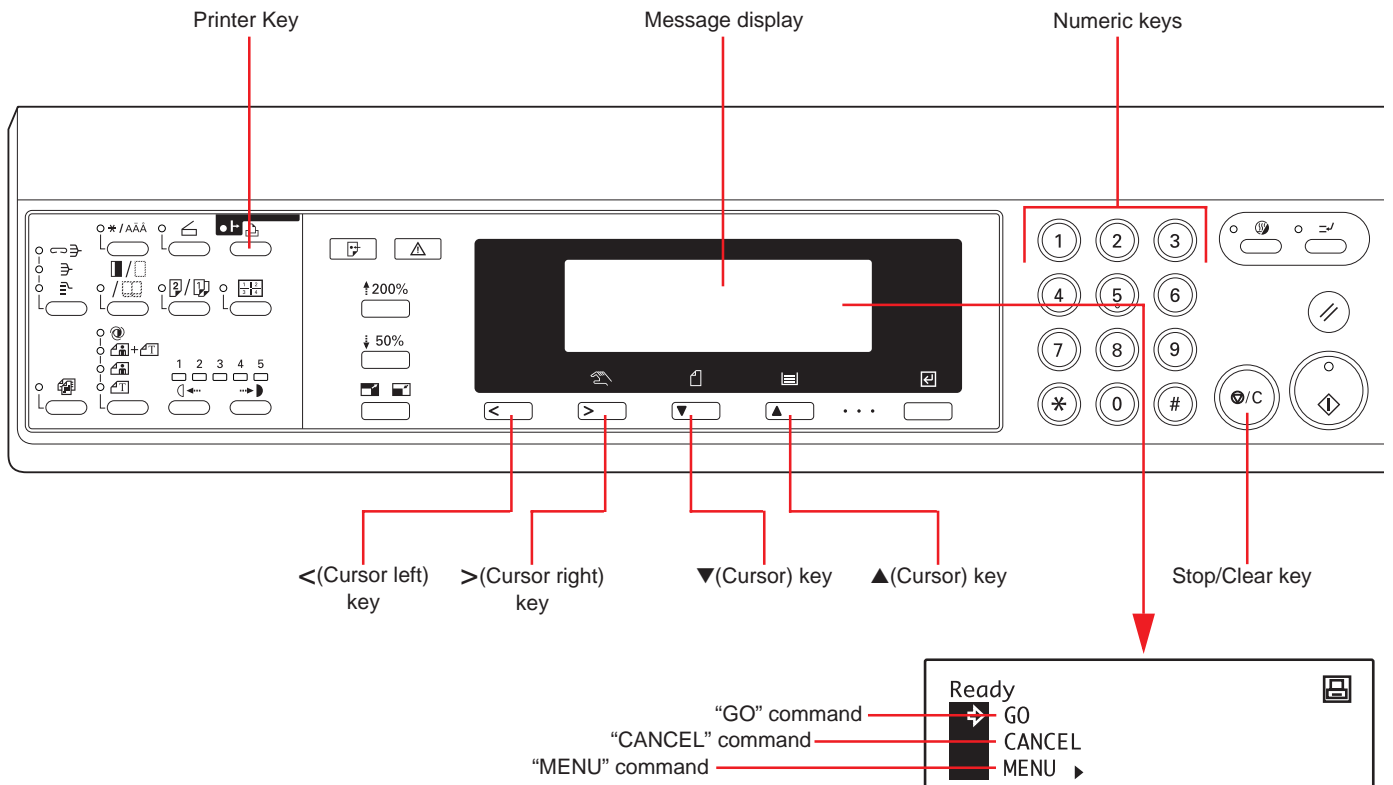
2. Printer Settings (20 ppm copier)

■ Operation keys

<20 ppm copier - Inch version>

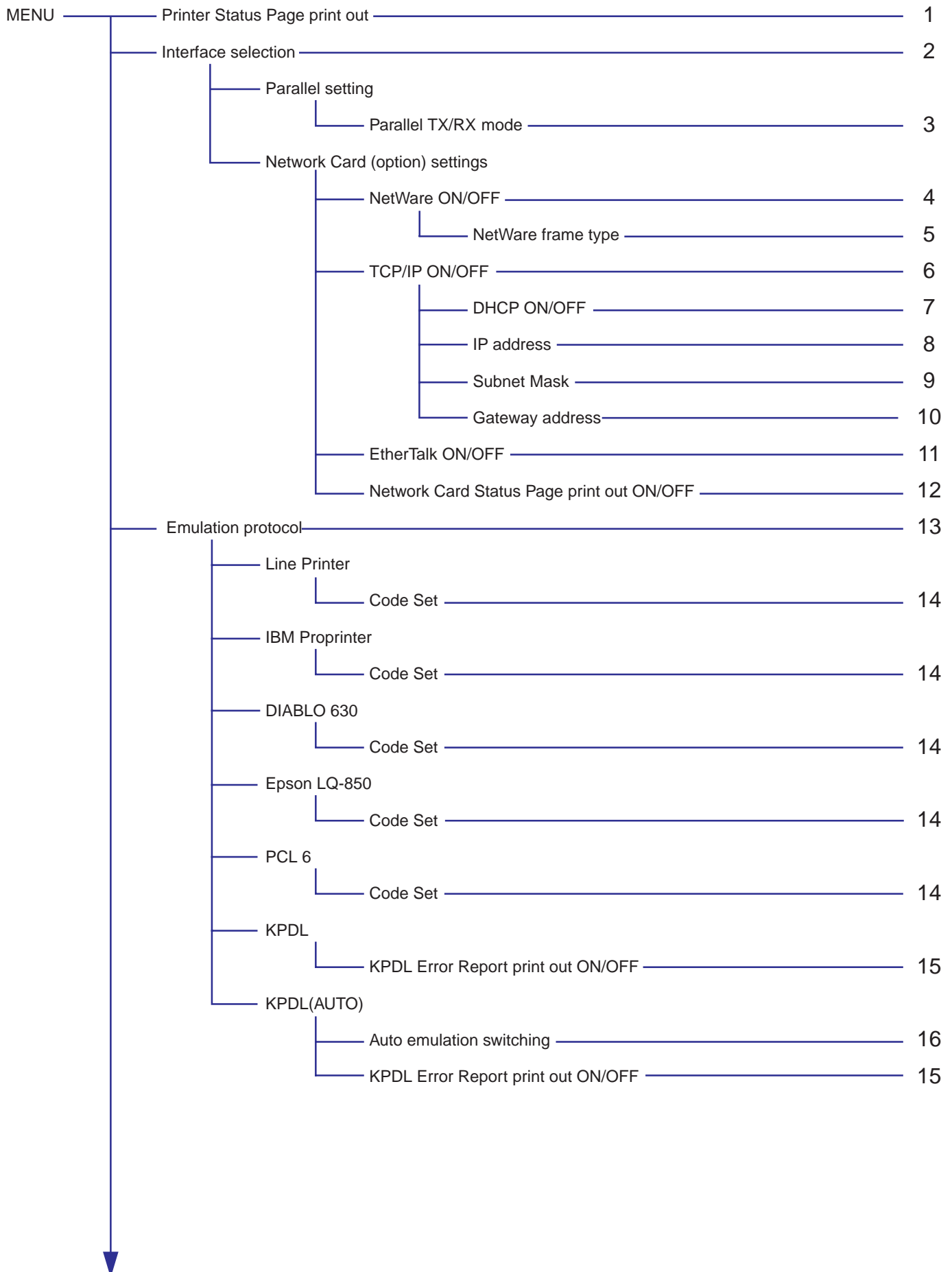


<20 ppm copier - Metric version>



2. Printer Settings (20 ppm copier)

2-2 Menu flow chart



2. Printer Settings (20 ppm copier)

Font settings	
Internal	
Font selection	17
Courier font	18
Letter Gothic font	19
Font List print out	20
Option	
Font selection	17
Font List print out	20
Printing environment settings	
Number of copies	21
Printing orientation	22
Page Protect	23
Line Feed (LF) handling	24
Carriage Return (CR) handling	25
Wide A4 ON/OFF	26
Printing resolution settings	
Smoothing ON/OFF	27
Draft Mode ON/OFF	28
Printing resolution	29

2. Printer Settings (20 ppm copier)

RAM disk ON/OFF	30
RAM disk size	31
Reading data	32
Reading program data	33
Writing data	34
Deleting data	35
Deleting font data	36
Deleting program data	37
Deleting macro data	38
Partition List print out	39
Memory Card settings	
Reading fonts	40
Reading macro data	41
Reading data	42
Reading program data	43
Writing data	44
Deleting data	45
Deleting font data	46
Deleting program data	47
Deleting macro data	48
Formatting the Memory Card	49
Partition List print out	50

2. Printer Settings (20 ppm copier)

Paper handling settings	
Duplex mode	51
A4 & Letter usage ON/OFF	52
Bypass mode	53
Other settings	
Form feed time-out	54
Receive dump mode	55
Printer reset	56
Resource protect mode	57
Auto Continue ON/OFF	58
Recovery time for Auto Continue	59
Service	
Service Rep Status Page print out	60

2. Printer Settings (20 ppm copier)

2-3 List of settings

Item No.	Item	Display message	Available settings	Remarks
1	Printer Status Page print out Prints out a list of such items as printer default settings and memory volume, etc.	Print Status Page	No, Print	
2	Interface selection When the optional Network Card is installed, the available interfaces are displayed. The arrow (>) will indicate the currently selected interface. The printer will automatically switch to the appropriate interface for printing.	Interface	Parallel, Option	"Option" is displayed only when the Network Card is installed.
3	Parallel TX/RX mode Sets the transmission and reception mode when the printer is connected to your computer with a parallel interface.	Parallel	Auto, Normal, High Speed, Nibble (high)	
4	NetWare ON/OFF	NetWare	On, Off	Displayed only when the Network Card is installed.
5	NetWare frame type Sets the NetWare frame type.	NetWare Frame	Auto, 802.3, Ethernet II, 802.2, 802.3 SNAP	Displayed only when the NetWare setting is turned "On".
6	TCP/IP ON/OFF	TCP/IP	On, Off	Displayed only when the Network Card is installed.
7	DHCP ON/OFF	DHCP	On, Off	Displayed only when the Network Card is installed.
8	IP address	IP Address	Enter the address.	Displayed only when the Network Card is installed.
9	Subnet Mask	Subnet Mask	Enter the address.	Displayed only when the Network Card is installed.
10	Gateway address	Gateway	Enter the address.	Displayed only when the Network Card is installed.
11	EtherTalk ON/OFF	EtherTalk	On, Off	Displayed only when the Network Card is installed.
12	Network Card Status Page print out ON/OFF Sets whether a Status Page regarding conditions in the Network Card will be printed out as well when the standard Status Page for the printer (item No.: 1) or that for use by your service representative (item No.: 60) are printed out. A more detailed Status Page is printed out together with the "Service Rep Status Page print out" setting (item No.: 1).	Opt. StatusPage	On, Off	Displayed only when the Network Card is installed.
13	Emulation protocol Sets the emulation protocol that will be used.	Emulation	Line Printer, IBM Proprinter, DIABLO 630, EPSON LQ-850, PCL 6, KPDL, KPDL (AUTO)	Allows you to set a different emulation for the parallel interface and the Network Card (option). Select the desired interface under the "Interface selection" setting (item No.: 2).

2. Printer Settings (20 ppm copier)

Item No.	Item	Display message	Available settings	Remarks
14	Code Set Selects the code set that will be used under each emulation protocol. (There is no selection for the code set under "KPD L" or "KPD L(AUTO)".)	Code Set	The code sets available for selection will differ depending upon the emulation protocol.	
15	KPD L Error Report print out ON/OFF Sets whether an Error Report will be automatically printed out whenever a KPD L error occurs.	Print KPD L Errs	On, Off	
16	Auto emulation switching Sets the back-up emulation that, depending upon the type of data received, may be switched to for printing out when "KPD L(AUTO)" is selected under the "Emulation protocol" setting (item No.: 13).	Alt. emulation	Line Printer, IBM Proprinter, DIABLO 630, EPSON LQ-850, PCL 6,	Allows you to set a different emulation for the parallel interface and the Network Card (option). Select the desired interface under the "Interface selection" setting (item No.: 2).
17	Font selection Selects the font that will be used for printing. This setting is made by entering the ID of the desired font. To select a font that is already installed in the printer, enter "I###" (with the corresponding font ID entered in place of the ###). To verify font IDs, print out a Font List by carrying out the "Font List print out" setting (item No.: 20). It is possible to select a font other than those already installed, such as those in the optional Memory Card.	Font ID	001 - 080	To select an installed font, select the "Internal" menu. To select a font other than those already installed, select the "Option" menu.
18	Courier font Allows you to select between "Regular" and "Dark".	Courier	Regular Dark	Displayed only when the "Internal" menu is selected.
19	Letter Gothic font Allows you to select between "Regular" and "Dark".	Letter Gothic	Regular Dark	Displayed only when the "Internal" menu is selected.
20	Font List print out Prints out a list of KPD L fonts when the emulation protocol has been set to "KPD L" or "KPD L(AUTO)".	List of Fonts	No, Print	
21	Number of copies	Copies	001 - 999	
22	Printing orientation	Orientation	Portrait, Landscape	Allows you to set a different printing orientation for the parallel interface and the Network Card (option). Select the desired interface under the "Interface selection" setting (item No.: 2).

2. Printer Settings (20 ppm copier)

Item No.	Item	Display message	Available settings	Remarks
23	Page Protect If "AUTO" is selected here, the machine will monitor the data and, if necessary, will automatically turn Page Protect ON. If a "Print overrun" error does happen to occur even then, the machine will automatically change the Page Protect setting to "ON".	Page Protect	Auto, On	
24	Line Feed (LF) handling	LF Action	LF only, CR and LF, Ignore LF	Allows you to set different line feed handling for the parallel interface and the Network Card (option). Select the desired interface under the "Interface selection" setting (item No.: 2).
25	Carriage Return (CR) handling	CR Action	CR only, CR and LF, Ignore CR	Allows you to set different carriage return handling for the parallel interface and the Network Card (option). Select the desired interface under the "Interface selection" setting (item No.: 2).
26	Wide A4 ON/OFF Increases the printing area on A4 size paper.	Wide A4	On, Off	
27	Smoothing ON/OFF Allows a printing resolution of an interpolated 2400 dpi x 600 dpi through the smoothing process.	KIR Mode	On, Off	
28	Draft Mode ON/OFF Allows printing in a toner-saving mode. This mode is especially suited for test pages, etc., where high printing quality is not required.	Draft	On, Off	
29	Printing resolution	Resolution	300 dpi, 600 dpi	
30	RAM disk ON/OFF	RAM DISK Mode	On, Off	At least 16 MB of additional memory (option) must be installed.
31	RAM disk size Sets the amount of memory that will be used as a RAM disk. The maximum size that can be selected is the total amount of memory installed minus the amount used by the system (9 MB).	RAM DISK Size	01 - 99 (MBytes)	Displayed only when "On" is selected under the "RAM disk ON/OFF" setting (item No.: 30).
32	Reading data Reads the selected data on the RAM disk.	Read Data	Select the name of the partition which holds the data from among those displayed.	Displayed only when there is appropriate data in the RAM disk.
33	Reading program data Reads the selected program data on the RAM disk.	Read Program	Select the name of the partition which holds the program from among those displayed.	Displayed only when there is appropriate program data in the RAM disk.
34	Writing data If "OK" is selected here, the machine will enter a "waiting for data" state until data is sent from the host computer. To exit this state, select the "GO" command in the printer mode and then press the Enter key.	Write Data	OK	Displayed only when "On" is selected under the "RAM disk ON/OFF" setting (item No.: 30).

2. Printer Settings (20 ppm copier)

Item No.	Item	Display message	Available settings	Remarks
35	Deleting data Deletes the selected data from the RAM disk.	Delete Data	Select the name of the partition which holds the data from among those displayed.	Displayed only when there is appropriate data in the RAM disk.
36	Deleting font data Deletes the selected font data from the RAM disk.	Delete Font	Select the name of the font from among those displayed.	Displayed only when there is appropriate font data in the RAM disk.
37	Deleting program data Deletes the selected program data from the RAM disk.	Delete Program	Select the name of the partition which holds the program from among those displayed.	Displayed only when there is appropriate program data in the RAM disk.
38	Deleting macro data Deletes the selected macro data from the RAM disk.	Delete Macro	Select the name of the partition which holds the macro from among those displayed.	Displayed only when there is appropriate macro data in the RAM disk.
39	Partition List print out	List of Partitions	No, Print	Displayed only when "On" is selected under the "RAM disk ON/OFF" setting (item No.: 30).
40	Reading fonts If "OK" is selected here, the font data in the Memory Card will be read all at once.	Read Fonts	OK	Displayed only when there is appropriate font data in the Memory Card.
41	Reading macro data If "OK" is selected here, the macro data in the Memory Card will be read all at once.	Read Macro	OK	Displayed only when there is appropriate macro data in the Memory Card.
42	Reading data Reads the selected data in the Memory Card.	Read Data	Select the name of the partition which holds the data from among those displayed.	Displayed only when there is appropriate data in the Memory Card.
43	Reading program data Reads the selected program data in the Memory Card.	Read Program	Select the name of the partition which holds the program from among those displayed.	Displayed only when there is appropriate program data in the Memory Card.
44	Writing data If "OK" is selected here, the machine will enter a "waiting for data" state until data is sent from the host computer. To exit this state, select the "GO" command in the printer mode and then press the Enter key.	Write Data	OK	Displayed only when the Memory Card is installed.
45	Deleting data Deletes the selected data from the Memory Card.	Delete Data	Select the name of the partition which holds the data from among those displayed.	Displayed only when there is appropriate data in the Memory Card.

2. Printer Settings (20 ppm copier)

Item No.	Item	Display message	Available settings	Remarks
46	Deleting font data Deletes the selected font data from the Memory Card.	Delete Font	Select the name of the font from among those displayed.	Displayed only when there is appropriate font data in the Memory Card.
47	Deleting program data Deletes the selected program data from the Memory Card.	Delete Program	Select the name of the partition which holds the program from among those displayed.	Displayed only when there is appropriate program data in the Memory Card.
48	Deleting macro data Deletes the selected macro data from the Memory Card.	Delete Macro	Select the name of the partition which holds the macro from among those displayed.	Displayed only when there is appropriate macro data in the Memory Card.
49	Formatting the Memory Card If "OK" is selected here, formatting of the Memory Card will begin.	Format	OK	Displayed only when the Memory Card is installed.
50	Partition List print out	List of Partitions	No, Print	Displayed only when the Memory Card is installed.
51	Duplex mode	Duplex Mode	None, Short edge bind, Long edge bind	Displayed only when the Duplex Unit (option) is installed.
52	A4 & Letter usage ON/OFF Allows both A4 and letter size paper to be utilized as though they are the same size.	Override A4/LT	On, Off	
53	Bypass mode If "First" is selected here and there is paper set in the Multi-Bypass, paper feed will be accomplished from the Multi-Bypass.	Bypass Mode	Cassette, First	
54	Form feed time-out If "000" seconds is selected here, successive pages will not be printed until they are manually force-printed (by selecting the "GO" command in the printer mode and then pressing the Enter key).	Form Feed Time out	000 - 495 (sec.)	

2. Printer Settings (20 ppm copier)

Item No.	Item	Display message	Available settings	Remarks
55	<p>Receive dump mode</p> <p>The data that the printer receives for debugging programs and files is turned into hexadecimal code and printed out. If "OK" is selected here, this receive dump mode will be activated. The receive dump mode will be canceled under the following circumstances:</p> <ul style="list-style-type: none"> • Form feed is initiated (by selecting the "GO" command in the printer mode and then pressing the Enter key). • A force-print time-out occurs. 	Print HEX-DUMP	OK	
56	<p>Printer reset</p> <p>Resets the Printer Board only even without turning the power to the machine OFF.</p>	Printer Reset	OK	
57	<p>Resource protect mode</p> <p>Protects the resource data of fonts and macros downloaded through PCL6 and, even if the emulation protocol is switched, the PCL resource will be saved in the printer's memory. If "Permanent" is selected here, temporary resources will not be saved. If, however, "Per/Temp" is selected, temporary resources will also be saved.</p>	Resource pro.	Off, Permanent, Per/Temp	At least 16 MB of additional memory (option) must be installed.
58	<p>Auto Continue ON/OFF</p> <p>If one of the following error messages appears and "On" has been selected here, the error state will be released and the printing operation will be restarted automatically after a specified amount of time.</p> <p>"Memory overflow" "Print overrun"</p>	Auto Continue	On, Off	
59	<p>Recovery time for Auto Continue</p> <p>Sets the amount of time before Auto Continue engages when "On" is selected under the "Auto Continue ON/OFF" setting (item No.: 58). If "000" seconds is selected here, Auto Continue will engage immediately after the error.</p>	Change #	000 - 495 (sec.)	Displayed only when "On" is selected under the "Auto Continue ON/OFF" setting (item No.: 58).
60	<p>Service Rep Status Page print out</p> <p>Prints out a Status Page for use by your service representative.</p>	Print Status page	No, Print	

3. Memory Card / RAM Disk

3-1 Memory Card

This machine comes equipped with a slot for inserting a Memory Card.

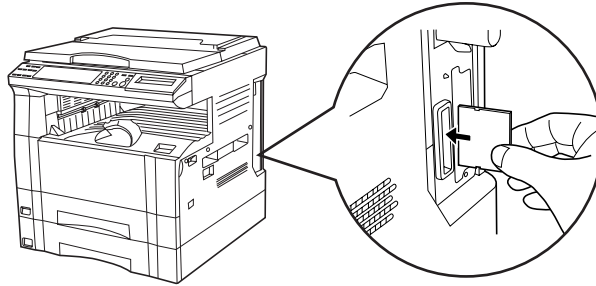
Use a Memory Card that contains fonts in order to print with fonts other than those already installed in the machine, or use the card to save and then read print data.

Inserting the Memory Card

Insert the Memory Card into the slot carefully with the front of the card facing the rear of the machine.

IMPORTANT!

BE SURE to turn the main switch OFF (O) BEFORE inserting or removing the Memory Card.



- * The Memory Card is managed through printer control commands received from your computer. Refer to "3-3 Printer control commands" on page 3-2.
- * In 20 ppm copiers, the Memory Card is managed from the operation panel on the copier itself. Refer to "2. Printer Settings (20 ppm copier)" on page 2-1 for information on the appropriate procedure.

3-2 RAM Disk

In this machine, it is possible to create a RAM Disk, or a portion of memory that is used as a virtual disk. By creating a RAM Disk of a desired size from among the total memory in the printer, it is possible to perform electronic sorting (which shortens the overall time required for printing) as well as to save data to and retrieve data from that disk very quickly. Additional memory (option) must be installed before a RAM Disk can be created.

IMPORTANT!

The RAM Disk is created from that portion of the printer's memory that is normally available to the user. Thus, if the size of the RAM disk created is too large, printing speed may actually be decreased or the machine may run out of available memory.
WARNING: Resetting the printer or turning the main switch OFF (O) will erase all data written to the RAM Disk.

The factory default setting for the RAM Disk is "OFF". In order to create a RAM Disk it is necessary to change the setting on the operation panel of the copier itself. Refer to "2. Printer Settings (20 ppm copier)" on page 2-1, or "1. Printer Settings (15 ppm copier)" on page 1-1, as appropriate to your machine, for information on the appropriate procedure.

- * The RAM Disk can be used for saving and reading print data.
- * Saving and reading data on the RAM Disk is managed through printer control commands received from your computer. Refer to "3-3 Printer control commands" on page 3-2.
- * In 20 ppm copiers, the RAM Disk is managed from the operation panel on the copier itself. Refer to "2. Printer Settings (20 ppm copier)" on page 2-1 for information on the appropriate procedure.

3.Memory Card / RAM Disk

3-3 Printer control commands

It is possible to issue simple commands to the Memory Card and RAM Disk from the MS-DOS Prompt in Windows.

3-3-1 Using printer control commands

A printer control command line includes "!R!" (Command operation start), as well the actual commands and parameters that are to be implemented and that are entered after that.

The basic configuration of a printer control command line is as follows:

[Example] To delete the print data entitled "SAMPLE.txt" from the Memory Card

```
ECHO !R! RWER D,A,2,"SAMPLE.txt"; EXIT;>LPT1  
  A   B   C           D           E       F
```

A: DOS command

B: Command operation start

C: Command ("RWER D" is the command to delete data)

D: Parameters ("A" refers to the Memory Card, "2" refers to the type of data [in this case print data] and "SAMPLE.txt" is the name of the corresponding partition)

E: Command operation end

F: Printer connection port (Network: "PRN", Local: "LPT1", etc.)

CAUTIONS

- When issuing DOS commands in the Japanese input mode, ALWAYS use JIS ASCII (JIS C6220) characters. Kanji Code and Kanji Half-Space Code input will not work.
- Enter all commands in uppercase (capital) letters.
- Be sure to enter a semi-colon (;) at the end of each standard command [shown as "C" in the example above] (or after the corresponding parameter, if included), and separate each individual parameter with a comma (,).
- Be sure to enter a space before and after the "!R!" command, as well as before "EXIT;".

3. Memory Card / RAM Disk

3-3-2 Formatting the Memory Card

Perform the following procedure when you want to initialize the Memory Card from your computer.

- * In 20 ppm copiers, the Memory Card is initialized from the operation panel on the copier itself. Refer to "2. Printer Settings (20 ppm copier)" on page 2-1 for information on the appropriate procedure.

IMPORTANT!

WARNING;; Initializing the Memory Card will erase all data in the card. Make sure that you want to initialize that Memory Card before starting the procedure.

Procedure

- 1 Insert the Memory Card that you want to initialize into the Memory Card slot.
- 2 Open an MS-DOS Prompt in Windows.
- 3 Type in the command to format the Memory Card and then press the ENTER key.

```
C:\WINDOWS>ECHO !R! RWER F,A; EXIT;>LPT1
```
- 4 Once the Memory Card is formatted, the "FORMAT INFORMATION" report will be printed out.

3-3-3 Writing print data

Perform the following procedure when you want to write print data to a Memory Card or RAM Disk from your computer.

- * In 20 ppm copiers, print data commands are entered from the operation panel on the copier itself. Refer to "2. Printer Settings (20 ppm copier)" on page 2-1 for information on the appropriate procedure.
- * Verify beforehand that the Memory Card is in a write-enabled state and that the RAM Disk is turned ON.

Procedure

- 1 Open an MS-DOS Prompt in Windows.
- 2 Type in the command to write data and then press the ENTER key.
[Example] To write the print data entitled "SAMPLE.txt" to a Memory Card
* To write the data to a RAM Disk, simply change the "A" parameter to "0".

```
C:\WINDOWS>ECHO !R! RWER W,A,2,"SAMPLE.txt";>LPT1_
```
- 3 Send the print data from your computer.

```
C:\WINDOWS>COPY /b SAMPLE.txt LPT1
```
- 4 Once the print data is sent, the next command can be sent.

```
C:\WINDOWS>ECHO !R! WRED; EXIT;>LPT1_
```
- 5 Print out the Partition List to verify whether or not the data was written properly.
 - * Refer to "3-3-7 Printing out the Partition List" for information on printing that list.
 - * In 20 ppm copiers, Partition List print out is accomplished from the operation panel on the copier itself. Refer to "2. Printer Settings (20 ppm copier)" on page 2-1 for information on the appropriate procedure.

3.Memory Card / RAM Disk

3-3-4 Writing font data

Perform the following procedure when you want to write font data to a Memory Card or RAM Disk from your computer. At the same time as the font data is written to disk, it will be sent to the printer as well.

- * Verify beforehand that the Memory Card is in a write-enabled state and that the RAM Disk is turned ON.
- * Only TrueType fonts can be written to the Memory Card or RAM Disk.

Procedure

1 Open an MS-DOS Prompt in Windows.

2 Type in the command to write data and then press the ENTER key.

[Example] To write the font data entitled "FONT1" to a Memory Card

```
C:\WINDOWS>ECHO !R! RWER S,A,0,"FONT1","FONT",45040;>LPT1
```

①② ③ ④ ⑤

NOTES

The parameters contained within the command line are as follows:

- 1: "A" refers to the Memory Card and "0" refers to the RAM Disk
- 2: "0" refers to a TrueType font, "1" refers to a Japanese TrueType font, "2" refers to a Japanese TrueType Collection font
- 3: File name
- 4: Font name
- 5: Font data length (binary data bytes)

3 Send the font data from your computer.

```
C:\WINDOWS>COPY /b FONT1 LPT1_
```

4 Once the font data is sent, the next command can be sent.

```
C:\WINDOWS>ECHO !R! WRED; EXIT;>LPT1_
```

5 Print out the Partition List to verify whether or not the data was written properly.

- * Refer to "3-3-7 Printing out the Partition List" for information on printing that list.
- * In 20 ppm copiers, Partition List print out is accomplished from the operation panel on the copier itself. Refer to "2. Printer Settings (20 ppm copier)" on page 2-1 for information on the appropriate procedure.

3. Memory Card / RAM Disk

3-3-5 Reading print data

Perform the following procedure when you want to read print data that has been saved on a Memory Card or RAM Disk.

- * In 20 ppm copiers, reading print data is accomplished from the operation panel on the copier itself. Refer to “2. Printer Settings (20 ppm copier)” on page 2-1 for information on the appropriate procedure.
- * Verify beforehand that the Memory Card is in a write-enabled state and that the RAM Disk is turned ON.
- * To verify saved data and the corresponding partition name, it is helpful to print out the Partition List. Refer to “3-3-7 Printing out the Partition List” for information on printing that list.
- * In 20 ppm copiers, Partition List print out is accomplished from the operation panel on the copier itself. Refer to “2. Printer Settings (20 ppm copier)” on page 2-1 for information on the appropriate procedure.

Procedure

1 Open an MS-DOS Prompt in Windows.

2 Type in the command to read data and then press the ENTER key.

[Example] To read the print data entitled “SAMPLE.txt” from a Memory Card

- * To read the data from a RAM Disk, simply change the “A” parameter to “0”.

```
C:\WINDOWS>ECHO !R! RWER R,A,2,“SAMPLE.txt”; EXIT;>LPT1
```

3 Print out of the corresponding data will begin.

3-3-6 Deleting print data or font data

Perform the following procedure when you want to delete print data or font data that has been saved on a Memory Card or RAM Disk.

- * In 20 ppm copiers, deleting data is accomplished from the operation panel on the copier itself. Refer to “2. Printer Settings (20 ppm copier)” on page 2-1 for information on the appropriate procedure.
- * Verify beforehand that the Memory Card or RAM Disk contains the data that you want to delete.
- * To verify saved data and the corresponding partition name, it is helpful to print out the Partition List. Refer to “3-3-7 Printing out the Partition List” for information on printing that list.
- * In 20 ppm copiers, Partition List print out is accomplished from the operation panel on the copier itself. Refer to “2. Printer Settings (20 ppm copier)” on page 2-1 for information on the appropriate procedure.

Procedure

1 Open an MS-DOS Prompt in Windows.

2 Type in the command to delete data and then press the ENTER key.

[Example] To delete the print data entitled “SAMPLE.txt” from a Memory Card

- * To delete the data from a RAM Disk, simply change the “A” parameter to “0”.
- * To delete font data, simply change the “2” parameter to “1”.

```
C:\WINDOWS>ECHO !R! RWER D,A,2,“SAMPLE.txt”; EXIT;>LPT1
```

3 Deletion of the corresponding data will begin.

4 Print out the Partition List to verify whether or not the data was deleted properly.

3.Memory Card / RAM Disk

3-3-7 Printing out the Partition List

Perform the following procedure when you want to print out the Partition List in order to verify the print data and font data that has been saved on a Memory Card or RAM Disk.

* In 20 ppm copiers, Partition List print out is accomplished from the operation panel on the copier itself. Refer to "2. Printer Settings (20 ppm copier)" on page 2-1 for information on the appropriate procedure.

Procedure

1 Open an MS-DOS Prompt in Windows.

2 Type in the command to print out the Partition List and then press the ENTER key.

[Example] To print out the Partition List for a Memory Card

* To print out the Partition List for a RAM Disk, simply change the "A" parameter to "0". If you do not include this parameter, both Partition Lists will be printed out.

```
C:\WINDOWS>ECHO !R! RWER L,A; EXIT;>LPT1_
```

3 Print out of the Partition List will begin.

3-3-8 Auto Partition List print out ON/OFF

It is possible to have a Partition List printed out automatically any time data is written to a Memory Card or RAM Disk. Perform the following procedure when you want to change the setting for automatic print out.

Procedure

1 Open an MS-DOS Prompt in Windows.

2 Type in the command to have the Partition List printed out automatically and then press the ENTER key.

[Example] To turn Auto Partition List print out ON

* To turn Auto Partition List print out OFF, simply change the "E" parameter to "D".

```
C:\WINDOWS>ECHO !R! RWER I,E; EXIT;>LPT1_
```

1. Procedure for Installing and Printing with a Printer Driver

1-1 Included printer drivers

The following printer drivers are included with this product.

* Each type of printer driver has a version appropriate to a specific model of copy machine. Be sure to choose the driver that is appropriate for your copier.

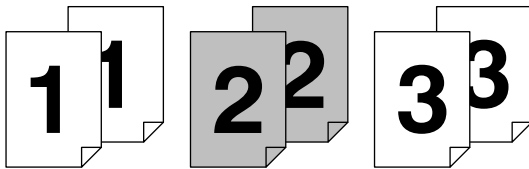
Driver type	Description	Compatible OS
Universal driver	This driver has superior compatibility with application software, thereby enabling WYSIWYG printing.	Windows 95/98 Windows NT4.0 Windows 2000
XL driver	By attaching optional equipment it is possible to easily extend printer functionality. This driver will enable you to use such compound printer functions to their fullest.	Windows NT4.0 Windows 2000
KPDL2 driver	This driver is compatible with Adobe PostScript 2.	Windows 95/98 Windows NT4.0 Windows 2000
Macintosh PPD file	A PPD (PostScript Printer Description) file is included for use with this product. Use "LaserWriter 8" as the printer driver for your Mac OS.	Macintosh System 7.61 or later

■ Collator driver

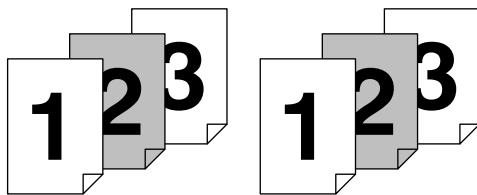
Two drivers, the standard printer driver and a Collator driver, can both be used as Universal drivers for Windows 95, Windows 98 and Windows NT4.0.

Except for the method for printing out multiple sets of copies, the Collator Driver is used in the same way as the standard driver.

[Standard printer driver]



[Collator driver]



Note

If you want to staple your printed sets when the optional Finisher is installed, be sure to use a Collator driver.

■ Refer to "6-1 Printer Driver for Macintosh" on page 6-1 for information on installation on a Macintosh computer.

1. Installing the Printer Drivers

1-2 System Conditions

●Windows 95

		IBM PC / AT or compatible
System requirements	CPU	i486SX 25 MHz or more
	RAM	8 MB or more
	HDD	10 MB or more
Recomended requirements	CPU	Pentium 90 MHz or more
	RAM	16 MB or more
	HDD	10 MB or more
CD-ROM drive		1 drive
Parallel interface port		IEEE 1284

●Windows 98

		IBM PC / AT or compatible
System requirements	CPU	i486DX 66 MHz or more
	RAM	16 MB or more
	HDD	10 MB or more
Recomended requirements	CPU	Pentium 90 MHz or more
	RAM	32 MB or more
	HDD	10 MB or more
CD-ROM drive		1 drive
Parallel interface port		IEEE 1284

●Windows NT 4.0

		IBM PC / AT or compatible
System requirements	CPU	i486SX 25 MHz or more
	RAM	16 MB or more
	HDD	10 MB or more
Recomended requirements	CPU	Pentium 90 MHz or more
	RAM	32 MB or more
	HDD	10 MB or more
CD-ROM drive		1 drive
Parallel interface port		IEEE 1284

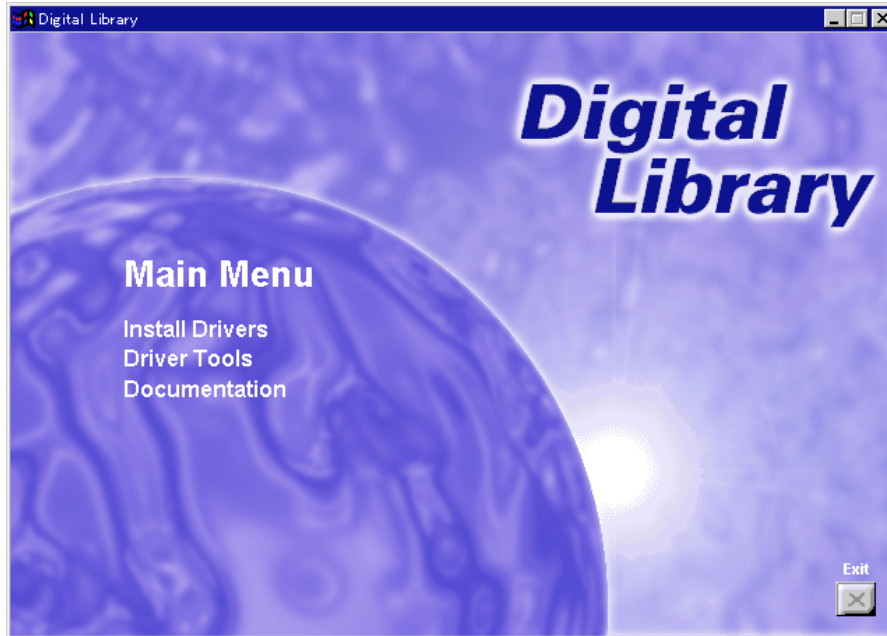
●Windows 2000

		IBM PC / AT or compatible
System requirements	CPU	Pentium 133 MHz or more
	RAM	64 MB or more
	HDD	10 MB or more
Recomended requirements	CPU	Pentium 133 MHz or more
	RAM	64 MB or more
	HDD	10 MB or more
CD-ROM drive		1 drive
Parallel interface port		IEEE 1284

1. Installing the Printer Drivers

1-3 Screen that Appears when the CD-ROM is Inserted

This section explains the screen that appears when the CD-ROM supplied with the Printing System (K) is inserted into the CD-ROM drive.



■ Install Drivers

Click to start installation of the printer driver. Follow the instructions displayed on the screen to install the printer driver.

■ Driver Tools

Click to display a menu including uninstallation of the printer driver.

[Remove Drivers] Starts the uninstaller of the printer driver.

[Make Driver Disk] Copies the installer program to a floppy disk. Use of this floppy disk allows you to install the printer driver without the need of the installer CD-ROM.

* Driver for Macintosh cannot be made.

■ Documentation

Click to display the manual (PDF) supplied with the printer driver. To open this PDF manual, Adobe Acrobat Reader (developed to view PDF files) is required, so make sure that Adobe Acrobat Reader is installed before opening the manual.

[Install Acrobat Reader] Installs Adobe Acrobat Reader.

[User's manual] Displays the manuals (PDF) of the printer and printer driver. They explain the installation procedure of the printer driver and operation procedure of the printer.

[Release Notes], [Read me] This file contains information which is not explained in the manuals. Please read this file before using the printer driver.

1. Installing the Printer Drivers

1-4 Installing the Printer Driver (Windows)

Install the printer driver as follows:

- * The printer can be connected to the computer by one of the following two methods: local or network. If you want to connect them through network, refer to the operation manual of the operating system (OS).
- * The screens shown in the following explanation are those displayed when installing the printer driver for Windows 95/98.

1

Start Windows.

- * If any applications are currently running, exit them.

2

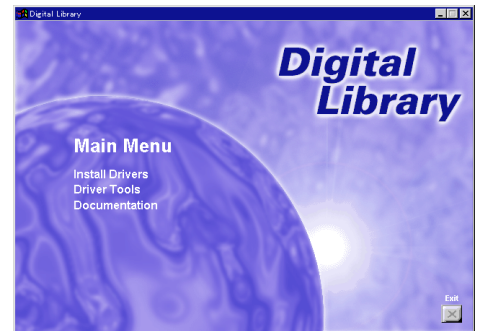
Insert the CD-ROM supplied with the printer into the CD-ROM drive.

A start window will appear.

3

Click Install Driver in the lower left corner of the window.

- * If the start window does not appear even if the CD-ROM is inserted, double-click My Computer on the desktop, then double-click the CD-ROM icon.



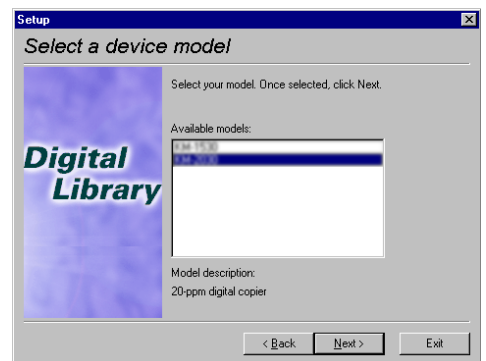
4

The Set-up Wizard window will appear, so click Next.

A list of printer models will appear.

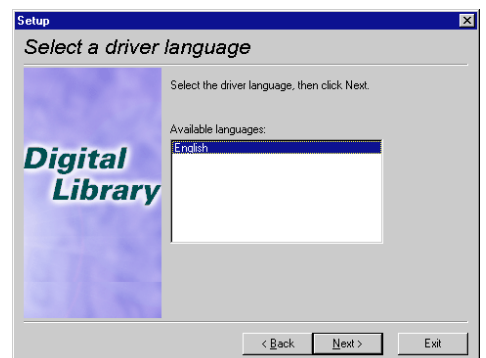
5

Select the printer you are using, then click Next.



6

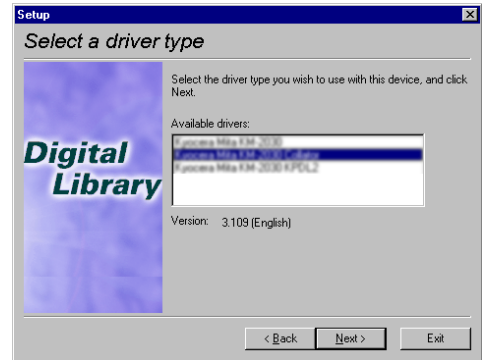
The language to be used can be selected. Select the desired language from the box, then click Next.



1. Installing the Printer Drivers

7 Select the driver type.

From the list, select the type of driver to be installed, then click Next.
* Refer to "1-1 Included printer Drivers" on page 1-1 for information regarding each printer driver.



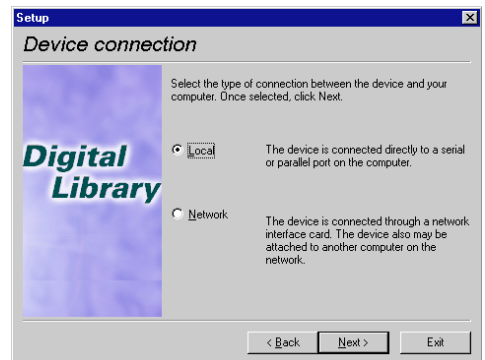
8 The End User Licence Agreement will be displayed. Please read all of the contract and, if you agree with the conditions contained therein, click on [Accept]. If you click on [No] the installation procedure will quit.

9 All available options will be displayed. Select the items that you want to install and then click on the [Next] button.

10 Select the connection type: Local or Network.

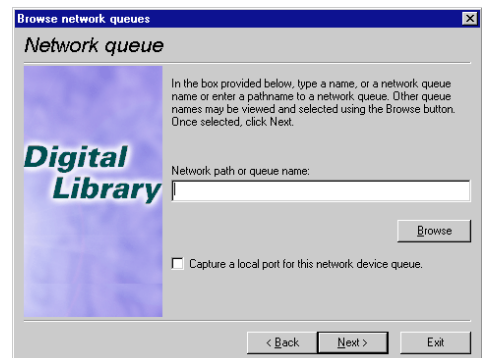
- Local: The printer is connected directly to the parallel port.
- Network: The printer is connected to the printer via network (using a network interface).

* If Local is selected, proceed to step 12. If Network is selected, proceed to step 11.



11 Enter the network queue name or the path for the network queue in the box.

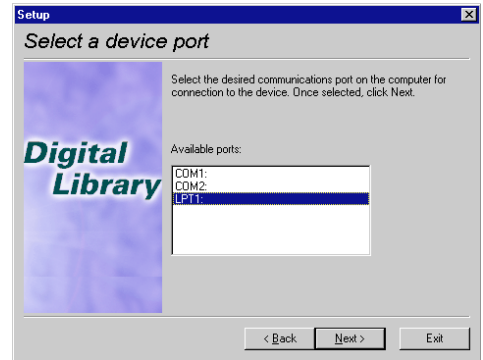
To select another network queue name, press Browse.
If you are going to use a local port for the network queue, click the check box displayed below, then proceed to step 12.
Otherwise, proceed to step 13.



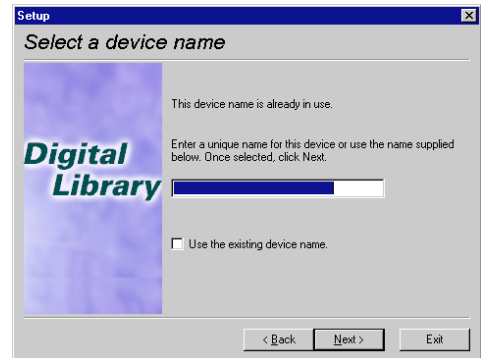
1. Installing the Printer Drivers

12 Select a printer port. From the list, select the desired port, then click Next.

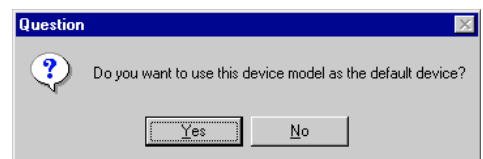
- * Normally, set to LPT1.
- * When installing the printer driver for Windows NT, the Add LPR Port button will appear below the box, so press the button to set the desired LPR printer.



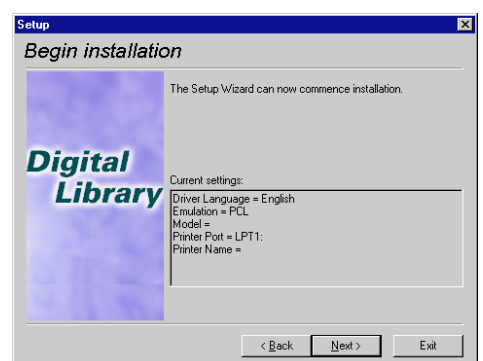
13 A name can be assigned to your printer. Specify a new name or select the desired name from the list, then click Next.



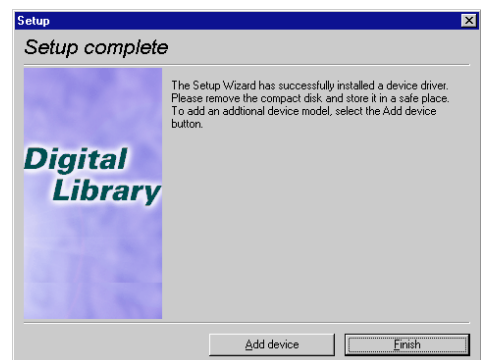
14 Specify whether this printer is to be used as the default printer. Click Yes if so, or click No if not.



15 The settings you have made so far will appear. If they are correct, click Next. Installation of the printer driver will start.



16 To exit installation, click Finish.
* If you want to add another printer driver, click Add Printer and then repeat the same procedure.
Installation of the printer driver is now complete.



1. Installing the Printer Drivers

1-5 Uninstalling the Printer Driver

The following procedure explains how to uninstall the printer drivers. The uninstall program can be found on the CD-ROM that is included with this product.

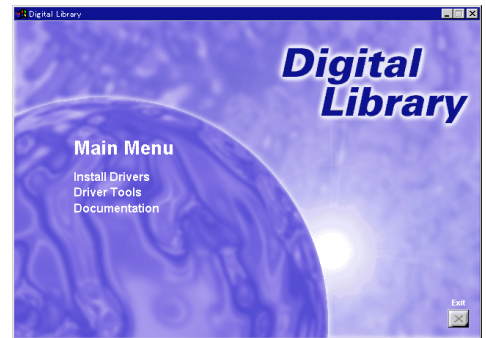
1

Start Windows.

2

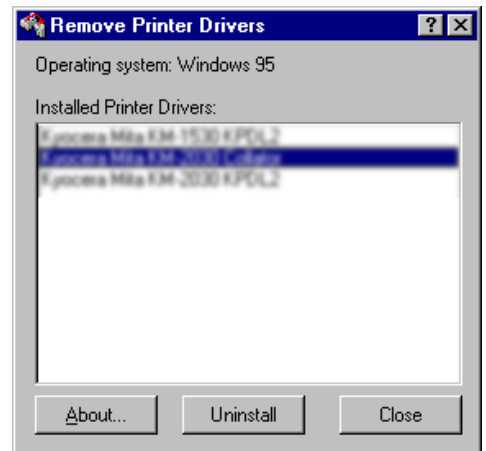
Insert the printer driver installer CD-ROM into the CD-ROM drive on your computer.

The window shown on the right will appear.



3

Click on [Driver Tools] and then on [Remove Drivers] from the subsequent menu. The [Remove Printer Drivers] dialog box will appear. Select the driver that you want to delete and then click on [Uninstall].



4

A message to verify whether or not you really want to delete that driver will appear. If you DO want to delete the selected driver, click on [Yes]. The selected driver will be deleted.

1. Procedure for Installing and Printing with a Printer Driver

1-6 Printing

The following is an example procedure for printing using a printer driver under the conditions and environment noted below.

- OS : Windows 95
- Printer driver : KPDL2 Driver
- Application : Wordpad
- Printing conditions : Print and staple

If you use a system or driver other than that noted above, use the following procedure simply as a reference tool. It is additionally recommended that you read the section corresponding to your operation system as it will contain further explanations specifically regard that OS and other related drivers.

1

● Making the printer driver settings in Windows

Click on [Start] on the Task Bar.

The Start menu will appear.

2

Use the mouse to point to [Settings] and click on [Printers] in the corresponding submenu.

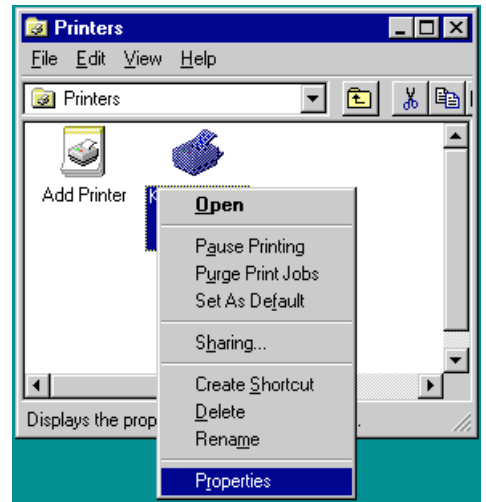
The [Printers] folder will open.

3

Use the right mouse button to click on the icon for this printer. A pop-up menu will be displayed.

Select [Properties] from that menu.

The Properties window will appear.



4

Click on the [Device Options] Tab.

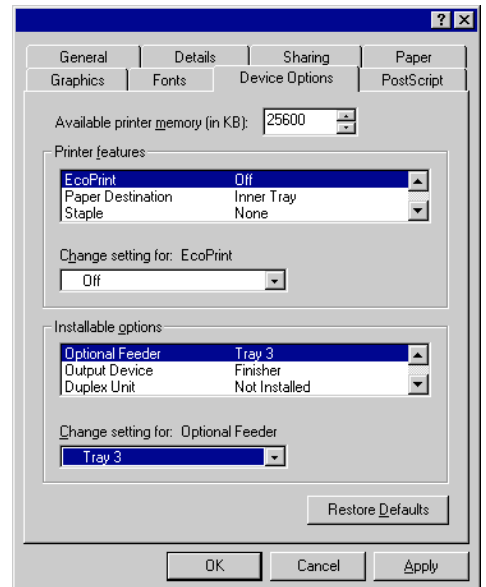
5

Perform the following settings in order to staple your printed sets.

“Installable Options” setting

- ① Select “Finisher” as the “Output Device” setting.
- ② Set the “VM Option” setting to more than 24 MB.
(It is necessary to increase the memory capacity of your printer.)
- ③ Select “RAM Disk” under “Optional Disk”.

Once you have completed these settings, click on [OK].



1. Procedure for Installing and Printing with a Printer Driver

6

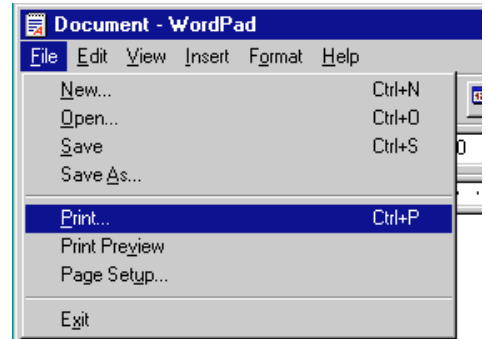
● **Printing from the application**

Use the application that you want to use to open the document that you want to print.

7

Select [Print] in the [File] menu.

The [Print] dialogue box will appear.



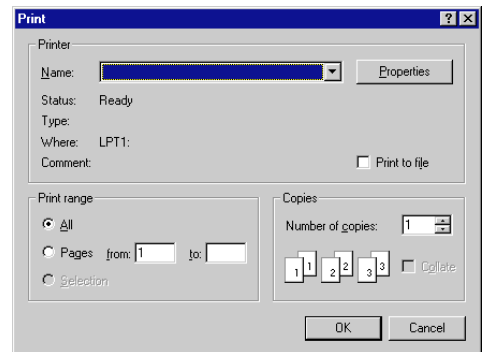
8

Select the desired number of copies that you want to make and which pages are to be printed.

Select this printer in the [Name] field.

Click on [Properties].

The Properties window will appear.



9

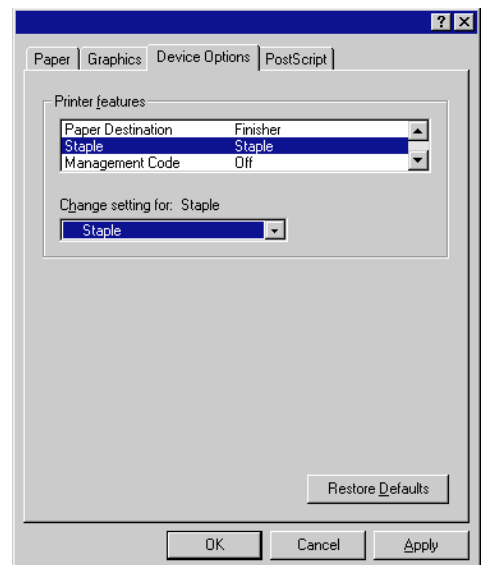
Click on the [Device Options] Tab.

10

Perform the following settings in order to staple your printed sets.

“Printer Features” setting

- ① Select “Temporary” as the “Job Spooling” setting.
- ② Select “Finisher” as the “Paper Destination” setting.
- ③ Select “Staple” as the “Staple” setting.



11

Click on [OK]. You will be returned to the [Print] dialogue box. Click on [OK] once again. Printing will begin.

2. Windows XL Driver

The following section explains the functions of the XL driver.

- * This Instruction Handbook uses illustrations from the message display of the 20 ppm copier for purposes of explanation, but the actual basic operation procedure is the same for 15 ppm copiers as well.
- * The following procedure is explained as though it is being carried out in Windows 2000. If you are using another operating system, use this procedure simply as reference.
- * Depending upon version upgrades of the printer driver, the screenshots shown here may differ somewhat from that of the actual printer driver.
- * Depending upon the model of your copier, there may be functions that are not supported or that require optional equipment to be installed. Even if the settings for such functions are performed, they will not be effective.
- * Refer to the Instruction Manual for Windows regarding items that are not explained in this Instruction Handbook.

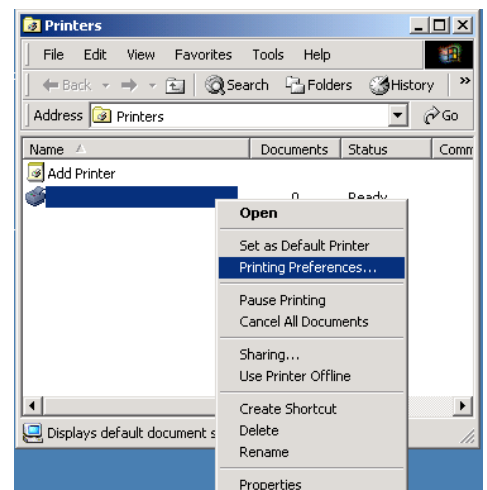
2-1 Making printing and property settings

1 Start up Windows.

2 Click on [Start] in the Task Bar.
The [Start] menu will be displayed.

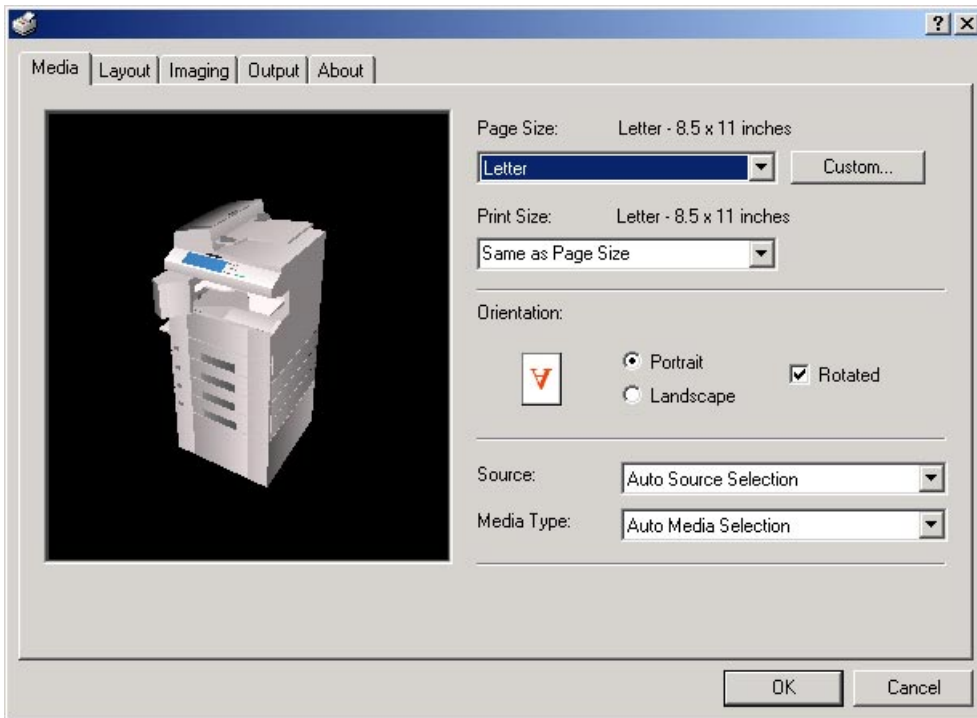
3 Use the mouse to point to [Settings] and click on [Printers] in the submenu that is displayed. The [Printers] folder will open.

4 Use the right mouse button to click on the icon for this printer. A pop-up menu will be displayed.
Select [Printing Preferences] from the menu.
The Printing Preferences window will open.
* When you are making settings for optional equipment, select [Properties] here and then click on the [Device Settings] Tab.



2. Windows XL Driver

2-2 Media Tab



■ **Paper Size:**

Allows you to select a standard size of paper or an envelope size. The following sizes of paper or envelope can be used with this printer.

Standard-size paper sheet	Letter (8-1/2" x 11"), Legal (8-1/2" x 14"), Ledger (11" x 17"), Statement (5-1/2" x 8-1/2"), A3, A4, A5, A6, JIS B4, B5, JIS B6 and Folio
Envelope	COM-10, Monarch, DL and C5

■ **Custom...**

Click on this button when you want to print onto a non-standard size of paper. The [Custom Media Size] dialog box will appear. Refer to "2-2-1 Custom Media Size" on page 2-3 for more detailed information.

■ **Print Size:**

Allows you to select the size of the printed image. The image size will be enlarged or reduced according to difference in the setting made here and in the "Page Size" field.

■ **Orientation:**

Sets the orientation of printing.

[Portrait] The image will be printed vertically.

[Landscape] The image will be printed horizontally.

[Rotated] Select this checkbox by clicking on it and putting a check mark in the box in order to have the image printed upside-down.

■ **Source:**

You can select the source of paper feed according to the desired tray. Selection is possible from among the following items. If you select "Auto Source Selection", the printer will automatically choose the tray that contains the most appropriate paper for the job. The factory default setting is "Auto Source Selection".

Tray	Auto Source Selection, Tray 1, Tray 2, Tray 3, Tray 4, Bypass Tray
------	--

* 20 ppm copier: Tray 3 and Tray 4 are available only when the Option Cassette is installed.

* 15 ppm copier: Tray 2, Tray 3 and Tray 4 are available only when the Option Cassette is installed.

■ **Media Type:**

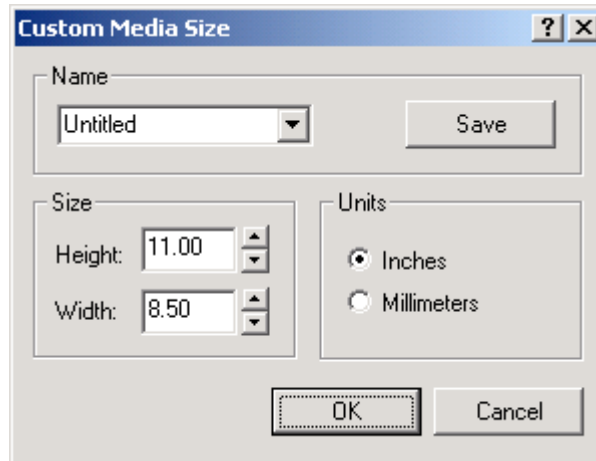
You can select the source of paper feed according to the desired type of paper. Selection is possible from among the following items. If you do not want to designate a specific type of paper, select "Auto Media Selection". The factory default setting is "Auto Media Selection".

Paper type	Auto Media Selection, Plain, Transparency, Labels, Recycled, Rough, Letter-head, Color, Envelope, Card Stock
------------	--

* Selection according to the desired type of paper is NOT available in 15 ppm copiers.

2. Windows XL Driver

2-2-1 Custom Media Size dialog box



■ Setting a custom paper size

Perform the following procedure in order to register a custom size when you want to print onto a non-standard size of paper. The information registered here will be displayed under the “Page Size” setting in the Media Tab as well as in the Paper Size setting of your application.

1

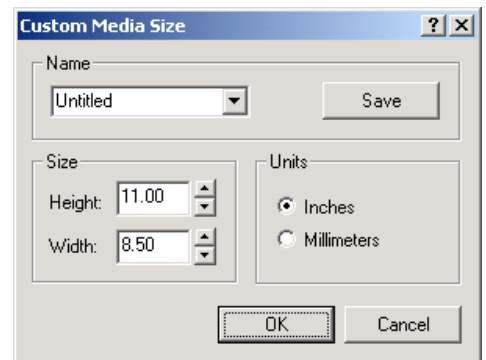
Select the desired unit of measurement in the “Units” block and the desired dimensions of the paper in the “Size” block.

<Available settings>

Units: “Inches” or “Millimeters”

Height: 5.83 - 17.00 [Inches]
148.1 - 431.8 [Millimeters]

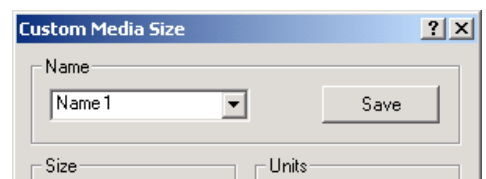
Width: 3.88 - 11.69 [Inches]
98.4 - 297.0 [Millimeters]



2

Type into the “Name” field the name you want to use for this custom size of paper.

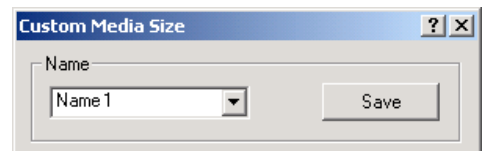
* It is the name that you register here that will actually be displayed under the “Page Size” setting.



3

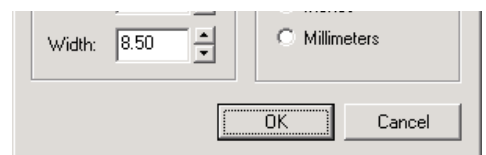
Click on the “Save” button.

* The “Save” button will change to the “Delete” button when you are deleting a media size that is already registered, and to the “Rename” button when you are changing the name of a registered media size.



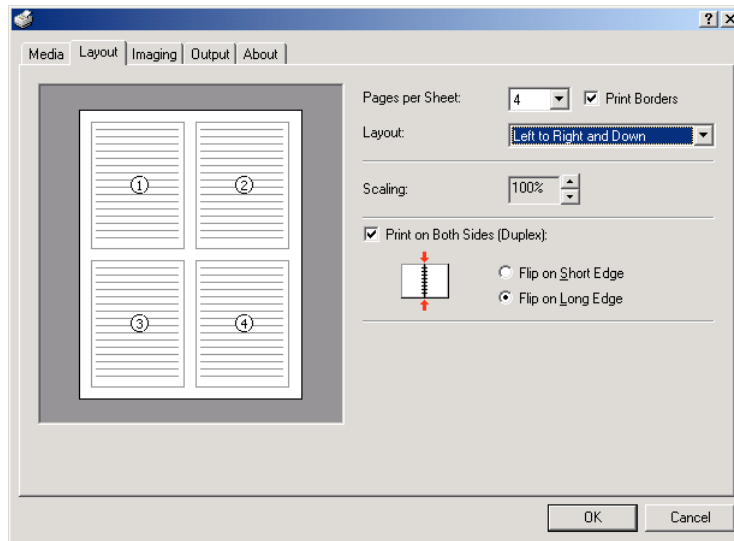
4

Click on the “OK” button.



2. Windows XL Driver

2-3 Layout Tab

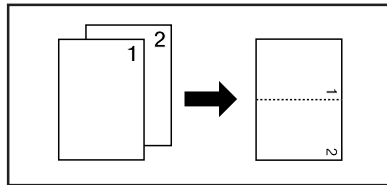


■ Pages per Sheet:

Allows you to print reduced images of multiple (1, 2, 4, 6, 9, 16 or 25) pages onto a single sheet of paper. This function is called "N-Up" printing (where "N" equals the number of image pages). Reduction of the images is calculated automatically so that all of the selected pages fit onto the single sheet of paper. The factory default setting is "1" (one page to each sheet of paper).

Example: With 2-Up printing

Prints reduced images of 2 full pages onto a single sheet of paper.



■ Print Borders

Prints border lines between the different images when the "Pages per Sheet" function is selected.

■ Layout

Specifies the order of display of the images when the "Pages per Sheet" function is selected.

■ Scaling

Allows enlargement or reduction of the image size.

Note

The image size will normally be enlarged or reduced according to the difference in the setting made in the "Page Size" and "Print Size" fields. If you then change the setting here, the actual magnification will be based on the original settings and the image may be even further enlarged or reduced.

■ Print on Both Sides [Duplex]

Select this checkbox by clicking on it and putting a check mark in the box in order to perform Duplex (2-sided) printing. You can then select the desired image direction for each side of the paper.

[Flip on Short Edge] Select this option when making duplex prints in order to have the image on the two sides of the paper printed in the opposite direction from each other, as though the paper was turned over along its shorter edge.

[Flip on Long Edge] Select this option when making duplex prints in order to have the image on the two sides of the paper printed in the same direction as each other, as though the paper was turned over along its longer edge.

* 20 ppm copier: Available only when the optional Duplex Unit is installed.

* 15 ppm copier: Duplex printing is NOT available.

* Paper sizes, types and source of paper feed that are acceptable for duplex printing are as follows:

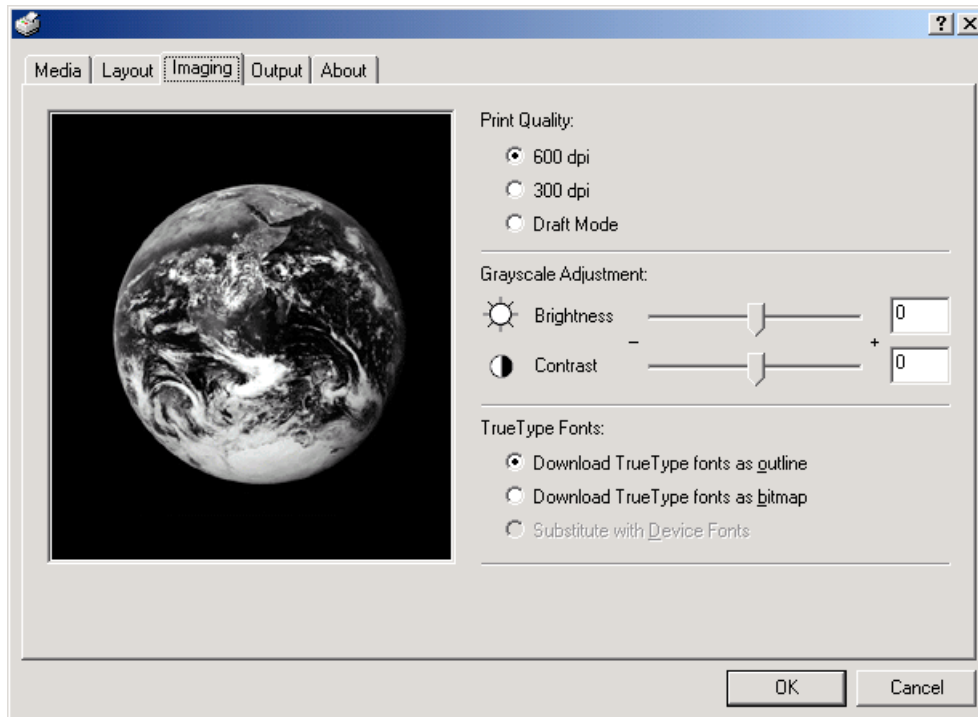
Paper sizes: Letter (8 1/2" x 11"), Legal (8 1/2" x 14"), Ledger (11" x 17"), Statement (5 1/2" x 8 1/2"), A3, A4, A5, Folio (210 mm x 330 mm), JIS B4 and JIS B5

Paper types: Plain, Recycled and Color

Source of paper feed: Any tray EXCEPT the Bypass Tray

2. Windows XL Driver

2-4 Imaging Tab



■ Print Quality:

Specifies the printing resolution (number of dots per inch) to be used when printing. Select between “600 dpi [High]”, “300 dpi [Low]” and “Draft Mode”. If you select the “Draft Mode” option, printing will be accomplished printing in a toner-saving mode. This mode is especially suited for test pages, etc., where high printing quality is not required.

■ Grayscale Adjustment

Adjusts the brightness and contrast of the printed image. The factory default for both settings is “0”.

[Brightness] Adjusts the brightness of the image. When you want to print the image brighter than the actual original, drag the slider towards the plus “+” sign, or type in a positive number directly into the field at the right of the slider bar. Conversely, when you want to print the image darker than the actual original, drag the slider towards the minus “-” sign, or type in a negative number directly into that field.

[Contrast] Adjusts the contrast of the image. When you want to print at a sharper image contrast, drag the slider towards the plus “+” sign, or type in the desired value (a positive number) directly into the field at the right of the slider bar. Conversely, when you want to print at a softer image contrast, drag the slider towards the minus “-” sign, or type in a negative number directly into that field.

■ TrueType Fonts

Selects the method of printing with fonts. The factory default setting is “Download TrueType fonts as outline”.

[Download TrueType fonts as outline]

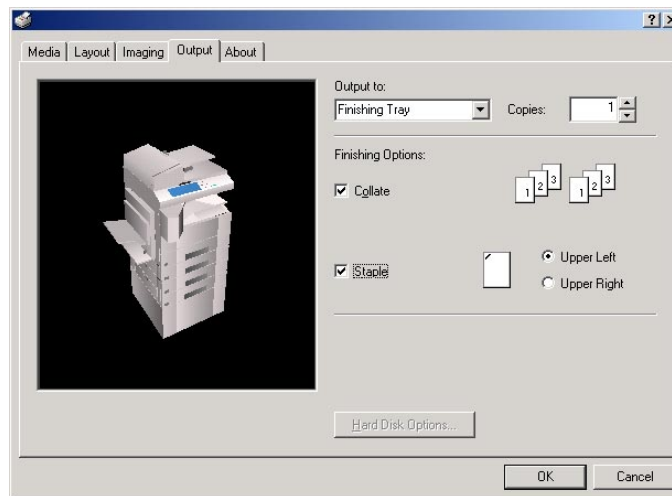
..... TrueType fonts will be downloaded to the printer as outline fonts for printing.

[Download TrueType fonts as bitmap]

..... TrueType fonts will be downloaded to the printer as bitmap fonts for printing.

2. Windows XL Driver

2-5 Output Tab



■ Output to:

Specifies the location of ejection of printed copies.

Selection is possible when the optional Job Separator and/or Finisher are installed.

[Inner Tray] Copies will be ejected onto the Inner tray.

[Separator Tray] Copies will be ejected into the optional Job Separator.

[Finishing Tray] Copies will be ejected into the optional Finisher. (Only available in the 20 ppm copier)

* In order to set the location of ejection for the Job Separator or Finisher, it is necessary to first perform the setting for that optional equipment under "Device Options" on page 2-7.

* Paper sizes and types that are acceptable for use with the Job Separator are as follows:

Paper sizes: Letter (8 1/2" x 11"), Legal (8 1/2" x 14"), Ledger (11" x 17"), Statement (5 1/2" x 8 1/2"), A3, A4, A5, Folio (210 mm x 330 mm), JIS B4 and JIS B5

Paper types: Plain, Letterhead, Recycled and Color

* Paper sizes, types and source of paper feed that are acceptable for use with the Finisher are as follows:

Paper sizes: Letter (8 1/2" x 11"), Legal (8 1/2" x 14"), Ledger (11" x 17"), A3, A4, Folio (210 mm x 330 mm), JIS B4 and JIS B5

Paper types: Plain, Letterhead, Recycled and Color

Source of paper feed: Any tray EXCEPT the Bypass Tray

■ Copies

Specifies the number of prints to be made. Select between 1 and 999 copies by clicking on the arrows at the right of the field or by typing the desired number directly into the field. The factory default setting is "1".

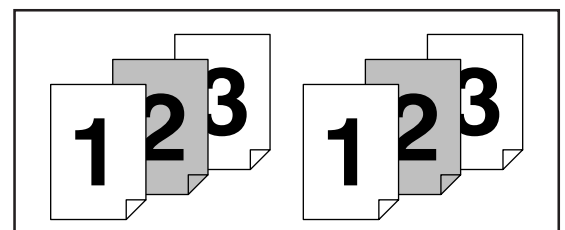
■ Collate

When you are printing more than one copy of one or more pages, it is possible to sort the printed copy sets.

* It is necessary to create a RAM disk. (Refer to "RAM disk" on page 2-7)

* If you select to turn on the "Staple" setting below, it is necessary to select "Collate" here.

Example: If the "Collate" option is selected, it is possible to print out 2 sets of the same copies.



■ Staple

Stapling is possible if the optional finisher is installed.

* Stapling is only available with 20 ppm copiers.

* The following settings are required before stapling is possible:

(1) "Device Options" setting in the "Device Settings" Tab

Select "Internal Finisher" and "RAM Disk".

(2) "Output" Tab

Select "Finishing Tray" as the "Output to" setting and select "Collate" as well.

* Paper sizes, types and source of paper feed that are acceptable for stapling are as follows:

Paper sizes: Letter (8 1/2" x 11"), Legal (8 1/2" x 14"), Ledger (11" x 17"), A3, A4, JIS B4 and JIS B5

Paper types: Plain, Letterhead, Recycled and Color

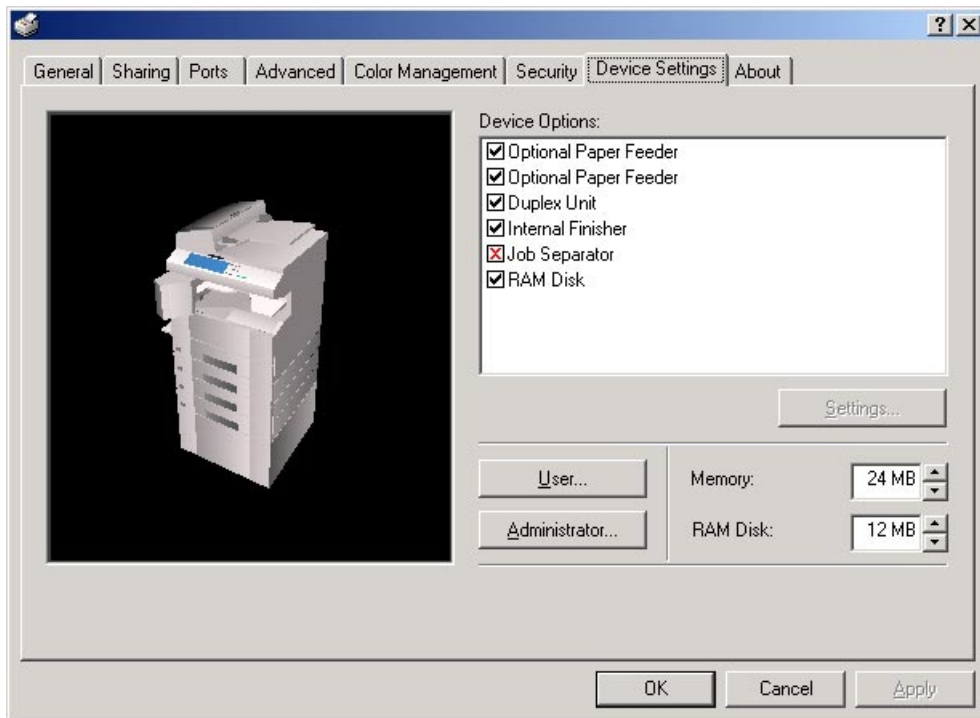
Source of paper feed: Any tray EXCEPT the Bypass Tray

Note

The location of the staples will depend upon the orientation of the paper and the direction of the printed image. Thus, when you click on either of the options ("Upper Left" and "Upper Right") a message will be displayed in order to verify the orientation of the paper.

2. Windows XL Driver

2-6 Device Settings Tab



To access the Device Settings screen, in step 4 on page 2-1 select [Properties] from the menu and then click on the Device Settings Tab. When you have added optional equipment, make the appropriate settings for that equipment here. Once the corresponding setting is complete, the corresponding function of the installed option will be added to the printer. Copy Management related settings are made here as well.

■ Device Options

Select and installed options here. Once you have completed the setting for each option, the functions of that option will be available for use.

● Optional Paper Feeder

Perform this setting according to the installed Option Cassette.

● Duplex Unit

Perform this setting when the optional Duplex Unit (only available with 20 ppm copiers) is installed.

● Internal Finisher

Perform this setting when the optional Finisher (only available with 20 ppm copiers) is installed.

● Job Separator

Perform this setting when the optional Job Separator is installed.

● RAM Disk

Perform this setting when you want to create a RAM disk. Refer to "Chapter 1, 3-2 RAM Disk" on page 3-1 for more detailed information on creating a RAM disk.

* In order to create a RAM disk, it is necessary to increase the memory capacity of your printer. After increasing memory, perform the setting here according to the "Memory" setting below.

■ Memory

Specifies the amount of memory installed in the printer. If you make a mistake in the setting here, it is possible that printing will not be accomplished properly.

■ RAM Disk

Specifies the amount of memory to be used for the RAM disk. This setting will only be available when you have selected "RAM Disk" in the "Device Options" list.

■ User...

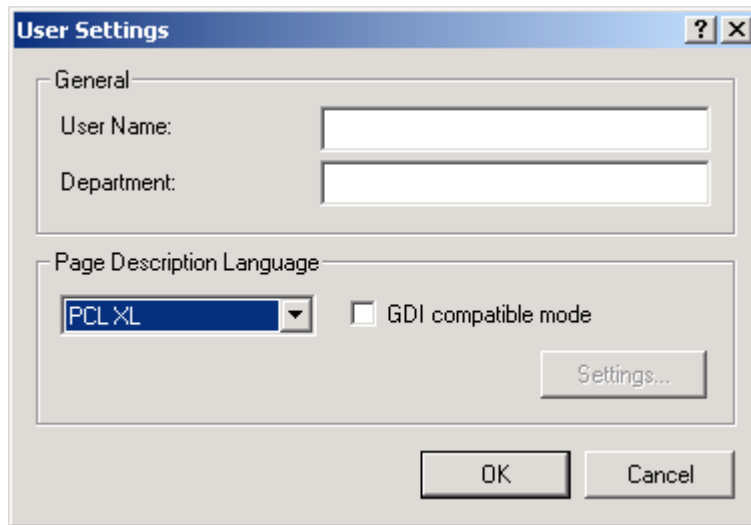
Click on this button when you want to register a user and/or department name. The [User Settings] dialog box will appear. It is also possible to select the "GDI compatible mode" from that dialog box. Refer to "2-6-1 User Settings" on page 2-8 for more detailed information.

■ Administrator...

Click on this button when Copy Management is Turned ON in the printer. The [Administrator Settings] dialog box will appear. Refer to "2-6-2 Administrator Settings" on page 2-8 for more detailed information.

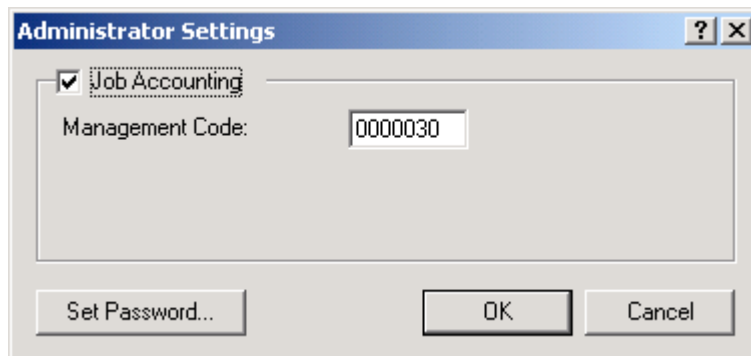
2. Windows XL Driver

2-6-1 User Settings



- **General**
Register the desired user and/or department name.
- **Page Description Language**
The emulation modes that can be used with this product will be displayed in the dropdown list. If multiple modes are displayed, it is possible to select the desired mode.
- **GDI compatible mode**
Select this mode in order to accomplish printing that is more accurate to the data shown on your monitor. Select this mode if text corruption, etc., does happen to occur or if the image is in any other way not printed correctly.

2-6-2 Administrator Settings



- **Job Accounting**
This setting is used when Copy Management is turned ON in the printer. If the Management code that you enter in the "Management Code" field here and that registered in the printer itself do not match, printing will not be possible.
 - * If Copy Management is turned ON and this setting does not match the setting made in the printer itself, it will not be possible to make test prints. Thus, when you install the printer driver, you will need to check the Copy Management settings and make a test print AFTER the installation procedure is complete.
 - * When Copy Management is turned ON, even if you send a print command with a DOS "COPY" command, printing will not be possible if you do not use a printer driver.
- **Set Password**
Click on this button if you want to add a password to this setting. The [Set password] dialog box will appear.

Note

If, for any reason, you lose reference to this password, you will not be able to change the Management Code. Therefore, you should exercise DUE CAUTION in the management of the password that you register here.

3. Printer Driver for Windows 95/98

The following procedure explains the functions of the Universal driver and the KPDL2 driver for those who use Windows 95 or Windows 98 as their operating system.

- * This Instruction Handbook uses illustrations from the message display of the 20 ppm copier for purposes of explanation, but the actual basic operation procedure is the same for 15 ppm copiers as well.
- * Depending upon version upgrades of the printer driver, the screenshots shown here may differ somewhat from that of the actual printer driver.
- * Depending upon the model of your copier, there may be functions that are not supported or that require optional equipment to be installed. Even if the settings for such functions are performed, they will not be effective.
- * Refer to the Instruction Manual for Windows or to On-Line Help for information regarding items that are not explained in this Instruction Handbook.
- * Two printer drivers have been included with this product: a standard printer driver and a Collator-compatible driver. Refer to "1. Procedure for Installing and Printing with a Printer Driver" on page 1-1 for more detailed information.
- * If you use the KPDL2 driver, be sure to set the emulation mode in the printer to "KPDL" or "KPDL(AUTO)".

3-1 Opening the Properties Window

1

Start Windows 95 or Windows 98.

2

Click on [Start] on the task bar.

The Start menu will appear.

3

Use the mouse to point to [Settings]. A submenu will appear, so click on [Printers].

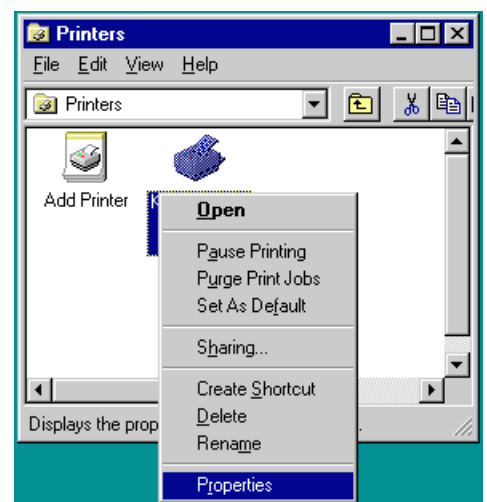
The [Printers] folder will open.

4

Use the right mouse button to click on the icon for this printer. A pop-up menu will be displayed.

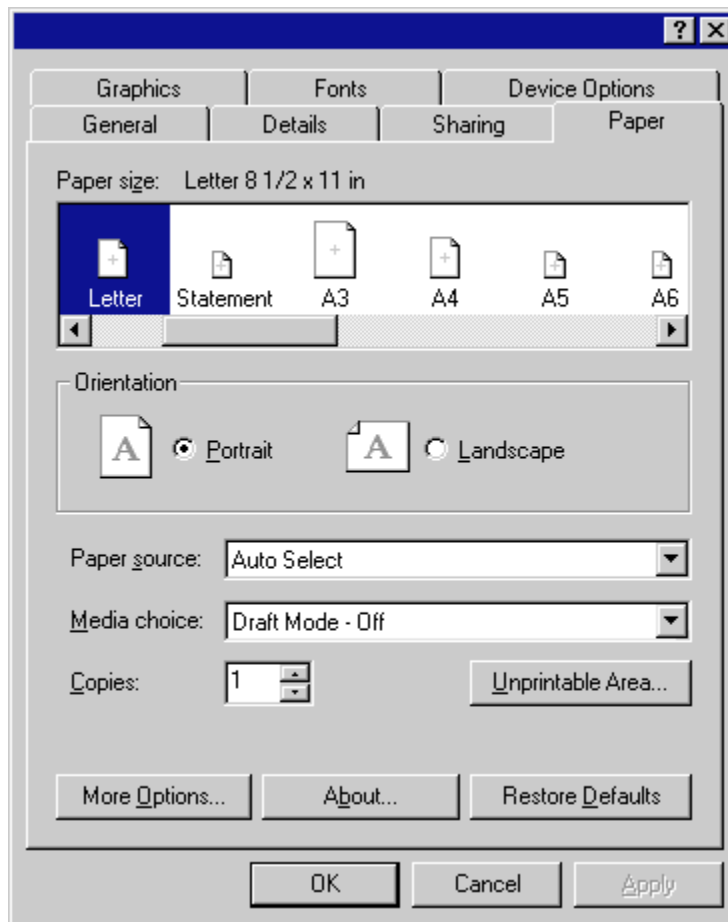
Select [Properties] from the menu.

The Properties window will appear.



3. Printer Driver for Windows 95/98

3-2 Paper Tab (Universal Driver)



■ **Paper size:**

Select the size of standard-size paper sheet or envelope.

The following standard-size paper sheets and envelopes can be used with this printer:

Standard-size paper sheet	Letter (8 1/2" x 11"), Legal (8 1/2" x 14"), Tabloid (11" x 17"), Statement (5 1/2" x 8 1/2"), A3, A4, A5, A6, Folio (210 x 330 mm), JIS B4, JIS B5, JIS B6
Envelope	COM-10, Monarch, DL, C5

■ **Orientation:**

Select the print orientation from the following:

[Portrait] Prints lengthwise.

[Landscape] Prints widthwise.

■ **Paper source:**

You can select the source of paper feed according to the desired tray. Selection is possible from among the following items. If you select "Auto Select", the printer will automatically select the tray that contains the most appropriate paper for the job. The factory default setting is "Auto Select".

Tray	Auto Select, Tray 1, Tray 2, Tray 3, Tray 4, Bypass Tray
------	--

* 20 ppm copier: Tray 3 and Tray 4 are available only when the Option Cassette is installed.

* 15 ppm copier: Tray 2, Tray 3 and Tray 4 are available only when the Option Cassette is installed.

■ **Media choice(Draft Mode)**

Saves on toner. The factory default setting is "Off".

■ **Unprintable Area...**

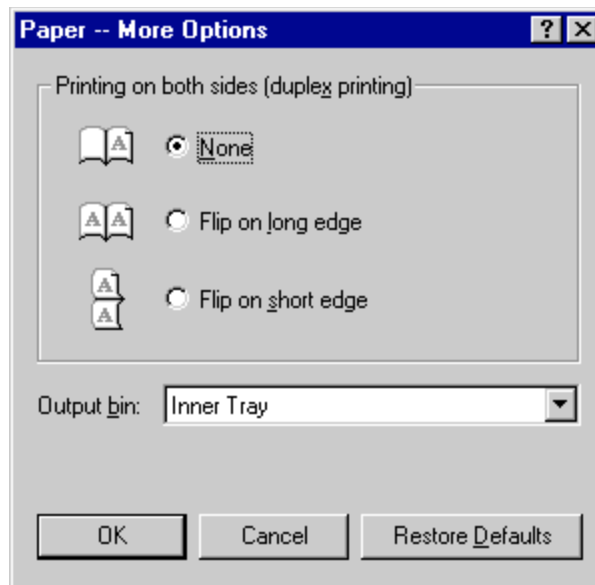
Click this button in order to open the Unprintable Area dialog box and set the area that should not be printed onto.

■ **More Options...**

Click this button in order to open the Paper -- More Options dialog box and then refer to "3-2-1 Paper -- More Options" on page 3-3 for more detailed information.

3. Printer Driver for Windows 95/98

3-2-1 Paper -- More Options (Universal Driver)



■ Printing on both sides (duplex printing)

Allows you to set the desired duplex mode. The factory default setting is "None".

[None] Does not print on both sides.

[Flip on long edge] Prints on both sides and binds along the longer edge.

[Flip on short edge] Prints on both sides and binds along the shorter edge.

* 20 ppm copier: Available only when the optional Duplex Unit is installed.

* 15 ppm copier: Duplex printing is NOT available.

* Paper sizes and source of paper feed that are acceptable for duplex printing are as follows:

Paper sizes: Letter (8 1/2" x 11"), Legal (8 1/2" x 14"), Tabloid (11" x 17"), Statement (5 1/2" x 8 1/2"), A3, A4, A5, Folio (210 mm x 330 mm), JIS B4 and JIS B5

Source of paper feed: Any tray EXCEPT the Bypass Tray

■ Output bin:

Allows you to select the location of ejection and whether you want to staple the copy sets or not when the optional Job Separator or Finisher is installed.

[Inner Tray] Copies will be ejected onto the Inner tray.

[Job Separator] Copies will be ejected into the optional Job Separator.

[Finisher(Staple Off)] Copies will be ejected into the optional Finisher. (Only available in the 20 ppm copiers)

[Finisher(Staple On)] Copies will be stapled and ejected into the optional Finisher. (Only available in the 20 ppm copiers)

* Paper sizes are acceptable for use with the Job Separator are as follows:

Paper sizes: Letter (8 1/2" x 11"), Legal (8 1/2" x 14"), Tabloid (11" x 17"), Statement (5 1/2" x 8 1/2"), A3, A4, A5, Folio (210 mm x 330 mm), JIS B4 and JIS B5

* Paper sizes and source of paper feed that are acceptable for use with the Finisher are as follows:

Paper sizes: Letter (8 1/2" x 11"), Legal (8 1/2" x 14"), Tabloid (11" x 17"), A3, A4, Folio (210 mm x 330 mm), JIS B4 and JIS B5

Source of paper feed: Any tray EXCEPT the Bypass Tray

* Paper sizes and source of paper feed that are acceptable for stapling are as follows:

Paper sizes: Letter (8 1/2" x 11"), Legal (8 1/2" x 14"), Tabloid (11" x 17"), A3, A4, JIS B4 and JIS B5

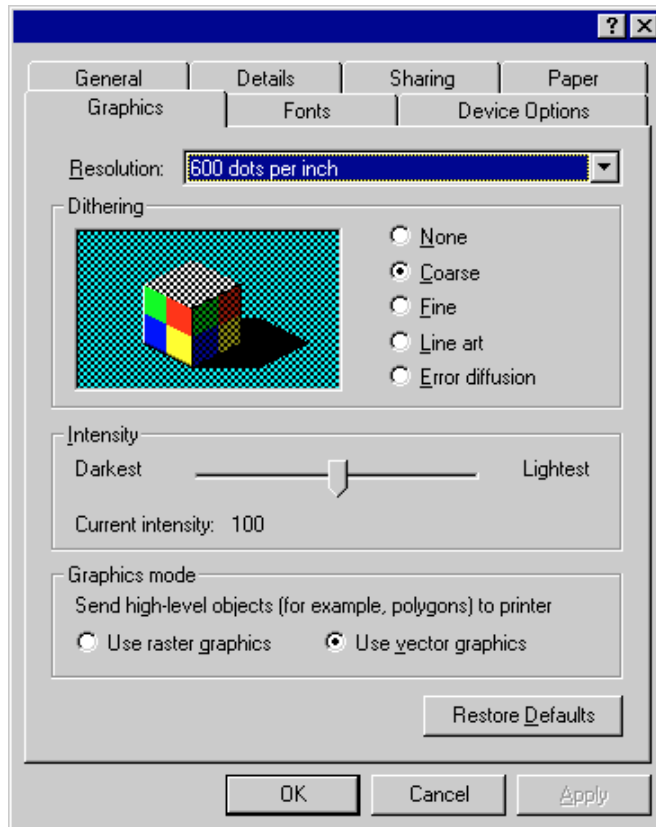
Source of paper feed: Any tray EXCEPT the Bypass Tray

Note

If you want to staple your printed sets, be sure to use a Collator driver. (Refer to "Collator driver" on page 1-1.)

3. Printer Driver for Windows 95/98

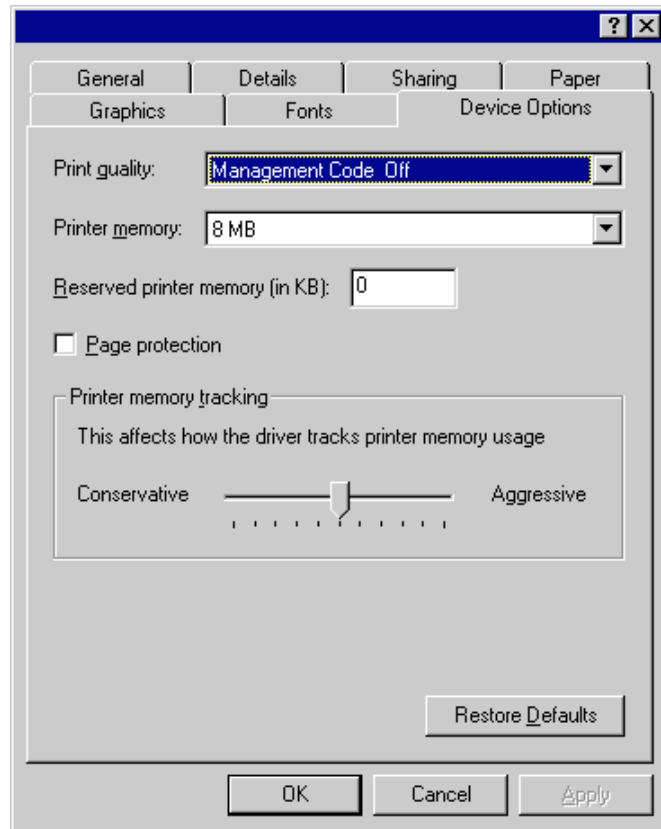
3-3 Graphics Tab (Universal Driver)



- **Resolution:**
Specify the desired print resolution. The resolution must be specified in the number of dots per inch (dpi). Select between “600 x 600 dots per inch” and “300 x 300 dots per inch”. The factory default setting is “600 dots per inch”.
- **Dithering**
Specifies the method of Dithering. Refer to On-Line Help for more detailed information.
- **Intensity**
Allows you to adjust the printing contrast. Drag the slider towards “Darkest” or “Lightest”, as appropriate.
- **Graphics mode**
Selects the method of data transmission when printing detailed objects. Generally, if you select “Use vector graphics” printing speed will be increased. However, if you experience trouble (the positioning of objects is not correct, etc.) select “Use raster graphics”.

3. Printer Driver for Windows 95/98

3-4 Device Option Tab (Universal Driver)



■ Print quality:(Management Code)

This setting is used when Copy Management is turned ON in the printer.

If the Management code that you selected from the dropdown list here and that selected in the printer itself do not match, printing will not be possible. The factory default setting is "Management Code Off".

* If Copy Management is turned ON and this setting does not match the setting made in the printer itself, it will not be possible to make test prints. Thus, when you install the printer driver, you will need to check the Copy Management settings and make a test print AFTER the installation procedure is complete.

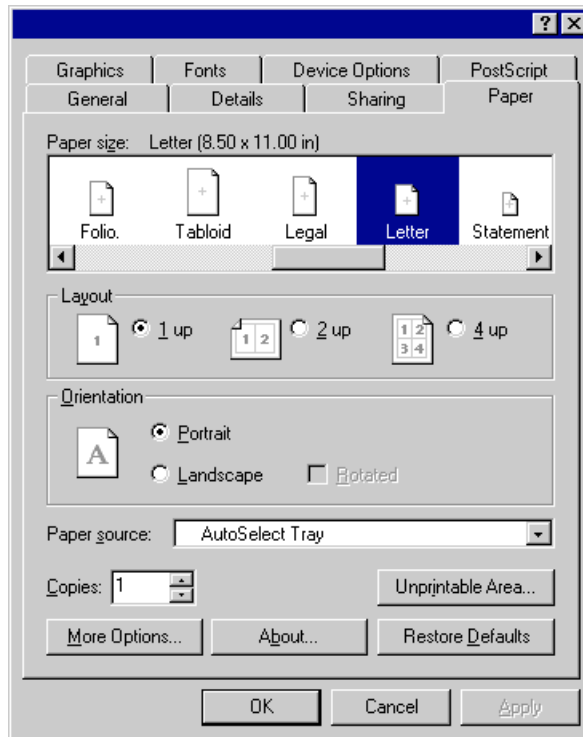
* When Copy Management is turned ON, even if you send a print command with a DOS "COPY" command, printing will not be possible if you do not use a printer driver.

■ Printer memory:

Perform this setting according to the amount of memory in your printer. If a mistake is made in this setting, there is a possibility that printing will not be accomplished properly.

3. Printer Driver for Windows 95/98

3-5 Paper Tab (KPD2 Driver)



■ **Paper Size:**

Select the size of standard-size paper sheet or envelope.
The following standard-size paper sheets and envelopes can be used with this printer:

Standard-size paper sheet	Letter (8 1/2" x 11"), Legal (8 1/2" x 14"), Tabloid (11" x 17"), Statement (5 1/2" x 8 1/2"), A3, A4, A5, A6, Folio (210 x 330 mm), JIS B4, JIS B5, JIS B6
Envelope	COM-10, Monarch, DL, C5

■ **Layout:**

The Layout options enable you to print out the reduced images of either 2 or 4 full pages onto a single sheet of paper.

■ **Orientation:**

Select the print orientation from the following:
[Portrait] Prints lengthwise.
[Landscape] Prints widthwise.
[Rotated] Prints the image upside-down when "Landscape" is selected.

■ **Paper source:**

You can select the source of paper feed according to the tray or the desired type of paper. Selection is possible from among the following items. If you select "AutoSelect Tray", the printer will automatically select the tray that contains the most appropriate paper for the job. The factory default setting is "AutoSelect Tray".

Paper type	Plain, Transparency, Labels, Recycled, Rough, Letterhead, Color, Envelope, Card Stock
Tray	AutoSelect Tray, Tray 1, Tray 2, Tray 3, Tray 4, Bypass Tray

* It is necessary to perform the settings under "Page Policy" on page 3-10 BEFORE making settings here. If you want to select the source of paper feed according to the type of paper, select "Auto Size Select" there. If you want to select the source of paper feed according to the tray, make sure that "Cassette Base" is selected there. In addition, if you select "AutoSelect Tray" here, be sure that the "Page Policy" setting is set to "Auto Size Select" or there is a possibility that printing will be accomplished onto paper that is difference the expected.
 * 20 ppm copier: Tray 3 and Tray 4 are available only when the Option Cassette is installed.
 * 15 ppm copier: Tray 2, Tray 3 and Tray 4 are available only when the Option Cassette is installed.
 * Selection according to the desired type of paper is NOT available in 15 ppm copiers.

■ **Unprintable Area...**

Click this button in order to open the Unprintable Area dialog box and set the area that should not be printed onto.

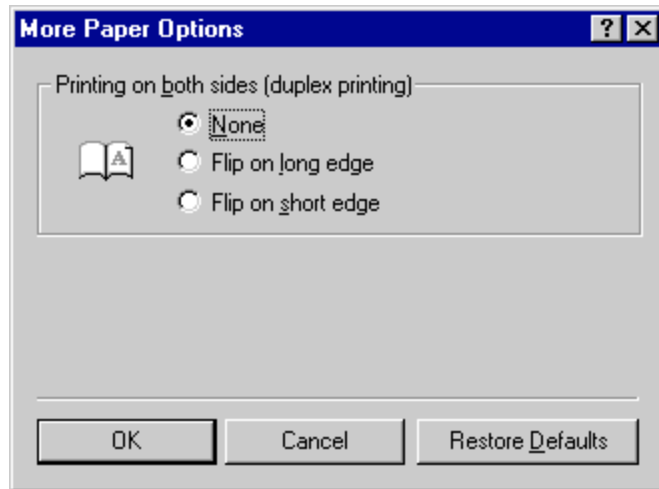
■ **More Options...**

<Only available in the 20 ppm copiers>
Click this button in order to open the More Paper Options dialog box and then refer to "3-5-1 More Paper Options" on page 3-7 for more detailed information.

3. Printer Driver for Windows 95/98

3-5-1 More Paper Options (KPD2 Driver)

<Only available in the 20 ppm copiers>



■ Printing on both sides (duplex printing)

Allows you to set the desired duplex mode. The factory default setting is "None".

[None] Does not print on both sides.

[Flip on long edge] Prints on both sides and binds along the longer edge.

[Flip on short edge] Prints on both sides and binds along the shorter edge.

* 20 ppm copier: Available only when the optional Duplex Unit is installed.

* 15 ppm copier: Duplex printing is NOT available.

* Paper sizes, types and source of paper feed that are acceptable for duplex printing are as follows:

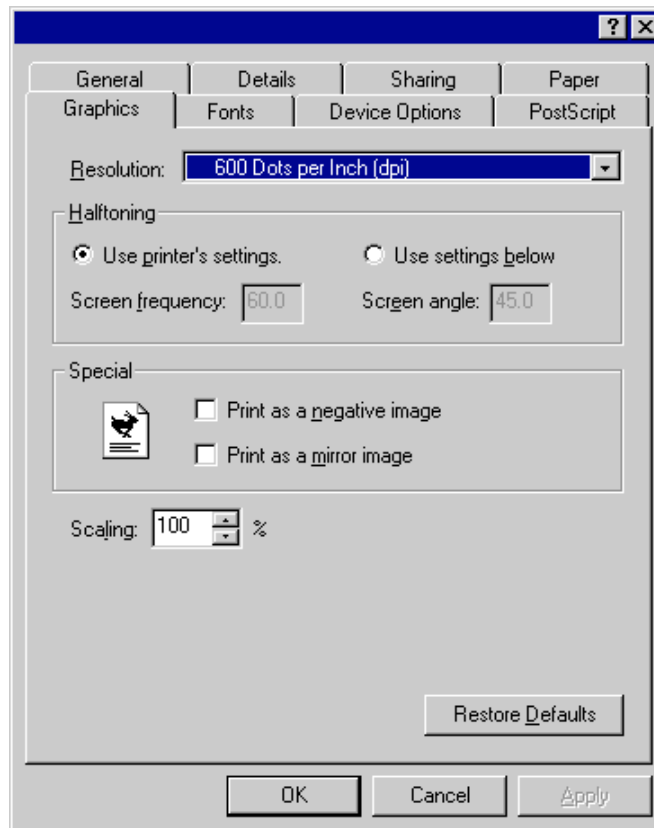
Paper sizes: Letter (8 1/2" x 11"), Legal (8 1/2" x 14"), Tabloid (11" x 17"), Statement (5 1/2" x 8 1/2"), A3, A4, A5, Folio (210 mm x 330 mm), JIS B4 and JIS B5

Paper types: Plain, Recycled and Color

Source of paper feed: Any tray EXCEPT the Bypass Tray

3. Printer Driver for Windows 95/98

3-6 Graphics Tab (KPD2 Driver)

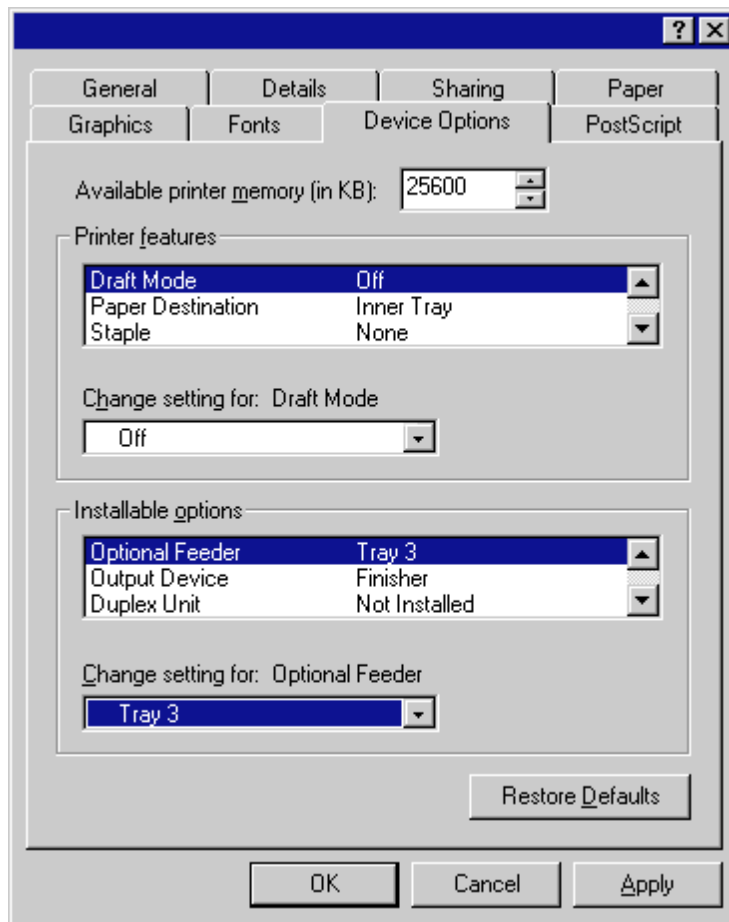


- **Resolution:**
Specify the desired print resolution. The resolution must be specified in the number of dots per inch (dpi). Select between “600 x 600 dots per inch (dpi)” and “300 x 300 dots per inch (dpi)”. The factory default setting is “600 dots per inch (dpi)”.
- **Halftoning:**
Specifies values for the number of line per inch “frequency” and angle of the pattern that you want to use for halftone screens. If you are getting a more pattern when you print graphics such as photographs or detailed images, you may want to adjust these settings. However, the default printer settings should work in most cases.

* Do not change these settings unless you have experience using halftones. To return to the default settings after you have made changes, click Use printer’s settings.
- **Special:**
 - [Print as a negative image] Prints a negative of the image by complementing the RGB values or reversing the black and white values. Click this option to see an example.
 - [Print as a mirror image] Prints a mirror image of the your document by reversing the horizontal coordinates. Click this option to see an example.
- **Scaling:**
Specifies the size of the image to print. You can specify from 25% to 400% prints an image four times larger than the original.

3. Printer Driver for Windows 95/98

3-7 Device Options Tab (KPD2 Driver)



■ Available printer memory (in KB)

Indicates the amount of memory available for printing. As this is determined according to the amount of memory entered as the "VM Option" setting under "Installable Options", there is normally no need to change it.

■ Print features

It is possible to change the settings related to various printer functions. Select the desired function here and then change the setting in the field under "Change setting for: xxxx". Functions available for selection are as follows:

● Draft Mode

Saves on toner. The factory default setting is "Off".

● Paper Destination

Allows you to select the location of ejection when the optional Job Separator or Finisher is installed.

[Inner Tray] Copies will be ejected onto the Inner tray.

[Job Separator] Copies will be ejected into the optional Job Separator.

[Finisher] Copies will be ejected into the optional Finisher. (Only available with 20 ppm copiers.)

* In order to set the location of ejection for the Job Separator or Finisher, it is necessary to first perform the setting for that optional equipment under "Installable options" on page 3-10.

* Paper sizes and types that are acceptable for use with the Job Separator are as follows:

Paper sizes: Letter (8 1/2" x 11"), Legal (8 1/2" x 14"), Tabloid (11" x 17"), Statement (5 1/2" x 8 1/2"), A3, A4, A5, Folio (210 mm x 330 mm), JIS B4 and JIS B5

Paper types: Plain, Letterhead, Recycled and Color

* Paper sizes, types and source of paper feed that are acceptable for use with the Finisher are as follows:

Paper sizes: Letter (8 1/2" x 11"), Legal (8 1/2" x 14"), Tabloid (11" x 17"), A3, A4, Folio (210 mm x 330 mm), JIS B4 and JIS B5

Paper types: Plain, Letterhead, Recycled and Color

Source of paper feed: Any tray EXCEPT the Bypass Tray

3. Printer Driver for Windows 95/98

● Staple

It is possible to staple your copy sets if the optional Finisher is installed.

* Stapling is only available with 20 ppm copiers.

* The following settings are required before stapling is possible:

(1) "Installable Options" setting in the "Device Options" Tab

Select "Finisher" as the "Output Device" setting and "RAM Disk" under "Optional Disk".

(2) "Printer Features" setting in the "Device Options" Tab

Select "Finisher" as the "Paper Destination" setting and "Temporary" under "Job Spooling".

* Paper sizes, types and source of paper feed that are acceptable for stapling are as follows:

Paper sizes: Letter (8 1/2" x 11"), Legal (8 1/2" x 14"), Tabloid (11" x 17"), A3, A4, JIS B4 and JIS B5

Paper types: Plain, Letterhead, Recycled and Color

Source of paper feed: Any tray EXCEPT the Bypass Tray

● Management Code

This setting is used when Copy Management is turned ON in the printer. If the Management code that you selected from the dropdown list here and that selected in the printer itself do not match, printing will not be possible.

* If Copy Management is turned ON and this setting does not match the setting made in the printer itself, it will not be possible to make test prints. Thus, when you install the printer driver, you will need to check the Copy Management settings and make a test print AFTER the installation procedure is complete.

* When Copy Management is turned ON, even if you send a print command with a DOS "COPY" command, printing will not be possible if you do not use a printer driver.

● Edge Smoothing

Turning this setting "On" allows the jaggies that appear around the edge of text and graphics to be evened out through the smoothing process.

● Page Policy

Perform this setting in conjunction with the settings to be made under "Paper source" on page 3-6.

[Auto Size Select] Select this setting when you want to select the source of paper feed according to the type of paper (you are going to select "AutoSelect Tray" under "Paper source").

[Cassette Base] Select this setting when you want to select the source of paper feed according to the tray under "Paper source".

* If you are going to select "AutoSelect Tray" under "Paper source", be sure to select "Auto Size Select" here or there is a possibility that printing will be accomplished onto paper that is difference the expected.

● Job Spooling

When you want to print out more than one set of the same documents, it is possible to have them sorted and ejected one set at a time.

[None] Does not sort.

[Temporary] Sorts and prints in order of sets: Set 1, Set 2, Set 3, etc.

* It is necessary to create a RAM disk. (Refer to "● Optional Disk" below.)

* If you selected any of the "Staple" settings above, it is necessary to select "Temporary" here.

■ Installable options

Perform the settings here whenever you add optional equipment. The functions of the optional equipment will only be available to the printer after you have completed the setting here. Select the desired optional equipment here and then change the setting in the field under "Change setting for: xxxx". The optional equipment available for selection are as follows:

● Optional Feeder

Perform this setting according to the installed Option Cassette.

● Output Device

Perform this setting when the optional Job Separator or Finisher (only available with 20 ppm copiers) are installed.

● Duplex Unit

Perform this setting when the optional Duplex Unit (only available with 20 ppm copiers) is installed.

● Optional Disk

Perform this setting when you want to create a RAM disk. Refer to "Chapter 1, 3-2 RAM Disk" on page 3-1 for more detailed information on creating a RAM disk.

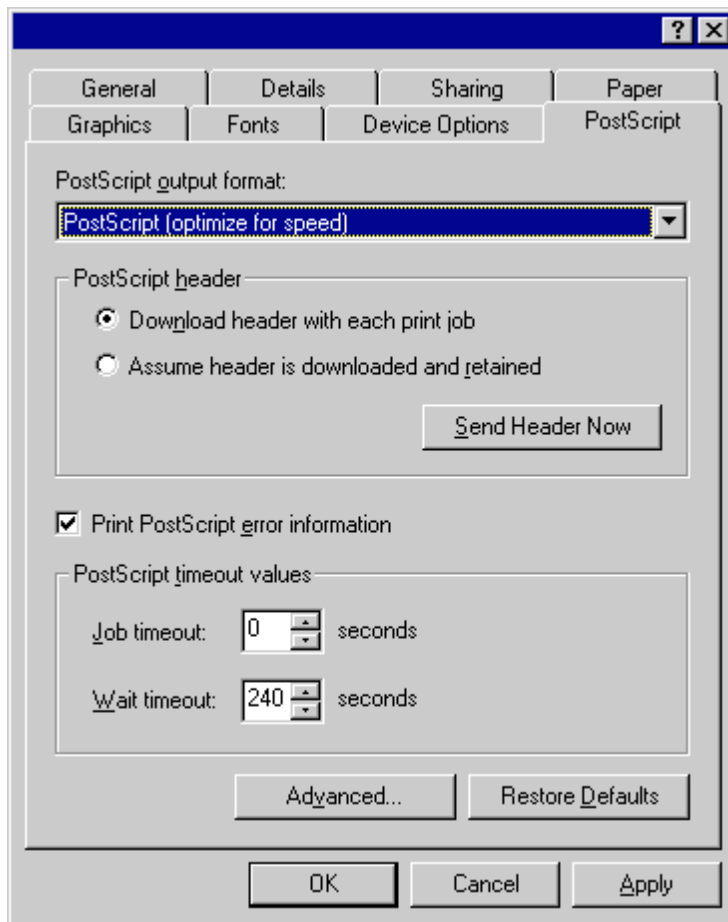
* In order to create a RAM disk, it is necessary to increase the memory capacity of your printer. After increasing memory, perform the setting here according to the "VM Option" setting below.

● VM Option

Perform this setting according to the amount of memory in your printer. If a mistake is made in this setting, there is a possibility that printing will not be accomplished properly.

3. Printer Driver for Windows 95/98

3-8 PostScript Tab (KPD2 Driver)



Allows you to make PostScript-related settings. Refer to On-Line Help for more detailed information.

4. Printer Driver for WindowsNT

The following procedure explains the functions of the Universal driver and the KPDL2 driver for those who use Windows NT4.0 as their operating system.

- * This Instruction Handbook uses illustrations from the message display of the 20 ppm copier for purposes of explanation, but the actual basic operation procedure is the same for 15 ppm copiers as well.
- * Depending upon version upgrades of the printer driver, the screenshots shown here may differ somewhat from that of the actual printer driver.
- * Depending upon the model of your copier, there may be functions that are not supported or that require optional equipment to be installed. Even if the settings for such functions are performed, they will not be effective.
- * Refer to the Instruction Manual for Windows or to On-Line Help for information regarding items that are not explained in this Instruction Handbook.
- * Two printer drivers have been included with this product: a standard printer driver and a Collator-compatible driver. Refer to "1. Procedure for Installing and Printing with a Printer Driver" on page 1-1 for more detailed information.
- * If you use the KPDL 2 driver, be sure to set the emulation mode in the printer to "KPDL" or "KPDL(AUTO)".

4-1 Opening the Properties Window

1

Start WindowsNT.

2

Click on [Start] on the task bar.

The Start menu will appear.

3

Use the mouse to point to [Settings]. A submenu will appear, so click on [Printers].

The [Printers] folder will open.

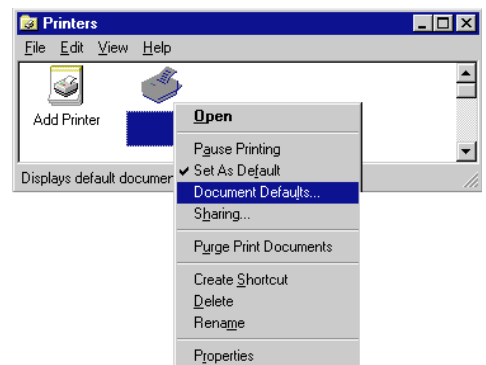
4

Use the right mouse button to click on the icon for this printer. A pop-up menu will be displayed.

Select [Document Defaults] from the menu.

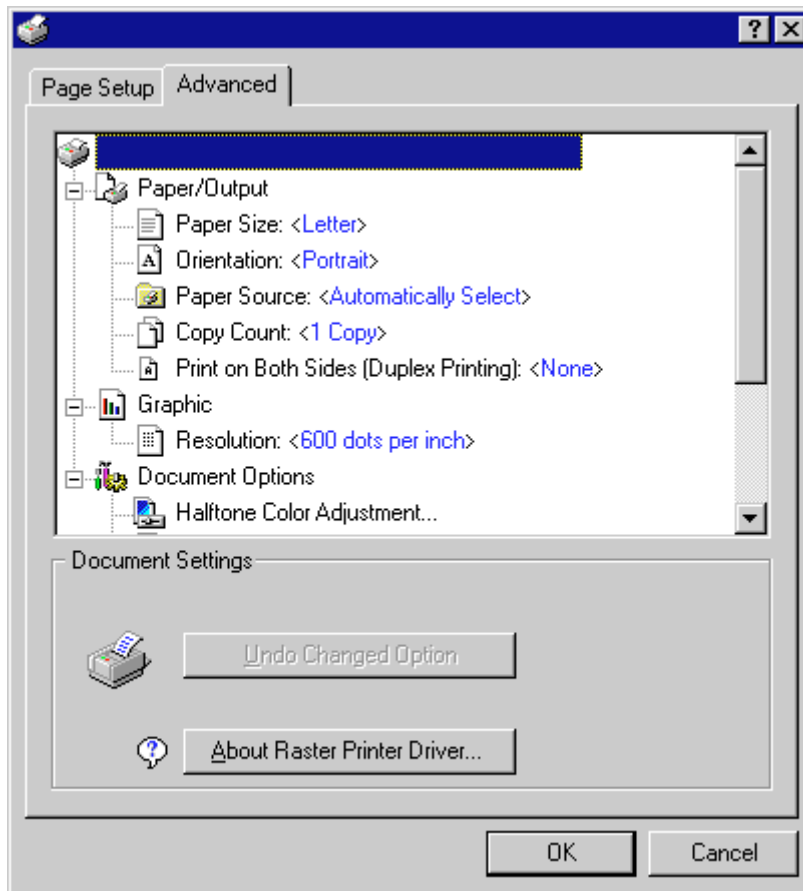
The Document Defaults window will open.

* When you are making settings for optional equipment, select [Properties] here and then click on the [Device Settings] Tab.



4. Printer Driver for WindowsNT

4-2 Paper/Output (Universal Driver)



■ Paper Size:

Select the size of standard-size paper sheet or envelope. Selection can be made in the "Change 'Paper Size' Setting" area. The following standard-size paper sheets and envelopes can be used with this printer:

Standard-size paper sheet	Letter (8 1/2" x 11"), Legal (8 1/2" x 14"), Ledger (11" x 17"), Statement (5 1/2" x 8 1/2"), A3, A4, A5, A6, Folio (210 x 330 mm), JIS B4, JIS B5, JIS B6
Envelope	COM-10, Monarch, DL, C5

■ Orientation:

Select the print orientation from the following: Selection can be made in the "Change 'Orientation' Setting" area. The factory default setting is "Portrait".

[Portrait] Prints lengthwise.

[Landscape] Prints widthwise.

■ Paper Source:

You can select the source of paper feed according to the desired tray. Selection is possible from among the following items. If you select "Automatically Select", the printer will automatically choose the tray that contains the most appropriate paper for the job. The factory default setting is "Automatically Select".

Tray	Automatically Select, Tray 1, Tray 2, Tray 3, Tray 4, Bypass Tray
------	---

* 20 ppm copier: Tray 3 and Tray 4 are available only when the Option Cassette is installed.

* 15 ppm copier: Tray 2, Tray 3 and Tray 4 are available only when the Option Cassette is installed.

■ Copy Count:

Set the number of copies to be made. The allowable range is from 1 to 999. Setting can be made in the "Change 'Copy Count' Setting" area. Click the arrow buttons (▲, ▼) or enter directly from the keyboard. The factory default setting is "1".

4. Printer Driver for WindowsNT

■ Print on Both Side (Duplex Printing):

Allows you to set the desired duplex mode. Setting can be made in the "Change 'Print on Both Sides 'Duplex Printing'" Setting area. The factory default setting is "None".

[None] Does not print on both sides.

[Short Side] Prints on both sides and binds along the shorter edge.

[Long Side] Prints on both sides and binds along the longer edge.

* 20 ppm copier: Available only when the optional Duplex Unit is installed.

* 15 ppm copier: Duplex printing is NOT available.

* Paper sizes and source of paper feed that are acceptable for duplex printing are as follows:

Paper sizes: Letter (8 1/2" x 11"), Legal (8 1/2" x 14"), Ledger (11" x 17"), Statement (5 1/2" x 8 1/2"), A3, A4, A5, Folio (210 mm x 330 mm), JIS B4 and JIS B5

Source of paper feed: Any tray EXCEPT the Bypass Tray

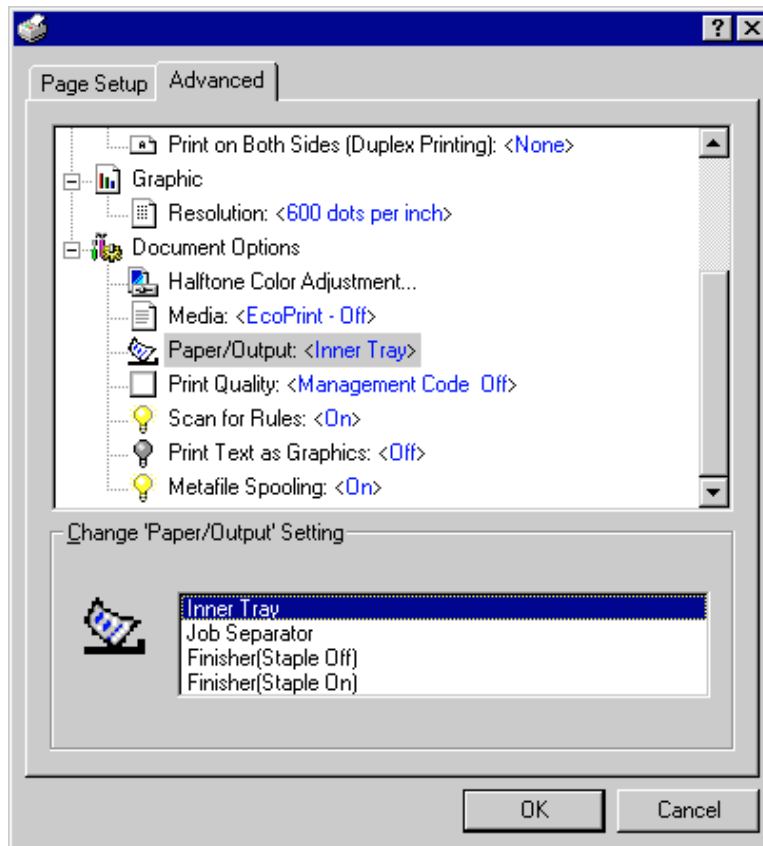
4-3 Graphic (Universal Driver)

■ Resolution:

Specify the desired print resolution. The resolution must be specified in the number of dots per inch (dpi). Select between "600 x 600 dots per inch" and "300 x 300 dots per inch". The factory default setting is "600 dots per inch".

4. Printer Driver for WindowsNT

4-4 Document Options (Universal Driver)



■ Media:

Saves on toner. Setting can be made in the "Change 'Media' Setting" area. The factory default setting is "Off".

■ Paper/Output:

Allows you to select the location of ejection and whether you want to staple the sets or not when the optional Job Separator or Finisher is installed. Selection can be made in the "Change 'Paper/Output' Setting" area.

[Inner Tray] Copies will be ejected onto the Inner tray.

[Job Separator] Copies will be ejected into the optional Job Separator.

[Finisher (Staple Off)] Copies will be ejected into the optional Finisher. (Only available in the 20 ppm copiers)

[Finisher (Staple On)] Copies will be stapled and ejected into the optional Finisher. (Only available in the 20 ppm copiers)

* Paper sizes are acceptable for use with the Job Separator are as follows:

Paper sizes: Letter (8 1/2" x 11"), Legal (8 1/2" x 14"), Ledger (11" x 17"), Statement (5 1/2" x 8 1/2"), A3, A4, A5, Folio (210 mm x 330 mm), JIS B4 and JIS B5

* Paper sizes and source of paper feed that are acceptable for use with the Finisher are as follows:

Paper sizes: Letter (8 1/2" x 11"), Legal (8 1/2" x 14"), Ledger (11" x 17"), A3, A4, Folio (210 mm x 330 mm), JIS B4 and JIS B5

Source of paper feed: Any tray EXCEPT the Bypass Tray

* Paper sizes and source of paper feed that are acceptable for stapling are as follows:

Paper sizes: Letter (8 1/2" x 11"), Legal (8 1/2" x 14"), Ledger (11" x 17"), A3, A4, JIS B4 and JIS B5

Source of paper feed: Any tray EXCEPT the Bypass Tray

Note

If you want to staple your printed sets, be sure to use a Collator driver. (Refer to "Collator driver" on page 1-1.)

■ Print Quality (Management Code)

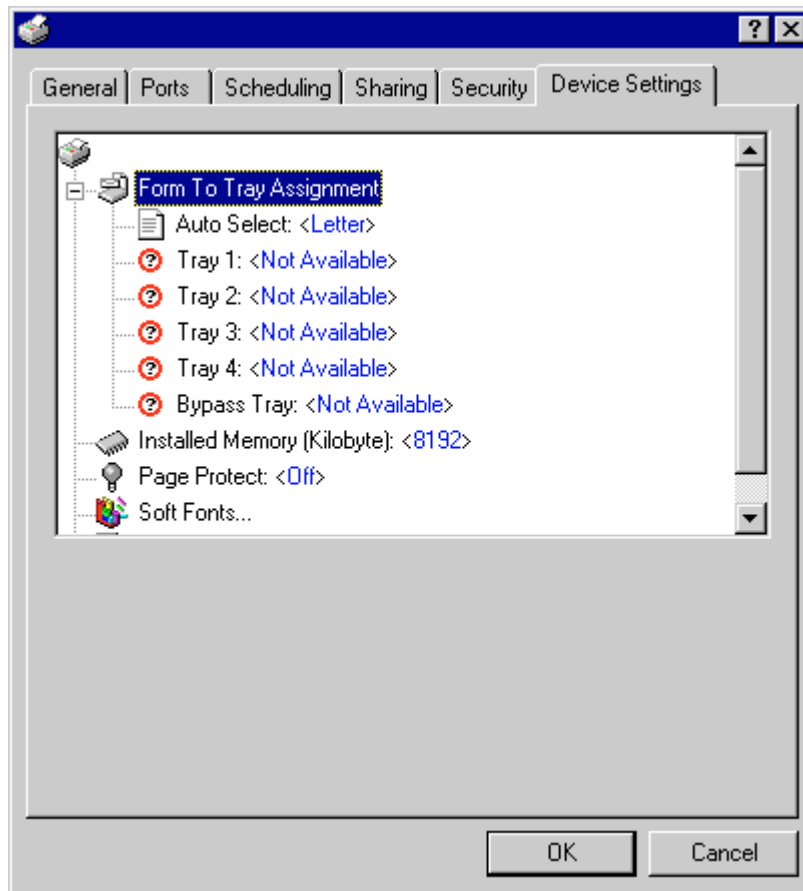
This setting is used when Copy Management is turned ON in the printer. If the "management code" selected in the "Change 'Print Quality' Setting" area does not match the one set on the printer, printing will not be performed. If "Management Code Off" is selected, the number of prints for each department will not be checked. The factory default setting is "Management Code Off".

* If Copy Management is turned ON and this setting does not match the setting made in the printer itself, it will not be possible to make test prints. Thus, when you install the printer driver, you will need to check the Copy Management settings and make a test print AFTER the installation procedure is complete.

* When Copy Management is turned ON, even if you send a print command with a DOS "COPY" command, printing will not be possible if you do not use a printer driver.

4. Printer Driver for WindowsNT

4-5 Device Settings Tab (Universal Driver)



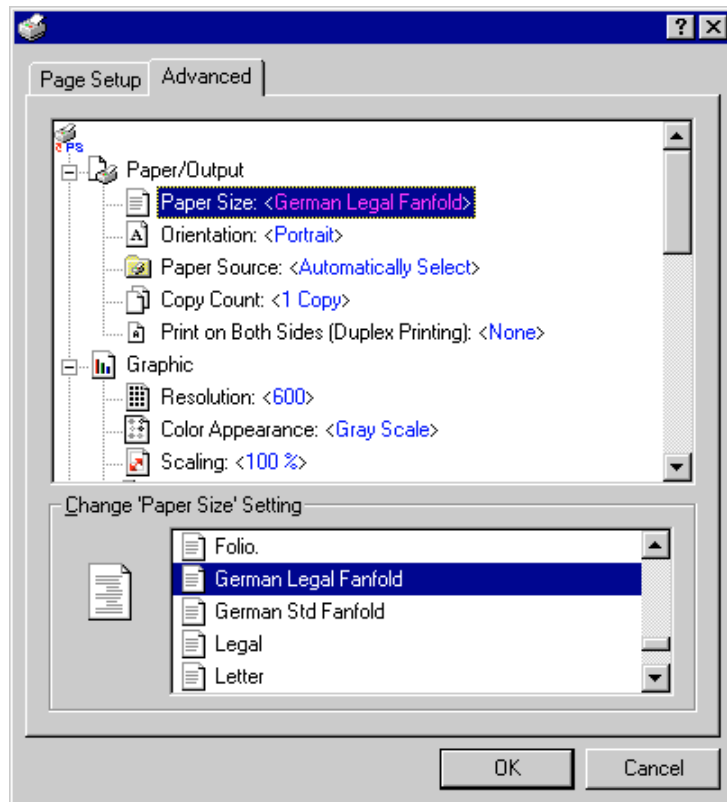
In order to view this window and make settings for optional equipment, select "Properties" in step 4 on page 4-1 and then click on the "Device Settings" Tab.

■ **Installed Memory (Kilobyte)**

Perform this setting according to the amount of memory in your printer. If a mistake is made in this setting, there is a possibility that printing will not be accomplished properly.

4. Printer Driver for WindowsNT

4-6 Paper/Output (KPD2 Driver)



■ Paper Size:

Select the size of standard-size paper sheet or envelope. Selection can be made in the "Change 'Paper Size' Setting" area. The following standard-size paper sheets and envelopes can be used with this printer:

Standard-size paper sheet	Letter (8 1/2" x 11"), Legal (8 1/2" x 14"), Tabloid (11" x 17"), Statement (5 1/2" x 8 1/2"), A3, A4, A5, A6, Folio (210 x 330 mm), JIS B4, JIS B5, JIS B6
Envelope	COM-10, Monarch, DL, C5

■ Orientation:

Select the print orientation from the following: Selection can be made in the "Change 'Orientation' Setting" area. The factory default setting is "Portrait".

[Portrait] Prints lengthwise.

[Landscape] Prints widthwise.

[Rotated] Prints the image upside-down in a "Landscape" (widthwise) orientation.

■ Paper Source:

You can select the source of paper feed according to the tray or the desired type of paper. Selection is possible from among the following items. If you select "Automatically Select", the printer will automatically select the tray that contains the most appropriate paper for the job. The factory default setting is "Automatically Select".

Paper type	Plain, Transparency, Labels, Recycled, Rough, Letterhead, Color, Envelope, Card Stock
Tray	Automatically Select, Tray 1, Tray 2, Tray 3, Tray 4, Bypass Tray

* It is necessary to perform the settings under "Page Policy" on page 4-10 BEFORE making settings here. If you want to select the source of paper feed according to the type of paper, select "Auto Size Select" there. If you want to select the source of paper feed according to the tray, make sure that "Cassette Base" is selected there.

In addition, if you select "Automatically Select" here, be sure that the "Page Policy" setting is set to "Auto Size Select" or there is a possibility that printing will be accomplished onto paper that is different than the expected.

* 20 ppm copier: Tray 3 and Tray 4 are available only when the Option Cassette is installed.

* 15 ppm copier: Tray 2, Tray 3 and Tray 4 are available only when the Option Cassette is installed.

* Selection according to the desired type of paper is NOT available in 15 ppm copiers.

4. Printer Driver for WindowsNT

■ Copy Count:

Set the number of copies to be made. The allowable range is from 1 to 999. Setting can be made in the "Change 'Copy Count' Setting" area. Click the arrow buttons (▲, ▼) or enter directly from the keyboard. The factory default setting is "1".

■ Print on Both side (Duplex Printing):

Allows you to set the desired duplex mode. Setting can be made in the "Change 'Print on Both Sides 'Duplex Printing'" Setting area. The factory default setting is "None".

[None] Does not print on both sides.

[Long Side] Prints on both sides and binds along the longer edge.

[Short Side] Prints on both sides and binds along the shorter edge.

* 20 ppm copier: Available only when the optional Duplex Unit is installed.

* 15 ppm copier: Duplex printing is NOT available.

* Paper sizes, types and source of paper feed that are acceptable for duplex printing are as follows:

Paper sizes: Letter (8 1/2" x 11"), Legal (8 1/2" x 14"), Tabloid (11" x 17"), Statement (5 1/2" x 8 1/2"), A3, A4, A5, Folio (210 mm x 330 mm), JIS B4 and JIS B5

Paper types: Plain, Recycled and Color

Source of paper feed: Any tray EXCEPT the Bypass Tray

4-7 Graphic (KPD2 Driver)

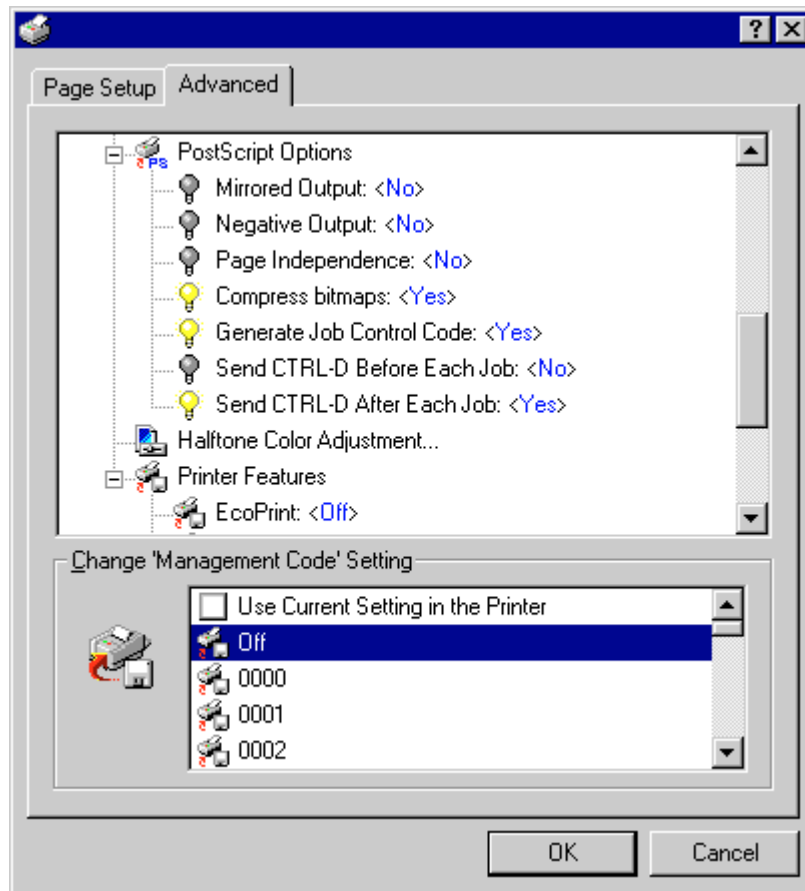
■ Resolution:

Specify the desired print resolution. The resolution must be specified in the number of dots per inch (dpi). Select between "600 x 600 dots per inch" and "300 x 300 dots per inch". The factory default setting is "600 dots per inch".

4. Printer Driver for WindowsNT

4-8 Document Options (KPD2 Driver)

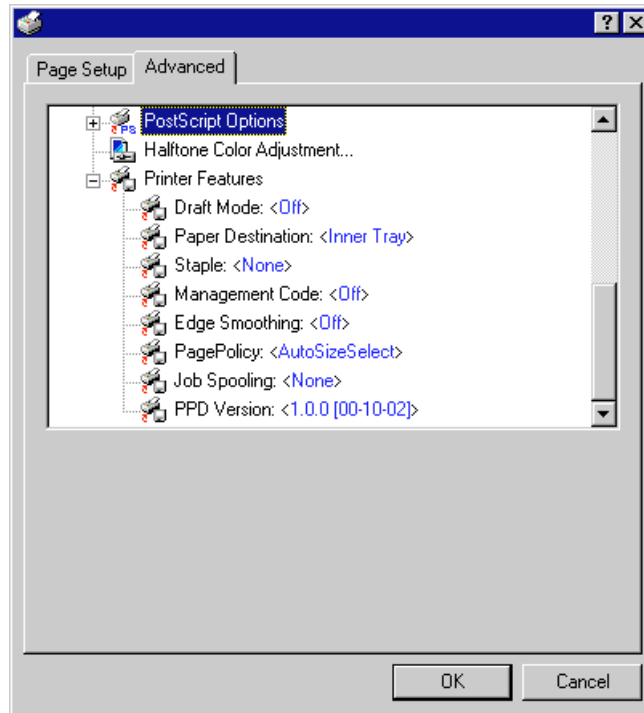
4-8-1 PostScript Options:



Allows you to make PostScript-related settings. Refer to On-Line Help for more detailed information.

4. Printer Driver for WindowsNT

4-8-2 Printer Features



■ Draft Mode:

Saves on toner. Setting can be made in the "Change 'EcoPrint' Setting" area. The factory default setting is "Off".

■ Paper Destination:

Allows you to select the location of ejection when the optional Job Separator or Finisher is installed. Select the desired function here and then change the setting in the field under "Change 'Paper Destination' Setting".

[Inner Tray] Copies will be ejected onto the Inner tray.

[Job Separator] Copies will be ejected into the optional Job Separator.

[Finisher] Copies will be ejected into the optional Finisher. (Only available with 20 ppm copiers.)

* In order to set the location of ejection for the Job Separator or Finisher, it is necessary to first perform the setting for that optional equipment under "Installable options" on page 4-11.

* Paper sizes and types that are acceptable for use with the Job Separator are as follows:

Paper sizes: Letter (8 1/2" x 11"), Legal (8 1/2" x 14"), Tabloid (11" x 17"), Statement (5 1/2" x 8 1/2"), A3, A4, A5, Folio (210 mm x 330 mm), JIS B4 and JIS B5

Paper types: Plain, Letterhead, Recycled and Color

* Paper sizes, types and source of paper feed that are acceptable for use with the Finisher are as follows:

Paper sizes: Letter (8 1/2" x 11"), Legal (8 1/2" x 14"), Tabloid (11" x 17"), A3, A4, Folio (210 mm x 330 mm), JIS B4 and JIS B5

Paper types: Plain, Letterhead, Recycled and Color

Source of paper feed: Any tray EXCEPT the Bypass Tray

4. Printer Driver for WindowsNT

■ Staple

It is possible to staple your copy sets if the optional Finisher is installed.

Select the desired function here and then change the setting in the field under "Change 'Paper Destination' Setting".

* Stapling is only available with 20 ppm copiers.

* The following settings are required before stapling is possible:

(1) "Installable Options" setting in the "Device Settings" Tab under "Properties" (Refer to step 4 on page 4-1 for information on accessing "Properties".)

Select "Finisher" as the "Output Device" setting and "RAM Disk" under "Optional Disk".

(2) "Printer Features" setting

Select "Finisher" as the "Paper Destination" setting and "Temporary" under "Job Spooling".

* Paper sizes, types and source of paper feed that are acceptable for stapling are as follows:

Paper sizes: Letter (8 1/2" x 11"), Legal (8 1/2" x 14"), Tabloid (11" x 17"), A3, A4, JIS B4 and JIS B5

Paper types: Plain, Letterhead, Recycled and Color

Source of paper feed: Any tray EXCEPT the Bypass Tray

■ Management Code:

This setting is used when Copy Management is turned ON in the printer. If the "management code" selected in the "Change 'Management Code' Setting" area does not match the one set on the printer, printing will not be performed. If "Off" is selected, the number of prints for each department will not be checked. The factory default setting is "Off".

* If Copy Management is turned ON and this setting does not match the setting made in the printer itself, it will not be possible to make test prints. Thus, when you install the printer driver, you will need to check the Copy Management settings and make a test print AFTER the installation procedure is complete.

* When Copy Management is turned ON, even if you send a print command with a DOS "COPY" command, printing will not be possible if you do not use a printer driver.

■ Edge Smoothing:

Turning this setting "On" allows the jaggies that appear around the edge of text and graphics to be evened out through the smoothing process.

■ PagePolicy:

Perform this setting in conjunction with the settings to be made under "Paper source" on page 4-6.

[Auto Size Select] Select this setting when you want to select the source of paper feed according to the type of paper (you are going to select "Automatically Select" under "Paper source").

[Cassette Base] Select this setting when you want to select the source of paper feed according to the tray under "Paper source".

* If you are going to select "Automatically Select" under "Paper source", be sure to select "Auto Size Select" here or there is a possibility that printing will be accomplished onto paper that is different than expected.

■ Job Spooling:

When you want to print out more than one set of the same documents, it is possible to have them sorted and ejected one set at a time.

[None] Does not sort.

[Sort] Sorts and prints in order of sets: Set 1, Set 2, Set 3, etc.

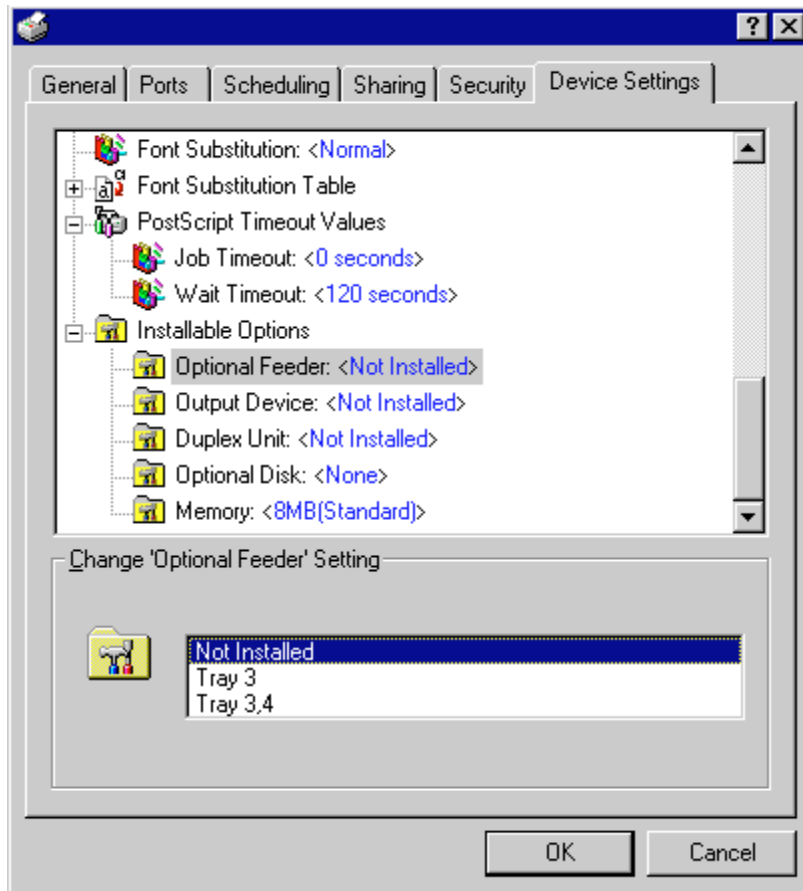
* It is necessary to create a RAM disk. (Refer to page 4-11.)

* If you selected any of the "Staple" settings above, it is necessary to select "Temporary" here.

4. Printer Driver for WindowsNT

4-9 Device Settings Tab (KPD2 Driver)

4-9-1 Installable Options



In order to view this window and make settings for optional equipment, select "Properties" in step 4 on page 4-1 and then click on the "Device Settings" Tab.

Perform the settings here whenever you add optional equipment. The functions of the optional equipment will only be available to the printer after you have completed the setting here. Select the desired optional equipment here and then change the setting in the field under "Change 'xxx' setting". The optional equipment available for selection are as follows.

■ **Optional Feeder**

Perform this setting according to the installed Option Cassette.

■ **Output Device**

Perform this setting when the optional Job Separator or Finisher (only available with 20 ppm copiers) are installed.

■ **Duplex Unit**

Perform this setting when the optional Duplex Unit (only available with 20 ppm copiers) is installed.

■ **Optional Disk**

Perform this setting when you want to create a RAM disk. Refer to "Chapter 1, 3-2 RAM Disk" on page 3-1 for more detailed information on creating a RAM disk.

* In order to create a RAM disk, it is necessary to increase the memory capacity of your printer. After increasing memory, perform the setting here according to the "Memory" setting below.

■ **Memory**

Perform this setting according to the amount of memory in your printer. If a mistake is made in this setting, there is a possibility that printing will not be accomplished properly.

5. Printer Driver for Windows2000

The following procedure explains the functions of the Universal driver and the KPDL2 driver for those who use Windows 2000 as their operating system.

- * This Instruction Handbook uses illustrations from the message display of the 20 ppm copier for purposes of explanation, but the actual basic operation procedure is the same for 15 ppm copiers as well.
- * Depending upon version upgrades of the printer driver, the screenshots shown here may differ somewhat from that of the actual printer driver.
- * Depending upon the model of your copier, there may be functions that are not supported or that require optional equipment to be installed. Even if the settings for such functions are performed, they will not be effective.
- * Refer to the Instruction Manual for Windows or to On-Line Help for information regarding items that are not explained in this Instruction Handbook.
- * If you use the KPDL 2 driver, be sure to set the emulation mode in the printer to "KPDL" or "KPDL(AUTO)".

5-1 Opening the Printing Preference Window

1

Start Windows2000.

2

Click on [Start] on the task bar.

The Start menu will appear.

3

Use the mouse to point to [Settings].

A submenu will appear, so click on [Printers].

The [Printers] folder will open.

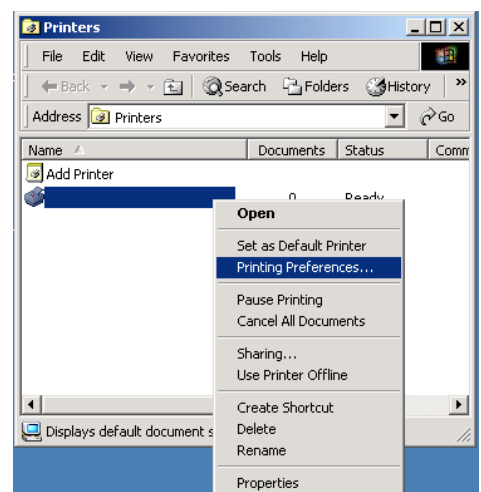
4

Use the right mouse button to click on the icon for this printer. A pop-up menu will be displayed.

Select [Printing Preferences] from the menu.

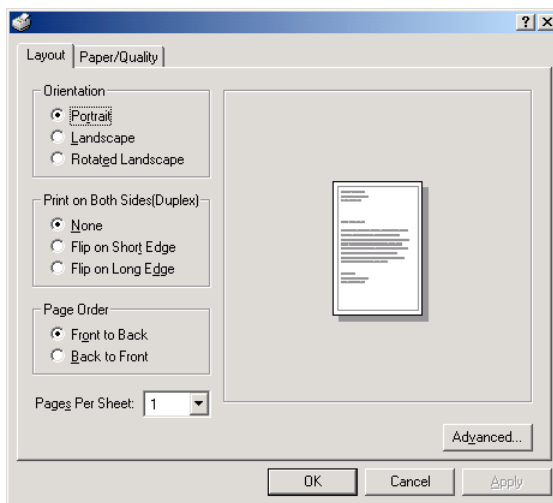
The Printing Preferences window will open.

* When you are making settings for optional equipment, select [Properties] here and then click on the [Device Settings] Tab.



5. Printer Driver for Windows2000

5-2 Layout Tab



■ Orientation

Select the print orientation from the following:

[Portrait] Prints lengthwise.

[Landscape] Prints widthwise.

[Rotated Landscape] Selecting this option prints upside down. (only available with KPDL2 Driver)

■ Print on Both Sides (Duplex)

<Only available in the 20 ppm copiers>

Allows you to set the desired duplex mode. The factory default setting is "None".

[None] Does not print on both sides.

[Flip on Long Edge] Prints on both sides and binds along the longer edge.

[Flip on Short Edge] Prints on both sides and binds along the shorter edge.

* 20 ppm copier: Available only when the optional Duplex Unit is installed.

* 15 ppm copier: Duplex printing is NOT available.

* Paper sizes, types and source of paper feed that are acceptable for duplex printing are as follows:

Paper sizes: Letter (8 1/2" x 11"), Legal (8 1/2" x 14"), Tabloid (11" x 17"), Statement (5 1/2" x 8 1/2"), A3, A4, A5, Folio (210 mm x 330 mm), JIS B4 and JIS B5

Paper types: Plain, Recycled and Color

Source of paper feed: Any tray EXCEPT the Bypass Tray

■ Page Order

The Printer has the ability to print from the 1st page or from the last page.

* It is necessary to enable "Advanced Printing Features" in order to perform this setting. Refer to "■ Advanced Printing Features" on page 5-5.

[Front to Back] Print from 1st page.

[Back to Front] Print from last page.

■ Page Per Sheet (N-up)

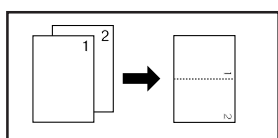
Prints multiple pages on a single paper (number of pages: 1,2,4,6,9,16,Booklet). (This is called combined print.) The pages are reduced automatically so that all the pages can be put on one page. The factory default setting is "1" (1 page on each paper).

The Booklet option is not available for use with the 15 ppm copier and the 20 ppm copier must be equipped with the optional Duplex Unit.

* It is necessary to enable "Advanced Printing Features" in order to perform this setting. Refer to "■ Advanced Printing Features" on page 5-5.

Example: With 2-Up printing

Prints reduced images of 2 full pages onto a single sheet of paper.

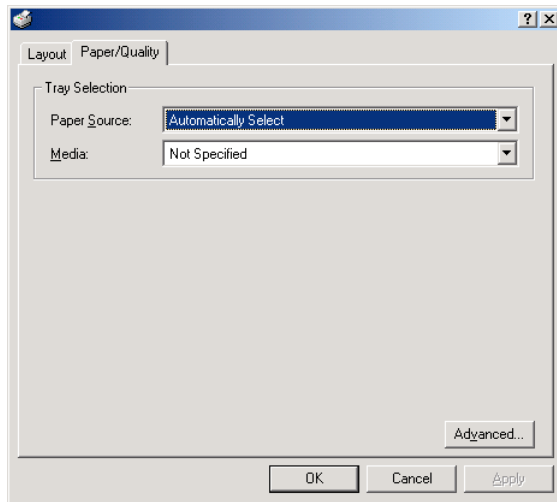


■ Advanced:

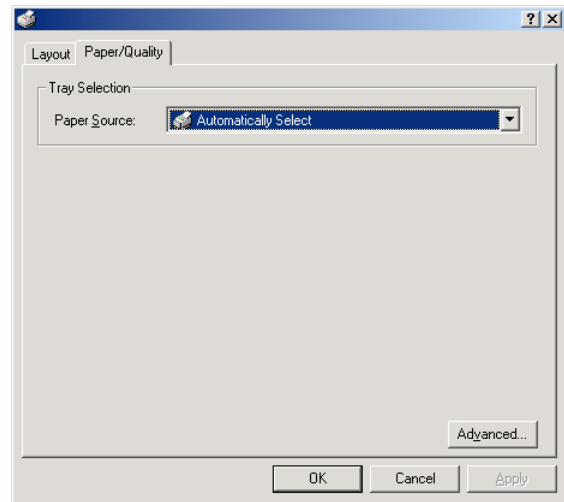
Click this button in order to open the Advanced Options dialog box. Refer to "5-4 Advanced Options" on page 5-4 for more detailed information.

5. Printer Driver for Windows2000

5-3 Paper/Quality Tab : (Tray Selection)



<Universal Driver>



<KPDL2 Driver>

<Universal Driver>

■ Paper Source:

You can select the source of paper feed according to the desired tray. Selection is possible from among the following items. If you select "Auto Source Selection", the printer will automatically choose the tray that contains the most appropriate paper for the job. The factory default setting is "Auto Source Selection".

Tray	Auto Source Selection, Tray 1, Tray 2, Tray 3, Tray 4, Bypass Tray
------	--

* 20 ppm copier: Tray 3 and Tray 4 are available only when the Option Cassette is installed.

* 15 ppm copier: Tray 2, Tray 3 and Tray 4 are available only when the Option Cassette is installed.

■ Media:

You can select the source of paper feed according to the desired type of paper. Selection is possible from among the following items. If you do not want to designate a specific type of paper, select "Not Specified". The factory default setting is "Not Specified".

Paper type	Not Specified, Plain, Transparency, Labels, Recycled, Rough, Letterhead, Color, Envelope, Card Stock
------------	--

* Selection according to the desired type of paper is NOT available in 15 ppm copiers.

■ Advanced:

Click this button in order to open the Advanced Options dialog box. Refer to "5-4 Advanced Options" on page 5-4 for more detailed information.

<KPDL2 Driver>

■ Paper Source:

You can select the source of paper feed according to the tray or the desired type of paper. Selection is possible from among the following items. If you select "Automatically Select", the printer will automatically select the tray that contains the most appropriate paper for the job. The factory default setting is "Automatically Select".

Paper type	Plain, Transparency, Labels, Recycled, Rough, Letterhead, Color, Envelope, Card Stock
Tray	Automatically Select, Tray 1, Tray 2, Tray 3, Tray 4, Bypass Tray

* It is necessary to perform the settings under "Page Policy" on page 5-7 BEFORE making settings here. If you want to select the source of paper feed according to the type of paper, select "Auto Size Select" there. If you want to select the source of paper feed according to the tray, make sure that "Cassette Base" is selected there.

In addition, if you select "Automatically Select" here, be sure that the "Page Policy" setting is set to "Auto Size Select" or there is a possibility that printing will be accomplished onto paper that is difference the expected.

* 20 ppm copier: Tray 3 and Tray 4 are available only when the Option Cassette is installed.

* 15 ppm copier: Tray 2, Tray 3 and Tray 4 are available only when the Option Cassette is installed.

* Selection according to the desired type of paper is NOT available in 15 ppm copiers.

■ Advanced:

Click this button in order to open the Advanced Options dialog box. Refer to "5-4 Advanced Options" on page 5-4 for more detailed information.

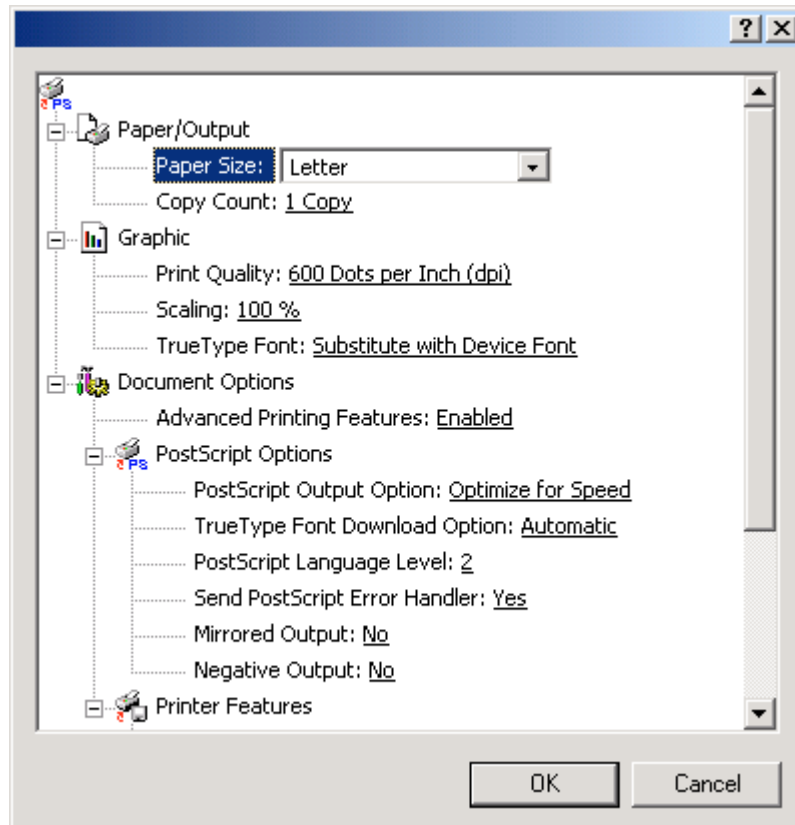
5. Printer Driver for Windows2000

5-4 Advanced Options

The following explains the Advanced Options dialog box.

* The explanations here are focused mostly on the special features of this product. Refer to On-Line Help for information regarding items that are not explained in this Instruction Handbook.

5-4-1 Paper/Output



■ Paper Size:

Select the size of standard-size paper sheet or envelope. Selection can be made in the drop-down list. The following standard-size paper sheets and envelopes can be used with this printer:

Standard-size paper sheet	Letter (8 1/2" × 11"), Legal (8 1/2" × 14"), Ledger (11" × 17"), Statement (5 1/2" × 8 1/2"), A3, A4, A5, A6, Folio (210 × 330 mm), JIS B4, JIS B5, JIS B6
Envelope	COM-10, Monarch, DL, C5

■ Copy Count:

Set the number of copies to be made. The allowable range is from 1 to 999.

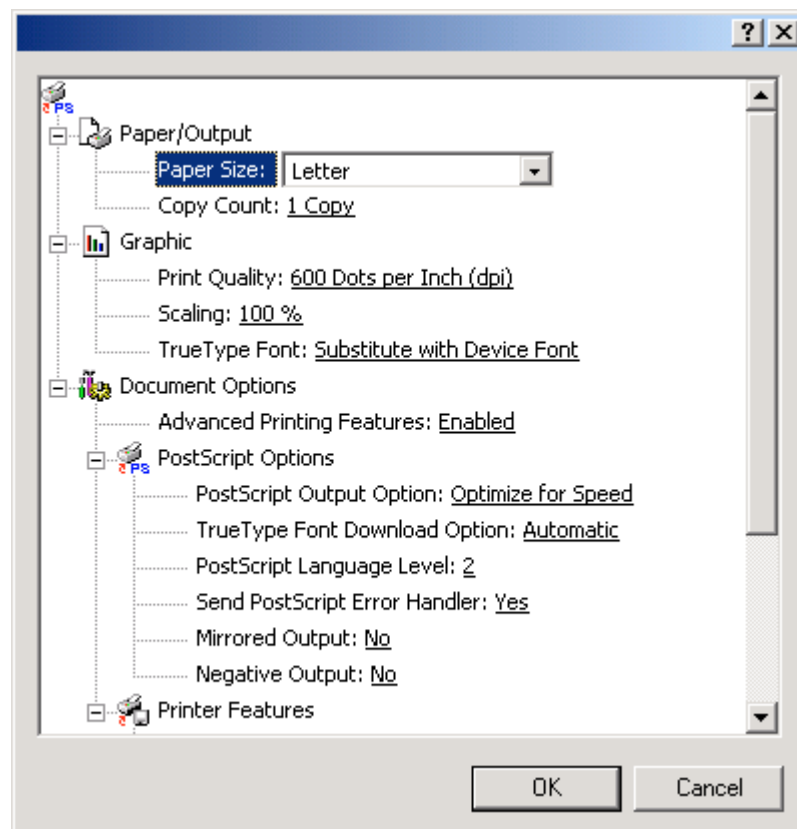
5-4-2 Graphics

■ Print Quality:

Specifies the printing resolution (number of dots per inch) to be used when printing. Select between "600 x 600 dots per inch" and "300 x 300 dots per inch". The factory default setting is "600 dots per inch".

5. Printer Driver for Windows2000

5-4-3 Document Options

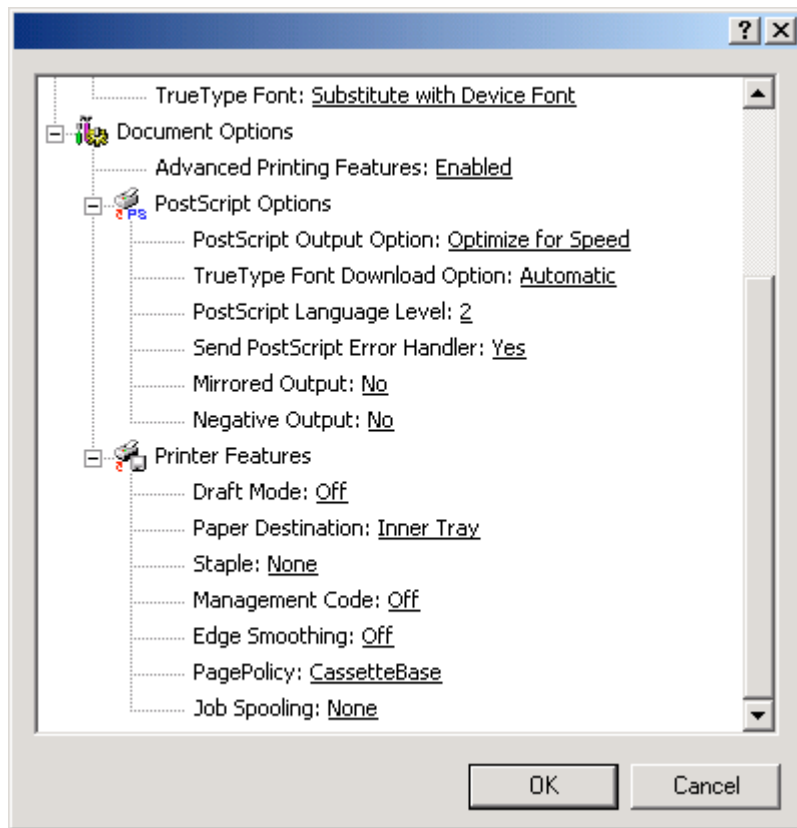


■ **Advanced Printing Features:**

Be sure to select "Enable" for this setting if you want to use the "Pages Per Sheet" (N-Up) function or the "Back to Front" option under the "Page Order" setting.

5. Printer Driver for Windows2000

5-4-4 Printer Features



■ Draft Mode:

Saves on toner. The factory default setting is "Off".

■ Paper Destination:

Allows you to select the location of ejection when the optional Job Separator or Finisher is installed.

[Inner Tray] Copies will be ejected onto the Inner tray.

[Job Separator] Copies will be ejected into the optional Job Separator.

[Finisher] Copies will be ejected into the optional Finisher. (Only available with 20 ppm copiers.)

* In order to set the location of ejection for the Job Separator or Finisher, it is necessary to first perform the setting for that optional equipment under "Installable options" on page 5-9.

* Paper sizes and types that are acceptable for use with the Job Separator are as follows:

Paper sizes: Letter (8 1/2" x 11"), Legal (8 1/2" x 14"), Tabloid (11" x 17"), Statement (5 1/2" x 8 1/2"), A3, A4, A5, Folio (210 mm x 330 mm), JIS B4 and JIS B5

Paper types: Plain, Letterhead, Recycled and Color

* Paper sizes, types and source of paper feed that are acceptable for use with the Finisher are as follows:

Paper sizes: Letter (8 1/2" x 11"), Legal (8 1/2" x 14"), Tabloid (11" x 17"), A3, A4, Folio (210 mm x 330 mm), JIS B4 and JIS B5

Paper types: Plain, Letterhead, Recycled and Color

Source of paper feed: Any tray EXCEPT the Bypass Tray

5. Printer Driver for Windows2000

■ Staple:

It is possible to staple your copy sets if the optional Finisher is installed.

* Stapling is only available with 20 ppm copiers.

* The following settings are required before stapling is possible:

(1) "Installable Options" setting in the "Device settings" Tab under "Properties" (Refer to step 4 on page 5-1 for information on accessing "Properties".)

Select "Finisher" as the "Output Device" setting and "RAM Disk" under "Optional Disk".

(2) "Printer Features" setting

Select "Finisher" as the "Paper Destination" setting and "Temporary" under "Job Spooling".

* Paper sizes, types and source of paper feed that are acceptable for stapling are as follows:

Paper sizes: Letter (8 1/2" x 11"), Legal (8 1/2" x 14"), Tabloid (11" x 17"), A3, A4, JIS B4 and JIS B5

Paper types: Plain, Letterhead, Recycled and Color

Source of paper feed: Any tray EXCEPT the Bypass Tray

■ Management Code:

This setting is used when Copy Management is turned ON in the printer. If the Management code that you selected from the dropdown list here and that selected in the printer itself do not match, printing will not be possible. The factory default setting is "Off".

* If Copy Management is turned ON and this setting does not match the setting made in the printer itself, it will not be possible to make test prints. Thus, when you install the printer driver, you will need to check the Copy Management settings and make a test print AFTER the installation procedure is complete.

* When Copy Management is turned ON, even if you send a print command with a DOS "COPY" command, printing will not be possible if you do not use a printer driver.

■ Edge Smoothing:

Turning this setting "On" allows the jaggies that appear around the edge of text and graphics to be evened out through the smoothing process.

■ PagePolicy: (only available with KPDL2 Driver)

Perform this setting in conjunction with the settings to be made under "Tray Selection" on page 5-3.

[Auto Size Select] Select this setting when you want to select the source of paper feed according to the type of paper (you are going to select "Automatically Select" under "Tray Selection").

[Cassette Base] Select this setting when you want to select the source of paper feed according to the tray under "Tray Selection".

* If you are going to select "Automatically Select" under "Tray Selection", be sure to select "Auto Size Select" here or there is a possibility that printing will be accomplished onto paper that is difference the expected.

■ Job Spooling:

When you want to print out more than one set of the same documents, it is possible to have them sorted and ejected one set at a time.

[None] Does not sort.

[Temporary (Sort)] Sorts and prints in order of sets: Set 1, Set 2, Set 3, etc.

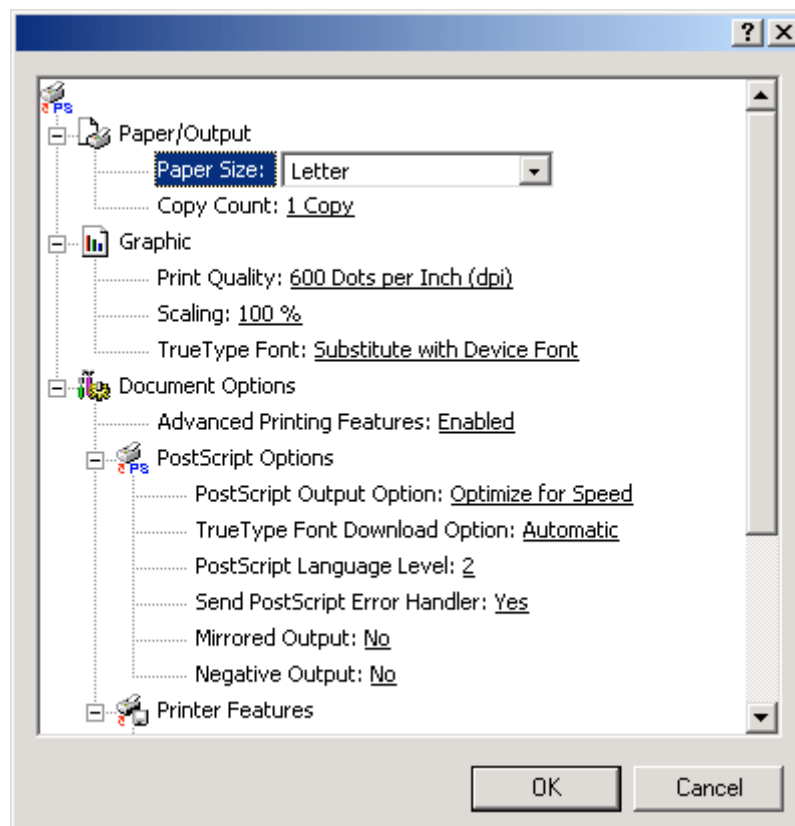
* If you are using a KPDL2 Driver, it is necessary to create a RAM disk. (Refer to page 5-9.)

* If you are using a Universal driver, it is necessary to increase the memory capacity of your printer and then change the "Memory" setting to more than 24 MB. (Refer to page 5-9.)

* If you selected any of the "Staple" settings above, it is necessary to select "Temporary (Sort)" here.

5. Printer Driver for Windows2000

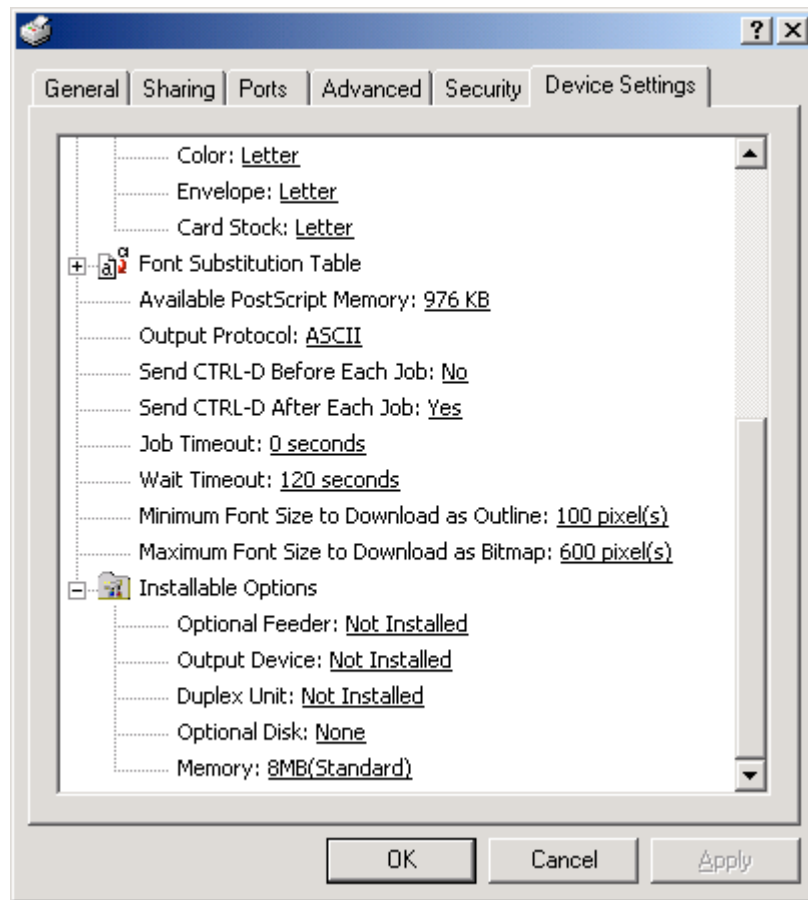
5-4-5 PostScript Options:



This option can only be used with a KPD2 Driver.
Allows you to make PostScript-related settings. Refer to On-Line Help for more detailed information.

5. Printer Driver for Windows2000

5-5 Device Settings Tab



In order to view this window and make settings for optional equipment, select "Properties" in step 4 on page 5-1 and then click on the "Device Settings" Tab.

Perform the settings here whenever you add optional equipment. The functions of the optional equipment will only be available to the printer after you have completed the setting here. The optional equipment available for selection are as follows.

■ **Optional Feeder**

Perform this setting according to the installed Option Cassette.

■ **Output Device**

Perform this setting when the optional Job Separator or Finisher (only available with 20 ppm copiers) are installed.

■ **Duplex Unit**

Perform this setting when the optional Duplex Unit (only available with 20 ppm copiers) is installed.

■ **Optional Disk (only available with KPDL2 Driver)**

Perform this setting when you want to create a RAM disk. Refer to "Chapter 1, 3-2 RAM Disk" on page 3-1 for more detailed information on creating a RAM disk.

* In order to create a RAM disk, it is necessary to increase the memory capacity of your printer. After increasing memory, perform the setting here according to the "Memory" setting below.

■ **Memory**

Perform this setting according to the amount of memory in your printer. If a mistake is made in this setting, there is a possibility that printing will not be accomplished properly.

6. Printer Driver for Macintosh

When using unit as a network printer, it is possible to print PostScript files from a Macintosh Computer. This section contains explanations regarding the procedure to install the Macintosh PPD files and select this printer, as well as explanation about the computer environment required to run the installed files.

Attention (Macintosh)

*When using the Printer driver, change the emulation setting KPDL or KPDL (AUTO).

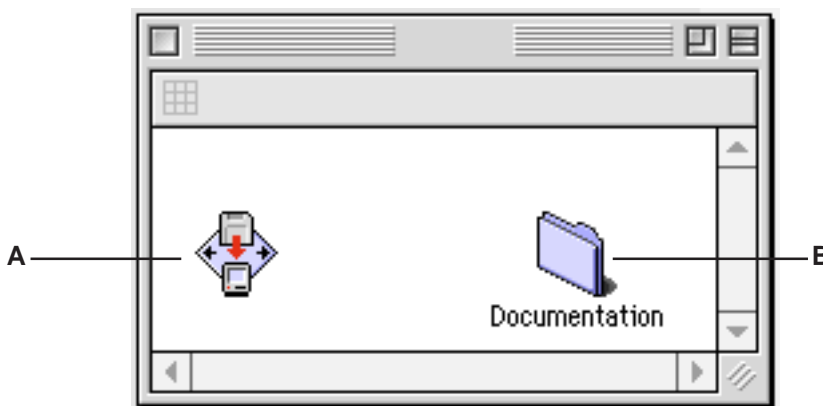
6-1 Required computer environment

- *OS: system 7.61 later
- *CPU: Minimum Power PC
- *RAM: Minimum 24MB
- *Free hard disk space: Minimum 10MB
- *CD-ROM drive: 1 drive

6-2 Installing the PPD files

This section explains the screen that appears when the CD-ROM supplied with the Printing System (K) is inserted into the CD-ROM drive.

*All the screens to use for explanation are samples, and a screen may be different by a version of utilized software to some extent.



A: [Install Drivers]

Click to start installation of the printer driver. Follow the instructions displayed on the screen to install the printer driver.

B: [Documentation]

Click to display the manual (PDF file) supplied with the printer driver. To open this PDF manual, Adobe Acrobat Reader (developed to view PDF files) is required, so make sure that Adobe Acrobat Reader is installed before opening the manual.

[Install Acrobat Reader] Installs Adobe Acrobat Reader.

[Printer Manuals] Displays the manuals (PDF) of the printer and printer driver. They explain the installation procedure of the printer driver and operation procedure of the printer.

[Readme] This file contains information which is not explained in the manuals. Please read this file before using the printer driver.

1

Start up your Macintosh computer.

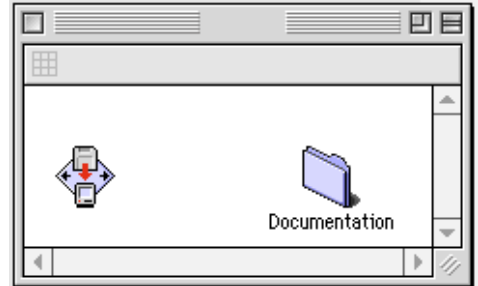
Insert the CD-ROM disk that is included with this product into a CD-ROM drive.

*If there is starting other program, please be finished.

* Screens are things of Mac OS 8.1.

6. Printer Driver for Macintosh

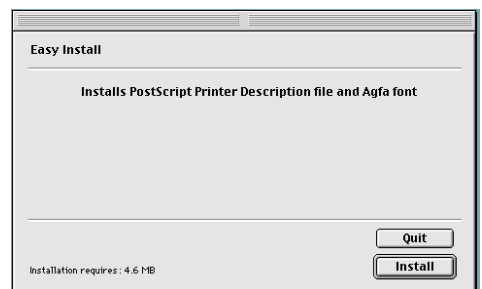
- 2** Double-Click on the icon for the CD-ROM disk.
“A copy machine product name of use” dialog box will appear.



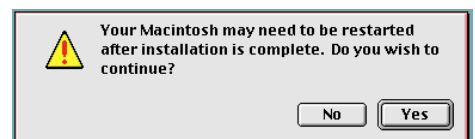
- 3** Double-Click on “the copy machine product name of use” Installer icon.
The window shown on the right will appear. Click on “Continue”.



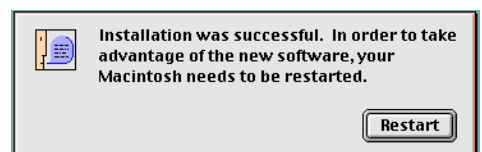
- 4** A dialog box will appear.
Click on [Install].



- 5** A dialog box will appear.
Click on [Yes].



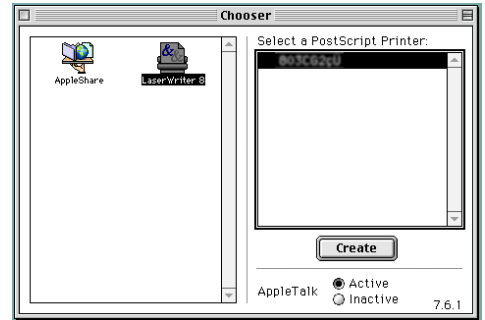
- 6** Installation was finished.
Click on [Restart], and start again.



6. Printer Driver for Macintosh

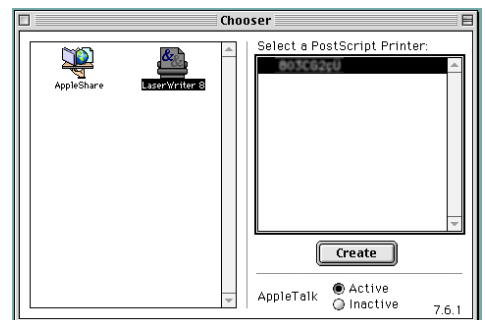
- 7** Access the Apple Menu at the far left of the Menu of Bar and select Chooser. The Chooser will appear.

Click once on the LaserWriter 8 icon.

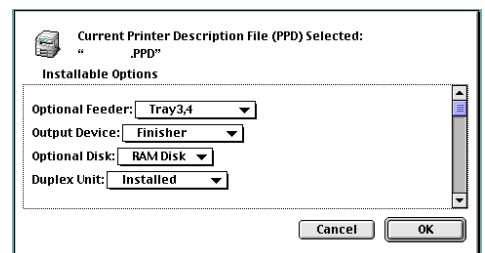


- 8** Select the name of this printer in the [Select a PostScript Printer] list and then click on the [Create] button.

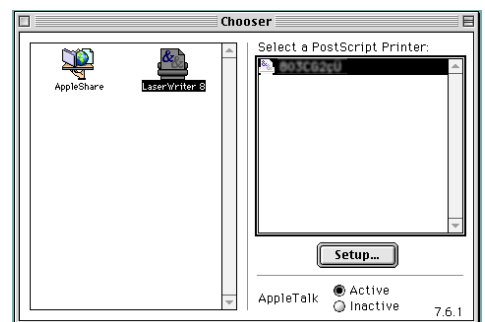
* The name of this printer can be verified by printing out a Status Page from the printer's operation panel.



- 9** A dialog box for selecting the appropriate options will appear. Select the option that are currently installed in or on your printer.



- 10** Once you're finished with the settings, click on [OK], the chooser will be displayed again.



- 11** Make sure that the name of this printer is selected (highlighted) in the [Select a PostScript Printer] list and close the Chooser. Once installation is complete, a "Readme" file will appear on the desktop. Be sure to read this file as it contains important information in regard to this product.

6. Printer Driver for Macintosh

6-3 General Dialog Box

*The actual layout of each dialog box and the available option and settings may differ somewhat depending upon the application and version of LaserWriter that you are using.

- **Printer:**
Selects the desktop printer to be used for printing your document.
- **Copies:**
Type the desired number of prints to be made (or the number of files to be saved to disk) directly into this field. Select a number between 1 - 999.
- **Pages:**
To print all of the pages in a file, select the All radio button. To print only certain pages, type in from what page (in the From field) to what page (in the To field) you want to print.
- **Paper Source:**
You can select the source of paper feed according to the tray or the desired type of paper. Selection is possible from among the following items. If you select "Auto Select", the printer will automatically select the tray that contains the most appropriate paper for the job. The factory default setting is "Auto Select".

Paper type	Plain, Transparency, Labels, Recycled, Rough, Letterhead, Color, Envelope, Card Stock
Tray	Auto Select, Tray 1, Tray 2, Tray 3, Tray 4, Bypass Tray

* It is necessary to perform the settings under "Page Policy" on page 6-6 BEFORE making settings here. If you want to select the source of paper feed according to the type of paper, select "Auto Size Select" there. If you want to select the source of paper feed according to the tray, make sure that "Cassette Base" is selected there. In addition, if you select "Auto Select" here, be sure that the "Page Policy" setting is set to "Auto Size Select" or there is a possibility that printing will be accomplished onto paper that is different than expected.

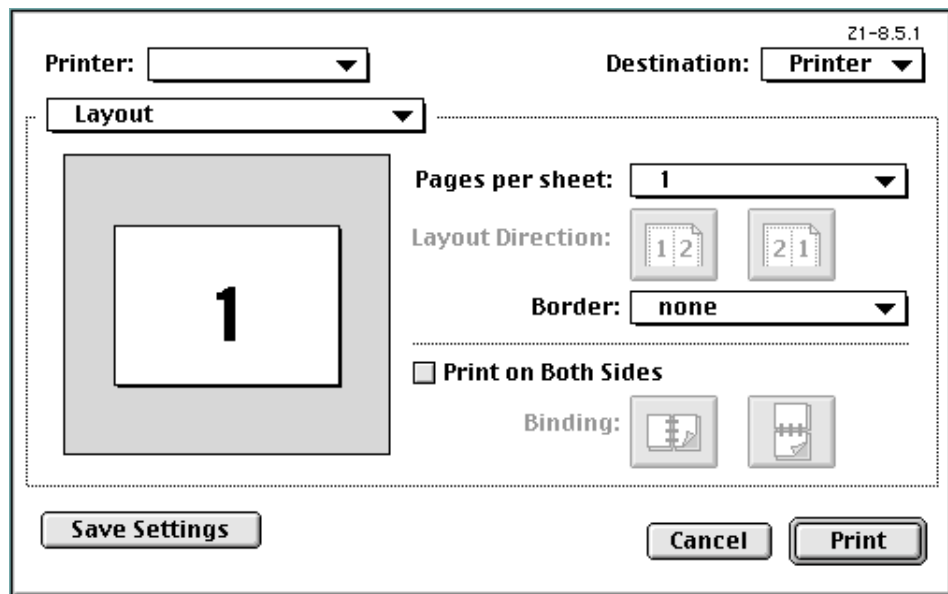
* 20 ppm copier: Tray 3 and Tray 4 are available only when the Option Cassette is installed.

* 15 ppm copier: Tray 2, Tray 3 and Tray 4 are available only when the Option Cassette is installed.

* Selection according to the desired type of paper is NOT available in 15 ppm copiers.

6. Printer Driver for Macintosh

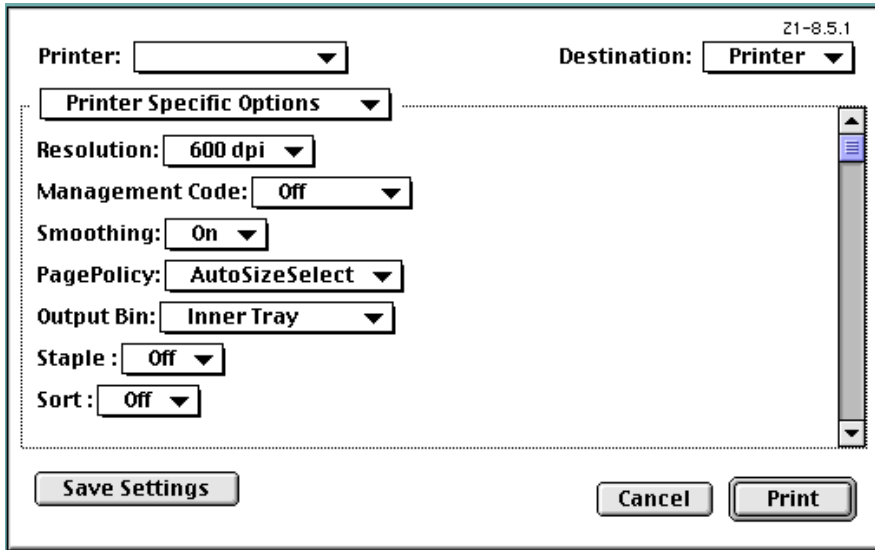
6-4 Layout Dialog Box



- **Pages per sheet:**
Sets the number of pages to be printed on each sheet of paper.
 - **Layout Direction:**
A button of either is clicked, and a layout direction is decided. If right button is selected, the pages are laid out from right to left.
 - **Border:**
Sets the type of line to appear around the page.
 - **Print on Both sides**
When this checkbox is selected, the printer will print on both sides of the paper.
[Binding]
Enable selection of the desired the binding orientation. If left button is selected, the binding orientation is along the side of the paper.
- * 20 ppm copier: Available only when the optional Duplex Unit is installed.
* 15 ppm copier: Duplex printing is NOT available.
* Paper sizes, types and source of paper feed that are acceptable for duplex printing are as follows:
Paper sizes: Letter (8 1/2" x 11"), Legal (8 1/2" x 14"), Ledger (11" x 17"), Statement (5 1/2" x 8 1/2"), A3, A4, A5, Folio (210 mm x 330 mm), JIS B4 and JIS B5
Paper types: Plain, Recycled and Color
Source of paper feed: Any tray EXCEPT the Bypass Tray

6. Printer Driver for Macintosh

6-5 Printer Specific Options



- **Resolution:**
Specifies the printing resolution (number of dots per inch) to be used when printing. Select between "600 dpi" and "300 dpi". The factory default setting is "600 dpi".
- **Management Code:**
This setting is used when Copy Management is turned ON in the printer. If the Management code that you selected from the dropdown list here and that selected in the printer itself do not match, printing will not be possible.
- **Smoothing:**
Turning this setting "On" allows the jaggies that appear around the edge of text and graphics to be evened out through the smoothing process.
- **PagePolicy:**
Perform this setting in conjunction with the settings to be made under "Paper source" on page 6-4.

[Auto Size Select] Select this setting when you want to select the source of paper feed according to the type of paper (you are going to select "Auto Select" under "Paper source").

[Cassette Base] Select this setting when you want to select the source of paper feed according to the tray under "Paper source".

* If you are going to select "Auto Select" under "Paper source", be sure to select "Auto Size Select" here or there is a possibility that printing will be accomplished onto paper that is difference the expected.
- **Output Bin:**
Specifies the location of ejection. Depending upon which option you have installed, you can select between the Job Separator and the Finisher (only available in the 20 ppm copier).

[Inner Tray] Copies will be ejected onto the Inner tray.

[Job Separator] Copies will be ejected into the optional Job Separator.

[Finisher] Copies will be ejected into the optional Finisher. (Only available with 20 ppm copiers.)

* In order to set the location of ejection for the Job Separator or Finisher, it is necessary to first perform the setting for that optional equipment under "Installable options" in step 9 on page 6-3.
* Paper sizes and types that are acceptable for use with the Job Separator are as follows:
Paper sizes: Letter (8 1/2" x 11"), Legal (8 1/2" x 14"), Ledger (11" x 17"), Statement (5 1/2" x 8 1/2"), A3, A4, A5, Folio (210 mm x 330 mm), JIS B4 and JIS B5

Paper types: Plain, Letterhead, Recycled and Color
* Paper sizes, types and source of paper feed that are acceptable for use with the Finisher are as follows:
Paper sizes: Letter (8 1/2" x 11"), Legal (8 1/2" x 14"), Ledger (11" x 17"), A3, A4, Folio (210 mm x 330 mm), JIS B4 and JIS B5

Paper types: Plain, Letterhead, Recycled and Color

Source of paper feed: Any tray EXCEPT the Bypass Tray

6. Printer Driver for Macintosh

■ Staple:

It is possible to staple your copy sets if the optional Finisher is installed.

* Stapling is only available with 20 ppm copiers.

* The following settings are required before stapling is possible:

(1) Change the "Installable Options" setting in step 9 on page 6-3 to the following.

Select "Finisher" as the "Output Device" setting and "RAM Disk" under "Optional Disk".

(2) "Printer Specific Options" setting on page 6-6.

Select "Finisher" as the "Output Bin" setting and "On" under "Sort".

* Paper sizes, types and source of paper feed that are acceptable for stapling are as follows:

Paper sizes: Letter (8 1/2" x 11"), Legal (8 1/2" x 14"), Tabloid (11" x 17"), A3, A4, JIS B4 and JIS B5

Paper types: Plain, Letterhead, Recycled and Color

Source of paper feed: Any tray EXCEPT the Bypass Tray

■ Sort:

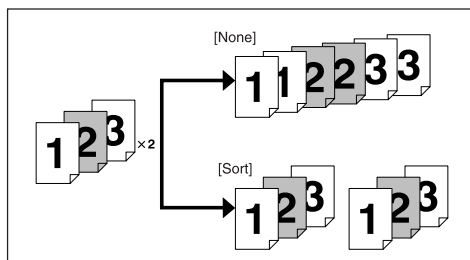
Allows you to select whether to sort the copies in the case of multiple copy.

[Off] Does not sort.

[On] Prints in the order of 1st, 2nd, 3rd copies and so on.

* It is necessary to create a RAM disk. (Refer to step 9 on page 6-3.)

* If you selected any of the "Staple" settings above, it is necessary to select "On" here.



■ 180 Rotate:

Selecting this option prints upside down.

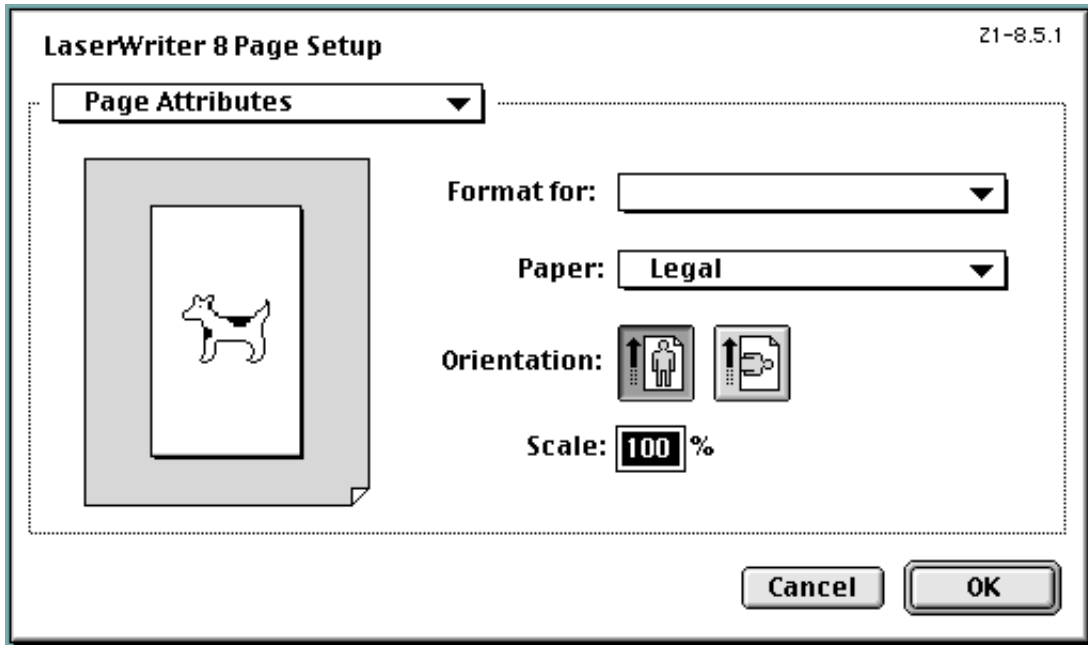
6. Printer Driver for Macintosh

6-6 Page Setup dialog Dialog Box

Settings for paper size, page layout, magnification ratio and print direction (orientation) are performed in the **Page Setup** dialog box. To display the **Page Setup** dialog box, select **Page Setup...** in the **File** menu of the corresponding application.

* The actual layout of each dialog box and the available options and settings may differ somewhat depending upon the application and the version of **LaserWriter** that you are using.

* For the user using **Mac OS 7.6.1**, we strongly recommend that you update the **LaserWriter8.3.2** to **Laser Writer 8.5.1**.

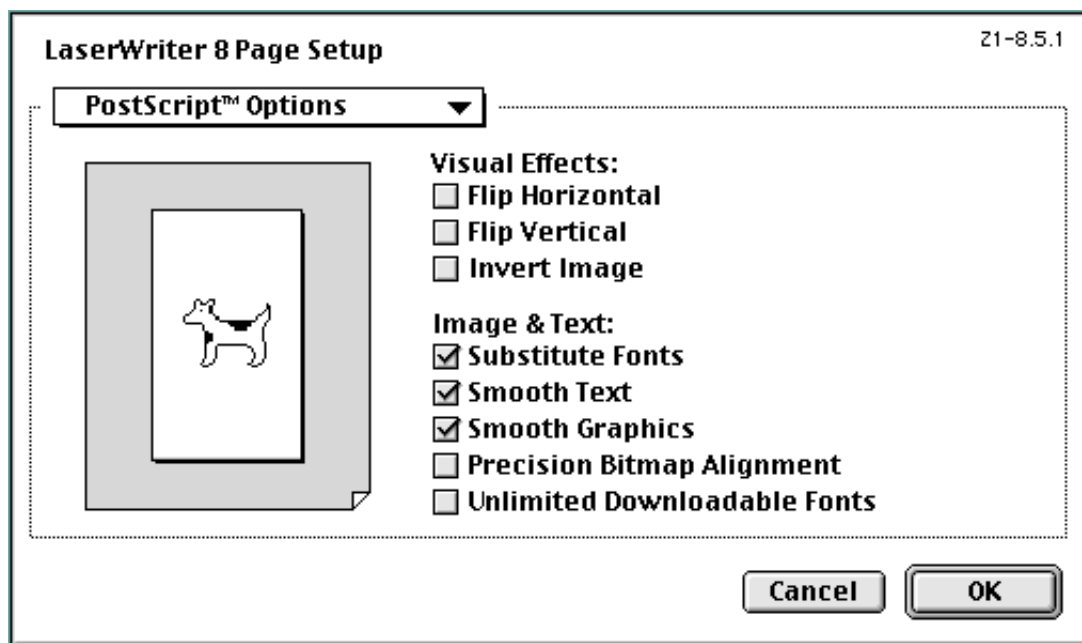


- **Format for:**
Use this pop-up menu to select the Printer that you want to use.
- **Paper:**
Select in this pop-up list the desired paper size. Choose from among Letter, Legal, Ledger, Folio, Statement, A3, A4, Custom, B4(JIS), A5, A6, B5(JIS), B6(JIS) and Envelopes (Monarch, Com 10, DL, C5)
* ALWAYS use the multi-bypass to feed the following sizes: A6, B6(JIS), Envelopes (Monarch, Com 10, DL, C5)
- **Orientation:**
Enable selection of the desired print direction.
- **Scale:**
Type the desired magnification ratio directly into this field. Select a ratio between 25% - 400%.

6. Printer Driver for Macintosh

6-7 PostScript Dialog Box

The actual layout of each dialog box and the available options and settings may differ somewhat depending upon the application and the version of LaserWriter that you are using.



■ **Visual Effects:**

Visual effects such as horizontal and vertical flip and image inverting can be selected here. Place a check in the check box next to the desired visual effects to select that effect.

■ **Image & Text:**

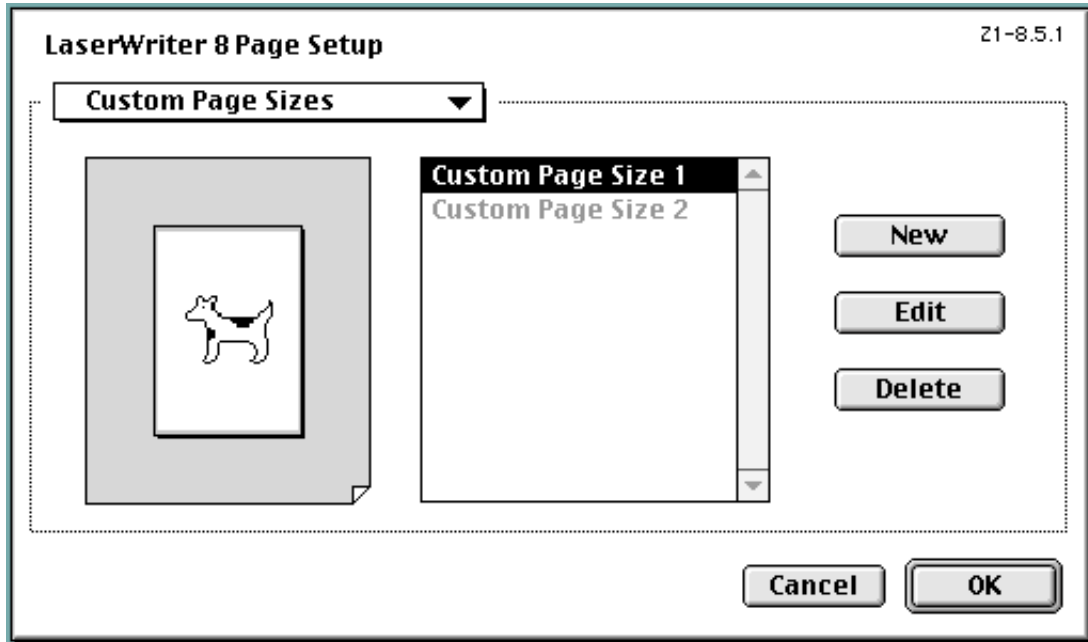
Place a check in the check box next to the desired printing options to select that option.

6. Printer Driver for Macintosh

6-8 Custom paper sizes Dialog Box

When a paper size is selected in "Custom paper sizes" Dialog Box, the paper size can be set as desired.

* The actual layout of each dialog box and the available options and settings may differ somewhat depending upon the application and the version of LaserWriter that you are using.



■ **New button**

To create a new custom page size, click this button.

* The acceptable paper width is between 9.81 - 29.7 cm (metric) or 3.86" - 11.69" (inches). The acceptable paper length is between 14.82 - 43.18 cm (metric) or 5.83" - 17" (inches).

■ **Edit button**

To edit the selected custom page size, click this button.

■ **Delete button**

To delete the selected custom page size, click this button.

Free Manuals Download Website

<http://myh66.com>

<http://usermanuals.us>

<http://www.somanuals.com>

<http://www.4manuals.cc>

<http://www.manual-lib.com>

<http://www.404manual.com>

<http://www.luxmanual.com>

<http://aubethermostatmanual.com>

Golf course search by state

<http://golfingnear.com>

Email search by domain

<http://emailbydomain.com>

Auto manuals search

<http://auto.somanuals.com>

TV manuals search

<http://tv.somanuals.com>