

*Telelogic Directory Server  
Installation Guide  
Release 4.3.0.1*

Before using this information, be sure to read the general information under Appendix, [“Notices” on page 17](#).

This edition applies to **VERSION 4.3.0.1, Telelogic Directory Server** and to all subsequent releases and modifications until otherwise indicated in new editions.

© **Copyright IBM Corporation 2006, 2008**

US Government Users Restricted Rights—Use, duplication or disclosure restricted by GSA ADP Schedule Contract with IBM Corp.

---

## *Table of contents*

<b>About this manual</b>	<b>1</b>
Contacting IBM Rational Software Support. . . . .	2
Conventions used in this guide . . . . .	3
<b>Installing TDS patch</b>	<b>5</b>
Operating system requirements . . . . .	5
What errors are fixed for Linux . . . . .	5
Patch installation on Linux . . . . .	6
What errors are fixed for Windows . . . . .	10
Patch installation on Windows . . . . .	10
<b>Appendix A: Notices</b>	<b>17</b>
Trademarks . . . . .	20
<b>Index</b>	<b>21</b>



# 1

## About this manual

This manual contains details about the Telelogic® Directory Server™ (TDS) patch installation.

It contains the following sections:

- [TDS documentation](#)
- [Contacting IBM Rational Software Support](#)
- [Conventions used in this guide](#)

### TDS documentation

This section provides the information on the related documents available for TDS. The following TDS documents are available on the Product Support Web site, <https://support.telelogic.com>

Document name	Description
Telelogic Directory Server Installation Guide	Provides information about installing TDS.
Telelogic Directory Server Product Manual	Provides detailed information about TDS features supported in this release.
Telelogic Directory Server Administration Manual	Provides information about TDS administration.

## Contacting IBM Rational Software Support

Support and information for Telelogic products is currently being transitioned from the Telelogic Support site to the IBM Rational Software Support site. During this transition phase, your product support location depends on your customer history.

### **Product support**

- If you are a heritage customer, meaning you were a Telelogic customer prior to November 1, 2008, please visit the <http://support.telelogic.com>

Telelogic customers will be redirected automatically to the IBM Rational Software Support site after the product information has been migrated.

- If you are a new Rational customer, meaning you did not have Telelogic-licensed products prior to November 1, 2008, please visit the [IBM Rational Software Support site](#).

Before you contact Support, gather the background information that you will need to describe your problem. When describing a problem to an IBM software support specialist, be as specific as possible and include all relevant background information so that the specialist can help you solve the problem efficiently. To save time, know the answers to these questions:

- What software versions were you running when the problem occurred?
- Do you have logs, traces, or messages that are related to the problem?
- Can you reproduce the problem? If so, what steps do you take to reproduce it?
- Is there a workaround for the problem? If so, be prepared to describe the workaround.

### **Other information**

For Rational software product news, events, and other information, visit the [IBM Rational Software Web site](#).

## Conventions used in this guide

Typeface	Description
<i>Italic</i>	Used for book titles and terminology.
<b>Bold</b>	Used for items that you can select and menu paths, also used for emphasis.
Courier	Used for commands, file names, and directory paths. Represents command syntax to be entered verbatim. Signifies computer output that displays on-screen.





# 2

## Installing TDS patch

TDS is a single enterprise directory solution designed for user authentication and administration for Telelogic® Lifecycle Solution™ (TLS) tools. The TDS allows the TLS users to log on using the same credentials across TLS tools for which they have authorized access.

This chapter provides the instructions on how to install the patch for Telelogic® Directory Server™ (TDS) on Linux and Windows. The patch installation contains the fixes for the specific Linux and Windows errors.

It chapter contains the following sections:

- [Operating system requirements](#)
- [What errors are fixed for Linux](#)
- [Patch installation on Linux](#)
- [What errors are fixed for Windows](#)
- [Patch installation on Windows](#)

### Operating system requirements

For information on operating system requirements, see the platform specific *Telelogic Directory Server Installation Guide*. You can find the documents on Product Support Web site, <https://support.telelogic.com>.

### What errors are fixed for Linux

With existing TDS 4.3 installation, the server does not startup on Linux. The current installer fails with the following error:

```
"GLPCOM012E Failed to load plugin from /opt/ibm/ldap/V6.1/lib64/TDSPlugins/tdssasl-linux.so."
```

The TDS 4.3.0.1 patch installation fixes this error and enables the system to startup automatically after the successful installation.

## Patch installation on Linux

The patch must be installed on top of the existing TDS 4.3 release. This patch is intended for **Red Hat Enterprise Linux 4, 64 bit** operating system only.

**Note** This patch must be installed only when you get the error similar to the one given in the [What errors are fixed for Linux](#) section.

To install the TDS patch, do the following:

1. Make sure that you have the TDS 4.3 installed on your machine.
2. Go to the install directory and set the execute permission to **TDS.bin**

```
chmod +x TDS.bin
```

Skip this step for CD and DVD installation.

3. The *root* user should have write permission to the below directories:

```
$ /usr/local/bin
```

```
$ /opt
```

The directories should not be NFS enabled.

4. In the install directory, type **./TDS.bin** and press Enter.

The **Introduction** dialog box appears.



5. Click **Next**.
6. The **License Agreement** dialog box appears. You can save the licence details in a document.

To copy the license information:

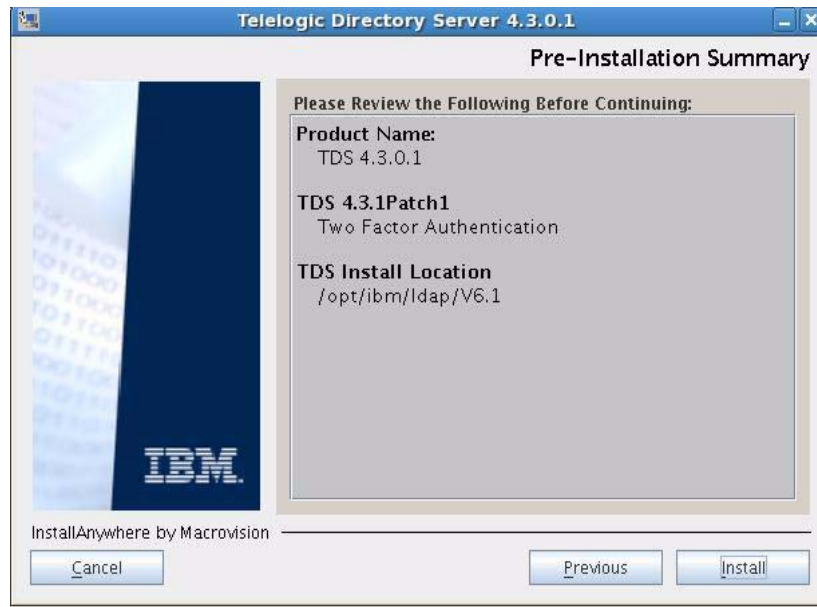
- Right-click the license window and click **Select All**, and then click **Copy**.
  - Open any file, paste the license information and save the file.
7. Review and click **I accept the terms of the license agreement**.



8. Click **Next**.
- The **Pre-Installation Summary** dialog box appears. This dialog box shows the installation summary.

9. Review the information, and then click **Install**.

The **Install Complete** dialog box appears if the installation is successful.



10. Click **Done** to exit the installer.



## What errors are fixed for Windows

The current TDS patch release provides the solution for the following errors.

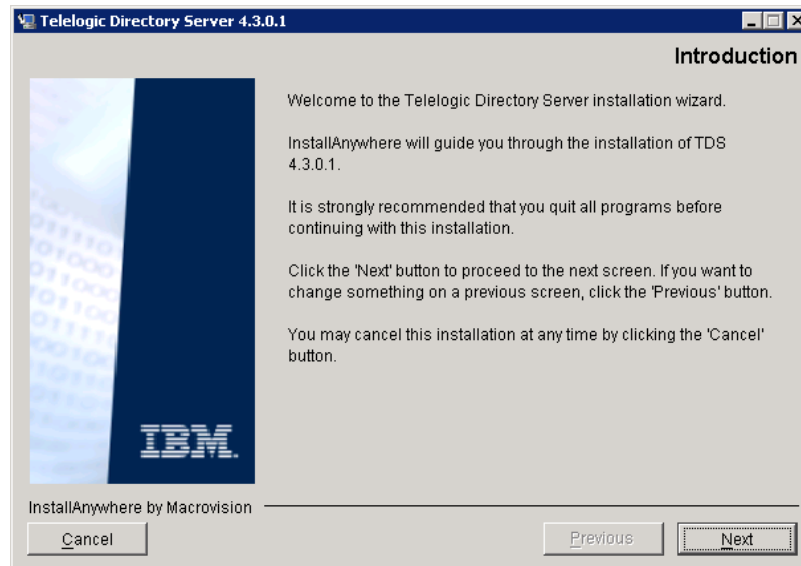
1. The existing TDS 4.3 installer does not display the user name as *First Name* and *Last Name* for Japanese localization. The current patch installation fixes this error by displaying the user name as *First Name Last Name* (E.g. *John Smith*).
2. To ensure the data security, certain vital information is prevented from writing into the `ibmslapd.log` file. This patch provides enhanced data security by further strengthening the security vulnerability.

## Patch installation on Windows

The patch must be installed on top of the existing TDS 4.3 release.

To install the TDS patch, do the following:

1. Open the `<TDS Image>\Install` folder and double-click the `TDS.exe`. The **Introduction** dialog box appears.

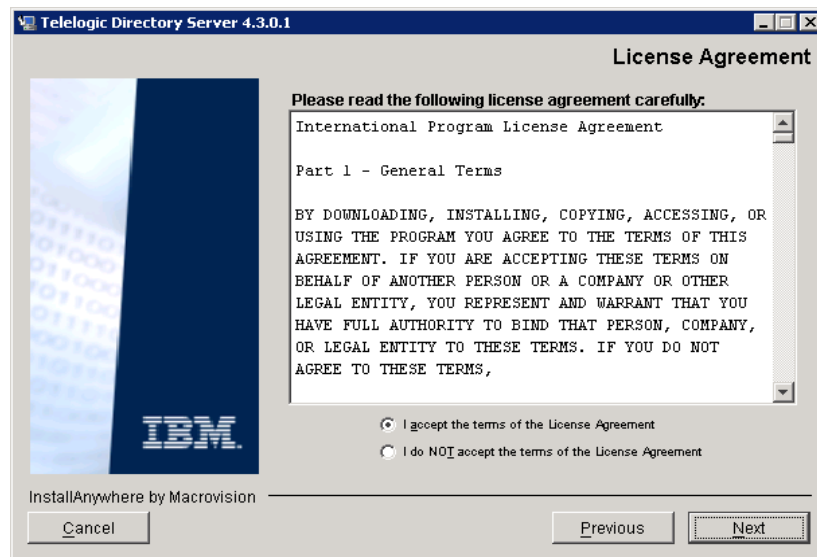


2. Click **Next**. The **License Agreement** dialog box appears.

3. You can save the licence details in a document.

To copy the license information:

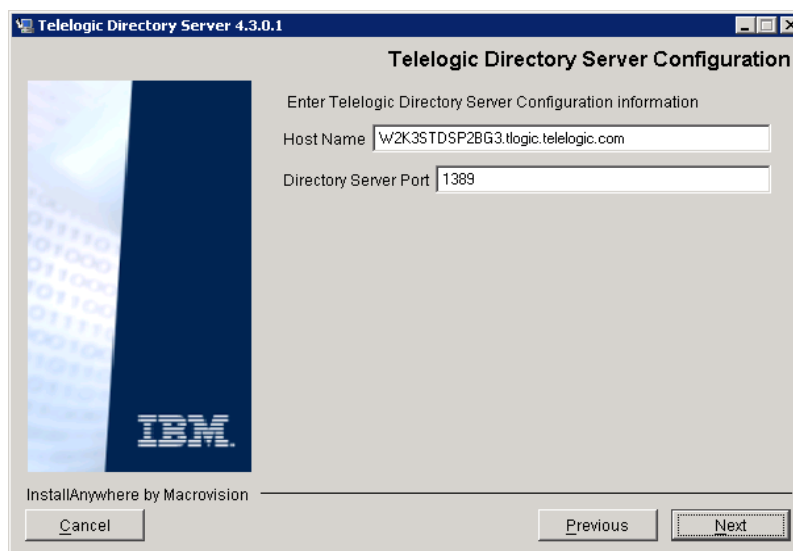
- Right click on the licence window and click **Select All**, and then click **Copy**.
  - Open any file, paste the license information and save the file.
4. Review and click **I accept the terms of the license agreement**.



5. Click **Next**.

The **Telelogic Directory Server Configuration** dialog box appears. This defines the configuration settings for the TDS.

6. Type the directory server configuration properties.



The field description and the value to be entered in each field is explained in the following table.

Field Name	Description	Values
Host Name	The host name of the computer.	By default, the installer uses the valid computer name. Use the default value provided by the installer or enter a valid computer name in this field.
Directory Server Port	The port number of the directory server.	By default, the installer uses the LDAP server port number "1389". Use the default value provided by the installer or enter the valid port number for the computer in this field.



7. Click **Next**. Type the **Directory Administrator User** password.

Telelogic Directory Server Administration

Telelogic Directory Server Administrator  
tdsadmin

Administrator Password (Minimum 8 characters)  
\*\*\*\*\*

Confirm Password  
\*\*\*\*\*

InstallAnywhere by Macrovision

Cancel Previous Next

The field description and the value to be entered in each field is explained in the following table:

Field Name	Description	Values
Telelogic Directory Server Administrator	The admin user for the TDS.	The TDS administrator ID is set by default. The administrator ID cannot be modified.
Administrator Password	The password for TDS admin user.	Type the administrator password. Password must contain the following: <ul style="list-style-type: none"> <li>• Password must be of minimum 8 characters in length.</li> <li>• Password must contain 1 upper case character, and 3 special characters.</li> </ul>

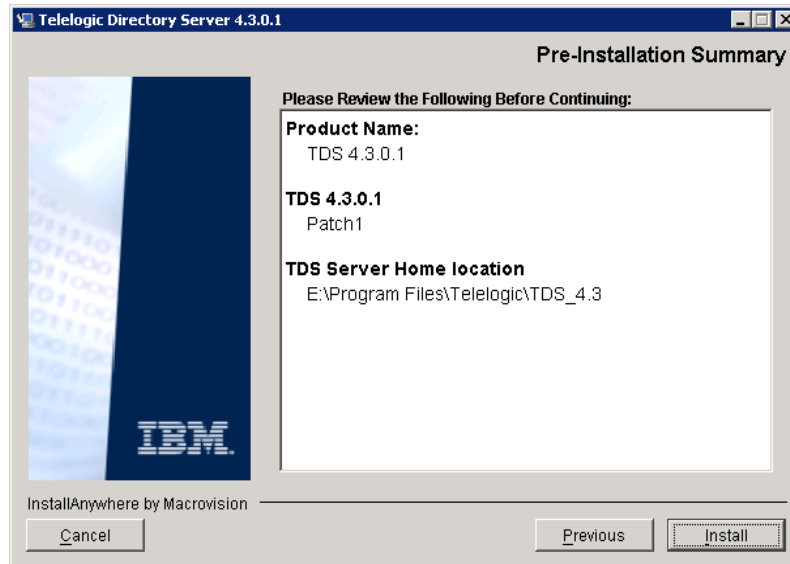
Field Name	Description	Values
Confirm Password	This describes the password authentication for the TDS admin user.	Re-enter the password in this field. Both passwords should match for the installation to continue.

8. Click **Next**.

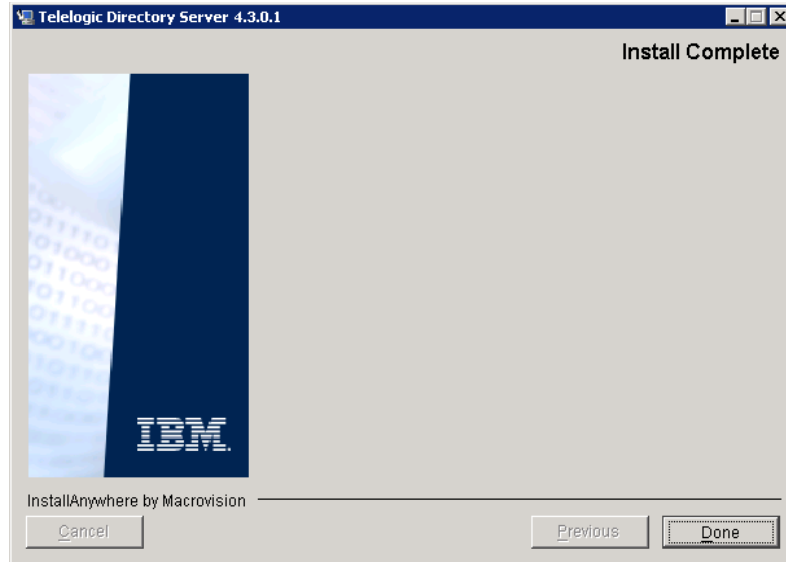
The **Pre-Installation Summary** dialog box appears. This dialog box shows the installation summary.

9. Review the information, and then click **Install**.

The **Install Complete** dialog box appears if the installation is successful.



10. Click **Done** to exit the installer.





## **Appendix: Notices**

This information was developed for products and services offered in the U.S.A. IBM may not offer the products, services, or features discussed in this document in other countries. Consult your local IBM representative for information on the products and services currently available in your area. Any reference to an IBM product, program, or service is not intended to state or imply that only that IBM product, program, or service may be used. Any functionally equivalent product, program, or service that does not infringe any IBM intellectual property right may be used instead. However, it is the user's responsibility to evaluate and verify the operation of any non-IBM product, program, or service.

IBM may have patents or pending patent applications covering subject matter described in this document. The furnishing of this document does not grant you any license to these patents. You can send written license inquiries to:

IBM Director of Licensing  
IBM Corporation  
North Castle Drive  
Armonk, NY 10504-1785  
U.S.A.

For license inquiries regarding double-byte character set (DBCS) information, contact the IBM Intellectual Property Department in your country or send written inquiries to:

IBM World Trade Asia Corporation  
Licensing  
2-31 Roppongi 3-chome, Minato-ku  
Tokyo 106-0032, Japan

**The following paragraph does not apply to the United Kingdom or any other country where such provisions are inconsistent with local law:**  
INTERNATIONAL BUSINESS MACHINES CORPORATION PROVIDES THIS PUBLICATION "AS IS" WITHOUT WARRANTY OF ANY KIND, EITHER EXPRESS OR IMPLIED, INCLUDING, BUT NOT LIMITED TO, THE IMPLIED WARRANTIES OF NON-INFRINGEMENT, MERCHANTABILITY OR FITNESS FOR A PARTICULAR PURPOSE. Some states do not allow disclaimer of express or implied warranties in certain transactions. Therefore, this statement may not apply to you.

This information could include technical inaccuracies or typographical errors. Changes are periodically made to the information herein; these changes will be incorporated in new editions of the publication. IBM may make improvements and/or changes in the product(s) and/or the program(s) described in this publication at any time without notice.

Any references in this information to non-IBM Web sites are provided for convenience only and do not in any manner serve as an endorsement of those Web sites. The materials at those Web sites are not part of the materials for this IBM product and use of those Web sites is at your own risk.

IBM may use or distribute any of the information you supply in any way it believes appropriate without incurring any obligation to you.

Licensees of this program who wish to have information about it for the purpose of enabling: (i) the exchange of information between independently created programs and other programs (including this one) and (ii) the mutual use of the information which has been exchanged, should contact:

Intellectual Property Dept. for Rational Software  
IBM Corporation  
1 Rogers Street  
Cambridge, Massachusetts 02142  
U.S.A.

Such information may be available, subject to appropriate terms and conditions, including in some cases, payment of a fee.

The licensed program described in this document and all licensed material available for it are provided by IBM under terms of the IBM Customer Agreement, IBM International Program License Agreement or any equivalent agreement between us.

Any performance data contained herein was determined in a controlled environment. Therefore, the results obtained in other operating environments may vary significantly. Some measurements may have been made on development-level systems and there is no guarantee that these measurements will be the same on generally available systems. Furthermore, some measurements may have been estimated through extrapolation. Actual results may vary. Users of this document should verify the applicable data for their specific environment.

Information concerning non-IBM products was obtained from the suppliers of those products, their published announcements or other publicly available sources. IBM has not tested those products and cannot confirm the accuracy of

---

performance, compatibility or any other claims related to non-IBM products. Questions on the capabilities of non-IBM products should be addressed to the suppliers of those products.

This information contains examples of data and reports used in daily business operations. To illustrate them as completely as possible, the examples include the names of individuals, companies, brands, and products. All of these names are fictitious and any similarity to the names and addresses used by an actual business enterprise is entirely coincidental.

If you are viewing this information softcopy, the photographs and color illustrations may not appear.

## Trademarks

IBM, the IBM logo, ibm.com, Telelogic, Telelogic Directory Server are trademarks or registered trademarks of International Business Machines Corporation in the United States, other countries, or both. These and other IBM trademarked terms are marked on their first occurrence in this information with the appropriate symbol (® or ™), indicating US registered or common law trademarks owned by IBM at the time this information was published. Such trademarks may also be registered or common law trademarks in other countries. A current list of IBM trademarks is available on the Web at [www.ibm.com/legal/copytrade.html](http://www.ibm.com/legal/copytrade.html).

Linux is a trademark of Linus Torvalds in the United States, other countries, or both.

Microsoft, Windows, Windows 2003, Windows XP, Windows Vista and/or other Microsoft products referenced herein are either trademarks or registered trademarks of Microsoft Corporation.

Other company, product or service names may be trademarks or service marks of others.



## **Index**

### **A**

administrator password 9

### **C**

contact information 2

contacting support 2

### **D**

directory server administrator 9

document conventions 3

documentation convention 3

### **H**

host name 8

### **I**

IBM Customer Support 2

### **L**

linux install fixes 1

linux installation 2

### **O**

operating system requirement 1

### **S**

server port 8

### **T**

TDS documentation 1

### **W**

windows install fixes 6

windows installation 6



## Free Manuals Download Website

<http://myh66.com>

<http://usermanuals.us>

<http://www.somanuals.com>

<http://www.4manuals.cc>

<http://www.manual-lib.com>

<http://www.404manual.com>

<http://www.luxmanual.com>

<http://aubethermostatmanual.com>

Golf course search by state

<http://golfingnear.com>

Email search by domain

<http://emailbydomain.com>

Auto manuals search

<http://auto.somanuals.com>

TV manuals search

<http://tv.somanuals.com>