

User's Manual for:
PP2-5600 (Serial Modem)
PP2I-5600 (Infrared &Serial Modem)

Revision	Issue Date	Engineer/Comments
1.0	April 11, 2002	YLYang/Pre-release
1.1	July 5, 2002	WWJ/Proofread

Copyright by 3JTech. Co., Ltd. All rights reserved.

TABLE

TABLE.....	2
I. INTRODUCTION.....	3
II. 56K ACCESS INFORMATION.....	4
III. HARDWARE INSTALLATION.....	5
BEFORE YOU START.....	5
SYSTEM REQUIREMENTS.....	6
FRONT VIEW.....	6
REAR VIEW.....	6
BATTERY COMPARTMENT.....	6
SETTING YOUR MODEM.....	7
<i>Connect the modem to a PC through the Serial Cable.....</i>	<i>7</i>
<i>Connect the modem to PDA.....</i>	<i>8</i>
<i>LED Status.....</i>	<i>8</i>
POWER-DOWN MODE.....	8
IV. SOFTWARE INSTALLATION GUIDE.....	9
FOR PALM ORGANISER.....	9
FOR WINDOWS CE/POCKET PC.....	12
FOR PSION-5 SERIES.....	15
FOR PSION-618C.....	18
FOR PENBEX.....	21
FOR SHARP.....	24
FOR WINDOWS98/ME/2000/XP.....	28
V. TECHNICAL SUPPORT.....	32
VI. SPECIFICATION.....	33
3JTECH. CO., LTD. LIMITED WARRANTY.....	34
APPENDIX A _WINDOWS98 IR SETUP(R220L/210L/200L).....	37
APPENDIX B _COUNTRY CODE SETTING.....	40
APPENDIX C _ADVANCED AT COMMANDS (FOR DEBUG).....	41

I. INTRODUCTION

Thank you for purchasing 3JTech's Pegasus III series high-speed modem with Infrared wireless communication. The users could connect the infrared modem to PDAs, with IrDA port and different OS like Win CE, Palm, PSION, Linux, DOS and Penbex, etc. It extends the features of the PDA. Connecting the modem to a phone line and turn it into a great travel-mate for Internet connection, file transferring or accessing your own proprietary servers. The Modem can also be used with Personal Computers through its serial port with the included serial cable or through an external IrDA dundo from third parties. With the high performance Modem chipset, this modem will take the user into the wide world of Internet.

3JTech also works on IrDA protocol and other firmware modification to meet with customer's special needs. For modification of modem firmware to fit your customized application please contact with 3JTech at tech@3jtech.com.

The modem also offers a battery compartment. It uses four AAA rechargeable or disposal batteries. Unlike other modem like compact flash connector type of modem or PCMCIA type of modem, it won't drain power from the battery of your PDA.

This user's manual explains how to install the modem and it's software. Installation is quick and easy if you follow the instructions carefully. You'll also learn from this manual about how to detect and solve problems you might encounter with the Pegasus III series modem.

II. 56K ACCESS INFORMATION

The International Telecommunications Union (ITU) determines the technical protocols communications devices must use to interoperate with each other.

Modems that comply with ITU standards can “talk” to other standards-compliant modems and fax machines worldwide.

The ITU has determined a worldwide standard for 56K modem technology. With a Pegasus III series modem, you can get the Internet service you want from any service provider who offers the ITU 56K standard technology to their customers.

3JTech also works on IrDA protocol to provide access of PDA or other devices, which have IrDA interface to access the Internet, file transferring or accessing users' own proprietary information servers.

For modification of modem firmware to fit your customized application please contact with 3JTech at tech@3jtech.com.

* In accordance with the ITU-T standard for 56K transmissions, this modem is capable of 56 Kbps downloads. However, actual speeds may vary depending on line conditions and other factors. Uploads from users to servers travel at speeds of up to 33.6 Kbps. An analogue phone line compatible with the ITU-T 56K standard technology, and an Internet provider or corporate host site compatible with the ITU-T 56K standard are necessary for these high-speed downloads.

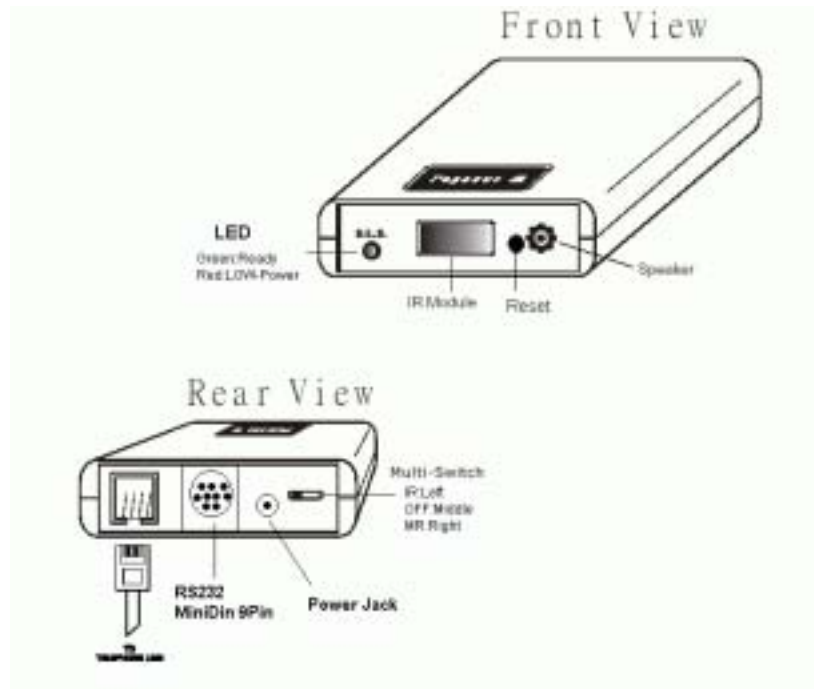
III. HARDWARE INSTALLATION

Before You Start

Please check if the follows are include in your Pegasus III packaging Box:

- Infrared Modem
- Travel Charger
- Telephone Cord
- CD with User's Manual PDF file and driver
- RS-232 cable for direct connect

(One side is MiniDIN 9Pin connector, and one side is mini din 9-pin female connector.)



System Requirements

PDA or any hardware devices with IrDA or RS232 serial interface and any of the following Operating System: Windows 95 and above, DOS, Linux, WinCE, Palm OS, PSION, Penbex and others

Front View

1. **Speaker** produces the sound to show the connection to the ISP or host device.
2. **IR Module** output the Infrared signal to search and connect to another Infrared device.
3. **LED** shows the status of on-line, infrared connection and power of the battery.

Rear View

1. **Multi switch** for selecting functions among Serial, Off and IR
2. **RS-232/Power port** for connecting to a PDA, PC or other device with serial port using the serial cable included in this package.
3. **Phone Jack** for connecting to telephone line.
4. **Power Jack** for connecting to the AC power supply through a 100~240VAC travel charger.

Battery Compartment

The modem could be used with four rechargeable AAA batteries or four regular disposal batteries. When use with disposal AAA battery, you could also use four batteries. There is a better efficiency when using three disposal batteries. Connecting the travel charger, the smart circuit inside the modem will automatically

take care of the batteries charging . Also, the main power source will be from the travel charger. In order to save power, the modem will:

- 1) Get into sleeping mode when no data is transmitting over the phone line for over 4 seconds, (The transition between sleeping and normal operation modes is transparent to users)
- 2) Automatically shut down when there is no data transmitting over the phone line for over 1Min.

When the modem is shut down, you will need to push the reset button to turn on the modem.

***Notice:** Do not open the battery cover. If you encounter problems with your rechargeable batteries, please contact your local dealer.*

Setting Your Modem

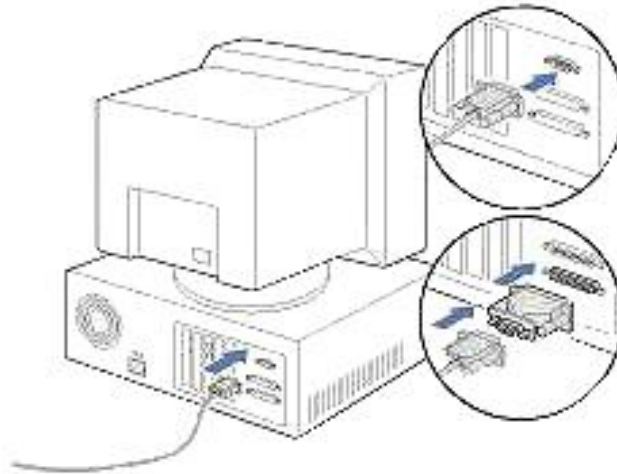
Connect the modem to a PC through the Serial Cable

The modem could of course works with your regular PC including the desktop with a serial port:

- 1) Insert one end of the phone cord (included) into the Pegasus III modem's LINE jack and plug the other end into any analogue phone jack. Important: Connect to an analogue line only. Using a non-analogue line (e.g., digital, Multi line) may damage the modem.

(Refer to the connection diagram page 3).

- 2) Insert one end of the Serial (Power combination) Cord into the serial socket located on the rear of the modem. Insert the other end of power cord into the travel charger. Plug the travel charger into a regular power wall outlet (You can also use batteries for power.) Connect the same end to your serial port of your computer. If your PC only has a 25 pin serial port, please use a 25 pin to 9-pin converter.



- 3) Turn the switch to Serial on the rear of modem. Then please read the **Software Installation** chapter.

Connect the modem to PDA

By Serial Port

Connect the cable for PDA (PP2-5600 Version) to the cradle of your PDA. Push the switch to **Serial**. Next, please see the **Installation Guide**.

By IR Port (Only for PP2I-5600 models.)

Please read the **Installation Guide** for IR.

LED Status

Green:

The colour of LED is tells the modem is Power on.

When switching the switch to MR or IR of the modem, the modem powers on.

The **GREEN** LED should light on when it is ready to connect.

Red:

When the battery is low (under 4V), the **Red** LED would light. Please recharge the battery or replace the battery.

Power-Down Mode

Use terminal and AT command to control power down mode:

1. Enable power-down mode:
Issue **“ATS63.1=0”**. (Def.)
2. Disable power-down mode:
Issue **“ATS63.1=1”**.

IV. SOFTWARE INSTALLATION GUIDE

For Palm Organiser

(1) Hardware needed:

1. 3JTech. Pegasus III series modem
2. Pilot 1000*. Pilot 5000*, Palm Pilot Personal*, Palm Pilot Professional*, Palm III and above (IIIe Not include), IBM Workpad series and TRGPro
3. Cable for Palm III or Cable for Palm V

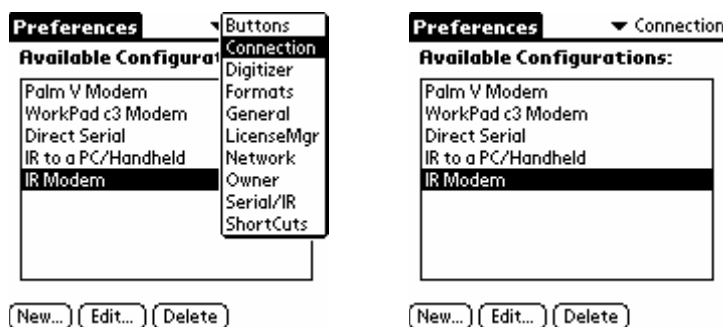
(The Serial Cable synchronizes the Palm organizer and the Pegasus modem. One end of the cable is a Palm connector (see *Note* below); the other end is the MiniDIN 9Pin male connector that connects to Pegasus III modem. Please follow the following steps)

(2) Software needed

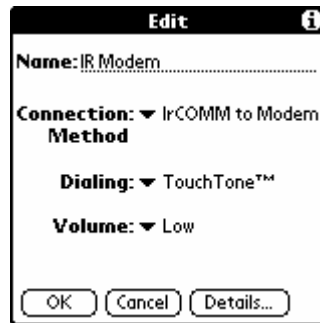
1. Palm Desktop 3.0.1 or above
2. Palm OS 3.3 or above**

(3) Modem Set-up:

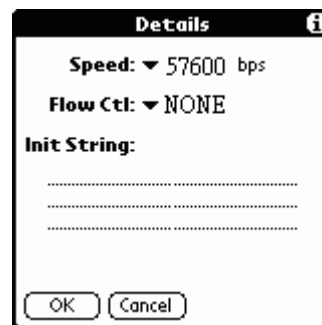
1. Tap on "APPLICATIONS"
2. Tap on "PREFS" (Preferences).
3. Go to the top right hand corner under "Preference" page, and tap on the drop down menu.
4. Tap on "CONNECTION" in the drop-down menu on the top right hand corner.
5. Tap on "New".



6. Next to "Name", write *IR MODEM*.
7. Next to **Connection Method** select **IrCOMM to MODEM**.

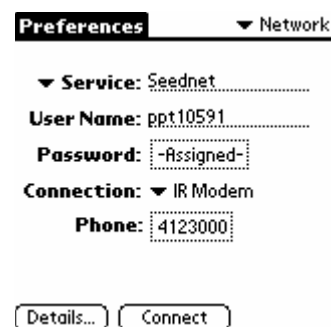
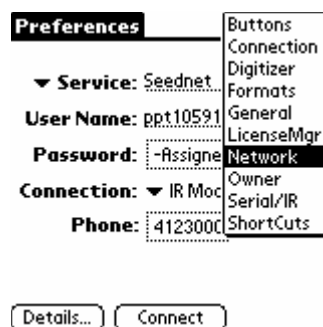


8. Tap on **Details** on the bottom right
 9. Next to **SPEED** tap on the down arrow then select **"57,600bps"**
 10. Go to **"Volume"** and Tap on the down arrow. Then choose a volume of your choice.
- Note:* To turn speaker off enter the Init String M0
11. Go to **"Flow Ctrl"** and Tap on the down arrow and then select **"NONE"**.
 12. Go to **"String"** and type **"ATZ"**.
 13. Tap on **OK** and then tap on **OK** again.
 - 14.



(4) Network Set-up:

1. Go to the top right hand corner under **"Preference"** page again then select **"Network"** in the drop-down menu.
2. Go to **"Service"** and Tap on the down arrow and then select your service provider: (AOL, Earthlink, etc.). You can also write in and add your own service provider if yours is not listed.



3. Type in "user's name", "user's password", and "phone number" using the onscreen keyboard.

Preferences ▼ Network

▼ Service: Seednet.....

User Name: ppt10591.....

Password: -Assigned-.....

Connection: ▼ IR Modem

Phone: 4123000.....

Details... Connect

4. Next to **CONNECTION** choose *IR Modem*.

Turn on the IR modem by switching the switch to IR (located at the rear of the modem). If your battery is not charged you may have to connect the AC power adapter.

Point your Palm's IR port to the Modem IR port and tap on "connect".



Note: you can connect up to 1.5 meters away at a 15-degree angle.

NOTE:

1. Make sure to use the cable for Palm Pilot when your Palm Organiser is Palm Pilot Personal***, Palm Pilot Professional***, Palm III, Palm IIIx, Palm IIIc, IBM Workpad 30X, TGRPro.
 2. Make sure to use the cable for Palm V if your Palm OS Organiser is Palm V, Palm Vx, IBM Workpad C3 PC Companion (2Mb) and IBM Workpad C3 PC (8Mb).
- * Make sure you have upgraded the memory card. TRG SuperPilot Memory Board II XL or Palm III 2MB Upgrade Kit, and be sure to upgrade to OS 3.3 or above.
- ** Please download the latest version from Palm's official website.

<http://www.palm.com/>

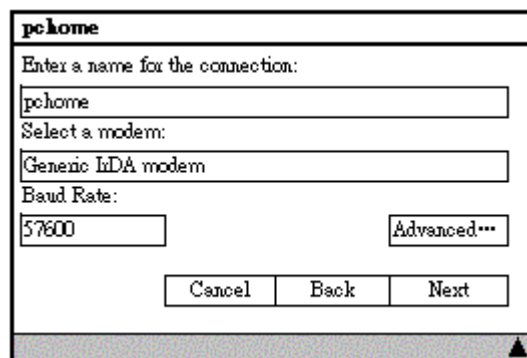
For Windows CE/Pocket PC

(1) Hardware needed

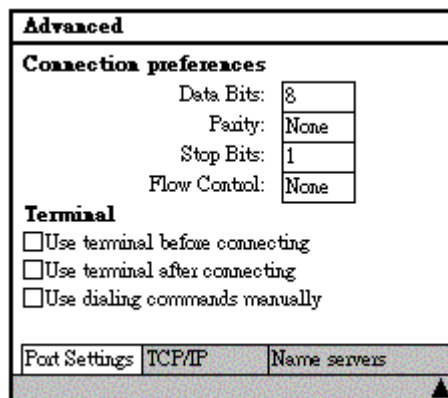
1. Pegasus III (PP2I-5600) IrDA modem
2. Windows CE or Pocket PC devices
3. Phone line
4. Battery or Adaptor

(2) POCKET PC Modem setting

1. Turn on your POCKET PC. Make sure your Pocket PC organizer is not on the cradle.
2. Tap on the **Start** menu and select **Settings**.
3. Tap on the "**Connections**" menu.
4. Tap on "**Modem**" on the bottom left corner of your screen.
5. Under modem connections tap **New Connection**.
6. Enter a name for your connection. We recommend you use your ISP's name.
7. Under **Select Modem** choose "**Generic IrDA modem**" for IrDA port.



8. Under Baud Rate select "**57,600**".
9. Choose "**Advanced....**" icon.
10. Set **Connection preferences** to [8, N, 1] and **Flow Control** to "**None**".



11. Choose **OK** to setting mode.
12. Tap on **Next** to enter **country code**, **area code** and **Phone number**.
13. Tap on **Next**, **don't type anything in "Extra dial-string modem commands" if don't know it**. And then choose **Finish** to exit setting menu.
14. Choose Dialing menu then add a local setting.
15. Enter **location name** and set to **"Tone dialing"**.
16. Tap on **Dialing Patterns** menu and set functions as you want. (If you don't dial country code or area code, set functions as "g").

Dialing Patterns	
For local calls, dial:	g
For long distance calls, dial:	fg
For international calls, dial:	efg
(E,e=country code; F,f=area code; G,g=number)	
Edit ▲	

17. Choose **OK** to setting mode.
18. Choose **OK** to finish **Modem setting**.

(3) POCKET PC Connections setting

1. Tap on the **Start** menu and select **Connections**.
2. Select the Modem name that just **Step 6** you settings
3. Enter your **user name** and **password**. Contact your ISP or server administrator if you do not know what they are.

pchome	
Username:	pchome
Password:	*****
Domain:	
	<input checked="" type="checkbox"/> Save password
Phone:	T4496688
Dial from:	Work
<input type="button" value="Cancel"/> <input type="button" value="Connect"/> <input type="button" value="Dialing Options..."/>	
Edit ▲	

4. Choose **"Dial Options"** if you want change what your Modem setting in **Step 4-16**.
5. Tap on **Connect**, it will dial to your ISP.

(4) Internet Explorer settings

1. Tap on the **Start** menu and select **Internet Explorer**.
2. Enter the **WWW address** and tap on **OK**

(5) Mail settings

1. Tap on the **Start** menu and select **Inbox**.
2. Tap on **Services** below windows.
3. Choose **New Service**.
4. Enter your **Service type** (POP3 Mail) and choose **Next**.
5. Choose **Connection** to the modem that you just setting.
Enter your **POP3 mail server** under **Server** block.
Enter your mail **User ID** and **Password**. Then tap on Next.
6. Enter your **SMTP mail server**.
Enter your **Return address**. And choose **Next**.
7. Tap on **Next** if you don't want change setting.
8. Tap on **Finish** if you don't want change setting.
9. Choose **OK** to finish mail settings.
10. Tap on **New** to stat edit a new .mail.

Once connection with your ISP or remote server is established, you may use your Internet or communication software. Tap on **disconnect** to terminate your dial-up session once you are done and remember to turn off your modem.

For Connecting PSION using Serial Cable

This section uses PSION 5 as an example.

(1) Hardware needed

1. Pegasus III series modem
2. Psion 5
3. Null modem cable

(The Serial Cable synchronizes the PSION 5 and the Pegasus modem. One end of the cable is a 9-pin RS-232 male connector that connects to the female RS232 9-pin serial cable provided by PSION series 5. The other end is the PCMCIA male connector that connects to Pegasus modem. Please follow the following steps)

(2) Software needed

Message Suite

(Using your PC, go to www.pSION.com and download software for modem control. The modem software consists of (E-mail), web, and modem setup software). The software is called "**Message Suite**" and it is available at www.pSION.com/downloads/mssgsuite.html (After downloading and installing "**Message Suite**" to the your PSION 5, verify that the software has been successfully installed.)

(3) Connect the modem to PSION 5 series

Connect one end of the male 9-pin RS-232 (shorter one, included) into the female 9-pin RS-232 cable connected to the rear of the PSION 5. Connect the other end of the PCMCIA connector into the socket to the rear of the modem.

(Refer to the connection diagram on next page)

Insert one end of the phone cord (included) into the Pegasus modem's LINE jack and plug the other end into any analog phone jack. Important: Connect to an analog line only. Using a non-analog line (e.g., digital, PBX, Multi line) may damage the modem.

(4) PSION 5 Remote Dial-Up Connection Setup

1. Tap on "**Extras**". You should see web and e-mail. If you don't, then you need to reinstall the software. Contact **PSION** for assistance.
2. Continue by going to "**Control panel**", and tap on "**Modem**". Choose "**Hayes compatible modem**" under **Modem Settings**, and then tap "**Edit**"

3. Make sure the name is "**Hayes compatible modem**"
Speed is "**57,600**" baud.
Connect via is "**Serial**" and
Fax class is "**Auto**".
Tap on "**Initialization**"
Enter "**ATZ**" under Init. (Reset) string.
Enter "**AT&F**" under Data init. string.
And enter "**AT&D2**" under Fax init. string.
Tap "**Handshaking**"
Set flow control to "**None**" under Flow control.
Terminal detect (DSR/DTR) and Carrier detect (DCD) should be unchecked.
Tap "**OK**"; tap "**OK**" again to close "**Modem settings**".
Tap "**Internet**" and enter your Internet service provider information:
Tap "**Edit**" and you can enter your ISP name, for example: "**Earthlink**"
Chose "**Dial-up**" next to **Connection** Type.
Enter Standard dial-up number, for example: 941-1034.
Tap "**Account**" under Edit Internet service, enter Username and Password.
Tap "**Addresses**" then "**Login**" then "**Advanced**", without changing any settings.
Tap "**Done**" and tap "**OK**" to close Internet service settings

(5) To set up an Email Account:

Tap the button on the upper left corner, choose "**Settings**" under "**Tools**" menu, and then choose "**Email**". Set up your E-mail account by entering your Email name, address, and SMTP server (if any). Use MIME encoding and Auto send on opening should be checked OK

Email Screen:



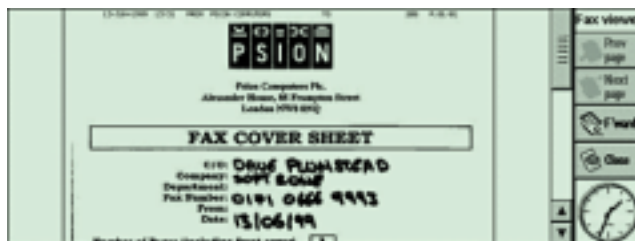
(6) To set up your Fax information:

Under the "Tools" menu choose "**Settings**", and then choose "**Fax**".

Enter your Fax number, name and preferred resolution, then check the "**Show connection dialog**" and tap "**OK**".

Setup is now complete.

Fax Screen:



(7) To Email or browse the web on Internet:

Tap "**Extras**" on the lower right side of screen, and tap "**Web**" (for Web Browsing), or Tap "**Email**" for sending E-mails.

Web Screen:

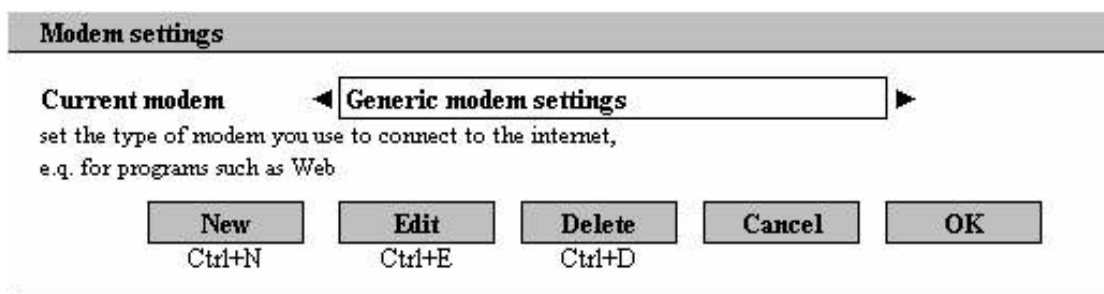


For Connecting PSION using IrDA Port

This section uses PSION 618C as an example.

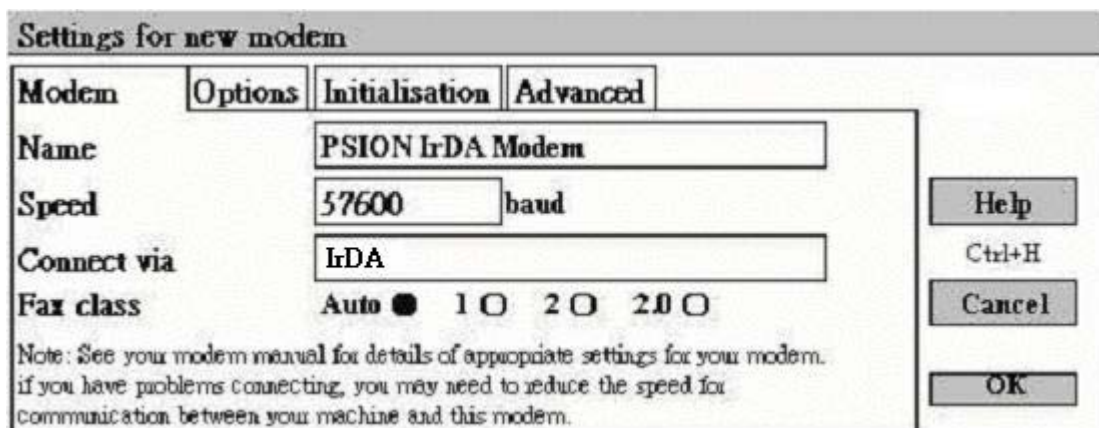
This installation guide is intended to help PSION users install the PP2I modem. After following the procedures in this manual, the installation of the PP2I modem should be complete and functional.

1. Connect the power and telephone line to your PP2I modem.
2. Turn on your PP2I modem.
3. On your PSION, go to *System* → *Control Panel* → *Modem* and setup your modem. The screen below should show:



Select *Generic modem settings* and click *OK*.

4. Then, as shown below:



Under *Modem Options*, enter the name of the modem: *PSION IrDA Modem*, speed: *57,600* baud, connect via: *IrDA*, and under fax class, select *Auto*. Then, under *Modem Advanced* as shown on the next page, enter *Flow control: "None"*, Terminal detect (DSR/DTR): (*un-checked*), Carrier detect (DCD): (*un-checked*), and Modem type: *Fixed Line*, and click *OK*.

Settings for new modem	
Modem	Options Initialisation Advanced
Flow control	None
Terminal detect(DSR/DTR)	<input type="checkbox"/>
Carrier detect (DCD)	<input type="checkbox"/>
Note: See your modem manual for details of appropriate settings for your modem.	
Modem type	Fixed Line
<input type="button" value="Help"/> Ctrl+H <input type="button" value="Cancel"/> <input type="button" value="OK"/>	

6. Go to *System* → *Control Panel* → *Internet* and setup your Internet settings.
 The screen below should show:

Internet service settings	
Current Internet service	< No services defined >
set the Internet service for connecting internet programs, e.g. Web	
Show connection dialog	<input checked="" type="checkbox"/>
If idle, stay online for	02:00 mm:ss
On exit, stay online for	00:00 mm:ss
<input type="button" value="New"/> Ctrl+N <input type="button" value="Edit"/> Ctrl+E <input type="button" value="Delete"/> Ctrl+D <input type="button" value="Cancel"/> <input type="button" value="OK"/>	

Click *New* to setup your Internet.

7. Then, the screen below should show:

Settings for new modem	
Service	Account Addresses Login Advanced
Name	Your service name
Connection type	Dial-up ● Direct○
Use "smart" dialing	<input checked="" type="checkbox"/>
Turn smart dialing off to dial numbers exactly as entered	
Standard dial-up number	+886 2 4125678
Other dial-up number	<input type="button" value="Edit"/> Ctrl+E
<input type="button" value="Help"/> Ctrl+H <input type="button" value="Save as"/> Ctrl+S <input type="button" value="Cancel"/> <input type="button" value="Done"/> Ctrl+D	

Under Service, enter *Your service name* (ISP name), select *Dial up* for your connection type, select *Use "smart" dialing*, and enter the *Standard dial-up*

number which is the number you wish to dial (contact your ISP if you don't have this number.)

8. Under Account, enter your *username*, *password*, and *confirm password*.
The screen should be like as shown below:

Settings for new modem	
Service	Account
Addresses	Login
Advanced	
Manual login	<input type="checkbox"/>
Turn 'Manual login' off to send account details automatically on connection	
Username	"Your username "
Password	" Your password "
Confirm password	" Your password "
Note: Username and password are case sensitive	
	Help Ctl+H
	Save as Ctl+S
	Cancel
	Done Ctl+D

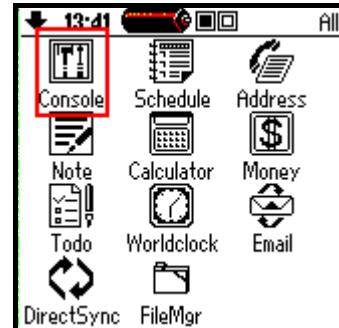
9. Under Addresses, also enter your *username*, *password*, and *confirm password*.

Settings for new modem	
Service	Account
Addresses	Login
Advanced	
Leave 'Get address...'	
Turn 'Manual login' off to send account details automatically on connection	
Username	"Your username "
Password	" Your password "
Confirm password	" Your password "
Note: Username and password are case sensitive	
	Help Ctl+H
	Save as Ctl+S
	Cancel
	Done Ctl+D

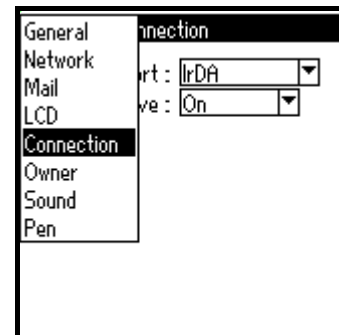
10. Click *Done* and your PP2I modem and should be installed and functional.

For PENBEX

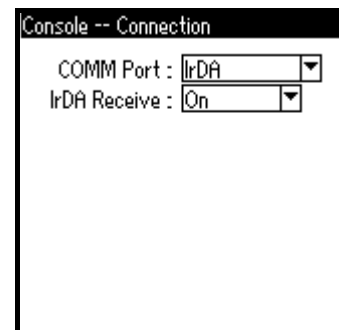
1. Tip home icon to back to the “Main Page”. And choose “Console” icon.



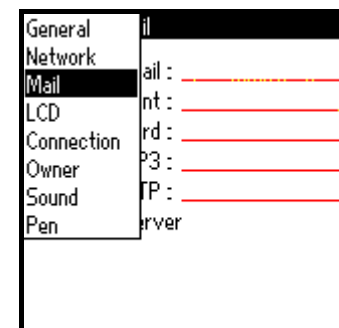
2. Chose “Connection” at title bar.



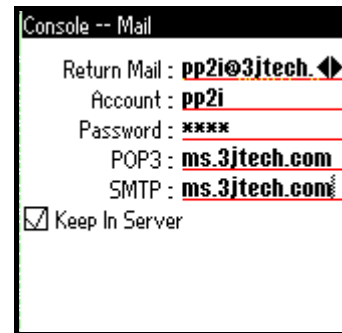
3. Change “COMM Port” to “IrDA”. And change “IrDA Receive” to “On”.



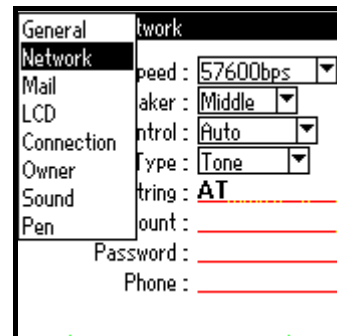
4. Chose “Mail” at title bar.



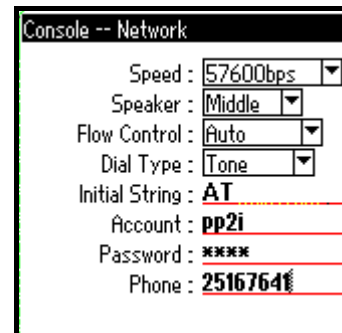
5. Setting the mail information.



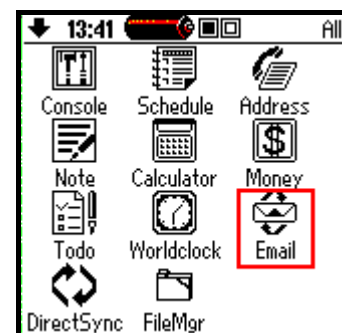
6. Chose "Network" at title bar.



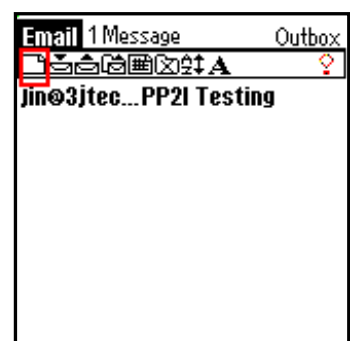
7. Setting the dial information.



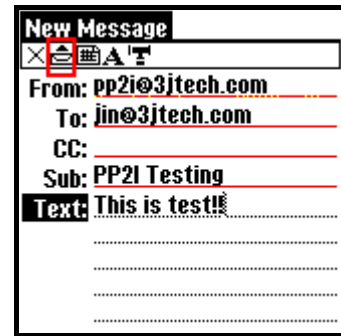
8. Tip home icon to back to the "Main Page". And choose "Email" icon.



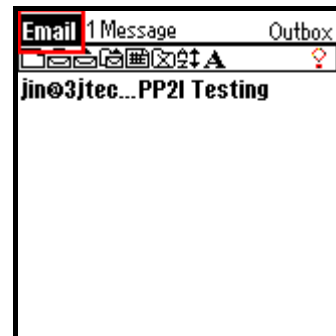
9. Add a new mail.



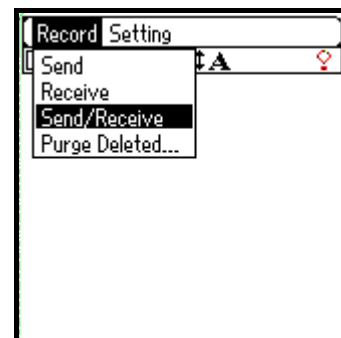
10. Type the mail information. And then sent the mail to “Outbox”.



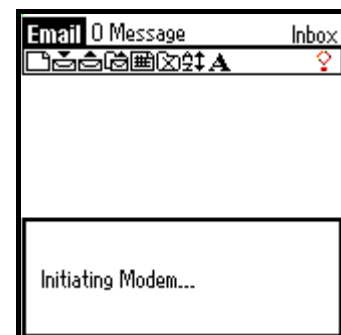
11. Tip “Email” at title bar.



12. Tip “Record” and chose “Send/Receive” to send mail and receive mail.



13. PDA is Setting finish, modem is dialing.

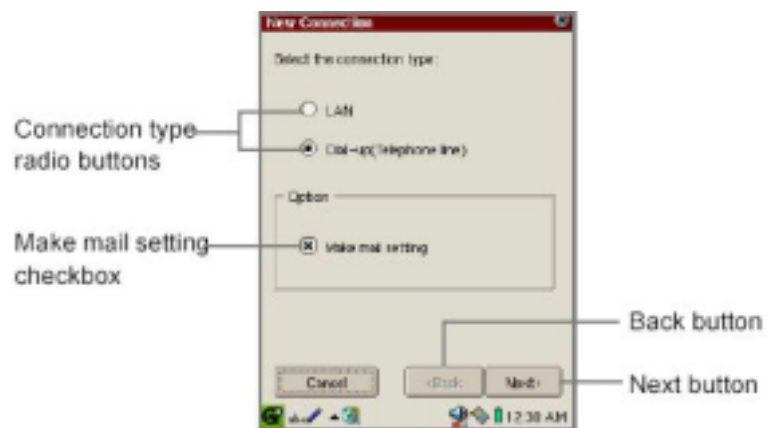


For SHARP

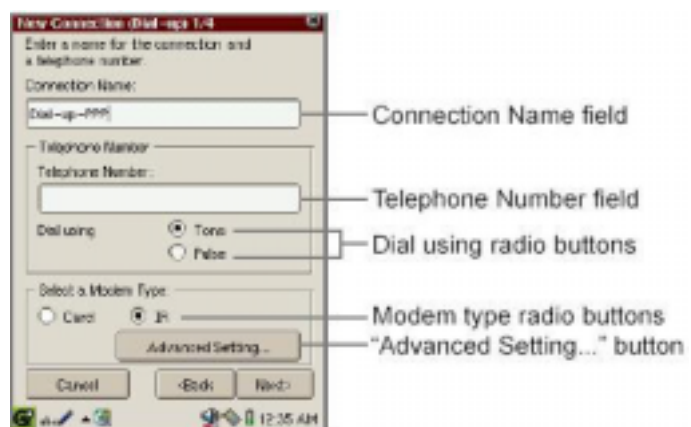
1. On the Internet Setting Wizard screen, tap “New”.



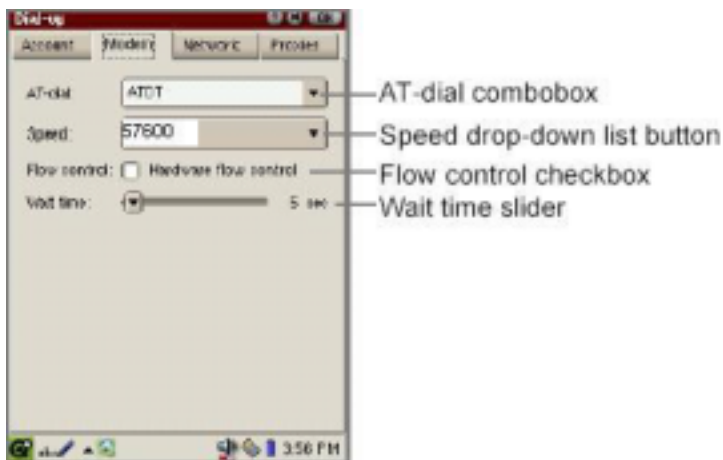
2. Tap the “Dial-up (Telephone line)” radio button for “Select the connection type”. Then Press “Next”.



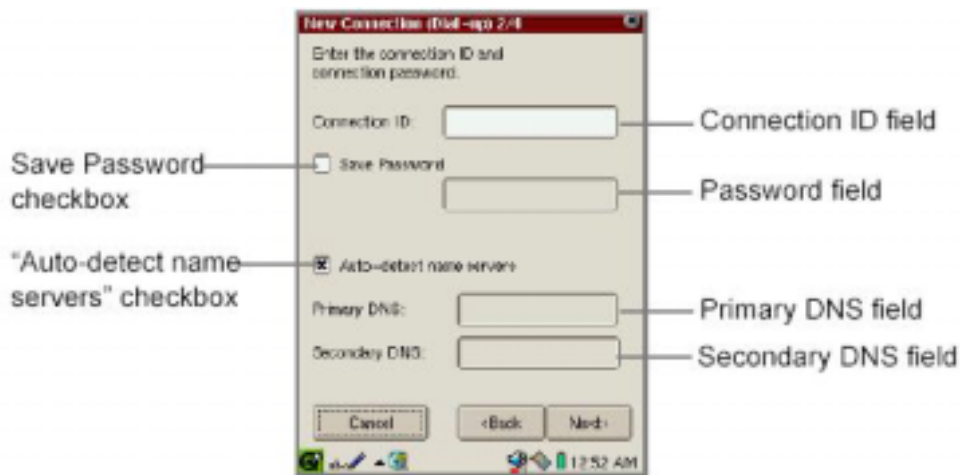
3. Setting The Modem type at “IR”.



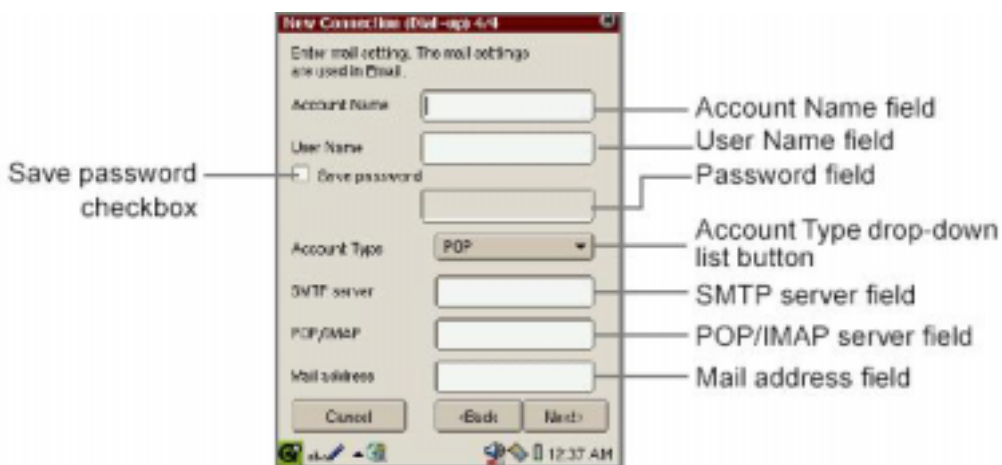
4. Tap the "Advanced Setting". Set the AT-command at "ATDT", speed at "57600", Hardware flow control "not select". And tap OK. Then tap "Next".



5. The second screen appears telling you to set the connection ID and connection password. Then tap "Next".

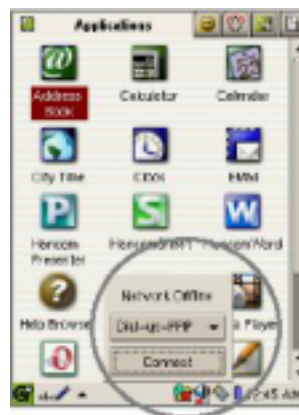


6. Setting your Proxy, or "No Proxies". Then tap "Next".
7. The next screen appears telling you to set up the e-mail settings. Then tap "Next".

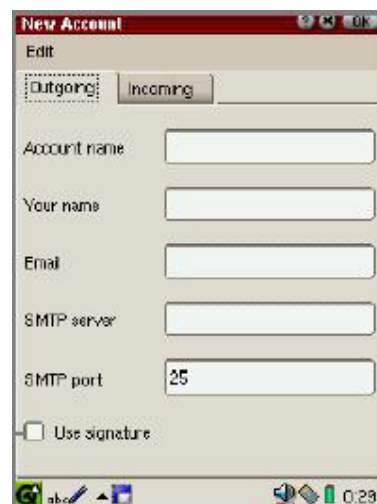


8. Check your setting on this page. Tap "Register" to finish Modem Setting.
9. Tap the Connection Status icon () on the taskbar. The pop-up list for network

connection appears. Select dial-up name that you just setting.



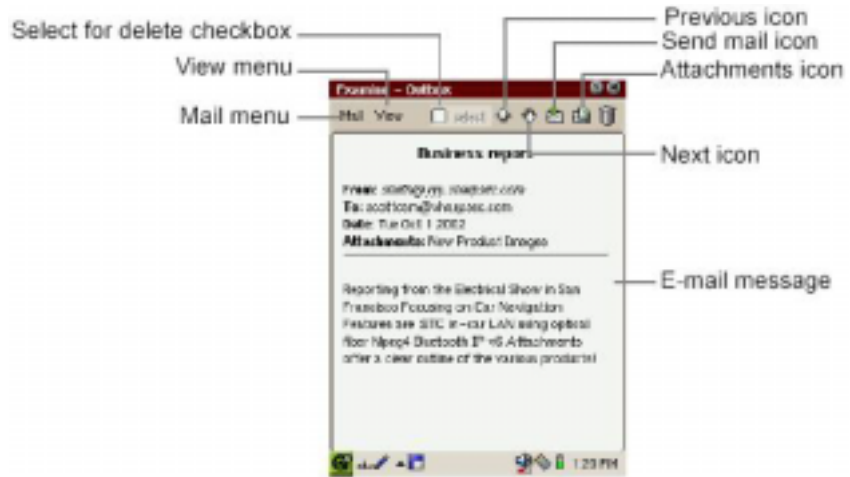
10. After the dial tone, you are connecting to your ISP now.
11. On the Index screen, tap the “Options” menu and then tap “New Account”.
12. Tap the “Outgoing” tab to set the sending options.




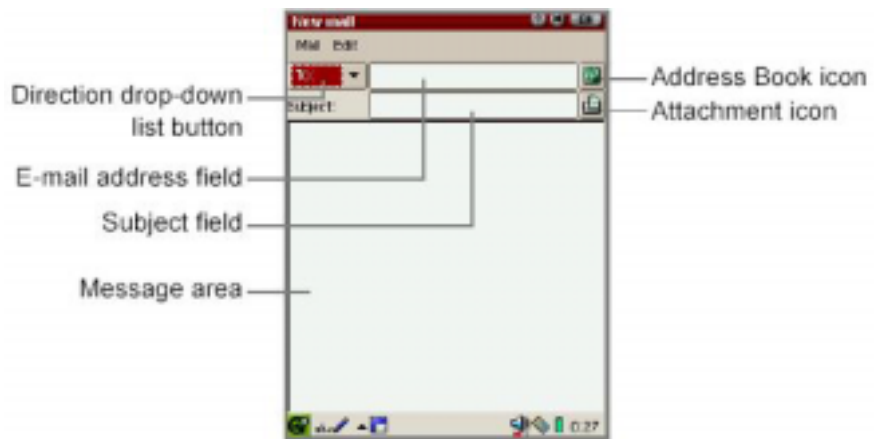
13. Tap the “Incoming” tab to set the receiving options.



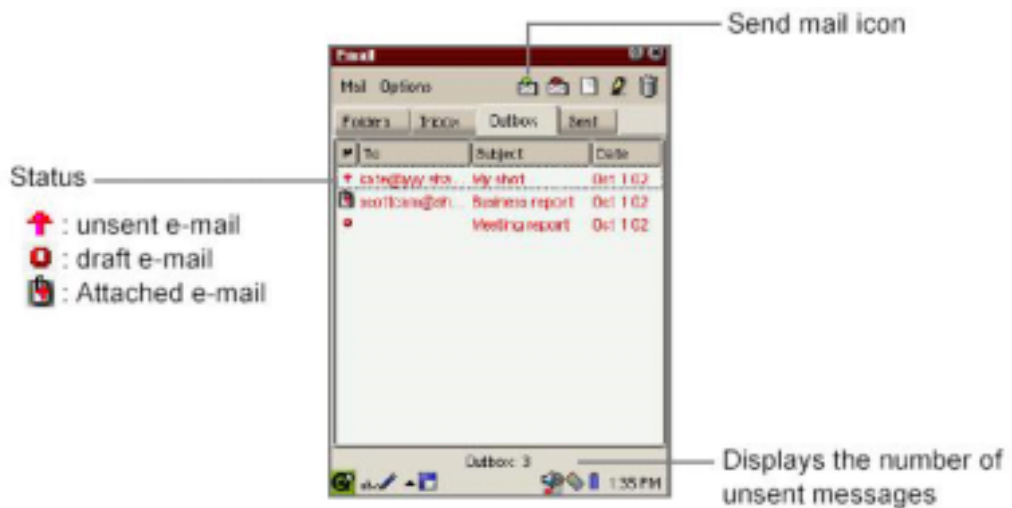
14. Tap “OK” to finish the settings.
15. On the Index screen, tap an e-mail message.



16 On the Index screen, tap  for a new mail. Tap “OK” after finish the mail.



17. Tap “Send mail” to send the mail.



For Windows98/Me/2000/XP

The modem comes with a modem driver for Windows 95/98/Me. Please follow the steps below to install the modem.

Make sure you have install IrDA device on PC



IrDA enable Icon

You can reference the **Appendix A_Windows98 IR setup(R220L/210L/200L)**.

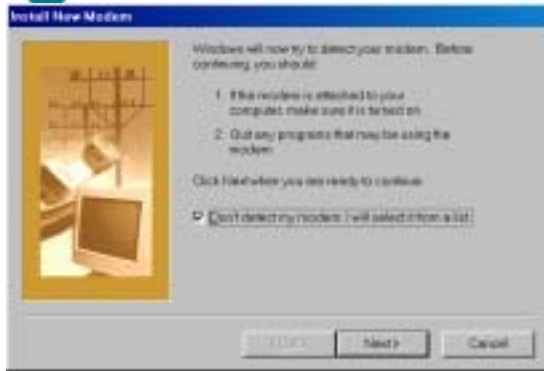
1. Turn on your computer and get in the Windows 98 main operation screen. Double click **My Computer**, then **Control Panel**.



1. Choose **Modem** in **Control Panel** to set-up the parameters of the modem.



2. Click **“Add”** in Properties of Modem.



3. Check the square **“Do not check my Modem, I will choose in the list”**. Click **“Next”**.



5. Choose **“Hard Disk”** and Choose **“mdm3jir.inf”**. Then choose **“ZyDAS ZD51_RS2 MROM”** and Click **“Next”**.

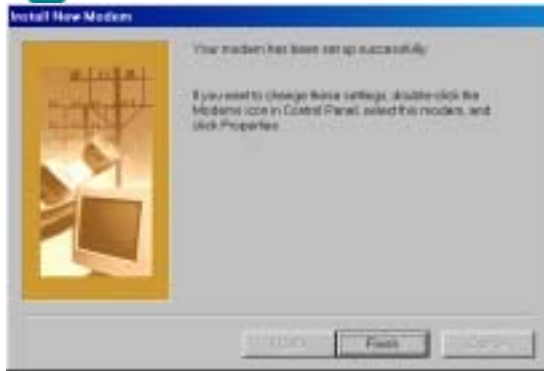
(If you haven't drive, you can choose **“standard modem”**)



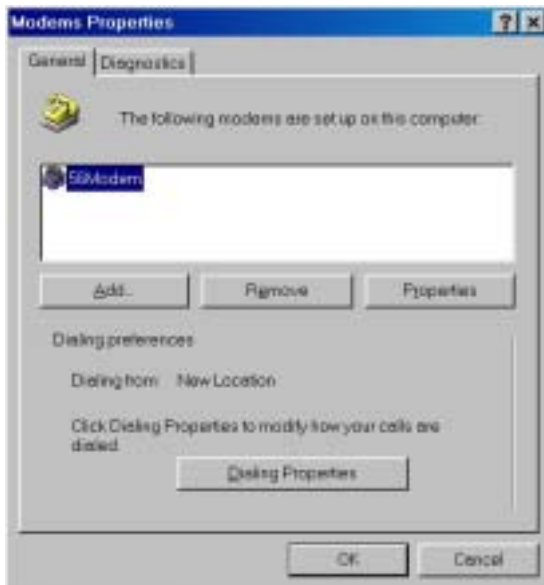
5. Choose **“Com Port”** for RS232 Modem, Choose **“Virtual Infrared COM Port”** for IR Modem, Click **“Next”**.



6. The System is installing the modem.



7. Modem installed OK. Click **OK**.



8. Then set-up the baud rate. Click **Properties** to set-up the baud rate in **Modem** of **Control Panel**.



9. Choose “**Com Port**” for RS232 Modem, and “**Virtual Infrared COM Port**” for IR Modem,

Choose **Baud Rate (57,600)** under **ZyDAS ZD51_RS2 MROM**.

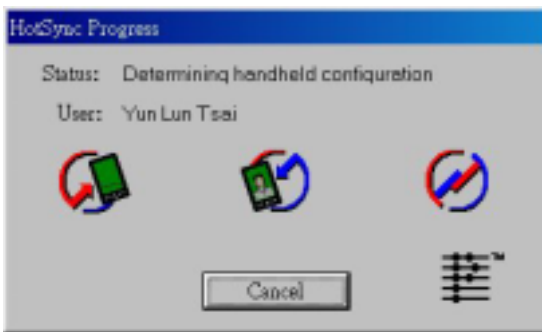
Click **OK** to finish set-up.



10. After installing the Palm Desktop Organizer Software, restart the computer.



HotSync Manager should now be running



11. Press the HotSync button from the cradle and the data will transfer between your Palm and PC.

V. TECHNICAL SUPPORT

If you are experiencing a problem with your modem, try resolving it with the troubleshooting suggestions preceding this section. If necessary you can contact your local dealer's Customer Service. Before returning any product, please call for a return authorization number.

Remember the following before contacting:

- Use a phone located near the computer to which your modem is attached.
- Have the product serial number available.
- Identify that modem you have and the communications software you are using.
- Identify your computer or its operating system.
- Write down details to your problem.

IMPORTANT:

- Before returning any product, please contact your local dealer for a Return Authorization number (RMA#).
- Some modems require a shipping and handling charge for Warranty/Guarantee Service.

VI. SPECIFICATION

Dimensions: 2.5"(65mm) x3.75"(95mm) x0.83"(21mm)

Weight: 7.35 oz

Battery: rechargeable battery

100V-240V travel charger

Dual operating modes: Infrared or serial RS-232

Works with Palm Pilot, Macs, Digital Cameras, PCs, Notebooks.

Compliant to the IrDA 1.0 standard for serial infrared (SIR) data communication

Link Distance 1 cm to 1.0 m

Angle = +/- 15 deg.

Downloadable MCU firmware from the host/DTE and downloadable MDP code modules from the MCU

Data modem

- ITU-T V.90
- V.34 (33.6 kbps), V.32 bis, V.32, V.22, V.23, and V.21; Bell 212A and 103
- ITU-T V.42 LAMP, MNP3, 4
- ITU-T V.42b and MNP5 data compression
- V.17, V.29 ter, and V.21 channel 2

Fax modem send and receive rate up to 14.4 kbps

Software compatible AT commands sets

NVRAM directory and stored profiles

Supports Serial PnP interface per Plug and Play External COM Device

Flow control and speed buffering

Automatic format/speed sending

+5V operation

*** IMPORTANT!** In accordance with the ITU-T standard for 56K transmissions, this modem is capable of 56 Kbps downloads. However, due to FCC rules which restrict power output of the service providers' modems, current download speeds are limited to 53 Kbps. Actual speeds may vary depending on line conditions and other factors. Uploads from users to server equipment travel at speeds up to 31.2 Kbps. An analogue phone line compatible with the ITU-T 56K standard technology, and an Internet provider or corporate host site compatible with the ITU-T 56K standard or K56Flex technology are necessary for these high-speed downloads.

3JTech. Co., Ltd. LIMITED WARRANTY

- **Hardware**

3JTech warrants its hardware products to be free from defects in workmanship and materials. Under normal use and service, warranty is for the following lengths of time from the date of purchase from 3JTech or its Authorized Reseller:

Pegasus III series modem	1 year
Other hardware products (unless otherwise specified in the warranty statement above)	1 year
Spare parts and spares kits	90 days

If a products does not operate as warranted above during the applicable period, 3JTech shall, at its option and expense, repair the defective product or part, deliver to Customer an equivalent product or part to replace the defective item, or refund to customer the purchase price paid for the defective product. All products that are replaced will become the property of 3JTech. Replacement products may be new or reconditioned. Any replaced or repaired product or part has a 90-day warranty or the remainder of the initial warranty period, whichever is longer.

3JTech shall not be responsible for any software, firmware, information, or memory data of customer contained in, stored on, or integrated with any products returned to 3JTech for repair, whether under warranty or not.

- **Software**

3JTech warrants that the software programs licensed from it will perform in substantial conformance to the program specifications therefore for a period of 90 days from the date of purchase from 3JTech or its Authorized Reseller. 3JTech warrants the media containing software against failure during the warranty period. No updates are provided. The sole obligation of 3JTech with respect to this express warranty shall be (at the discretion of 3JTech) to refund the purchase price paid by customer for any defective software products, or to replace any defective media with software, which substantially conforms to applicable 3Jtech's published specifications. Customer assumes responsibility for the selection of the appropriate applications program and associated reference materials. 3JTech makes no warranty or representation that its software products will work in combination with any hardware or applications software products provided by third parties, that the operation of the software products will be uninterrupted listed in the 3JTech software product documentation or specification as being compatible, 3JTech will make reasonable efforts to provide compatibility, except where the

non-compatibility is caused by a “bug” or defect in the third party’s product.

- **Standard Warranty Service**

Standard warranty service for hardware products may be obtained by delivering the defective product, accompanied by a copy of the dated proof of purchase, to 3JTech. Co., Ltd. or to an authorized dealer. Customer service is available during the applicable warranty period. Standard warranty service for software products may be obtained by contacting the 3JTech Customer Service or an Authorized 3J Tech Service Center, within the warranty period. Products returned to the 3JTech Customer Service must be preauthorized by 3JTech with a Return Material Authorization (RMA) number marked on the outside of the package, and sent prepaid, insured, and packaged appropriately for safe shipment. The repaired or replaced item will be shipped to Customer, at the expense of 3JTech, not later than thirty (30) days after receipt of the defective product by 3JTech.

- **Warranty Exclusive**

If a 3jtech product does not operate as intended, it shall be repaired, replaced, or refunded of the purchase price paid at the option of 3jtech. To the full extent allowed by law, the foregoing warranties and remedies are exclusive and are in lieu of all other warranties, terms, or conditions, express or implied, wither in fact or by opeartion of law, statutory or otherwise purpose, and satisfactory quality. 3jtech neither assumes nor authorizes any other person to assume for it any other liability in connection with the sale, installation, maintenance, or use of its products.

3jtech shall not be liable under this warranty if its testing and examinination disclose that the alleged defect in the product does not exist or was caused by customer’s or any third person’s mis-use, neglect, improper installation or testing, unauthorized attempts to repair or modify, or other cause beyond the range of the intended use, or by accident, fire, lighting, or other hazard.

- **Limitation of Liability**

To the full extent allowed by law, 3jtech also excludes for itself and its suppliers any liability, whether based in contract or tort (including negligence), for incidental, consequential, indirect, special, or punitive damages of any kind, or for loss of revenue or profits, loss of business, loss of information or data, or other financial loss arising out of or in connection with the sale, installation, maintenance, use, performance, failure, or interruption of its products, even if 3jtech or its authorized resseller has been advised of the possibility of such damageds, and limits its liability to repair, replacement, or refund of the purchase price paid, at the option of 3jtech. This disclaimer or liability for damages will not be affected if any remedy provided herein sjall fail of its essential purpose.

- **Disclaimer**

Some countries, states, or provinces do not allow the exclusion or limitation of implied warranties or the limitation of incidental or consequential damages for certain products supplied to consumers or the limitation of liability for personal injury, so the above limitations and exclusions may be limited in their application to you. When the implied warranties are not allowed to be excluded in their entirety, they will be limited to the duration of the applicable written warranty. This warranty gives you specific legal rights that may vary depending on local law.

Appendix A_ Windows98 IR setup(R220L/210L/200L)

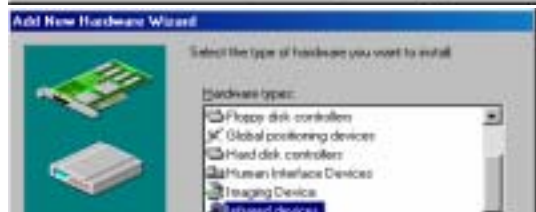
This section describes how to use 3JTech's PP2I infrared modem with ACTiSYS's IrDA dongle, which includes ACT-IR220L/210L/200L are IrDA dongles for converting RS232C to an infrared port.

Caution: To install this SIR driver in Windows98, please be sure no FIR driver was installed first. If the FIR driver was already installed, even you remove this FIR driver and then install SIR driver, it may not work properly.

*Do not install Infrared Driver Ver 2.0 under Windows98, it will not work at all.

Connect ACT-IR2xxL serial adapter to the Com port of desktop PC. If there is no IR window on the portable PC, another IR2xxL should be connected to the portable PC.

1. Go to "Control Panel" and double click on "Add New Hardware".
2. On the following screens, click on "Next" twice, then select "No, the device isn't in the list". And click on "next".
3. Select "No I want to select Hardware from the list",
4. Scroll down the menu and highlight "Infrared Devices", then click on "Next" twice.
5. Under "Manufacturers" Select



“(Infrared COM port or dongle)”,
 and then in “Infrared Devices”
 Select “(Generic Infrared Serial Port
 or dongle)”.

Click on “OK”.

- At “Infrared Transceiver”, Select
 “ACTiSYS IR-220L or ACTiSYS
 IR-200L”. For ACT-IR-210L, Select
 “Generic Infrared Port” instead. Then
 click on “Next”.



- Select the COM port to which the Infrared
 device is physically connected. In most
 cases, choose COM2. Click on “Next”.



- Follow the screen prompts until it asks
 you what default ports to use. Select
 “Use default ports (recommended)”.
 Click on “Next”.



- Click on “Finish”, The driver is installed



successfully.

10. Please reboot your computer.

11. Please refer to ACT-IR 200L/220L User's Manual, "Setting Up" - Section B to continue installation.

Appendix B_Country code setting

Type commands as follow:

ATS38=2#g< Decimal Country code >

For example US(255):

ATS38=2#G255

(AT#H could see the country code setting)

COUNTRY	TLD	Decimal	COUNTRY	TLD	Decimal
United States	US	255	Russia	SU	230
South Africa	ZA	254	Hungary	HU	229
Netherlands	NL	253	Slovak	SK	228
Denmark	DK	252	Thailand	TH	227
Switzerland	CH	225	Israel	IL	226
Sweden	SE	250	Switzerland	CH	225
United Kingdom	UK	249	UAE	AE	224
Belgium	BE	248	China_T	CN	
Greece	GR	247	China	CN	222
Czech Republic	CZ	246	Ukraine	UA	221
Norway	NO	245	Portugal	PT	220
Australia	AU	244	France	FR	219
New Zealand	NZ	243	Korea (u-law)	KR	218
Hong Kong	HK	242	Korea (a-law)	KR	217
Singapore	SG	241	Philippine	PH	216
Finland	FI	240	Slovenia	SI	215
Morocco	MA	239	India	IN	214
Taiwan	TW	238	Spain	SP	213
Germany	DE	237	European CTR21		212
Italy	IT	236	Turkey	TR	211
Ireland	IE	235	Taiwan (a-low)	TW	210
Japan	JP	234			
Austria	AT	233			
Malaysia	MY	232			
Poland	PL	231			

Appendix C_Advanced AT Commands (For Debug)

Command	Function & Description	
ATREEP	Display EEPROM	
ATREEP10000,256	Clear all EEPROM value to FF	
AT&T8	Modem send ASCII codes to PC continuous	
AT&T1 +++ AT#E1 AT#E0	Hardware noise testing	
ATS63.1	Power down mode (0 enable)	
ATI1	Show versions number.	
AT&W ATZ	Save current settings in EEPROM	

Free Manuals Download Website

<http://myh66.com>

<http://usermanuals.us>

<http://www.somanuals.com>

<http://www.4manuals.cc>

<http://www.manual-lib.com>

<http://www.404manual.com>

<http://www.luxmanual.com>

<http://aubethermostatmanual.com>

Golf course search by state

<http://golfingnear.com>

Email search by domain

<http://emailbydomain.com>

Auto manuals search

<http://auto.somanuals.com>

TV manuals search

<http://tv.somanuals.com>