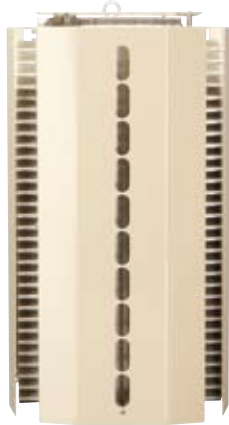


FlexWave™ Universal Radio Head

Flexible Outdoor Coverage and Capacity



Remote Unit



Host Unit

FlexWave™ – ADC's Next Generation of Wireless Solutions for Improving Wireless Capacity, Coverage, Flexibility and Customer Retention

ADC's FlexWave™ Universal Radio Head (URH) is the most flexible, scalable and complete solution for addressing coverage and capacity needs for current and emerging wireless networks. The URH improves wireless network coverage and capacity by extending services from existing cell sites, to hard-to-reach areas by distributing coverage from a centralized radio suite.

Utilizing a centralized distributed architecture, service providers are able to recognize significant CAPEX savings through a shared Base Station Hotel (multiple BTS co-located together), as well as a shared Remote Radio Transceiver approach. The URH's flexibility and scalability offers service providers an optimal solution for multiple applications such as; dense urban centers, dense suburban areas, campuses, enterprise buildings, subways and tunnels. The URH's distributed architecture and small form factor allows service providers to cost-effectively increase coverage and capacity in these hard-to-reach areas.

SPEC SHEET



www.adc.com • +1-952-938-8080 • 1-800-366-3891



FlexWave™ Universal Radio Head

Flexible Outdoor Coverage and Capacity

4 / 0 8 • 1 0 5 5 0 2 A E FlexWave™ Universal Radio Head

Features and Benefits:

- Flexible Architecture
 - Supports multiple frequency bands and wireless protocols in one enclosure
 - Scalable and modular
 - Multiple non-contiguous segments of 1.5 to 35 MHz each
 - BTS interface supporting RF and OBSAI/CPRI standards (Future)
 - Transport rates supporting Dark Fiber and Millimeter Wave
 - Field upgradeable
- User Friendly
 - Embedded element management system, supporting web based access and SNMP
 - Fully sealed, maintenance free for harsh outdoor applications
- Cost Effective
 - Efficient use of CAPEX equipment and real estate

Overview

With the increasing popularity and reliance on wireless voice and data services, subscribers expect to have coverage at anytime, anywhere. In addition to increased wireless device usage, wireless service providers implementing 3G technologies have recognized a reduction in coverage patterns within existing coverage footprints, opening coverage “holes” within the network. To resolve this issue, it requires service providers to extend coverage and/or increase capacity within the non-coverage areas. This has been traditionally accomplished by adding new macro cell towers; however, with city centers becoming more congested and local government zoning regulations becoming more stringent, obtaining permits for new macro cell sites is becoming increasingly difficult. The URH offers service providers a flexible, small form factor solution to extend coverage and capacity where needed, as well as support for the increasing number of protocols and frequencies available today and in the future.

Application

The URH uses patented digital-over-fiber technology to distribute RF to desired locations. The URH digitizes the entire designated RF band and digitally transports it over dark fiber or millimeter wave (MMW) links and reconstructs the signal at full bandwidth, regardless of modulation technology, at the remote location. ADC’s digital RF transport allows RF signals to be replicated at full dynamic range, independent of the link length, for improved data throughput. As service providers migrate to 3G and 4G networks, high-data rate broadband services, networks utilizing a URH backbone will be ready.

The URH offers a flexible architecture to distribute wireless coverage and capacity. Its versatility and small form factor allow service providers to quickly deploy networks in areas where zoning restrictions often hinder installation of traditional macro cell towers and base stations.

Centralization of base station capacity can also be realized using the URH. This allows service providers to further benefit by reducing capital expenditures and annual operating costs.



FlexWave™ Universal Radio Head

Flexible Outdoor Coverage and Capacity

System Description

The URH is a flexible and cost effective solution for Distributed Antenna System applications: Microcell and/or CPRI/OBSAI Remote Radio Head applications:

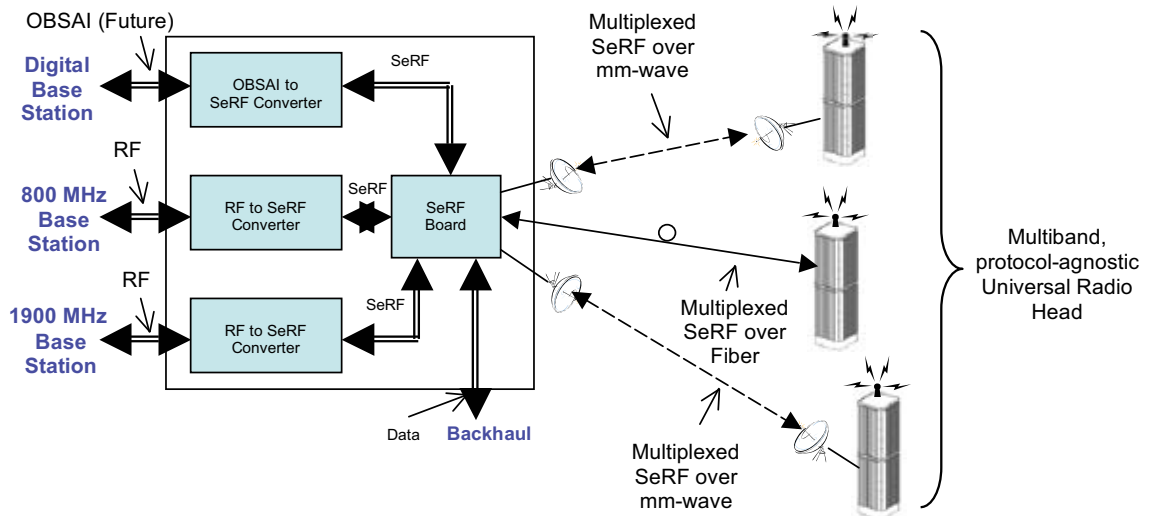
- Next Generation DAS; optimized for multiple frequency bands, scalable RF bandwidth & transport rates
- Flexible SeRF technology; serial RF processing, enabling scalable frequency bands and bandwidths
- Digital RF Transport; Digitally transports RF from the BTS to remote locations for distribution of RF signals.

Future Enhancements Will Include:

Will Include:

- CPRI/OBSAI; flexibility to support BTS interface standards
- Microcell; fully contained capacity solution utilizing cost efficient low bit-rate IP backhaul
- IP ready platform; smooth integration to IP front/backhaul networks

4 / 0 8 • 1 0 5 5 0 2 A E FlexWave™ Universal Radio Head





FlexWave™ Universal Radio Head

Flexible Outdoor Coverage and Capacity



Host Unit

Host Unit

The rack-mountable URH Host Unit is typically located at a Base Station or a facility housing a suite of Base Stations. On the forward path, the Host Unit receives the RF signal from the BTS and digitizes the designated RF band and digitally transports it over single mode fiber or a Millimeter Wave link to the Remote Unit. On the reverse path, the Host Unit receives the digitized RF signal from the remote unit and converts it back to RF for the BTS.

The URH Host Unit is completely modular in design, with all major modules; SeRF (Serial RF) card, DART (Digital/Analog Radio Transceiver) card, Power Supply, System board and Fan being hot swappable.

The URH Host Unit supports up to eight DART cards (supporting up to eight remote units) and is capable of simulcasting signals up to as many as eight Remote Units.

The Host Unit utilizes an embedded element management system for system configuration and network monitoring. The embedded EMS collects alarm information from both the Host and Remote Units. For multiple link deployments, multiple Host Units can be networked together at the same BTS site. Host Units can be daisy-chained together to allow monitoring and control of multiple Remote Units from a single user interface.

In addition to sending alarm notifications to the Element Management System (EMS) through software, the URH Host Unit also features front panel alarm reporting. LEDs on the front panel of the Host Unit will change color depending on the status of the unit. LED displays provide information regarding the following items:

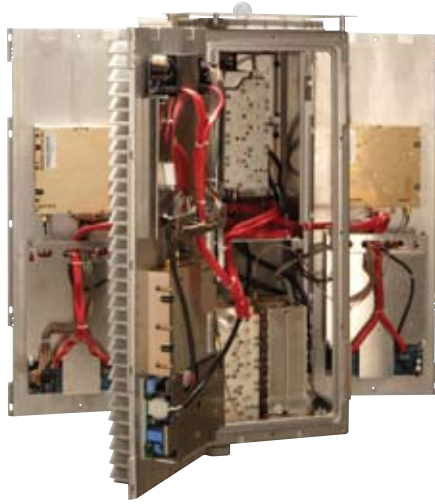
- Power
- System mode (active/standby)
- Indicate faulty unit
- RF conditions



FlexWave™ Universal Radio Head

Flexible Outdoor Coverage and Capacity

4 / 0 8 • 1 0 5 5 0 2 A E FlexWave™ Universal Radio Head



URH Remote Unit

Remote Unit

The URH Remote Unit utilizes a modular design, which supports up to three bands. Each side panel/door represents a single-band allowing for future upgrades and easy field access.

Mounting options for the Remote Unit include: pole-mount, inside pole-mount, wall-mount, strand-mount (single-band unit only), and sub-terrain vault-mount.

The URH Remote Unit is a fully sealed IP-65 rated enclosure, which minimizes maintenance and is ideal for harsh environments. Fiber, antenna, and power input/output connectors are all sealed for maximum protection.

On the forward path, the Remote Unit receives the digitized spectrum from the Host Unit and converts the spectrum back into RF to be distributed via an externally mounted antenna system. On the reverse path, the Remote Unit digitizes the designated RF spectrum and digitally transports it over single-mode fiber or MMW to the Host Unit.

In addition to sending alarm notifications to the EMS software, the URH Remote Unit also features LED alarm reporting. An LED on the bottom of the Remote Unit will illuminate upon a fault condition.



FlexWave™ Universal Radio Head

Flexible Outdoor Coverage and Capacity

4 / 0 8 • 1 0 5 5 0 2 A E FlexWave™ Universal Radio Head

Alarm and Management System

The URH utilizes an embedded network management for system configuration and network monitoring. The element management system (EMS) utilizes a web based interface or SNMP protocol for easy accesses to the system.

The Element Management System (EMS) provides operational and maintenance capabilities for the URH system (Host and Remote). The EMS can be used to access and monitor status of any Host and any associated Remote Units. The EMS has the ability to view status and parameter settings, download software, change parameters and monitor system performance and alarms

Access and troubleshooting can also be accomplished on-site at either the Host Unit and/or the Remote Unit by utilizing a craft interface. Thus, allowing technicians the ability to plug-in a laptop and access all associated units connected to it.

Host Site Capabilities

The EMS performs the following functions at the Host site:

- Provides real-time information regarding faults
- Set up simulcast ratios
- Digital timing delays
- Displays various system level values (voltages, RF, power, etc.)
- Records and generates history reports with time and date stamps
- Adjusts performance related parameters of the Host Unit and Remote Unit
- Permits placement of Host Unit and Remote Unit into standby mode
- Allows download of new software versions to the Host Unit and Remote Units

Network Monitoring Capabilities

The embedded EMS allows for remote alarm monitoring and network control of the URH can also be performed from an off-site location or Network Operation Center (NOC). Communications to the NOC can be performed using the web based interface or SNMP protocol.

The EMS performs the following functions at off-site locations such as the NOC:

- Provides real-time information regarding faults
- Displays various system level values (voltages, RF, power, etc.)
- Adjusts performance-related parameters of the Host Unit and Remote Unit
- Permits placement of Host Unit and Remote Unit into standby mode
- Access records and generates history reports with time and date stamps
- Allows download of new software versions to the Host Unit and Remote Units





FlexWave™ Universal Radio Head

Flexible Outdoor Coverage and Capacity

Specifications

RF SPECIFICATION

Supported Frequency Blocks:	1-3 per Remote Unit; 1-8 per Host Unit
Bandwidth:	1.5 to 35 MHz non-contiguous
Frequency Band Supported:	800 Cellular, E-SMR 800/900, 1900 PCS 1700/2100 AWS 700, 1800 and 2500MHz (Future Releases)
Digital Simulcast:	Up to 8:1 Single Host (can daisy chain Host for higher simulcast)
Diversity Receive:	Yes (Optional)

PROPAGATION DELAY

System Delay:	<12 microseconds
Delay Management:	Digital (Manual or Automatic)

NOISE FIGURE

Noise Figure:	<5 dB
Input IP3:	>-8 dBm

OPTICAL SPECIFICATIONS

Optical Budget:	10 dB (Standard); 26 dB (Optional)
Digital Transport Rate:	3.072 Gbps

OUTPUT POWER

Output Power per Band:	38 dBm (6.5 Watts) Cell/SMR 43 dBm (20 Watts) PCS 43 dBm (20 Watts) AWS
-------------------------------	---

REMOTE UNIT ENVIRONMENTAL SPECIFICATIONS

Outside Ambient	
Temp Rating:	-40°C to +50°C
Storage Temperature:	-40°C to +70°C
Humidity:	10% to 90% non-condensing
Lightning Protection:	20kA IEC 1000-45 8/30 µs Waveform

REMOTE UNIT

Enclosure:	IP-65
Mounting:	Wall, Pole, Inside Pole, Strand, and Vault
Dimensions (H x W x D):	29.38" x 16.45" x 15.6"
Volume:	3.66 Cubic Feet
Weight:	≤200 Pounds (No one component >80 lbs.)
Cooling:	Passive Convection
Optical Connectors:	Sealed Proax

HOST UNIT

Mounting:	19- and 23-inch rack
Dimensions (H x W x D):	5.25" x 19" x 19" (3 RUs)
Weight:	<25 Pounds

REMOTE UNIT POWER REQUIREMENTS

Power Supply:	100-240 VAC, 50-60 Hz
Battery Backup:	Yes (External)
Power Consumption:	~1000 Watts (Fully loaded 20 W doors)

HOST UNIT POWER REQUIREMENTS

Power Source:	24 to 48 VDC
Power Consumption:	~250 Watts (Fully loaded with 8 DARTs)

Element Management

Embedded EMS:	Yes
SNMP Based Management:	Yes

Note: Unless noted otherwise specifications are typical and subject to change

4/08 • 105502AE FlexWave™ Universal Radio Head

URH Host Unit Configuration Examples

Ordering Information

Description	Catalog Number
Host unit, one DART, 800 cell	FWU-20000000HU
Host unit, one 800 SMR and one 900 SMR DART	FWU-45000000HU
Host unit, one DART, 1900 PCS	FWU-80000000HU
Host unit, one DART, 2100 AWS	FWU-A0000000HU
Host unit, one 800 cell, one 1900 PCS DART	FWU-28000000HU
Host unit, one 800 cell, one 1900 PCS, one AWS DART	FWU-28A00000HU
Host unit, one 800 SMR, one 900 SMR, one 1900 PCS, one 2.5 WiMAX DART	FWU-458W0000HU
Host unit, one 800 SMR, one 900 SMR, one 1900 PCS DART	FWU-45800000HU

URH Remote Unit Configuration Examples

Ordering Information

Description	Catalog Number
800 cell A, 6.5W, single band, N/D, putty white, remote unit	FWU-2210000000111RU
1900 PCS, 20W, single band, diversity, putty white, remote unit	FWU-8420000000111RU
800/900 ESMR 6.5W N/D, 1900 PCS 20W N/D, putty white, remote unit	FWU-D218410000111RU
Three 1900 PCS, 20W, N/D, putty white, remote unit	FWU-8418418410111RU
2100 AWS, 20W, single band, N/D, putty white, remote unit	FWU-A410000000111RU
800/900 ESMR 6.5W N/D, 1900 PCS 20W N/D, 2.5 WiMAX 10W MIMO, putty white, remote unit	FWU-D21841W5M0111RU

SPEC SHEET



Website: www.adc.com

From North America, Call Toll Free: 1-800-366-3891 • Outside of North America: +1-952-938-8080

Fax: +1-952-917-3237 • For a listing of ADC's global sales office locations, please refer to our website.

ADC Telecommunications, Inc., P.O. Box 1101, Minneapolis, Minnesota USA 55440-1101

Specifications published here are current as of the date of publication of this document. Because we are continuously improving our products, ADC reserves the right to change specifications without prior notice. At any time, you may verify product specifications by contacting our headquarters office in Minneapolis. ADC Telecommunications, Inc. views its patent portfolio as an important corporate asset and vigorously enforces its patents. Products or features contained herein may be covered by one or more U.S. or foreign patents. An Equal Opportunity Employer

105502AE 4/08 Revision © 2008 ADC Telecommunications, Inc. All Rights Reserved

Free Manuals Download Website

<http://myh66.com>

<http://usermanuals.us>

<http://www.somanuals.com>

<http://www.4manuals.cc>

<http://www.manual-lib.com>

<http://www.404manual.com>

<http://www.luxmanual.com>

<http://aubethermostatmanual.com>

Golf course search by state

<http://golfingnear.com>

Email search by domain

<http://emailbydomain.com>

Auto manuals search

<http://auto.somanuals.com>

TV manuals search

<http://tv.somanuals.com>