

# InterReach® Wireless Repeaters

Mobile TV In-Building Repeater



ADC's new Mobile TV forward link only (FLO) wireless repeater is a cost-effective solution to enhance indoor coverage for small to medium-size environments. These simple-to-use devices are optimal for augmenting mobile TV service coverage in small indoor facilities such as retail stores. These repeaters feature a compact design, blend easily into any facility, and are easy to set up through a simple GUI interface.

## Benefits:

- Easy installation
- User-friendly GUI interface includes gain adjustment, system test and calibration features
- Excellent selectivity — IF SAW filters to mitigate interference
- Provides product performance status via LED lights
- Low maintenance RF repeater system — 'set it and forget about it'

SPEC SHEET



[www.adc.com](http://www.adc.com) • +1-952-938-8080 • 1-800-366-3891



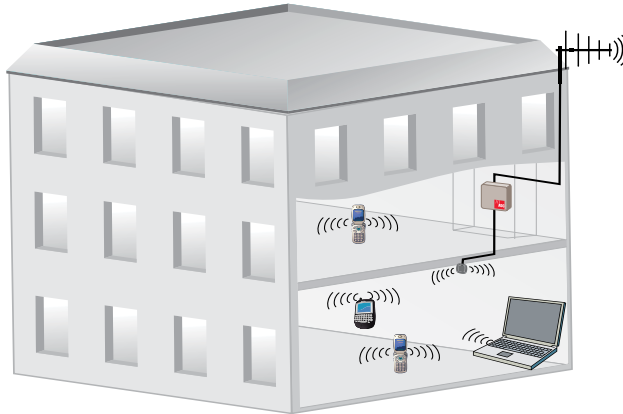
# InterReach® Wireless Repeaters

## Mobile TV In-Building Repeater

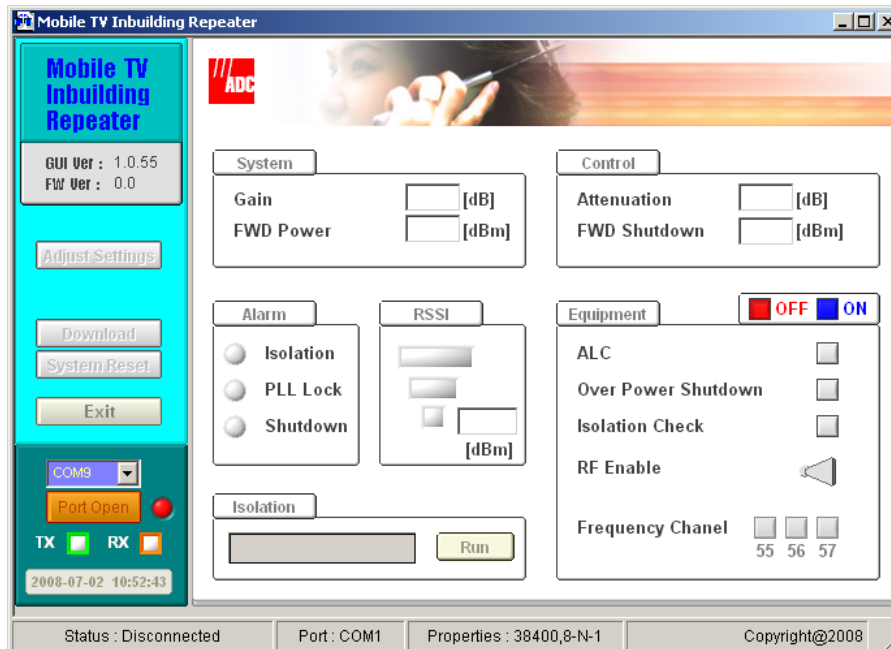
### System Description

The repeater transmits RF in the forward path to provide indoor wireless coverage. The repeater is connected via coax to a donor antenna that is typically located on a rooftop or external wall of a building, directed at the donor site. The repeaters are mounted inside the building and distributes the RF over coax to a service antenna located in the desired coverage area.

### Typical Installations



### Set-up, Alarm and Management



8 / 0 8 • 1 0 6 2 9 0 A E InterReach® Wireless Repeaters



# InterReach® Wireless Repeaters

## Mobile TV In-Building Repeater

8/08 • 106290AE InterReach® Wireless Repeaters

### GUI Features

#### Automatic Level Control (ALC)

The system will control the output power to maintain the stability and protect the unit.

#### RSSI Indicator

Optimize and ease donor antenna placement during installation.

#### Isolation Check

The device offers an isolation check configurable in the GUI when the system is set up and powered on.

#### User-friendly Interface

USB connection allows you to control:

- adjust gain
- perform system test and calibration

#### Over Power Shut Down

The system can detect excessive power and will shut down after 5 seconds to protect the unit. Recheck occurs after 5 minutes and the system will automatically resume operation when normal power levels are reached.

## Typical Specifications

### RF SPECIFICATION

<b>Operating Frequency for the 700 MHz</b>	6 MHz channel selective
<b>Down Link:</b>	716-722 MHz (ch 55), 722-728 (ch 56), 728-734 (ch 57)
<b>Output Power:</b>	+13 dBm
<b>Gain:</b>	80 dB
<b>Flatness:</b>	±2 dB Full Band
<b>Out of Band Gain:</b>	65 dB Offset 1 MHz; 55 dB Offset 5 MHz

### NOISE FIGURE

<b>Up Link:</b>	5 dB max
<b>VSWR:</b>	1.5 max
<b>Frequency Stability:</b>	±0.05 ppm max
<b>ALC:</b>	20 dB min
<b>Gain Control Range:</b>	30 dB min; .5 dB Step
<b>Delay:</b>	5 usec max
<b>Supply Voltage:</b>	6 V
<b>Current Consumption:</b>	AC 110~220V to DC 6V SMPS Adaptor 3A max DC 6V Current Consumption

### ENVIRONMENTAL

<b>Operating Temperature:</b>	-5°C ~ +40°C
<b>Humidity</b>	85%

### INDICATORS/CONTROLS

<b>USB Port:</b>	Gain, system test, calibration
<b>LED:</b>	
<b>TX Shutdown:</b>	Off (normal operation), red (alarm)
<b>Isolation:</b>	Yellow flashing (test), solid yellow (alarm)
<b>DC Power:</b>	Green (normal operation)
<b>RSSI Indicator:</b>	Thresholds measured at donor port No LED <-105 dBm input 1 LED >-105 dBm input 2 LED >-95 dBm input 3 LED >-85 dBm input

### PHYSICAL

<b>Donor Antenna:</b>	N Type Female
<b>Service Antenna:</b>	N Type Female
<b>Dimensions (WxHxD):</b>	150x200x67 mm (5.9x7.8x2.6 in.) including wall mount bracket
<b>Weight:</b>	1.79 kg (3.95 lbs.)
<b>Mounting or Installation:</b>	Wall mount

## Ordering Information

Description	Catalog Number
<b>Mobile TV FLO Repeater;</b> 700 MHz Ch 55, 56, or 57, 13 dBm, 80 dB gain and accessory kit. Accessories include: A to A USB cable, mounting plate, 6V power supply, software and user doc.	RPT-MAAAA11000

Donor antennas, service antennas, coax and other accessory materials are also available from ADC.

SPEC SHEET



### Website: [www.adc.com](http://www.adc.com)

From North America, Call Toll Free: 1-800-366-3891 • Outside of North America: +1-952-938-8080

Fax: +1-952-917-3237 • For a listing of ADC's global sales office locations, please refer to our website.

ADC Telecommunications, Inc., P.O. Box 1101, Minneapolis, Minnesota USA 55440-1101

Specifications published here are current as of the date of publication of this document. Because we are continuously improving our products, ADC reserves the right to change specifications without prior notice. At any time, you may verify product specifications by contacting our headquarters office in Minneapolis. ADC Telecommunications, Inc. views its patent portfolio as an important corporate asset and vigorously enforces its patents. Products or features contained herein may be covered by one or more U.S. or foreign patents. An Equal Opportunity Employer

106290AE 8/08 Original © 2008 ADC Telecommunications, Inc. All Rights Reserved

## Free Manuals Download Website

<http://myh66.com>

<http://usermanuals.us>

<http://www.somanuals.com>

<http://www.4manuals.cc>

<http://www.manual-lib.com>

<http://www.404manual.com>

<http://www.luxmanual.com>

<http://aubethermostatmanual.com>

Golf course search by state

<http://golfingnear.com>

Email search by domain

<http://emailbydomain.com>

Auto manuals search

<http://auto.somanuals.com>

TV manuals search

<http://tv.somanuals.com>