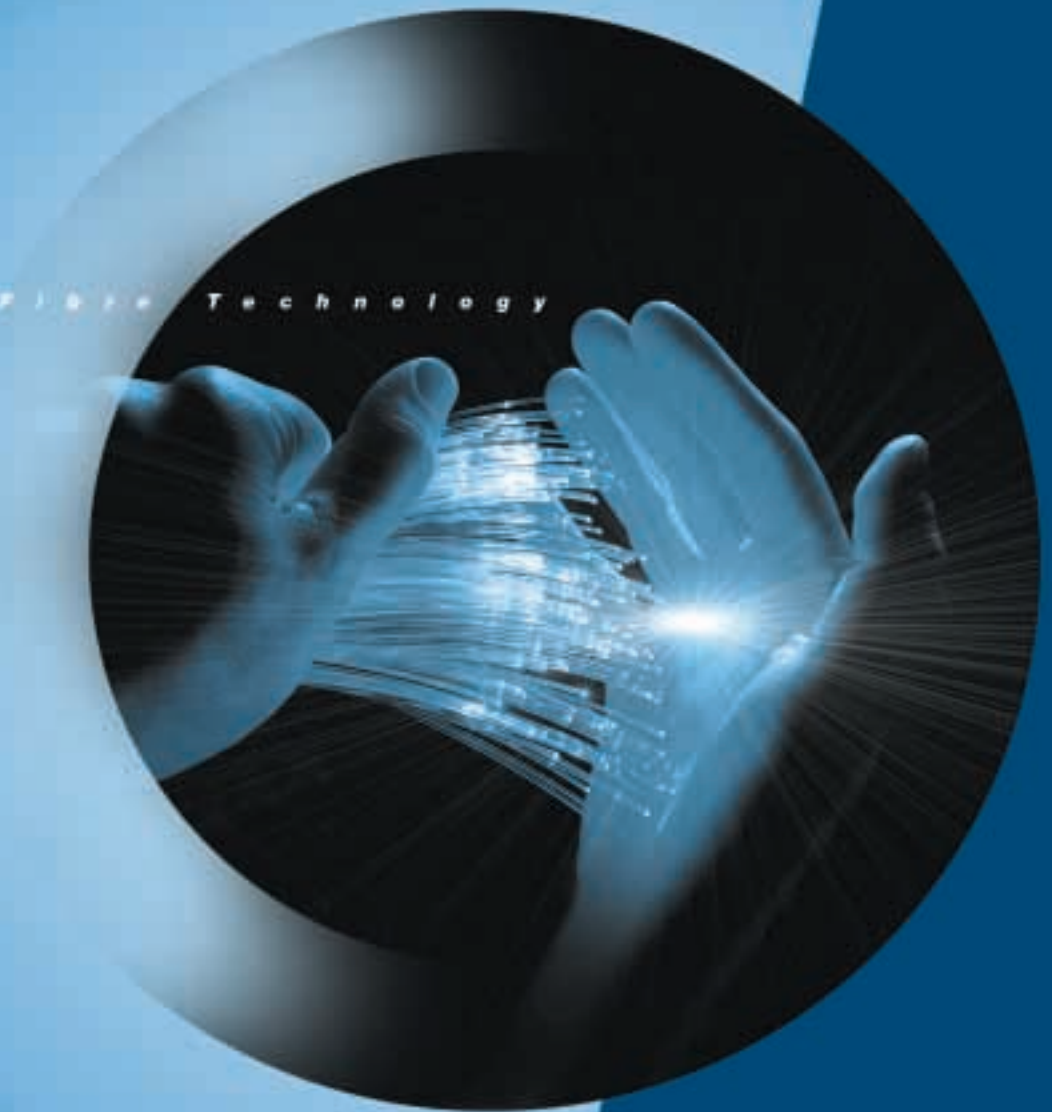
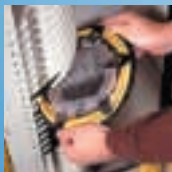
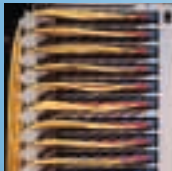




ADC FIBRE ETSI SOLUTIONS

OPTIMIZING THE VALUE OF YOUR OPTICAL NETWORK

ADC Fibre Technology



ADC:
The leader
in fibre
technology



There is **nothing** simple about **networking** in today's global market.

Success in today's global communications market means:

- Maximizing revenue
- Reducing cost
- Staying responsive to the market

As competition continues to intensify, the hallmarks of successful global networks are:

- Flexibility
- Reliability
- High bandwidth
- Low cost

Today's successful global networks utilize large amounts of fibre, the medium that meets these stringent requirements.



Fibre Cable Management: The Key to Unlocking the Competitive Advantages of Fibre.

A successful fibre network requires a strong fibre cable management system.

The management of the fibre cables has a direct impact on

- Network reliability
- Performance
- Cost

Fibre cable management also directly affects

- Network maintenance and operations
- Ability to reconfigure and expand your network
- Ability to restore service
- Ability to implement new services quickly

By incorporating proper cable management, your fibre network can deliver its full competitive advantage.



ADC: The Fibre Cable Management Experts



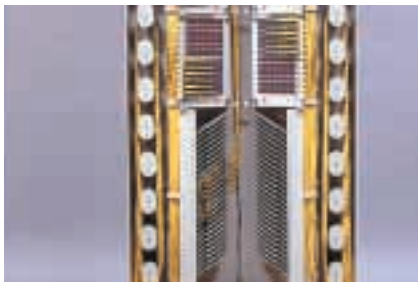
ADC Fibre Systems

- Created for longevity and low life-cycle cost
- Designed for fast and easy installation
- Engineered for easy expansion and for cost-effective upgrades
- Provide simplified monitoring, management and repair
- Centralized control lets you maintain complex, extended networks

ADC's fibre solutions are designed to provide superior cable management through:

- Bend radius protection
- Cable routing paths
- Cable accessibility
- Physical protection of the fibre network

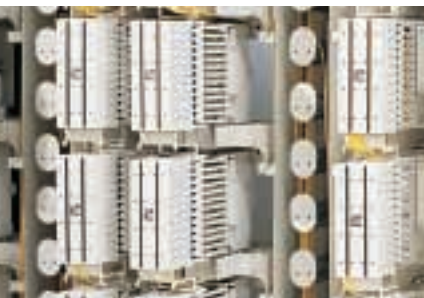
ADC Cable Management Solutions



OMX

ADC's newest ETSI frame solution

- 900mm X 300mm footprint or 600mm X 300mm footprint
- Total front-facing solution
- Modular solution for a variety of termination, splicing and storage applications



NGF

ADC's premier fibre cable management solution

- 600mm X 600mm footprint
- Maximized termination density
- Innovative cable routing system

FL2000

ADC's 48.26cm panel product line

- Complete line of modular fibre panels and boxes that can be cabinet, rack or wall mounted
- Designed specifically for the 48.26cm environment
- Fully adaptable for large or small distribution frame applications





FiberGuide® Fibre Management System:

Robust troughing system for fibre patch cord and cable assembly management.

- Maintains 5cm minimum bend radius
- Assures total off-frame protection of the fibre cable plant
- Provides easy access to the fibre

ADC Cable Management Accessories

Value Added Modules:

Incorporate optical components, such as splitters, wavelength division multiplexers (WDMs), variable attenuators, and optical switches, to provide access to the optical layer.

- Add flexibility and functionality to the optical transport system
- Fit all existing ADC fibre distribution frames and various other mounting environments



Optical Components

As demands for network reliability grow, the consistency and reliability of components become increasingly important. ISO 9001 standards and statistical process control help keep ADC's passive and active optical components within strict specifications, not just within lots but over the life of the product. ADC's optical component family includes:

- splitters
- couplers
- isolators
- collimators
- wavelength division multiplexers
- dense WDMs
- 980nm semiconductor pump laser module



Fibre Cable Assemblies and Components

ADC manufactures a wide variety of fibre components, all of which meet the strictest specifications in the industry.

- patch cords/pigtails
- attenuators
- tracer cords
- connectors
- adapters
- intrafacility cable assemblies
- multi-fibre assemblies

ADC –

- The leader in fibre cable management solutions
- Complete ETSI product portfolio
- Worldwide, second-to-none customer support

ADC Fibre ETSI Solutions:
Optimizing the value of your network.





ADC Telecommunications, Inc.
P.O. Box 1101
Minneapolis, Minnesota 55440-1101

FAX: (612) 946-3292

From North America, Call Toll Free: 1-800-366-3891, Ext. 3475

Outside of North America: 612-938-8080

Home Page Address: <http://www.adc.com>

International Sales Offices:

United Kingdom +44-1189-879-200 • Brussels, Belgium +32-2-712-6500 • Dusseldorf, Germany +49-211-530-655-0 • Madrid, Spain +34-91-361-01-68 • Johannesburg, South Africa +27-11-655-7082 • Moscow, Russia +7-095-333-5022 • Budapest, Hungary +36-1-319-7103
Paris, France +33-1-55-68-10-59 • North Sydney, Australia +61-2-9954-4803 • Singapore +65-225-8228 • Canberra, Australia +61-26-206-2222
Shanghai, China +86-21-6375-8908 • Beijing, China +86-10-6418-1980 • Tokyo, Japan +81-3-5793-7570 • Seoul, Korea +82-2-333-8989
Malaysia +60-3-460-8686 • Bangkok, Thailand +66-2-9595199 • Sao Paulo, Brazil +55-11-3040-0666 • Mexico City, Mexico +52-5-658-9620
Caracas, Venezuela +58-2-286-1444 • Buenos Aires, Argentina +54-114-788-8700 • Miami Lakes, FL (Caribbean/Miami) +1-305-231-8742

Specifications published here are current as of the date of publication of this document. Because we are continuously improving our products, ADC reserves the right to change specifications without prior notice. At any time, you may verify product specifications by contacting our headquarters office in Minneapolis. ADC Telecommunications, Inc. views its patent portfolio as an important corporate asset and vigorously enforces its patents. Products or features contained herein may be covered by one or more U.S. or foreign patents.

Free Manuals Download Website

<http://myh66.com>

<http://usermanuals.us>

<http://www.somanuals.com>

<http://www.4manuals.cc>

<http://www.manual-lib.com>

<http://www.404manual.com>

<http://www.luxmanual.com>

<http://aubethermostatmanual.com>

Golf course search by state

<http://golfingnear.com>

Email search by domain

<http://emailbydomain.com>

Auto manuals search

<http://auto.somanuals.com>

TV manuals search

<http://tv.somanuals.com>