

## ProPatch® Miniature Series

Super High-Density Coax Patching System



The ProPatch® Miniature (PPM) Series is an all new Super High-Density Coax (SHDC) patching system designed for High Definition (HD), SDI, AES audio, 5.1 and 7.1 audio applications where coax medium is preferred but space is at a premium. The system is available in both 1 and 1.5 rack unit configurations. The 1 rack unit panel features a patent-pending pullout designation strip that dramatically increases space for text, and a high-density 2x48 circuit configuration of ports. The 1.5 rack unit panel features 4x48 ports.

The new SHDC jack features a unique patent-pending switchable termination system that allows the user to select terminating and non-terminating 75  $\Omega$  functions on each circuit pair. The normal-through system is also available in a straight-through configuration for tie-line panels and applications where normals are not required. The SHDC high-performance normalling and straight-through LCC jacks are rated to SMPTE 424M HD standard. The SHDC AES jacks are rated for AES digital audio and analog video transmission. Both versions feature modular screwless mounting, circuit identification icons on the rear of the jack, 10,000 insertion/withdrawal cycles and are fully qualified to MIL-STD 202 for the ultimate in durability.

The system features two options. ADC's patented push-pull LCC connector technology on the backplane, or standard 1.0/2.3 connectors and ADC's patented LCC and LCP connectors terminate like a BNC using standard tooling.

SPEC SHEET



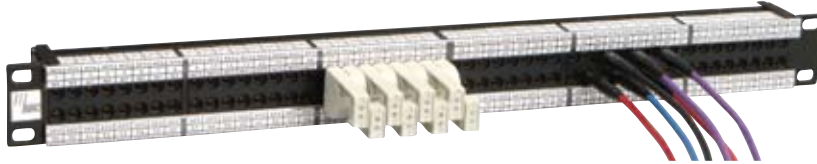
[www.adc.com](http://www.adc.com) • +1-952-938-8080 • 1-800-366-3891



# ProPatch® Miniature Series

## Super High-Density Coax Patching System

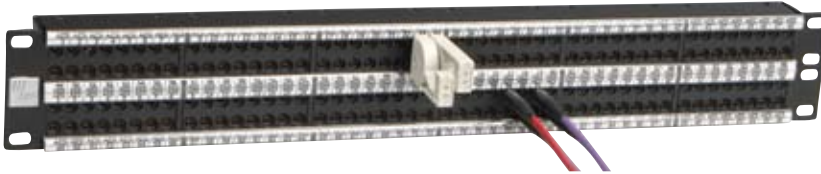
### 1 Rack Unit Super High-Density Coax Patch Panel



#### Features:

- High-density: 48 total jacks (2x48)
- Large designation strips: .440" wide designation on top and bottom; plus a 1" slide out designation
- Lightweight: Less than 1 Kg (2 lbs) total panel weight

### 1.5 Rack Unit Super High-Density Coax Patch Panel



#### Features:

- High-density: 96 total jacks (4x48)
- Large designation strips: .440" wide middle designation, .289" on top and bottom
- Lightweight: Less than 1.8 Kg (3.8 lbs) total panel weight

5/08 • 105548AE ProPatch® Miniature Series (SHDC)



# ProPatch® Miniature Series

## Super High-Density Coax Patching System

### 1.5 Rack Unit Super High-Density Coax Patch Panel



#### Features:

- High-density: 48 total jacks (2x48)
- Large designation strips: .680" designation on top and bottom
- Lightweight: Less than 1.4 Kg (3 lbs) total panel weight

### SHDC Jack

#### Features:

- Switchable between terminating and non-terminating normalled-through
- Non-normalled jack offered in same jack housing, looping plug available for circuit patching

	Normalling AES	Straight-Through HD	Normalling HD
LCC	SHDC-LCC 	SHDC-LCC-NN 	SHDC-LCC-HP 
	SHDC-1023 	SHDC-1023-NN 	SHDC-1023-HP 
1.0/2.3			

5/08 • 105548AE ProPatch® Miniature Series (SHDC)



# ProPatch® Miniature Series

## Super High-Density Coax Patching System

### Specifications

#### ELECTRICAL

<b>Characteristic impedance:</b>	75 Ω
<b>Voltage rating:</b>	600 Volts RMS
<b>Bandwidth</b>	
<b>HD LCC:</b>	Up to 3 GHz
<b>HD 1.0/2.3:</b>	Up to 1.0 GHz
<b>Straight-through LCC:</b>	Up to 3 GHz
<b>Straight-through 1.0/2.3:</b>	Up to 1.0 GHz
<b>AES:</b>	Up to 500 MHz
<b>Contact resistance:</b>	.030 Ω max change post environmental
<b>Insulation resistance:</b>	200 MΩ min change

#### MECHANICAL

<b>Mechanical durability:</b>	10,000 cycles min (Front port: LCP) 500 cycles min (Back port: LCC)
<b>Center contact retention:</b>	6 lbs min
<b>SHDC jack panel retention:</b>	20 lbs min
<b>Patch cord cable bend and twist:</b>	500 cycles min

#### ENVIRONMENTAL

<b>Thermal shock:</b>	-40°C to 65°C, operating; -55°C to 85°C, non-operating
<b>Moisture resistance:</b>	0% to 95%; MIL-STD-202 Method 106
<b>Corrosion (salt spray):</b>	MIL-STD-202 Method 101, test condition B
<b>Flammability:</b>	UL 94-VO rated (center conductor insulator)
<b>Vibration:</b>	MIL-STD-202 Method 201
<b>Solvent resistance:</b>	MIL-STD-202 Method 215

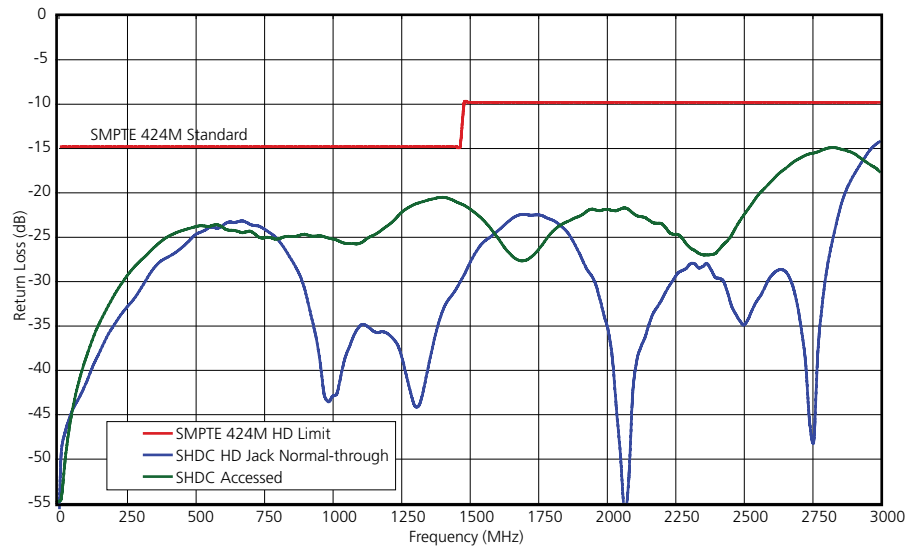
#### FINISH

<b>Sheet metal panel:</b>	.060 CRS with protective black finish
<b>Jack plastic housing:</b>	30% Glass Filled Valox
<b>Nickel coax housings:</b>	Tarnish-resistant electroless nickel plating
<b>Springs:</b>	Beryllium copper with 50 millionths inch gold plating
<b>Center conductors:</b>	50 millionths inch gold plating

ProPatch® Miniature Series (SHDC)

5/08 • 105548AE

**Gated Return Loss  
High-Performance SHDC LCC Jack**





# ProPatch® Miniature Series

## Super High-Density Coax Patching System

5/08 • 105548AE ProPatch® Miniature Series (SHDC)

### Ordering Information

Description					Catalog Number
<b>ProPatch® Miniature Panels</b>					
2x48	1 RU	LCC	Normalling	AES and Analog Video	PPM1248-LCC-BK
				High-Performance, HD	PPM1248-LCCHP-BK
			Non-Normalling	High-Performance	PPM1248-LCCNN-BK
		1.0/2.3 jack	Normalling	AES and Analog Video	PPM1248-1023-BK
				High-Performance, HD	PPM1248-1023HP-BK
			Non-Normalling	High-Performance	PPM1248-1023NN-BK
	1.5 RU	LCC	Normalling	AES and Analog Video	PPM15248-LCC-BK
				High-Performance	PPM15248-LCCHP-BK
			Non-Normalling	High-Performance	PPM15248-LCCNN-BK
		1.0/2.3 jack	Normalling	AES and Analog Video	PPM15248-1023-BK
				High-Performance	PPM15248-1023HP-BK
			Non-Normalling	High-Performance	PPM15248-1023NN-BK
4x48	1.5 RU	LCC	Normalling	AES and Analog Video	PPM15448-LCC-BK
				High-Performance	PPM15448-LCCHP-BK
		Non-Normalling	High-Performance	PPM15448-LCCNN-BK	
			1.0/2.3 jack	Normalling	AES and Analog Video
	High-Performance	PPM15448-1023HP-BK			
	Non-Normalling	High-Performance		PPM15448-1023NN-BK	



1 RU 2x48 PPM Panel



1.5 RU 2x48 PPM Panel



1.5 RU 4x48 PPM Panel



# ProPatch® Miniature Series

## Super High-Density Coax Patching System

5/08 • 105548AE ProPatch® Miniature Series (SHDC)



LCC Jack

### Ordering Information

Description			Catalog Number
<b>Super High-Density Coax Jacks</b>			
LCC	Normalling	AES and Analog Video	SHDC-LCC
		High-Performance, HD	SHDC-LCC-HP
	Straight-Through	High-Performance, HD	SHDC-LCC-NN
1.0/2.3 connectors	Normalling	AES and Analog Video	SHDC-1023
		High-Performance	SHDC-1023-HP
	Straight-Through	High-Performance	SHDC-1023-NN



LCP Patch Cords

### Ordering Information

Description	Catalog Number
<b>LCP High-Performance Patch Cords</b>	
2 feet	BK2VXM-LCP-LCP
3 feet	BK3VXM-LCP-LCP
4 feet	BK4VXM-LCP-LCP
6 feet	BK6VXM-LCP-LCP



LCP Looping Plug

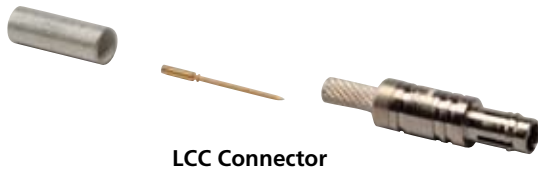
### Ordering Information

Description	Catalog Number
Looping plug; LCP .48" Centers	LP-SHDC-480



# ProPatch® Miniature Series

## Super High-Density Coax Patching System



LCC Connector



LCC Connectors Bulk Pack

### Ordering Information

Description	Catalog Number			
	Cable Type (or equivalent to)			
	1505, 9259 9100, VPM2000	1855 VDM230 VDM250	0.6/2.8 Image360 SDV-25	179DT
<b>LCC Connectors</b>				
1 each	LCC-1-BE	LCC-13-BE	LCC-26-BE	LCC-31-BE
bulk (100 pack)	LCC-1B-BE	LCC-13B-BE	LCC-26B-BE	LCC-31B-BE
<b>Crimp Tools</b>				
Features ergonomic handle for ADC die sets	WT-2			
Features long ergonomic handle for ADC die sets	WT-3			
<b>Crimp Die Sets</b>				
	WD-1	WD-2	WD-3	WD-2
	WD-2		WD-4	
	WD-3			
	WD-5			
<b>Manual Stripper Tool</b> Includes One Stripper Replacement Cassette				
	STC-12B	STC-13B	STC-13B	STC-13B
<b>Manual Stripper Replacement Cassette</b>				
	CCS-BLK			
<b>Automatic Cable Stripper Tool</b>				
	BNC-S1			
<b>Cutter Head For Automatic Cable Stripper Tool</b>				
	BNC-H2	BNC-H5	BNC-H5	BNC-H5
<b>Insertion/Withdrawal Tool</b>				
	LCA-400004			
<b>Replacement Tips</b> For Insertion/Withdrawal Tool (12-Pack)				
	LCA-400005-12			
<b>LCC Tester</b>				
	LCA-414001			



Insertion/Withdrawal Tool

5/08 • 105548AE ProPatch® Miniature Series (SHDC)

SPEC SHEET



**Website: [www.adc.com](http://www.adc.com)**

From North America, Call Toll Free: 1-800-366-3891 • Outside of North America: +1-952-938-8080

Fax: +1-952-917-3237 • For a listing of ADC's global sales office locations, please refer to our website.

ADC Telecommunications, Inc., P.O. Box 1101, Minneapolis, Minnesota USA 55440-1101

Specifications published here are current as of the date of publication of this document. Because we are continuously improving our products, ADC reserves the right to change specifications without prior notice. At any time, you may verify product specifications by contacting our headquarters office in Minneapolis. ADC Telecommunications, Inc. views its patent portfolio as an important corporate asset and vigorously enforces its patents. Products or features contained herein may be covered by one or more U.S. or foreign patents. An Equal Opportunity Employer

**105548AE 5/08 Revision © 2008, 2007 ADC Telecommunications, Inc. All Rights Reserved**



## Free Manuals Download Website

<http://myh66.com>

<http://usermanuals.us>

<http://www.somanuals.com>

<http://www.4manuals.cc>

<http://www.manual-lib.com>

<http://www.404manual.com>

<http://www.luxmanual.com>

<http://aubethermostatmanual.com>

Golf course search by state

<http://golfingnear.com>

Email search by domain

<http://emailbydomain.com>

Auto manuals search

<http://auto.somanuals.com>

TV manuals search

<http://tv.somanuals.com>