

ACCUSPLIT[®] healthengine™ AH120MAG

ACTIVITY Pedometer OPERATING INSTRUCTIONS

Congratulations on taking the first step to wellness with your purchase of an ACCUSPLIT healthengine pedometer. It's easy to set up your new pedometer. Just follow the steps below, and start walking!

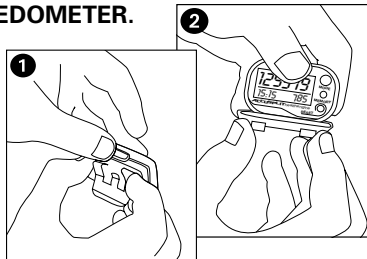
AH120MAG FEATURES:

- Outstanding accuracy
- MAGNUM display with very large digits
- Sturdy metal clip
- Records up to 999,999 steps, then rolls over back to zero

USING YOUR Pedometer

HOW TO OPEN YOUR Pedometer.

See diagrams at right.

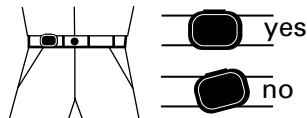


WEARING YOUR Pedometer

While gently holding the metal belt clip open, slide the pedometer onto your belt or the top edge of your pants or skirt. It should fit snugly and level, above one knee.

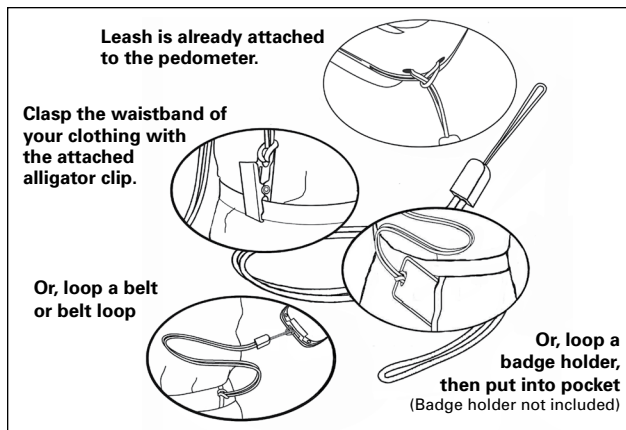
Note: the pedometer should be as vertical as possible. Walkers with larger stomachs may find it helpful to wear the pedometer farther back on the body, toward one hip.

The cover must be closed for the pedometer to work.



SAFETY LEASH

This pedometer comes with a free safety leash, to help prevent accidental loss. The leash comes pre-attached to the pedometer. To use the leash, simply clasp the waistband of your clothing with the attached alligator clip. You can also use a safety pin to fasten the leash to your clothing, loop the leash through your belt or belt loop, or use a badge holder.



DISPLAY MODES

- STEPS: Counts steps taken since last RESET. Reset daily to count each day's steps.



VIEWING YOUR RESULTS

Once you put on your pedometer with the cover closed, it will automatically begin to record your steps.

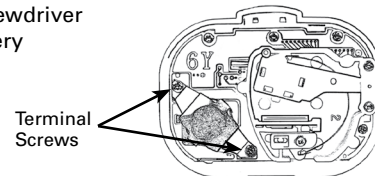
RESETTING YOUR Pedometer

Most people prefer to reset step counts daily. To reset: Press and hold yellow RESET button for at least two seconds to reset to zero.

REPLACING THE BATTERY

When the display starts to dim or goes blank, it is time to replace the battery. Your pedometer uses one Type LR43 (L1142) 1.5 volt alkaline battery. You'll need a jeweler's screwdriver set to change the battery. To replace:

1. Insert a coin into the slot on the bottom of the case, and twist counter-clockwise to loosen the case front. Lift case front away.
2. Use a jeweler's screwdriver to remove the battery terminal screws.



3. Replace with a new battery. The battery's positive (+) terminal should be FACE UP while you put it into the pedometer.
4. Align case front over the pedometer and press gently to snap cover back into place, starting with top.

REGISTER NOW Please return your AH120MAG Registration to the Repair Center address in the warranty, and we will let you know about future products.

Email (preferred) _____
User _____

NO-PROOF-OF-PURCHASE LIMITED WARRANTY
Free service for first year of ownership;
\$12 fee for service thereafter. See label inside unit for date.
See www.accusplit.com/support for details.

Eat Right! Walk More! Live Well!
The ACCUSPLIT Lifestyle

ACCUSPLIT, Inc. • 3090 Independence Drive, Suite 148 • Livermore, CA 94551 USA
800-935-1996 • 925-290-1900 • FAX 925-290-1930 • www.ACCUSPLIT.com • support@ACCUSPLIT.com

990-005A

Free Manuals Download Website

<http://myh66.com>

<http://usermanuals.us>

<http://www.somanuals.com>

<http://www.4manuals.cc>

<http://www.manual-lib.com>

<http://www.404manual.com>

<http://www.luxmanual.com>

<http://aubethermostatmanual.com>

Golf course search by state

<http://golfingnear.com>

Email search by domain

<http://emailbydomain.com>

Auto manuals search

<http://auto.somanuals.com>

TV manuals search

<http://tv.somanuals.com>