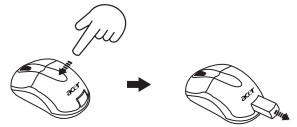


Acer Wireless Mouse

Quick Installation Guide

1. Hiding/Removing the Receiver:

To hide the receiver, slide it into the rear door of the mouse.
To release the receiver, press the rear button.

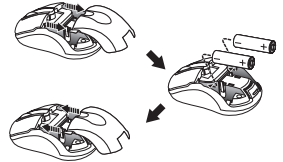


2. Battery Installation:

Step 1: Push and lift to open the battery cover.

Step 2: Install the batteries in the battery compartments. Make sure that the polarities of the batteries match those indicated in the battery compartments when you install.

Step 3: Install the battery cover back on the mouse.



Note: After replacing batteries, please refer to Section 2 - Installing and Activating the Mouse to re-establish the wireless connection.

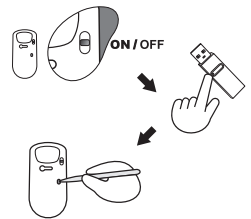
3. Installing and Activating the Mouse

Step 1: To ensure correct operation, please make sure that the wireless USB mini receiver is properly installed at least 20 cm (8 inches) away from electromagnetic devices such as monitors or speakers. Also please make sure that the wireless USB mini receiver is installed at least no more than 10 meters away from the mouse.

Step 2: Push the Power Switch on the mouse to the ON position.

Step 3: Have a paper clip, pen, toothpick or other pointed object ready.

Step 4: To begin activation, first press the Connect button on the receiver. Use a pointed object to press the Connect button located on the bottom of the mouse within 10 seconds.



Note:

- The receiver may not function properly if placed on or near a metal surface.
- If the mouse does not turn-on, please repeat Step 4.
- It is necessary to repeat Step 4 after any loss of power from battery replacement.

4. Power-saving Modes for Mouse:

- If not manually powered OFF, the mouse will go into automatic sleep mode when not used for 6-10 minutes.
- Push the Power switch on the mouse to the OFF position.

5. Trouble Shooting:

If you experience problems setting up your Wireless Optical Mouse, please check the following:

1. Check that the batteries are loaded correctly and are fully charged.
2. Check that the battery cover is properly secured.
3. Check that the wireless receiver is connected to your computer correctly.
4. Please make sure the wireless mouse and receiver have been activated as described in Section 2-Installing and Activating the Mouse.
5. Be sure that the optical mouse is not being used on metallic or glass surfaces as the optical sensor may not function correctly.
6. Please make sure that the receiver is installed at least 20 cm (8 inches) away from other electronic devices (such as monitors or speakers) and no more than 100 cm (3.3 feet) away from where the mouse will be used.

Important Health Information

Certain repetitive strain injuries, including pain, numbness, and weakness to hands, wrists, arm, neck and/or back have been identified by some experts as being associated with the prolonged use of a mouse. If you experience injury symptoms, consult a medical professional. A person's susceptibility to these injuries may be affected by many factors including body posture, repetitive physical activities and general physical health.



Free Manuals Download Website

<http://myh66.com>

<http://usermanuals.us>

<http://www.somanuals.com>

<http://www.4manuals.cc>

<http://www.manual-lib.com>

<http://www.404manual.com>

<http://www.luxmanual.com>

<http://aubethermostatmanual.com>

Golf course search by state

<http://golfingnear.com>

Email search by domain

<http://emailbydomain.com>

Auto manuals search

<http://auto.somanuals.com>

TV manuals search

<http://tv.somanuals.com>