



USB Home DSL Modem

User Manual

Table of Contents

1 Introduction	1
Package Contents	1
Minimum System Requirements	2
Technical Support	2
Modem Features	3
2 Setting Up the Modem	5
Connecting a Computer to the Modem	5
Configuring the Modem	13
3 Using the Home DSL System Monitor	21
Home DSL Manager Icon	21
Home DSL Monitor	22
4 Troubleshooting and FAQs	27
A Reference	29
Locating Computer Information	29
Locating Windows Operating System Files	30
B Specifications	33
General	33
LED Indicators	33
Environmental	34
C Glossary	35
Notices	39
Regulatory Compliance Notices	39
Modifications	39
Limited Warranty	41

Introduction

1

Thank you for purchasing the *Actiontec* USB Home DSL Modem. The Modem provides connection speeds up to 125 times faster than a standard 56K modem. This easy-to-set-up, easy-to-use product is perfect for the home computer user. If you want to dramatically accelerate your Internet connection and take your computing to the next level, the *Actiontec* USB Home DSL Modem is one of the keys to your success.



Package Contents

- *Actiontec* USB Home DSL Modem
- Power adapter
- DSL cable
- USB cable
- Phone filters
- Installation CD (includes user manual)
- Quick start guide
- Warranty and registration card

Minimum System Requirements

- Active DSL service
- Computer with a USB connection
- Microsoft Windows 98, Windows 98 Second Edition (SE), Windows Millennium Edition (Me), Windows 2000, Windows XP
- Internet Explorer 4.0 or higher (5.x recommended) or Netscape Navigator 4.0 or higher (4.7 recommended)

Technical Support

Actiontec Electronics prides itself on making durable, high-quality, high-performance products. If you need assistance, the *Actiontec* Technical Support Department is available 24 hours a day, every day, to provide professional support.

Actiontec[™]

Actiontec Electronics, Inc.

760 N. Mary Avenue
Sunnyvale, CA 94085

Technical Support

Phone: 888.436.0657

E-mail: techsupp@actiontec.com

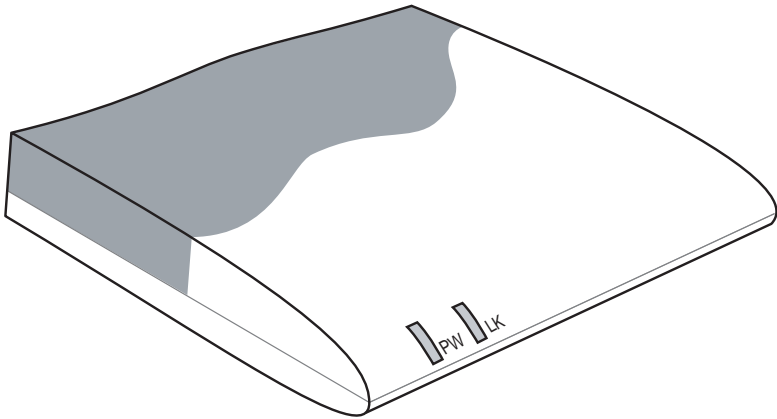
Internet: www.actiontec.com/support

Modem Features

The Modem features two LEDs (lights) on its front panel, and series of ports on its rear panel. We recommend the user become familiar with these features before installing or setting up the Modem.

Front Panel

There are two LEDs (light emitting diodes, or lights) on the front panel of the Modem, as shown in the figure, below.



PWR LED

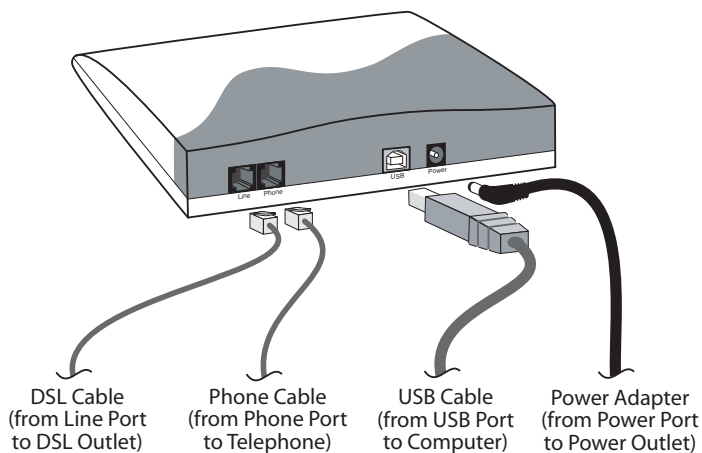
The PWR (Power) LED glows green when power is supplied to the Modem. When it flashes, the Modem is going through its initialization process.

LK LED

The LK (Link) LED glows green when the DSL connection is active. When it blinks, data is traveling across the connection

Rear Panel

The Modem has four ports on its rear panel: **Line**, **Phone**, **USB**, and **Power**.



Line Port

The Line port is used to connect the Modem to the DSL outlet.

Phone Port

The Phone port is used to connect a telephone to the Modem.

USB Port

The USB port is used to connect the Modem to a computer.

Power Port

The Power port is used to connect the Modem's power adapter to a wall outlet.

Setting Up the Modem

2

Setting up the Modem involves two basic steps: connecting a computer to the Modem, and configuring the Modem to activate the DSL connection and load the software drivers.

Connecting a Computer to the Modem

The instructions in this section parallel the steps contained in the *Actiontec Installation Buddy™*, which provides a visual guide to connecting the Modem to a computer and installing phone filters. It is recommended the user run the Installation Buddy first, before attempting any other procedures.

To connect the Modem to a computer:

1. Insert the *Actiontec Installation Buddy* CD-ROM in the CD-ROM drive of the computer. The Installation Buddy will start automatically. Wait until the following screen appears in your Internet browser window, read the onscreen instructions, then click **Next**.



- The next window appears. Get the **Modem, Power Cord, USB Cable, DSL Cable**, and **Clear Bag** from the **Quick Start Kit**, then click **Next**.



- The next window appears. Place the Modem upright in its stand, then click **Next**.



- The next window appears. Take the gray **Power Cord** and plug the smaller end into the **Power Port** on the rear panel of the Modem. Click **Next**.



Chapter 2 Setting Up the Modem

5. The next window appears. Plug the larger end of the **Power Cord** into a **Power Outlet** in a wall, then click **Next**.



6. When the next window appears, confirm the **PW (Power) Light** on the front of the Modem glows solid **green, orange, or red**. Click **Next**.



7. Another window appears. Plug one end of the **gray DSL Cable** into the **Line Port** on the rear panel of the Modem, then click **Next**.



- When the next window appears, plug the other end of the DSL Cable into the **Wall Jack** closest to your computer, then click **Next**.



- The next window appears. Plug the square end of the **beige USB Cable** into the **USB Port** on the rear panel of the Modem, then click **Next**.



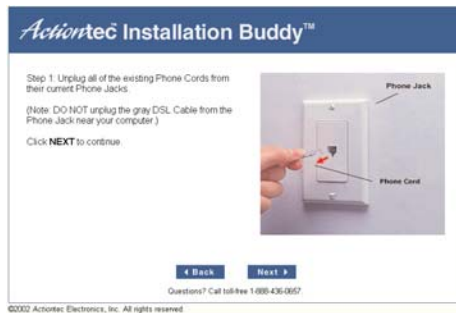
- As shown in the next window, leave the other end of the USB cable unplugged. Click **Next**.



11. When the next window appears, read the instructions, then get the **Phone Filters** from the **Clear Bag**. Click **Next**.



12. When the next window appears, unplug all **phone cords** from their respective **phone jacks**. Click **Next**.



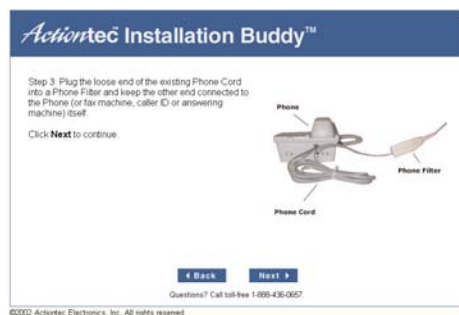
 **Note:** Do not remove the DSL Cable from the phone jack near the computer.

13. The following window appears. Plug a **phone filter** in every **phone jack**, then click **Next**.



☞ **Note:** Do not install a phone filter on the DSL Cable in the phone jack near the computer.

14. When the next window appears, plug the **phone cords** unplugged in step 12 into the **phone filters** installed in step 13, then click **Next**.



15. Another window appears. If a phone needs to be plugged into the Modem, click **Yes**. If not, click **No**.

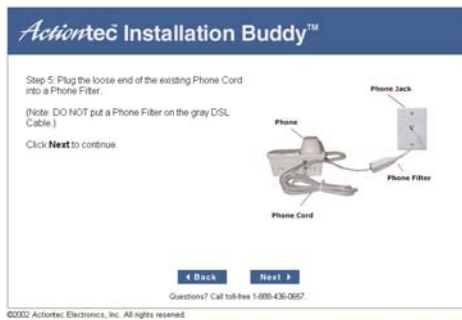


16. If Yes was chosen in step 15, the next window appears. Unplug the **phone cable** connected to the **computer** or nearby **phone jack**. Click **Next**. If No was chosen in step 15, go directly to step 19.



☞ **Note:** Do not remove the DSL Cable from the phone jack near the computer.

17. In the next window, plug a **phone filter** on the loose end of the **phone cord** unplugged in step 16, then click **Next**.



☞ **Note:** Do not install a phone filter on the DSL Cable in the phone jack near the computer.

18. When the next window appears, plug the **phone filter** into the **Phone Port** on the rear panel of the Modem. The Modem and phone should be connected exactly as shown in the picture, below. Click **Next**.



19. When the next window appears, the Modem is connected to a computer. Click **Finish**.



Next, go to “Configuring the Modem” on page 13.

Configuring the Modem

The following procedure details the steps involved in configuring the Modem to activate the DSL connection and load the software drivers. The Information Worksheet from the Internet Service Provider (ISP) must be available to complete this procedure. If this document has not been received, contact the ISP immediately.


1. Insert the rectangular end of the **USB cable** into a **USB port** on the front or back of the computer.



 **Note:** A USB port is shaped like a thin rectangle about 1/4 inch by 1/2 inch, and may be vertically or horizontally oriented.

2. Power up the computer. After the computer boots, Windows detects the Modem. When the “Add New Hardware Wizard” window appears, select **Search for the best driver for your device (Recommended)** by clicking the circle next to the text, then click **Next**.



 **Note:** The windows shown in steps 2 through 5 are for Windows 98. Your windows may appear slightly different.

3. In the next window, select **Specify a location** by clicking in the check box next to the text. Then, enter **d:\driver** in the text box (where “d” is the drive letter of the CD-ROM drive). Click **Next**.



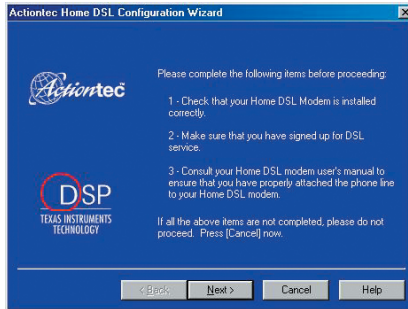
4. When the next window appears, make sure that the text below “Location of driver” displays the correct location of the driver, then click **Next**.



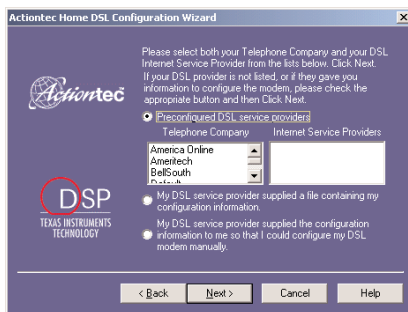
5. The final wizard window appears, stating that the software has been installed. Click **Finish**.



6. The first “Actiontec Home DSL Configuration Wizard” window appears. Read the instructions, then click **Next**.

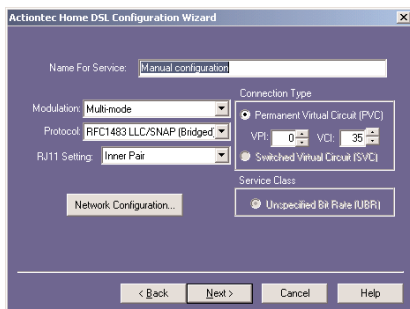


7. In the next window, select the one of the options by clicking on the circle next to the text.
- Select the first option (“Preconfigured”) if your DSL provider is listed in the “Telephone Company” list box. (Also select an “Internet Service Provider,” if applicable.)
 - Select the second option (“supplied a file”) if your DSL provider supplied a data disk containing configuration information.
 - Select the last option (“configure my DSL modem manually”) if your DSL provider supplied an information worksheet. After selecting an option, click **Next**.

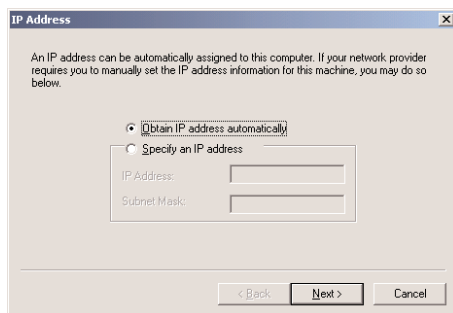


Note: If you selected the first option in step 8, go directly to step 14. If you selected the second option, insert the data disk into the computer, load the settings, then go to step 14.

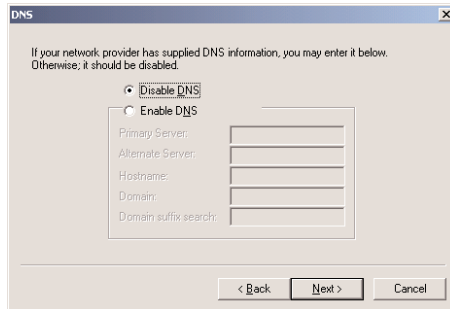
- If the last option was selected in step 8, use the Information Worksheet provided by the ISP to enter the settings in the next Wizard window, then click **Next**.



- The "IP Address" window appears. If the DSL provider supplied a specific IP address, click the circle next to "Specify an IP address" and enter the IP address and Subnet Mask address in their respective text boxes. If not given a specific IP address, click the circle next to "Obtain IP address automatically." When finished, click **Next**.



10. The “DNS” window appears. If the DSL provider supplied specific DNS information, click the circle next to “Enable DNS” and enter the information in the proper text boxes. If not given specific DNS information, click the circle next to “Disable DNS.” When finished, click **Next**.



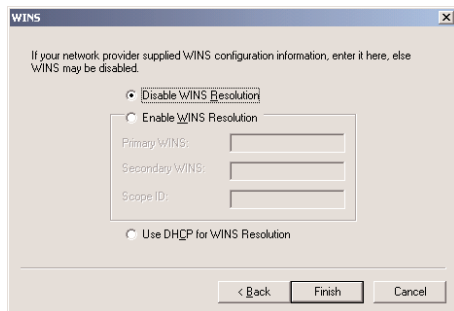
The screenshot shows a window titled "DNS" with a close button (X) in the top right corner. The text inside reads: "If your network provider has supplied DNS information, you may enter it below. Otherwise, it should be disabled." There are two radio buttons: "Disable DNS" (which is selected) and "Enable DNS". Below the radio buttons are five text input fields labeled: "Primary Server:", "Alternate Server:", "Hostname:", "Domain:", and "Domain suffix search:". At the bottom of the window are three buttons: "< Back", "Next >", and "Cancel".

11. The “Gateway” window appears. If the DSL provider supplied specific gateway information, click the circle next to “Specify an IP Gateway” and enter the information in the proper text boxes. If not given specific gateway information, click the circle next to “Obtain Gateway automatically.” When finished, click **Next**.

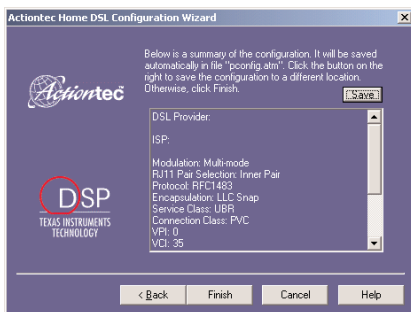


The screenshot shows a window titled "Gateway" with a close button (X) in the top right corner. The text inside reads: "If your network provider supplied a gateway address, enter it as the primary gateway below. If this information was not provided, you may automatically obtain gateway information when the network is started." There are two radio buttons: "Obtain Gateway automatically" (which is selected) and "Specify an IP Gateway". Below the radio buttons are two text input fields labeled: "Primary Gateway:" and "Alternate Gateway:". At the bottom of the window are three buttons: "< Back", "Next >", and "Cancel".

- The “WINS” window appears. If the DSL provider supplied specific WINS information, click the circle next to “Enable WINS Resolution” and enter the information in the proper text boxes. If not given specific WINS information, click the circle next to “Disable WINS.” When finished, click **Next**.



- The final Wizard window appears, containing a summary of the configuration settings. Read the instructions, then click **Finish**.



An “Information” window appears while the new configuration is applied and the software drivers are loaded.

14. Make sure the **PW** (Power) and **LK** (Link) lights on the front of the Modem glow solid green, orange, or red.



The Modem is now ready to use.

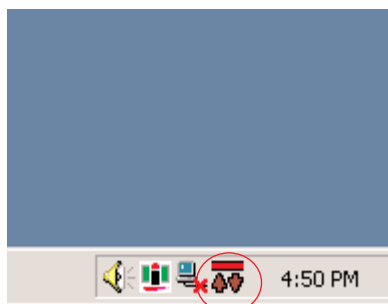
Using the Home DSL System Monitor

3

To check the operation of the *Actiontec* USB Home DSL Modem and view its connection status, use the Home DSL System Monitor.

Home DSL Manager Icon

After the Modem has been set up properly (see chapter 2, “Setting Up the Modem,” on page 5 for more details), the “*Actiontec* Home DSL Manager” icon will appear in the system tray of the computer’s desktop (next to the clock in the lower right corner, as shown in the red oval in the figure below).



The icon itself displays some details regarding the connection to the Modem:

Green bar above red/green arrows: indicates the Modem is connected and working properly. The arrows blink green when accessing a Web site and transmitting and receiving data; when they are solid green, the Modem is downloading or uploading larger data files. If the arrows are red, the Modem is connected to the Internet, but not accessing any Web sites.

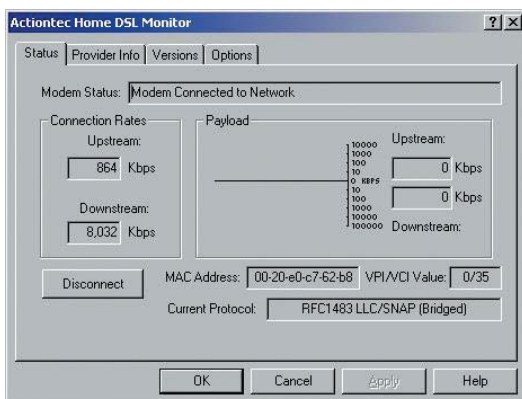
Yellow bar above red arrows: indicates the Modem is trying to connect to the Internet. This process normally takes less than 10 seconds, unless there is a problem with the phone line or DSL service. If the bar does not turn green after 20 seconds, check all connections to the Modem. If the yellow bar remains visible, contact the Internet Service Provider (ISP).

Red bar above red arrows: indicates an error has occurred with the Modem or its software. If this occurs, check all connections to the Modem, and if the problem persists, go to Start, Settings, Control Panel, Device Manager, and check for any yellow exclamation points in the “Modems” section, call *Actiontec* Technical Support.

Gray bar above red arrows: indicates the Modem is working properly, but no connection with the ISP has been established. If this condition persists, contact the ISP.

Home DSL Monitor

Double-clicking on the Home DSL Manager icon generates the “Actiontec Home DSL Monitor” window.



The Monitor window contains four tabs: **Status**, **Provider Info**, **Versions**, and **Options**.

Status

Clicking **Status** in the Monitor window brings up the “Status” tab, as shown in the figure above. This tab features statistics and other information regarding the Modem and its connection.

Modem Status

The “Modem Status” text box displays the current status of the Modem connection.

Connection Rates

The two text boxes in “Connection Rates” section (“Upstream” and “Downstream”) indicate the speed (in kilobits per second) of the Modem’s connection.

Payload

The graph and two text boxes in in the “Payload” section indicate the amount of traffic passing through the Modem.

MAC Address

The “MAC Address” text box displays the MAC (Media Access Control) address of the Modem. This address is unique for every networkable device.

VPI/VCI Value

The “VPI/VCI Value” text box displays the Virtual Path Identifier/Virtual Circuit Identifier value. This value cannot be changed from here.

Current Protocol

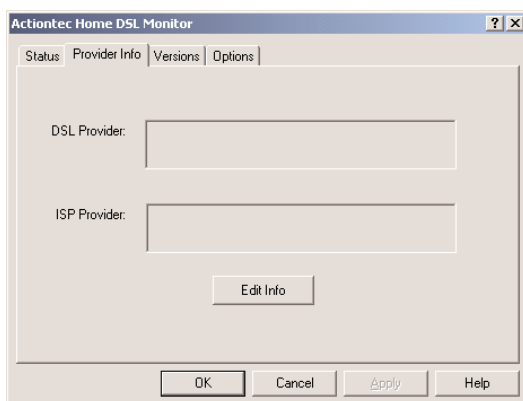
The “Current Protocol” text box displays the network protocol currently used by the Modem.

Disconnect

Clicking the “Disconnect” button disconnects the Modem from the Internet.

Provider Info

Clicking **Provider Info** in the Monitor window brings up the “Provider Info” tab. This tab features information regarding the Modem’s DSL and ISP provider.



DSL Provider

The “DSL Provider” text box displays the current DSL provider to which the Modem is connected.

ISP Provider

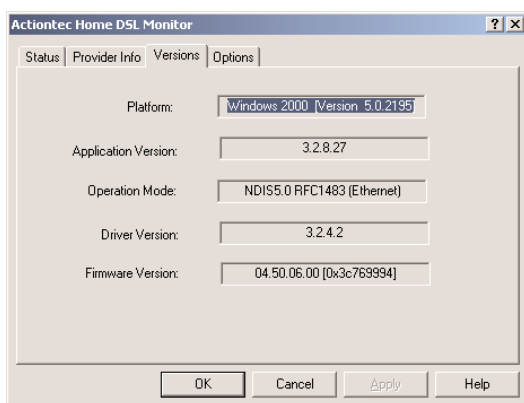
The “ISP Provider” text box displays the current ISP provider to which the Modem is connected.

Edit Info

Clicking the “Edit Info” button generates an “Information” window. The DSL provider can be changed from this window.

Versions

Clicking **Versions** in the Monitor window brings up the “Versions” tab. This tab features statistics and other information regarding the Modem’s software and firmware versions.



Platform

The “Platform” text box displays the version of the operating system currently running on the computer connected to the Modem.

Application Version

The “Application Version” text box displays the version of the Home DSL System Monitor currently running on the computer connected to the Modem.

Operation Mode

The “Operation Mode” text box displays the kind of connection (USB, Ethernet) with which the Modem is connected to the computer.

Driver Version

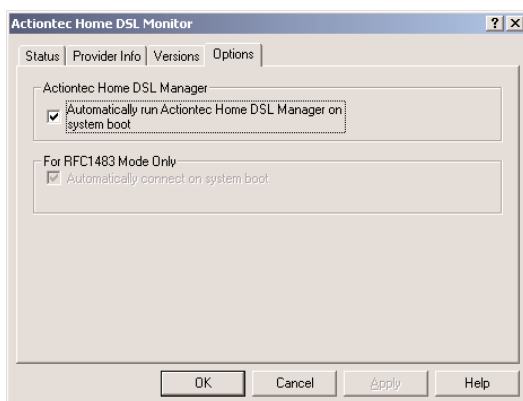
The “Driver Version” text box displays the Modem’s software driver version

Firmware Version

The “Firmware Version” text box displays the Modem’s firmware version.

Options

Clicking **Options** in the Monitor window brings up the “Options” tab. This tab features two option check boxes.



Actiontec Home DSL Manager

If a check is displayed in the box next to “Automatically run Actiontec Home DSL Manager on system boot,” the Home DSL Manager icon will appear in the system tray when the computer boots. If no check is displayed, the icon will not appear, and the Monitor window must be accessed by clicking Start, Programs, Actiontec Home DSL, and Actiontec Home DSL Manager. After rebooting, the icon will reappear in the system tray.

For RFC1483 Mode Only

This check box should only be accessed if instructed to do so by the ISP.

Troubleshooting and FAQs

4

This chapter contains a list of solutions for problems the user may encounter while using the Modem, as well as answers to some of the more frequently asked questions about the Modem.

I have more than four phones in my home. Where can I get more microfilters?

The USB Home DSL Modem package includes four microfilters. If more are needed, contact a local electronics retailer.

It has been a while since I signed up for DSL service with my Internet Service Provider and my service still has not been activated. What should I do?

Contact the Internet Service Provider to find out about the status of the DSL service.

My computer cannot find my USB Home DSL Modem.

If the modem installation has been performed and the computer is not finding the modem, check all connections, then click **Start** on the computer's desktop. Select **Settings, Control Panel, System, and Device Manager**. If you see a yellow exclamation mark or red "x" next to the "Home DSL Modem" under "Network Adapters" in the "Device Manager" window, contact *Actiontec* Technical Support.

Can I share my DSL line with more than one computer in my home?

Yes, but only with an Ethernet card.

Can I talk on the phone while being connected to the Internet?

Yes.

Can I fax over DSL?

No. You still need to send your faxes over your regular phone line using an analog modem or fax machine.

Do I have to pay my phone company and my ISP for DSL service?

No. By signing up with an Internet Service Provider for DSL service, the only DSL bill you will pay is to your ISP.

How do I know my modem is functioning properly?

See chapter 3, “Using the Home DSL System Monitor,” for more information about monitoring the operation and connection status of the Modem.

Reference

A

This appendix contains information about various topics, including accessing information about your Windows computer and wiring under special circumstances.

Locating Computer Information

The following procedure is valid for Windows 98, 98 SE, Me, 2000, and XP.

1. From the desktop, right-click on **My Computer**.
2. Select **Properties** from the menu that appears.
3. When the “System Properties” window appears, select **General**.
The version of the operating system, processor type, and amount of RAM installed in the computer are listed here.
4. Close the System Properties window.
5. From the desktop, double-click on **My Computer**.
6. Right-click the icon representing your hard disk. For example: Local Disk (C:).
Some computers have multiple hard disks.
7. From the menu that appears, select **Properties**.
8. When the window appears, select **General**.
9. The Free space value is the available space on the hard disk.
10. Close all windows.

Locating Windows Operating System Files

If the operating system files reside on the hard drive of the computer, follow the instructions below to locate them. If the files are not on the hard drive, they must be loaded from the installation disks.

Windows 98, 98 SE

1. From the desktop, click **Start**.
2. When the menu appears, select **Find**, then **Files or Folders**.
3. When the “Find: All Files” window appears, select **Name & Location**.
4. In the “Named” text box, enter:
***.cab**
5. Click the **down arrow** next to the “Look In” text box and select **My Computer** from the list that appears.
6. Click **Find Now**.
7. When the search is complete, note the directory path that appears most often in the “In Folder” column. For example: C:\WINDOWS\SYSTEM.
8. The Windows operating system files are located in this directory. Write down the directory path for future reference.
9. Close the Find: All Files window.

Windows Me, 2000

1. From the desktop, click **Start**.
2. Select **Search**, then **For Files and Folders**.
- 3a. **Windows Me**: The “Search Results” window appears. In the “Search for files or folders named” text box, enter:
***.cab**
- 3b. **Windows 2000**: The “Search Results” window appears. In the “Search for files or folders named” text box, enter:
i386

4. Click the **down arrow** next to the “Look in” text box and select **My Computer** from the list that appears.
5. Click **Search Now**.
- 6a. **Windows Me**: When the search is complete, note the directory path that appears most often in the “In Folder” column. For example:
C:\WINDOWS \OPTIONS\INSTALL.
- 6b. **Windows 2000**: When the search is complete, note the directory path that appears most often in the “In Folder” column. For example:
C:\WINNT \Driver Cache.
7. The Windows operating system files are located in this directory. Write down the directory path for future reference.
8. Close the Search Results window.

Windows Me, 2000

1. From the desktop, click **Start**.
2. Select **Search**, then **For Files and Folders**.
3. The “Search Results” window appears. In the panel at left titled “What do you want to search for?”, click **All files and folders**.
4. Another panel, titled “Search by any or all of the criteria below” appears. In the “Look in” text box, click the **down arrow** and select **My Computer** from the menu that appears.
5. In the “All or part of the file name” text box, enter:
i386
6. Click **Search**.
7. When the search is complete, note the directory path that appears most often in the “In Folder” column. For example: C:\WINDOWS \Driver Cache\.
8. The Windows operating system files are located in this directory. Write down the directory path (followed by “\i386”) for future reference.
9. Close the Search Results window.

Specifications

B

General

Model Number

UD800TP (USB Home DSL Modem)

Dimensions

Length: 5.375 in.

Width: 4.35 in

Height: 1.25 in

Standards

ANSI specification T1.413 issue 2

G.992.1 (G.dmt)

G.992.2 (G.lite)

WAN

Full-rate DSL modem

Speed

Up to 8 Mbps downstream, 640 Kbps upstream

Cabling Type

Phone

USB

LED Indicators

PWR (Power), LK (Link)

Environmental

Power Input

External, +5V +/- 5% @ 1.5 A

Certifications

FCC Class C (part 15, 68)

UL

Operating Temperature

0° C to 40° C (32°F to 104°F)

Storage Temperature

-20°C to 70°C (-4°F to 158°F)

Operating Humidity

10% to 85% non-condensing

Storage Humidity

5% to 90% non-condensing

Glossary



Access Point

A device that allows wireless clients to connect to one another. An access point can also act as a bridge between wireless clients and a “wired” network, such as an Ethernet network. Wireless clients can be moved anywhere within the coverage area of the access point and remain connected to the network. If connected to an Ethernet network, the access point monitors Ethernet traffic and forwards appropriate Ethernet messages to the wireless network, while also monitoring wireless traffic and forwarding wireless client messages to the Ethernet network.

Client

A desktop or mobile computer connected to a network.

DHCP (Dynamic Host Configuration Protocol)

A protocol designed to automatically assign an IP address to every computer on a network.

DNS (Domain Name System) Server Address

Allows Internet host computers to have a domain name and one or more IP addresses. A DNS server keeps a database of host computers and their respective domain names and IP addresses so that when a user enters a domain name into a Web browser, the user is sent to the proper IP address. The DNS server address used by computers on the home network corresponds to the location of the DNS server the ISP has assigned.

DSL (Digital Subscriber Line) Modem

A modem that uses existing phone lines to transmit data at high speeds.

Encryption

Provides security for wireless data transmissions.

ESSID (Extended Service Set Identifier)

A unique identifier for a wireless network.

Ethernet Network

A standard wired network configuration using cables and hubs.

Firewall

Prevents users outside the network from accessing and/or damaging files or computers on the network.

Gateway

A device that manages the data traffic of a network, as well as data traffic to and from the Internet.

IP (Internet Protocol) Address

A series of four numbers separated by periods identifying a unique Internet computer host.

ISP Gateway Address

An IP address for the Internet gateway. This address is only required when using a cable or DSL modem.

ISP (Internet Service Provider)

A business that connects individuals or businesses to the Internet.

LAN (Local Area Network)

A group of computers and devices connected together in a relatively small area (such as a house or an office). A home network is considered a LAN.

MAC (Media Access Control) Address

The hardware address of a device connected to a network.

NAT (Network Address Translation)

Allows all computers on a network to use one IP address, enabling access to the Internet from any computer on the the network without purchasing more IP addresses from an ISP.

PC Card

An Ethernet adapter connected to the PCMCIA slot in a computer, enabling the communication with the Gateway.

PPPoE (Point-to-Point Protocol over Ethernet)

A method of secure data transmission.

Subnet Mask

A set of four numbers configured like an IP address used to create IP address numbers used within a particular network only.

TCP/IP (Transmission Control Protocol/Internet Protocol)

The standard protocol for data transmission over the Internet.

WAN (Wide Area Network)

A network connecting computers located in separate areas, (i.e., different buildings, cities, countries). The Internet is a WAN.

WECA (Wireless Ethernet Compatibility Alliance)

An industry group that certifies cross-vender interoperability and compatibility of IEEE 802.11b wireless networking products and promotes the standard for enterprise, small business, and home environments.

WLAN (Wireless Local Area Network)

A group of computers and other devices connected wirelessly in a small area.

Notices

Regulatory Compliance Notices

Class B Equipment

This equipment has been tested and found to comply with the limits for a Class B digital device, pursuant to Part 15 of the FCC Rules. These limits are designed to provide reasonable protection against harmful interference in a residential installation. This equipment generates, uses, and can radiate radio frequency energy and, if not installed and used in accordance with the instructions, may cause harmful interference to radio communications. However, there is no guarantee that interference will not occur in a particular installation. If this equipment does cause harmful interference to radio or television reception, which can be determined by turning the equipment off and on, the user is encouraged to try to correct the interference by implementing one or more of the following measures:

- Reorient or relocate the receiving antenna;
- Increase the separation between the equipment and receiver;
- Connect the equipment to an outlet on a circuit different from that to which the receiver is connected;
- Consult the dealer or an experienced radio or television technician for help.

Modifications


The FCC requires the user to be notified that any changes or modifications made to this device that are not expressly approved by *Actiontec Electronics, Inc.*, may void the user's authority to operate the equipment.

Declaration of conformity for products marked with the FCC logo – United States only.

This device complies with Part 15 of the FCC Rules. Operation is subject to the following two conditions:

1. This device may not cause harmful interference;

2. This device must accept any interference received, including interference that may cause unwanted operation.

 **Note:** To comply with FCC RF exposure compliance requirements, the antenna used for this transmitter must be installed to provide a separation distance of at least 20 cm from all persons and must not be co-located or operating in conjunction with any other antenna or transmitter.

For questions regarding your product or the FCC declaration, contact:

Actiontec Electronics, Inc.
760 North Mary Ave.
Sunnyvale, CA 94086
United States
Tel: (408) 752-7700
Fax: (408) 541-9005

Limited Warranty

Hardware: *Actiontec* Electronics, Inc., warrants to the end user (“Customer”) that this hardware product will be free from defects in workmanship and materials, under normal use and service, for twelve (12) months from the date of purchase from *Actiontec* Electronics or its authorized reseller.

Actiontec Electronics’ sole obligation under this express warranty shall be, at *Actiontec*’s option and expense, to repair the defective product or part, deliver to Customer an equivalent product or part to replace the defective item, or if neither of the two foregoing options is reasonably available, *Actiontec* Electronics may, in its sole discretion, refund to Customer the purchase price paid for the defective product. All products that are replaced will become the property of *Actiontec* Electronics, Inc. Replacement products may be new or reconditioned. *Actiontec* Electronics warrants any replaced or repaired product or part for ninety (90) days from shipment, or the remainder of the initial warranty period, whichever is longer.

Software: *Actiontec* Electronics warrants to Customer that each software program licensed from it will perform in substantial conformance to its program specifications, for a period of ninety (90) days from the date of purchase from *Actiontec* Electronics or its authorized reseller. *Actiontec* Electronics warrants the media containing software against failure during the warranty period. The only updates that will be provided are at the sole discretion of *Actiontec* Electronics and will only be available for download at the *Actiontec* Web site, www.actiontec.com. *Actiontec* Electronics’ sole obligation under this express warranty shall be, at *Actiontec* Electronics’ option and expense, to refund the purchase price paid by Customer for any defective software product, or to replace any defective media with software which substantially conforms to applicable *Actiontec* Electronics published specifications. Customer assumes responsibility for the selection of the appropriate applications program and associated reference materials. *Actiontec* Electronics makes no warranty or representation that its software products will meet Customer’s requirements or work in combination with any hardware or applications software products provided by third parties, that the operation of the software products will be uninterrupted or error free, or that all defects in the software products will be corrected. For any third-party products listed in the *Actiontec* Electronics software product documentation or specifications as being compatible, *Actiontec* Electronics will make reasonable efforts to provide compatibility, except where the non-compatibility is caused by a “bug” or defect in the third party’s product or from use of the software product not in accordance with *Actiontec* Electronics published specifications or user guide.

THIS ACTIONTEC ELECTRONICS PRODUCT MAY INCLUDE OR BE BUNDLED WITH THIRD-PARTY SOFTWARE, THE USE OF WHICH IS GOVERNED BY A SEPARATE END-USER LICENSE AGREEMENT.

THIS ACTIONTEC ELECTRONICS WARRANTY DOES NOT APPLY TO SUCH THIRD-PARTY SOFTWARE. FOR THE APPLICABLE WARRANTY, PLEASE REFER TO THE END-USER LICENSE AGREEMENT GOVERNING THE USE OF SUCH SOFTWARE.

Obtaining Warranty Service: Customer may contact *Actiontec Electronics* Technical Support Center within the applicable warranty period to obtain warranty service authorization. Dated proof of purchase from *Actiontec Electronics* or its authorized reseller may be required. Products returned to *Actiontec Electronics* must be pre-authorized by *Actiontec Electronics* with a Return Merchandise Authorization (RMA) number marked on the outside of the package, and sent prepaid and packaged appropriately for safe shipment, and it is recommended that they be insured or sent by a method that provides for tracking of the package. The repaired or replaced item will be shipped to Customer, at *Actiontec Electronics*' expense, not later than thirty (30) days after *Actiontec Electronics* receives the defective product.

Return the product to:
(In the United States)
Actiontec Electronics, Inc.
760 North Mary Avenue
Sunnyvale, CA 94085

Actiontec Electronics shall not be responsible for any software, firmware, information, memory data, or Customer data contained in, stored on, or integrated with any products returned to *Actiontec Electronics* for repair, whether under warranty or not.

WARRANTIES EXCLUSIVE: IF AN ACTIONTEC ELECTRONICS' PRODUCT DOES NOT OPERATE AS WARRANTED ABOVE, CUSTOMER'S SOLE REMEDY FOR BREACH OF THAT WARRANTY SHALL BE REPAIR, REPLACEMENT, OR REFUND OF THE PURCHASE PRICE PAID, AT ACTIONTEC ELECTRONICS' OPTION. TO THE FULL EXTENT ALLOWED BY LAW, THE FOREGOING WARRANTIES AND REMEDIES ARE EXCLUSIVE AND IN LIEU OF ALL OTHER WARRANTIES, TERMS OR CONDITIONS, EXPRESS OR IMPLIED, EITHER IN FACT OR BY OPERATION OF LAW, STATUTORY OR OTHERWISE, INCLUDING WARRANTIES, TERMS OR CONDITIONS OF MERCHANTABILITY, FITNESS FOR A PARTICULAR PURPOSE, SATISFACTORY QUALITY, CORRESPONDENCE WITH DESCRIPTION, AND NON-INFRINGEMENT, ALL OF WHICH ARE EXPRESSLY DISCLAIMED. ACTIONTEC ELECTRONICS

Limited Warranty

NEITHER ASSUMES NOR AUTHORIZES ANY OTHER PERSON TO ASSUME FOR IT ANY OTHER LIABILITY IN CONNECTION WITH THE SALE, INSTALLATION, MAINTENANCE OR USE OF ITS PRODUCTS.

ACTIONTEC ELECTRONICS SHALL NOT BE LIABLE UNDER THIS WARRANTY IF ITS TESTING AND EXAMINATION DISCLOSE THAT THE ALLEGED DEFECT OR MALFUNCTION IN THE PRODUCT DOES NOT EXIST OR WAS CAUSED BY CUSTOMER'S OR ANY THIRD PERSON'S MISUSE, NEGLIGENCE, IMPROPER INSTALLATION OR TESTING, UNAUTHORIZED ATTEMPT TO OPEN, REPAIR OR MODIFY THE PRODUCT, OR ANY OTHER CAUSE BEYOND THE RANGE OF THE INTENDED USE, OR BY ACCIDENT, FIRE, LIGHTNING, OTHER HAZARDS, OR ACTS OF GOD.

LIMITATION OF LIABILITY: TO THE FULL EXTENT ALLOWED BY LAW, *ACTIONTEC* ELECTRONICS ALSO EXCLUDES FOR ITSELF AND ITS SUPPLIERS ANY LIABILITY, WHETHER BASED IN CONTRACT OR TORT (INCLUDING NEGLIGENCE), FOR INCIDENTAL, CONSEQUENTIAL, INDIRECT, SPECIAL, OR PUNITIVE DAMAGES OF ANY KIND, OR FOR LOSS OF REVENUE OR PROFITS, LOSS OF BUSINESS, LOSS OF INFORMATION OR DATA, OR OTHER FINANCIAL LOSS ARISING OUT OF OR IN CONNECTION WITH THE SALE, INSTALLATION, MAINTENANCE, USE, PERFORMANCE, FAILURE, OR INTERRUPTION OF ITS PRODUCT, EVEN IF *ACTIONTEC* ELECTRONICS OR ITS AUTHORIZED RESELLER HAS BEEN ADVISED OF THE POSSIBILITY OF SUCH DAMAGES, AND LIMITS ITS LIABILITY TO REPAIR, REPLACEMENT, OR REFUND OF THE PURCHASE PRICE PAID, AT *ACTIONTEC* ELECTRONICS' OPTION. THIS DISCLAIMER OF LIABILITY FOR DAMAGES WILL NOT BE AFFECTED IF ANY REMEDY PROVIDED HEREIN SHALL FAIL OF ITS ESSENTIAL PURPOSE.

Disclaimer: Some countries, states or provinces do not allow the exclusion or limitation of implied warranties or the limitation of incidental or consequential damages for certain products supplied to consumers, or the limitation of liability for personal injury, so the above limitations and exclusions may be limited in their application to you. When the implied warranties are not allowed to be excluded in their entirety, they will be limited to the duration of the applicable written warranty. This warranty gives you specific legal rights which may vary depending on local law.

Dispute Resolution: The customer may contact the Director of Technical Support in the event the Customer is not satisfied with *Actiontec* Electronics' response to the complaint. In the event that the Customer is still not satisfied with the response of the Director of Technical Support, the Customer is instructed to contact the Director of Marketing. In the event that the Customer is still not satisfied with the response of the Director of Marketing, the Customer is instructed to contact the Chief Financial Officer and/or President.

Governing Law: This Limited Warranty shall be governed by the laws of the State of California, U.S.A., excluding its conflicts of laws and principles, and excluding the United Nations Convention on Contracts for the International Sale of Goods.

Free Manuals Download Website

<http://myh66.com>

<http://usermanuals.us>

<http://www.somanuals.com>

<http://www.4manuals.cc>

<http://www.manual-lib.com>

<http://www.404manual.com>

<http://www.luxmanual.com>

<http://aubethermostatmanual.com>

Golf course search by state

<http://golfingnear.com>

Email search by domain

<http://emailbydomain.com>

Auto manuals search

<http://auto.somanuals.com>

TV manuals search

<http://tv.somanuals.com>