

INFORMATION ONLY – DOES NOT COMMUNICATE
A MODIFICATION OR SAFETY CONDITION

4287A-03

S E R V I C E N O T E

Supersedes:
NONE

4287A RF LCR Meter

Serial Numbers: **JP1KGxxxxx, JP2KGxxxxx, MY432xxxxx**

HDD repair procedure is changed

Parts Required:

P/N	Description	Qty.
04287-65000	Mass Storage Disk (HDD) for service	1

ADMINISTRATIVE INFORMATION

SERVICE NOTE CLASSIFICATION:

INFORMATION ONLY

AUTHOR: kW PRODUCT LINE: WN

ADDITIONAL INFORMATION:

This procedure must be performed by Agilent Technologies service offices

© AGILENT TECHNOLOGIES, INC. 2005
PRINTED IN U.S.A.



January 13, 2005

Situation:

The new HDD (04287-65000) for repair does not include any operating system. When the HDD (04287-65000) is used, the operating system for 4287A should be installed.

Solution/Action:

The new HDD repair procedure for the 4287A is as follows.

Required Equipment

OS Image: CD disk (Operating system for 4287A, F/w rev.1.31, Agilent service office use only)

HDD: p/n 04287-65000 (It is available for 4287A(win98), E4991A(win98), E5070/71A)

Software : Symantec Ghost™ 8.0 (English version, Enterprise product)

System(PC) : Windows 2000 Professional (or Windows XP Professional) with DVD drive
(or available to support external DVD drives)

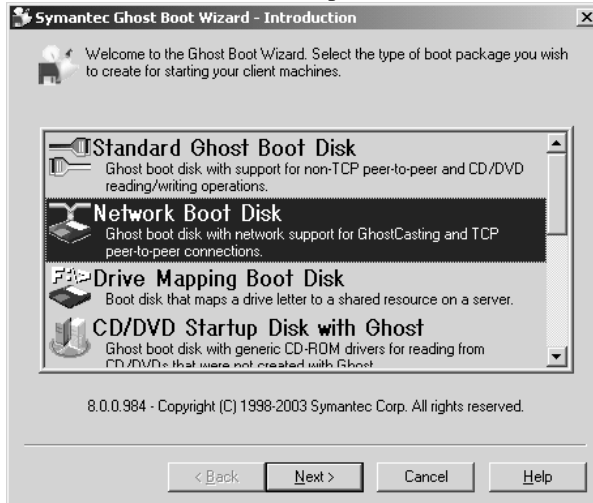
LAN Cable: Cross (It enables the peer-to-peer communication between the 4287A and the PC.)
(or 2 straight cables and a hub.)

Outline of the procedure

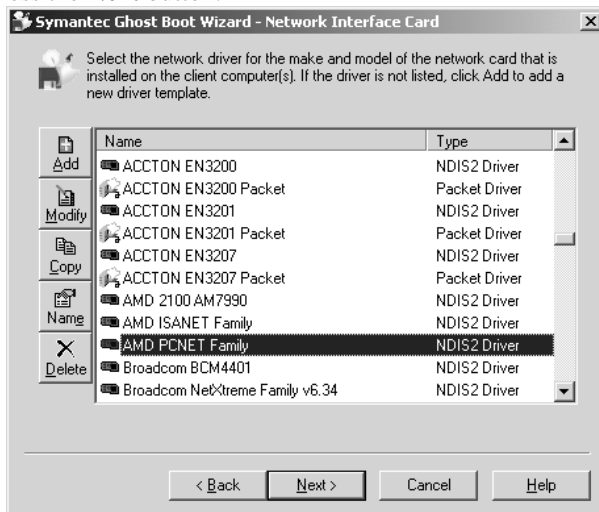
1. **Make Boot disks using Symantec Ghost (only needs to be done one time) (5 min.)**
2. **Replace the defective HDD with the new HDD(p/n 04287-65000) (10 min.)**
3. **Connect the 4287A to your PC installed Symantec Ghost directly**
4. **Set up IP address and subnet mask of your PC (5 min.)**
5. **Set up GhostCast server (10 min.)**
6. **Copy the image file onto the 4287A's HDD (10 min.)**
7. **Perform initial setting for the 4287A (15 min.)**

1. Make Boot disks using Symantec Ghost (Required for the first time)

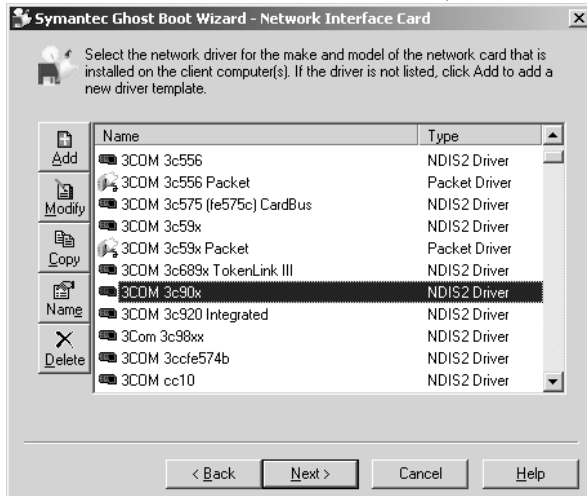
- 1) Click **Start – Programs – Symantec Ghost – Ghost Boot Wizard**.
- 2) Select **Network Boot Disk** and press the **Next** button.

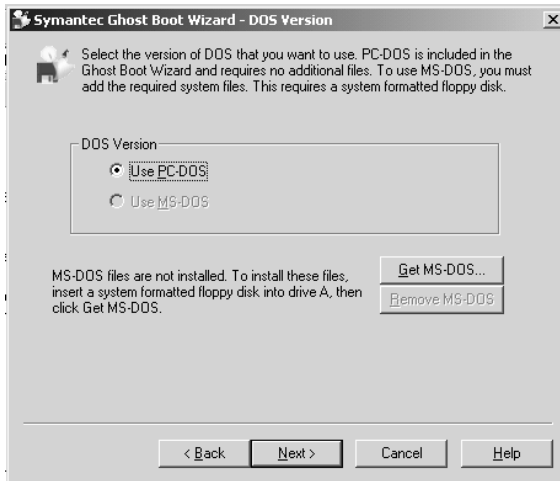
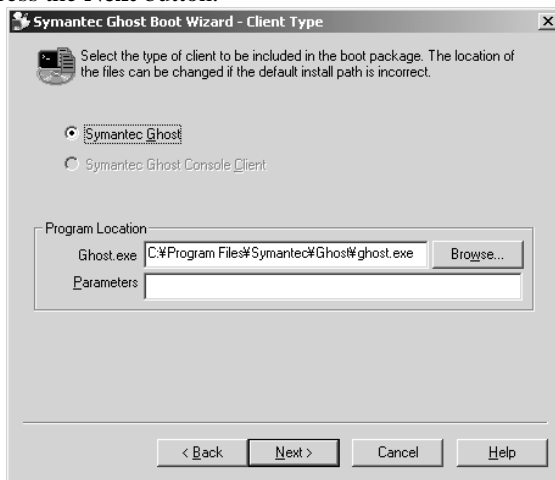
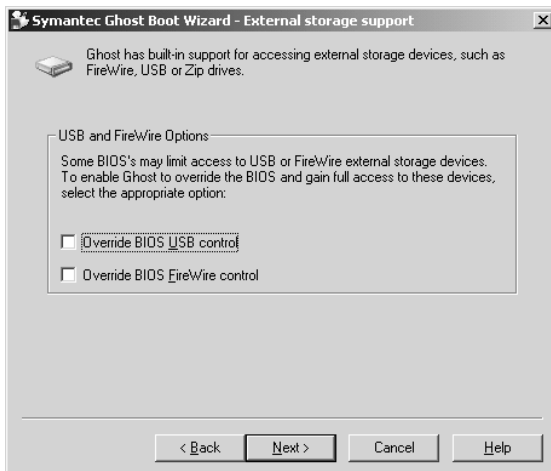


- 3) If HP Ethernet with LAN remote power adapter is installed in the 4287A, select **AMD PCNET Family** and press the **Next** button.

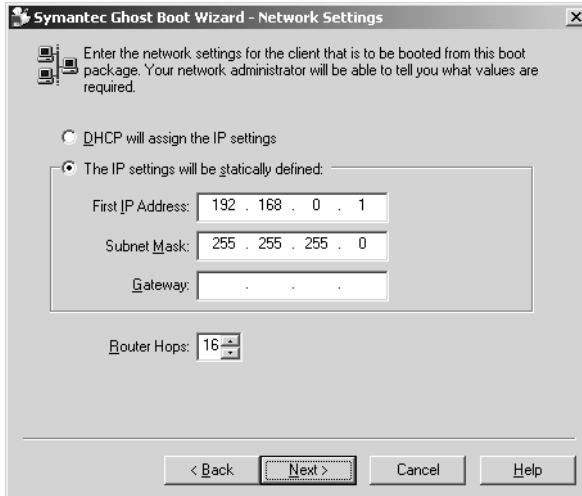


- If 3Com EtherLink is installed in the 4287A, select **3COM 3c90x** and press the **Next** button.



4) Press the **Next** button5) Press the **Next** button.6) Press the **Next** button.

- 7) Select The IP setting, and enter IP address 192.168.0.1 and subnet mask 255.255.255.0. Press the **Next** button.

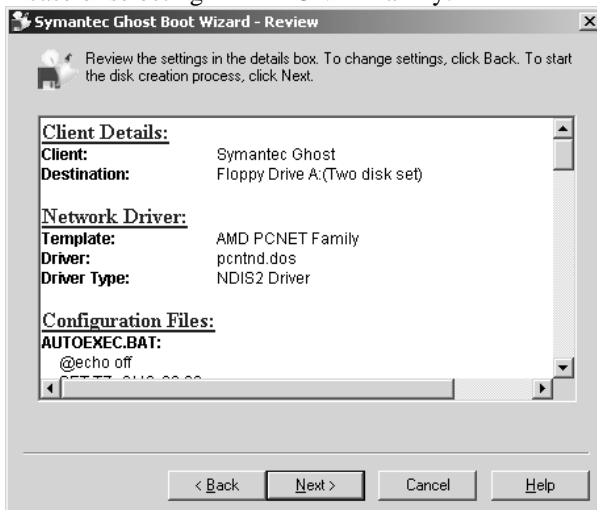


- 8) Insert a floppy disk into your PC's FDD, and the **Next** button.

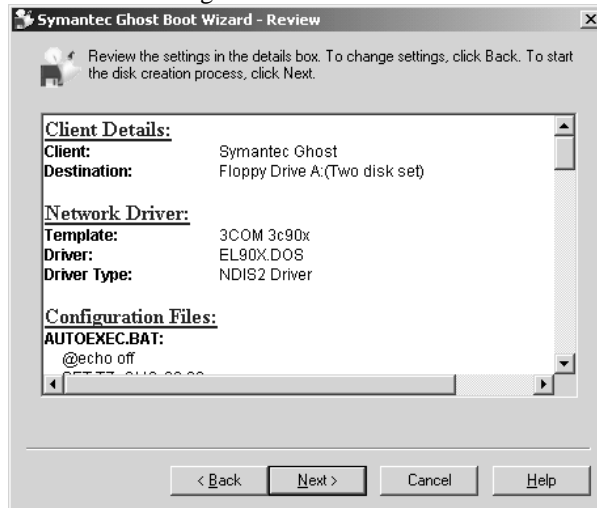


- 9) Press the **Next** button.

In case of selecting AMD PCNET Family:



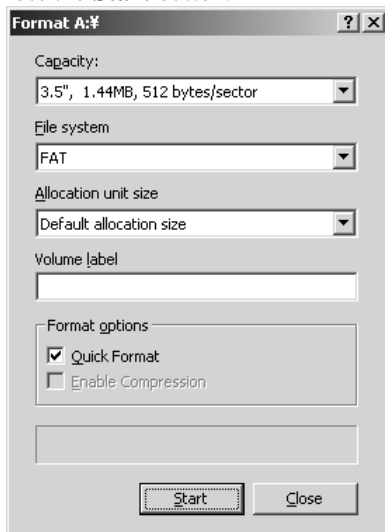
In case of selecting 3COM 3c90x:



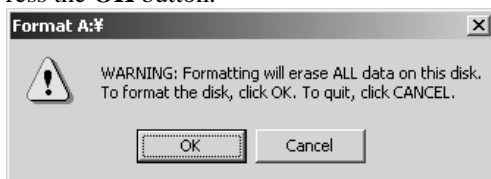
10) Press the **OK** button..



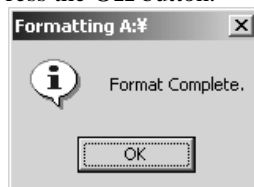
11) Press the **Start** button.



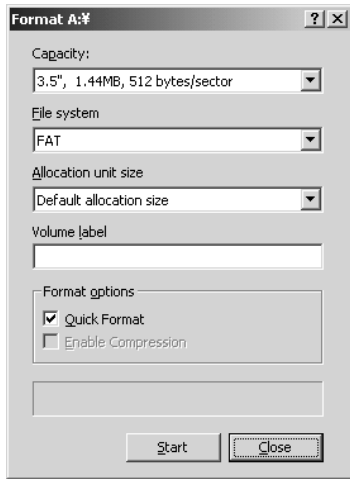
12) Press the **OK** button.



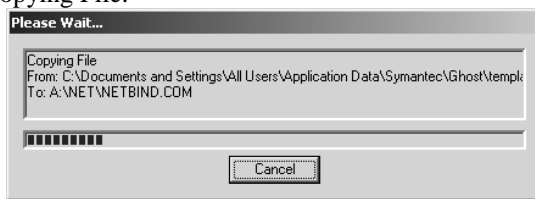
13) Press the **OK** button.



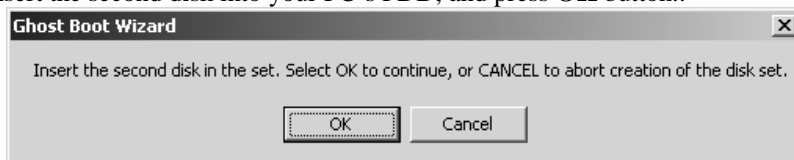
14) Press the **Close** button.



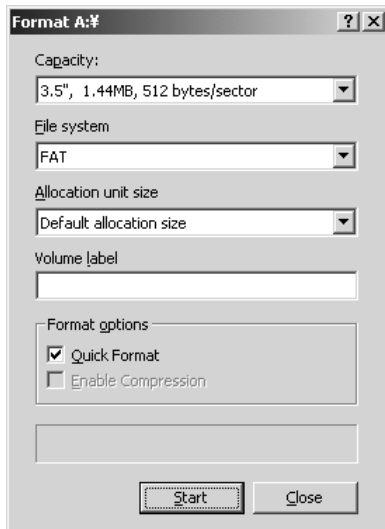
15) Copying File.



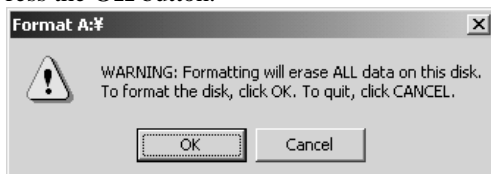
16) Insert the second disk into your PC's FDD, and press **OK** button..



17) Press the **Start** button.



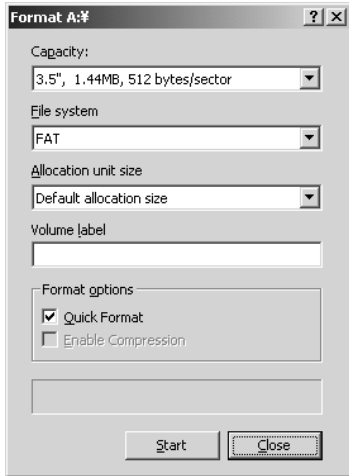
18) Press the **OK** button.



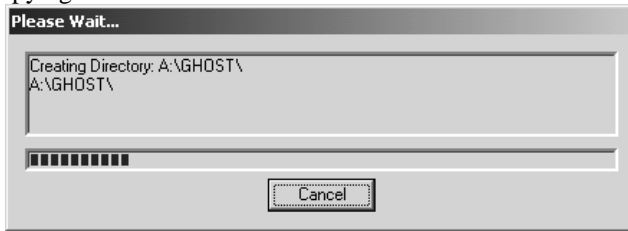
19) Press the **OK** button.



20) Press the **Close** button.



21) Copying File.



22) Press the **Finish** button.



2. Replace the defective HDD with the new HDD(p/n 04287-65000)

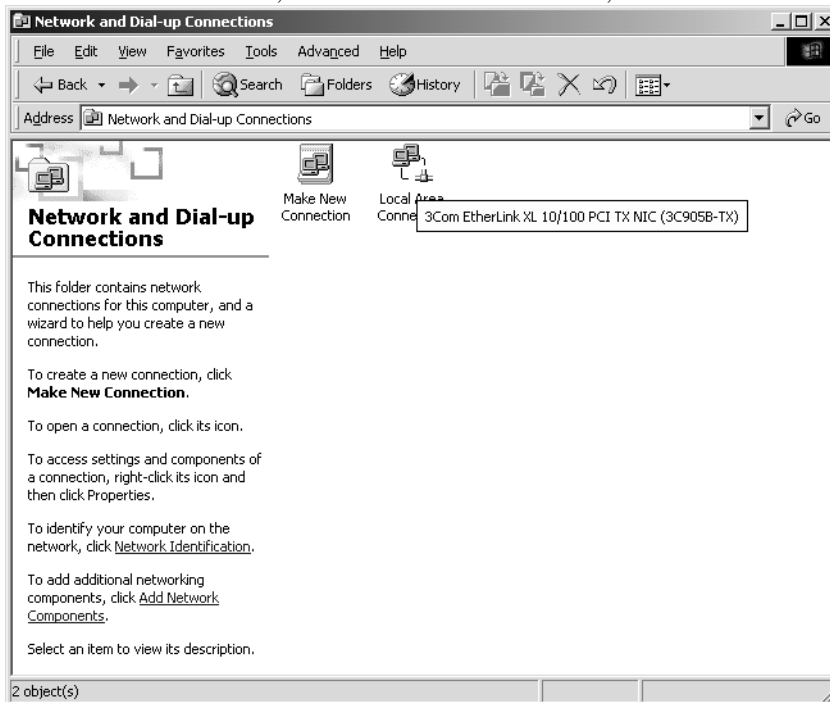
- 1) Replace the defective HDD with the new HDD (p/n 04287-65000).
Refer to “A27 Mass Storage Disk Drive Replacement” of the 4287A service manual.

3. Connect the 4287A to your PC installed Symantec Ghost directly

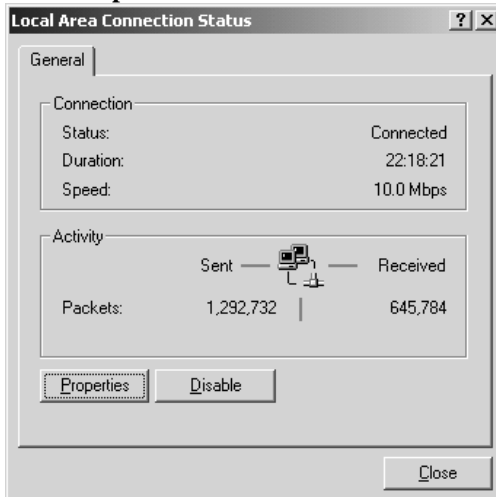
- 1) Connect the 4287A to your PC installed Symantec Ghost directly using a crossed LAN cable (or two straight LAN cables and a Hub for LAN).

4. Set up your PC's IP address and subnet mask

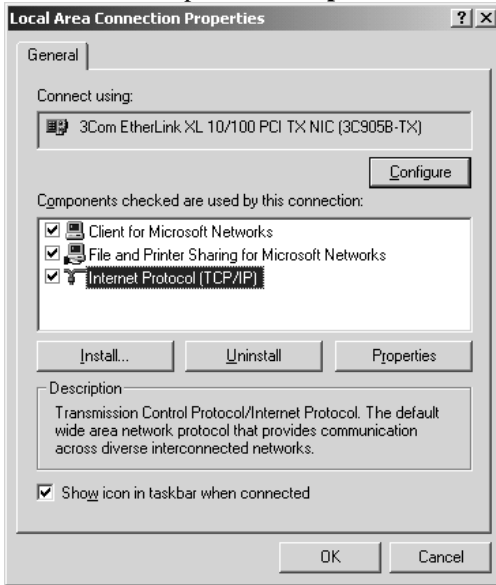
- 1) Double-click “My Computer” icon on Windows desktop of your PC. And double-click Control Panel. The Control Panel window will appear.
- 2) In the Control Panel window, double-click **Network and...**, and click **Local Area Connection**.



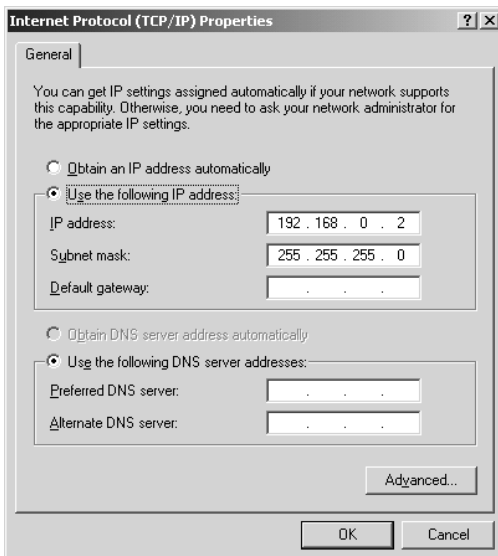
- 3) Press the **Properties** button.



- 4) Select **TCP/IP** and press the **Properties** button.



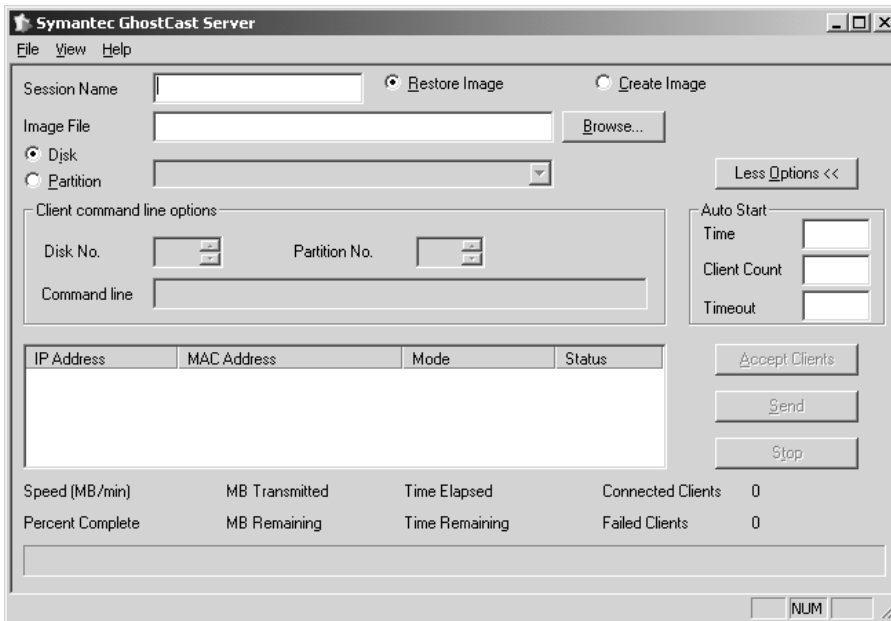
- 5) Select **Use the following IP address**, and then enter the IP address 192.168.0.2 and subnet mask 255.255.255.0. Press the **OK** button.



- 6) Restart your PC.

5. Set up GhostCastServer

- 1) Insert the CD disk (Operating System for 4287A) into your PC's CD drive (or an external CD drive). Then, copy the image file of the CD disk onto your PC's HDD (C drive) as a temporary image file.
- 2) Click **Start – Programs – Symantec Ghost – GhostCastServer**.
- 3) Click the **Browse** button.



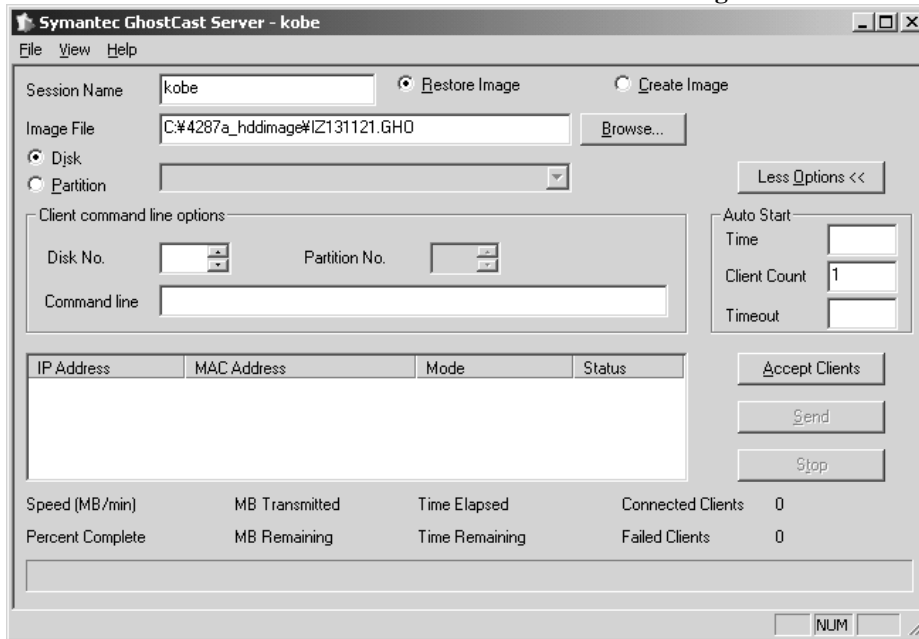
- 4) If Insert disk dialog box is displayed, click the **Cancel** button.



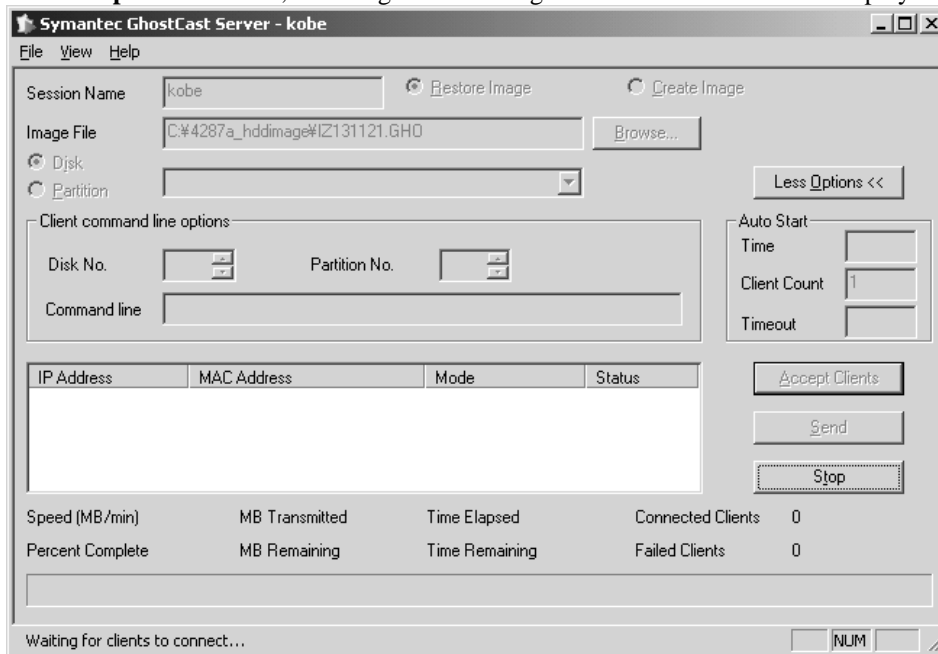
- 5) Select the temporary image file you copied, and press the **Open** button.



6) Enter session name **kobe** and client count **1**. Then select **Restore Image and Disk**

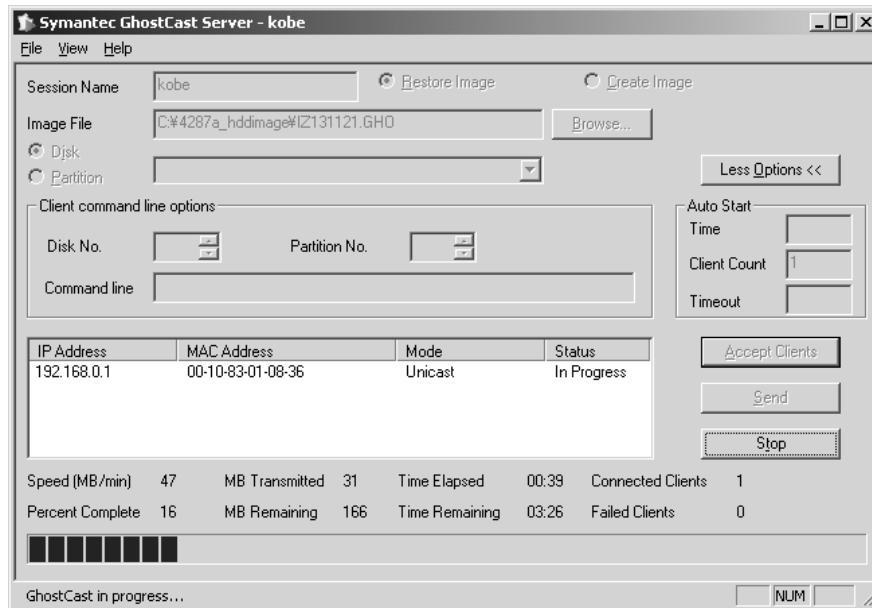


7) Click the **Accept Client**. Then, a message of “Waiting for client to connect...” is displayed.

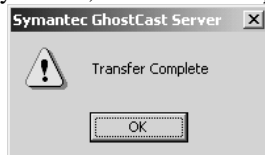


6. Copy the image file onto the 4287A's HDD

- 1) Connect the external keyboard and mouse to the connectors on the 4287A rear panel.
- 2) Insert the ghost boot disk (1st disk) into the FDD of the 4287A.
- 3) Turn the instrument on.
- 4) **PC DOS 7.1 Startup Menu** is displayed. Then, select **1** and press **Enter** key.
- 5) Confirm that there are no error messages on the display.
- 6) A message of **"Insert Ghost boot disk 2 (containing Ghost.exe). Press any key to continue.."** is displayed. Then, insert the disk 2 into the FDD, and press **Enter** key.
- 7) **About Symantec Ghost** dialog box is displayed. Then, click the **OK** button.
- 8) Click **Ghost Cast – Unicast**.
- 9) **GhostCast Session Name to Join** dialog box is displayed. Enter the session name **kobe**, select Server IP Address and enter the IP address **192.168.0.2**. Then, click the **OK** button.
- 10) **Select local destination drive by clicking on the driver number** dialog box is displayed. Then, click the **OK** button.
- 11) **Destination Drive Details** dialog box is displayed. Then, click the **OK** button.
- 12) **Question: (LB22)** dialog box is displayed. Then, click the **Yes** button.
- 13) **Progress Indicator** dialog box appears.
- 14) In your PC, a message of **"GhostCast in progress.."** is displayed.



- 15) In 4287A display, **Clone Complete** dialog box is displayed. Then, click the **Continue** button and **Quit**.
- 16) **Quit Symantec Ghost** dialog box is displayed. Then, click the **Yes** button.
- 17) **A:\GHOST>** prompt is displayed. Then, turn the 4287A off.
- 18) In your PC, **Transfer Complete** is displayed. Then, click the **OK** button.



- 19) Remove the boot disk from the 4287A's FDD.

7. Perform initial setting for 4287A

- 1) Disconnect the LAN cable from the 4287A.
- 2) Turn the 4287A on.
- 3) **System Setting Change** Dialog Box is displayed. Then, click the **No** button.
- 4) Double-click the **NetConf** icon.
- 5) Network adapter window is displayed. Then, click the **OK** button.
- 6) Success window is displayed. Then, click the **OK** button.
- 7) Double-click the **CheckNetConf** icon.
- 8) Network adapter window is displayed. Then, click the **OK** button.
- 9) Success window is displayed. Then, click the **OK** button.
- 10) Double-click the **4287A RF LCR Meter** icon. Then, confirm that the measurement view is displayed.
- 11) Turn the 4287A off.
- 12) Turn the 4287A on. Then, confirm that the **Network Neighborhood** icon is displayed.
- 13) Double-click the **4287A RF LCR Meter** icon. Then, click **System – LAN SETUP – Network Device – Disable**.
- 14) Click **System – SERVICE MENU – MISC MENU – SHUTDOWN AS INSTR**. Then, type password “**kid**” and click the **OK**. The 4287A shuts down automatically.
- 15) Turn the 4287A on. Then, confirm that the Instrument Mode is displayed.
- 16) Turn the 4287A off.
- 17) Turn the 4287A on.
- 18) Press B on the keyboard immediately when a message of “Push ‘B’ key to enter back up mode [B, N]?” is displayed.
- 19) Follow the instructions for back up mode.
- 20) The 4287A is restarted. Confirm that a message of “Push ‘R’ key to enter recovery mode [R, N]?” is displayed.
- 21) Confirm that the Instrument Mode is displayed. Then, turn the 4287A off.

Free Manuals Download Website

<http://myh66.com>

<http://usermanuals.us>

<http://www.somanuals.com>

<http://www.4manuals.cc>

<http://www.manual-lib.com>

<http://www.404manual.com>

<http://www.luxmanual.com>

<http://aubethermostatmanual.com>

Golf course search by state

<http://golfingnear.com>

Email search by domain

<http://emailbydomain.com>

Auto manuals search

<http://auto.somanuals.com>

TV manuals search

<http://tv.somanuals.com>