



DSU IV ESP

All-Rate DSU with SNMP and Dial Backup

Product Features

- Supports DDS rates from 2.4 to 64 Kbps including 19.2 and 38.4 Kbps
- 4-wire Switched 56 operation
- Embedded SNMP and Telnet
- Control port provides SLIP/PPP access to SNMP or VT100 terminal configuration
- Two ESP option slots
- 10BaseT Ethernet SNMP access port available with ESP ethernet card
- Automatic or manual dial backup with option modules
- Time of day and weekend dial backup lockout options
- Industry-leading five-year North American warranty

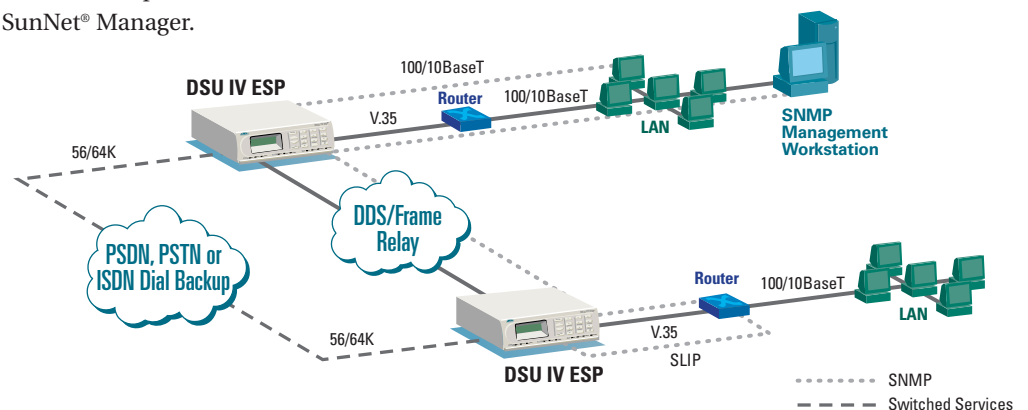
The ADTRAN® DSU IV ESP™ is an all-rate data service/channel service unit (DSU/CSU) with an integral SNMP (simple network management protocol) agent and optional dial backup (DBU) capabilities. It provides an interface between digital data service (DDS) or 4-wire Switched 56 and the customer's data terminal equipment (DTE). The DSU IV ESP provides access to traditional dedicated point-to-point, multi-point, or Frame Relay services.

The unit supports synchronous (2.4, 4.8, 9.6, 19.2, 38.4, 56, and 64 Kbps) and asynchronous (2.4, 4.8, 9.6, 19.2, 38.4, and 57.6 Kbps) data rates. Both EIA-232 and V.35 physical interfaces are provided for connection to the customer's DTE equipment.

Embedded SNMP and Telnet are available through SLIP (serial line internet protocol) or PPP (point to point protocol) using the integrated control port or through an optional 10BaseT ethernet port when configured with the plug-in ESP ethernet card. Through the Management Information Base (MIB)-II standard and an ADTRAN-supplied enterprise MIB, the DSU IV ESP can be configured, monitored, and diagnosed using standard SNMP network management programs such as HP OpenView®, Netview®, and SunNet® Manager.

The Dial Backup (DBU) feature of the DSU IV ESP allows automatic or manual switched backup in the event of a dedicated line failure. The addition of DBU is accomplished through a family of plug-in ESP DBU cards. There are three versions of ESP DBU cards available for the DSU IV ESP: ISDN, 4-wire Switched 56, and V.34 analog (max. 33.6 Kbps). Upon recognition of a failure(s), the unit connects to the remote end using the switched network. The user can choose whether the unit automatically or manually reverts to the dedicated circuit when it is restored. Optional weekend and time of day DBU lockout options are provided.

The unit responds to standard loopback commands from the telephone company central office. In addition, there are several built-in test capabilities. Complete control, configuration, and diagnosis are available through a 16-key keypad and a two-line by 16-character LCD display. A VT100 terminal configuration and control mode is also available through the control port. Flash download capability allows for quick and easy installation of new features and enhancements.





ADTRAN, Inc.

Attn: Enterprise Networks
901 Explorer Boulevard
Huntsville, AL 35806

P.O. Box 140000
Huntsville, AL 35814-4000

256 963-8000 voice
256 963-8699 fax

General Information

800 9ADTRAN
info@adtran.com
www.adtran.com

Pre-Sales

Technical Support

800 615-1176 toll-free
application.engineer@adtran.com
www.adtran.com/support

Where to Buy

877 280-8416 toll-free
channel.sales@adtran.com
www.adtran.com/where2buy

Post-Sales

Technical Support

888 423-8726
support@adtran.com
www.adtran.com/support

ACES Installation & Maintenance Service

888 874-ACES
aces@adtran.com
www.adtran.com/support

International Inquiries

256 963 8000 voice
256 963-6300 fax
international@adtran.com
www.adtran.com/international

For the regional office nearest you, visit:

www.adtran.com/where2buy



ADTRAN is an ISO 9001, ISO 14001, and a TL 9000 certified supplier.

61204011L1-8F April 2003
Copyright © 2003 ADTRAN, Inc.
All rights reserved.

DSU IV ESP

All-Rate DSU with SNMP and Dial Backup

Product Specifications

Operating Modes

- Dedicated DDS (point-to-point, multipoint)
- Switched 56 (4-wire)
- ISDN (1B+D)
- PSTN (V.34 analog)

Network Data Rates

- **Dedicated mode service rates:** 2.4, 4.8, 9.6, 19.2, 38.4, 56, and 64 Kbps
- **Switched mode service rate:** 56 Kbps
- **Dial backup:** Switched 56 (56 Kbps), V.34 (2.4 - 33.6 Kbps), ISDN (56 or 64 Kbps)

DTE Rates Provided

- DTE rates match service rates
- DTE-to-loop rate matching in both dedicated and switched modes
- **Synchronous rates:** 2.4, 4.8, 9.6, 19.2, 38.4, 56, and 64 Kbps
- **Asynchronous rates:** 2.4, 4.8, 9.6, 19.2, 38.4, and 57.6 Kbps

DTE Interfaces

- Both EIA-232 and V.35 electrical and physical DTE interfaces

SNMP

- SNMP & Telnet
- Integrated SLIP/PPP (async) port
- Physical Connector RJ-48S and DB-25
- Optional 10BaseT interface with ESP Ethernet Card
- MIB II RFC 1213 complaint

Clocking

- Normal DDS or private network tributary (slaved to network receive clock)
- Private network master (internal)
- Normal DDS tail circuit
- Private network master (slaved to external clock)

Switched Mode Dialing Options

- Stored number
- Front panel keypad
- DTR dialing of stored numbers
- In-band AT commands
- V.25 bis in-band dialing

Diagnostics

- **Network:** CSU and DSU loopbacks
- **User:** Local DTE and loop, remote V.54
- **Test Patterns:** 2047, 511, DDS stress patterns 1-4

Specifications subject to change without notice. DSU IV ESP is a trademark of ADTRAN, Inc. ADTRAN is a registered trademark of ADTRAN, Inc. All registered trademarks and trademarks mentioned in this publication are the property of their respective owners.

Line Requirements

- Loop transmission parameters as defined in:
 - **AT&T PUB 62310:** Dedicated DDS
 - **AT&T PUB 4146B:** Switched 56
 - **Sprint TS 0046:** Switched 56

Line Interface

- RJ-48S
- 4-wire
- Full duplex

Receiver Sensitivity

- -45 dB at all rates

Agency Approvals

- FCC Part 15
- Class A
- Part 68
- Industry Canada CS03
- UL and CUL

Environment

- **Operating:** 0 to 50°C (32 to 122°F)
- **Storage:** -20 to 70°C (-4 to 158°F)
- **Relative Humidity:** Up to 95%, non-condensing

Physical

- **Dimensions:** 10.4"D x 8.0"W x 2.4"H
- **Weight:** 4.5 lbs
- **Power:** 115 VAC, 60 Hz, 5 W

Product Includes

- Two 8-pin to 8-pin modular cables
- Modular to female DB-25 adapter
- User Manual

Ordering Information

| Equipment | Part # |
|---------------------------------|-----------|
| DSU IV ESP | 1204011L1 |
| ESP Ethernet Card | 1204005L1 |
| ESP 4-wire Switched 56 DBU Card | 1204001L1 |
| ESP V.34 DBU Card | 1204002L2 |
| ESP ISDN DBU Card | 1204004L1 |
| 19" Dual ESP Shelf | 1200202L1 |
| Dual ESP Blank Cover | 1200202L2 |



Shown with option cards installed

Free Manuals Download Website

<http://myh66.com>

<http://usermanuals.us>

<http://www.somanuals.com>

<http://www.4manuals.cc>

<http://www.manual-lib.com>

<http://www.404manual.com>

<http://www.luxmanual.com>

<http://aubethermostatmanual.com>

Golf course search by state

<http://golfingnear.com>

Email search by domain

<http://emailbydomain.com>

Auto manuals search

<http://auto.somanuals.com>

TV manuals search

<http://tv.somanuals.com>