



# NetVanta 1224 PoE/1224ST PoE

## Managed Layer 2, Power over Ethernet, Ethernet Switches

### Product Features

- 24-port auto-sensing 10/100Base-T managed Layer 2 Ethernet switch
- Available with SFP/1000Base-T Gigabit uplink ports
- 802.3af Power over Ethernet (PoE) versions (1224 PoE, 1224ST PoE)
- Non-blocking, up to 8.8 Gbps switching capacity
- 802.1Q tagged and port-based VLANs
- Support for up to 255 active VLANs
- Stack up to 16 and manage stack via a single IP address
- 802.1p and DiffServ prioritization with four queues per egress port
- Link aggregation, GVRP, and LLDP
- MAC-based port security
- Weighted Round Robin (WRR) and Strict Priority Queuing
- 802.1D Spanning Tree and 802.1w Rapid Spanning Tree support
- DHCP address management
- RADIUS authentication
- Port mirroring
- TFTP/FTP firmware upgrades
- Broadcast storm control
- Dual firmware images
- Familiar Command Line Interface (CLI)
- Web-based GUI
- Industry-leading five-year North American warranty

The NetVanta® 1000 Series of managed Ethernet switches is designed for cost-effective Local Area Network (LAN) switching. This scalable, full-featured product line is suitable for networks requiring Layer 2 access switches for interconnecting LAN devices or network segmentation. It is ideal for applications requiring Fast Ethernet and Power over Ethernet (PoE) standards-based 802.3af switch functionality.

### Hardware

The NetVanta 1224 PoE and 1224ST PoE rackmount switches support 24 10/100Base-T Ethernet ports with auto-rate, auto-duplexing, and MDI/MDI-X sensing. The NetVanta 1224ST PoE also supports two 10/100/1000Base-T or Small Form-factor Pluggable (SFP) ports for copper or fiber high-speed uplink or stacking capability. The 1224ST PoE can support up to 16 units stacked together and easily managed with a single IP address for the entire stack.

### Standard-based Protocols

Based on the ADTRAN Operating System (OS), these devices offer support for Link Aggregation (802.3ad), Port Mirroring, Port-based switching features including Broadcast Storm Control, Spanning Tree (802.1D) and Rapid Spanning Tree (802.1w) for faster network convergence, link redundancy, and recovery from topology changes. Link Layer Discovery Protocol (LLDP) auto-discovers neighboring Ethernet devices, simplifying integration into multi-vendor environments.

### VLANs

All NetVanta switches support 802.1Q trunking and up to 255 port-based VLANs to allow network managers to separate broadcast domains for efficient network performance and traffic control. To help aid configuration in larger networks, Generic VLAN Registration Protocol (GVRP) is also available.

### Power over Ethernet

The NetVanta 1224 PoE and 1224ST PoE platforms provide standards-based 802.3af PoE functionality for powering IP phones, Wireless Access Points (WAPs), or other devices requiring LAN power. The products support up to 15.4 watts per port or 370 watts total.

### Security

Rest assured, with the NetVanta 1224 PoE and ST PoE your network is protected. These products also offer a variety of data security features including MAC-based port security, multilevel user passwords, Secure Shell (SSH) and Secure Socket Layer (SSL) for encrypted user login, and Access Authentication and Authorization (AAA) for authentication with a RADIUS or RSA SecurID server.

### Quality of Service (QoS)

NetVanta switches also support QoS to ensure network managers have the ability to prioritize mission critical traffic and control network congestion. The NetVanta 1000 Series offers 802.1p and DiffServ Class of Service (CoS). Each switch supports frame tagging as well as enforcement of tagged traffic received from trusted sources. Four egress queues (per port) are available for assigning traffic priorities using Weighted Round Robin (WRR) or Strict Priority Queuing.

### Administration

The ADTRAN OS offers both a Command Line Interface (CLI) that mimics the widely deployed, industry de facto standard and an intuitive web-based GUI with step-by-step configuration wizards. For a centralized enterprise-wide management scheme, ADTRAN offers n-Command™, an intuitive, scalable software suite for managing firmware revisions, push firmware upgrades and configuration changes, backup and restore configurations, and manage security policies and Access Control Lists (ACLs).

NetVanta 1000 Series of Ethernet switches are easily coupled with other ADTRAN inter-networking products including NetVanta 1000 Series switch-routers, NetVanta 3000/4000/5000 Series Access Routers, and NetVanta 2000 Series VPN/Firewall appliances. All these solutions are backed by ADTRAN's industry-leading support, services, and North American five-year warranty.





**ADTRAN, Inc.**  
Attn: Enterprise Networks  
901 Explorer Boulevard  
Huntsville, AL 35806

P.O. Box 140000  
Huntsville, AL 35814-4000

256 963-8000 voice  
256 963-8699 fax

**General Information**  
800 9ADTRAN  
info@adtran.com  
www.adtran.com

**Pre-Sales Technical Support**  
800 615-1176 toll-free  
application.engineer@adtran.com  
www.adtran.com/support

**Where to Buy**  
877 280-8416 toll-free  
channel.sales@adtran.com  
www.adtran.com/where2buy

**Post-Sales Technical Support**  
888 423-8726  
support@adtran.com  
www.adtran.com/support

**ACES Installation & Maintenance Service**  
888 874-ACES  
aces@adtran.com  
www.adtran.com/support

**International Inquiries**  
256 963 8000 voice  
256 963-6300 fax  
international@adtran.com  
www.adtran.com/international

**For the regional office nearest you, visit:**  
www.adtran.com/regional



ADTRAN is an ISO 9001, ISO 14001, and a TL 9000 certified supplier.

61200580L1-8A 9.1 May 2005  
Copyright © 2005 ADTRAN, Inc.  
All rights reserved.

# NetVanta 1224 PoE/1224ST PoE

## Managed Layer 2, Power over Ethernet, Ethernet Switches

### Product Specifications

#### Physical Interface

##### 24 Fast Ethernet Ports

- 10/100Base-T
- RJ-45
- Auto rate/duplex/MDI/MDI-X

##### Dual Gigabit Ethernet Ports (1224ST PoE)

- Two 10/100/1000Base-T Ports for copper connectivity
- Two SFP slots for optical connectivity

##### Console Port

- DB-9, RS-232

#### Performance

- Non-blocking
- 8,000 MAC addresses
- 16 MB memory shared by all ports

#### Maximum Forwarding Bandwidth

- NetVanta 1224 PoE: 4.4 Gbps
- NetVanta 1224ST PoE: 8.8 Gbps

#### Diagnostics

- Port Mirroring
- LLDP (802.1ab)

#### Front Panel Status LEDs

- Power
- LAN: link, activity, PoE status

#### Security

##### Secure Management

- Multi-level access control
- RADIUS AAA
- SSH CLI and SSL GUI

##### Network Access Control

- Port Authentication (802.1x)
- MAC-based Port Security

#### Port Statistics

- Number of TX/RX Frames
- Number of Collisions
- Number of Errors

#### Spanning Tree Support

- 802.1D Spanning Tree
- 802.1w Rapid Spanning Tree

#### Stacking (1224ST PoE only)

- Single IP Address for Entire Stack
- Up to 16 switches
- Utilizes built-in 1000Base-T or SFP interfaces

#### Link Aggregation

- 802.3ad Link Aggregation
- Support for six trunk groups
- Trunk groups consist of up to eight access ports or two uplink ports

#### Quality of Service

- 802.1p and DiffServ
- Four output queues per egress port
- Weighted Round Robin (WRR) or Strict Priority Queuing

#### VLAN Support

- Port-based VLANs
- 802.1Q tagged trunked VLANs
- Support for up to 255 active VLANs
- Generic VLAN Registration Protocol (GVRP)

#### Storm Control

- Broadcast, Unicast, and Multicast

#### Power over Ethernet

- 802.3af (15.4 watts/port)
- 370 total watts
- Power provided over Ethernet data leads

#### Administration

- Familiar Command Line Interface (CLI)
- Web-based GUI
- n-Command™ support
- SNMP v2
- SYSLOG Logging
- Email Alerts (SMTP)
- Policy Statistics

#### Environment

- Operating temperature: 0° to 50 °C (32° to 122 °F)
- Storage temperature: -20° to 70 °C (-4° to 158 °F)
- Relative humidity: Up to 95%, non-condensing

#### Physical

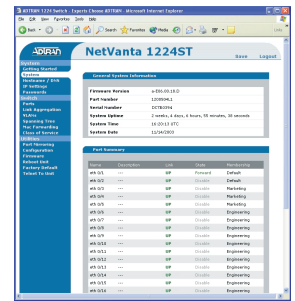
- Chassis: 1U, 19" rackmountable metal enclosure
- Dimensions: 1.7" H, 17.2" W, 12.8" D
- Weight: 12 lbs.
- AC power: 100–250 VAC, 50/60 Hz
- Power: 450 Watts

#### Agency Approvals

- FCC Part 15 Class A, UL 1950/CSA, CE Mark, C-tick

## Ordering Information

Equipment	Part #
NetVanta 1224 PoE	1200580L1
NetVanta 1224ST PoE	1200584L1
NetVanta 1000BaseSX SFP (LC Connectors)	1200480L1
NetVanta 1000BaseLX SFP (LC Connectors)	1200481L1



Web-based GUI



NetVanta 1224 PoE



NetVanta 1224ST PoE



Back Panel

Specifications subject to change without notice. ADTRAN and NetVanta are registered trademarks of ADTRAN, Inc. All registered trademarks and trademarks mentioned in this publication are the property of their respective owners.

## Free Manuals Download Website

<http://myh66.com>

<http://usermanuals.us>

<http://www.somanuals.com>

<http://www.4manuals.cc>

<http://www.manual-lib.com>

<http://www.404manual.com>

<http://www.luxmanual.com>

<http://aubethermostatmanual.com>

Golf course search by state

<http://golfingnear.com>

Email search by domain

<http://emailbydomain.com>

Auto manuals search

<http://auto.somanuals.com>

TV manuals search

<http://tv.somanuals.com>