

User Guide

NAS 2.0 Adapter

(NAS2XU2)

www.addonics.com

v5.1.11

Technical Support

If you need any assistance to get your unit functioning properly, please have your product information ready and contact Addonics Technical Support at:

Hours: 8:30 am - 6:00 pm PST

Phone: 408-453-6212

Email: <http://www.addonics.com/support/query/>

Download from [Www.Somanuals.com](http://www.Somanuals.com). All Manuals Search And Download.

For more detailed information on setting up the NAS2XU2 adapter, refer to the User Manual located on the CD that came with the device.

The NAS 2.0 adapter is a flexible, economical and powerful unit for your Network. Follow the instructions to help you connect, setup, and configure it.

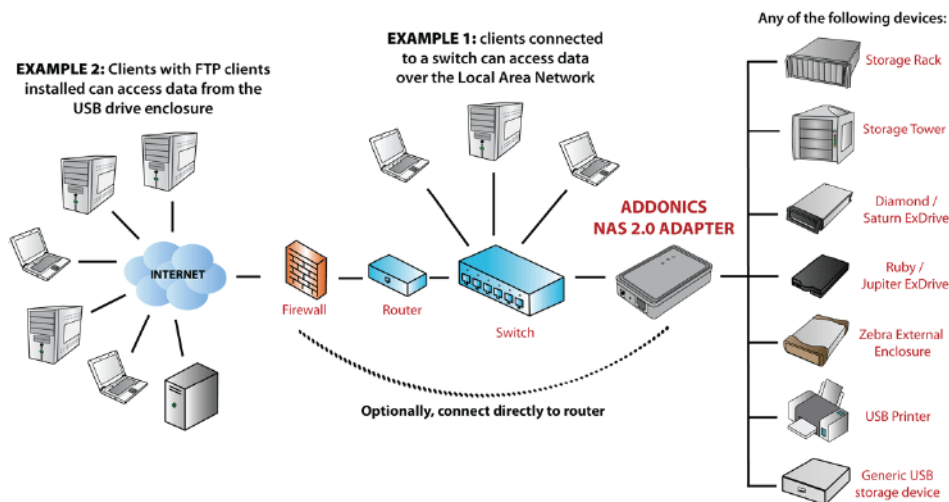
Note: Any external USB storage device that you connect to the NAS 2.0 adapter will initially be required to be formatted. This means, if you are connecting an external USB drive with data on it, the hard drive will be formatted erasing all the information.

Network Environment

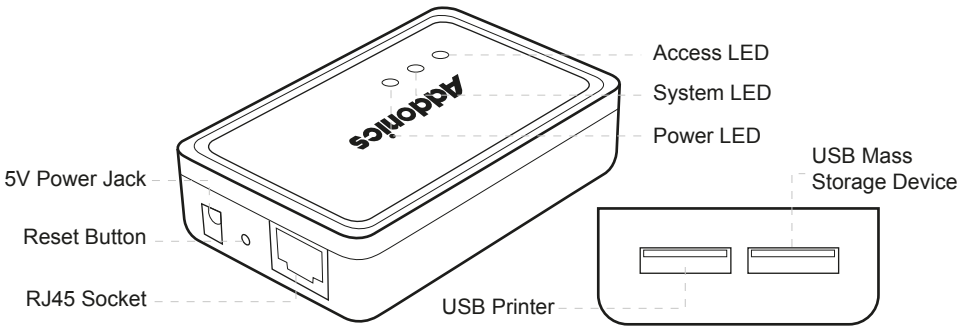
There are 3 different setup conditions you can choose:

- A. Setup NAS2XU2 as a DHCP Client:**
If the NAS2XU2 is connected to a LAN network with an active DHCP server, it will obtain an IP address from DHCP server automatically.
- B. Setup NAS2XU2 as DHCP Server:**
If your LAN network does not have an active DHCP server, the NAS2XU2 will immediately act as DHCP server and assign itself an IP address for installation.
- C. Setup NAS2XU2 in Static IP environment:**
You first need to configure the IP address for NAS2XU2 to operate in the static IP environment. For Configuring details, please refer to "LAN Config" setup page.

Illustration of a NAS2XU2 connected over the network



I. NAS2XU2 Hardware Installation



1. Connect external USB Storage device into USB port of the NAS Adapter. Power on the USB Storage device.
2. Connect LAN cable via LAN switch and Router.
3. Connect 5V power adapter to power up the NAS adapter

NAS2XU2 connected directly to a computer's NIC card

If you connect the NAS2XU2 to a computer directly, the will act as a DHCP server, assigning itself an IP address automatically and will also assign an IP address to the computer's network card. This configuration will not enable you to see the drive on the network.

NAS2XU2 connected to a Router or Switch

When the NAS2XU2 is connected to a LAN network with an active DHCP server, it will obtain an IP address from DHCP server automatically. Or if your LAN network does not have an active DHCP server, NAS2XU2 will immediately act as DHCP server and assign itself an IP address for installation.

II. Search NAS2XU2 using SDisk Utility

1. Browse the CD enclosed in the product package. Copy and paste "SDisk Utility" in to your computer then double click the icon to start search.

Note: "SDisk utility" was written with JAVA script, please make sure your computer has installed JAVA before, if not please install the JAVA JRE from the CD drive.

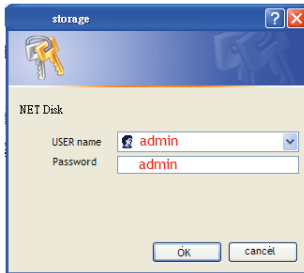


2. When NAS2XU2 has been found, click “Connect” to enter web GUI utility.



Open NAS2XU2 web GUI by using web browser.

1. Open web browser and type default host name “storage” in the search bar.
2. Default login is “admin” for both User name and password. Click “OK” to enter configurations.



Identification

You can change and modify your host, group name and password from this page. Click “Apply” to save the setting.

Host name: This is used to identify your device on the network. If you prefer a different name, type in the new name and click “Apply” to save setting.

Group Name: This should be the same as your workgroup. In general, the default “WORKGROUP” will be OK. But if your workstation belongs to different workgroup, type in the correct group name to modify.

For Window OS, right click on “My computer” and choose “Properties”, go to the computer name tab to see your current workgroup.

If using a Mac OS system, to join a Windows workgroup, open the directory access utility (under Applications-> utilities). Select SMB and click configure to modify the settings (administrator access required to access this option.)

Note: We strongly suggest you to change the password as soon as you logged in, to prevent unauthorized access.

LAN Configuration

By default, "LAN Config" is set to "Automatic IP". This will allow the NAS2XU2 to obtain its IP address automatically. If you prefer setting it manually, select the static IP option, enter your own value and click "Apply" to confirm the new setting.



The screenshot shows the Addonics Technologies NAS 2.0 web interface. The top navigation bar includes the Addonics logo, a row of flags, and the product name "NAS 2.0". The main content area is divided into three sections: "System", "Server", and "LAN Config".

- System**: Includes links for Status, Administration, Time Setting, LAN Config (selected), Disk Tool, and Maintenance.
- Server**: Includes links for File Server, FTP Server, Media Server, Print Server, and P2P Server.
- LAN Config**: Contains the following settings:
 - Automatic IP**: (selected)
 - Static IP as below**:
 - IP Address**: 192.168.1.157
 - Subnet Mask**: 255.255.255.0
 - Gateway**: 192.168.1.1
 - Primary DNS**: 192.168.1.1
 - Secondary DNS**: 0.0.0.0
 - Apply** button
- DHCP Config**:
 - DHCP Status**: Disable
 - DHCP Server**: Enable Disable
 - Apply** button
- MAC Address**: 00.B3.F4.00.00.30
- PPPoE**:
 - WAN IP**: 0.0.0.0
 - Set** button

Disk Utility

In this page, you can manage hard disk settings of the USB storage device.

Format: For first time installation, you need to format hard disk into FAT32 file system. Formatting the drive will erase all data on the hard drive.

Warning: For hard drives with data on it, create a backup before proceeding to format the hard drive!

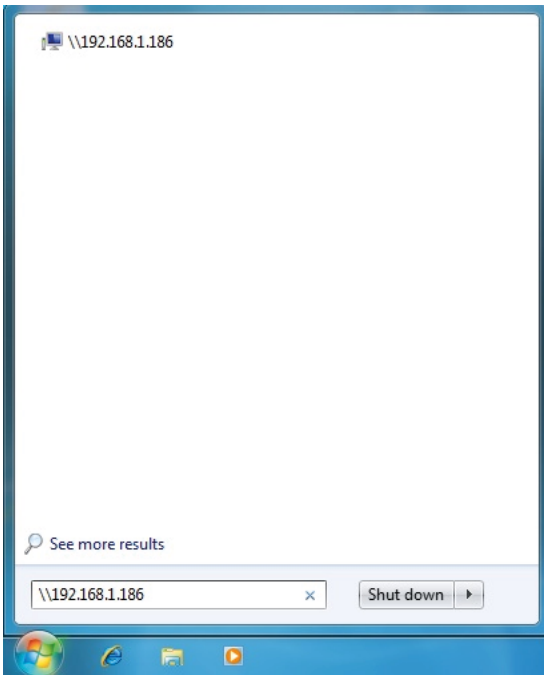
Tip: You can transfer back the backup data to the NAS Public folder for sharing via the network or USB connection of the USB Storage device.

Scan Disk: After the scan, it will show file content information and health status for the hard disk.

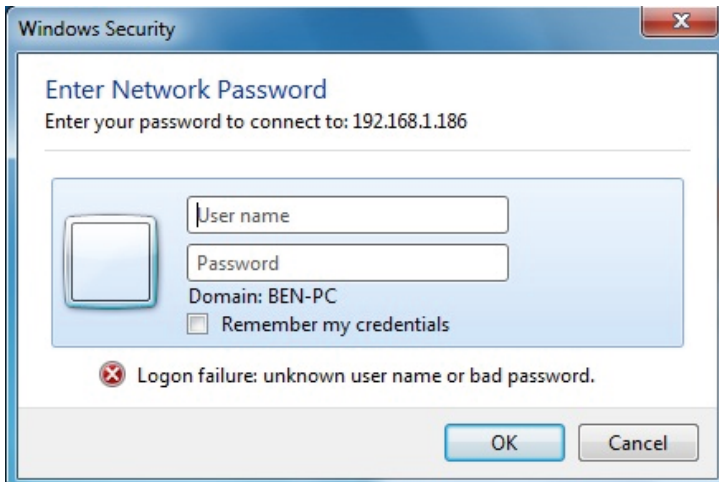
To access Samba PUBLIC folder of NAS2XU2 in Windows

Click on the Windows icon located on the bottom left corner of the screen, on the "Search programs and files" \\ followed by the IP address.

Eg: \\192.168.1.121 and press Enter key to continue.



Type “Guest” as username. Leave password empty. Click on OK. This will direct you to the Public folder on the NAS drive.



Now you have set up the folder that you wish to share on your NAS . This folder can be access from other computer on your local network.

To list the NAS drive in Network Places

Go to Network Places in Windows XP, under Network Tasks, click on the "Set up a home or small office network". Follow the wizard and once completed, reboot your system.

For Vista and Windows 7, enable file sharing when accessing the NAS over the network.

To access Samba PUBLIC folder of NAS2XU2 in Ubuntu 8.04

First, using the console get the prerequisites for the samba file system:

```
$ sudo aptitude install samba smbfs
```

```
$ mkdir /mnt/NAS
```

```
$ sudo mount.cifs //NAS__IP_address/Public /mnt/NAS -o username=Guest
```

To access Samba PUBLIC folder of NAS2XU2 in Mac OS X

1. Start at the "Go" drop down menu at the top of your screen, then click "Connect to server".
2. Type into the "Server Address" field 'smb://' followed by the IP address of the NAS2XU2 you want to connect.
3. Click the "Connect" button in the bottom right corner of the window.
4. Enter in a username and password. Click the "OK" button in the bottom right hand corner of the window to finish.

Note: The workgroup name needs to be the workgroup the PC belongs to. If you don't know the workgroup that the PC belongs to you can find out by right clicking on the "My Computer" desktop icon on the PC, selecting "Properties" and then selecting the "Computer Name" tab. The work group name is about half way down the window.

5. Select the "share" you are after. This simply refers to a particular group of shared files. Click "OK".

CONTACT US

www.addonics.com

Phone: 408-573-8580

Fax: 408-573-8588

Email: <http://www.addonics.com/sales/query/>

Free Manuals Download Website

<http://myh66.com>

<http://usermanuals.us>

<http://www.somanuals.com>

<http://www.4manuals.cc>

<http://www.manual-lib.com>

<http://www.404manual.com>

<http://www.luxmanual.com>

<http://aubethermostatmanual.com>

Golf course search by state

<http://golfingnear.com>

Email search by domain

<http://emailbydomain.com>

Auto manuals search

<http://auto.somanuals.com>

TV manuals search

<http://tv.somanuals.com>