



User Manual

PCM-3362

**PC/104-plus SBC with
Intel[®] Atom[™] N450, VGA, LCD,
LAN, USB2.0, SATA, and
on-board flash**

Trusted ePlatform Services

ADVANTECH

Copyright

The documentation and the software included with this product are copyrighted 2009 by Advantech Co., Ltd. All rights are reserved. Advantech Co., Ltd. reserves the right to make improvements in the products described in this manual at any time without notice. No part of this manual may be reproduced, copied, translated or transmitted in any form or by any means without the prior written permission of Advantech Co., Ltd. Information provided in this manual is intended to be accurate and reliable. However, Advantech Co., Ltd. assumes no responsibility for its use, nor for any infringements of the rights of third parties, which may result from its use.

Acknowledgements

AMI is a trademark of American Megatrends, Inc.

IBM, PC/AT, PS/2 and VGA are trademarks of International Business Machines Corporation.

Atom, Pentium, Celeron, and MMX are registered trademarks of Intel Corporation. Microsoft Windows® is a registered trademark of Microsoft Corp.

RTL is a trademark of Realtek Semi-Conductor Co., Ltd. ESS is a trademark of ESS Technology, Inc.

UMC is a trademark of United Microelectronics Corporation.

SMI is a trademark of Silicon Motion, Inc.

Creative is a trademark of Creative Technology LTD.

All other product names or trademarks are properties of their respective owners.

For more information on this and other Advantech products, please visit our websites at:

<http://www.advantech.com>

<http://www.advantech.com/eplatform>

For technical support and service, please visit our support website at:

<http://www.advantech.com/support>

This manual is for the PCM-3362.

Packing List

Before you begin installing your card, please make sure that the following materials have been shipped:

- 1 x PCM-3362 SBC
- 1 x SATA data cable (p/n: 1700071000)
- 1 x SATA power cable (p/n: 1703150102)
- 1 x Keyboard/Mouse cable (p/n: 1703060053)
- 1 x Y cable for KB/MS extension (p/n: 1700060202)
- 1 x Ethernet RJ-45 Conn. conversion cable (p/n: 1700017863)
- 1 x VGA cable (p/n: 1700000898)
- 1 x USB cable (bracket type with two USB ports) (p/n: 1703100260)
- 1 x RS-422/485 COM cable (p/n: 1703040157)
- 1 x RS-232 COM cable (p/n: 1701200220)
- 1 x ATX Power cable (p/n: 1700002332)
- 1 x AT Power cable (p/n: 1700003491)
- 1 x Startup manual
- 1 x CD-ROM (Manual, Driver, Utility)

If any of these items are missing or damaged, contact your distributor or sales representative immediately.

Model No.	List	Description
PCM-3362N-S6A1E		Intel Atom N450 PC/104-Plus SBC, VGA, LVDS, LAN, USB, SATA and on-board flash

Optional Accessory

- 1 x heatspreader (p/n:1960047106T001)

Additional Information and Assistance

1. Visit the Advantech web site at www.advantech.com where you can find the latest information about the product.
2. Contact your distributor, sales representative, or Advantech's customer service center for technical support if you need additional assistance. Please have the following information ready before you call:
 - Product name and serial number
 - Description of your peripheral attachments
 - Description of your software (operating system, version, application software, etc.)
 - A complete description of the problem
 - The exact wording of any error messages

Declaration of Conformity

This device complies with the requirements in part 15 of the FCC rules: Operation is subject to the following two conditions:

1. This device may not cause harmful interference, and

-
2. This device must accept any interference received, including interference that may cause undesired operation

FCC Class A

This equipment has been tested and found to comply with the limits for a Class A digital device, pursuant to part 15 of the FCC Rules. These limits are designed to provide reasonable protection against harmful interference when the equipment is operated in a commercial environment. This equipment generates, uses, and can radiate radio frequency energy and, if not installed and used in accordance with the instruction manual, may cause harmful interference to radio communications. Operation of this equipment in a residential area is likely to cause harmful interference in which case the user will be required to correct the interference at his own expense.

Caution! *There is a danger of a new battery exploding if it is incorrectly installed. Do not attempt to recharge, force open, or heat the battery. Replace the battery only with the same or equivalent type recommended by the manufacturer. Discard used batteries according to the manufacturer's instructions.*



Contents

Chapter 1 General Information1

1.1	Introduction	2
1.2	Features	2
1.3	Specifications	2
1.3.1	Standard PC/104-plus Biscuit SBC Functions	2
1.3.2	VGA/LVDS Interface	3
1.3.3	Ethernet Interface	3
1.3.4	OS support.....	3
1.3.5	Mechanical and Environmental.....	3
1.4	Board layout: dimensions.....	4
	Figure 1.1 Board layout: Dimensions (Component Side)	4
	Figure 1.2 Board layout: Dimensions (Solder Side).....	5

Chapter 2 Hardware Installation7

2.1	Jumpers	8
	Table 2.1: Jumpers	8
2.2	Connectors.....	8
	Table 2.2: Connectors	8
2.3	Locating Connectors & block diagram	9
	Figure 2.1 Connectors (component side)	9
	Figure 2.2 Connectors (solder side)	9
	Figure 2.3 Block diagram.....	10
2.4	Setting Jumpers	10
2.4.1	Clear CMOS (JP1).....	11
	Table 2.3: Clear CMOS (JP1).....	11
2.4.2	LVDS Panel Power Select (JP2).....	11
	Table 2.4: LVDS Panel Power Select (JP2)	11
2.4.3	COM3 RS422/RS485 Select (JP3).....	12
	Table 2.5: COM3 RS422/RS485 Select (JP3).....	12
2.4.4	PCI I/O Voltage Select (JP4)	12
	Table 2.6: PCI I/O Voltage Select (JP4)	12
2.5	Installing SODIMMs	12
2.6	Flash	12
2.7	High Definition Audio Interface (CN1)	13
2.8	VGA/LCD interface connections	13
	2.8.1 CRT display connector (CN8).....	13
	2.8.2 LVDS connector (CN6).....	13
	2.8.3 Panel Inverter Power (CN7).....	13
2.9	USB connectors (CN9 & CN10).....	13
2.10	Front Panel Connector (CN12)	13
2.11	Buzzer Connector (CN13).....	14
2.12	SATA Connector (CN15).....	14
2.13	COM port connector (CN16 & CN17).....	14
	2.13.1 Serial Port RS-422/485 (CN17)	14
2.14	Giga LAN Connector (CN18)	14
	2.14.1 LAN LED Connector (CN19).....	14
2.15	Keyboard and PS/2 mouse connector (CN20).....	14
2.16	GPIO Connector (CN21)	15
2.17	ATX Power in connector (CN23).....	15
2.18	Power Connectors (CN24)	15
2.19	I2C Bus connector (CN25).....	15
2.20	-12 V & -5 V power connector (CN26)	15
2.21	Watchdog timer configuration	15

Chapter 3 AMI BIOS Setup..... 17

	Figure 3.1 Setup program initial screen.....	18
3.1	Entering Setup.....	18
3.2	Main Setup.....	18
	Figure 3.2 Main setup screen.....	19
3.2.1	System time / System date.....	19
3.3	Advanced BIOS Features Setup.....	19
	Figure 3.3 Advanced BIOS features setup screen.....	20
3.3.1	CPU Configuration.....	20
	Figure 3.4 CPU Configuration Setting.....	20
3.3.2	IDE Configuration.....	21
	Figure 3.5 IDE Configuration.....	21
3.3.3	Super I/O Configuration.....	22
	Figure 3.6 Super I/O Configuration.....	22
3.3.4	Hardware Health Configuration.....	22
	Figure 3.7 Hardware health configuration.....	22
3.3.5	ACPI Settings.....	23
	Figure 3.8 ACPI Settings.....	23
	Figure 3.9 General ACPI Configuration.....	23
	Figure 3.10Advanced ACPI Configuration.....	24
	Figure 3.11Chipset ACPI Configuration.....	24
3.3.6	AHCI Configuration.....	25
	Figure 3.12Advanced ACPI Configuration.....	25
3.3.7	APM Configuration.....	26
	Figure 3.13APM Configuration.....	26
3.3.8	Event Log Configuration.....	27
	Figure 3.14South Bridge ACPI Configuration.....	27
3.3.9	MPS Configuration.....	27
	Figure 3.15South Bridge ACPI Configuration.....	27
3.3.10	Smbios Configuration.....	28
	Figure 3.16South Bridge ACPI Configuration.....	28
3.3.11	USB Configuration.....	28
	Figure 3.17South Bridge ACPI Configuration.....	28
	Figure 3.18USB Mass storage Device Configuration.....	29
3.4	Advanced PCI/PnP Settings.....	29
	Figure 3.19PCI/PNP Setup (top).....	30
3.5	Boot Settings.....	31
	Figure 3.20Boot Setup Utility.....	31
3.5.1	Boot settings Configuration.....	31
	Figure 3.21Boot Setting Configuration.....	31
3.6	Security Setup.....	32
	Figure 3.22Password Configuration.....	32
3.7	Advanced Chipset Settings.....	33
	Figure 3.23Advanced Chipset Settings.....	33
3.7.1	North Bridge Chipset Configuration.....	33
	Figure 3.24North Bridge Configuration.....	33
	Figure 3.25Video function configuration.....	34
3.7.2	South Bridge Chipset Configuration.....	34
	Figure 3.26South Bridge Configuration.....	34
3.8	Exit Option.....	35
	Figure 3.27Exit Option.....	35
3.8.1	Save Changes and Exit.....	35
3.8.2	Discard Changes and Exit.....	36
3.8.3	Load Optimal Defaults.....	36
3.8.4	Load Fail-Safe Defaults.....	36

Chapter	4	Software Introduction & Installation	37
	4.1	S/W Introduction.....	38
	4.2	Driver Installation	38
	4.2.1	Windows XP professional	38
	4.2.2	Other OS.....	38
	4.3	Value-Added Software Services	38
	4.3.1	SUSI Introduction.....	38
	4.3.2	Software APIs	39
	4.3.3	SUSI Utilities	40
	4.3.4	SUSI Installation	40
	4.3.5	SUSI Sample Programs.....	42
Chapter	5	Chipset Software Installation Utility.....	49
	5.1	Before You Begin	50
	5.2	Introduction	50
	5.3	Windows XP/Vista/Win7 Driver Setup.....	50
Chapter	6	Integrated Graphic Device Setup	51
	6.1	Introduction	52
	6.2	Windows XP/ Vista /Win7 Driver Setup.....	52
Chapter	7	LAN Configuration.....	53
	7.1	Introduction	54
	7.2	Installation	54
	7.3	Windows XP/ Vista /Win7 Driver Setup.....	54
Appendix A		Pin Assignments	55
	A.1	Jumper and Connector Tables.....	56
Appendix B		System Assignments	65
	B.1	System I/O Ports	66
		Table B.1: System I/O ports	66
	B.2	1st MB Memory Map	66
		Table B.2: 1st MB memory map	66
	B.3	DMA channel assignments	66
		Table B.3: DMA channel assignments.....	66
	B.4	Interrupt assignments.....	67
		Table B.4: Interrupt assignments	67
Appendix C		Mechanical Drawings	69
	C.1	Board Mechanical Drawings	70
		Figure C.1 PCM-3362 Mechanical Drawing (Component Side). 70	
		Figure C.2 PCM-3362 Mechanical Drawing (Solder Side).....	71
	C.2	Heatsink Mechanical Drawings	72
		Figure C.3 PCM-3362N Heatsink Mechanical Drawing	72
		Figure C.4 PCM-3362Z/Z2 Heatsink Mech Dwg, wide temp.....	72
	C.3	Optional Heat spreader Mechanical Drawings.....	73
		Figure C.5 PCM-3362 optional Heatspreader Mech Drawing	73

Appendix D

Watchdog Timer and GPIO sample code..... 75

D.1	Watchdog Timer sample code	76
D.2	GPIO sample code.....	77

Chapter 1

General Information

This chapter gives background information on the PCM-3362.

Sections include:

- Introduction
- Features
- Specifications
- Board layout and dimensions

1.1 Introduction

The PCM-3362 is a fanless, low power, small size (96X90mm), performance PC/104-plus SBC (Single Board Computer) geared to satisfy the needs for various industrial computing equipment. PCM-3362 is ideal for communication, environment monitoring, factory automation, military, and medical applications that require flat panel support using digital displays with LVDS interfaces and single Ethernet ports.

For those who want superior performance for various low-power embedded applications, PCM-3362 uses an Intel® Atom™ N450 processor, supporting DDRII 667 SDRAM up to 2GB.

PCM-3362 has an integrated graphic core of Intel® Embedded Gen3.5+ graphic technology with 224 MB shared memory. This feature makes PCM-3362 is capable of handling complex and intense 2D/3D graphic processing, its VGA and LVDS dual video outputs also make it suitable for applications requiring dual display or digital panel display capabilities.

PCM-3362 offers convenient connector layout, easy assembly, multiple I/Os, and includes a single 10/100/1000 Mbps Ethernet, four USB (Universal Serial Bus) 2.0, one SATA2 interface, 8-bit general purpose Input/Output, two RS-232 serial ports and one RS-422/485 serial port for easy system expansibility. PC/104-plus self-stacking rugged mechanical architecture and extended temperature operation makes it ideal for outdoor applications in the military and transportation fields.

Supported operating systems include Windows 7, Windows XP, XP Embedded, Windows CE, and Linux. PCM-3362 also offers drivers and APIs for application development including I²C, GPIO, watchdog timer, hardware monitor, panel backlight on/off, and brightness control.

1.2 Features

- Intel® Atom™ N450 Processor
- Supports DDR2 667 memory
- Supports 18-bit LVDS LCD interface
- Supports 1 X SATA2 interface
- Supports 2GB on-board flash
- Supports 1 x 10/100/1000 Mbps Fast Ethernet
- Supports four USB2.0 ports
- Supports two serial RS-232 ports (COM1/2), one RS-422/485 port(COM3)
- PC/104-plus expansion interface

1.3 Specifications

1.3.1 Standard PC/104-plus Biscuit SBC Functions

- CPU: Intel® Atom™ N450 processor, up to 1.67 GHz
- System Memory: supports Double Data Rate (DDR) DDR2 667 SDRAM up to 2GB

Note! PCM-3362 cannot support DDR2 533 SDRAM.



- **2nd Cache Memory:** 512 KB on the processor
- **System Chipset:** Intel® ICH8M
- **BIOS:** AMI 16Mbit Flash BIOS
- **Watchdog timer:** 255 levels timer interval
- **Expansion Interface:** PC/104-Plus (ISA and PCI bus)
- **Battery:** Lithium 3V/210 mAH
- **Power management:** ACPI supported
- **Serial ATA:** One Serial ATA2 interface, Speed up to 300MB/s
- **Flash:** On board 2GB flash (IDE interface)
- **Serial ports:** Two serial RS-232 ports (COM1/2), one RS-422/485 port(COM3)
- **Keyboard/mouse connector:** Supports one standard PC/AT keyboard and a PS/2 mouse
- **USB:** Four USB 2.0 ports compliant universal serial bus ports
- **GPIO:** 8 bit general purpose Input/Output
- **High Definition Audio:** PCM-3362 can provide audio function with the optional audio extension module PCA-AUDIO-HDA1E and specific audio cable.

1.3.2 VGA/LVDS Interface

- **Controller:** Integrated graphic core of Embedded Gen3.5+ technology
- **VRAM:** 224 MB shared system memory
- **Output Interfaces:**
 - VGA: Supports up to SXGA 1400 x 1060 @ 60Hz
 - LVDS: Single channel 18-bit LVDS up to WXGA 1366 x 768
 - Dual Display: CRT + LVDS, support extended mode and clone mode

1.3.3 Ethernet Interface

- Supports Single 10/100/1000 Mbps Ethernet networking
- **Controller:** Intel® 82567V

1.3.4 OS support

This board supports Win7, Win XP, Win CE and Win XPe.

For further information about OS support in your PCM-3362, visit the following Advantech web resource: www.advantech.com or please contact your technical support center.

1.3.5 Mechanical and Environmental

- **Dimensions:** 96 x 90 mm (3.8" x 3.5") Mechanical Drawing (dxf file) is available.
- **Power Supply Type:** AT/ATX
- **Power Requirement:** +5 V ± 5%, +12 V ± 5% (Optional), (5 V only, 12 V optional for PC104 add on card and LCD inverter)
- **Power Consumption:** (Intel® Atom™ N450, 1GB DDRII 667)
 - Power on Load: +5 V @ 2.28 A, +12 V @ 5mA
 - Max load: +5 V @ 2.37 A, +12 V @ 7mA
 - Idle mode: +5 V @ 2 A, +12 V @ 5mA
- **Power Consumption Conditions:**
 - Test software: Maxpower + 3DMark 2005

- Power on - Boot: Measure the maximum current value of between system power on and boot-up to O.S.
- Max. load: Measure the maximum current value which system under maximum load (CPU: Top speed, RAM & Graphic: Full loading)
- Idle mode: Measure the current value when system in windows mode and without running any program
- **Operating temperature:** 0 ~ 60°C (32 ~ 140°F) (operation humidity: 40°C @ 85% RH Non-Condensing)
- **Weight:** 0.85 kg (reference weight of total package)

1.4 Board layout: dimensions

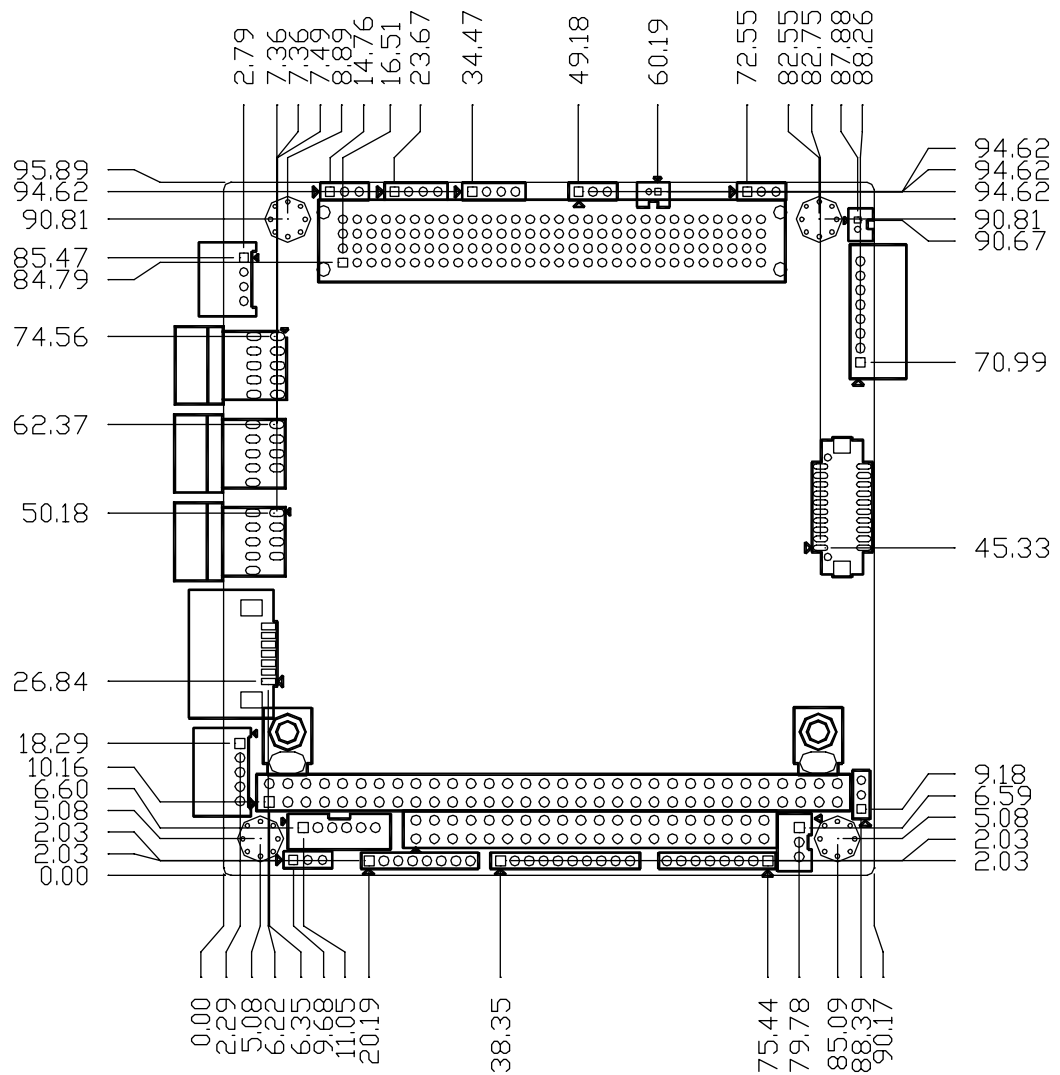


Figure 1.1 Board layout: Dimensions (Component Side)

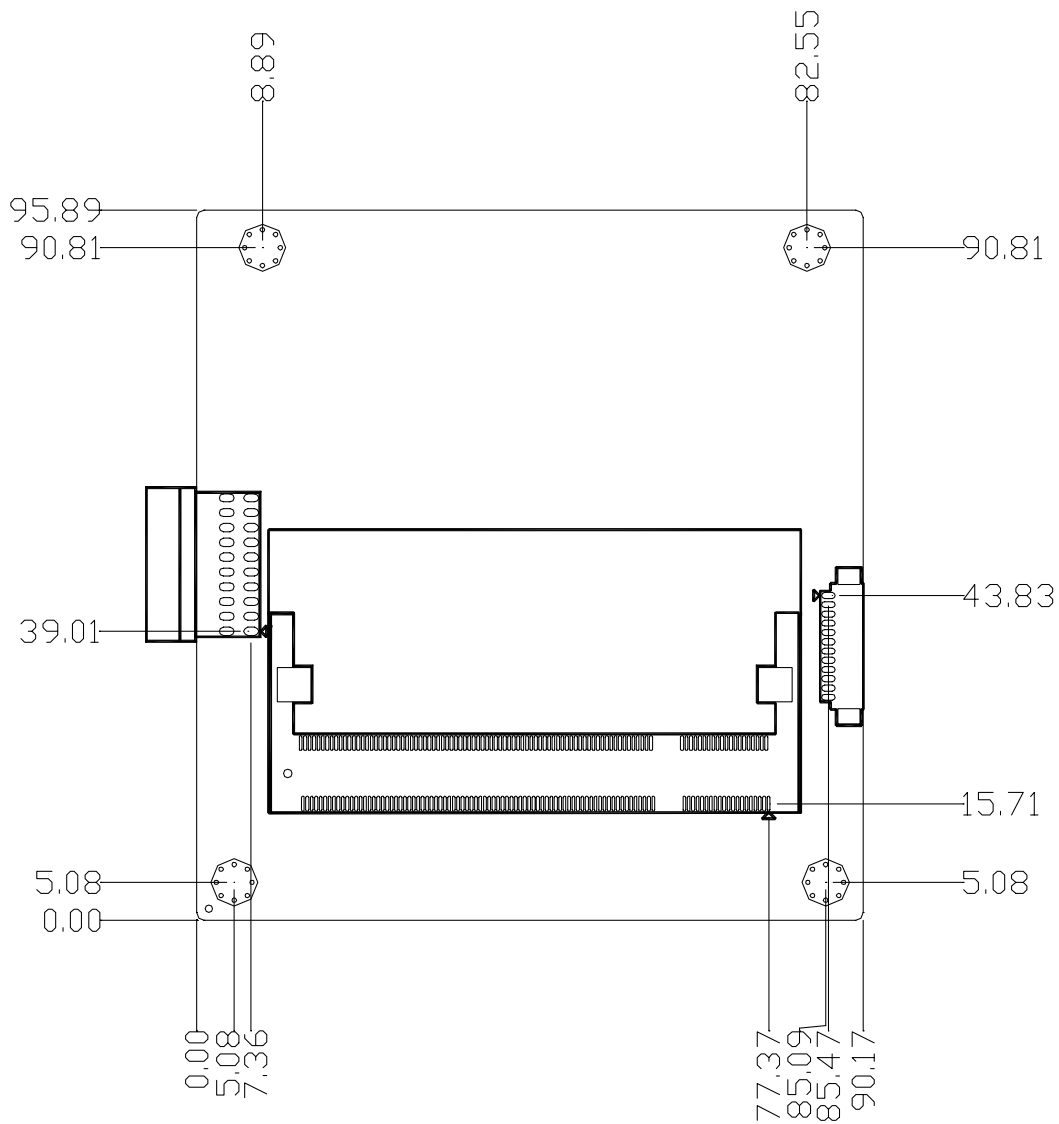


Figure 1.2 Board layout: Dimensions (Solder Side)

Chapter 2

Hardware Installation

This chapter explains the setup procedures of the PCM-3362 hardware, including instructions on setting jumpers and connecting peripherals, switches and indicators. Be sure to read all safety precautions before you begin the installation procedure.

2.1 Jumpers

The PCM-3362 has a number of jumpers that allow you to configure your system to suit your application. The table below lists the functions of the various jumpers.

Table 2.1: Jumpers

JP1	CLEAR CMOS
JP2	LVDS Panel Power Select
JP3	COM3 RS422/RS485 Select
JP4	PCI I/O Voltage Select

2.2 Connectors

Onboard connectors link the PCM-3362 to external devices such as hard disk drives, a keyboard, or floppy drives. The table below lists the function of each of the board's connectors.

Table 2.2: Connectors

Label	Function
CN1	HD Audio Connector
CN4	SO-DIMM Connector
CN6	LVDS Connected
CN7	Panel Inverter Connector
CN8	VGA Connector
CN9	USB Port0/1 Connector
CN10	USB Port2/3 Connector
CN12	Front panel Connector
CN13	Buzzer Connector
CN15	SATA Connector
CN16	COM1~COM2 Connector
CN17	RS422/485 Connector
CN18	LAN Connector
CN19	LAN LED Connector
CN20	PS2 Keyboard/Mouse Connector
CN21	GPIO Connector
CN23	ATX Power In Connector
CN24	Power In Connector
CN25	I2C BUS connector
CN26	-12 V & -5 V power connector
P1	PC104-plus Connector
BH1	RTC Battery Connector

2.3 Locating Connectors & block diagram

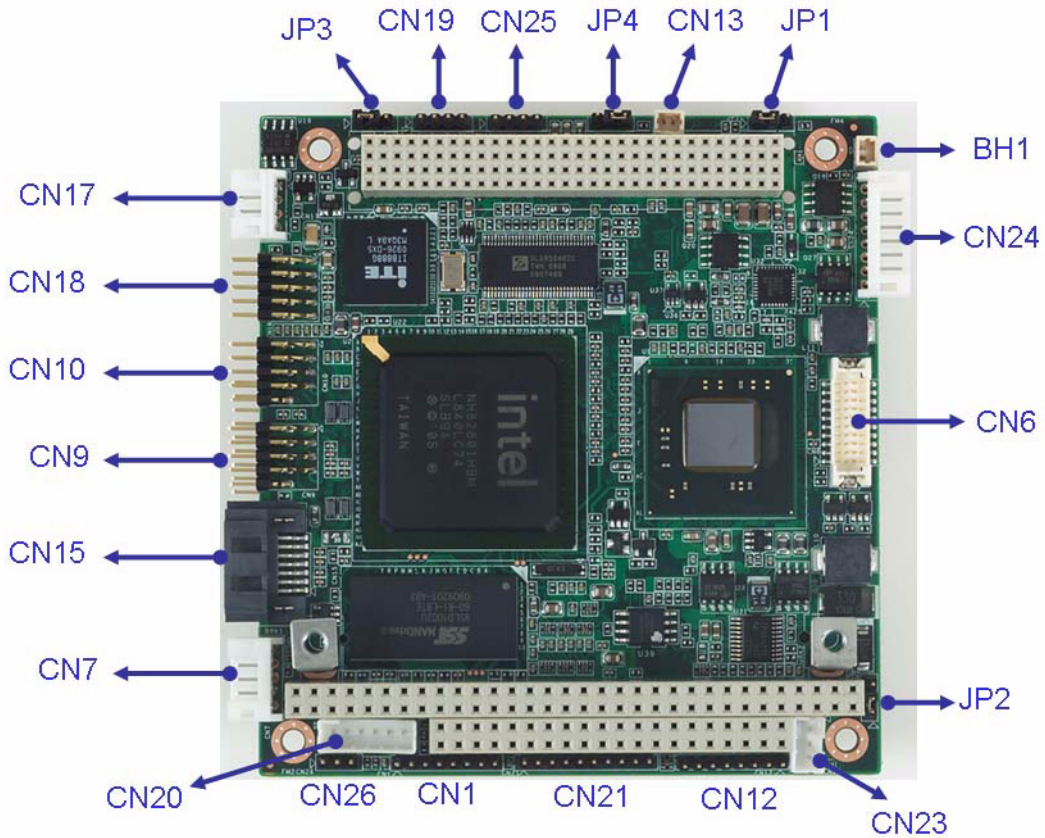


Figure 2.1 Connectors (component side)

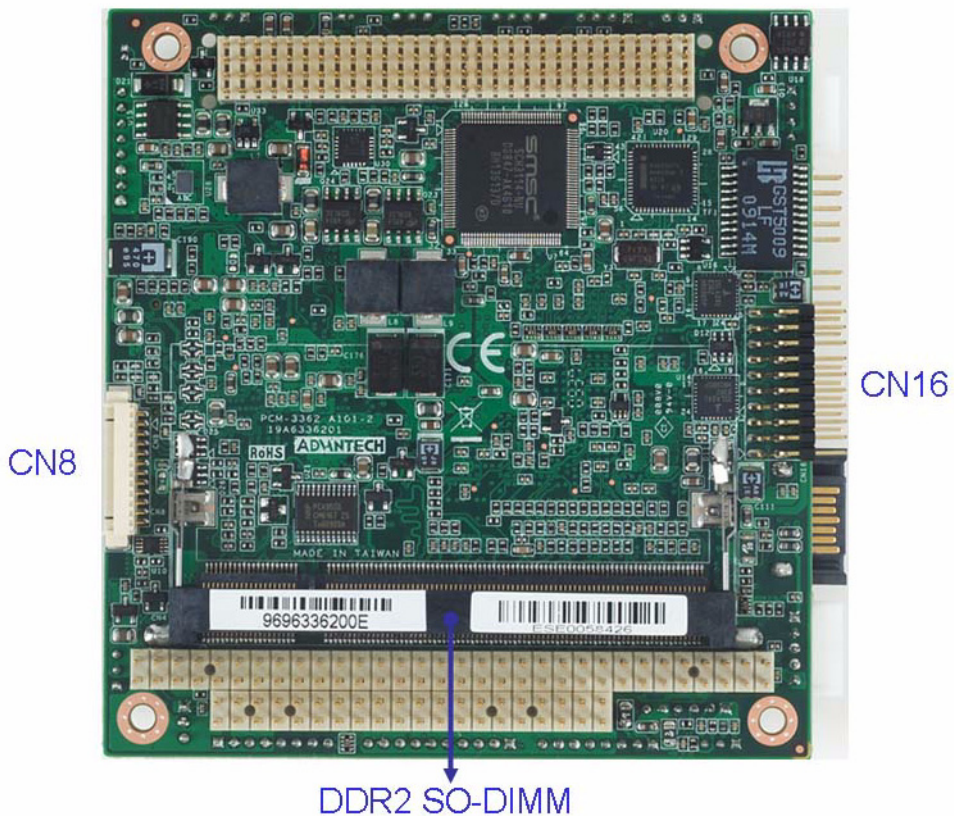


Figure 2.2 Connectors (solder side)

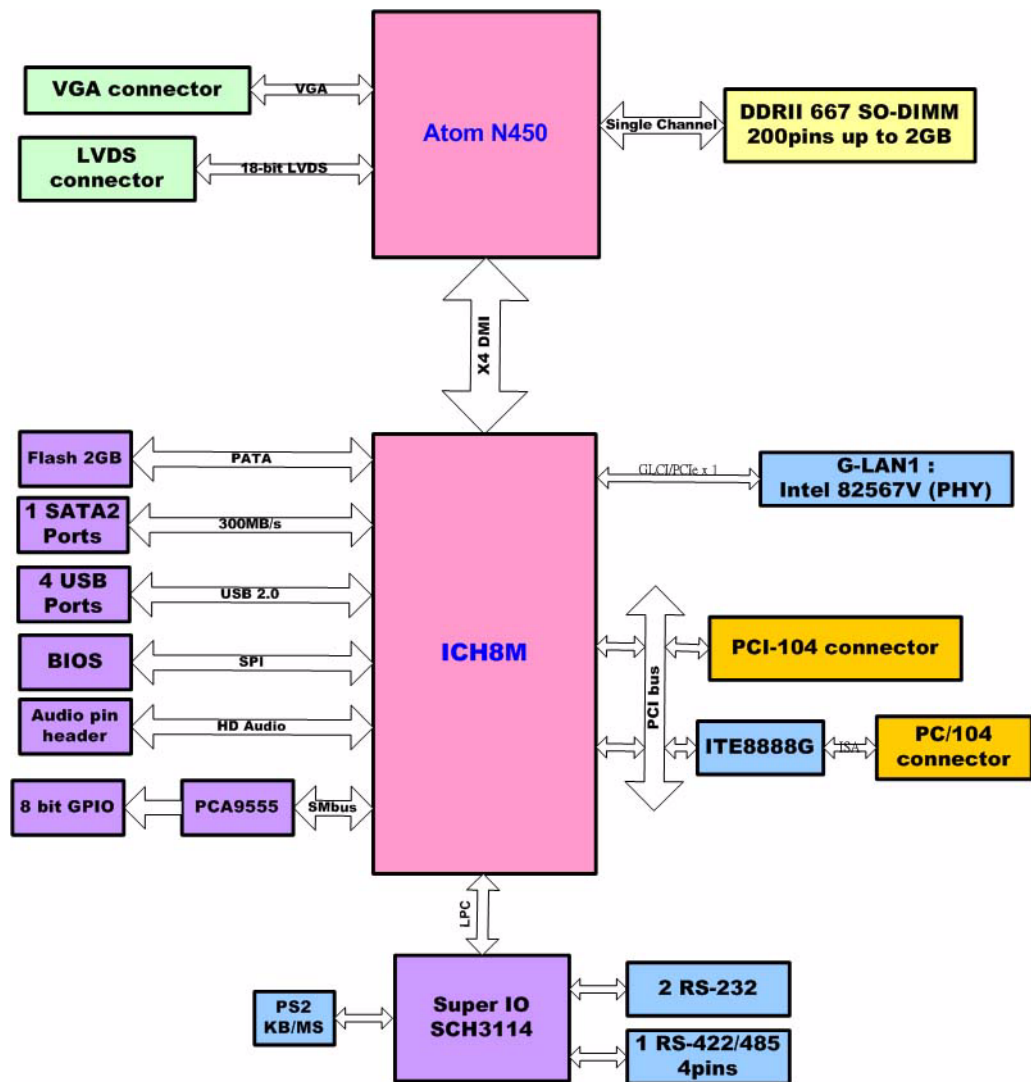
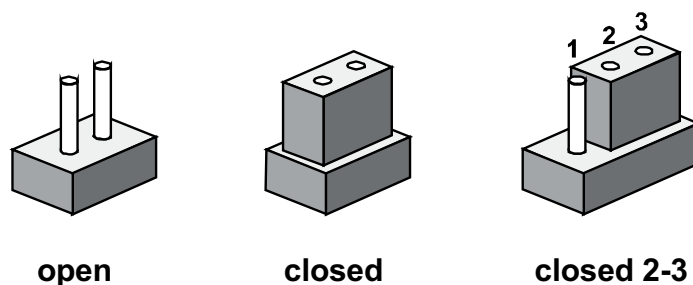


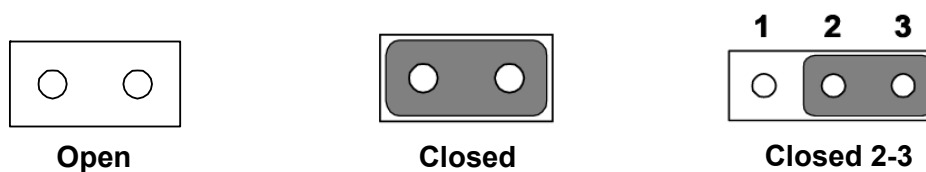
Figure 2.3 Block diagram

2.4 Setting Jumpers

You may configure your card to match the needs of your application by setting jumpers. A jumper is a metal bridge used to close an electric circuit. It consists of two metal pins and a small metal clip (often protected by a plastic cover) that slides over the pins to connect them. To “close” a jumper, you connect the pins with the clip. To “open” a jumper, you remove the clip. Sometimes a jumper will have three pins, labeled 1, 2 and 3. In this case you would connect either pins 1 and 2, or 2 and 3.



The jumper settings are schematically depicted in this manual as follows:



A pair of needle-nose pliers may be helpful when working with jumpers. If you have any doubts about the best hardware configuration for your application, contact your local distributor or sales representative before you make any changes. Generally, you simply need a standard cable to make most connections.

2.4.1 Clear CMOS (JP1)

The PCM-3362 single board computer contains a jumper that can erase CMOS data and reset the system BIOS information. Normally this jumper should be set with pins 1-2 closed. If you want to reset the CMOS data, set CMOS1 to 2-3 closed for just a few seconds, and then move the jumper back to 1-2 closed. This procedure will reset the CMOS to its default setting.

Warning! To avoid damaging the computer, always turn off the power supply before clearing CMOS.



Table 2.3: Clear CMOS (JP1)

Setting	Function
1-2	Normal (default)
2-3	Clear CMOS

2.4.2 LVDS Panel Power Select (JP2)



Table 2.4: LVDS Panel Power Select (JP2)

Setting	Function
1-2	5 V
2-3	3.3 V (default)

2.4.3 COM3 RS422/RS485 Select (JP3)



Table 2.5: COM3 RS422/RS485 Select (JP3)

Setting	Function
1-2	RS-485 (default)
2-3	RS-422

2.4.4 PCI I/O Voltage Select (JP4)

The PCI Host board will always determine the PCI signaling level on the bus by setting all VI/O pins to either 3.3 V or 5 V. If VI/O is set to 3.3 V, then the system will use 3.3 V I/O signaling, likewise, if VI/O is set to 5 V, then the system will use 5 V I/O signaling. Some PCI host modules may only allow one of the options, while others may provide a jumper to allow the user to select the signaling level. Once the signaling level is selected, the remaining boards in the system must use that signaling level.



Table 2.6: PCI I/O Voltage Select (JP4)

Setting	Function
1-2	5 V (default)
2-3	3.3 V

2.5 Installing SODIMMs

The procedures for installing SODIMMs are described below. Please follow these steps carefully. You can install SDRAM memory modules using 200-pin SODIMMs (Small Outline Dual In-line Memory Modules).

1. Ensure that all power supplies to the system are switched off.
2. Tilt the SODIMM card just above the board and slide it into the housing card slot.
3. Push the module into the socket until the module gently snaps in. There should only be a slight insertion force to engage the module into the contacts. Make sure that the module and the housing are aligned and locked in place.

2.6 Flash

The board provides onboard NAND Flash memory to replace CF socket. NANDrive™ integrated circuits (IC) are high-performance, fully-integrated, embedded flash solid state drives. They combine an integrated ATA Controller in a multi-chip package. These products are ideal for industrial grade solid state mass storage applications offering new and expanded functionality while enabling cost effective designs.

PCM-3362 supports 2GB industrial grade NAND NANDrive™ IC and up to 4GB for option. Flash endurance is about 100 Million write cycles. Data Retention is about 10 Years. PCM-3362's NANDrive™ IC supports up to Ultra DMA Mode-4 and endures in wide temperature range of -40°C to +85°C for industrial operation.

2.7 High Definition Audio Interface (CN1)

The PCM-3362 provides high definition audio interface. It can support high definition audio stereo by customized audio module that has codec onboard or by Advantech's PCA-AUDIO-HDA1E module through specific cable.

2.8 VGA/LCD interface connections

The PCM-3362's VGA interface can drive conventional CRT displays and is capable of driving a wide range of LVDS flat panel displays. The board has two connectors to support these displays: one for standard CRT VGA monitors, one for LVDS type LCD panels.

2.8.1 CRT display connector (CN8)

CN8 is a 12-pin, dual-inline header used for conventional CRT displays. A simple one-to-one adapter can be used to match CN8 to a standard 15-pin D-SUB connector commonly used for VGA. Users can drive a standard progressive scan analog monitor with pixel resolution up to SXGA 1400 x 1060 @ 60Hz. Pin assignments for CRT display connector CN8 are detailed in Appendix A.

2.8.2 LVDS connector (CN6)

The PCM-3362 uses the Intel Atom N450 that supports single -channel 18-bit LVDS panel up to WXGA 1366 x 768 UXGA panel resolution.

2.8.3 Panel Inverter Power (CN7)

The LCD inverter is connected to CN7 via a 5-pin connector to provide +5 V/+12 V power to the LCD display. JP2 provides inverter voltage selection function, closing Pin 1, 2 is for 5 V power input inverter; closing Pin 2, 3 is for 3.3 V power input inverter.

2.9 USB connectors (CN9 & CN10)

The board provides up to four USB (Universal Serial Bus) ports using Plug and Play. The USB interfaces comply with High Speed USB specification Rev. 2.0 which supports 480 Mbps transfer rate, and are fuse protected.

The USB interface is accessed through two 5 x 2-pin pin header connectors. You will need an adapter cable if you use a standard USB connector. The adapter cable has a 5 x 2-pin connector on one end and a USB connector on the other. The USB interfaces can be disabled in the system BIOS setup.

2.10 Front Panel Connector (CN12)

You may want to install external switches to monitor and control the PCM-3362. These features are optional: install them only if you need them.

Power Button(Pin1 & Pin2)

PCM-3362 supports power on/off button.

Reset (Pin3 & Pin4)

If you install a reset switch, it should be an open single pole switch. Momentarily pressing the switch will activate a reset.

POWER LED (Pin5 & Pin6)

POWER LED indicator would light when the power is on.

HDD LED (Pin7 & Pin8)

The HDD LED indicator for hard disk access is an active low signal.

2.11 Buzzer Connector (CN13)

PCM-3362 provides one buzzer connector to connect buzzer for alert function. Buzzer, Advantech's P/N:1750005282, can be selected to install on board.

2.12 SATA Connector (CN15)

In addition to on board 2GB flash, PCM-3362 features one high performance serial ATA interfaces (up to 300 MB/s) that eases cabling to hard drives with thin and long cables while your application need more large storage capacity.

2.13 COM port connector (CN16 & CN17)

The board provides three serial ports: two serial RS-232 ports in one 20 pin connector (CN16:COM1/2), and one serial port RS422/485 in 4 pin connector(CN17: COM3).

It provides connections for serial devices or a communication network. You can find the pin assignments for the COM port connector in Appendix.

2.13.1 Serial Port RS-422/485 (CN17)

COM3 (CN17) can be configured to operate in RS-422 or RS-485 mode by JP3.

2.14 Giga LAN Connector (CN18)

PCM-3362 uses the Intel® 82567V Gigabit LAN chips are linked to dedicated PCIe x1 lanes. PCM-3362 provide high throughputs for heavy loading networking environment. LAN connections are made via two internal 10-pin box header.

2.14.1 LAN LED Connector (CN19)

PCM-3362 provides an external LAN LED Pin header for connecting to the front side of the chassis. With this convenient design users may know whether the LAN port is acting or not easily. Refer to Appendix for detailed information on the pin assignments.

2.15 Keyboard and PS/2 mouse connector (CN20)

The board provides a keyboard connector that supports both a keyboard and a PS/2 style mouse. In most cases, especially in embedded applications, a keyboard is not used. If the keyboard is not present, the standard PC/AT BIOS will report an error or fail during power-on self-test (POST) after a reset. The PCM 3362's BIOS standard setup menu allows you to select "All, But Keyboard" under the "Halt On" selection. This allows no-keyboard operation in embedded system applications, without the system halting under POST.

2.16 GPIO Connector (CN21)

The board supports 8-bit GPIO through GPIO connector. The 8 digital inputs and outputs can be programmed to read or control devices, with each input or output defined.

2.17 ATX Power in connector (CN23)

The PCM-3362 can support an advanced soft power switch function, if an ATX power supply is used. please follow below instruction to enable ATX functions.

1. Plug ATX power cable (1700002332) into CN24.
2. Connect the 3-pin plug of this power cable to CN23 (ATX Power in connector).
3. Connect the power on/off button cable of the chassis to CN12 (front panel connector) pin1-2.

Caution! *Important Make sure that the ATX power supply can take at least a 10mA load on the 5 V standby lead (5VSB). If not, you may have difficulty powering on your system.*



2.18 Power Connectors (CN24)

Supplies main power +5 V to the PCM-3362, and to devices that require +12 V.

2.19 I2C Bus connector (CN25)

PCM-3362 provides I2C Bus connector for customer connection to I2C protocol embedded device.

Advantech also provide I2C API allowing a developer to interface with an embedded system environment and transfer serial messages using the I2C protocols, allowing multiple simultaneous device control.

2.20 -12 V & -5 V power connector (CN26)

The PCM-3362 is equipped with a Negative Power Input connector providing -12 V & -5 V power if your applications happen to need it.

2.21 Watchdog timer configuration

An onboard watchdog timer reduces the chance of disruptions which EMP (electro magnetic pulse) interference can cause. This is an invaluable protective device for standalone or unmanned applications. Setup involves one jumper and running the control software (refer to Appendix).

Chapter 3

AMI BIOS Setup

AMIBIOS has been integrated into many motherboards for over a decade. With the AMIBIOS Setup program, you can modify BIOS settings and control the various system features. This chapter describes the basic navigation of the PCM-3362 BIOS setup screens.

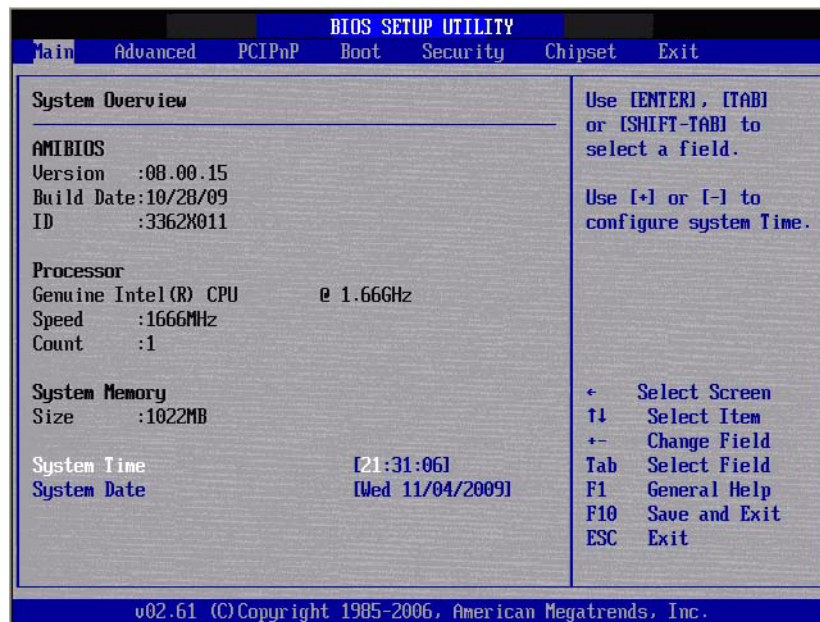


Figure 3.1 Setup program initial screen

AMI's BIOS ROM has a built-in Setup program that allows users to modify the basic system configuration. This information is stored in battery-backed CMOS so it retains the Setup information when the power is turned off.

3.1 Entering Setup

Turn on the computer and check for the “patch” code. If there is a number assigned to the patch code, it means that the BIOS supports your CPU. If there is no number assigned to the patch code, please contact an Advantech application engineer to obtain an up-to-date patch code file. This will ensure that your CPU's system status is valid. After ensuring that you have a number assigned to the patch code, press and you will immediately be allowed to enter Setup.

3.2 Main Setup

When you first enter the BIOS Setup Utility, you will encounter the Main setup screen. You can always return to the Main setup screen by selecting the Main tab. There are two Main Setup options. They are described in this section. The Main BIOS Setup screen is shown below.

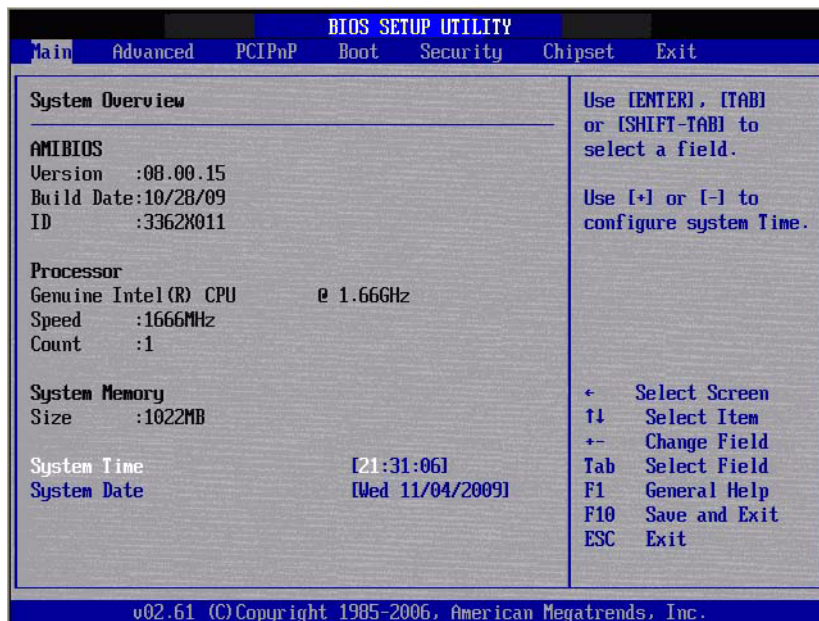


Figure 3.2 Main setup screen

The Main BIOS setup screen has two main frames. The left frame displays all the options that can be configured. Grayed-out options cannot be configured; options in blue can. The right frame displays the key legend.

Above the key legend is an area reserved for a text message. When an option is selected in the left frame, it is highlighted in white. Often a text message will accompany it.

3.2.1 System time / System date

Use this option to change the system time and date. Highlight System Time or System Date using the <Arrow> keys. Enter new values through the keyboard. Press the <Tab> key or the <Arrow> keys to move between fields. The date must be entered in MM/DD/YY format. The time must be entered in HH:MM:SS format.

3.3 Advanced BIOS Features Setup

Select the Advanced tab from the PCM-3362 setup screen to enter the Advanced BIOS Setup screen. You can select any of the items in the left frame of the screen, such as CPU Configuration, to go to the sub menu for that item. You can display an Advanced BIOS Setup option by highlighting it using the <Arrow> keys. All Advanced BIOS Setup options are described in this section. The Advanced BIOS Setup screens is shown below. The sub menus are described on the following pages.

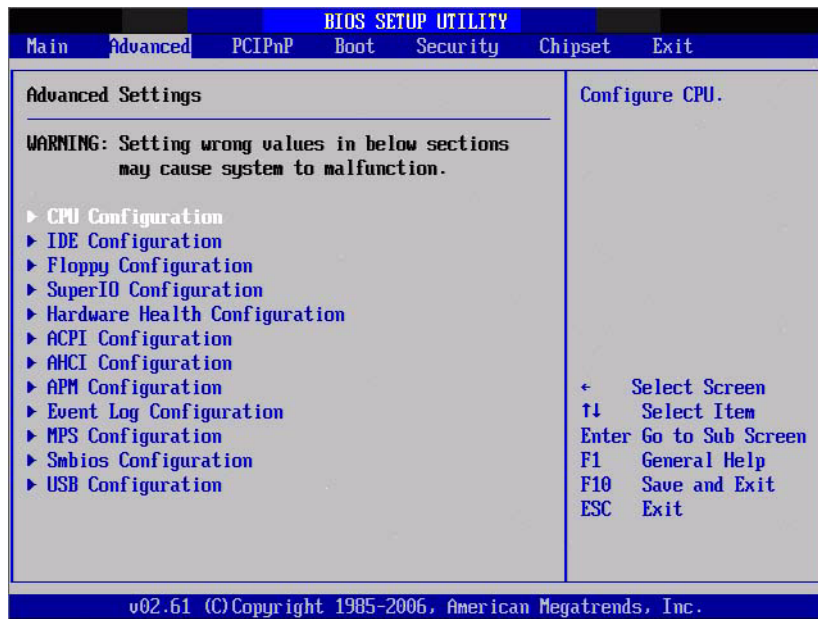


Figure 3.3 Advanced BIOS features setup screen

3.3.1 CPU Configuration

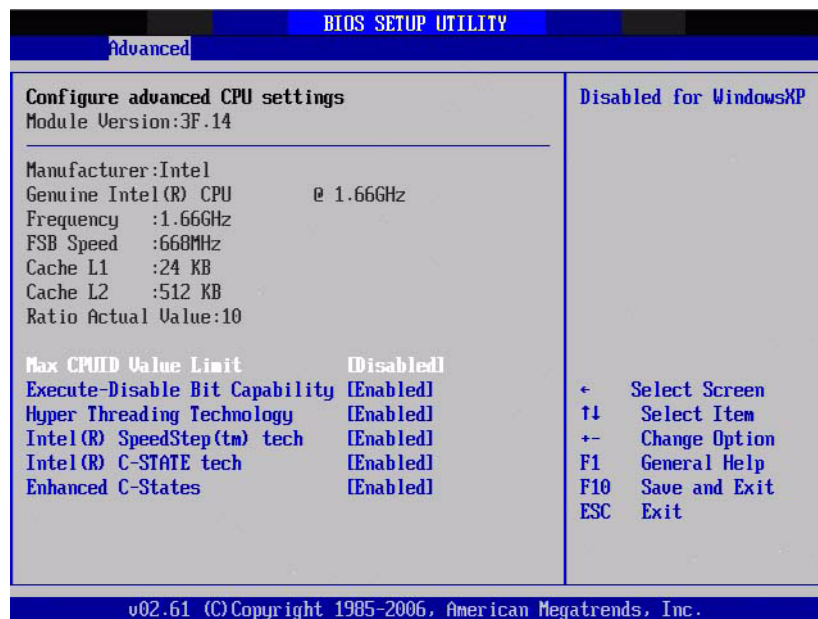


Figure 3.4 CPU Configuration Setting

Max CPUID Value Limit

This item allows you to limit CPUID maximum value.

Execute-Disable Bit Capability

This item allows you to enable or disable the No-Execution page protection technology.

Hyper Threading Technology

This item allows you to enable or disable Intel® Hyper Threading technology.

Intel® SpeedStep™ tech

When set to disabled, the CPU runs at its default speed, when set to enabled, the CPU speed is controlled by the operating system.

Intel® C-STATE tech

This item allows the CPU to save more power under idle mode.

Enhanced C-States

CPU idle set to enhanced C-States, disabled by Intel® C-STATE tech item.

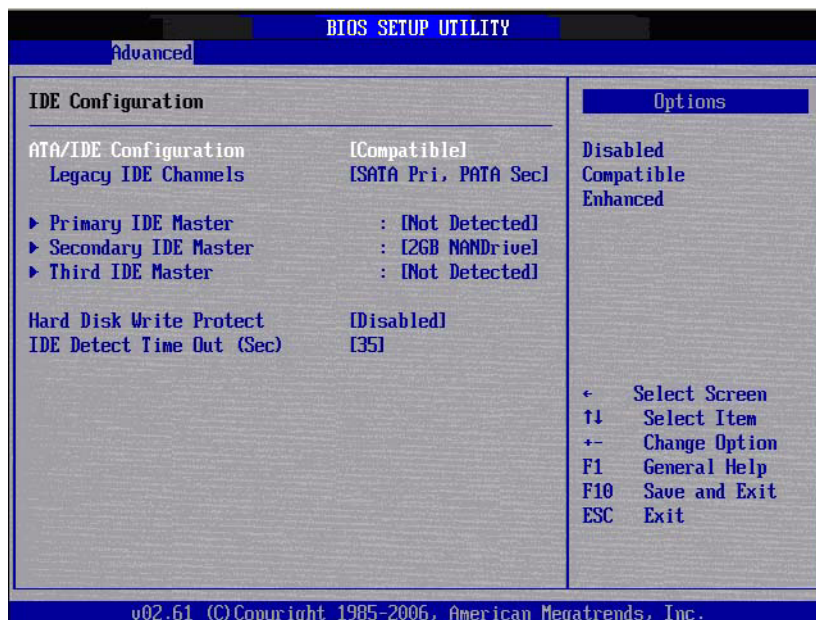
3.3.2 IDE Configuration

Figure 3.5 IDE Configuration

ATA/IDE Configuration

This item allows you to select Disabled / Compatible / Enhanced.

Legacy IDE Channels

When set to Enhanced mode you can select IDE or AHCI mode. When select Compatible mode you can select SATA only / SATA pri, PATA sec or PATA only.

Primary/Secondary/Third IDE Master

BIOS auto detects the presence of IDE device, and displays the status of auto detection of IDE device.

- **Type:** Select the type of SATA driver.[Not Installed][Auto][CD/DVD][ARMD]
- **LBA/Large Mode:** Enables or Disables the LBA mode.
- **Block (Multi-Sector Transfer):** Enables or disables data multi-sectors transfers.
- **PIO Mode:** Select the PIO mode.
- **DMA Mode:** Select the DMA mode.
- **S.M.A.R.T.:** Select the smart monitoring, analysis, and reporting technology.
- **32Bit Data Transfer:** Enables or disables 32-bit data transfer.

Hard Disk Write Protect

Disable/Enable device write protection. This will be effective only if device is accessed through BIOS.

IDE Detect Time Out (Sec)

This item allows you to select the time out value for detecting ATA/ATAPI device(s).

3.3.3 Super I/O Configuration

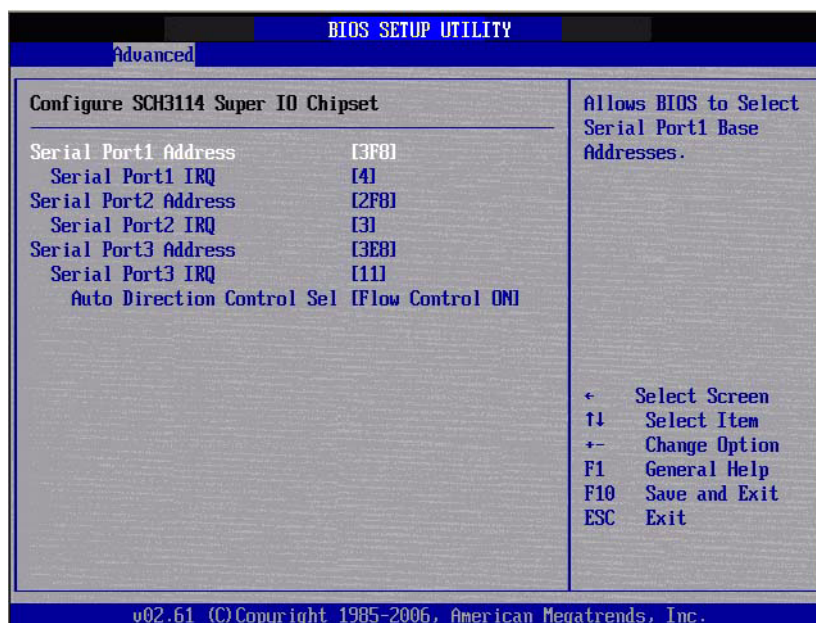


Figure 3.6 Super I/O Configuration

Serial Port1 / Port2 / Port3 address

This item allows you to select serial port1 ~ port3 of base addresses.

Serial Port1 / Port2 / Port3 IRQ

This item allows you to select serial port1 ~ port3 of IRQ.

Auto Direction Control Sel

This item allows you to enable or disable auto flow control function.

3.3.4 Hardware Health Configuration

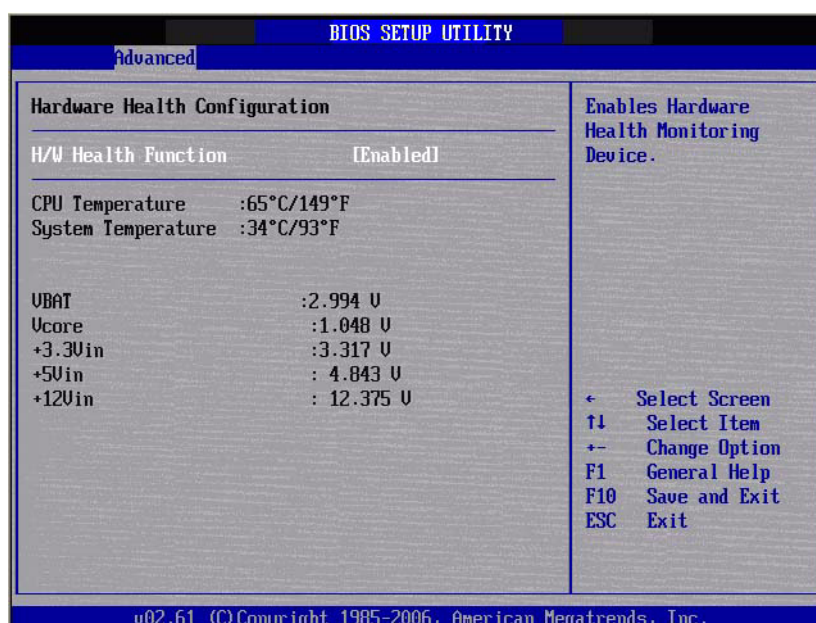


Figure 3.7 Hardware health configuration

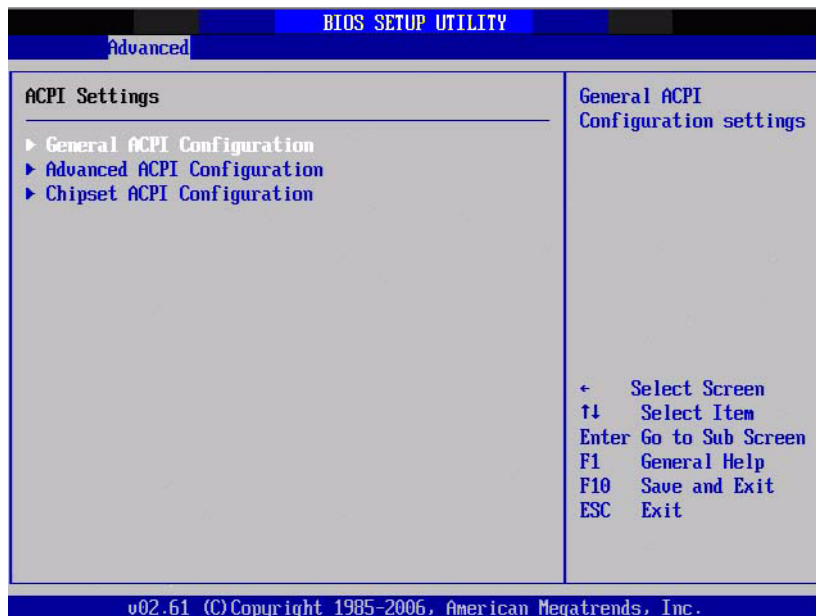
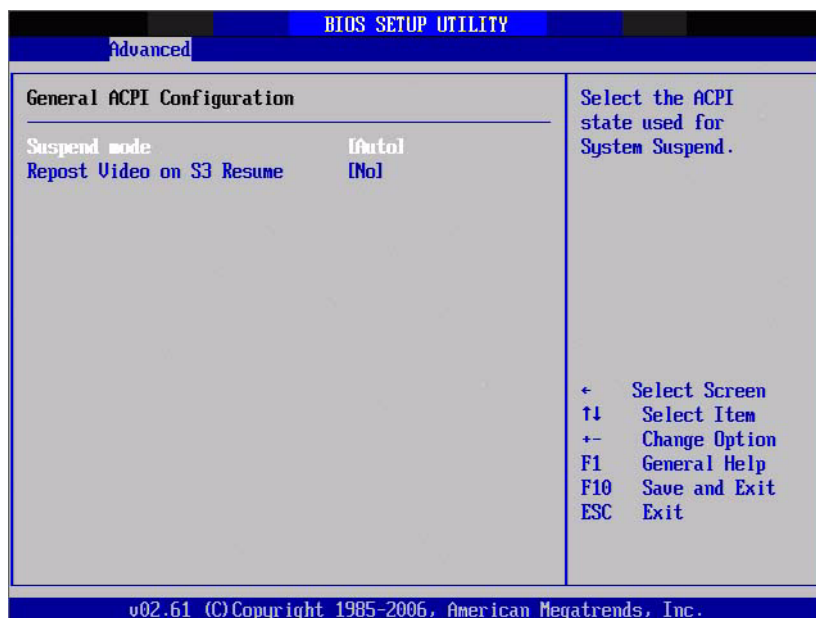
H/W Health Function

This item allows you to control H/W monitor of showing.

Temperature & Voltage show

CPU/System Temperature

Vcore / +3.3Vin / +5Vin / +12Vin / VBAT

3.3.5 ACPI Settings**Figure 3.8 ACPI Settings****3.3.5.1 General ACPI Configuration****Figure 3.9 General ACPI Configuration****Suspend mode**

Select the ACPI state used for system suspend.

Report Video on S3 Resume

This item allows you to invoke VA BIOS POST on S3/STR resume.

3.3.5.2 Advanced ACPI Configuration

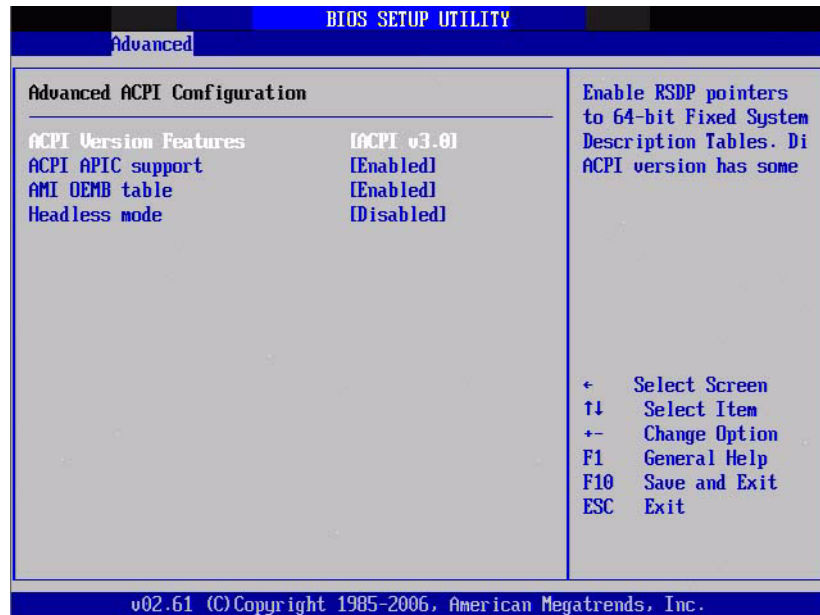


Figure 3.10 Advanced ACPI Configuration

ACPI Version Features

This item allows you to enable RSDP pointers to 64-bit fixed system description tables.

ACPI APIC support

Include APIC table pointer to RSDT pointer list.

AMI OEMB table

Include OEMB table pointer to R(x)SDT pointer lists.

Headless mode

Enable / Disable Headless operation mode through ACPI.

3.3.5.3 Chipset ACPI Configuration

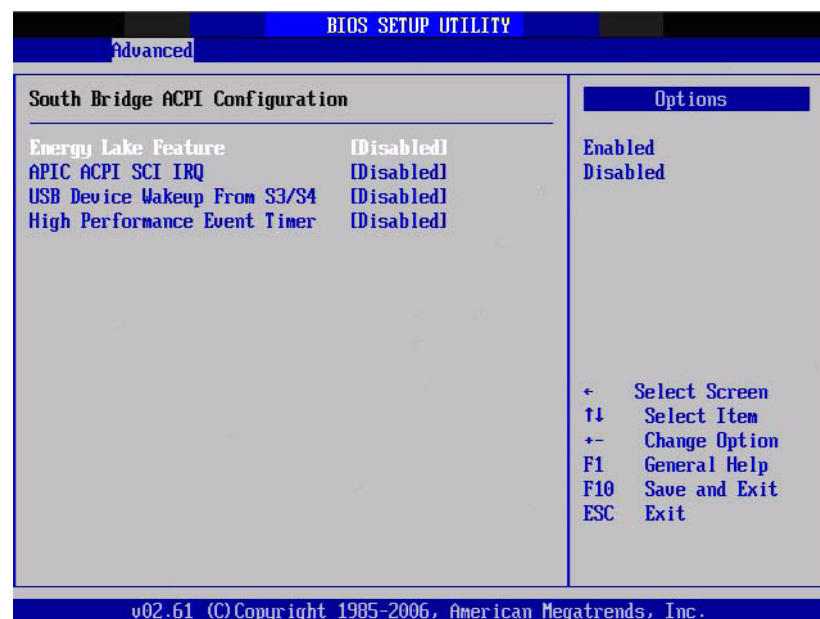


Figure 3.11 Chipset ACPI Configuration

Energy Lake Feature

Allows you to configure Intel's Energy Lake power management technology.

APIC ACPI SCI IRQ

Enable/Disable APIC ACPI SCI IRQ.

USB Device Wakeup From S3/S4

Enable/Disable USB Device Wakeup from S3/S4.

High Performance Event Timer

Enable/Disable High performance Event timer.

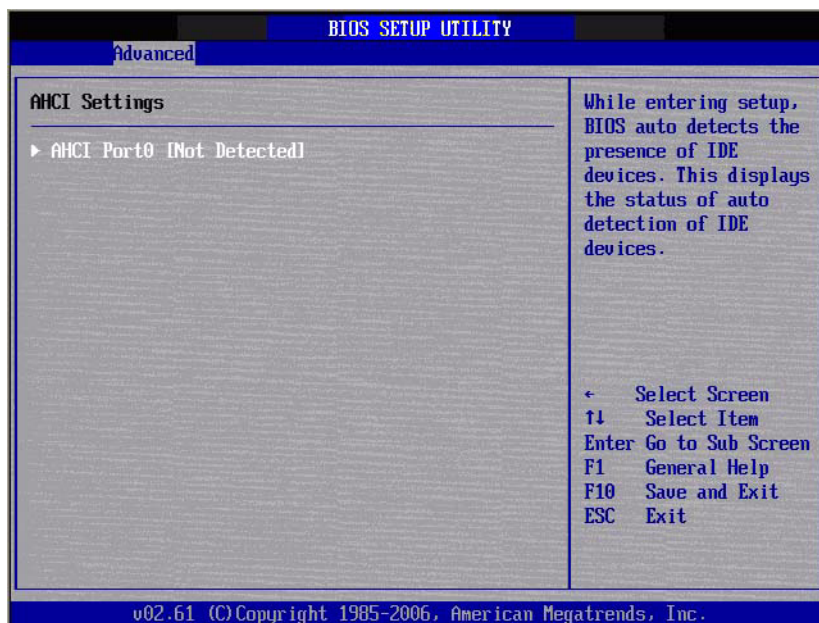
3.3.6 AHCI Configuration

Figure 3.12 Advanced ACPI Configuration

AHCI Ports0

While entering setup, BIOS auto detects the presence of IDE devices. This displays the status of auto detection of IDE device.

3.3.7 APM Configuration

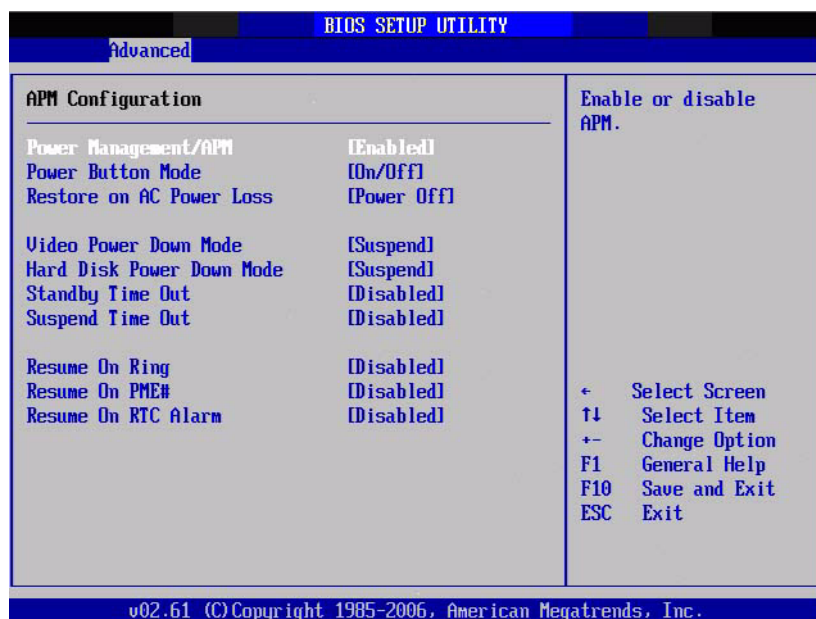


Figure 3.13 APM Configuration

Power Management/APM

Enable or disable APM.

Power Button Mode

Power on, off, or enter suspend mode when the power button is pressed. The following options are also available.

Restore on AC power Loss

Use this to set up the system response after a power failure. The "Off" setting keeps the system powered off after power failure, the "On" setting boots up the system after failure, and the "Last State" returns the system to the status just before power failure.

Video Power Down Mode

Power down video in suspend or standby mode.

Hard Disk Power Down Mode

Power down Hard Disk in suspend or standby mode.

Standby Time Out

Go into standby in the specified time.

Suspend Time Out

Go into Suspend in the specified time.

Resume On Ring

Enable / Disable RI to generate a wake event.

Resume On PME#

Enable / Disable PME to generate a wake event.

Resume On RTC Alarm

Enable / Disable RTC to generate a wake event.

3.3.8 Event Log Configuration

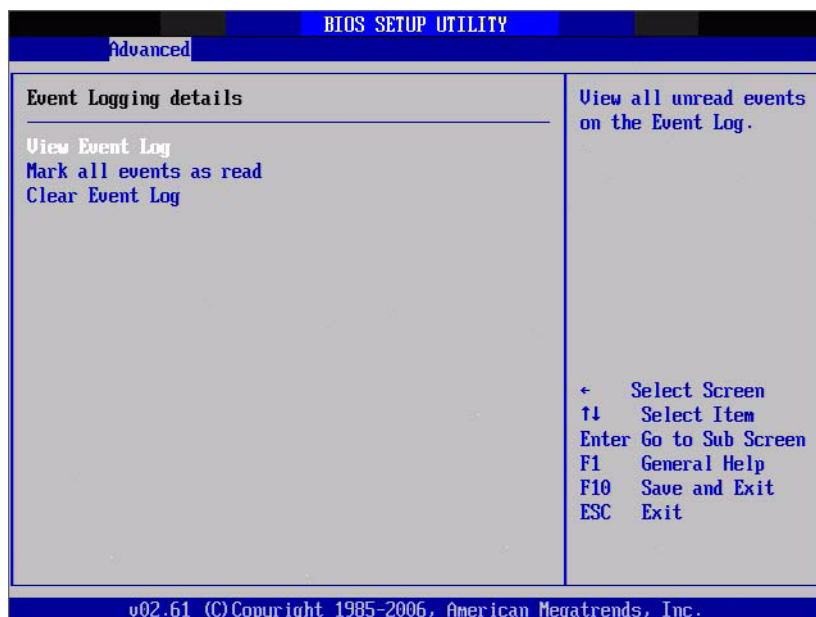


Figure 3.14 South Bridge ACPI Configuration

View Event Log

View all unread events on the event Log.

Mark all events as read

Mark all unread events as read.

Clear Event Log

Discard all events in the event Log.

3.3.9 MPS Configuration

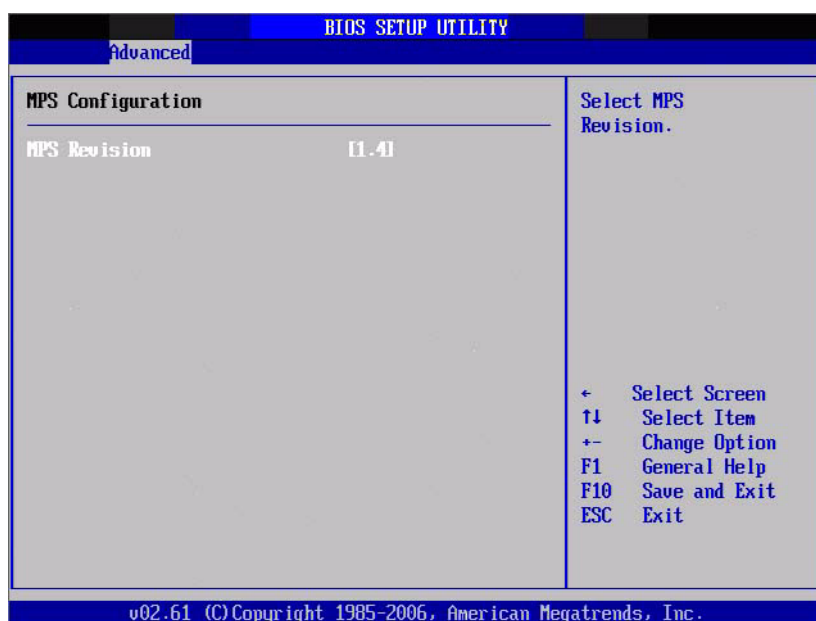


Figure 3.15 South Bridge ACPI Configuration

MPS Revision

This item allows you to select MPS reversion.

3.3.10 Smbios Configuration

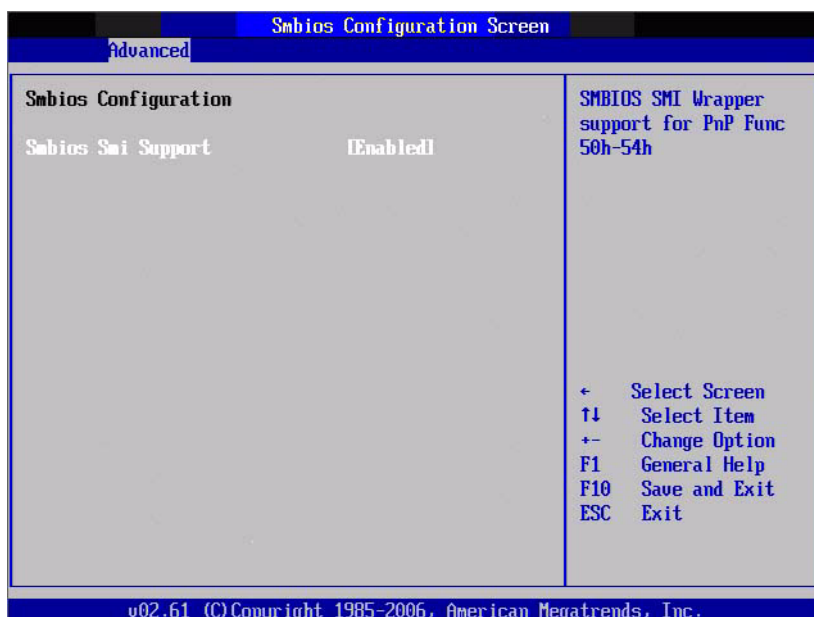


Figure 3.16 South Bridge ACPI Configuration

Smbios Smi Support

SMBIOS SMI wrapper support for PnP function 50h-54h.

3.3.11 USB Configuration

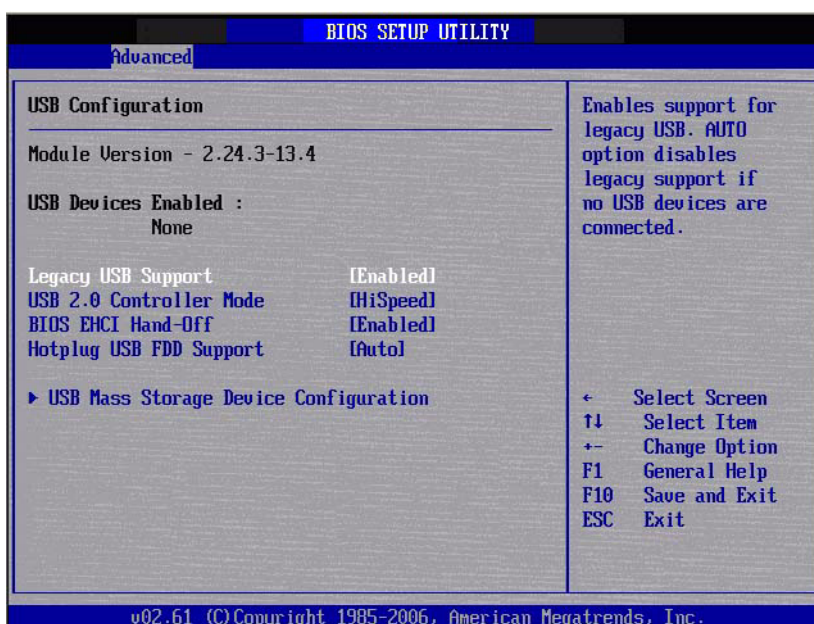


Figure 3.17 South Bridge ACPI Configuration

Legacy USB Support

Enables support for legacy USB. Auto option disables legacy support if no USB devices are connected.

USB 2.0 Controller Mode

This item allows you to select HiSpeed(480Mbps) or FullSpeed (12Mbps).

BIOS EHCI Hand-Off

This is a workaround for OSES without EHCI hand-off support. The EHCI ownership change should claim by EHCI driver.

Hotplug USB FDD Support

A dummy FDD device is created that will be associated with the hotplugged FDD later. Auto option creates this dummy device only if there is no USB FDD present.

3.3.11.1 USB Mass Storage Device Configuration

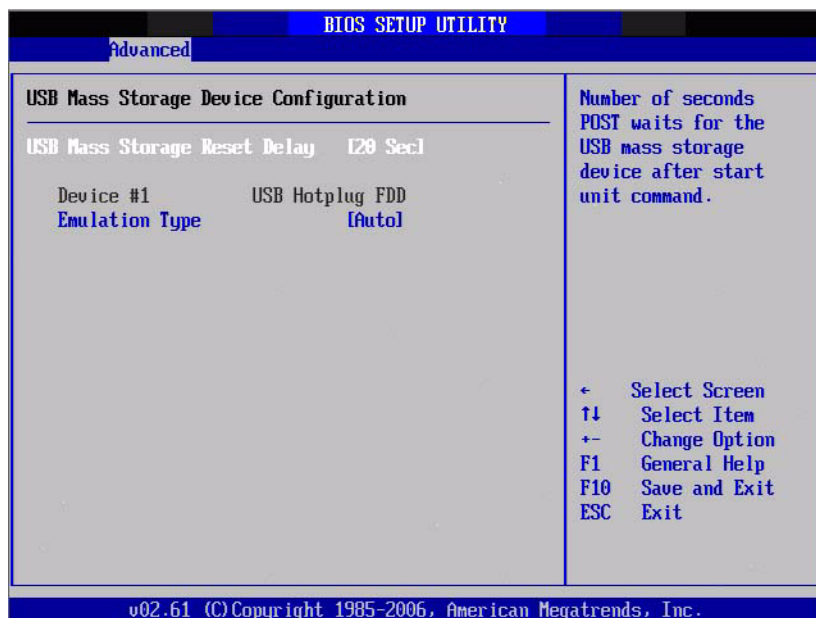


Figure 3.18 USB Mass storage Device Configuration

USB Mass Storage Reset Delay

Number of sends POST wait for the USB mass storage device after start unit command.

Emulation Type

If Auto, USB devices less than 530MB will be emulated as Floppy and remaining as hard drive. Force FDD option can be used to force a FDD formatted drive to boot as FDD (Ex. ZIP drive).

3.4 Advanced PCI/PnP Settings

Select the PCI/PnP tab from the PCM-3362 setup screen to enter the Plug and Play BIOS Setup screen. You can display a Plug and Play BIOS Setup option by highlighting it using the <Arrow> keys. All Plug and Play BIOS Setup options are described in this section. The Plug and Play BIOS Setup screen is shown below.

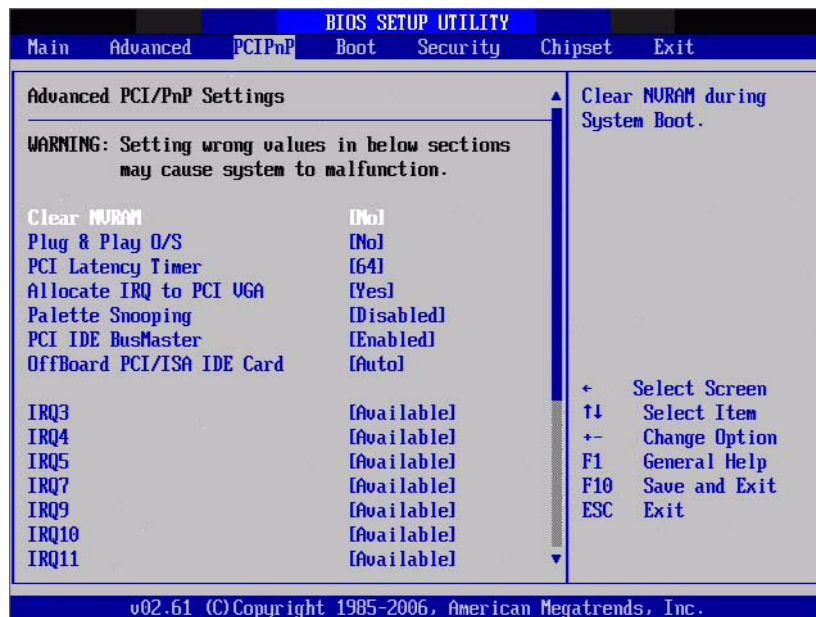


Figure 3.19 PCI/PNP Setup (top)

Clear NVRAM

Set this value to force the BIOS to clear the Non-Volatile Random Access Memory (NVRAM). The Optimal and Fail-Safe default setting is No.

Plug & Play O/S

When set to No, BIOS configures all the device in the system. When set to Yes and if you install a Plug and Play operating system, the operating system configures the Plug and Play device not required for boot.

PCI Latency Timer

Value in units of PCI clocks for PCI device latency timer register.

Allocate IRQ to PCI VGA

When set to Yes will assigns IRQ to PCI VGA card if card requests IRQ. When set to No will not assign IRQ to PCI VGA card even if card requests an IRQ.

Palette Snooping

This item is designed to solve problems caused by some non-standard VGA card.

PCI IDE BusMaster

When set to enabled BIOS uses PCI busmastering for reading/writing to IDE drives.

OffBoard PCI/ISA IDE Card

Some PCI IDE cards may require this to be set to the PCI slot number that is holding the card. When set to Auto will works for most PCI IDE cards.

IRQ3 / 4 / 5 / 7 / 9 / 10 / 11

This item allows you respectively assign an interruptive type for IRQ-3, 4, 5, 7, 9, 10, 11.

DMA Channel0 / 1 / 3 / 5 / 6 / 7

When set to Available will specified DMA is available to be used by PCI/PnP devices. When set to Reserved will specified DMA will Reserved for use by legacy ISA devices.

Reserved Memory Size

This item allows you to reserved size of memory block for legacy ISA device.

3.5 Boot Settings

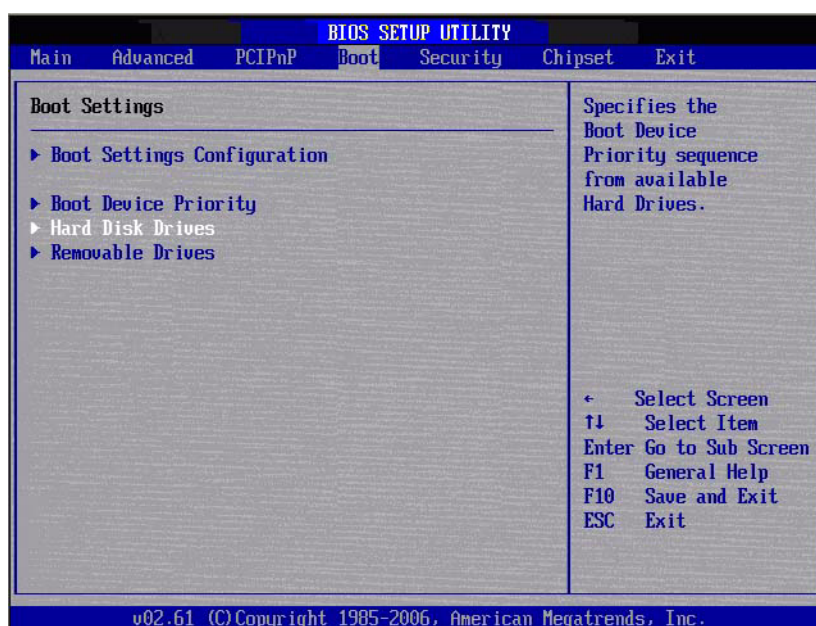


Figure 3.20 Boot Setup Utility

3.5.1 Boot settings Configuration

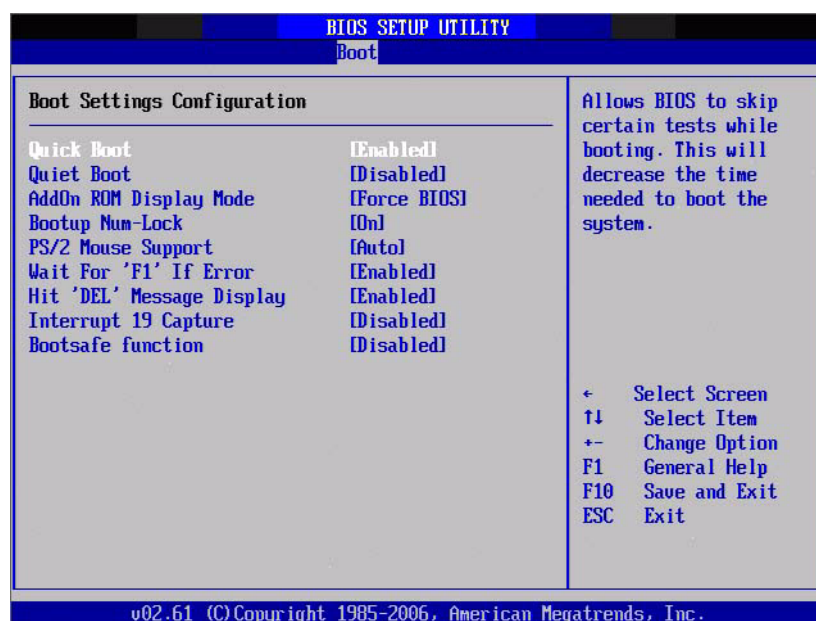


Figure 3.21 Boot Setting Configuration

Quick Boot

This item allows BIOS to skip certain tests while booting. This will decrease the time needed to boot the system.

Quiet Boot

If this option is set to Disabled, the BIOS displays normal POST messages. If Enabled, an OEM Logo is shown instead of POST messages.

AddOn ROM Display Mode

Set display mode for option ROM.

Bootup Num-Lock

Select the Power-on state for Numlock.

PS/2 Mouse Support

Select support for PS/2 Mouse.

Wait For 'F1' If Error

Wait for the F1 key to be pressed if an error occurs.

Hit 'DEL' Message Display

Displays "Press DEL to run Setup" in POST.

Interrupt 19 Capture

This item allows option ROMs to trap interrupt 19.

Bootsafe function

This item allows you to enable or disable the bootsafe function.

3.6 Security Setup

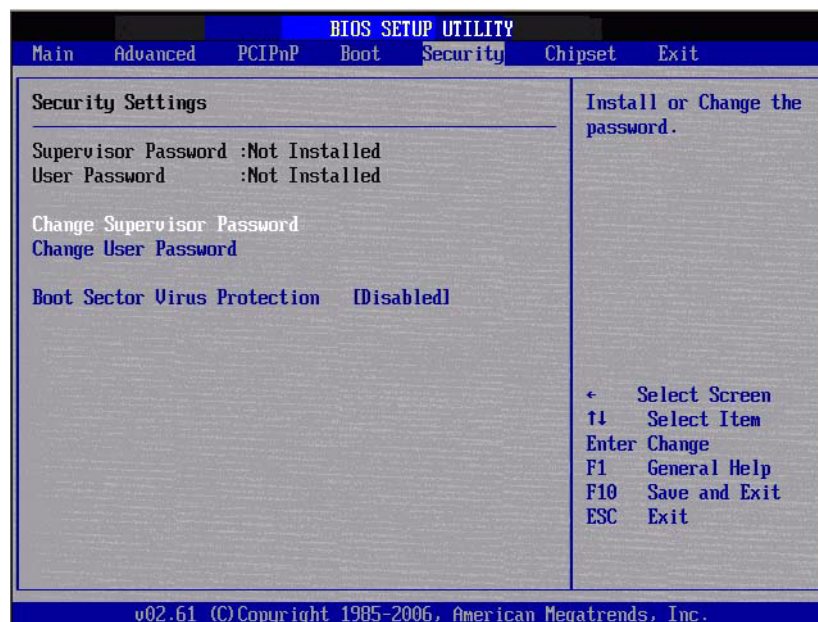


Figure 3.22 Password Configuration

Select Security Setup from the PCM-3362 Setup main BIOS setup menu. All Security Setup options, such as password protection and virus protection are described in this section. To access the sub menu for the following items, select the item and press <Enter>:

Change Supervisor / User Password

Boot sector Virus protection: The boot sector virus protection will warn if any program tries to write to the boot sector.

3.7 Advanced Chipset Settings



Figure 3.23 Advanced Chipset Settings

3.7.1 North Bridge Chipset Configuration

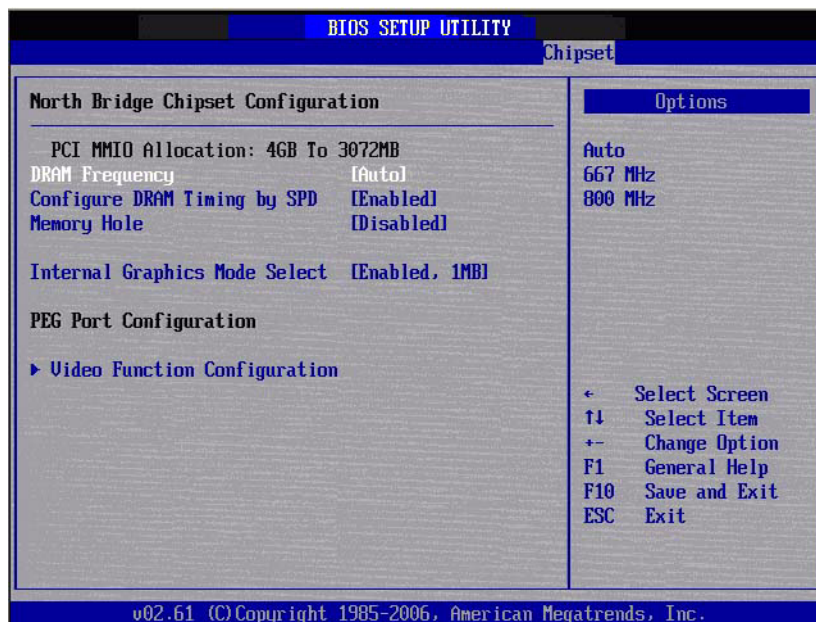


Figure 3.24 North Bridge Configuration

DRAM Frequency

This item allows you to manually changed DRAM frequency.

Configure DRAM Timing by SPD

This item allows you to enables or disables detect by DRAM SPD.

Memory Hole

This item allows you to free 15MB-16MB of memory size for some ISA devices.

Internal Graphics Mode Select: Select the amount of system memory used by the Internal graphics device.

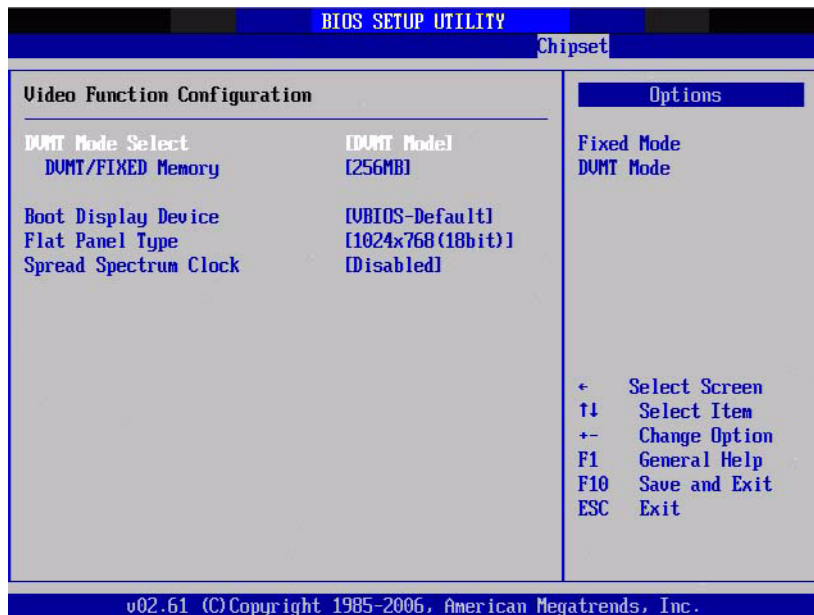


Figure 3.25 Video function configuration

DVMT Mode Select

Displays the active system memory mode.

DVMT/FIXED Memory

Specify the amount of DVMT / FIXED system memory to allocate for video memory.

Boot Display Device

Select boot display device at post stage.

Flat Panel Type

This item allows you to select which panel resolution you wants.

Spread Spectrum Clock

This item allows you to enables or disables spread spectrum clock.

3.7.2 South Bridge Chipset Configuration

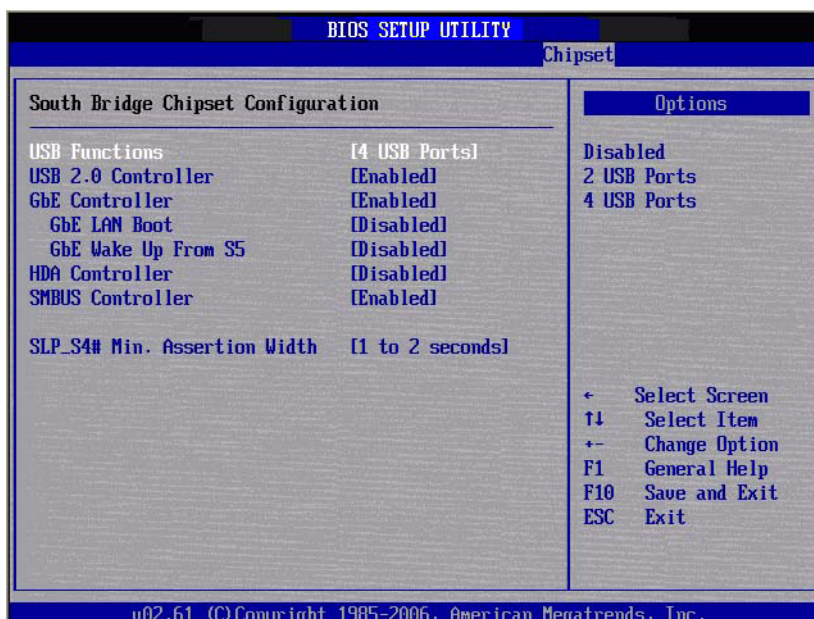


Figure 3.26 South Bridge Configuration

USB Functions

Disabled, 2 USB Ports, or 4 USB Ports.

USB 2.0 Controller

Enables or disables the USB 2.0 controller.

GbE controller

Enables or disables the GbE controller.

GbE LAN Boot

Enables or disables GbE LAN boot.

GbE Wake Up From S5

Enables or disables GbE LAN wake up from S5 function.

HDA Controller

Enables or disables the HDA controller.

SMBUS Controller

Enables or disables the SMBUS controller.

SLP_S4# Min. Assertion Width

This item allows you to set a delay of sorts.

3.8 Exit Option

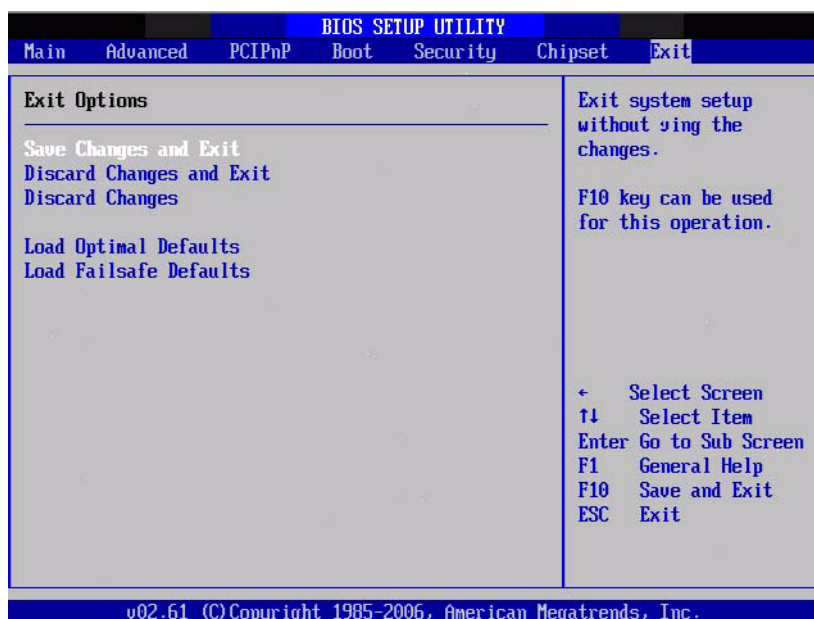


Figure 3.27 Exit Option

3.8.1 Save Changes and Exit

When you have completed system configuration, select this option to save your changes, exit BIOS setup and reboot the computer so the new system configuration parameters can take effect.

1. Select Exit Saving Changes from the Exit menu and press <Enter>.

The following message appears: Save Configuration Changes and Exit Now? [Ok] [Cancel]

2. Select Ok or cancel.

3.8.2 Discard Changes and Exit

Select this option to quit Setup without making any permanent changes to the system configuration.

1. Select Exit Discarding Changes from the Exit menu and press <Enter>. The following message appears: Discard Changes and Exit Setup Now? [Ok] [Cancel]
2. Select Ok to discard changes and exit. Discard Changes
3. Select Discard Changes from the Exit menu and press <Enter>.

3.8.3 Load Optimal Defaults

The PCM-3362 automatically configures all setup items to optimal settings when you select this option. Optimal Defaults are designed for maximum system performance, but may not work best for all computer applications. In particular, do not use the Optimal Defaults if your computer is experiencing system configuration problems. Select Load Optimal Defaults from the Exit menu and press <Enter>.

3.8.4 Load Fail-Safe Defaults

The PCM-3362 automatically configures all setup options to fail-safe settings when you select this option. Fail-Safe Defaults are designed for maximum system stability, but not maximum performance. Select Fail-Safe Defaults if your computer is experiencing system configuration problems.

1. Select Load Fail-Safe Defaults from the Exit menu and press <Enter>. The following message appears: Load Fail-Safe Defaults? [OK] [Cancel]
2. Select OK to load Fail-Safe defaults.

Chapter 4

Software Introduction & Installation

4.1 S/W Introduction

The mission of Advantech Embedded Software Services is to "Enhance quality of life with Advantech platforms and Microsoft Windows® embedded technology." We enable Windows® Embedded software products on Advantech platforms to more effectively support the embedded computing community. Customers are freed from the hassle of dealing with multiple vendors (Hardware suppliers, System integrators, Embedded OS distributor) for projects. Our goal is to make Windows® Embedded Software solutions easily and widely available to the embedded computing community.

4.2 Driver Installation

4.2.1 Windows XP professional

To install the drivers for Windows XP Professional, insert the CD into the CD-Rom, it will auto-detect the hardware platform and then pop up with the "Embedded Computing Install Wizard" box; just select the drivers that you want to install then click "Install All Selected Drivers". Follow the Driver Setup Wizard instructions; click "Next" to complete the installation.

4.2.2 Other OS

To install the drivers for Other Windows OS or Linux, please browse the CD to run the setup file under each chipset folder on the CD-ROM.

4.3 Value-Added Software Services

4.3.1 SUSI Introduction

To make hardware easier and convenient to access for programmers, Advantech has released a suite of API (Application Programming Interface) in the form of a program library. The program Library is called Secured and Unified Smart Interface or SUSI for short.

In modern operating systems, user space applications cannot access hardware directly. Drivers are required to access hardware. User space applications access hardware through drivers. Different operating systems usually define different interface for drivers. This means that user space applications call different functions for hardware access in different operating systems. To provide a uniform interface for accessing hardware, an abstraction layer is built on top of the drivers and SUSI is such an abstraction layer. SUSI provides a uniform API for application programmers to access the hardware functions in different Operating Systems and on different Advantech hardware platforms.

Application programmers can invoke the functions exported by SUSI instead of calling the drivers directly. The benefit of using SUSI is portability. The same set of API is defined for different Advantech hardware platforms. Also, the same set of API is implemented in different Operating Systems including Windows XP and Windows CE. This user's manual describes some sample programs and the API in SUSI. The hardware functions currently supported by SUSI can be grouped into a few categories including Watchdog, I²C, SMBus, GPIO, and VGA control. Each category of API in SUSI is briefly described below.

4.3.2 Software APIs

PCM-3362 supports software APIs including GPIO, I²C, backlight on/off, Brightness control, watchdog, Hardware Monitor, and Power Saving.

4.3.2.1 The GPIO API

General Purpose Input/Output is a flexible parallel interface that allows a variety of custom connections. It allows users to monitor the level of signal input or set the output status to switch on/off a device. Our API also provides Programmable GPIO, which allows developers to dynamically set the GPIO input or output status.

4.3.2.2 The I²C API

I²C is a bi-directional two-wire bus that was developed by Philips for use in their televisions in the 1980s and nowadays is used in various types of embedded systems. The strict timing requirements defined in the I²C protocol has been taken care of by SUSI. Instead of asking application programmers to figure out the strict timing requirements in the I²C protocol, the I²C API in SUSI can be used to control I²C devices by invoking other function calls. SUSI provides a consistent programming interface for different Advantech boards. That means user programs using SUSI are portable among different Advantech boards as long as the boards and SUSI provide the required functionalities. Overall product development times can be greatly reduced using SUSI.

4.3.2.3 The Display Control API

There are two kinds of VGA control APIs, backlight on/off control and brightness control. Backlight on/off control allows a developer to turn on or off the backlight, and to control brightness smoothly.

1. Brightness Control
 - The Brightness Control API allows a developer to interface with an embedded device to easily control brightness.
2. Backlight Control
 - The Backlight API allows a developer to control the backlight (screen) on/off in an embedded device.

4.3.2.4 The Watchdog API

A watchdog timer (abbreviated as WDT) is a hardware device which triggers an action, e.g. rebooting the system, if the system does not reset the timer within a specific period of time. The WDT API in SUSI provides developers with functions such as starting the timer, resetting the timer, and setting the timeout value if the hardware requires customized timeout values.

4.3.2.5 The Hardware Monitor API

The hardware monitor (abbreviated as HWM) is a system health supervision capability achieved by placing certain I/O chips along with sensors for inspecting the target of interests for certain condition indexes, such as fan speed, temperature and voltage etc.

However, due to the inaccuracy among many commercially available hardware monitoring chips, Advantech has developed a unique scheme for hardware monitoring - achieved by using a dedicated micro-processor with algorithms specifically designed for providing accurate, real-time and reliable data content; helping protect your system in a more reliable manner.

4.3.2.6 The Power Saving API

1. CPU Speed

- Make use of Intel SpeedStep technology to reduce power consumption. The system will automatically adjust the CPU Speed depending on system loading.
2. System Throttling
- Refers to a series of methods for reducing power consumption in computers by lowering the clock frequency. APIs allow the user to lower the clock from 87.5% to 12.5%.

4.3.3 SUSI Utilities

PCM-3362 supports software Utility including Embedded Security ID, Monitoring utility, eSOS.

4.3.3.1 Embedded Security ID

The embedded application is the most important property of a system integrator. It contains valuable intellectual property, design knowledge and innovation, but it is easily copied! The Embedded Security ID utility provides reliable security functions for customers to secure their application data within embedded BIOS.

4.3.3.2 Monitoring utility

The Monitoring utility allows the customer to monitor system health, including voltage, CPU and system temperature and fan speed. These items are important to a device; if critical errors happen and are not solved immediately, permanent damage may be caused.

4.3.3.3 eSOS

The eSOS is a small OS stored in BIOS ROM. It will boot up in case of a main OS crash. It will diagnose the hardware status, and then send an e-mail to a designated administrator. The eSOS also provides remote connection: Telnet server and FTP server, allowing the administrator to rescue the system.

Note! eSOS Utility support on PCM-3362 is required to have BIOS modification.



4.3.4 SUSI Installation

SUSI supports many different operating systems. Each subsection below describes how to install SUSI and related software on a specific operating system. Please refer to the subsection matching your operating system.

4.3.4.1 Windows XP

In windows XP, you can install the library, drivers and demo programs onto the platform easily using the installation tool--The SUSI Library Installer. After the installer has executed, the SUSI Library and related files for Windows XP can be found in the target installation directory. The files are listed in the following table.

Directory	Contents
Library	<ul style="list-style-type: none"> ■ Susi.lib Library for developing the applications on Windows XP. ■ Susi.dll Dynamic library for SUSI on Windows XP.

\Demo	<ul style="list-style-type: none"> ■ SusiDemo.EXE Demo program on Windows XP. ■ Susi.dll Dynamic library for SUSI on Windows XP.
\Demo\SRC	Source code of the demo program on Windows XP.

The following section illustrates the installation process.

Note! *The version of the SUSI Library Installer shown on each screen shot below depends on your own particular version.*



1. Extract Susi.zip.
2. Double-click the "Setup.exe" file.

The installer searches for a previous installation of the SUSI Library. If it locates one, a screen shot opens asking whether you want to modify, repair or remove the software. If a previous version is located, please see the section of [Maintenance Setup]. If it is not located, the following screen shot opens. Click Next.

4.3.4.2 Windows CE

In windows CE, there are three ways to install the SUSI Library, you can install it manually or use Advantech CE-Builder to install the library or just copy the programs and the library onto a compact flash card.

Express Installation:

You can use Advantech CE-Builder to load the library into the image.

- First, you click the My Component tab.
- In this tab, you click Add New Category button to add a new category, e.g. the SUSI Library.
- Then you can add a new file in this category, and upload the SUSI.dll for this category.
- After these steps, you can select the SUSI Library category you created for every project.

Manual Installation:

You can add the SUSI Library into the image by editing any bib file.

First you open project.bib in the platform builder.

- Add this line to the MODULES section of project.bib
Susi.dll \$(_FLATRELEASEDIR)\Susi.dll NK SH
- If you want to run the window-based demo, add following line:
SusiTest.exe \$(_FLATRELEASEDIR)\SusiTest.exe
- If you want to run the console-based demo, add following lines:
Watchdog.exe \$(_FLATRELEASEDIR)\Watchdog.exe NK S
GPIO.exe \$(_FLATRELEASEDIR)\GPIO.exe NK S
SMBUS.exe \$(_FLATRELEASEDIR)\SMBUS.exe NK S
- Place the three files into any files directory.
- Build your new Windows CE operating system.

4.3.5 SUSI Sample Programs

Sample Programs

The sample programs demonstrate how to incorporate SUSI into your program. There are sample programs for two categories of operating system, i.e. Windows XP and Windows CE. The sample programs run in graphics mode in Windows XP and Windows CE. The sample programs are described in the subsections below.

Windows Graphics Mode

There are sample programs of Windows in graphics mode for two categories of operating system, i.e. Windows CE and Windows XP. Each demo application contains an executable file SusiDemo.exe, a shared library Susi.dll and source code within the release package. The files of Windows CE and Windows XP are not compatible with each other.

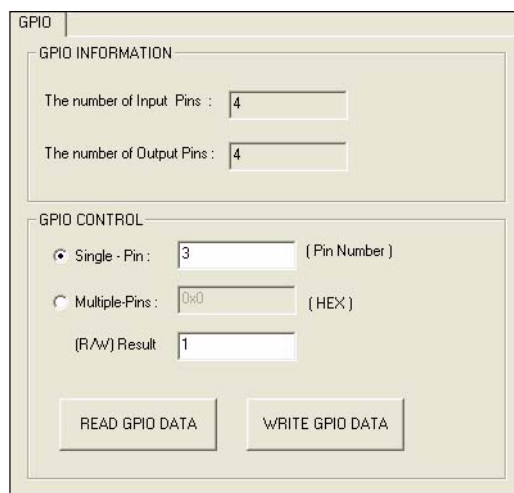
SusiDemo.exe is an executable file and it requires the shared library, Susi.dll, to demonstrate the SUSI functions. The source code of SusiDemo.exe also has two versions, i.e. Windows CE and Windows XP, and must be compiled under Microsoft Visual C++ 6.0 on Windows XP or under Microsoft Embedded Visual C++ 4.0 on Windows CE. Developers must add the header file Susi.h and library Susi.lib to their own projects when they want to develop something with SUSI.

SusiDemo.exe

The SusiDemo.exe test application is an application which uses all functions of the SUSI Library. It has five major function blocks: Watchdog, GPIO, SMBus, I²C and VGA control. The following screen shot appears when you execute SusiDemo.exe. You can click function tabs to select test functions respectively. Some function tabs will not show on the test application if your platform does not support such functions. For a complete support list, please refer to Appendix A. We describe the steps to test all functions of this application.



GPIO



When the application is executed, it will display GPIO information in the GPIO INFORMATION group box. It displays the number of input pins and output pins. You can click the radio button to choose to test either the single pin function or multiple pin functions. The GPIO pin assignments of the supported platforms are located in Appendix B.

- Test Read Single Input Pin
 - Click the radio button- Single-Pin.
 - Key in the pin number to read the value of the input pin. The Pin number starts from '0'.
 - Click the READ GPIO DATA button and the status of the GPIO pin will be displayed in (R/W) Result field.

- Test Read Multiple Input Pin
 - Click the radio button- Multiple-Pins.
 - Key in the pin number from '0x01' to '0x0F' to read the value of the input pin. The pin numbers are ordered bitwise, i.e. bit 0 stands for GPIO 0, bit 1 stands for GPIO 1, etc. For example, if you want to read pin 0, 1, and 3, the pin numbers should be '0x0B'.
 - Click READ GPIO DATA button and the statuses of the GPIO pins will be displayed in (R/W) Result field.

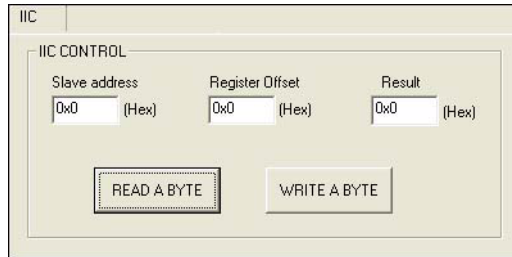
- Test Write Single Output Pin
 - Click the radio button- Single-Pin.
 - Key in the pin numbers you want to write. Pin numbers start from '0'.
 - Key in the value either '0' or '1' in (R/W) Result field to write the output pin you chose above step.
 - Click the WRITE GPIO DATA button to write the GPIO output pin.

- Test Write Multiple Output Pins
 - Click the radio button- Multiple-Pins.
 - Key in the pin number from '0x01' to '0x0F' to choose the multiple pin numbers to write the value of the output pin. The pin numbers are ordered bitwise, i.e. bit 0 stands for GPIO 0, bit 1 stands for GPIO 1, etc. For example, if you want to write pin 0, 1, and 3, the pin numbers should be '0x0B'.
 - Key in the value in (R/W) Result field from '0x01' to '0x0F' to write the value of the output pin. The pin numbers are ordered bitwise, i.e. bit 0 stands for GPIO 0, bit 1 stands for GPIO 1, etc. For example, if you want to set pin 0

and 1 high, 3 to low, the pin number should be '0x0B', and then you should key in the value '0x0A' to write.

- Click the WRITE GPIO DATA button to write the GPIO output pins.

I²C



When the application is executed, you can read or write a byte of data through I2C devices. All data must be read or written in hexadecimal system.

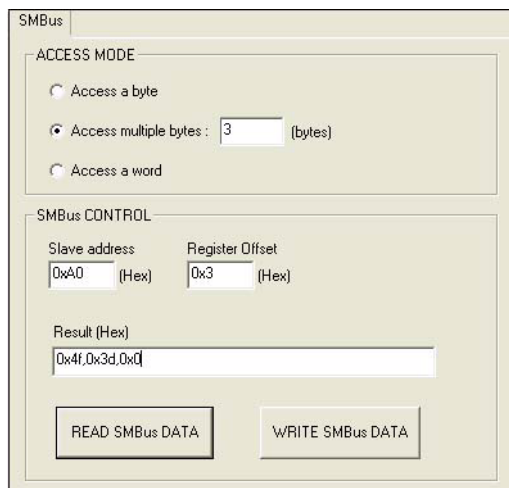
■ Read a byte

- Key in the slave device address in Slave address field.
- Key in the register offset in Register Offset field.
- Click the READ A BYTE button and then a byte of data from the device will be shown on the Result field.

■ Write a byte

- Key in the slave device address in Slave address field.
- Key in the register offset in Register Offset field.
- Key in the desirous of data in Result field to write to the device.
- Click the WRITE A BYTE button and then the data will be written to the device through I²C.

SMBus



When the application has executed, you can click the radio button to choose to test each access mode, i.e. Access a byte, Access multiple bytes and Access a word. All data must be read or written in hexadecimal except the numbers for radio button: Access multiple bytes mode must be written in decimal. You can test the functionalities of the watchdog as follows:

■ Read a byte

- Click the radio button- Access a byte.
- Key in the slave device address in the Slave address field.
- Key in the register offset in the Register Offset field.
- Click the READ SMBus DATA button and a byte of data from the device will be shown on the Result field.

- Write a byte
 - Click the radio button- Access a byte.
 - Key in the slave device address in Slave address field.
 - Key in the register offset in Register Offset field.
 - Key the desired data in the Result field to write to the device.
 - Click the WRITE SMBus DATA button and then the data will be written to the device through SMBus.

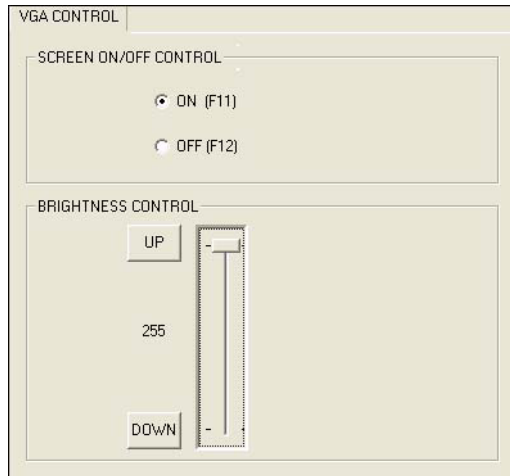
- Read a word
 - Click the radio button- Access a word.
 - Key in the slave device address in the Slave address field.
 - Key in the register offset in the Register Offset field.
 - Click the READ SMBus DATA button and then a word of data from the device will be shown on the Result field.

- Write a word
 - Click the radio button- Access a word.
 - Key in the slave device address in the Slave address field.
 - Key in the register offset in the Register Offset field.
 - Key in the desired data, such as 0x1234, in the Result field to write to the device.
 - Click the WRITE SMBus DATA button and the data will be written to the device through the SMBus.

- Read Multiple bytes
 - Click the radio button- Access multiple bytes.
 - Key in the slave device address in the Slave address field.
 - Key in the register offset in the Register Offset field.
 - Key in the desired number of bytes, such as 3, in the right side field of radio button- Access multiple bytes. The number must be written in decimal.
 - Click the READ SMBus DATA button and then all data from the device will be divided from each other by commas and be shown in the Result field.

- Write Multiple bytes
 - Click the radio button- Access multiple bytes.
 - Key in the slave device address in the Slave address field.
 - Key in the register offset in the Register Offset field.
 - Key in the desired number of bytes, such as 3, in the right side field of the radio button- Access multiple bytes. The number must be written in decimal.
 - Key in all the desired data in the Result field in hexadecimal format, divided by commas, for example, 0x50,0x60,0x7A.
 - Click the WRITE SMBus DATA button and all of the data will be written to the device through the SMBus.

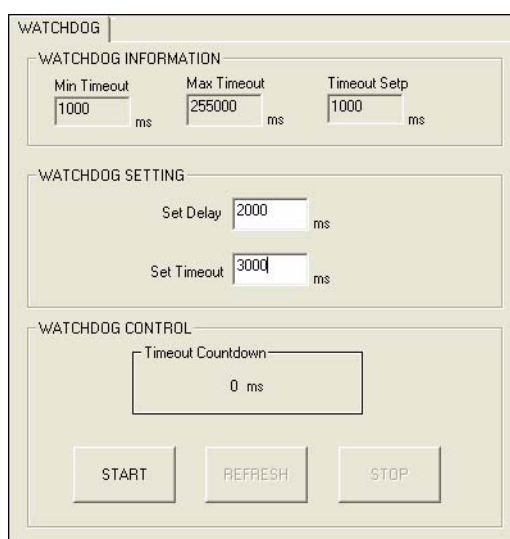
Display Control



When the application is executed, it will display two blocks of VGA control functions. The application can turn on or turn off the screen shot freely, and it also can tune the brightness of the panels if your platform is being supported. You can test the functionalities of VGA control as follows:

- Screen on/off control
 - Click the radio button ON or push the key F11 to turn on the panel screen.
 - Click the radio button OFF or push the key F12 to turn off the panel screen.
 - The display chip of your platform must be in the support list in Appendix A, or this function cannot work.
- Brightness control
 - Move the slider in increments, using either the mouse or the direction keys, or click the UP button to increase the brightness.
 - Move the slider in decrements, using either the mouse or the direction keys, or click the DOWN button to decrease the brightness.

Watchdog



When the application is executed, it will display watchdog information in the WATCHDOG INFORMATION group box. It displays max timeout, min timeout, and timeout steps in milliseconds. For example, a 1~255 seconds watchdog will have 255000 max timeout, 1000 min timeout, and 1000 timeout steps. You can test the functionality of the watchdog as follows:

- Set the timeout value 3000 (3 sec.) in the SET TIMEOUT field and set the delay value 2000 (2 sec.) in the SET DELAY field, then click the START button. The Timeout Countdown field will countdown the watchdog timer and display 5000 (5 sec.).
- Before the timer counts down to zero, you can reset the timer by clicking the REFRESH button. After you click this button, the Timeout Countdown field will display the value of the SET TIMEOUT field.
- If you want to stop the watchdog timer, you just click the STOP button.

Hardware Monitor

WATCHDOG	SMBus	IIC	MultiBytes IIC
VGA CONTROL		HWM	ABOUT
Voltage		Temperature	
VDCORE	1.344	CPU	46.5
V25	0	SYS	0
V33	3.312	Fan Speed	
V50	4.99968	CPU	0
V120	11.856	SYS	0
VSB	4.92121	Other	0
VBAT	3.248	<input type="button" value="Stop"/>	
VN50	2.84571		
VN120	1.78971		
VTT	2.528		

CL

When the Monitor application is executed by clicking the button, hardware monitoring data values will be displayed. If certain data values are not supported by the platform, the correspondent data field will be grayed-out with a value of 0.

For More detail PCM-3362 software API user manual, please contact your dealer or Advantech AE. We also include these manuals in this CD.

Chapter 5

Chipset Software Installation Utility

5.1 Before You Begin

To facilitate the installation of the enhanced display drivers and utility software, read the instructions in this chapter carefully. The drivers for the PCM-3362 are located on the software installation CD. The driver in the folder of the driver CD will guide and link you to the utilities and drivers under a Windows system. Updates are provided via Service Packs from Microsoft*.

Note! *The files on the software installation CD are compressed. Do not attempt to install the drivers by copying the files manually. You must use the supplied SETUP program to install the drivers.*



Before you begin, it is important to note that most display drivers need to have the relevant software application already installed in the system prior to installing the enhanced display drivers. In addition, many of the installation procedures assume that you are familiar with both the relevant software applications and operating system commands. Review the relevant operating system commands and the pertinent sections of your application software's user manual before performing the installation.

5.2 Introduction

The Intel® Chipset Software Installation (CSI) utility installs the Windows INF files that outline to the operating system how the chipset components will be configured. This is needed for the proper functioning of the following features:

- Core PCI PnP services
- Serial ATA interface support
- USB 1.1/2.0 support (USB 2.0 driver needs to be installed separately for Win98)
- Identification of Intel® chipset components in the Device Manager
- Integrates superior video features. These include filtered sealing of 720 pixel DVD content, and MPEG-2 motion compensation for software DVD

5.3 Windows XP/Vista/Win7 Driver Setup

Insert the driver CD into your system's CD-ROM drive. You can see the driver folder items. Navigate to the "PCM-3362\01_chipset" folder, and find folders including Win XP, Vista, and Win 7 and choose which of OS you would like to install, and click "infinst_autol.exe" to complete the installation of the driver.

Note! *Wrong driver installation may cause unexpected system instability.*



Chapter 6

Integrated Graphic Device Setup

6.1 Introduction

To benefit from the Intel® Atom N450 integrated graphics controller, you need to install the graphic driver.

6.2 Windows XP/ Vista /Win7 Driver Setup

Note! *Before installing this driver, make sure the chipset driver has been installed in your system. See Chapter 5 for information on installing the chipset driver.*



1. Insert the driver CD into your system's CD-ROM drive. You can see the driver folder items. Navigate to the "PCM-3362\02_ Graphic" folder, and find folders including Win XP, Vista, and Win 7 and choose which of OS you would like to install.
2. Locate and highlight the "igxp32.INF" (if 32-bit) or "igxp64.INF" (if 64-bit). Click on the "Open" button.
3. Click on the "OK" button. A window listing all of the available display types should open. Select the display adapter that your system contains and then click on the "Next" button.
4. Click on the "Next" button. The operating system will install the driver. Click on the "Finish" button when done.
5. Click on the "Close" button and then click on the "Yes" button to reboot. The driver should now be loaded.

Chapter 7

LAN Configuration

7.1 Introduction

The PCM-3362 has Gigabit Ethernet LAN via dedicated PCI Express x 1 lanes (Intel 82567V), that offer bandwidth of up to 500 MB/sec, eliminating the bottleneck of network data flow and incorporating Gigabit Ethernet to operate at 1000Mbps.

7.2 Installation

Note! *Before installing this driver, make sure the chipset driver has been installed in your system. See Chapter 5 for information on installing the chipset driver.*



The PCM-3362s Intel 82567V Gigabit controller supports all major network operating systems. However, the installation procedure varies with different operating systems. Please find and use the section that provides the driver setup procedure for the operating system you are using.

7.3 Windows XP/ Vista /Win7 Driver Setup

Insert the driver CD into your system's CD-ROM drive. You can see the driver folder items. Navigate to the "PCM-3362\03 LAN" folder and click autorun program to complete the installation of the driver.

Appendix **A**

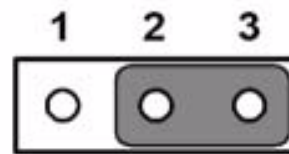
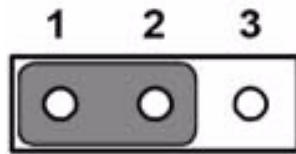
Pin Assignments

This appendix contains information of a detailed or specialized nature.

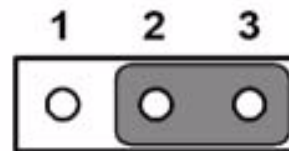
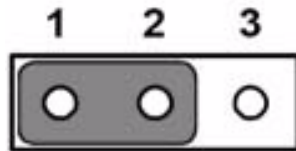
Sections include:

- Jumper and Connector Tables

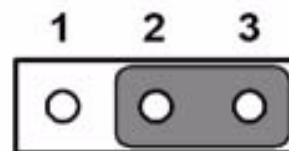
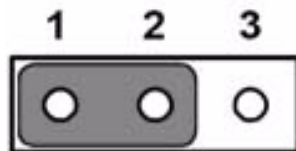
A.1 Jumper and Connector Tables



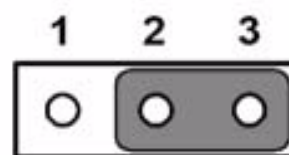
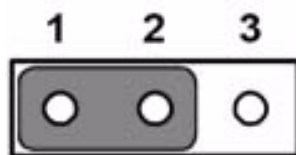
JP1	CLEAR CMOS
Part Number	1653003101
Footprint	JH3X1V-2M
Description	PIN HEADER 3*1P 180D(M) 2.0mm DIP SQUARE W/O Pb
Setting	Function
(1-2)	NORMAL (Default)
(2-3)	CLEAR CMOS



JP2	LVDS PANEL POWER Select
Part Number	1653003101
Footprint	JH3X1V-2M
Description	PIN HEADER 3*1P 180D(M) 2.0mm DIP SQUARE W/O Pb
Setting	Function
(1-2)	5V for +VLVDS_PANEL POWER Select
(2-3)	3.3V for +VLVDS_PANEL POWER Select (Default)

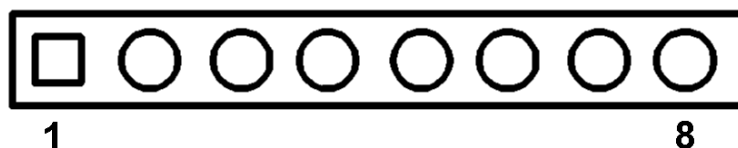


JP3	COM3 RS422/RS485 Select
Part Number	1653003101
Footprint	JH3X1V-2M
Description	PIN HEADER 3*1P 180D(M) 2.0mm DIP SQUARE W/O Pb
Setting	Function
(1-2)	RS485 (default)
(2-3)	RS422



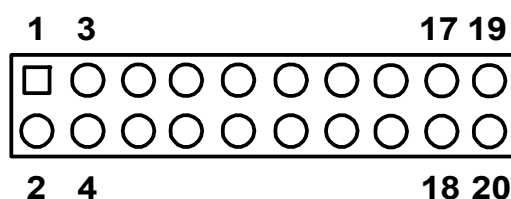
JP4	PCI I/O Voltage Select
------------	-------------------------------

Part Number	1653002101
Footprint	JH2X1V-2M
Description	PIN HEADER 2*1P 180D(M)SQUARE 2.0mm DIP W/O Pb
Setting	Function
(1-2)	5V for PCI I/O Voltage Select (default)
(2-3)	3.3V for PCI I/O Voltage Select



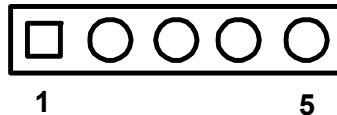
CN1	HD Audio Connector		
Part Number	1653008101		
Footprint	JH8X1V-2M		
Description	PIN HEADER 8*1P 180D(M) 2.0mm DIP 209-1*8GS		
Pin	Pin Name	Signal Type	Signal Level
1	+V5	PWR	+5 V
2	GND		
3	AZ_BITCLK	CLK	
4	AZ_SYNC	I/O	
5	AZ_RST#	I/O	
6	AZ_SDIN0	IN	
7	AZ_SDOOUT	OUT	
8	+V12	PWR	+12 V

CN4	DDR2 SO-DIMM		
Part Number	1651000087		
Footprint	DDR-SODIMM-STD65		
Description	SKT DIMM 200P DDR2 H=6.5mm STD SMD WO/Pb		



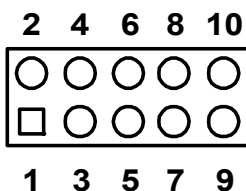
CN6	LVDS Connector		
Part Number	1653910261		
Footprint	SPH10X2		
Description	*CONN. SMD 10*2P 180D(M)DF13-20DP-1.25V(91) HRS		
Pin	Pin Name	Signal Type	Signal Level
1	GND		
2	GND		
3	LVDS0_z_D0+	OUT	LVDS
4	N/C		
5	LVDS0_z_D0-	OUT	LVDS
6	N/C		
7	LVDS0_z_D1+	OUT	LVDS

8	N/C		
9	LVDS0_z_D1-	OUT	LVDS
10	N/C		
11	LVDS0_z_D2+	OUT	LVDS
12	N/C		
13	LVDS0_z_D2-	OUT	LVDS
14	N/C		
15	LVDS0_z_CLK+	OUT	LVDS
16	N/C		
17	LVDS0_z_CLK-	OUT	LVDS
18	N/C		
19	+V_LCD	PWR	+5 V/+3.3 V
20	+V_LCD	PWR	+5 V/+3.3 V

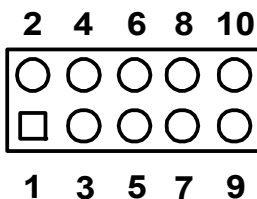


CN7	Internal LCD Backlight		
Part Number	1655305020		
Footprint	WHL5V-2M		
Description	WAFER BOX 2.0mm 5P 180D(M) W/LOCK		
Pin	Pin Name	Signal Type	Signal Level
1	+V12_INVERTER	PWR	+12V
2	GND	GND	
3	LVDS0_ENABKL	OUT	+3.3V
4	LVDS0_VBR	OUT	+3.3V
5	+V5_INVERTER	PWR	+5V

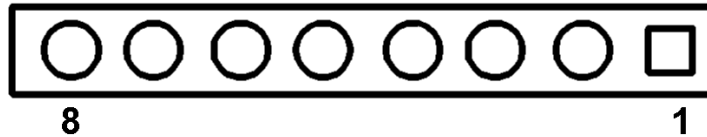
CN8	VGA Connector		
Part Number	1655912120		
Footprint	WB12P-S1.25mm		
Description	Wafer Box 1.25mm 12P 90D(M) SMD 85204-12001		
Pin	Pin Name	Signal Type	Signal Level
1	GND	GND	
2	VGA_z_R	OUT	+5 V
3	VGA_z_G	OUT	+5 V
4	VGA_z_B	OUT	+5 V
5	GND	GND	
6	+V5_CRT	PWR	+5 V
7	VGA_z_DDAT	OUT	+5 V
8	VGA_z_DCLK	OUT	+5 V
9	GND	GND	
10	VGA_z_HS	OUT	+5 V
11	VGA_z_VS	OUT	+5 V
12	GND	GND	



CN9	USB0/1		
Part Number	1653003718		
Footprint	PH5x2P-SR2.00		
Description	PIN HEADER 5*2P 2.00mm 90D(M) NO.10 SMD		
Pin	Pin Name	Signal Type	Signal Level
1	+V5_USB0	PWR	+5 V
2	+V5_USB0	PWR	+5 V
3	USB0_z_P-	I/O	
4	USB1_z_P-	I/O	
5	USB0_z_P+	I/O	
6	USB1_z_P+	I/O	
7	GND		
8	GND		
9	GND		

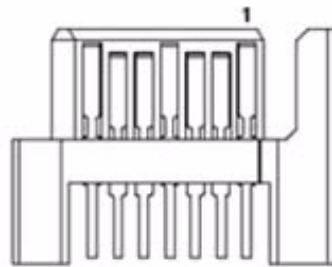


CN10	USB2/3		
Part Number	1653003718		
Footprint	PH5x2P-SR2.00		
Description	PIN HEADER 5*2P 2.00mm 90D(M) NO.10 SMD		
Pin	Pin Name	Signal Type	Signal Level
1	+V5_USB0	PWR	+5 V
2	+V5_USB0	PWR	+5 V
3	USB2_z_P-	I/O	
4	USB3_z_P-	I/O	
5	USB2_z_P+	I/O	
6	USB3_z_P+	I/O	
7	GND		
8	GND		
9	GND		

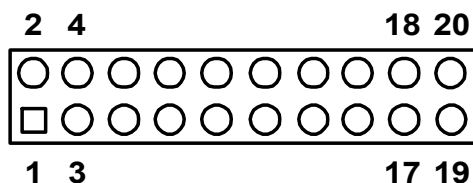


CN12	Front panel Connector		
Part Number	1653008101		
Footprint	JH8X1V-2M		
Description	PIN HEADER 8*1P 180D(M) 2.0mm DIP 209-1*8GS		
Pin	Pin Name	Signal Type	Signal Level
1	PSIN#	IN	+3.3 V
2	GND		
3	RESET	IN	
4	GND		
5	PWR_LED	OUT	
6	GND		
7	+V3.3	PWR	+3.3 V
8	HD_LED	OUT	

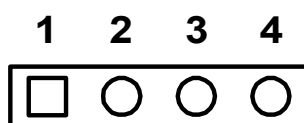
CN13	Buzzer Connector		
Part Number	1653002101		
Footprint	HD_2x1P_79_D		
Description	PIN HEADER 2*1P 180D(M)SQUARE 2.0mm DIP W/O Pb		
Pin	Pin Name	Signal Type	Signal Level
1	+V3.3	PWR	+3.3 V
2	SB_z_SPKR	OUT	



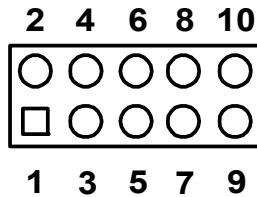
CN15	SATA1 connector		
Part Number	1654000128		
Footprint	SATA-LD11071S02		
Description	Serial ATA 7P 90D(M) SMD 15u Reverse		
Pin	Pin Name	Signal Type	Signal Level
1	GND	GND	
2	SATA0_TX+	I/O	Analog
3	SATA0_TX-	I/O	Analog
4	GND	GND	
5	SATA0_RX-	I/O	Analog
6	SATA0_RX+	I/O	Analog
7	GND	GND	



CN16	COM1~COM2 Connector		
Part Number	1653003720		
Footprint	HD_10x2P_79_RA		
Description	PIN HEADER 10*2P 2.00mm 90D(M) SMD 21N22050-20J1		
Pin	Pin Name	Signal Type	Signal Level
1	COM0_DCD#	IN	+5 V
2	COM0_DSR#	IN	+5 V
3	COM0_RXD	IN	+5 V
4	COM0_RTS#	I/O	+5 V
5	COM0_TXD	OUT	+5 V
6	COM0_CTS#	IN	+5 V
7	COM0_DTR#	I/O	+5 V
8	COM0_RI#	IN	+5 V
9	GND		
10	GND		
11	COM1_DCD#	IN	+5 V
12	COM1_DSR#	IN	+5 V
13	COM1_RXD	IN	+5 V
14	COM1_RTS#	I/O	+5 V
15	COM1_TXD	OUT	+5 V
16	COM1_CTS#	IN	+5 V
17	COM1_DTR#	I/O	+5 V
18	COM1_RI#	IN	+5 V
19	GND		
20	GND		

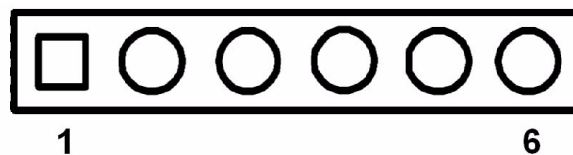


CN17	RS422/485 Connector		
Part Number	1655304120		
Footprint	WHL4H-2M_A		
Description	WAFER BOX 2.0mm 4P 90D(M) DIP W/LOCK		
Pin	Pin Name	Signal Type	Signal Level
1	RS422_RXD-	I/O	+5 V
2	RS422_RXD+	I/O	+5 V
3	RS485_422_TXD+	I/O	+5 V
4	RS485_422_TXD-	I/O	+5 V



CN18	LAN Connector		
Part Number	1653003719		
Footprint	HD_5x2P_79_RA_21N22050		
Description	PIN HEADER 5*2P 2.00mm 90D(M) SMD 21N22050-10J10		
Pin	Pin Name	Signal Type	Signal Level
A1	GNDT	GND	
A2	GNDT	GND	
A3	LAN1_M3+	I/O	Analog
A4	LAN1_M3-	I/O	Analog
A5	LAN1_M2+	I/O	Analog
A6	LAN1_M2+	I/O	Analog
A7	LAN1_M1+	I/O	Analog
A8	LAN1_M1+	I/O	Analog
A9	LAN1_M0+	I/O	Analog
A10	LAN1_M0+	I/O	Analog

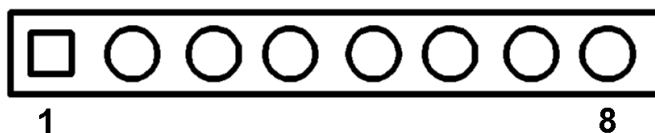
CN19	LAN LED Connector		
Part Number	1653004101		
Footprint	HD_4x1P_79_D		
Description	PIN HEADER 4*1P 180D(M) 2.0mm DIP WO/Pb		
Pin	Pin Name	Signal Type	Signal Level
1	+V3.3_LAN1	PWR	+3.3V
2	LAN1_ACT#	OUT	
3	LAN1_1000#	OUT	
4	LAN1_100#	OUT	



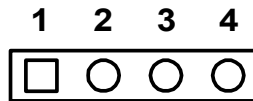
CN20	PS2 Keyboard/Mouse Connector		
Part Number	1655306020		
Footprint	WHL6V-2M		
Description	WAFER BOX 2.0mm 6P 180D(M) W/LOCK		
Pin	Pin Name	Signal Type	Signal Level
1	KB_z_CLK#	I/O	+5 V
2	KB_z_DAT#	I/O	+5 V
3	MS_z_CLK#	I/O	+5 V
4	GND		
5	+V5_KB	PWR	+5 V
6	MS_z_DAT#	I/O	+5 V

CN21	GPIO Connector		
Part Number	1653010102		
Footprint	JH10X1V-2M		
Description	PIN HEADER 10*1P 180D(M) DIP P=2.0mm		
Pin	Pin Name	Signal Type	Signal Level
1	+V5_GPIO	PWR	+5 V
2	DIO_IO0	I/O	+5 V
3	DIO_IO1	I/O	+5 V
4	DIO_IO2	I/O	+5 V
5	DIO_IO3	I/O	+5 V
6	DIO_IO4	I/O	+5 V
7	DIO_IO5	I/O	+5 V
8	DIO_IO6	I/O	+5 V
9	DIO_IO7	I/O	+5 V
10	GND		

CN23	ATX Power In Connector		
Part Number	1655303020		
Footprint	WHL3V-2M		
Description	WAFER BOX 2.0mm 3P 180D w/LOCK		
Pin	Pin Name	Signal Type	Signal Level
1	+V5_SB	PWR	+5 V
2	GND		
3	PWR_PSON#	IN	



CN24	Power In Connector		
Part Number	1655308120		
Footprint	WHL8H-2M		
Description	Wafer Box 2.0mm 8P 90D Male W/Lock		
Pin	Pin Name	Signal Type	Signal Level
1	+V5_ATX	PWR	+5 V
2	+V5_ATX	PWR	+5 V
3	+V5_ATX	PWR	+5 V
4	GND		
5	GND		
6	GND		
7	GND		
8	+V12	PWR	+12 V



CN25	I2C BUS connector		
Part Number	1653004101		
Footprint	HD_4x1P_79_D		
Description	PIN HEADER 4*1P 180D(M) 2.0mm DIP WO/Pb		
Pin	Pin Name	Signal Type	Signal Level
1	GND		
2	I2 C_DAT	I/O	
3	I2 C_CLK	I/O	
4	+V5_I2C	PWR	+5V

CN26	-12V & -5V power connector		
Part Number	1653003101		
Footprint	HD_3x1P_79_D		
Description	PIN HEADER 3*1P 180D(M) 2.0mm DIP SQUARE W/O Pb		
Pin	Pin Name	Signal Type	Signal Level
1	-V5	PWR	-5 V
2	GND		
3	-V12	PWR	-12 V

Appendix **B**

System Assignments

This appendix contains information of a detailed nature.

Sections include:

- System I/O ports
- 1st MB memory map
- DMA channel assignments
- Interrupt assignments

B.1 System I/O Ports

Table B.1: System I/O ports

Addr. range (Hex)	Device
000-01F	DMA controller
020-021	Interrupt controller 1, master
040-05F	8254 timer
060-06F	8042 (keyboard controller)
070-071	Real-time clock, non-maskable interrupt (NMI) mask
87-8A	DMA page register
0A0-0A1	Interrupt controller 2
0C0-0DF	DMA controller
1F0-1F8	Fixed disk
278-27F	Reserved (Parallel port 2,LTP3)
2E8-2EF	Reserved (Series port 4)
2F8-2FF	Serial port 2
378-37F	Parallel printer port 1 (LPT 2)
3B0-3BF	Monochrome display and printer adapter (LPT1)
3D0-3DF	Color/graphics monitor adapter
3E8-3EF	Series port 3
3F0-3F7	Diskette controller
3F8-3FF	Serial port 1

* PNP audio I/O map range from 220 ~ 250H (16 bytes) MPU-401 select from 300 ~ 330H (2 bytes)

B.2 1st MB Memory Map

Table B.2: 1st MB memory map

Addr. range (Hex)	Device
F0000h - FFFFFh	System ROM
*CC000h - EFFFFh	Unused (reserved for Ethernet ROM)
C0000h - CBFFFh	Expansion ROM (for VGA BIOS)
B8000h - BFFFFh	CGA/EGA/VGA text
B0000h - B7FFFh	Unused
A0000h - AFFFFh	EGA/VGA graphics
00000h - 9FFFFh	Base memory

* If Ethernet boot ROM is disabled (Ethernet ROM occupies about 16 KB)

* E0000 - EFFFF is reserved for BIOS POST

B.3 DMA channel assignments

Table B.3: DMA channel assignments

Channel	Function
0	Available

Table B.3: DMA channel assignments

1	Available (audio)
2	Floppy disk (8-bit transfer)
3	Available (parallel port)
4	Cascade for DMA controller 1
5	Available
6	Available
7	Available

* Audio DMA select 1, 3, or 5

** Parallel port DMA select 1 (LPT2) or 3 (LPT1)

B.4 Interrupt assignments

Table B.4: Interrupt assignments

Interrupt#	Interrupt source
IRQ 0	Interval timer
IRQ 1	Keyboard
IRQ 2	Interrupt from controller 2 (cascade)
IRQ 3	COM2
IRQ 4	COM1
IRQ 5	Reserved (COM4)
IRQ 6	FDD
IRQ 7	LPT1
IRQ 8	RTC
IRQ 9	Reserved (audio)
IRQ 10	Reserved (COM3)
IRQ 11	Reserved
IRQ 12	PS/2 mouse
IRQ 13	INT from co-processor
IRQ 14	Primary IDE
IRQ 15	Reserved

Appendix **C**

Mechanical Drawings

C.1 Board Mechanical Drawings

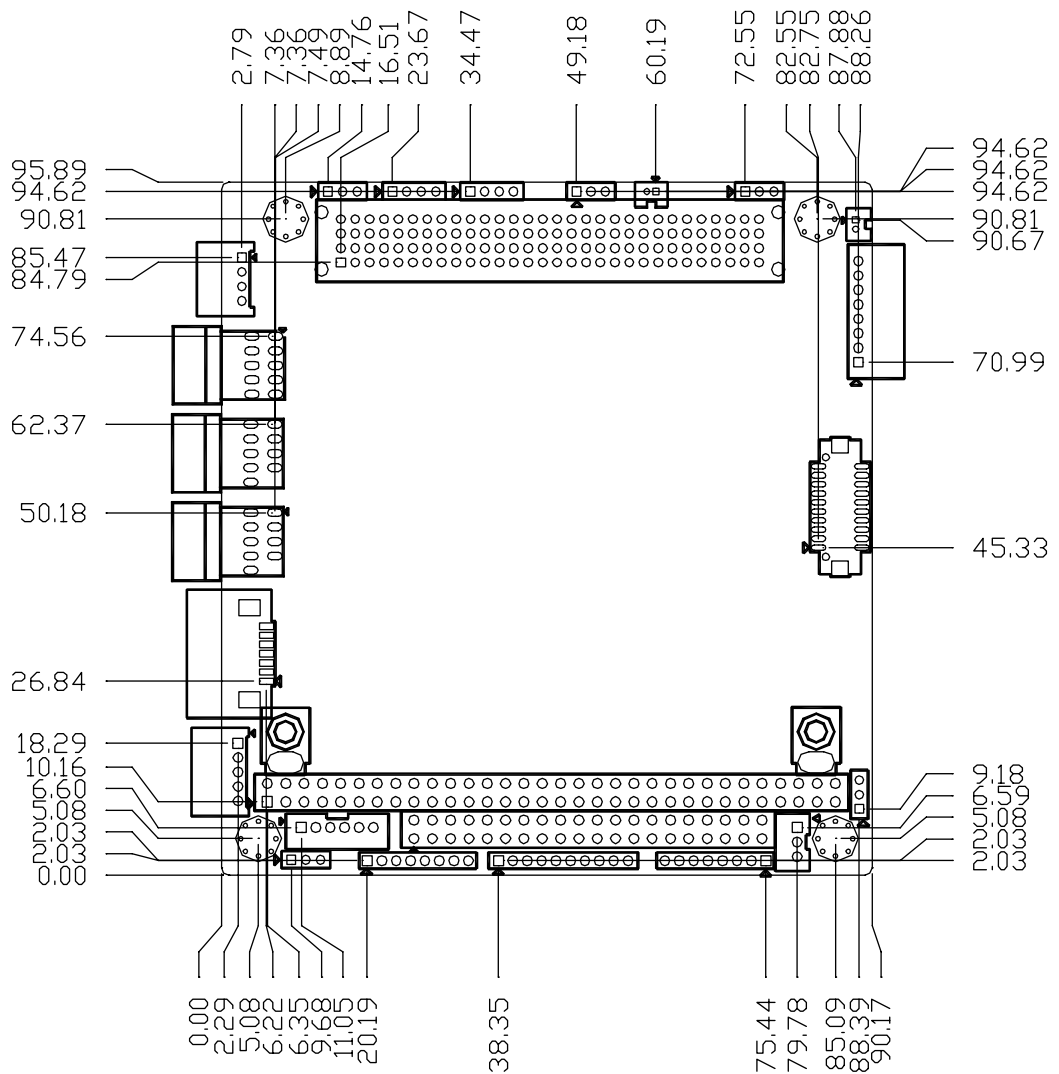


Figure C.1 PCM-3362 Mechanical Drawing (Component Side)

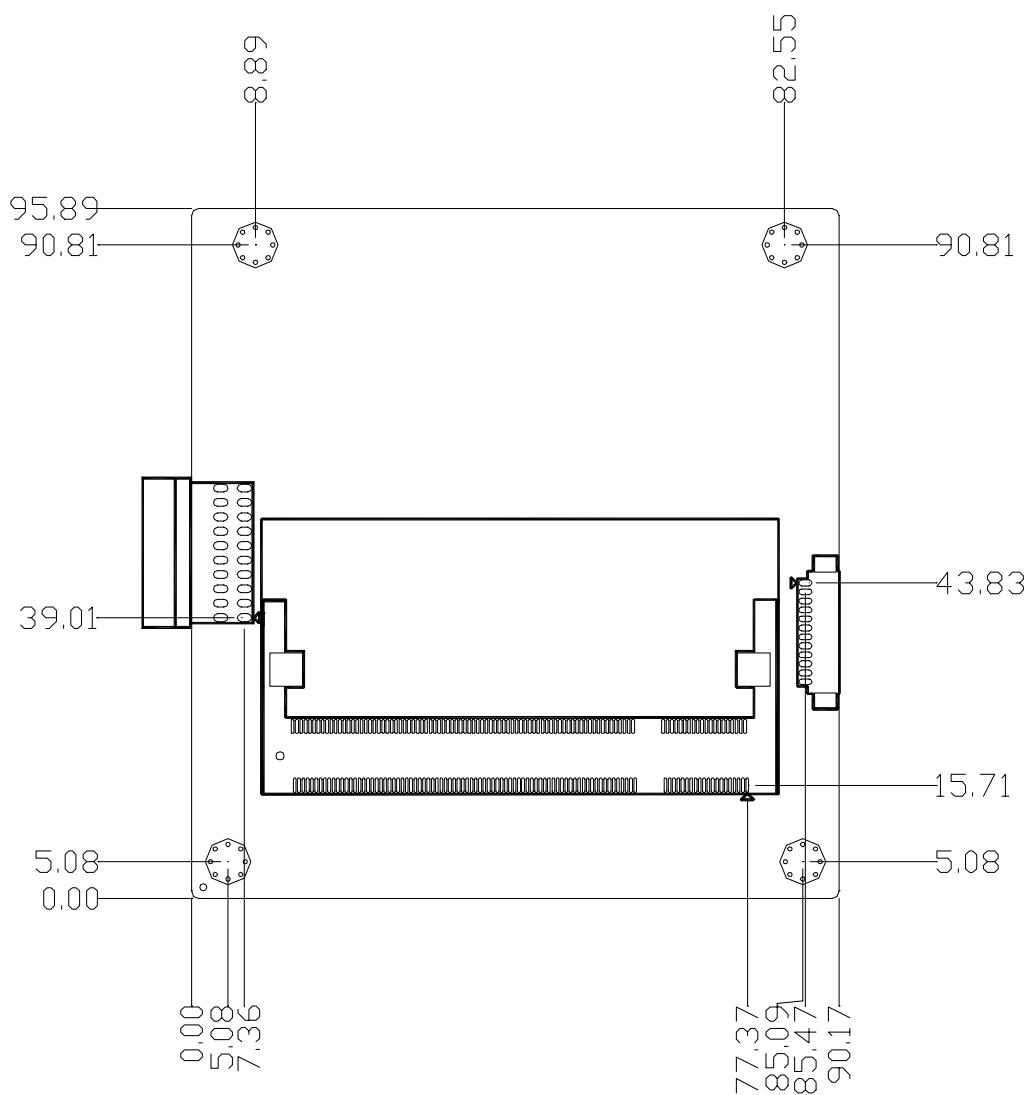


Figure C.2 PCM-3362 Mechanical Drawing (Solder Side)

C.2 Heatsink Mechanical Drawings

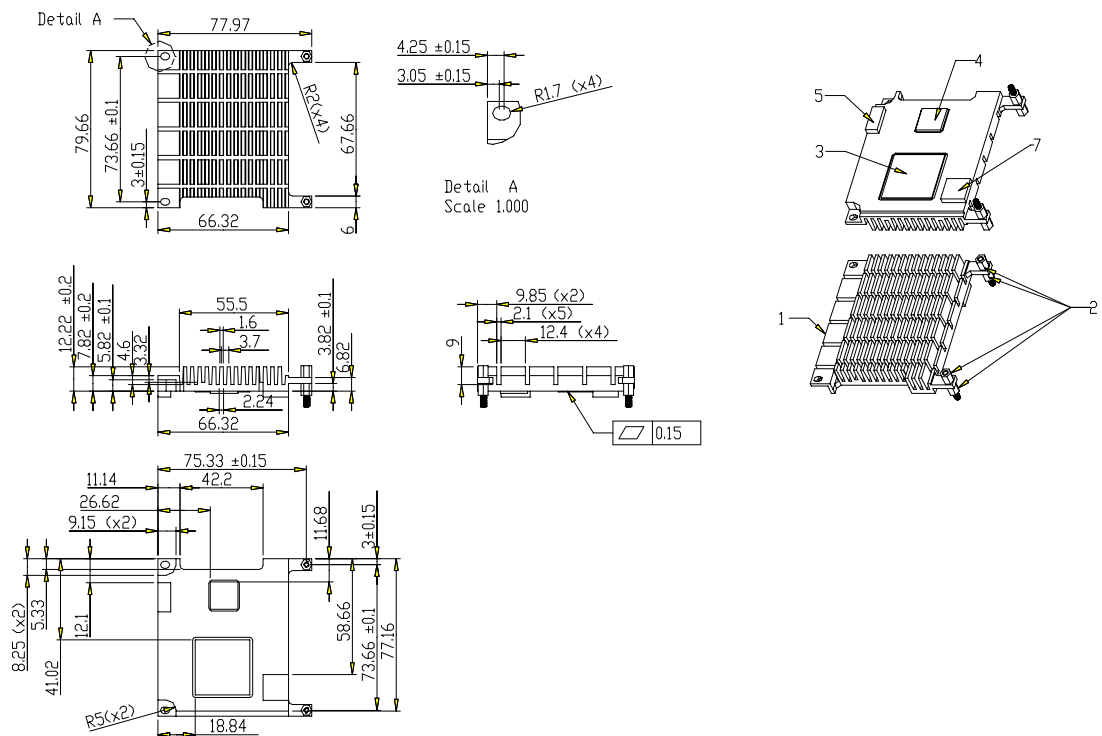


Figure C.3 PCM-3362N Heatsink Mechanical Drawing

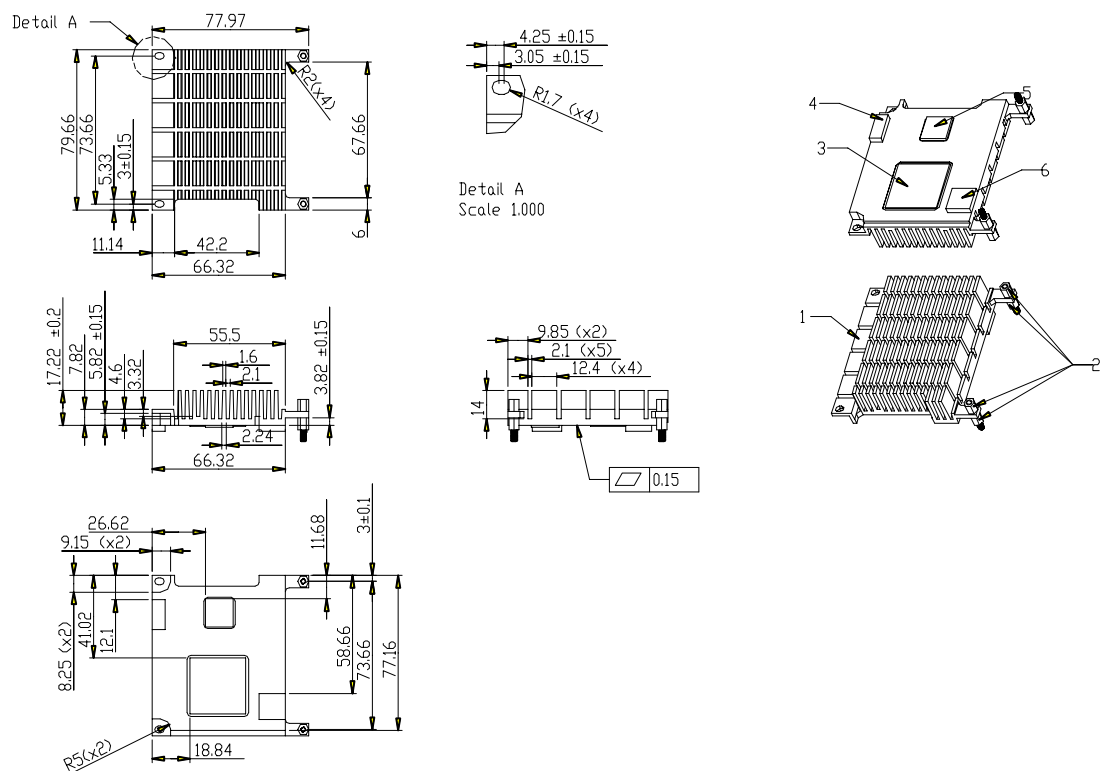


Figure C.4 PCM-3362Z/Z2 Heatsink Mechanical Drawing for wide temperature version

C.3 Optional Heat spreader Mechanical Drawings

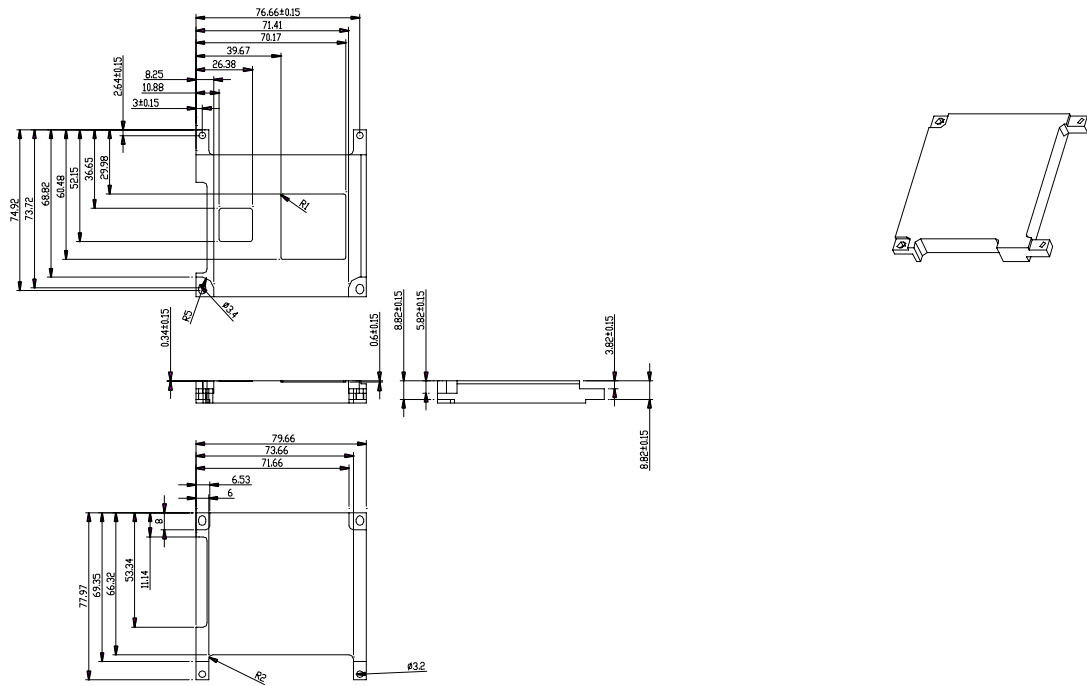


Figure C.5 PCM-3362 optional Heatspreader Mechanical Drawing

Appendix **D**

Watchdog Timer and
GPIO sample code

D.1 Watchdog Timer sample code

```
;The SCH3114 Runtime base I/O address is A00h
;Setting WatchDog time value location at offset 66h
;If set value "0", it is mean disable WatchDog function. Superio_GPIO_Port = A00h
mov dx,Superio_GPIO_Port + 66h
mov al,00h out dx,al
.model small
.486p
.stack 256
.data
SCH3114_IO EQU A00h
.code
org 100h
.STARTup
;=====
;90H
;enable WDT function bit [0]=01h
;=====
mov dx,SCH3114_IO + 90h mov al,01h
out dx,al
;=====
;65H
;bit [1:0]=Reserved
;bit [6:2]Reserve=00000
;bit [7] WDT time-out Value Units Select
;Minutes=0 (default) Seconds=1
;=====
mov dx,SCH3114_IO + 65h ;
mov al,080h out dx,al
;=====
;66H
;WDT timer time-out value
;bit[7:0]=0~255
;=====
mov dx,SCH3114_IO + 66h mov al,01h
out dx,al
;=====
;bit[0] status bit R/W
;WD timeout occurred =1
;WD timer counting = 0
;=====
mov dx,SCH3114_IO + 68h
mov al,01h
out dx,al
.exit
```

END

D.2 GPIO sample code

```

;=====
;  Get Number of GPIO group
;  one group mean 8 gpio pins (one GPIO Chip)
; Input:
;  ax=5E87h
;  bh=00h
; output:
;  ax=5E78 ;function success, other value means function fail
;  cl= n group of gpio

        mov ax,5E87h
        mov bh,00h
        INT15

;      You will get cl=01 in 8 bit GPIO product, cl = 02 in 16 bit GPIO product
;=====
;=====
;  Get GPIO Config
; Input:
;  ax=5E87h
;  bh=01h
;  cl= n ; n means which group of GPIO you want to get
; output:
;  ax=5E78 ;function success, other value means function fail
;  bl= the n group of gpio config
;  bit 0 = gpio 0 , 0 => output pin; 1 => input pin
;  bit 1 = gpio 1 , 0 => output pin; 1 => input pin
;  ....
;  bit 7 = gpio 7 , 0 => output pin; 1 => input pin

        mov ax,5E87h
        mov bh,01h
        mov cl,01h
        INT15

;      You will get GPIO default setting from bl
;=====
;=====
;  Set GPIO Config
; Input:
;  ax=5E87h
;  bh=02h

```



```

; cl= n ; n means which group of GPIO you want to set
; bl= the n group of gpio config
; bit 0 = gpio 0 , 0 => output pin; 1 => input pin
; bit 1 = gpio 1 , 0 => output pin; 1 => input pin
; .....
; bit 7 = gpio 7 , 0 => output pin; 1 => input pin
; output:
; ax=5E78 ;function success, other value means function fail

```

```

    mov ax,5E87h
    mov bx,02AAh
    mov cl,01
    INT15

```

```

; Set GPIO 0,2,4,6 as output, GPI 1,3,5,7 as input
;=====
;=====

```

```

; Get GPIO status
; Input:
; ax=5E87h
; bh=03h
; cl= n ; n means which group of GPIO you want to get
; output:
; ax=5E78 ;function success, other value means function fail
; bl= the n group of gpio status
; bit 0 = gpio 0 , 0 => Low; 1 => High
; bit 1 = gpio 1 , 0 => Low; 1 => High
; .....
; bit 7 = gpio 7 , 0 => Low; 1 => High

```

```

    mov ax,5E87h
    mov bh,03h
    mov cl,01h
    INT15

```

```

; You will get GPIO value from bl
;=====
;=====

```

```

; Set GPIO status
; Input:
; ax=5E87h
; bh=04h
; cl= n ; n means which group of GPIO you want to set
; bl= the n group of gpio status
; bit 0 = gpio 0 , 0 => Low; 1 => High

```

```
; bit 1 = gpio 1 , 0 => Low; 1 => High
;
; bit 7 = gpio 7 , 0 => Low; 1 => High
; output:
; ax=5E78 ;function success, other value means function fail

    mov ax,5E87h
    mov bx,0400h
    mov cl,01
    INT15

; Set GPIO 0,2,4,6 Output Low
;=====
```

Trusted ePlatform Services

ADVANTECH

www.advantech.com

Please verify specifications before quoting. This guide is intended for reference purposes only.

All product specifications are subject to change without notice.

No part of this publication may be reproduced in any form or by any means, electronic, photocopying, recording or otherwise, without prior written permission of the publisher.

All brand and product names are trademarks or registered trademarks of their respective companies.

© Advantech Co., Ltd. 2009

Free Manuals Download Website

<http://myh66.com>

<http://usermanuals.us>

<http://www.somanuals.com>

<http://www.4manuals.cc>

<http://www.manual-lib.com>

<http://www.404manual.com>

<http://www.luxmanual.com>

<http://aubethermostatmanual.com>

Golf course search by state

<http://golfingnear.com>

Email search by domain

<http://emailbydomain.com>

Auto manuals search

<http://auto.somanuals.com>

TV manuals search

<http://tv.somanuals.com>